

Gold Bond® BRAND

High Strength LITE™

Family of Products



Gold Bond®
BRAND
Gypsum Board

National
Gypsum®

Gold Bond® BRAND High Strength LITE™ Gypsum Board

Description

Gold Bond® BRAND High Strength LITE™ is a specialty gypsum board that is formulated to be 25% lighter than original 1/2" High Strength Gypsum Board. The result is a superior board that is lighter in weight, sag resistant and easier to handle.

High Strength LITE is encased in heavy, natural-finish, 100% recycled paper on the face and back sides. The face paper is folded around the long edges to reinforce and protect the core, and the ends are square-cut and finished smooth. For speed of installation, GridMarX® guide marks are printed on the paper surface.

Long edges of the panels are tapered or square. Tapered edges allow joints to be reinforced, with ProForm® BRAND Joint Tape and concealed with ProForm® BRAND Ready Mix, Easy Finish® Ready Mix or ProForm® BRAND Quick Set Setting Joint Compounds.

Basic Uses

High Strength LITE Gypsum Board can be used for walls and ceilings in non-fire rated single layer construction where framing members are spaced up to 24" o.c. Because it can be installed on both walls and ceilings, it eliminates the need for two different types of gypsum board on the job.

Features/Benefits

- 25% lighter than original 1/2" High Strength Gypsum Board.
- Can be used on walls and ceilings.
- Lighter weight results in easier handling.
- Excellent working properties including improved score and snap, reduced dust and improved strength to weight ratio.
- Excellent sag resistance. Test results show overall sag on tested assembly to be equivalent to 5/8" Type X gypsum board.
- GridMarX® guide marks are printed on the paper surface allowing the installer to quickly identify fastener lines for stud and joist framing. GridMarX also assist with quick identification of nail/screw patterns.
- High Strength LITE Gypsum Board is GREENGUARD Children & Schools™ Certified for indoor air quality.
- GREENGUARD Certified® as a low-emitting material. Meets CHPS and CA Section 01350.



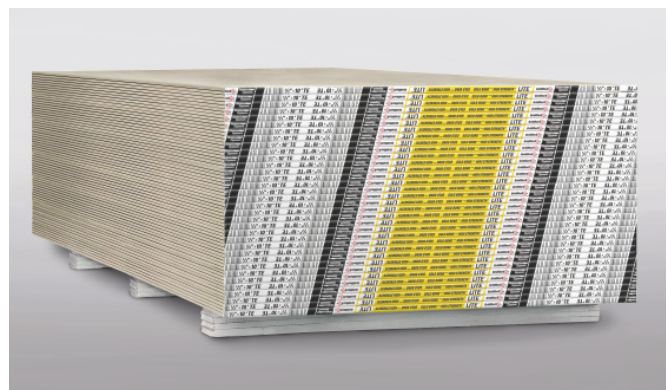
Technical Data

PHYSICAL PROPERTIES

Thickness, nominal	1/2" Regular (12.7 mm)	
Width, nominal	4' (1219 mm)	54" (1372 mm)
Length, standard	8' (2438 mm)	12' (3657 mm)
	10' (3048 mm)	14' (4267 mm)
	12' (3657 mm)	
Weight, lbs./sq. ft., nominal	1/2" Regular 1.3 – 1.4	
Edges	Tapered	
Surface Burning Characteristics (per ASTM E 84)	Flame Spread: 15 Smoke Developed: 0	

APPLICABLE STANDARDS AND REFERENCES

ASTM C 1396
 ASTM C 840
 Gypsum Association GA-216
 Gypsum Association GA-214
 National Gypsum Company, *Gypsum Construction Guide*



Gold Bond® BRAND High Strength Fire-Shield® LITE™

Description

Gold Bond® BRAND High Strength Fire-Shield® LITE™ Gypsum Board panels consist of a fire resistant Type X gypsum core specially formulated to be 15% lighter than standard Type X gypsum board.

High Strength Fire-Shield LITE is encased in heavy natural-finish, 100% recycled paper on the face and back sides. The face paper is folded around the long edges to reinforce and protect the core, and the ends are square-cut and finished smooth. For speed of installation, GridMarX® guide marks are printed on the paper surface.

Long edges of the panels are tapered or square. Tapered edges allow joints to be reinforced with ProForm® BRAND Joint Tape and concealed with ProForm® BRAND Ready Mix, Easy Finish® Ready Mix or ProForm® BRAND Quick Set Setting Joint Compounds.

High Strength Fire-Shield LITE Gypsum Board features a Type X core to provide additional fire resistance ratings when used in specific UL designs.

Basic Uses

High Strength Fire-Shield LITE can be used for single or multi-layer drywall construction for fire-rated assemblies.

Features/Benefits

- 15% lighter than standard 5/8" Type X gypsum board.
- Lighter weight results in easier handling.
- Features a fire-resistant Type X core and is UL Classified and approved for inclusion on specific UL fire-rated designs.
- Complies with ASTM C 1396 for 5/8" Type X gypsum board.
- Excellent working properties, including score and snap, reduced dust and improved strength-to-weight ratio.
- GridMarX® guide marks are printed on the paper surface allowing the installer to quickly identify fastener lines for stud and joist framing. GridMarX also assist with quick identification of nail/screw patterns.
- High Strength Fire-Shield LITE Gypsum Board is GREENGUARD Children & Schools™ Certified for indoor air quality.
- GREENGUARD Certified® as a low-emitting material. Meets CHPS and CA Section 01350.

Fire Resistance Ratings

Fire resistance ratings represent the results of tests on assemblies made up of specific materials in a specific configuration. When selecting construction designs to meet certain fire resistance requirements, caution must be used to insure that each component of the assembly is the one specified in the test. Further, precaution should be taken that assembly procedures are in accordance with those of the tested assembly. For copies of specific tests, call 1-800-NATIONAL. For fire safety information, see nationalgypsum.com.

UL Core Designation

5/8" High Strength Fire-Shield LITE: FSL



Technical Data

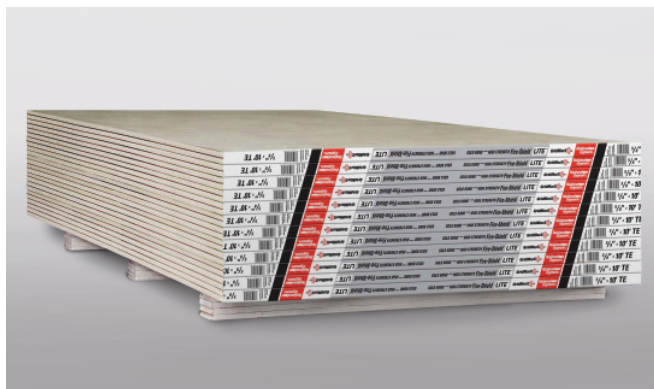
PHYSICAL PROPERTIES

Thickness, nominal	5/8" Type X (15.9 mm)
Width, nominal	4' (1219 mm)
Length, standard	8' through 12' (2438 mm – 3657 mm)
Weight, lbs./sq. ft., nominal	5/8" Type X – 1.9
Edges	Square or Tapered
Surface Burning Characteristics (per ASTM E 84)	Flame Spread: 15 Smoke Developed: 0

*54" wide Gypsum Board available in 5/8" thickness

APPLICABLE STANDARDS AND REFERENCES

ASTM C 1396
ASTM C 840
Gypsum Association GA-214
Gypsum Association GA-216
National Gypsum Company, <i>Gypsum Construction Guide</i>



Gold Bond® BRAND High Strength Fire-Shield® LITE™ 30

Description

Gold Bond® BRAND High Strength Fire-Shield® LITE™ 30 Gypsum Board consists of a fire-resistant Non-Type X gypsum core specially formulated to be 30% lighter than standard Type X gypsum board.

High Strength Fire-Shield LITE 30 is approved for single- or multi-layer drywall construction for 30 minute fire-rated or non-rated assemblies and is encased in heavy, natural finish, 100% recycled paper on the face and back sides. The face paper is folded around the long edges to reinforce and protect the core, and the ends are square cut and finished smooth. For speed of installation, GridMarX® guide marks are printed on the paper surface.

Long edges of the panels are tapered. Tapered edges allow joints to be reinforced with ProForm® BRAND Joint Tape and concealed with ProForm® BRAND Ready Mix, Easy Finish® Ready Mix or ProForm® BRAND Quick Set Setting Joint Compounds.

NOTE: This is a NON-Type X product and is not a substitute for Type X Gypsum Board. The High Strength Fire-Shield LITE 30 product is for single or multi-layer drywall construction for 30 minute fire-rated and non-rated assemblies. The face of the board and the product end tapes are clearly labeled so the installer can identify this product for the appropriate application.

High Strength Fire-Shield LITE 30 Gypsum Board features a NON-Type X core to provide additional fire resistance ratings when used in specific UL designs.

Basic Uses

High Strength Fire-Shield LITE 30 can be used for single or multi-layer drywall construction for 30 minute fire-rated or non-rated assemblies.

Features/Benefits

- 30% lighter than standard 5/8" Type X gypsum board.
- Lighter weight results in easier handling.
- Features a fire-resistant Non-Type X core and is UL Classified and approved for inclusion on specific UL fire-rated designs.
- Complies with ASTM C 1396 for 5/8" gypsum board.
- Excellent working properties, including score and snap, reduced dust and improved strength-to-weight ratio.
- GridMarX® guide marks are printed on the paper surface allowing the installer to quickly identify fastener lines for stud and joist framing. GridMarX also assist with quick identification of nail/screw patterns.
- High Strength Fire-Shield LITE 30 Gypsum Board is GREENGUARD Children & Schools™ Certified for indoor air quality.
- GREENGUARD is certified as a low emitting material – meets CHPS and CA Section 01350.

Technical Data

PHYSICAL PROPERTIES

Thickness, nominal	5/8" (15.9 mm)
Width, nominal	4' (1219 mm)
Length, standard	8' through 12' (2438 mm – 3657 mm)
Weight, lbs./sq. ft., nominal	1.6 – 1.8
Edges	Tapered
Surface Burning Characteristics (per ASTM E 84)	Flame Spread: 15 Smoke Developed: 0

*54" wide gypsum board available in 5/8" thickness

APPLICABLE STANDARDS AND REFERENCES

ASTM C 1396
ASTM C 840
Gypsum Association GA-214
Gypsum Association GA-216
National Gypsum Company, <i>Gypsum Construction Guide</i>



Fire Resistance Ratings

Fire resistance ratings represent the results of tests on assemblies made up of specific materials in a specific configuration. When selecting construction designs to meet certain fire resistance requirements, caution must be used to insure that each component of the assembly is the one specified in the test. Further, precaution should be taken that assembly procedures are in accordance with those of the tested assembly. For copies of specific tests, call 1-800-NATIONAL. For fire safety information, see nationalgypsum.com.

UL Core Designation

5/8" High Strength Fire-Shield LITE 30: FSL30

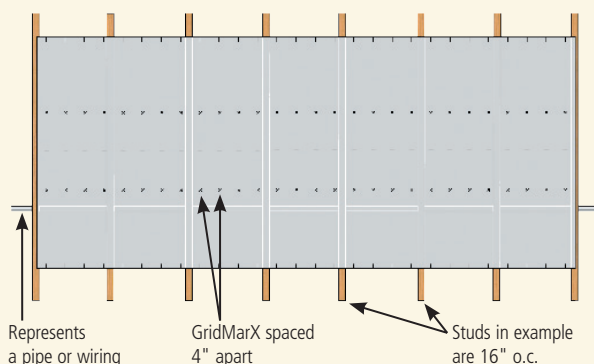




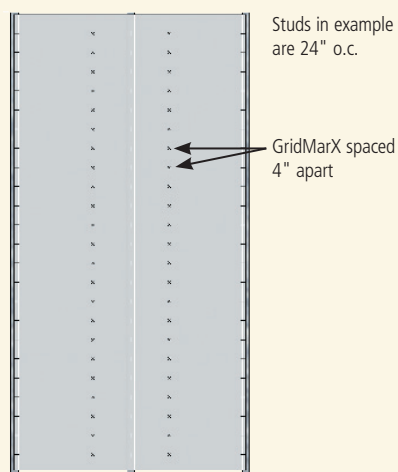
The Lighter Side of Gypsum

National Gypsum continues to bring innovative lightweight gypsum board solutions for both the residential and commercial construction markets. Lighter weight materials are naturally easier to work with, resulting in reduced fatigue, potential increased productivity and faster completion times. In addition to potential productivity savings through lightweight gypsum board, National Gypsum has also incorporated an exclusive feature that further improves efficiency. This feature eases the installer's ability to identify fastener lines, reduces the time spent measuring and creates for more accurate cuts.

Horizontal Wall and Ceiling Application



Vertical Wall Application



Gold Bond® BRAND High Strength LITE™ & GridMarX®

National Gypsum

has combined our

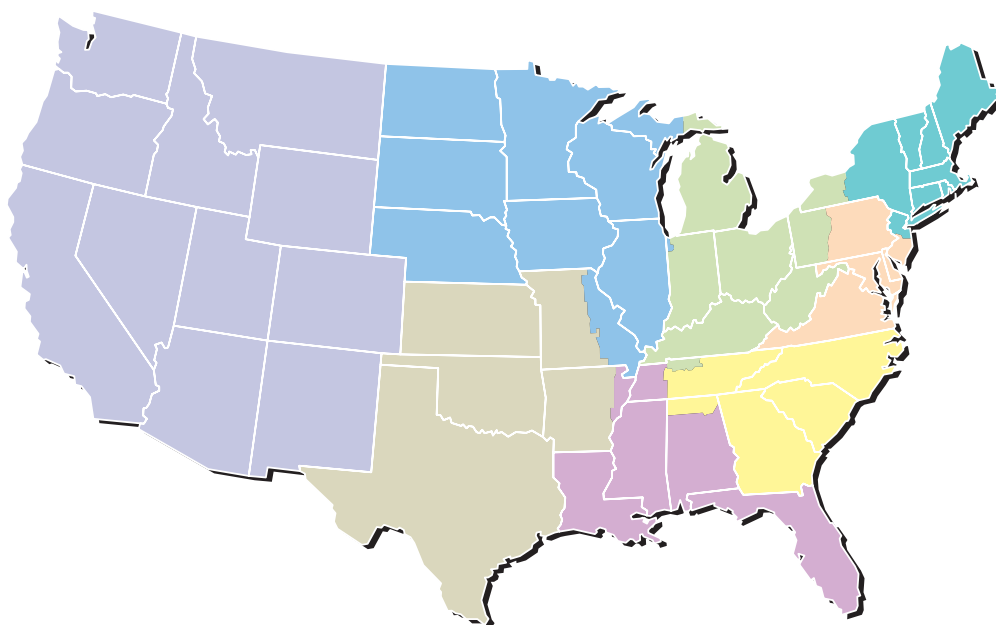


Gold Bond® BRAND High Strength LITE™ family of gypsum board products with our patented GridMarX® technology. Printed on the surface of the face paper during the manufacturing process, GridMarX guide marks allow the contractor to quickly identify fastener lines and make more accurate cuts without measuring. A survey concluded that 80% of participants found that GridMarX increased their productivity levels and helped them to minimize material waste.

The High Strength LITE family of gypsum board products also contributes to healthier indoor environments. High Strength LITE, High Strength Fire-Shield® LITE™ and High Strength Fire-Shield® LITE™ 30 are GREENGUARD Children & Schools™ Certified for indoor air quality and meet CA Section 01350.

Lighter in weight, increased productivity improvement with less waste, and improved indoor air quality makes for a winning combination.

CUSTOMER SERVICE SALES AREAS



Atlantic Area

Phone: (800) 237-9167
Fax: (877) 252-0430

Central Area

Phone: (800) 252-1065
Fax: (866) 232-0440

Gulf Area

Phone: (800) 343-4893
Fax: (866) 482-8940

Midwest Area

Phone: (800) 323-1447
Fax: (866) 692-8590

Northeast Area

Phone: (800) 253-3161
Fax: (866) 632-1480

Southeast Area

Phone: (800) 548-9394
Fax: (866) 732-1990

Southwest Area

Phone: (800) 548-9396
Fax: (866) 792-7520

Western Area

Phone: (800) 824-4227
Fax: (800) 438-6266

National Accounts

Phone: (800) 440-1230
Fax: (866) 622-3590

Manufactured Housing

Phone: (800) 455-3185
Fax: (800) 639-1714

LIMITED WARRANTY AND REMEDIES

Products manufactured and sold by National Gypsum are warranted by National Gypsum to its customers to be free from defects in materials and workmanship at the time of shipment. **THIS EXPRESS WARRANTY IS THE ONLY WARRANTY APPLICABLE TO SUCH PRODUCTS, AND IS IN LIEU OF AND EXCLUDES ALL OTHER EXPRESS ORAL OR WRITTEN WARRANTIES AND ALL IMPLIED WARRANTIES, INCLUDING BUT NOT LIMITED TO THE IMPLIED WARRANTIES OF MERCHANTABILITY AND FITNESS FOR A PARTICULAR PURPOSE.**

National Gypsum will not be liable for any incidental, indirect or consequential losses, damages or expenses. The customer's exclusive remedy for any type of claim or action for defective products will be limited to the replacement of the products (in the form originally shipped) or, at National Gypsum's option, to a payment or credit not greater than the original purchase price of the products.

National Gypsum will not be liable for products claimed to be defective where the defect resulted from causes not within National Gypsum's control, or which arose or occurred after shipment, including but not limited to accidents, misuse, mishandling, improper installation, contamination or adulteration by other materials or goods, or abnormal conditions of temperature, moisture, dirt or corrosive matter.

Any claim that products sold by National Gypsum were defective or otherwise did not conform to the contract of sale is waived unless the customer submits it in writing to National Gypsum within thirty (30) days from the date the customer discovered or should have discovered the defect or nonconformance. No legal action or proceeding complaining of goods sold by National Gypsum may be brought by the customer more than one year after the date the customer discovered or should have discovered the defect or problem of which it complains.



Corporate Headquarters

National Gypsum Company
2001 Rexford Road
Charlotte, NC 28211
Phone: (704) 365-7300
Web: nationalgypsum.com
nationalgypsum.com/espanol

Technical Information

Phone: (800) NATIONAL
(800) 628-4662
Fax: (800) FAX-NGC1
(800) 329-6421

National 
Gypsum®