

COMBINATION MULCH, SEED+FERTILIZER



SMART PATCH^{II}

BARE SPOT REPAIR FOR LAWNS




TALL FESCUE

GRASS SEED FERTILIZER MULCH


REPAIRS
BARE SPOTS
CAUSED BY
**PETS & LAWN
DISEASE**

SEE GROWTH IN
AS LITTLE AS

**5
DAYS***


EVEN GROWS ON
**SLOPES
AND HILLS**

COVERS
UP TO

**600 SQ.
FT.**

30 LBS
13.61 Kilograms


**SMART
PATCH^{II}**

TALL FESCUE
GRASS SEED FERTILIZER MULCH

COVERS
UP TO **600 SQ.
FT.**
30 LBS
13.61 Kilograms

PENNINGTON®

SMART PATCH[™]

BARE SPOT REPAIR FOR LAWNS



BEFORE
APPLICATION

AFTER*
14 DAYS

TALL FESCUE

GRASS SEED FERTILIZER MULCH

3 SIMPLE STEPS

FOLLOW THESE STEPS TO MAKE YOUR LAWN WHOLE AGAIN
3 PASOS SENCILLOS | Siga estos pasos para que su césped luzca como nuevo

STEP 1

PREPARE

Remove debris, then rake the soil to loosen and smooth the top layer.
PREPARE: Retire los desechos y luego rastille la tierra para aflojar y suavizar la capa superior.

STEP 2

APPLY

Spread mix according to chart below.
COLOQUE: Distribuya la mezcla de semillas de acuerdo con la tabla siguiente.

STEP 3

WATER

Keep the mixture moist until grass is at least 1" tall. The mulch turns a lighter color when it's dry indicating it's time to water again.
RIEGUE: Mantenga la mezcla húmeda hasta que la hierba tenga al menos 2,5 cm de altura. El abono se vuelve de un color más claro cuando se seca, lo que indica que es hora de volver a regar.



DRY
MULCH

WET
MULCH

HOW MUCH TO USE

OPTIMUM/BARE RATE
1 lb / 4 sq ft

EXTENDED COVERAGE
1 lb / 20 sq ft

WHY SMART PATCH?



REPAIRS
BARE SPOTS
CAUSED BY
PETS & LAWN DISEASE

HOW THIS WORKS.

Pet urine or lawn disease can create poor soil conditions, making it extremely difficult to grow grass in certain areas of your lawn. Smart Patch includes microbials that improve the health of your soil, making your lawn whole again.

SEE GROWTH IN
AS LITTLE AS

**5
DAYS***

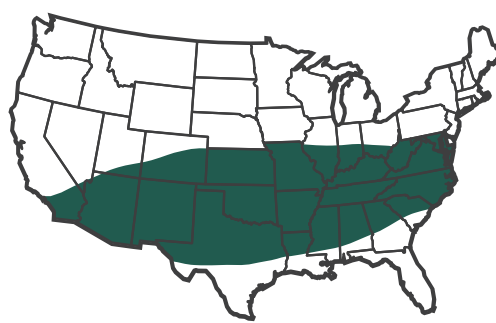
Smart Patch is worth the wait, but you won't have to! With our new patented American Ryegrass, developed at our research facility in Oregon, you'll see growth in as little as 5 days and full results as soon as 14 days.



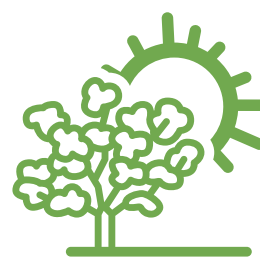
EVEN GROWS ON
**SLOPES
AND HILLS**

Nothing is more frustrating than a rainstorm washing away all of your new seed. Smart Patch includes a water-soluble tackifier that acts as a blanket for your seed, even protecting it on slopes and hills against the rain.

WHERE WILL THIS SEED GROW BEST?



Ideal planting zone
in highlighted area



FOR AREAS THAT GET
**4-6 HOURS
OF SUN A DAY**

WHEN SHOULD THE SEED BE PLANTED?

Spring or Fall



**MADE IN
THE USA**
from USA sourced or
grown resources



**98% OF SMART PATCH[™]
INGREDIENTS ARE BIODEGRADABLE
AND MADE FROM
98% RENEWABLE RESOURCES**

MORE OF A VISUAL LEARNER?

Visit us at youtube.com/penningtoncorp



LAWN GEEK? US TOO.

Check out our content on pennington.com



PENNINGTON. THE GRASS IS GREENER.™

We work hard every day to cultivate the best grass seed products available, so you can repair your yard with peace of mind. Our grass seed is bred to not only look better but also be water-efficient[†] and disease-resistant.



WE STAND BEHIND OUR PRODUCTS.

If you are not satisfied, please let us know why and contact us about a refund. Keep your bag and proof of purchase.

MAIL TO:
Pennington Seed, Inc.
Customer Service Dept.
PO Box 290
Madison, GA 30650

CALL US
1.800.285.SEED
WEBSITE
pennington.com

300532155 | SP45_v3



†versus ordinary seed
*Under ideal growing conditions
NOTICE: The color green as applied to grass seed is a registered trademark that is registered in the U.S. Patent Trademark Office by Pennington Seed, Inc. Pennington uses the safest colorant available.
Warning: Treated Seed. Do not use for food, feed, or oil purposes. Store away from feeds and foodstuffs. Keep out of reach of children. If swallowed, call poison control. This coating protects with a fungicide to help keep the seeds safe from diseases that harm them.
Apply only to actively growing turf. Do not apply near water, storm drains, or drainage ditches. Do not apply if heavy rain is expected. Apply this product only to your lawn/garden, and sweep any product that lands on the driveway, sidewalk, or street, back onto your lawn/garden. Check with your local cooperative extension agency to obtain specific information on local turf best management practices. Check with your county or city government to determine if there are local regulations for fertilizer use.
NOTICE: Arbitration/conciliation/mediation required by several states. Under the seed laws of several states, arbitration, mediation, or conciliation is required as a prerequisite to maintaining a legal action based upon the failure of seed, to which this notice is attached, to produce as represented. The consumer shall file a complaint along with the required filing fee with the commissioner/director/secretary of agriculture, seed commissioner, or chief agricultural officer within such a time as to permit inspection of the crops by the designated agency and the seedsman from whom the seed was purchased. A copy of the complaint shall be sent to the seller by certified or registered mail or as otherwise provided by state statute.
Important: Do not apply weed control products prior, during, or within 10 weeks of seeding areas.



**CENTRAL
GARDEN & PET**

The Grass is Greener, Pennington, and Pennington with design are trademarks of Pennington Seed, Inc. Central Garden & Pet and Central Garden & Pet with design are trademarks of Central Garden & Pet Company.
U.S. Pat # 10,721,879