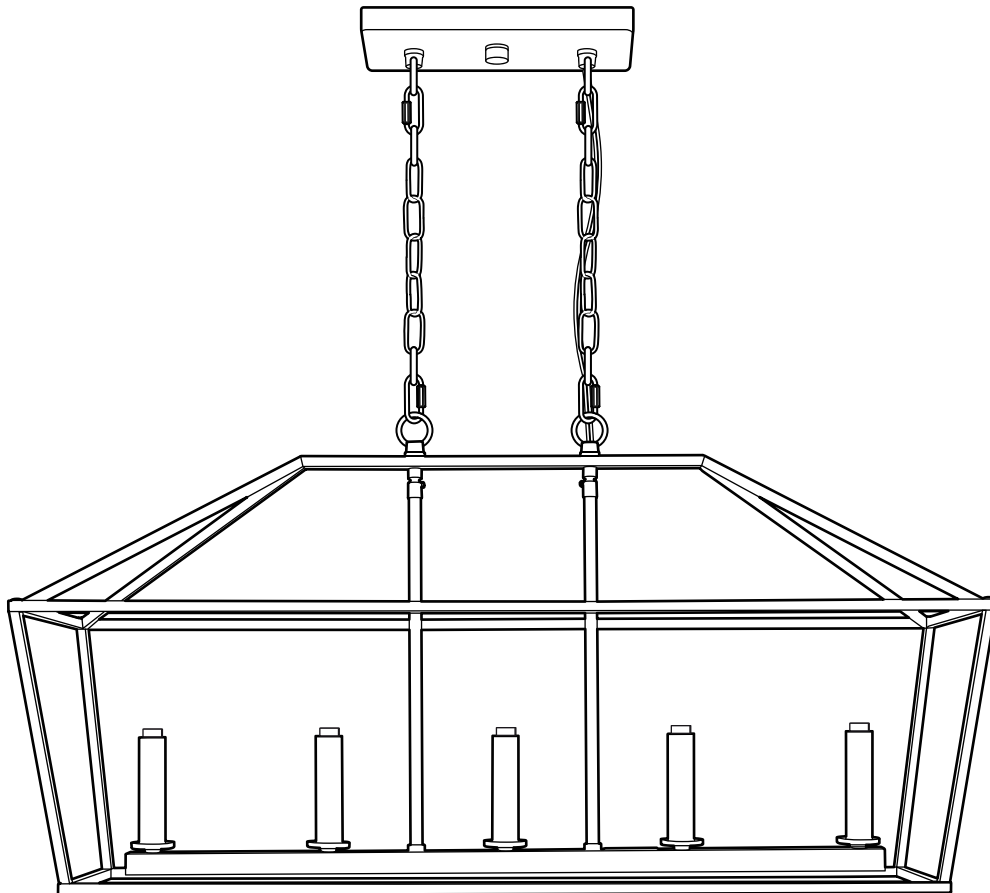


5-LIGHT LINEAR CHANDELIER

Español p. 14

ATTACH YOUR RECEIPT HERE



Purchase Date _____



APPROVED FOR USE
IN DAMP LOCATIONS

Questions, problems, missing parts?

Before returning to your retailer, contact us on:

800-527-1292, 8:30 a.m. - 5 p.m., CST, Monday - Friday.

TABLE OF CONTENTS

Package Contents 3

Hardware Contents 4

Safety Information 4

Preparation 4

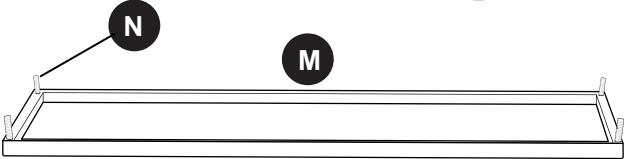
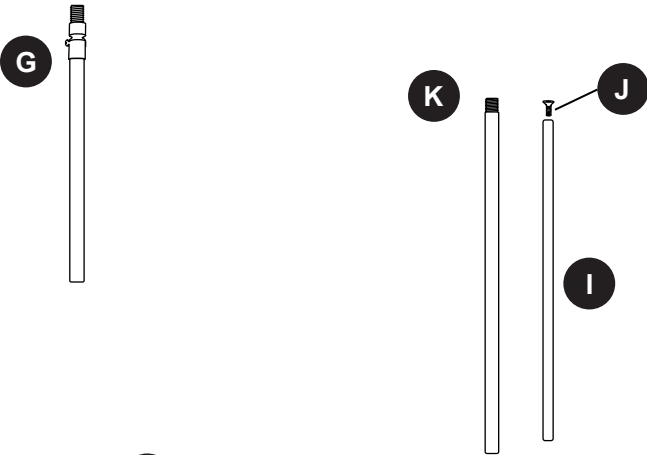
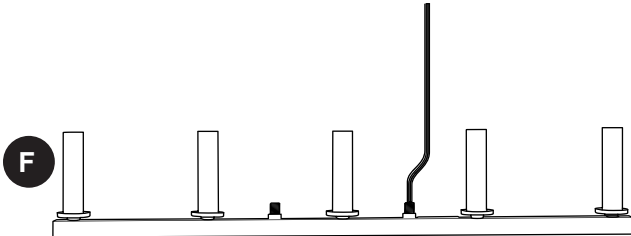
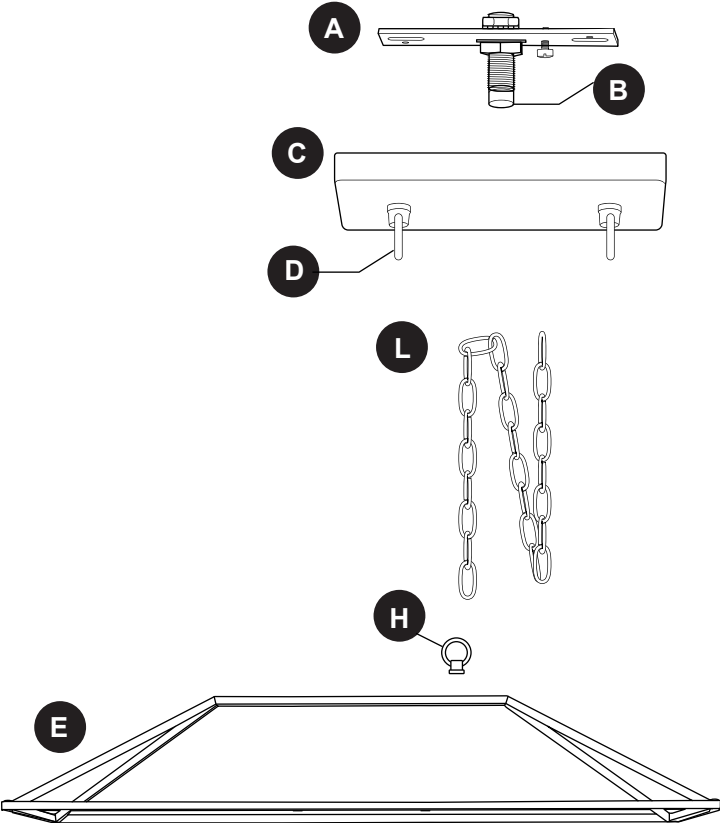
Assembly Instructions 5

Care and Maintenance 13

Troubleshooting 13

Warranty 13

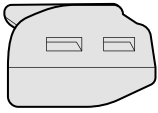
PACKAGE CONTENTS



| PART | DESCRIPTION | QUANTITY |
|------|--|----------------|
| A | Mounting Strap | 1 |
| B | Decorative Nut (preassembled to mounting strap (A)) | 1 |
| C | Canopy | 1 |
| D | Canopy Loop (preassembled to canopy (C)) | 2 |
| E | Frame | 1 |
| F | Socket Base | 1 |
| G | Fixture Rod (one preassembled to socket base (F)) | 2 |
| H | Fixture Loop | 2 |
| I | Support Rod | 4 |
| J | Screw (preassembled to mounting support rod (H)) | 4 + 2 extra |
| K | Rod | 4 |
| L | Chain | 2 |
| M | Base | 1 |
| N | Post (preassembled to base (L)) | 4 |

HARDWARE CONTENTS (shown actual size)

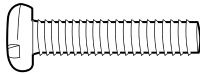
AA



Lever Wire
Connector

Qty. 3

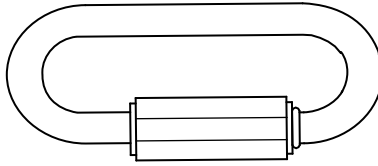
BB



Machine
Screw

Qty. 2

CC



Connecting
Chain Link

Qty. 4

DD



Screw Cap

Qty. 4
+ 2 extra



SAFETY INFORMATION

READ AND SAVE THESE INSTRUCTIONS.



DANGER

- For your protection and safety, carefully read and understand the information provided in this manual completely before attempting to assemble, install or operate this product. Failure to do so could lead to fire, electrical shock or other injuries that could be hazardous or even fatal.
- **TURN OFF ELECTRICITY** at main fuse box (or circuit breaker box) before beginning installation by removing the fuse (or switching the circuit breaker off).
- **DO NOT** connect this fixture to an electrical system that does not provide a means for equipment grounding. Never use a fixture in a two-wire system that is not grounded. Installing a fixture into an electrical system not having a proper grounding means could cause metal parts of the fixture to carry electrical currents if any of the fixture wires, wire connections or splices were to become broken, cut or loose during the mounting or normal operation of the fixture. Under this condition, anyone coming in contact with the fixture would be subject to electrical shock, which could cause serious injury or death.
- **DO NOT** connect the BARE or GREEN insulation fixture ground wire to the BLACK (HOT) current-carrying wire or the WHITE (NEUTRAL) house wire. Connection of the BARE or GREEN fixture ground wire to the BLACK or WHITE house wires may cause metal parts of the fixture to carry electrical currents. Under this condition, anyone coming in contact with the fixture will receive electrical shock, which could cause serious injury or death.
- **DO NOT** damage or cut the wire insulation (covering) during installation of fixture. **DO NOT** permit wires to contact any surface having a sharp edge. To do so may damage or cut the wire insulation, which could cause serious injury or death from electrical shock.



WARNING

- All electrical connections must be in agreement with local codes and ordinances, the National Electric Code (NEC) and ANSI/NFPA 70-1999. Contact your municipal building department to learn about your local codes, permits and/or inspections. Risk of fire - most dwellings built before 1985 have supply wire rated for 140 °F. Consult a qualified electrician before installation.
- To avoid personal injury, the use of gloves is necessary while handling fixture parts with sharp edges.

SAFETY INFORMATION

WARNING

- DO NOT suspend any fixture by the house wires. A fixture must always be mounted directly to an outlet box or to a mounting plate which is first attached to the outlet box. Wire connectors will not support the weight of a fixture. Suspending a fixture by the house wires and wire connectors will result in the fixture falling, with the possibility of personal injury and the danger of electrical shock or fire.
- To reduce the risk of fire, electrical shock or personal injury, lever wire connectors provided with this light fixture are designed to accept only one 12-gauge house wire and one lead wire from the light fixture. If your house wire is larger than 12-gauge or there is more than one house wire to connect to the corresponding fixture lead wires, consult an electrician for the proper size lever wire connectors to use.
- To reduce the risk of damage to the fixture, DO NOT use power tools to assemble any part of the fixture.

CAUTION

- If you are not sure the lighting system has a grounding means, DO NOT attempt to install this fixture. Contact a qualified, licensed electrician for information regarding the proper grounding methods as required by the local electrical code in your area.
- All fixtures must be mounted to an outlet box that is supported by the building structure.
- If a dimmer control switch is used with this fixture, obtain professional advice to determine the correct type to use as well as the electrical rating required.
- DO NOT use bulbs having a wattage greater than the maximum value stated on the fixture. The use of bulbs with higher wattage than specified will increase temperatures and risk of fire.

PREPARATION

Before beginning assembly of product, make sure all parts are present. Compare parts with package contents list and hardware contents list. If any part is missing or damaged, do not attempt to assemble the product.

Estimated Assembly Time: 30 minutes

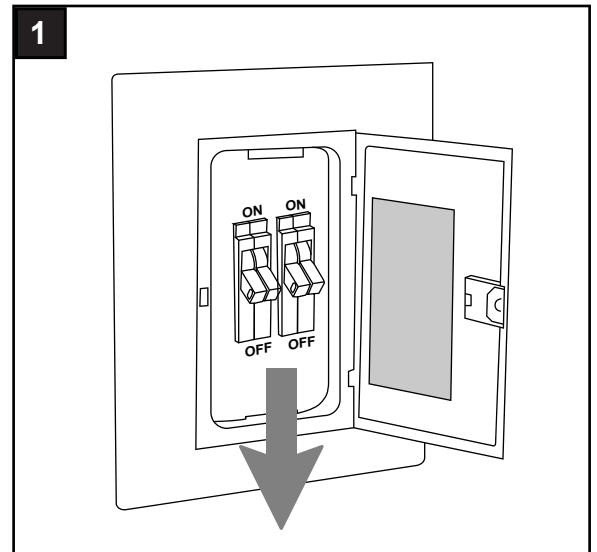
Tools Required for Assembly (not included): Phillips Screwdriver, Pliers, Wire Cutters, Wire Strippers, Safety Glasses, Stepladder, Electrical Tape, Gloves

Helpful Tools (not included): A/C Tester Light, Do-It-Yourself Guide, Soft Cloth

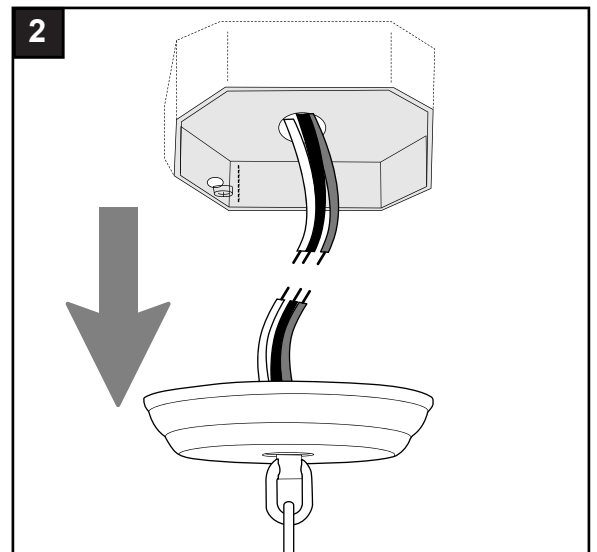
ASSEMBLY INSTRUCTIONS

1. Turn off circuit breakers and wall switch to the fixture supply line leads.

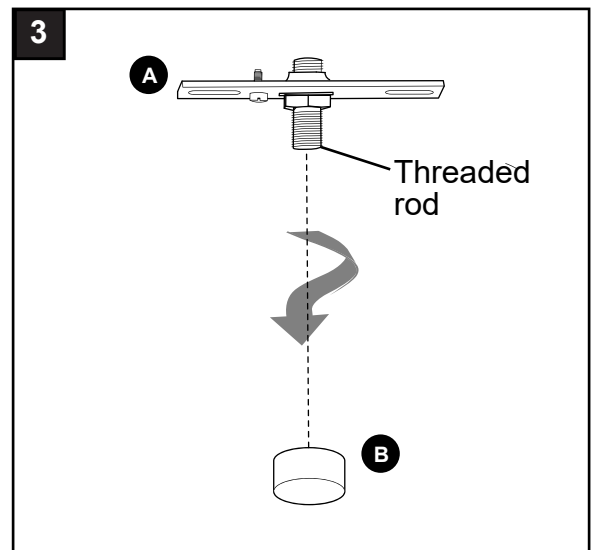
⚠ DANGER: Failure to disconnect power supply prior to installation may result in serious injury or death.



2. Remove existing fixture and disconnect all electrical wiring.



3. Remove decorative nut (B) from threaded rod on mounting strap (A).



ASSEMBLY INSTRUCTIONS

4. **⚠ CAUTION:** Make sure the outlet box can support 35 lbs. hanging weight. Use *metal* outlet box; plastic outlet boxes are not recommended.

Attach mounting strap (A) to outlet box (not included) using the existing washers and outlet box screws or the machine screws (BB). Tighten machine screws (BB) completely to secure mounting strap (A).

NOTE: If the outlet box screws required for your outlet box are of a different size than the machine screws (BB), consult with a licensed electrician before proceeding.

Hardware Used

BB Machine Screw  x 2

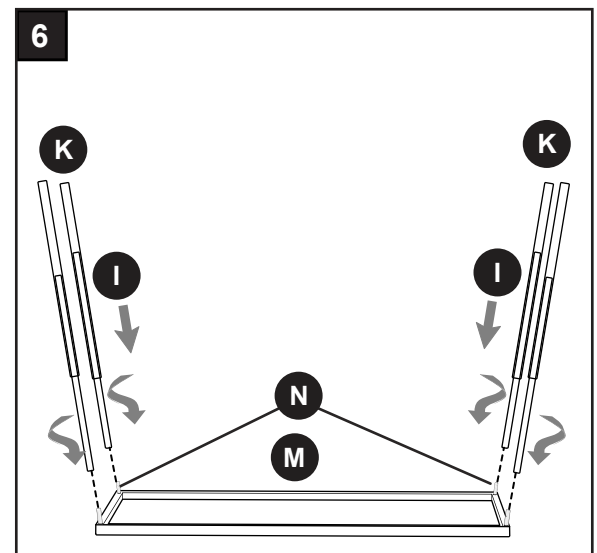
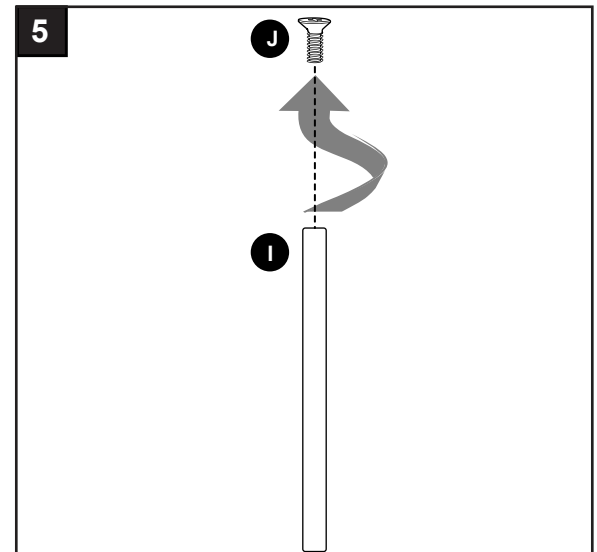
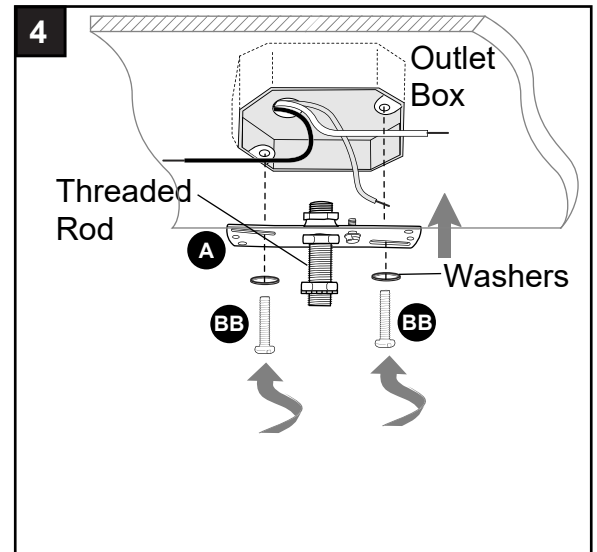
5. Remove screws (J) from support rods (I).

Save screws (J) for later use.

6. Place base (M) on a flat surface. Thread one support rod (I) into a post (N). Repeat with remaining support rods (I) and posts (N).

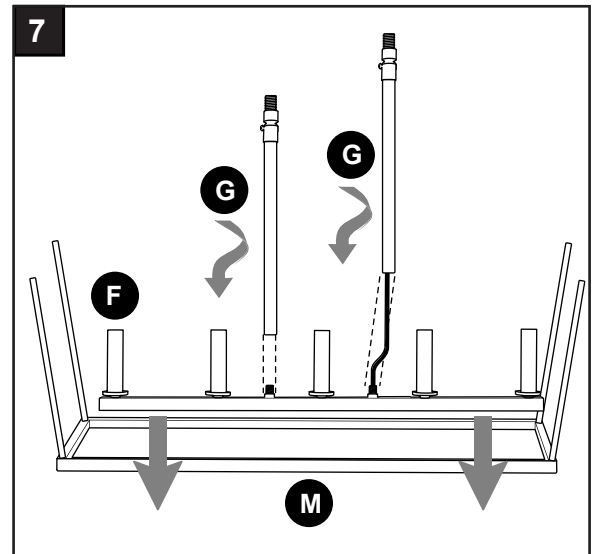
Slide one rod (K) over each support rod (I).

NOTE: Make sure to turn each rod (I) so that rods (I) and base (M) are flush against each other.



ASSEMBLY INSTRUCTIONS

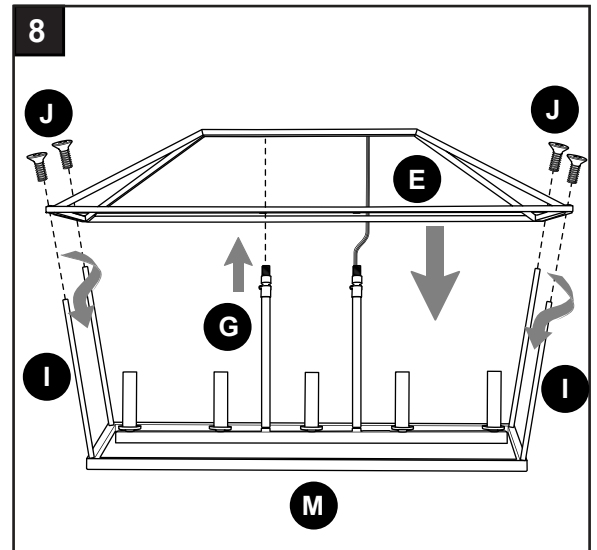
7. Unwrap BARE fixture wire from BLACK and WHITE fixture wires. Place socket base (F) in center of base (M). Attach fixture rods (G) to socket base (F).



8. Place frame (E) on top of rods (I), aligning holes on frame (E) with holes in support rods (I).

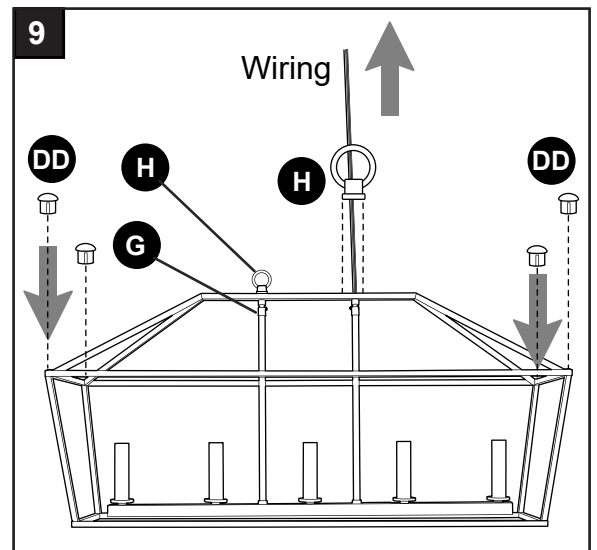
Re-insert screws (J) previously removed (Step 5, page 7) and partially tighten screws (J).

NOTE: Do not completely tighten screws (J) until frame (E) has all screws (J) partially attached.



9. Feed wiring through bottom of one of the fixture loops (H). Attach both fixture loops (H) to threaded rods at top of fixture rods (G).

Place caps (DD) into corner holes of frame (E).



Hardware Used

DD Screw Cap



x 4

ASSEMBLY INSTRUCTIONS

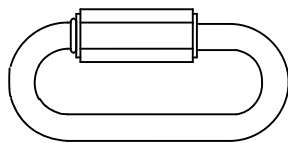
10. Locate connecting chain links (CC) in hardware pack and open all of them. Attach two connecting chain links (CC) to fixture loops (H) at the top of the fixture rods (G) and then attach the chains (L) to the connecting chain links (CC). Close these connecting chain links (CC).

Hook the other connecting chain links (CC) to the canopy loops (E)--leave these connecting chain links (CC) open for now.

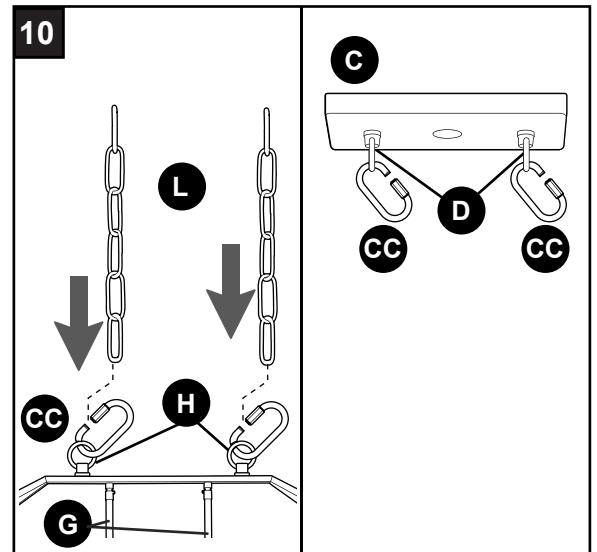
Hardware Used



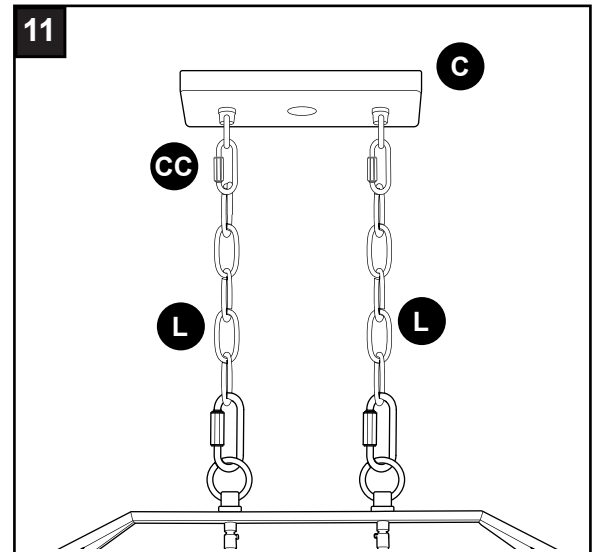
Connecting Chain Link



x 4

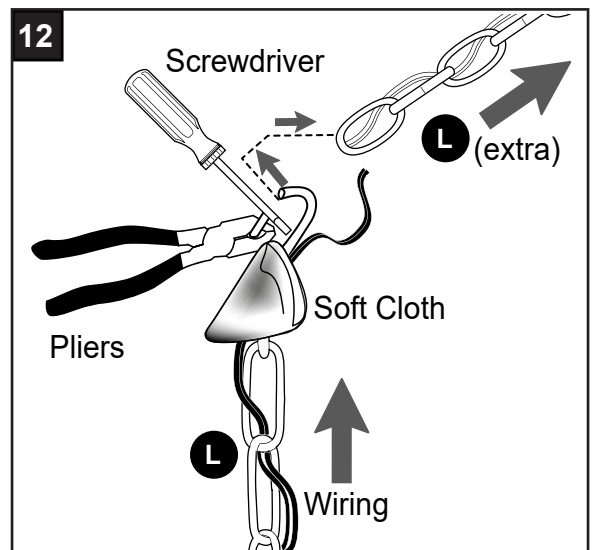


11. Attach chains (L) to open connecting chain links (CC) on canopy (C) and close connecting chain links (CC).



12. Determine the hanging length for fixture. ***If you will be using the chains (L) as they are, please skip to the next paragraph in this step. If you wish to shorten chains (L),*** use pliers, a screwdriver and a soft cloth (none included) to open the link of chains (L) at length chosen. Remove any extra chain (L) at this time, including the link that was opened to shorten the chain.

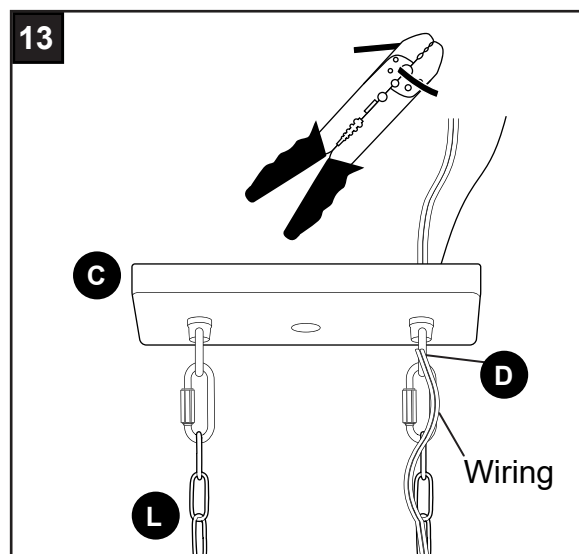
Feed wiring from socket base (J) up through chain (L) to pre-determined length.



ASSEMBLY INSTRUCTIONS

13. Feed wiring through corresponding canopy loop (D) on canopy (C). Gently push wiring until it comes through top of the canopy (C). Pull all wiring until there is little to no extra slack left in the wires running through the chain (L).

Prepare wire by stripping 1/2 in. of insulation from wire ends using wire strippers (not included).



ASSEMBLY INSTRUCTIONS

- 14a. **IMPORTANT:** Each wire connection is made by firmly raising the levers on each lever wire connector (AA), as shown. Then, ONE wire is inserted into each opening.

⚠ WARNING: In order for wire connections to be secure, all levers on the lever wire connectors (AA) must be completely returned to their original position.

- 14b. **⚠ WARNING:** NEVER connect ground wire to WHITE or BLACK power supply wires.

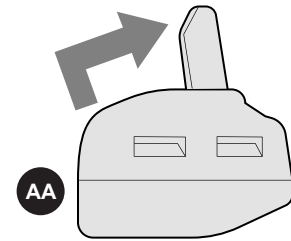
Insert BARE/GREEN ground wire from outlet box and BARE ground wire from canopy (C) into openings in lever wire connector (AA).
Insert RIBBED wire from canopy (C) and WHITE wire from outlet box into openings in lever wire connector (AA).
Insert SMOOTH wire from canopy (C) and BLACK wire from outlet box into openings in lever wire connector (AA).

⚠ WARNING: GENTLY pull on wires in each lever wire connector (AA) to confirm the lock is engaged and that wires are secure.

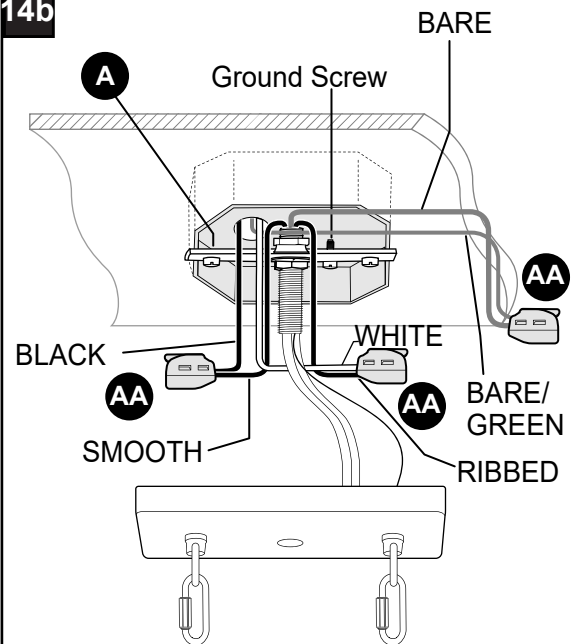
⚠ WARNING: To reduce the risk of fire, electrical shock or personal injury, lever wire connectors (AA) are designed to accept only one 12-gauge house wire and one lead wire from the light fixture. If your house wire is larger than 12-gauge or there is more than one house wire to connect to the corresponding fixture lead wires, consult an electrician for the proper size lever wire connectors to use.

NOTE: If outlet box does not have a BARE/GREEN wire, the BARE ground wire from canopy (C) should be attached to the GREEN SCREW (labeled GND) on mounting strap (A).

14a



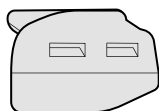
14b



Hardware Used

AA

Lever Wire Connector



x 3

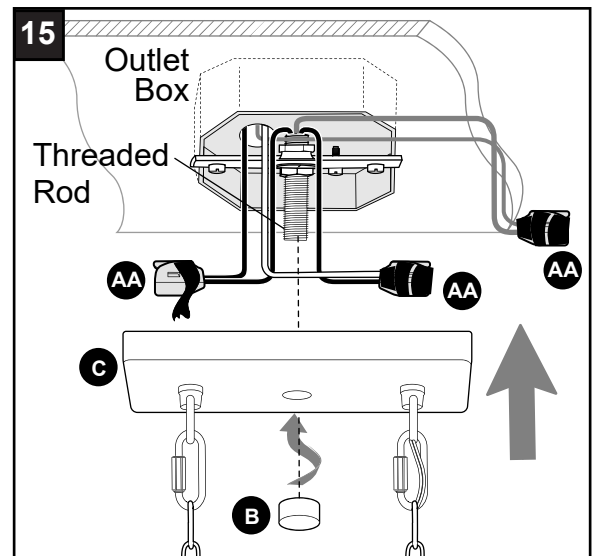
ASSEMBLY INSTRUCTIONS

15. Wrap electrical tape (not included) around each individual lever wire connector (AA) down to the wire.

⚠ WARNING: Make sure no bare wire or wire strands are visible after making connections.

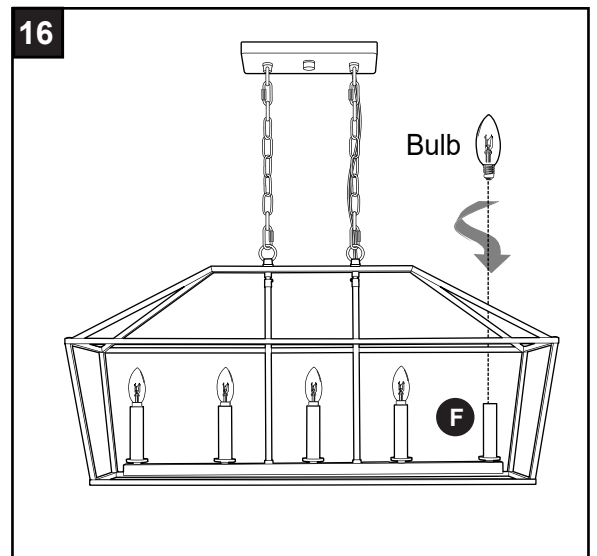
Carefully arrange excess wiring and lever wire connectors (AA) within outlet box.

Align hole in center of canopy (C) with threaded rod on mounting strap (A). Secure canopy (C) to mounting strap (A) using the decorative nut (C) previously removed (Step 3, Page 6).



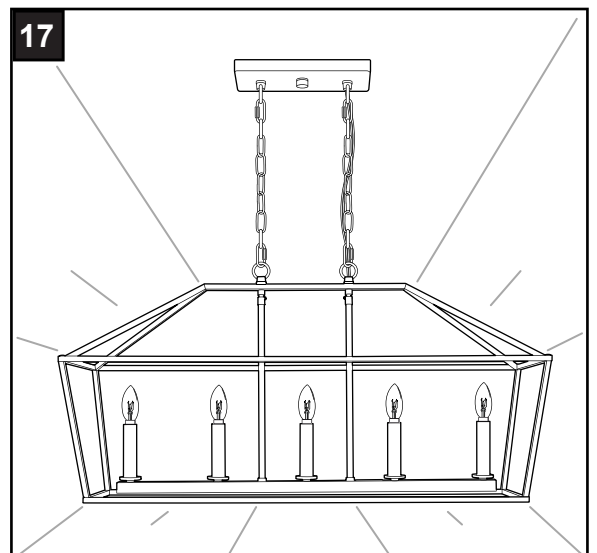
16. Install 5 candelabra-base incandescent bulbs (not included). Use 60-watt max. incandescent bulbs or CFL/LED equivalent.

⚠ WARNING: When replacing bulb(s), allow bulb(s) and socket base (F) to cool down before touching.



17. Restore power and test fixture.

If light does not function, please refer to TROUBLESHOOTING on the following page.



CARE AND MAINTENANCE

- Shut off main power supply or unplug. Wipe with soft cloth or use window cleaner. Do not use an abrasive cleaner.

TROUBLESHOOTING

⚠ WARNING: Before beginning work, shut off the power supply to avoid electrical shock.

| PROBLEM | POSSIBLE CAUSE | CORRECTIVE ACTION |
|--|--|---|
| Bulb(s) will not light. | 1. Bulb(s) is/are burned out. 2. Power is OFF. 3. Faulty connection. | 1. Replace light bulb(s). 2. Make sure power supply is ON. 3. Check wiring and all connections. |
| Fuse blows out or circuit breaker trips. | 1. Crossed wires. 2. Power wire is grounding out. | 1. Check wiring. 2. Check all connections. |

WARRANTY

The distributor warrants all of its lighting fixtures against defects in materials and workmanship for one (1) year from the date of purchase. If within this period the product is found to be defective, take a copy of the bill of sale as a proof of purchase and the product in its original carton to the place of purchase. The distributor will, at its option, repair, replace or refund the purchase price to the consumer. All costs of installation and removal of the fixture is the responsibility of the consumer. This warranty does not cover fixtures becoming defective due to misuse, accidental damage or improper handling and/or installation and specifically excludes liability for direct, incidental or consequential damages, improper packaging of returned products and acts of God. As some states do not allow exclusions of limitations on an implied warranty, the above exclusion and limitation may not apply. This warranty gives you specific rights and you may also have other rights which may vary from state to state.