

**greenworks®**

**MAX POWER™  
pro**

**80V**

**VENTURE**  
S E R I E S   C O M M U T E R

# Quick Start Commuter e-Bike Guide

Before you take off on your first excursion, there's some set up to do. (But don't worry- it's easy!)

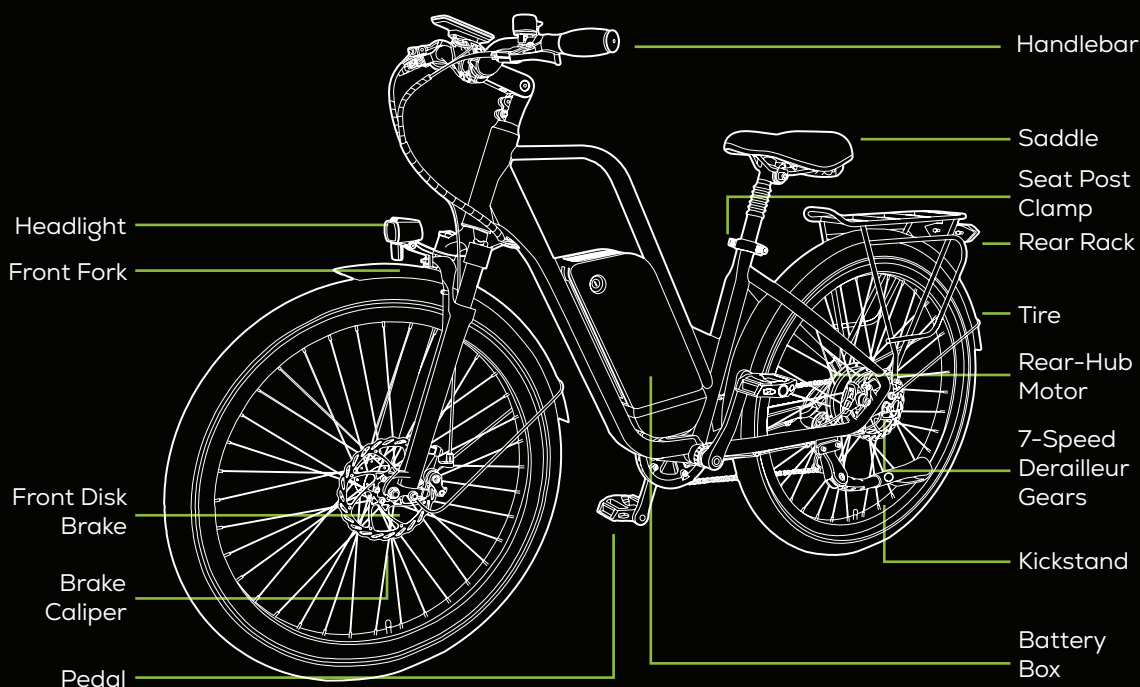
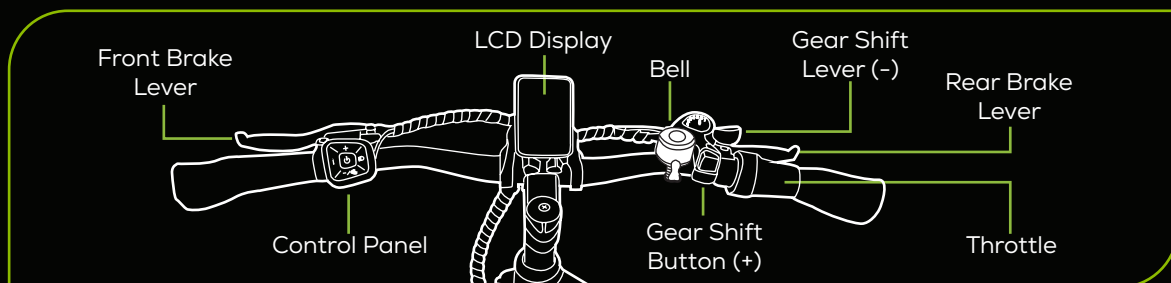


You can also scan here  
for more information

**Commuter  
e-Bike**

**27.5"**

# Getting to Know Your Commuter e-Bike



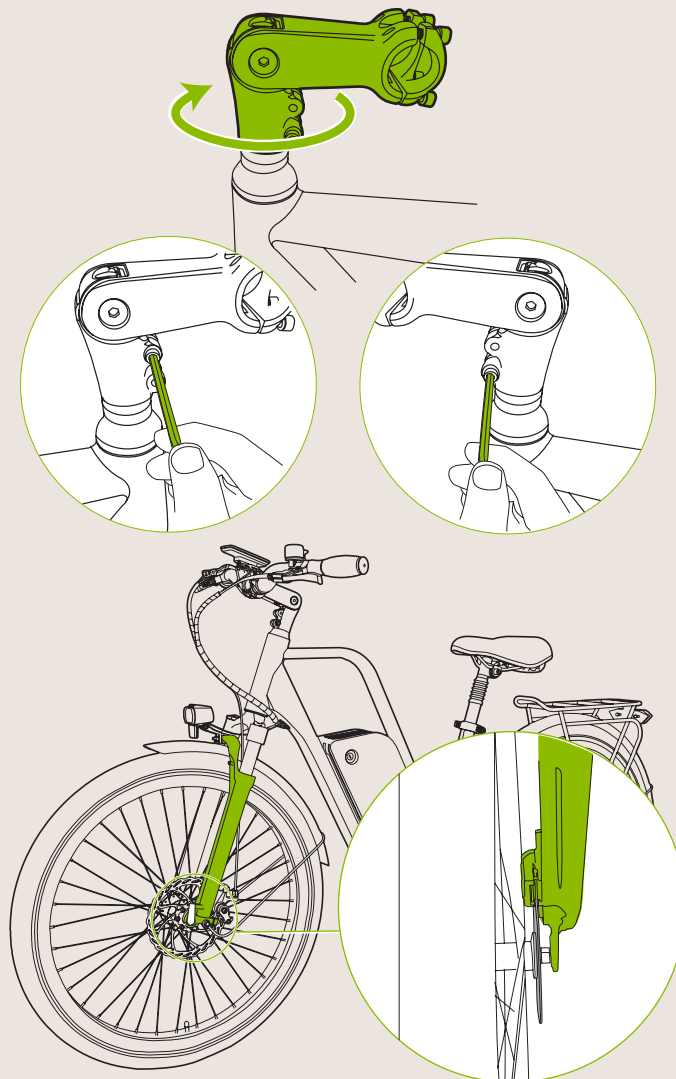
**VENTURE**  
SERIES COMMUTER

Commuter e-Bike **27.5"**

---

# Assemble Your Commuter e-Bike

Use the included tools to assemble: front wheel, handlebars, seat and pedals. See manual or visit [greenworkstools.com](http://greenworkstools.com) for detailed instructions



# Charge + Power Your Commuter e-Bike

Before your first ride, charge your battery fully. Use the included charger and a standard household outlet. Fully charge in up to 90mins. Unlock battery box and insert battery.



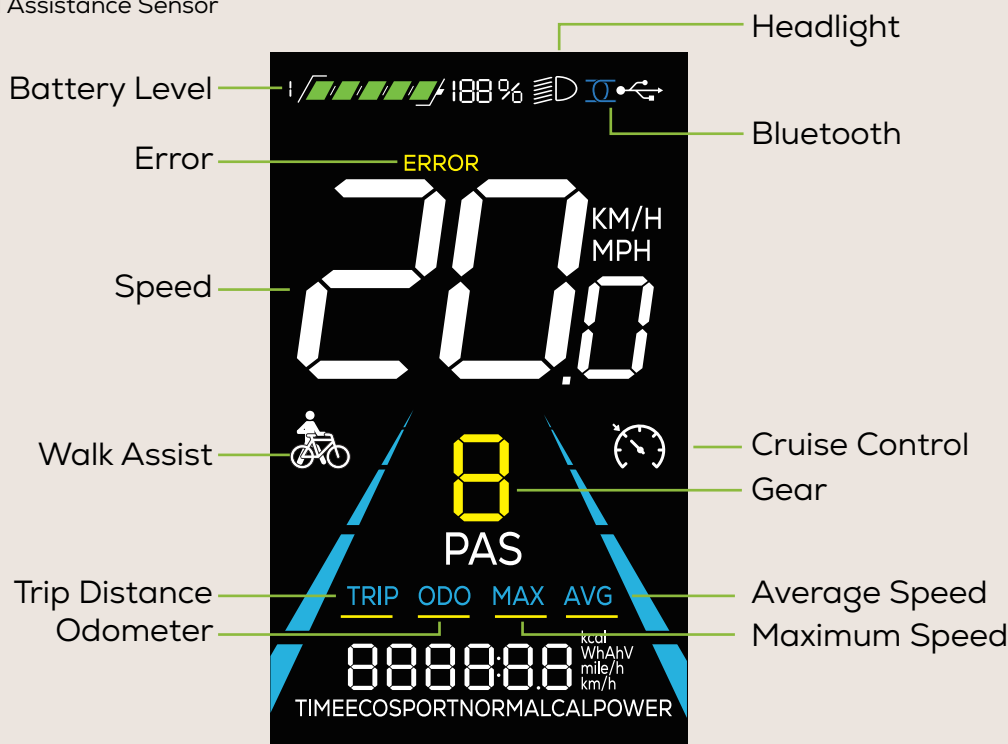
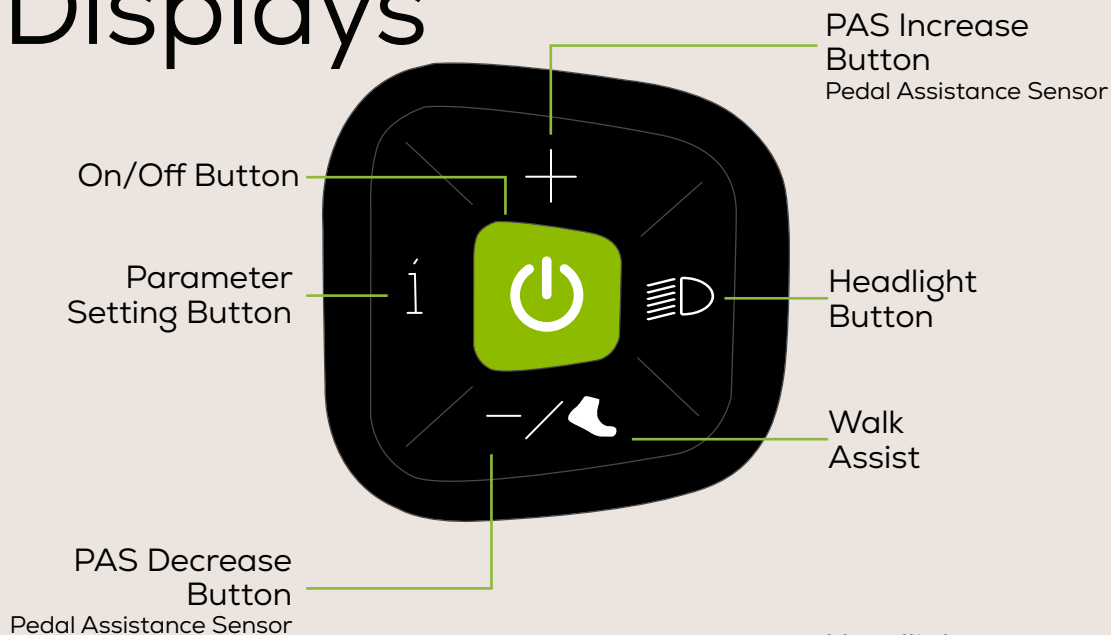
---

# Safety & Your Commuter e-Bike

In most of the US, electric bikes are considered bicycles and can be used in the same way as a pedal-only bicycle. Riders should be aware of e-bike rules and regulations in their area before riding. Remember to always wear a helmet.



# Commuter e-Bike Displays



# 80V Commuter e-Bike Charge Times

Rapid charge time is required to provide maximum productivity. That's why we offer multiple charging options for the user. But what is just as important to runtime? Charge time!



**4.0Ah**



**5.0Ah**



**8.0Ah**

**4A**



**60**  
Min

Charge Time

**75**  
Min

Charge Time

**120**  
Min

Charge Time

**6A**



**40**  
Min

Charge Time

**50**  
Min

Charge Time

**60**  
Min

Charge Time

**8A**



**60**  
Min

Charge Time

**75**  
Min

Charge Time

**120**  
Min

Charge Time

80V  
75+  
TOOLS

Any **greenworks** 80V  
Battery Fits 75+ Tools



Lawn / Garden



Indoor Cleaning



Power Systems



Outdoor Cleaning



Lifestyle



Mobility



Coming  
Soon

+ Life.Powered.™  
by **greenworks**