

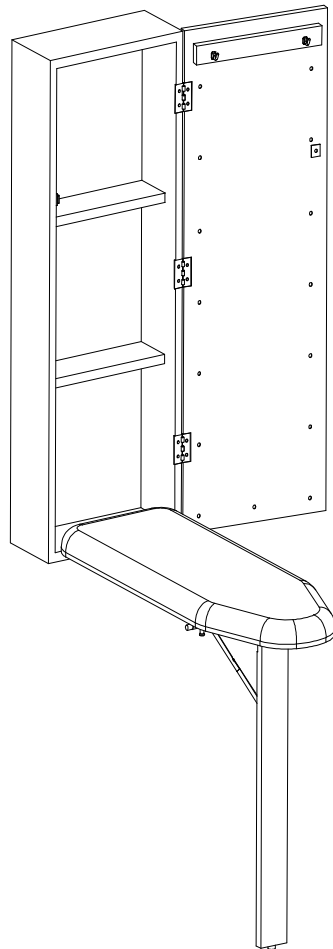
**HZ348000TX**

# **Wall-Mount Ironing Center Assembly Instruction**



For assistance with assembly contact:  
Southern Enterprises Inc.  
Customer Service 1-800-633-5096  
[service@seidal.com](mailto:service@seidal.com)  
[www.seidal.com](http://www.seidal.com)

**Max load on ironing board 40lb**



© Southern Enterprises Inc. All Right Reserved.

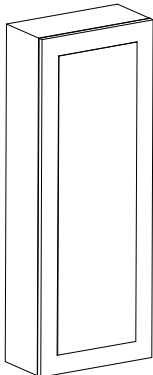
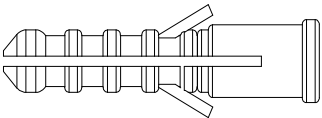
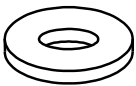
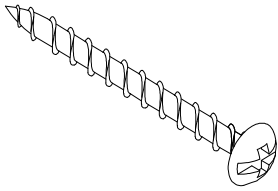
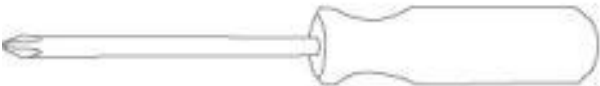
# HZ348000TX

## Wall-Mount Ironing Center

### Parts List

Please review all parts and hardware before disposing of any packaging.  
Call Customer Service if missing hardware. Do not return to store/retailer.  
Screws shown actual size. Using a screw that is too long will cause damage.  
Before beginning assembly, separate each type of screw. Carefully study the screw diagrams below.

**Suggested tools: Phillip head screw driver, power drill, 3/16" drill bit, 24" level, and a tape measure. Unit needs to be hung on wall stud for more security and stability.**

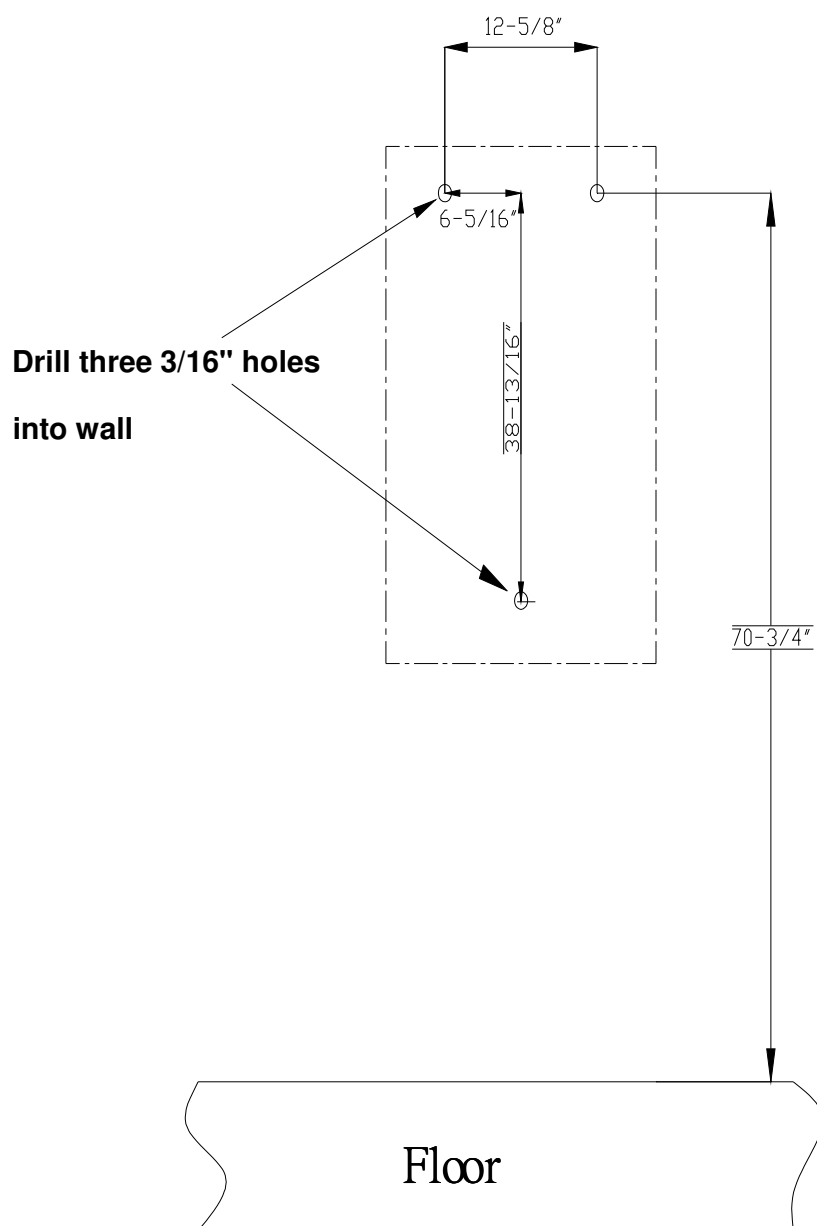
<b>(1) Cabinet</b>  <b>1 PC</b>	<b>(2) Plastic Wall Anchor</b>  <b>3 PCS</b>  <b>1 extra included</b>	<b>(3) Washer</b>  <b>3 PCS</b>  <b>3/16"x1/2"</b>
<b>(4) Screw</b>  <b>3PCS</b>  <b>Ø 4mm x2"</b>		
<b>Care and Cleaning Instructions:</b> Before using , wipe with a clean , dry cloth. Periodically apply furniture wax to renew The finish. Avoid rubbing or scratching the surface with rough or abrasive objects.		For replacement parts or questions, please call Customer Service at 1-800-633-5096. Do not return product to store. Please call manufacturer for assistance, questions or parts.
<b>Assembly Tool Required</b>  <b>No.2 Phillips Screwdriver</b>		

**Tool List: 3/16" drill bit, drill, tape measure and pencil.**

# HZ348000TX

## Wall-Mount Ironing Center

### Assembly Instructions



**Figure 1-Screw Hole Location**

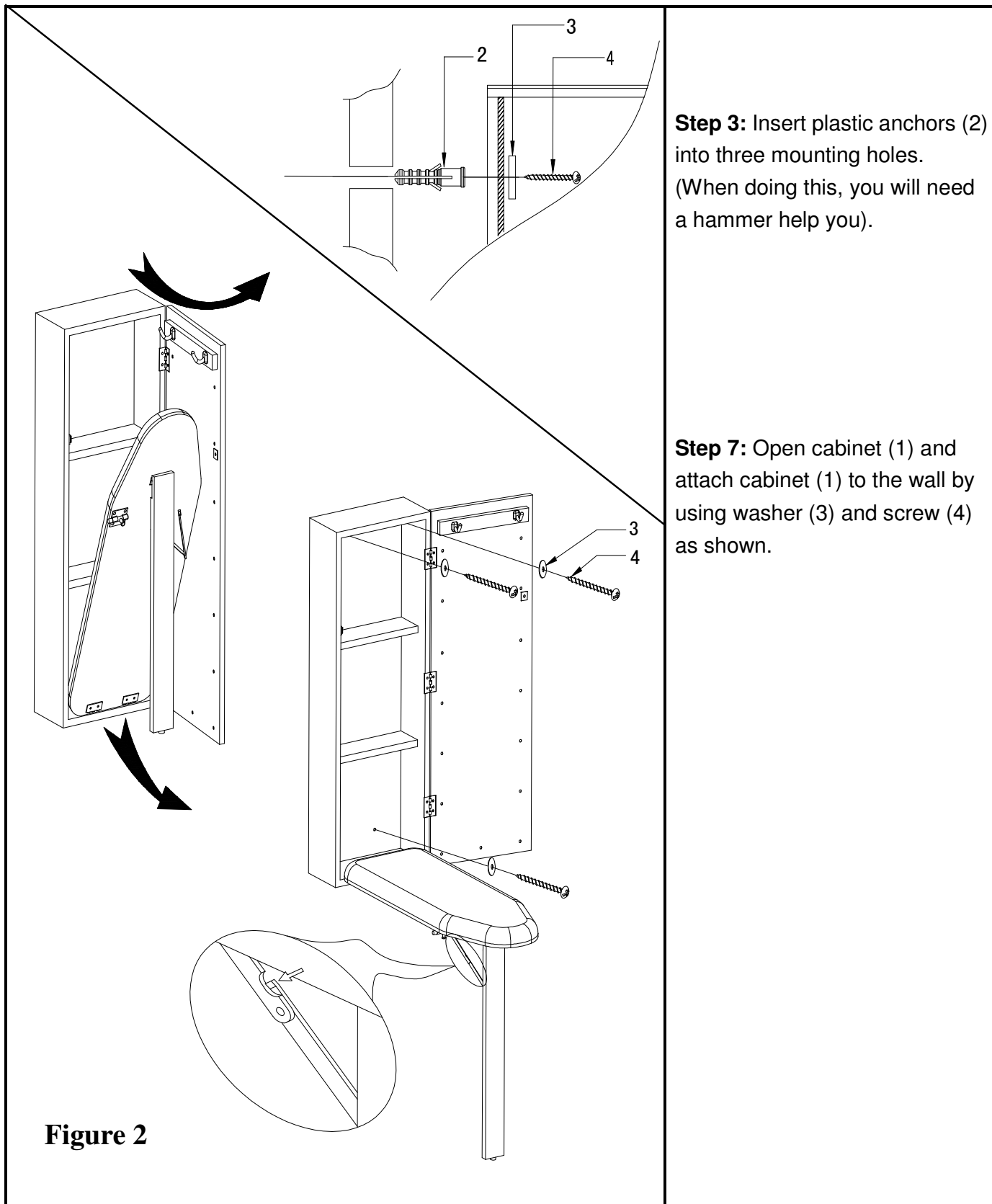
**Step1:** Measure the wall and mark the location of the center of each mounting holes. See Figure 2.

**NOTICE**

**If your wall studs are 12" apart, please make sure the top 2 holes are located on wall stud. However, at least one top hole must located on a wall stud.**

Using the level, make sure that all marks are level on the wall.

**Step 2:** Using power drill and 3/16" drill bit, drill three 3/16" holes through the wallboard at the mounting hole marks.



Customer Service 1-800-633-5096

[service@seidal.com](mailto:service@seidal.com)

Southern Enterprises, Inc.

600 Freeport Parkway, Suite 200

Coppell, Texas 75019

We'd love to hear from you! Email us photos of our products in your home at [sei@seidal.com](mailto:sei@seidal.com) and we might feature it on our site or use it to model one of our inspirational photos.

**“PARTS WILL BE SENT IF AVAILABLE FROM SEI”**

## Parts Replacement Form

### Customer Information

Name \_\_\_\_\_

Address \_\_\_\_\_

City/State/Zip Code \_\_\_\_\_

Phone Number \_\_\_\_\_

Please indicate where you purchased this item: Store/ Website/ Catalog  
\_\_\_\_\_

Please indicate color/size/style number:  
\_\_\_\_\_  
\_\_\_\_\_

Style No

Parts Letter

Parts Description

Quantity Needed

Missing or damaged hardware and/ or parts will be replaced free of charge. We do not sell parts. Southern Enterprises Inc. will provide replacement parts for only those items purchased within the last 9 months. If this product has not been purchased from our retail affiliates (within 9 months), we are under no obligation to provide parts or replacements merchandise. Parts will not be available for items arriving fully assembled.



Customer Service 1-800-633-5096

[service@seidal.com](mailto:service@seidal.com)

Southern Enterprises, Inc.

600 Freeport Parkway, Suite 200

Coppell, Texas 75019