

Easy-Install

Modern Sliding Door Track System

U.S. Patent No.: US D1,036,236 S

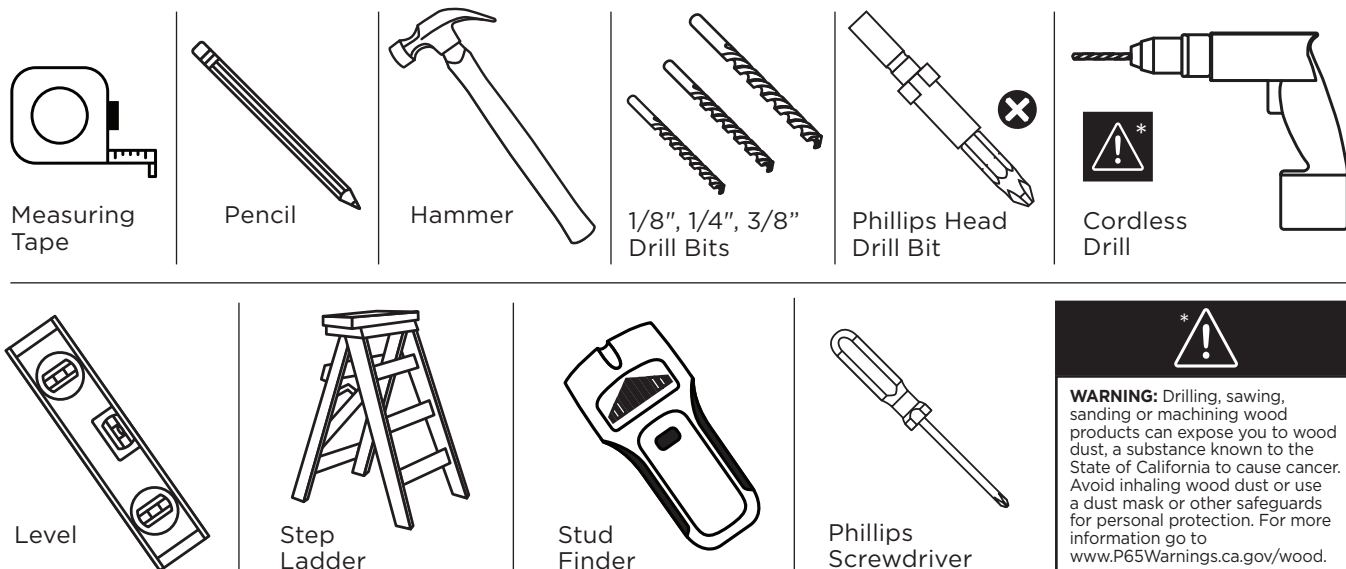
INSTALLATION INSTRUCTIONS



REQUIRES
TWO
PEOPLE

Easy-Install Modern Sliding Door track System

TOOLS REQUIRED (NOT PROVIDED)



PLEASE READ CAREFULLY

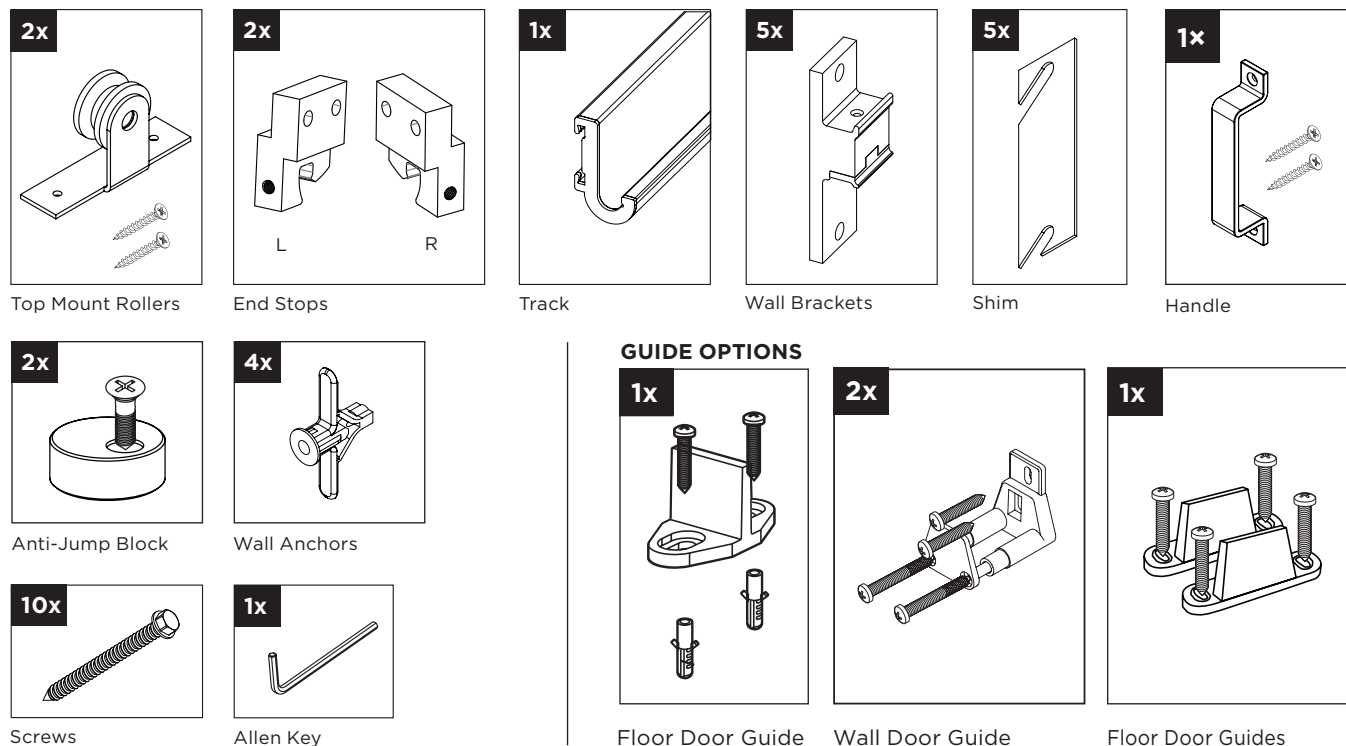
- Read all instructions carefully.
- Protect your eyes by wearing safety goggles.
- Keep the installation area free of clutter.
- Follow each step completely before starting the next step.

IMPORTANT!

VERIFY THAT ALL PARTS ARE INCLUDED IN THE PACKAGING. IF ANY PARTS ARE MISSING, DO NOT RETURN THIS PRODUCT TO THE STORE.

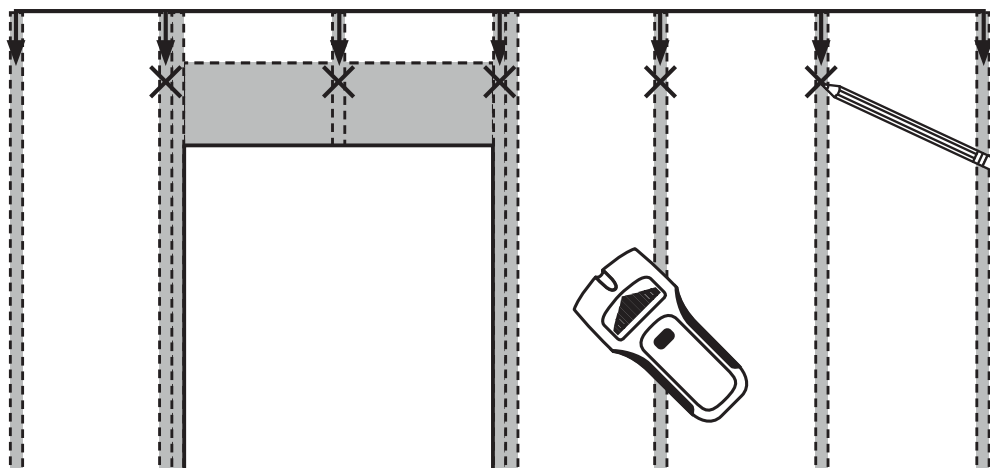
FOR PARTS ASSISTANCE, PLEASE CALL 1-800-493-5263 BETWEEN 8:30 AM AND 4:30 PM EST, MONDAY TO FRIDAY.
SUPPORT IS PROVIDED IN ENGLISH, FRENCH AND SPANISH.

PACKAGE CONTENTS



STEP 1 Locate and mark the Studs

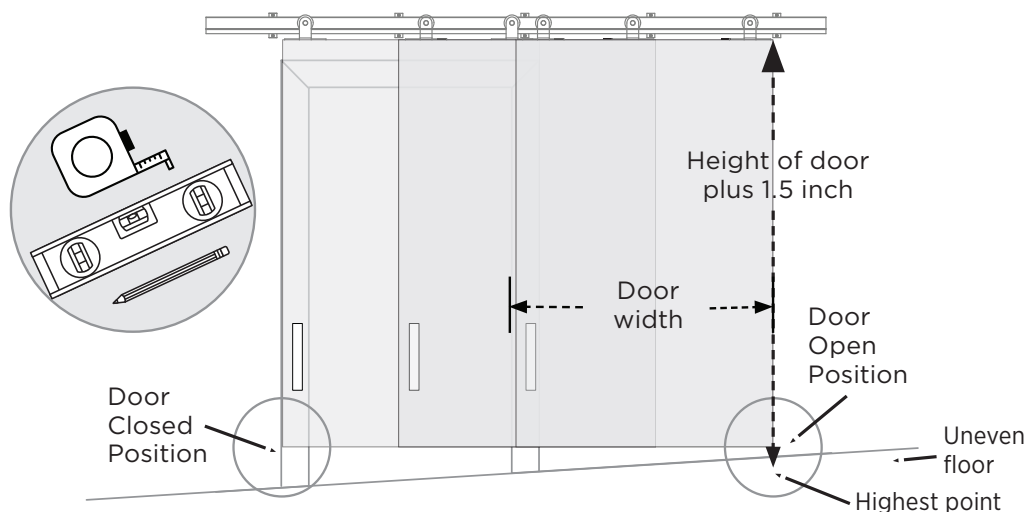
Determine which direction your door will travel, and locate the appropriate wood or metal studs in the area of installation to mount the Easy-Install Bracket. Mark these studs for future use.



NOTE:

- You must hit a minimum of 3 Studs to ensure your hardware track will support the weight of your door.
- If your opening has casings, shims are provided to level bowed wall or allow the hardware to clear the casing. (Max. 3/4" casing thickness)

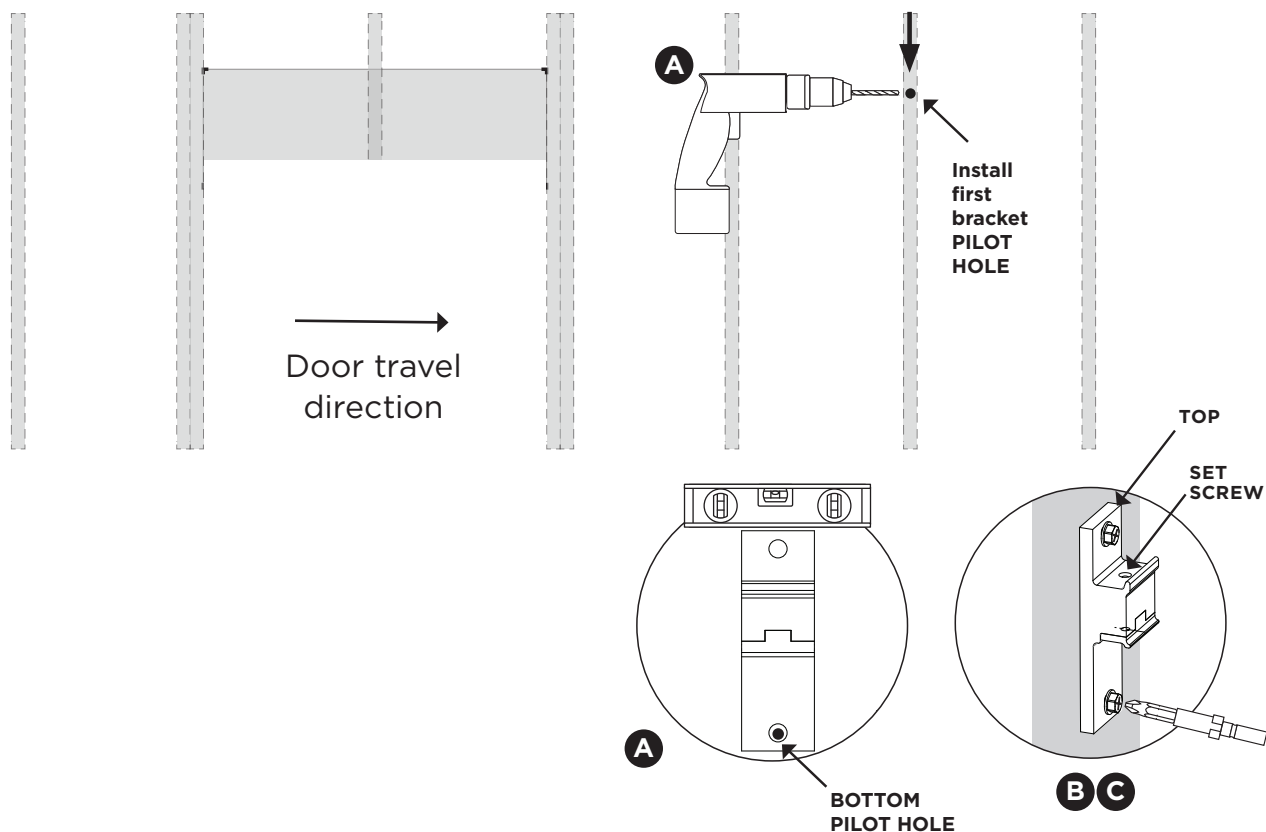
STEP 2 Check For Level Floor



- A)** Use a Level to check if your floor is uneven before making measurements.
- B)** If your floor is uneven, you need to measure at the open and closed positions of the Barn Door to ensure there is enough space. Select the highest point on the floor and measure up the height of your door +1.5". Mark the nearest stud (this should be either the furthest right or left stud in the door travel area).
- NOTE:** This will be the height of the bottom hole of all the Wall Brackets

STEP 3 First Wall Bracket installation

Start with the height mark made on your wall in Step 2B and install the first wall bracket on the right. (See Step 3B)



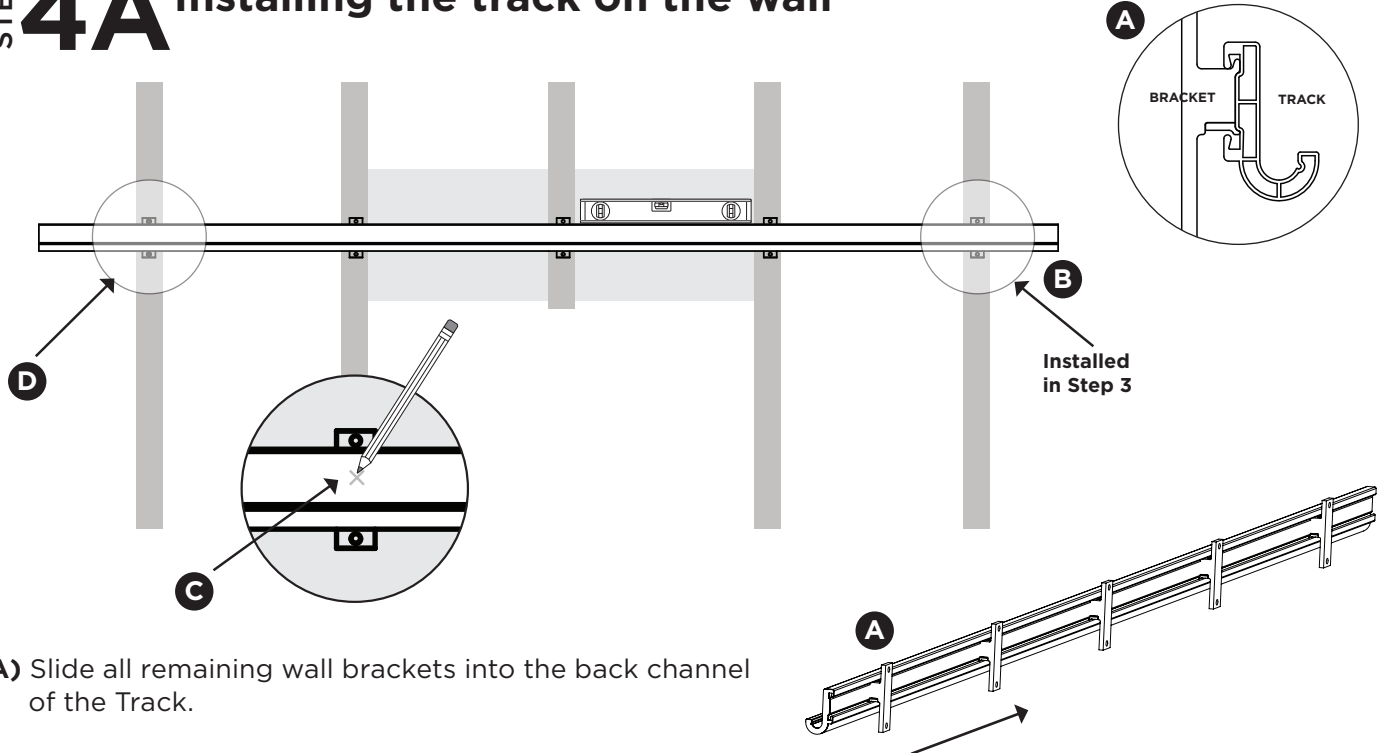
NOTE: The following instructions illustrate a door opening to the right. For opening to the left installations, reverse the brackets to match instructions.

- A)** Use a 1/8" bit to drill a pilot hole on the mark you made on the wall in Step 2B. Ensure the Bracket is level before inserting the fastening screw.
- B)** Use a Phillips head screwdriver bit to fasten the hex head screw to the bottom hole of the wall bracket.

NOTE: Be careful to apply enough pressure to ensure the Phillips screwdriver bit does not slip off the hex screw head and strip the paint. If this happens, you should be able to touch up with most paints

- C)** Use a 1/8" bit to drill a pilot hole on the top hole of the wall bracket and use a phillips screw driver bit to fasten the hex head screw to the top hole of the wall bracket.

STEP 4A Installing the track on the wall



A) Slide all remaining wall brackets into the back channel of the Track.

B) Install the Track on to the wall bracket installed in Step 3. (See Step 4B for track installation)

C) Ensuring the Track is level, mark the stud locations on the Track using a pencil.

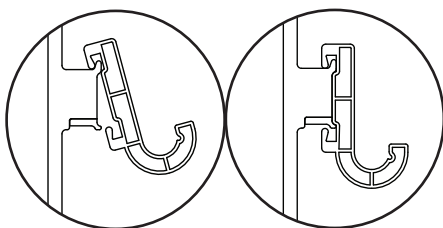
D) Install the 2nd wall bracket on the left to hold the Track in place making it easier to install the remaining wall brackets. Tighten set screw to secure the bracket to the track.

IMPORTANT: Ensure track is level before installing 2nd wall bracket.

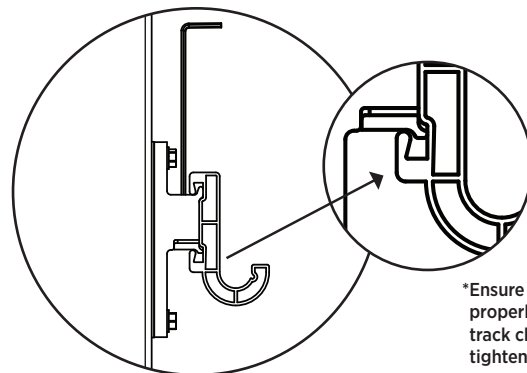
NOTE: Use a ladder and another person to help with installation.

If brackets are unable to slide on track slightly loosen the screws on the left & right wall brackets to create space between the track & the wall.

STEP 4B Track Installation



A) Angle the track to a 30-degree angle and clip the back of the track to the first wall bracket that is on the wall and snap the track down.

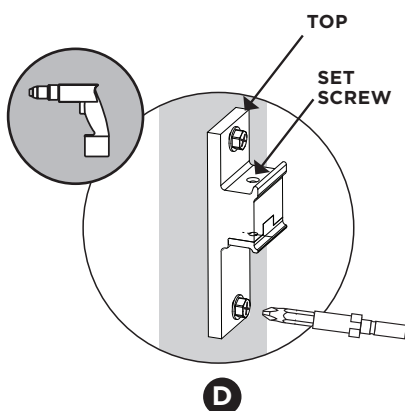


*Ensure bottom clip is properly inserted in track channel before tightening set screw.

B) Tighten the set screw at the top of the wall bracket at each end of the track using the provided Allen key that locks the wall bracket to the track. Do not overtighten. Ensuring the Track is level.

STEP 5 Installing remaining Wall Brackets

- A) Slide each remaining wall bracket over the marked stud locations on the track. Brackets should be centered on the stud.
- B) Before fastening remaining wall brackets, verify for a bowed wall. If wall is bowed add shims provided behind the wall brackets to prevent the track from bowing. (See Shim Installation section)
- C) Use a 1/8" bit to drill a pilot hole on the top and bottom hole of the wall brackets.

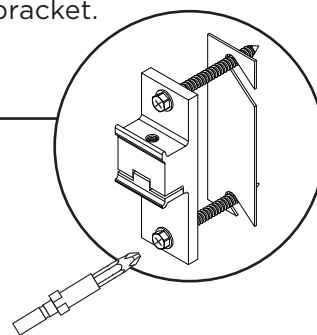


- D) Use a Phillips head screwdriver bit to fasten the hex head screw to the top and bottom hole of the wall bracket.

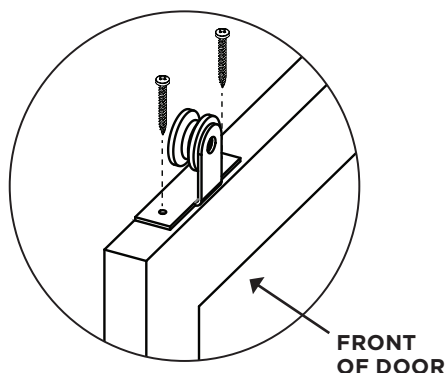
IMPORTANT: Once wall brackets are installed tighten set screws to secure bracket to the track. (See Step 4B)

SHIM INSTALLATION:

Check for bowed wall. If there is any bowing that causes gaps between the back side of the wall brackets and the wall, please make note of these locations, and use the provided Shims as necessary. Multiple shims can be used on 1 bracket.



STEP 6 Install Hangers

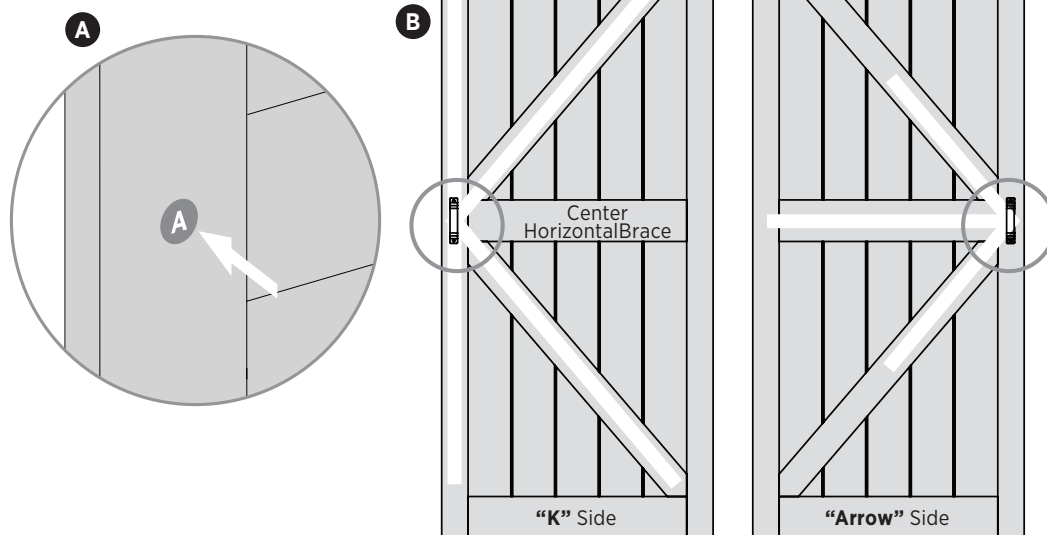


- A) Locate the pre-drilled holes at the top of the door. Using the Philips Head Drill Bit, fasten in the countersunk screws into the holes of the Top Mount rollers.
- B) Repeat on the other end of the door with the second roller.

STEP 7A If You Have A Hollow Core door

If your Barn Door is **NOT** a Hollow Core door move to next **Step (7B)**

Hollow Core Handle Positions

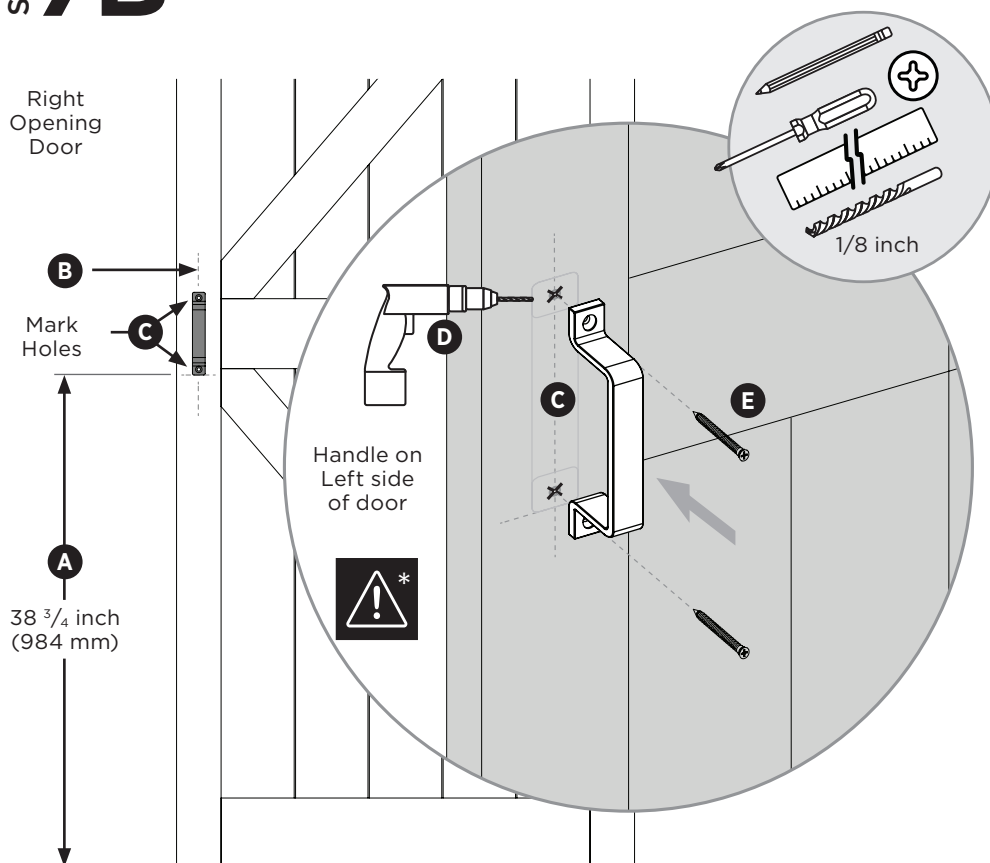


Note: Due to the construction of a Hollow Core door, the handle can only go in one place on either side.

- A)** Look for the **(A)** sticker for location.
- B)** Depending on the door opening, front of door will either look like a **"K"** or an **"Arrow"**
- C)** Once you establish the location of the door handle on your Hollow Core barn door, move to **Step 7B.**

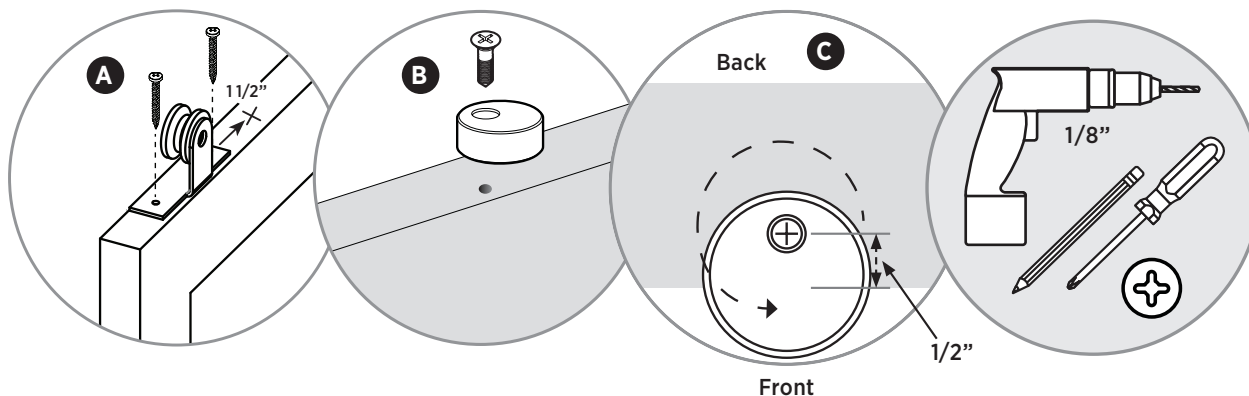
STEP 7B Install The Handle on the door

Note: These instructions will focus on a right opening door with handle on the Left side of door.



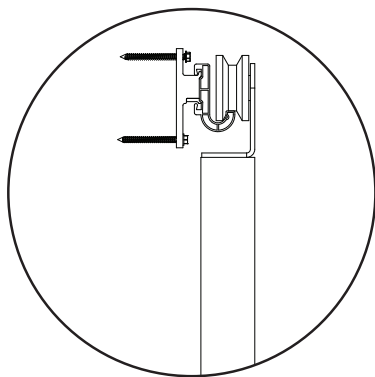
- A)** Measure up from the bottom of the door to the bottom of the handle 38 3/4 inch (984mm) and draw a light horizontal line.
- B)** Determine the center of the door frame and draw a light 6 inch (152mm) vertical line up from the line drawn in **Step A.**
- C)** Line up bottom of handle to horizontal line and line up the holes with center vertical line and mark each hole with a pencil.
- D)** Drill a 1 inch deep pilot hole using the 1/8 inch Drill Bit. **(Do not drill through door).**
- E)** Using a #2 Phillips Screwdriver, tighten and secure the Handle in place.

STEP 8A Installing the Anti-Jump Blocks on the door

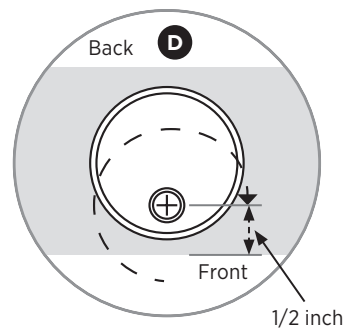


- A)** Measure from the end of the hanger 1 1/2" and drill a 1/8" pilot hold from the front edge of the door.
- B)** Loosely secure the Anti-Jump Blocks with a #2 Phillips screwdriver.
- C)** Rotate the blocks outwards to allow the door to be mounted onto the track.

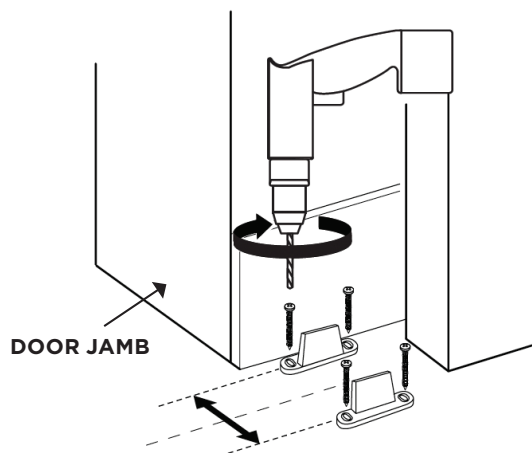
STEP 8B Place door on Track



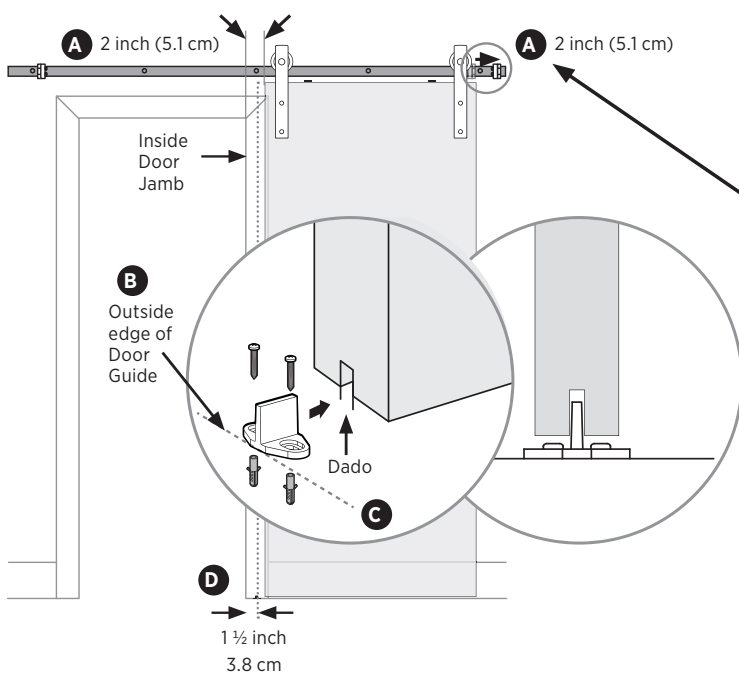
- A)** Lift the door so the curved portion of the J-Track is between the roller and the top of the door.
- B)** Position the door so that the grooved portion of the wheel is sitting on the J.
- C)** Lower the door onto the track and gently return it to its vertical hanging position.
- D)** Rotate the Anti-Jump Block inwards to lock the door on the track.
- E)** Tighten screw on Anti-jump block to secure in place.



STEP 9 Installing the Floor Guides



- A)** Slide the door over 2 inches (5.1 cm) past the door jamb to prepare for the Floor Guide.
- B)** Position the outside edge of the Floor Guide 1 1/2 inch (3.8cm) from the jamb, adjacent to the dado slot and mark the location of the guide on the floor.
- C)** If required, pilot hole drill 1/4 inch for the floor anchors or secure directly into the floor.



Note: A door guide helps to keep your door stable and limits swinging. The following instructions provided are for the recommended floor door guide. If you prefer to install a wall door guide see below for optional instructions.

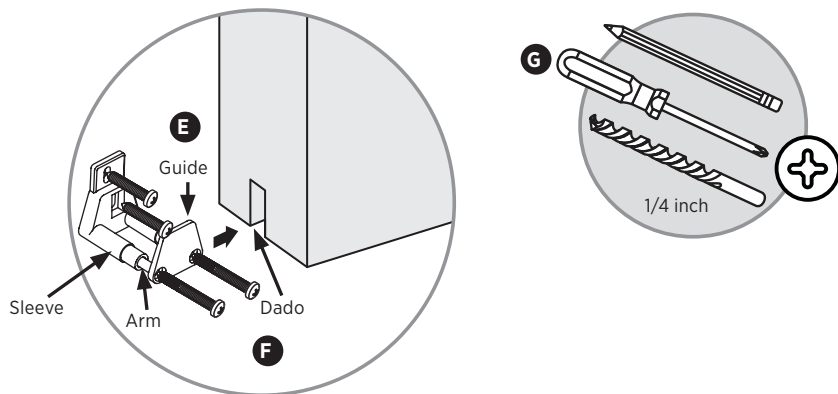
FLOOR DOOR GUIDE (Recommended)

- A)** Slide the door over 2 inches (5.1 cm) past the door jamb in order to prepare for the Floor Guide. Loosen the Right End Stop and move it over 2 inches in order to move door.
- B)** Position the outside edge of the Floor Guide 1 1/2 inch (3.8 cm) from the jamb, adjacent to the dado slot and mark the location of the guide on the floor.
- C)** If required, pilot hole drill 1/4 inch for the floor anchors or secure directly into the floor.

WALL DOOR GUIDE

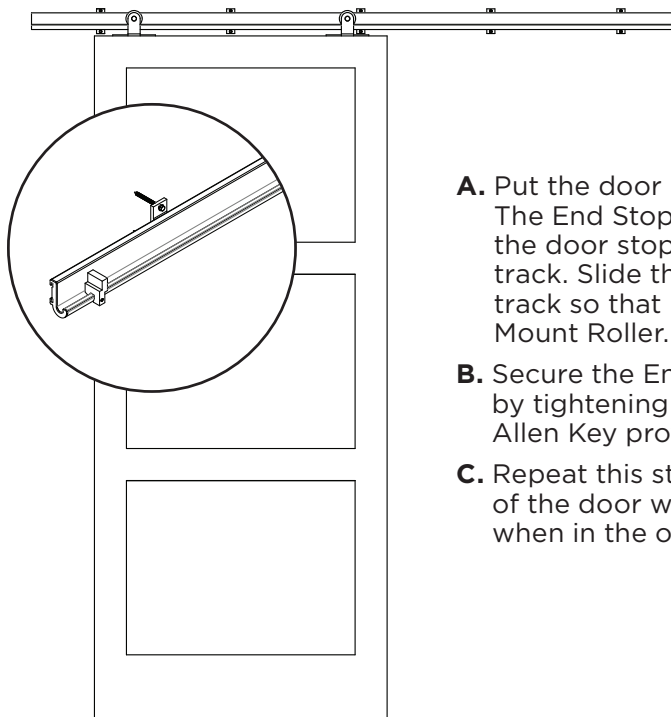
- D)** With the screws provided secure the guide 1 1/2 inch (3.8 cm) from the door jamb directly into the baseboard or wall.
- E)** Line up the guide with Dado location by pushing Guide arm in or out until you have the Guide lined up with Dado.
- F)** Pre-insert the screws on the Wall Door Guide Arm by hand.
- G)** Tighten the pre-inserted screws with a #2 Phillips Screwdriver.

Installing the Wall Door Guide (Optional)

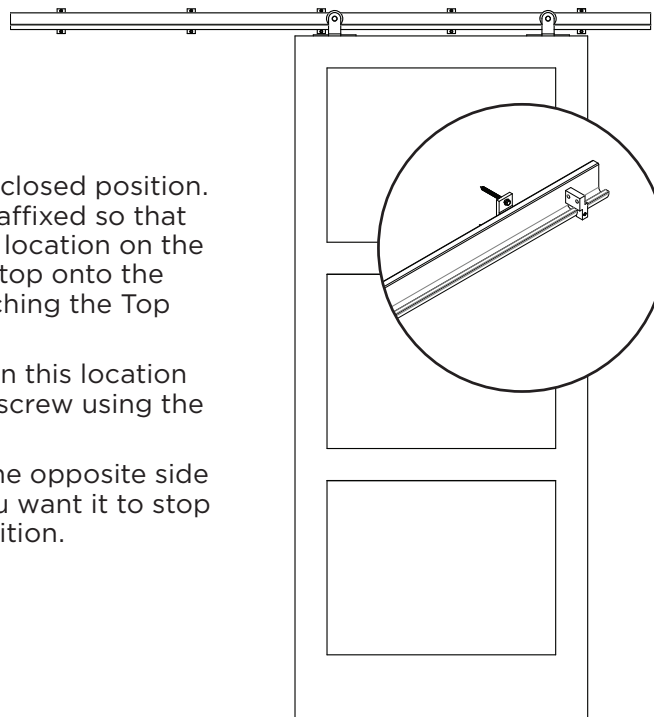


STEP 10 Secure the End Stops

Left End Stop



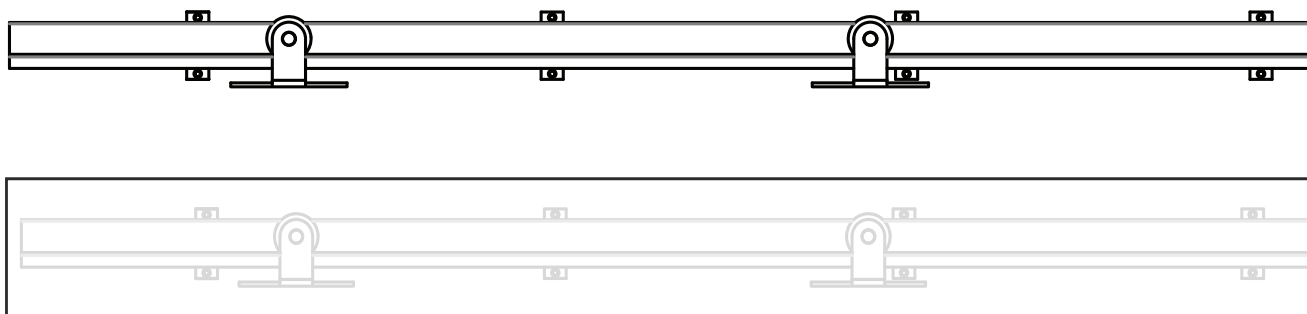
Right End Stop



- A.** Put the door into the closed position. The End Stop will be affixed so that the door stops in this location on the track. Slide the End Stop onto the track so that it is touching the Top Mount Roller.
- B.** Secure the End Stop in this location by tightening the set screw using the Allen Key provided.
- C.** Repeat this step on the opposite side of the door where you want it to stop when in the open position.

NOTE:

OPTIONAL FASCIA AVAILABLE FOR PURCHASE TO CONCEAL EXPOSED HARDWARE



BDF600-07812

5 YEAR LIMITED WARRANTY

Products warrantied against manufacturing defects for up to five years from the purchase date.
The warranty applies only to the original purchaser of the product.

If a product is determined to be defective due to a manufacturing defect, a replacement product will be supplied. The scope of the warranty is limited to replacing the product and does not include labor required to install, repair or deliver, or any costs related to removing the existing product.

This warranty is void in the event that the product is damaged in transit, or if damage or failure is caused by abuse, misuse, storage of products in an improper environment, abnormal usage, faulty installation, failure to follow installation instructions, damage in an accident, improper maintenance, or any repair.

We reserve the right to inspect any claim prior to issuing credit.