

1.0 Reference and Address			
Report Number	230200495CXI-001	Original Issued: 6-Mar-2023	Revised: 8-Feb-2025
Standard(s)	Electric Fans [UL 507:2017 Ed.10+R:22Aug2024]		
Applicant	Ningbo Sekostar International Trading Co Ltd	Manufacturer	Ningbo Paniya Electrical Technology Co.,Ltd.
Address	Room 22-2, Jinshuai Building, Baishalu Street, Cixi, Zhejiang	Address	Fuhai Industrial Zone, Cixi, Ningbo, 315300
Country	P. R. China	Country	P. R. China
Contact	Mr. Payne Cheng	Contact	Mr. Payne Cheng
Phone	86-15990218214	Phone	86-15990218214
FAX	NA	FAX	NA
Email	payne@sekostar.cn	Email	payne@sekostar.cn

2.0 Product Description	
Product	Tower Fan
Brand name	Antarctic Star, R.W.FLAME, XBEAUTY, Kismile, AGLUCKY, NINGDA, Electactic, ZAFRO, COWSAR, KISSAIR, WAA
Description	The product covered by this report is Tower Fan intended for household and indoor use only. It is provided with a permanently attached flexible power supply cord terminated in a molded-on polarized plug.
Models	NDTFT14RH, NDTFT14RL, NDTFT4EH, NDTFT4EM, NDTFT4EL, NDTFT21R, NDTFT21RH, NDTFT21RB, NDTFT21RBH, NDTFT23R, NDTFT23RH, 5314, 5312, 5348, 5304, 5375, 5321, 5314H, 5312H, 5321H, 5323
Model Similarity	<p>All models are controlled by electronic circuit.</p> <p>NDTFT14RH, NDTFT14RL, NDTFT21R, NDTFT21RH, NDTFT21RB and NDTFT21RBH use same fan motor; NDTFT14RH and NDTFT14RL have two optional PCB.</p> <p>NDTFT14RL is same as NDTFT14RH except NDTFT14RL is shorter than NDTFT14RH.</p> <p>NDTFT21R is same as NDTFT21RH except NDTFT21R is shorter than NDTFT21RH.</p> <p>NDTFT23RH is same as NDTFT23R except NDTFT23R is shorter than NDTFT23RH.</p> <p>NDTFT21RB is same as NDTFT21RBH except NDTFT21RB is shorter than NDTFT21RBH.</p> <p>NDTFT21R is same as NDTFT21RB except the PCB. NDTFT21RH is same as NDTFT21RBH except the PCB.</p> <p>NDTFT23R and NDTFT21R have similar construction. And for all models, control panel of NDTFT23R is on front is on the front of the appliance, but control panel of other models is on the top of the appliance.</p> <p>NDTFT4EH, NDTFT4EM and NDTFT4EL use same fan motor; NDTFT4EH, NDTFT4EM, NDTFT4EL have two optional PCB.</p> <p>NDTFT4EH is similar as NDTFT4EM except NDTFT4EH can adjust the height of appliance.</p> <p>NDTFT4EL is similar as NDTFT4EM except NDTFT4EL is shorter than NDTFT4EM.</p> <p>NDTFT14RH, 5314 and 5314H are the same except the model name. NDTFT14RL, 5312H and 5312 are the same except the model name. NDTFT4EH and 5348 are the same except the model name. NDTFT4EM and 5304 are the same except the model name. NDTFT4EL and 5375 are the same except the model name. NDTFT21RB, 5321H and 5321 are the same except the model name. NDTFT23R and 5323 are the same except the model name.</p>
Ratings	120V~, 60Hz, 50W
Other Ratings	NA

3.0 Product Photographs

Photo 1 - Overall view for NDTFT14RH

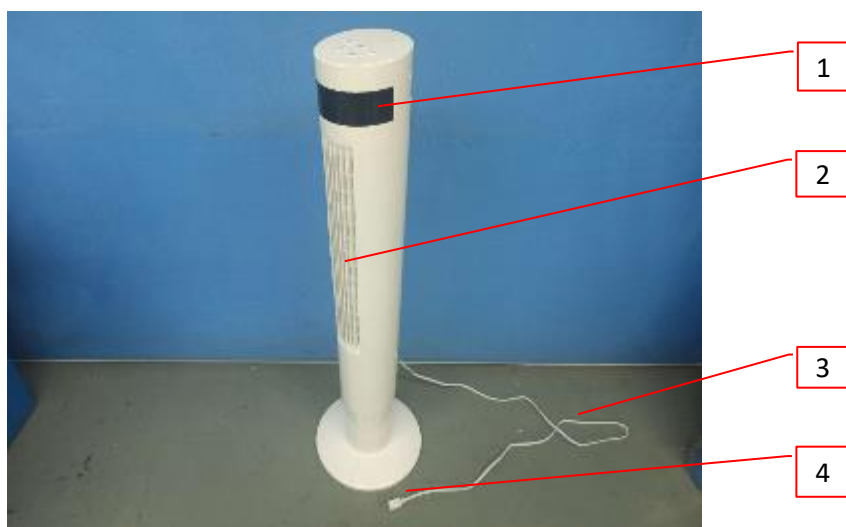


Photo 2 - Overall view for NDTFT14RH



Photo 3- Top view for NDTFT14RH, NDTFT14RL



3.0 Product Photographs

Photo 4- bottom view for NDTFT14RH

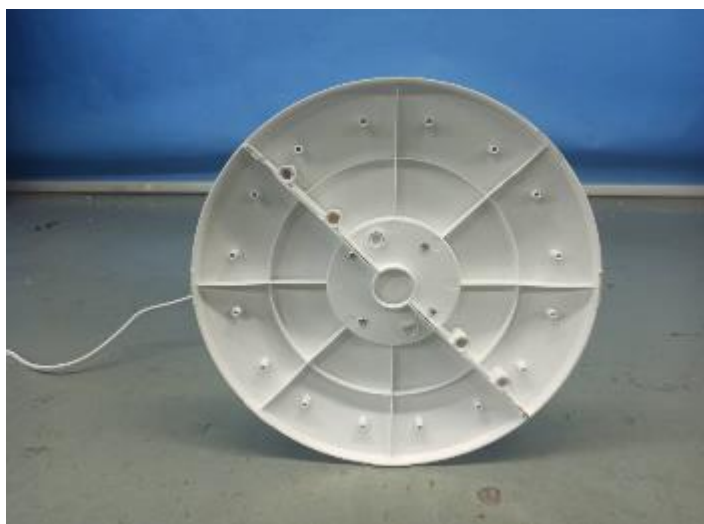


Photo 5- Internal view for NDTFT14RH (Optional PCB 2 for NDTFT14RH, NDTFT14RL)

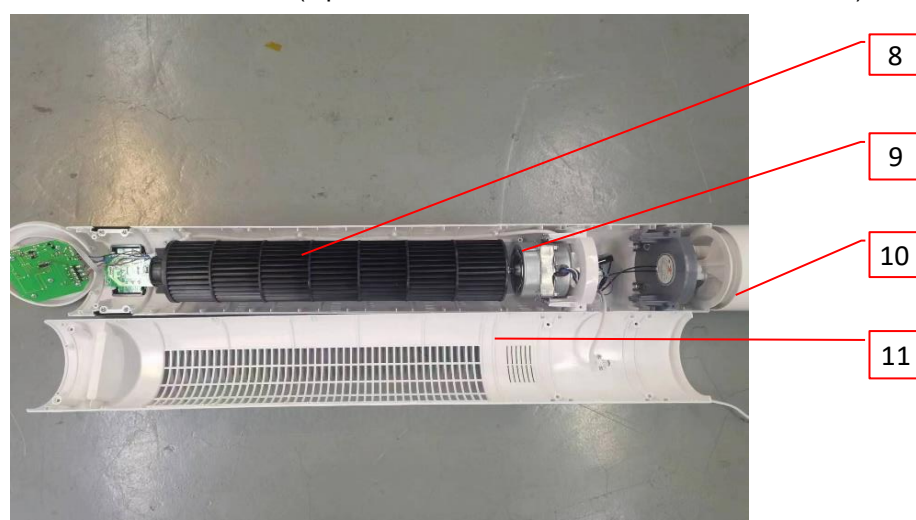
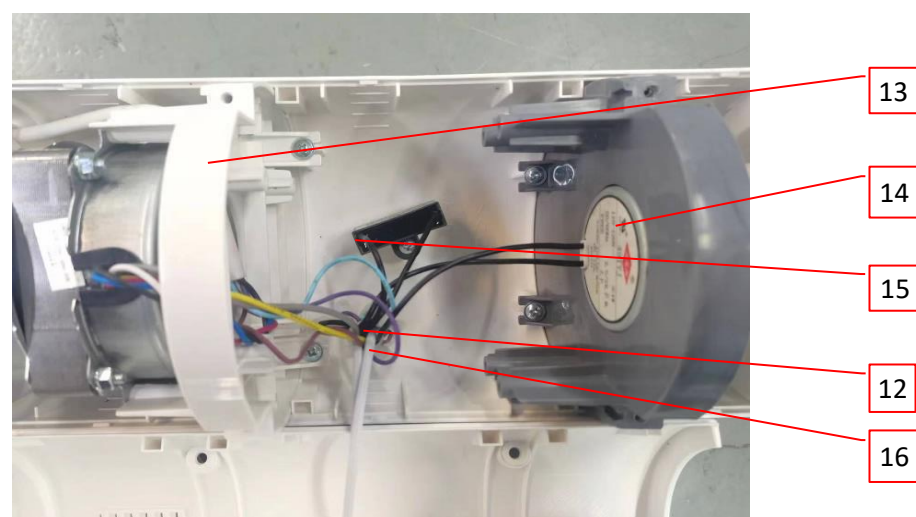


Photo 6- Internal view for NDTFT14RH



3.0 Product Photographs

Photo 7- Internal view for NDTFT14RH (Optional PCB 1 for NDTFT14RH, NDTFT14RL)

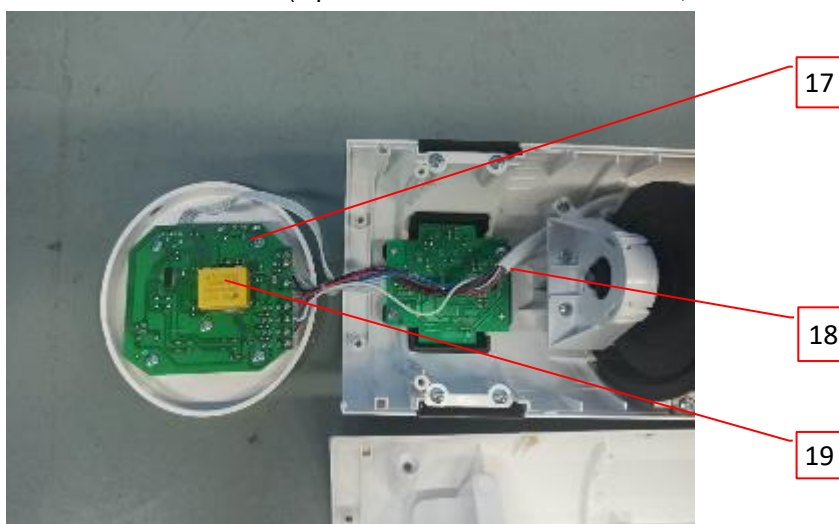


Photo 8- Display PCB view for NDTFT14RH (Optional PCB 1 for NDTFT14RH, NDTFT14RL)

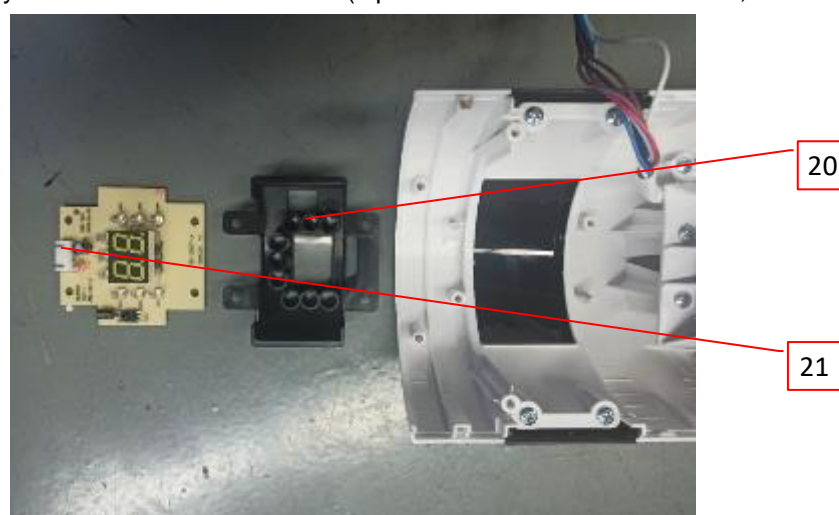
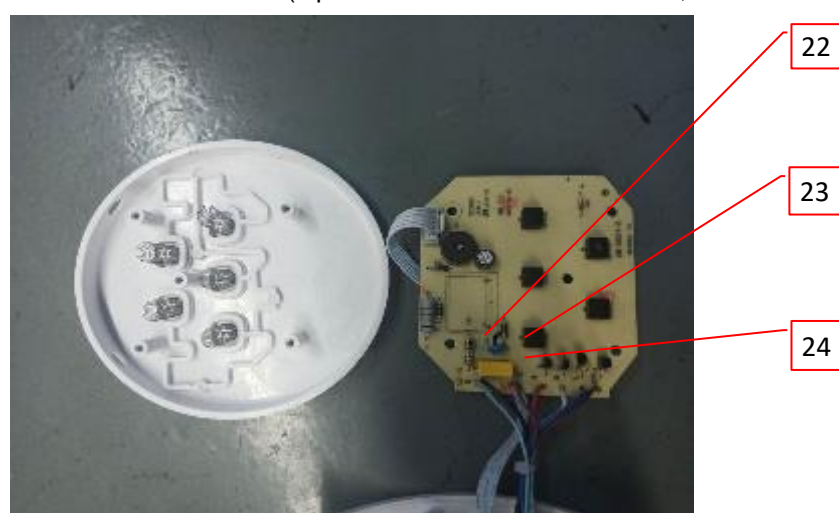


Photo 9- Internal view for NDTFT14RH (Optional PCB 1 for NDTFT14RH, NDTFT14RL)



3.0 Product Photographs

Photo 10 - Optional PCB 2 for NDTFT14RH, NDTFT14RL

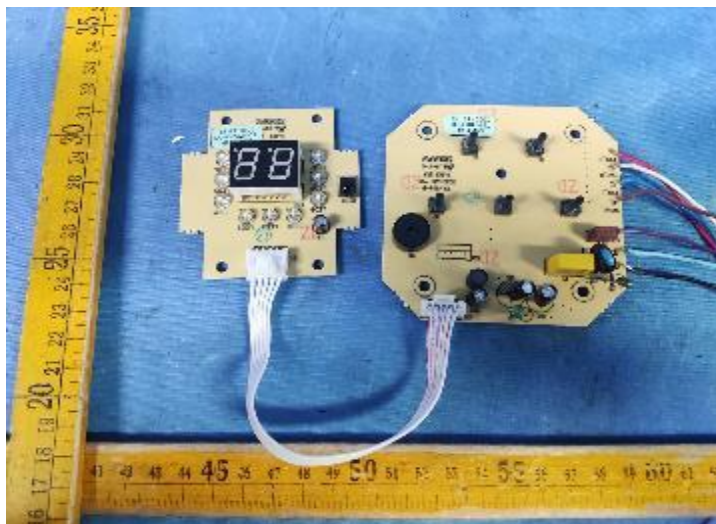


Photo 11 - Optional PCB 2 for NDTFT14RH, NDTFT14RL

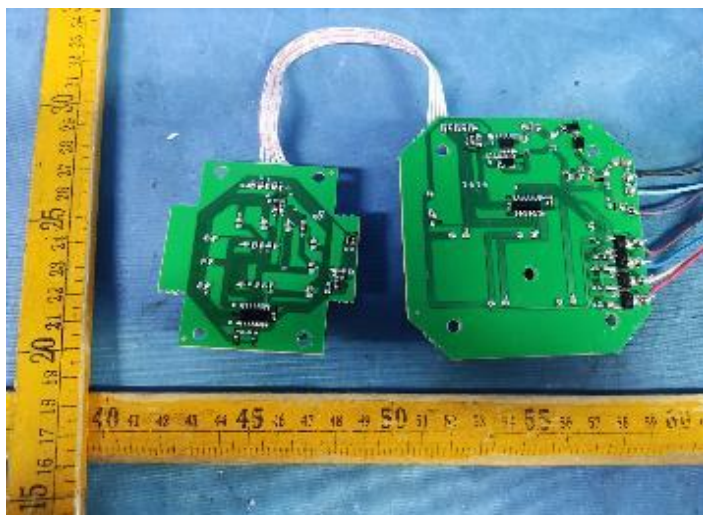


Photo 12 - Overall view for NDTFT14RL



3.0 Product Photographs

Photo 13- Overall view for NDTFT4EH



Photo 14 - Overall view for NDTFT4EH



Photo 15 - Top view for NDTFT4EH, NDTFT4EM



25

3.0 Product Photographs

Photo 16 - bottom view for NDTFT4EH

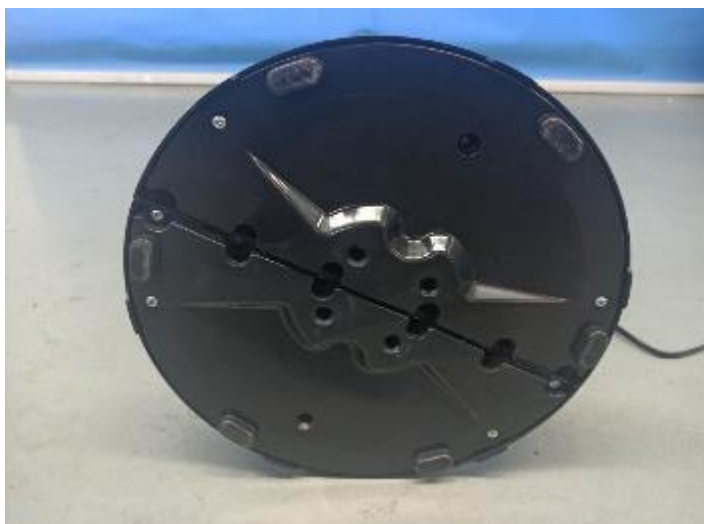
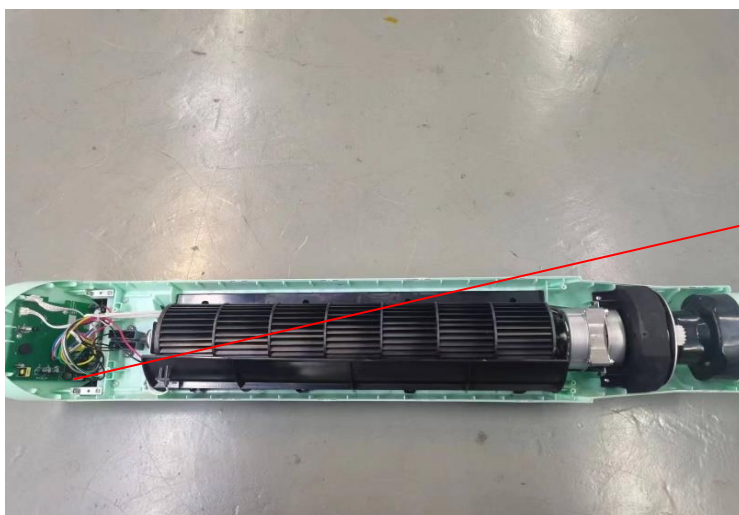


Photo 17 - Internal view for NDTFT4EH



Photo 18 - Internal view for NDTFT4EH (Optional PCB 2 for NDTFT4EH, NDTFT4EM, NDTFT4EL)



3.0 Product Photographs

Photo 19 - Internal view for NDTFT4EH

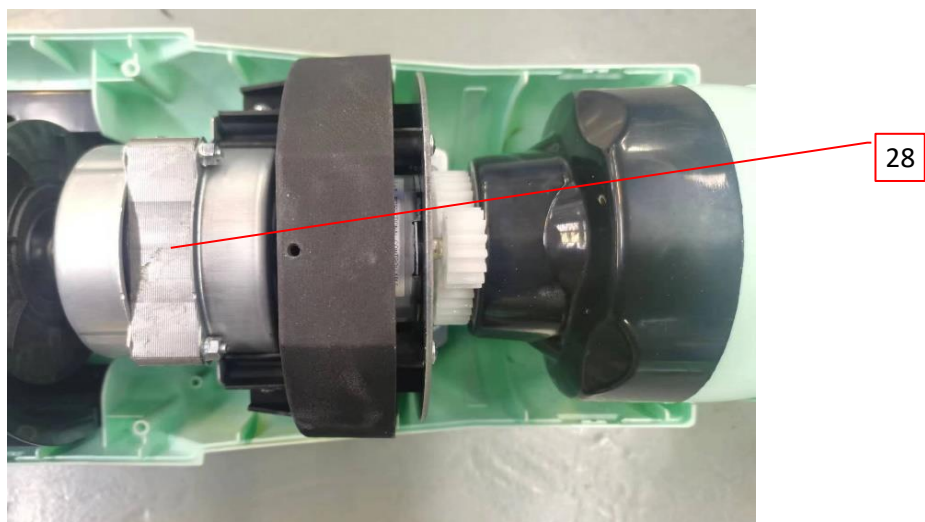


Photo 20 - Internal view for NDTFT4EH

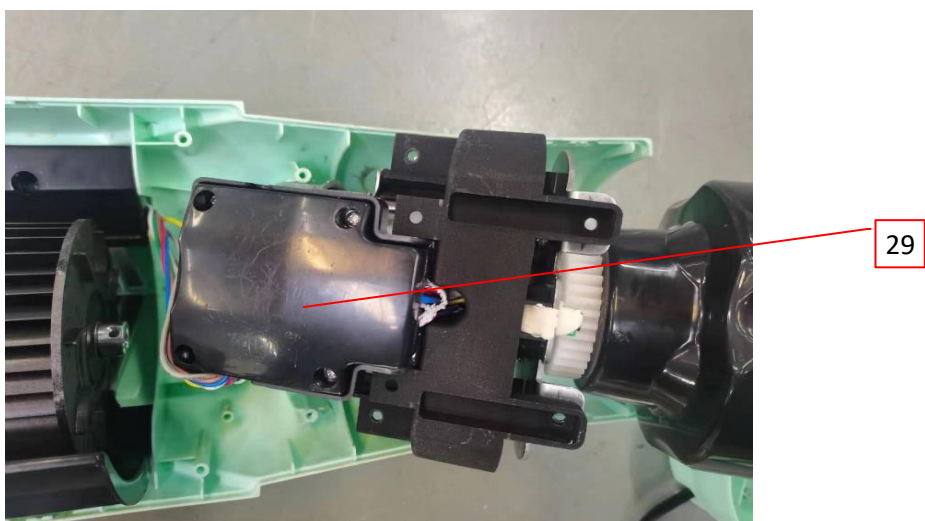
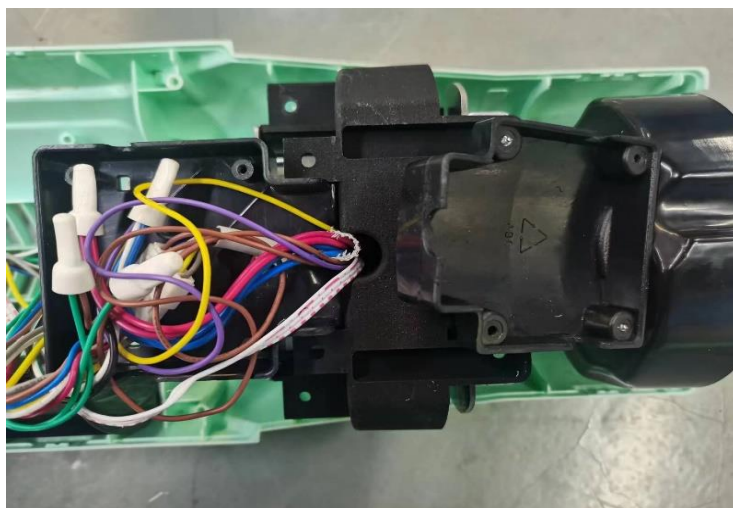


Photo 21 - Internal view for NDTFT4EH



3.0 Product Photographs

Photo 22 - Internal view for NDTFT4EH



Photo 23- Internal view for NDTFT4EH

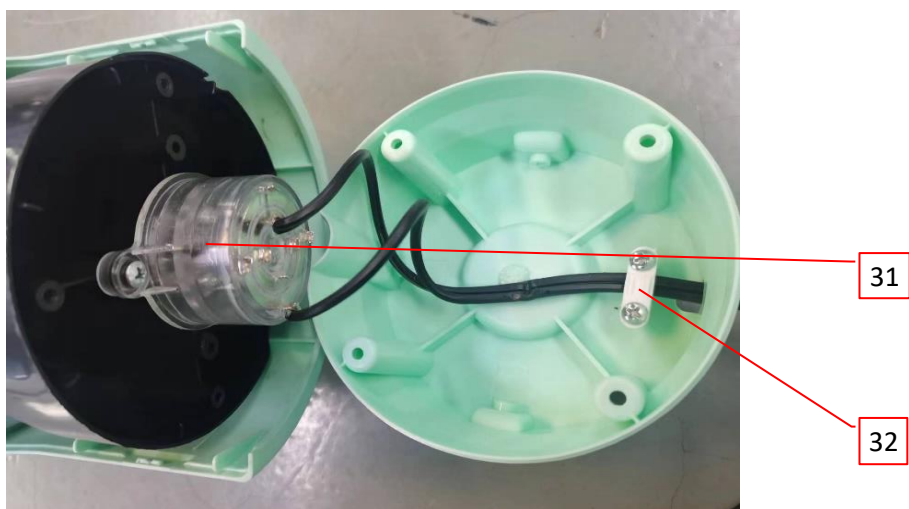
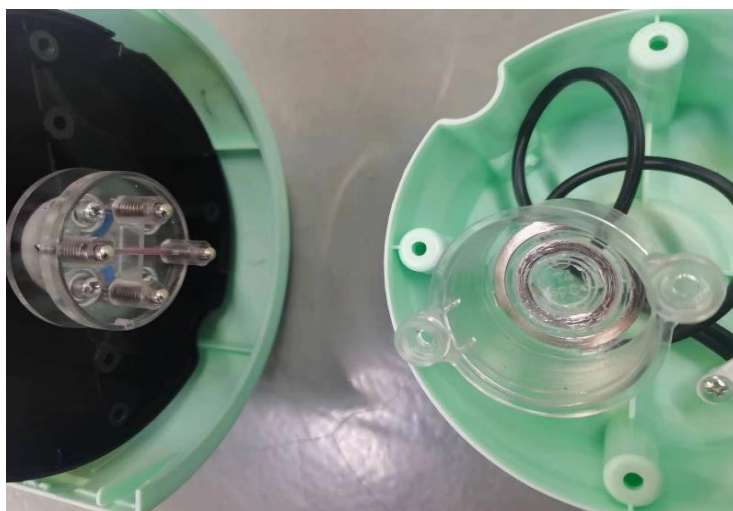


Photo 24 - Internal view for NDTFT4EH



3.0 Product Photographs

Photo 25 - Internal view for NDTFT4EH (Optional PCB 1 for NDTFT4EH, NDTFT4EM, NDTFT4EL)

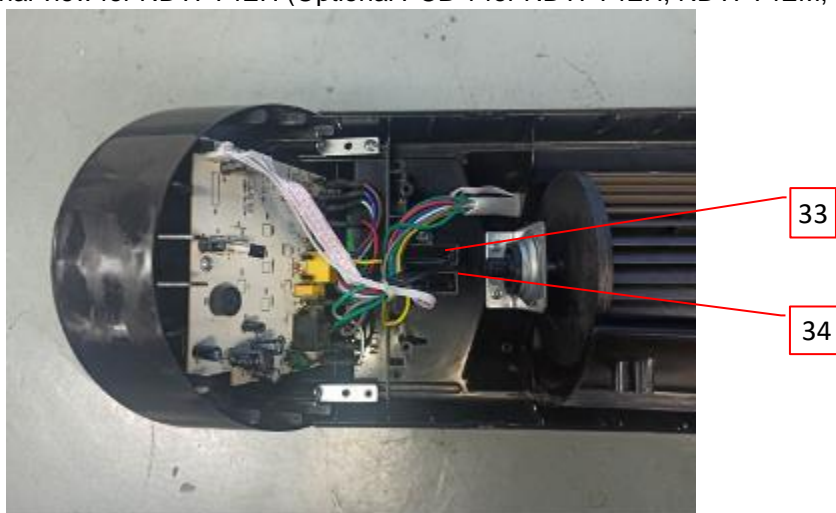


Photo 26 - Internal view for NDTFT4EH (Optional PCB 1 for NDTFT4EH, NDTFT4EM, NDTFT4EL)

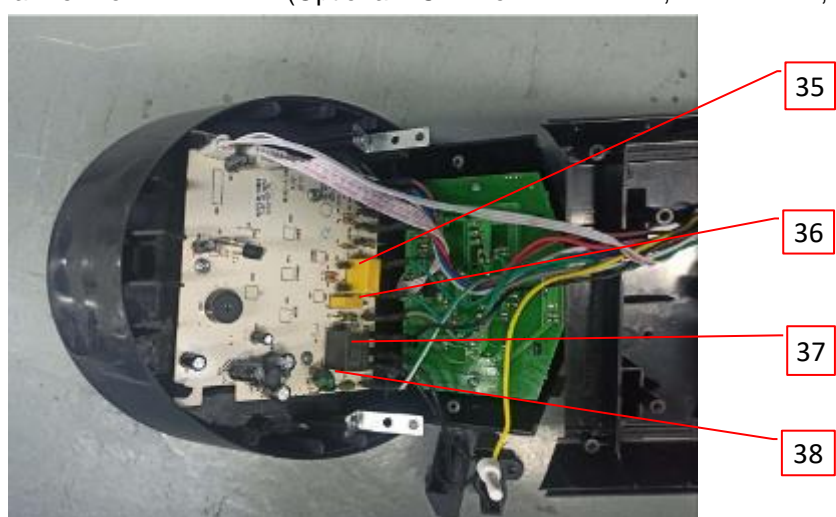
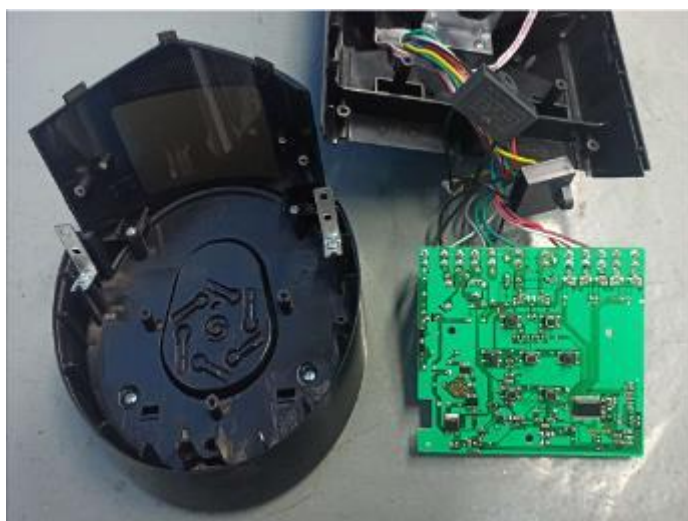


Photo 27 - Internal view for NDTFT4EH (Optional PCB 1 for NDTFT4EH, NDTFT4EM, NDTFT4EL)



3.0 Product Photographs

Photo 28 - Display PCB view for NDTFT4EH, NDTFT4EM



Photo 29 - Optional PCB 2 for NDTFT4EH, NDTFT4EM, NDTFT4EL



Photo 30 - Optional PCB 2 for NDTFT4EH, NDTFT4EM, NDTFT4EL



3.0 Product Photographs

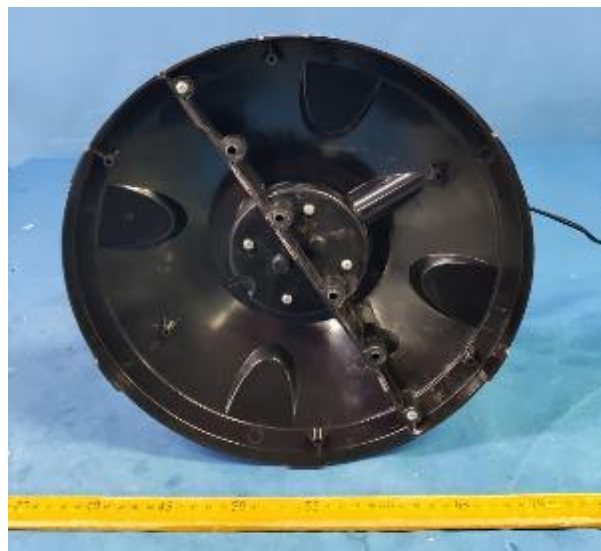
Photo 31 - Overall view for NDTFT4EM



Photo 32- Overall view for NDTFT4EL



Photo 33 - bottom view for NDTFT4EM, NDTFT4EL



3.0 Product Photographs

Photo 34 - Optional bottom view for NDTFT14RH, NDTFT14RL

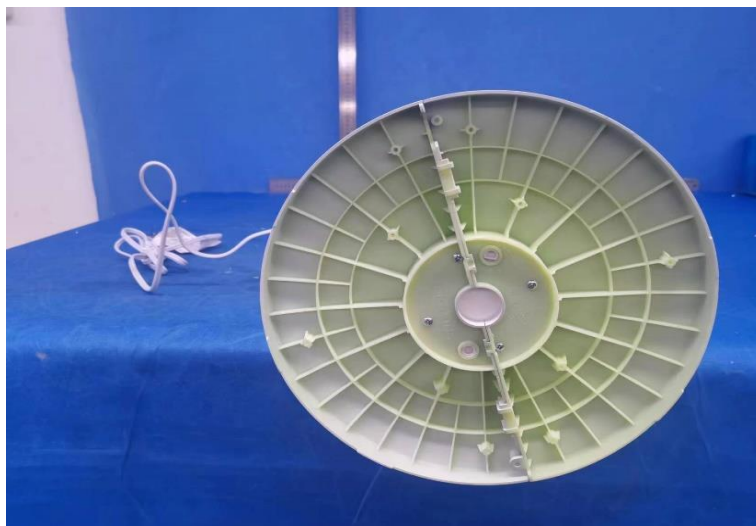


Photo 35 - Optional bottom view for NDTFT4EM, NDTFT4EL

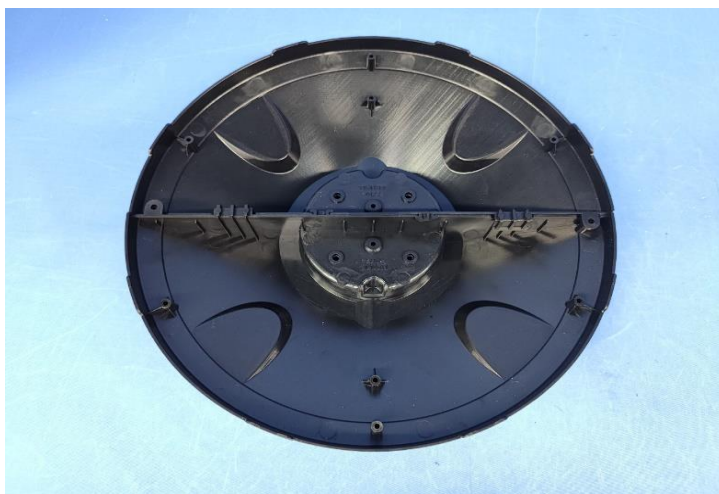


Photo 36 - Optional bottom view for NDTFT14RH, NDTFT14RL, NDTFT21R, NDTFT21RH, NDTFT21RB, NDTFT21RBH



3.0 Product Photographs

Photo 37 - Optional bottom view for NDTFT14RH, NDTFT14RL, NDTFT21R, NDTFT21RH, NDTFT21RB, NDTFT21RBH

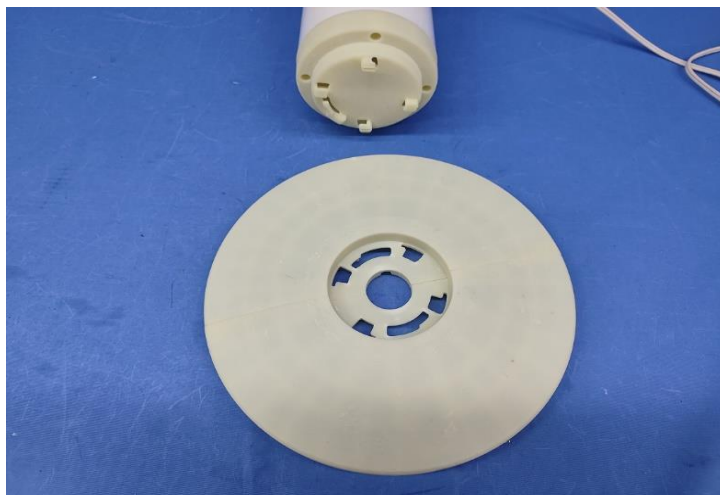


Photo 38 - Overall view for NDTFT21R and NDTFT21RB



Photo 39 - Overall view for NDTFT21R and NDTFT21RB



3.0 Product Photographs

Photo 40 - Top view for NDTFT21R and TFT21RH



Photo 41 - Bottom view for NDTFT21R, NDTFT21RH, NDTFT21RB and NDTFT21RBH



Photo 42 - Internal view for NDTFT21R



3.0 Product Photographs

Photo 43 - Internal view for NDTFT21R and NDTFT21RB

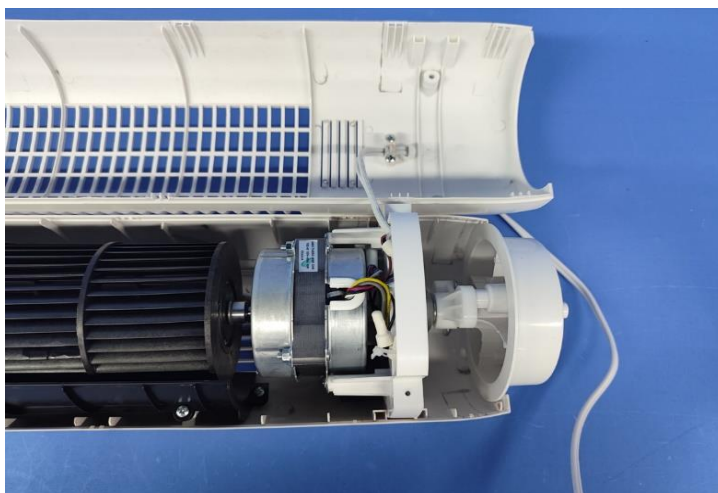
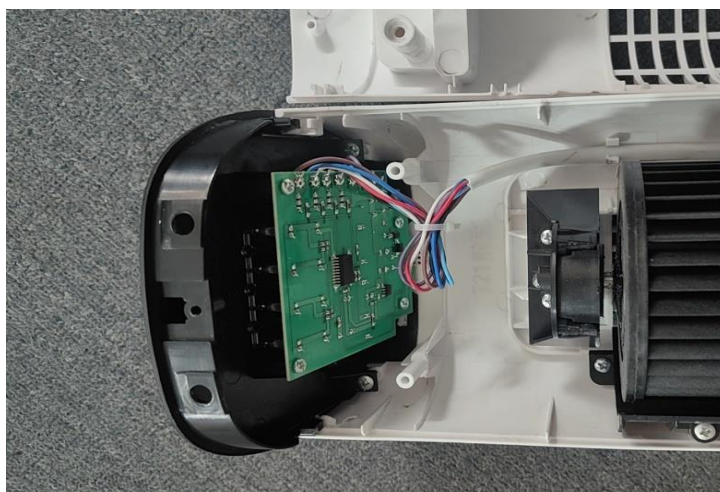


Photo 44 - Internal view for NDTFT21R, NDTFT21RH, NDTFT21RB and NDTFT21RBH



Photo 45 - Internal view for NDTFT21R and NDTFT21RH



3.0 Product Photographs

Photo 46 - PCB view for NDTFT21R and NDTFT21RH

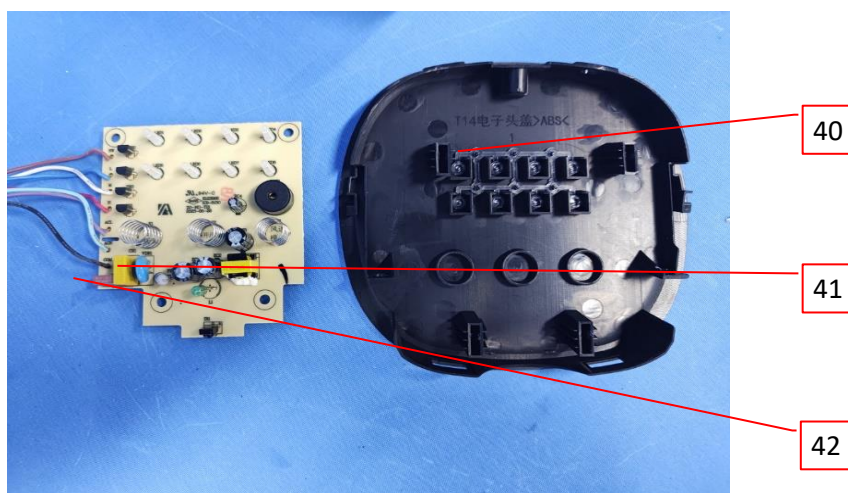


Photo 47 - PCB view for NDTFT21R and NDTFT21RH

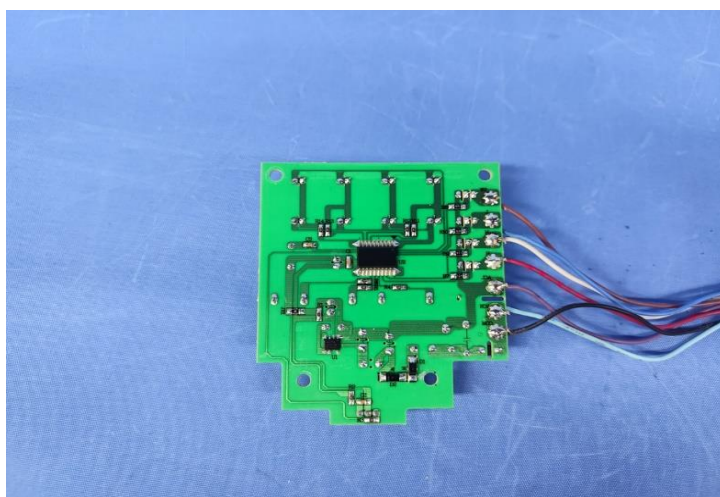


Photo 48 - Top view for NDTFT21RB and NDTFT21RBH



3.0 Product Photographs

Photo 49 - Internal view for NDTFT21RB



Photo 50 - Internal view for NDTFT21RB and NDTFT21RBH

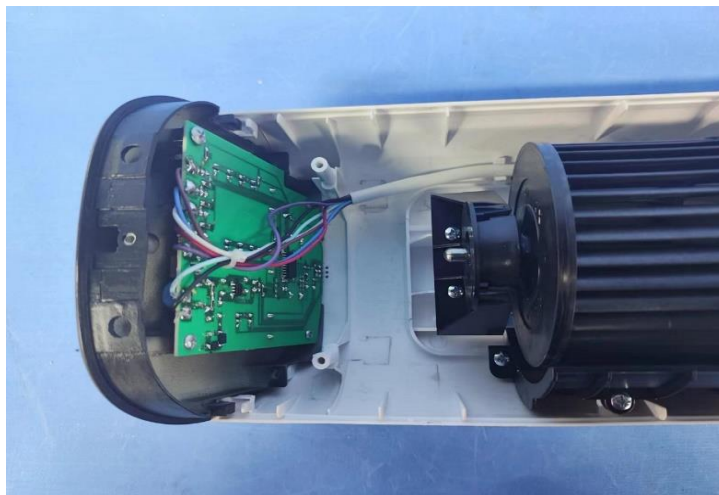
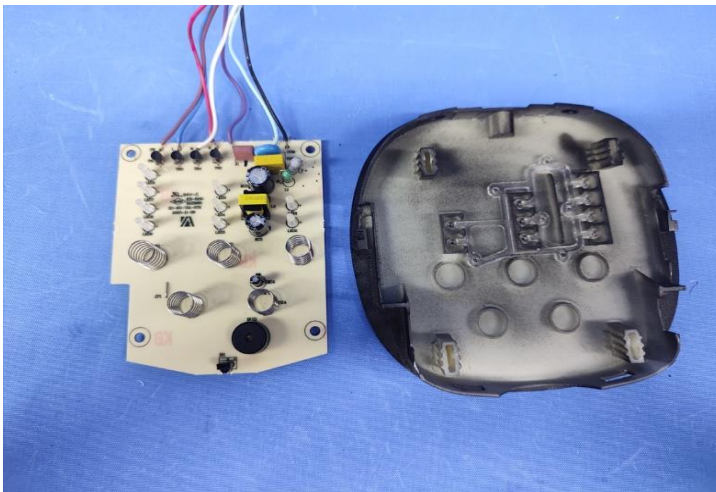


Photo 51 - PCB view for NDTFT21RB and NDTFT21RBH



3.0 Product Photographs

Photo 52 - PCB view for NDTFT21RB and NDTFT21RBH

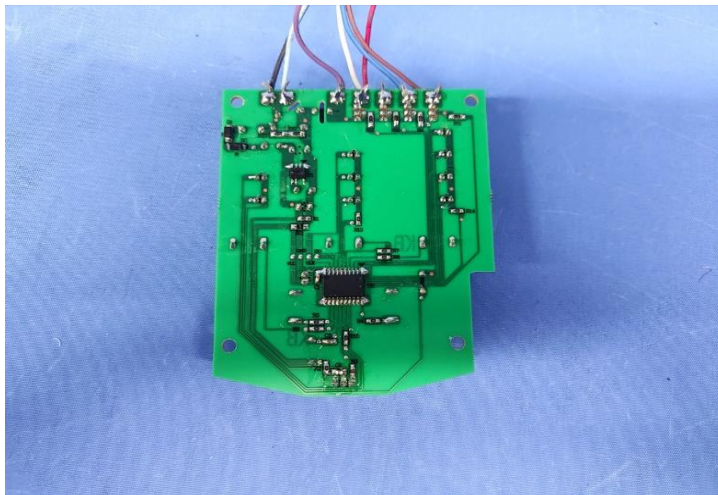


Photo 53 - Overall view for NDTFT21RH and NDTFT21RBH



Photo 54 - Overall view for NDTFT21RH and NDTFT21RBH



3.0 Product Photographs

Photo 55 - Internal view for NDTFT21RH

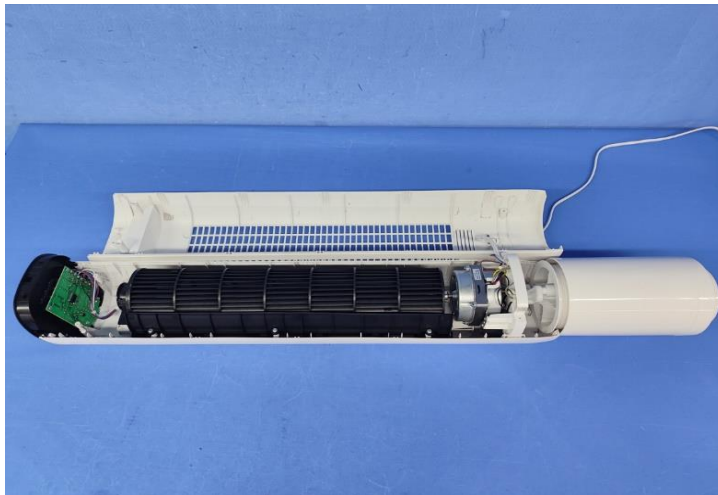


Photo 56 - Internal view for NDTFT21RH and NDTFT21RBH

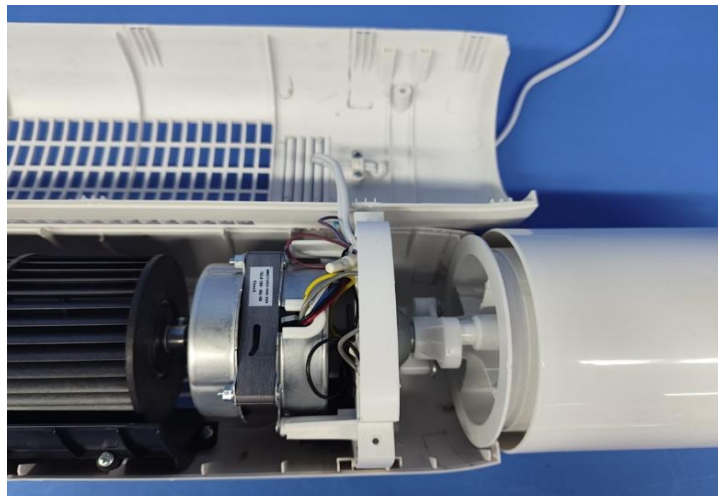
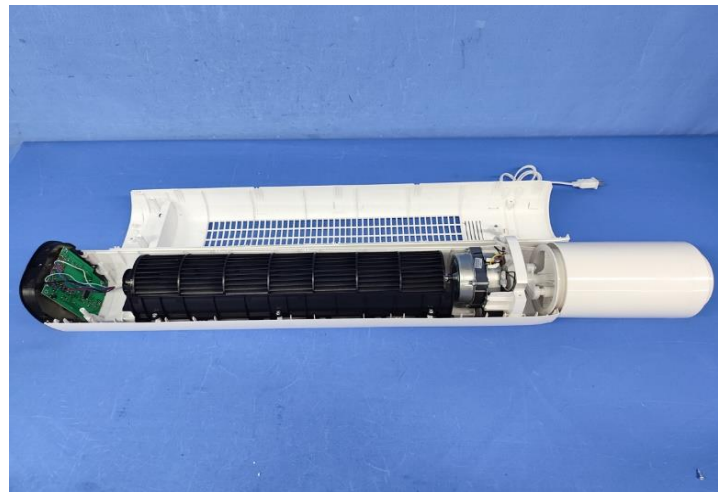


Photo 57 - Internal view for NDTFT21RBH



3.0 Product Photographs

Photo 58 - Overall view for NDTFT23R



Photo 59 - Overall view for NDTFT23R



Photo 60 - Overall view for NDTFT23R



3.0 Product Photographs

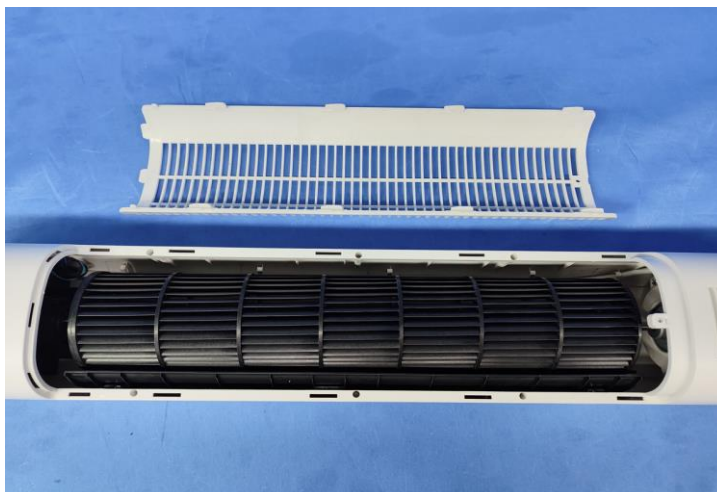
Photo 61 - Overall view for NDTFT23R



Photo 62 - Bottom view for NDTFT23R and NDTFT23RH



Photo 63 - Internal view for NDTFT23R and NDTFT23RH



3.0 Product Photographs

Photo 64 - Internal view for NDTFT23R

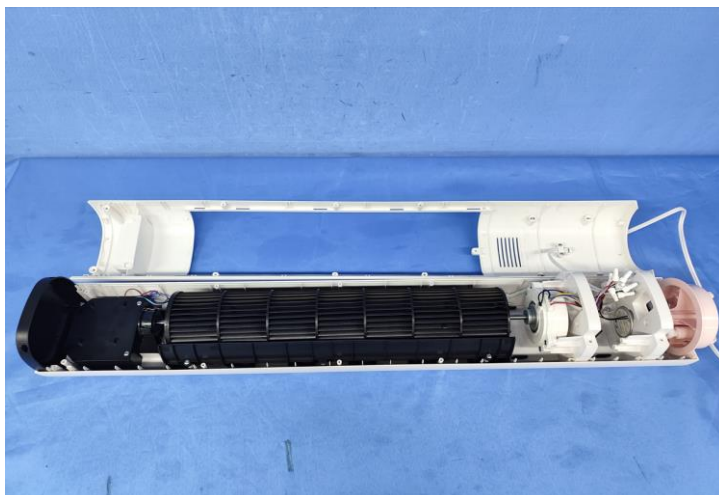


Photo 65 - Internal view for NDTFT23R and NDTFT23RH

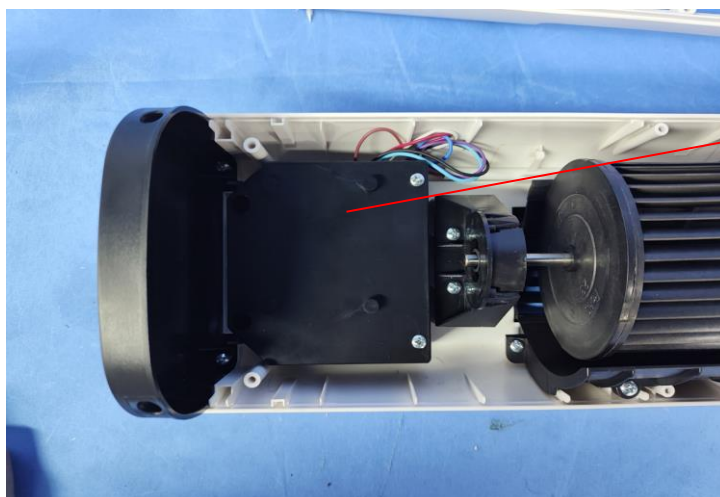
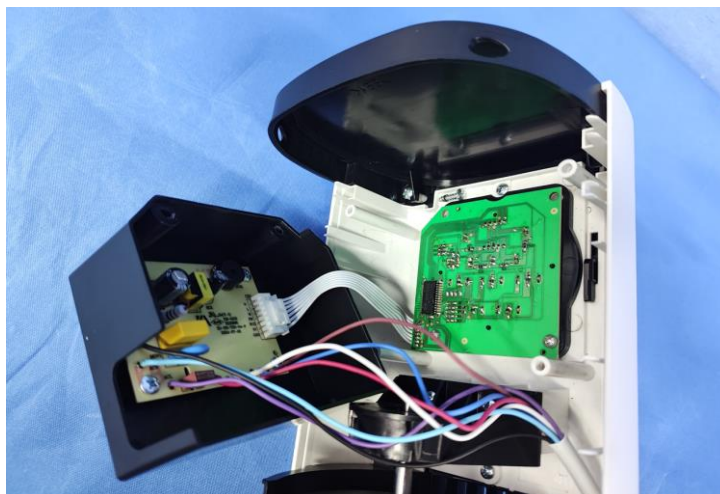


Photo 66 - Internal view for NDTFT23R and NDTFT23RH



3.0 Product Photographs

Photo 67 - Internal view for NDTFT23R

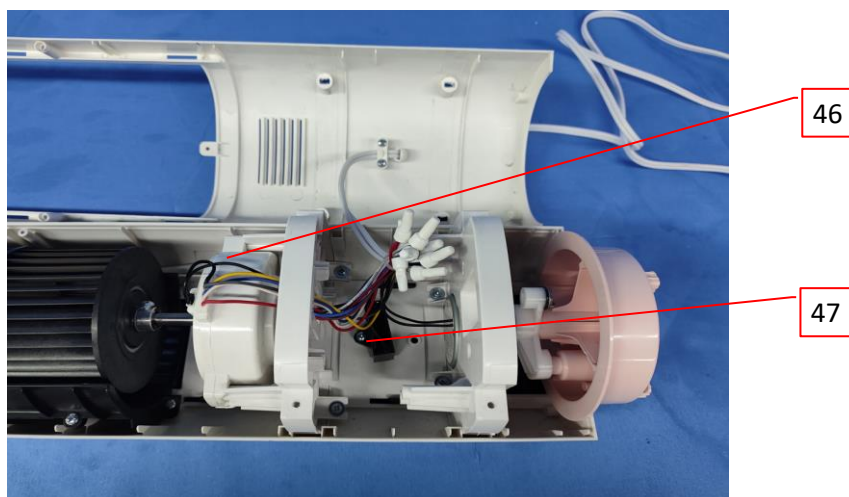


Photo 68 - Internal view for NDTFT23R

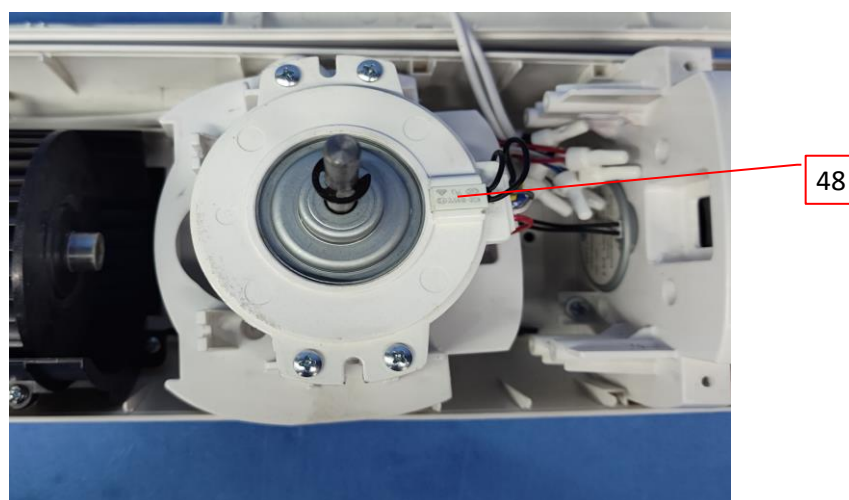
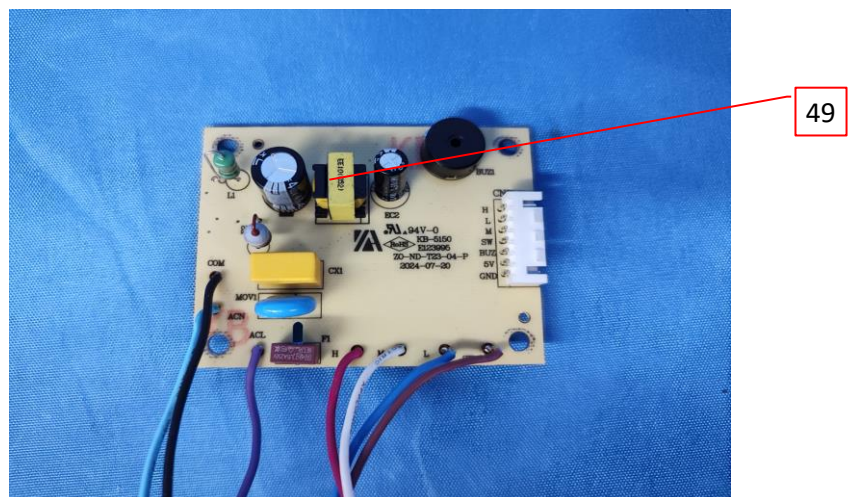


Photo 69 - Power PCB view for NDTFT23R and NDTFT23RH



3.0 Product Photographs

Photo 70 - Power PCB view for NDTFT23R and NDTFT23RH

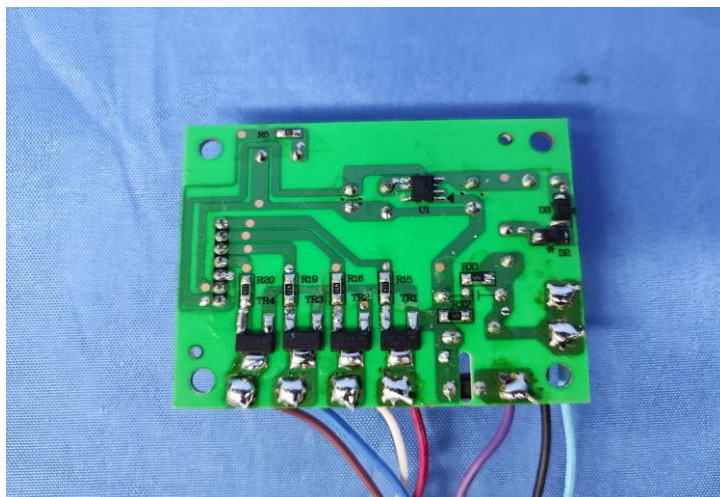


Photo 71 - Display and control PCB view for NDTFT23R and NDTFT23RH

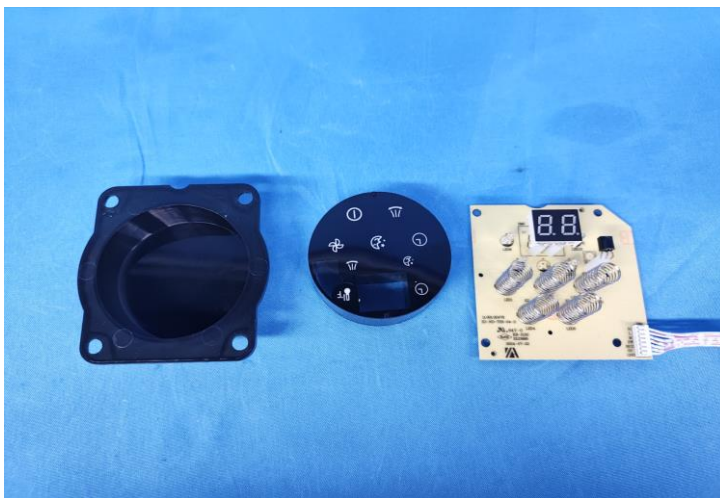
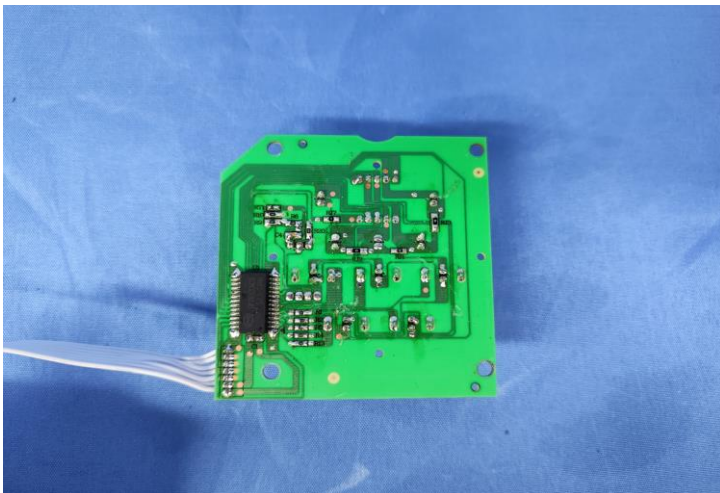


Photo 72 - Display and control PCB view for NDTFT23R and NDTFT23RH



3.0 Product Photographs

Photo 73 - Overall view for NDTFT23RH



Photo 74 - Overall view for NDTFT23RH



Photo 75 - Overall view for NDTFT23RH



3.0 Product Photographs

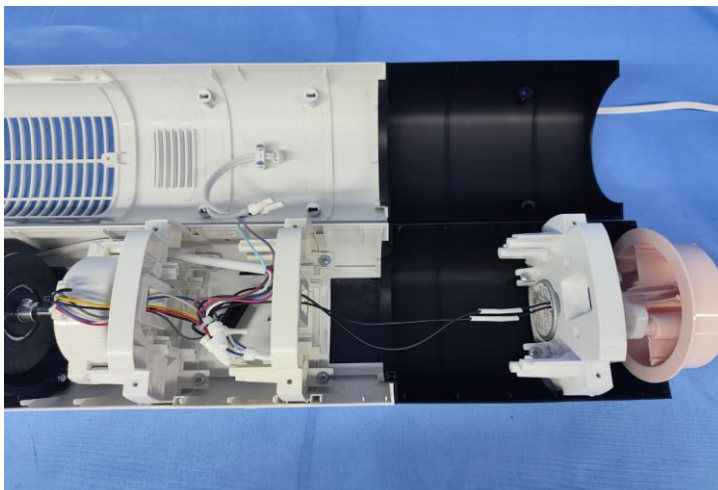
Photo 76 - Overall view for NDTFT23RH



Photo 77 - Internal view for NDTFT23RH



Photo 78 - Internal view for NDTFT23RH



4.0 Critical Components						
# Photo	Item no. ¹	Name	Manufacturer/ trademark ²	Type / model ²	Technical data and securement means	Mark of conformity ³
1	1	Display cover	NINGBO LG YONGXING CHEMICAL CO LTD (E203955)	HI-121H	ABS, HB, HWI: 3, HAI: 0, RTI (90 80 90), Min,thickness 2.0mm. Assembled together with front cover by screws.	UR
1	2	Front cover	NINGBO LG YONGXING CHEMICAL CO LTD (E203955)	HI-121H	ABS, HB, HWI: 3, HAI: 0, RTI (90 80 90), Min,thickness 2.0mm. Assembled together with rear cover by screws.	UR
1	3	Supply cord	Various	SPT-2-R	1.8-3.0m length, rated 18AWG×2C. 60°C or 105°C. Terminated in a recognized fused polarized plug.	UL, ETL
1	4	Plug	Various	Various	Type 1-15P, incorporated with a fuse of Max. 5A.	UL, ETL
2	5	Feet	NINGBO LG YONGXING CHEMICAL CO LTD (E203955)	HI-121H	ABS, HB, HWI: 3, HAI: 0, RTI (90 80 90), Min,thickness 1.5mm. Assembled together with main body by screws.	UR
3	6	Top cover	NINGBO LG YONGXING CHEMICAL CO LTD (E203955)	HI-121H	ABS, HB, HWI: 3, HAI: 0, RTI (90 80 90), Min,thickness 2.0mm, Assembled together with appliance body by special structure.	UR
3	7	Button	NINGBO LG YONGXING CHEMICAL CO LTD (E203955)	HI-121H	ABS, HB, HWI: 3, HAI: 0, RTI (90 80 90), Min,thickness 2.0mm.	UR
5	8	Fan wheel	NINGBO LG YONGXING CHEMICAL CO LTD (E203955)	HI-121H	ABS, HB, HWI: 3, HAI: 0, RTI (90 80 90), Min,thickness 1.5mm. Assembled together with fan motor by screws.	UR
5	9	Fan motor 1	Ningbo Ningda Electrical Appliances Co.,Ltd	YSZ-45 GMDCT14 DEG-16/NR	120V, 60Hz, 45W, Class A, Assembled together with motor support by screws, for NDTFT14RH, NDTFT14RL, NDTFT21R, NDTFT21RH, NDTFT21RB, NDTFT21RBH, 5312, 5314, 5321, 5312H, 5314H, 5321H	See 5.0
			Ningbo Paniya Electrical Technology Co.,Ltd.	YSZ-45 GMDCT14 DEG-16/NR	120V, 60Hz, 45W, Class A, Others are same as above.	See 5.0
5	10	Plastic support	NINGBO LG YONGXING CHEMICAL CO LTD (E203955)	HI-121H	ABS, HB, HWI: 3, HAI: 0, RTI (90 80 90), Min,thickness 1.5mm. for NDTFT14RH, NDTFT4EM, NDTFT4EH, NDTFT21RH, NDTFT23RH, NDTFT21RBH, 5314, 5304, 5348 and 5314H	UR
5	11	Rear cover	NINGBO LG YONGXING CHEMICAL CO LTD (E203955)	HI-121H	ABS, HB, HWI: 3, HAI: 0, RTI (90 80 90), Min,thickness 2.0mm. Assembled together with fornt cover by screws.	UR
6	12	Cable Ties	Various	Various	Used to fix internal wires.	UR
6	13	Motor support	NINGBO LG YONGXING CHEMICAL CO LTD (E203955)	HI-121H	ABS, HB, HWI: 3, HAI: 0, RTI (90 80 90), Min,thickness 1.8mm. Assembled together with enclosure by screws.	UR

4.0 Critical Components							
#	Photo	Item no. ¹	Name	Manufacturer/ trademark ²	Type / model ²	Technical data and securement means	Mark(s) of conformi 3
6		14	Synchronous Motor 1	NINGBO TIANLING ELECTROMECHANICAL CO LTD LTD (E494337)	49TYJ	100-120V~, 50/60Hz, Class A, Assembled together with motor support by screws, for NDTFT14RH, NDTFT14RL, NDTFT21R, NDTFT21RH, NDTFT21RB, NDTFT21RBH, NDTFT23R, NDTFT23RH, 5312, 5314, 5321, 5312H, 5314H, 5321H, 5323	UR
				NINGBO JIULING MOTOR CO LTD (E249611)	49TYJ	110-120V~, 50/60Hz, Class A. Others same as above.	UR
6		15	Motor running capacitor 1	ZHEJIANG YUWANG ELECTRIC APPLIANCE CO LTD (E237957)	CBB61	300VAC, 2uF±5% or 2.5uF±5%, 50/60Hz, T70. Secued on the plastic enclosure by screws, for NDTFT14RH, NDTFT14RL, NDTFT21R, NDTFT21RH, NDTFT21RB, NDTFT21RBH, 5312, 5314, 5321, 5312H, 5314H, 5321H	UR
				GUANGDONG FENGMING ELECTRONIC TECH CO LTD (E215893)	CBB61	600VAC, 2uF±5% or 2.5uF±5%, 50/60Hz, T105. Others same as above.	UR
6		16	Wire connector	HEAVY POWER CO LTD (E113650)	CE2	Rated 105°C. Used to connect internal wires.	UR
					CE5		
				SHENZHEN HONGYU ELECTRICAL CO LTD (E314734)	HY-CE2	Rated 105°C. Used to connect internal wires.	UR
					HY-CE5		
7		17	PCB board	Various	Various	V-0, Min thickness: 1.5mm. 130°C, Assembled together with enclosure by screws	UR
7		18	Internal wire	Various	1007	300V, 80°C, VW-1, 18-22AWG for main, 20-24AWG for motor, 22-26AWG for PCB	UR
					1015	600V or 750V, 80°C or 90°C or 105°C, VW-1, others as same as above	UR
					1332	300V, 200°C, VW-1, others as same as above	UR
					2468	300V, 80°C, VW-1, others as same as above	UR
					3135	600V, 200°C, VW-1, others as same as above	UR

4.0 Critical Components							
#	Photo	Item no. ¹	Name	Manufacturer/ trademark ²	Type / model ²	Technical data and securement means	Mark of conformi 3
7		19	X2 capacitor 1	DAIN ELECTRONICS CO LTD (E147776)	MPX	2.0μF, 250VAC or 275VAC or 310VAC, T100 or T110, Secured to PCB by soldering, for NDTFT14RH, NDTFT14RL, 5312, 5314, 5312H and 5314H.	UR
				MEX			
				GUANGDONG JURCC ELECTRONICS CO LTD (E343072)	MPK/MKP	2.0μF, 275VAC or 305VAC or 310VAC, T110, others same as above.	UR
				TENTA ELECTRIC INDUSTRIAL CO LTD (E222911)	MEX	2.0μF, 250VAC or 275VAC, T100, others same as above.	UR
				MEX	2.0μF, 310VAC, T110, others same as above.	UR	
				GUANGDONG FENGMIN ELECTRONIC TECH CO LTD (E345487)	MKP-X2	2.0μF, 250VAC or 275VAC or 310VAC, T85 or T105 or T110, others same as above.	UR
				WINDAY ELECTRONIC (DONG GUAN) CO LTD (E302125)	MPX	2.0μF, 250VAC or 275VAC or 280Vac or 300VAC or 310VAC, T100 or T110, others same as above	UR
				Dongguan Chengdong Electronic Technology Co Ltd (E495826)	MPX	2.0μF, 275VAC or 300VAC or 310VAC, T110, others same as above	UR
				Various	Various	2.0μF, 250VAC or 275VAC or 280VAC or 300VAC, or 305VAC or 310VAC or 330VAC or 350VAC, Min.: T85, others same as above	UR
8		20	Display PCB cover	NINGBO LG YONGXING CHEMICAL CO LTD (E203955)	HI-121H	ABS, HB, HWI: 3, HAI: 0, RTI (90 80 90), Min,thickness 2.0mm. Assembled together with front cover by screws.	UR
8		21	Multiple pin connector	Various	Various	Used as connector between PCB and other parts.	UR

4.0 Critical Components							
#	Photo	Item no. ¹	Name	Manufacturer/ trademark ²	Type / model ²	Technical data and securement means	Mark(s) of conformi 3
9		22	Fuse 1	DONGGUAN REOMAX ELECTRONICS TECHNOLOGY CO LTD (E340427)	TBP	250V, 2A, 3.6*10mm, soldered on the main PCB. (For optional PCB 1 of NDTFT4EL, NDTFT4EM, NDTFT4EH, 5304, 5348, 5375, NDTFT14RH, NDTFT14RL, 5312, 5314, 5312H and 5314H)	UR
				LITTELFUSE INC (E136855)	213	125V or 250V, 2A, 3.6*10mm, others same as above.	UR
				XC ELECTRONICS (SHENZHEN) CORP LTD (E249609)	3F	125V or 250V, 2A, 3.6*10mm, others same as above.	UR
					3T	125V or 250V, 2A, 3.6*10mm, soldered on the main PCB	UR
				Various	Various	125V or 250V, 2A, 3.6*10mm, others same as above.	UR
9		22a	Fuse 2	HONG HU BLUELIGHT ELECTRONIC CO LTD (E324232)	6ET	250V, 3.15A, 8.5*8*4mm, soldered on the main PCB. (for optional PCB 2 of NDTFT14RH, NDTFT14RL, 5312, 5314, 5312H and 5314H; for NDTFT23R, NDTFT23RH and 5323)	UR
				DONGGUAN CHEVRON ELECTRONIC TECHNOLOGY CO LTD (E358589)	SET	250V, 3.15A, 8.4*7.7*4.0mm, others same as above.	UR
				SHENZHEN LANSON ELECTRONICS CO LTD (E221465)	SMT	125V or 250V, 3.15A, 8.4*7.7*4.0mm, others same as above.	UR
				DONGGUAN BETTER ELECTRONICS TECHNOLOGY CO LTD (E300003)	932	125V or 250V, 3.15A, 8.5 x 4 x 8mm, others same as above.	UR
				XC ELECTRONICS (SHENZHEN) CORP LTD (E249609)	5TE	125V or 250V, 3.15A, 8.4 x 4.0 x 7.7mm, others same as above.	UR
				Various	Various	125V or 250V, 3.15A, Min. 8.4* 4mm, others same as above.	UR

4.0 Critical Components							
#	Photo	Item no. ¹	Name	Manufacturer/ trademark ²	Type / model ²	Technical data and securement means	Mark(s) of conformity ³
9		22b	Fuse 3	HONG HU BLUELIGHT ELECTRONIC CO LTD (E324232)	6ET	250V, 2A, 8.5*8*4mm, soldered on the main PCB. (for optional PCB 2 of NDTFT4EL, NDTFT4EM, NDTFT4EH, 5304, 5348, 5375)	UR
				DONGGUAN CHEVRON ELECTRONIC TECHNOLOGY CO LTD (E358589)	SET	250V, 2A, 8.4*7.7*4.0mm, others same as above.	UR
				SHENZHEN LANSON ELECTRONICS CO LTD (E221465)	SMT	125V or 250V, 2A, 8.4*7.7*4.0mm, others same as above.	UR
				Dongguan Better Electronics Technology Co., Ltd.(E300003)	932	250V, 2A 8.5*4*8, others same as above.	UR
				Various	Various	125V or 250V, 2A, Min. 8.4* 4mm, others same as above.	UR
9		23	Varistor 1	Various	Various	240VDC, T85 or T105 or T125 . Soldered on the main PCB, for NDTFT14RH, NDTFT14RL, 5312, 5314, 5312H and 5314H.	UR

4.0 Critical Components							
#	Photo	Item no. ¹	Name	Manufacturer/ trademark ²	Type / model ²	Technical data and securement means	Mark (e) of conformi 3
9		24	X2 capacitor 2	DAIN ELECTRONICS CO LTD (E147776)	MPX	0.1µF, 250VAC or 275VAC or 310VAC, T100 or T110, Secured to PCB by soldering, for NDTFT14RH, NDTFT14RL, NDTFT21R, NDTFT21RH, NDTFT21RB, NDTFT21RBH, NDTFT23R, NDTFT23RH, 5312, 5314, 5321, 5312H, 5314H, 5321H and 5323	UR
				MEX			
				GUANGDONG JURCC ELECTRONICS CO LTD (E343072)	MPK/MKP	0.1µF, 275VAC or 305VAC or 310VAC, T110, others same as above.	UR
				TENTA ELECTRIC INDUSTRIAL CO LTD (E222911)	MEX	0.1µF, 250VAC or 275VAC, T100, others same as above.	UR
					MEX	0.1µF, 310VAC, T110, others same as above.	UR
				GUANGDONG FENGMING ELECTRONIC TECH CO LTD (E345487)	MKP-X2	0.1µF, 250VAC or 275VAC or 310VAC, T85 or T105 or T110, others same as above.	UR
				WINDAY ELECTRONIC (DONG GUAN) CO LTD (E302125)	MPX	0.1µF, 250VAC or 275VAC or 280Vac or 300VAC or 310VAC, T100 or T110, others same as above	UR
				Dongguan Chengdong Electronic Technology Co Ltd (E495826)	MPX	0.1µF, 275VAC or 300VAC or 310VAC, T110, others same as above	UR
				FOSHAN SHUNDE BEIJIAO HUA DA ELECTRIC INDUSTRIAL CO LTD (E227157)	HD MKP	0.1µF, 275VAC, T85 or T105 or T110, others same as above	UR
				JYH HSU (JEC) ELECTRONICS LTD (E356696)	MPX	0.1µF, 275VAC, T110, others same as above	UR
				Wuxi Walson Electronics Co LTD (E483293)	MKP	0.1µF, 275VAC, T110, others same as above	UR
				SHENZHEN WEIDY INDUSTRIAL DEVELOPMENT CO LTD (E334332)	MKP	0.1µF, 275VAC, T110, others same as above	UR
				DONGGUAN QINHONG (QNR) ELECTRONIC TECHNOLOGY CO LTD (E488626)	MPX	0.1µF, 275VAC, T110, others same as above	UR
				Various	Various	0.1µF, 250VAC or 275VAC or 280VAC or 300VAC, or 305VAC or 310VAC or 330VAC or 350VAC. Min.: T85. others same as above	UR

4.0 Critical Components							
#	Photo	Item no. ¹	Name	Manufacturer/ trademark ²	Type / model ²	Technical data and securement means	Mark of conformi 3
15		25	Control panel cover	REHAU INC (E115326)	RAU-PVC 1134(b)	PVC, HB, RTI(50 50 50), Min,thickness 0.3mm. Assembled together with man body by special structure, for NDTFT4EH, NDTFT4EM, NDTFT4EL, 5375, 5304 and 5348.	UR
17		26	Air inlet grill cover	NINGBO LG YONGXING CHEMICAL CO LTD (E203955)	HI-121H	ABS, HB, HWI: 3, HAI: 0, RTI (90 80 90), thickness 1.5mm. Assembled together with rear cover by screws.	UR
18		27	Heating shrinkable tube	SHENZHEN WOER HEAT-SHRINKABLE MATERIAL CO LTD (E203950)	RSFR-H	125°C, 600V, VW-1, Used asinsulaion of bare terminal	UR
				DONGGUAN SALIPT CO LTD (E209436)	SALIPTS-901-600	125°C, 600V, VW-1, Used asinsulaion of bare terminal	UR
19		28	Fan motor 2	NINGBO NINGDA ELECTRICAL APPLIANCES CO LTD	YSZ-45 GMDCT4D EG/C	120V, 60Hz, 45W, Class A, Assembled together with motor support by screws for NDTFT4EL, NDTFT4EM, NDTFT4EH, 5375, 5304 and 5348	See 5.0
20		29	Wire connector box	NINGBO LG YONGXING CHEMICAL CO LTD (E203955)	LUPOY GN-5001RFD	ABS/PC, V-2, RTI (60 60 60), Min,thickness 1.0mm. Assembled together with fornt cover by screws. For NDTFT4EL, NDTFT4EM, NDTFT4EH, 5304, 5348, 5375.	UR
22		30	Synchrono us Motor 2	FOSHAN SHUNDE HENGXING MICRO MOTOR CO LTD (E199324)	TYK50-16	100-120V~, 50/60Hz, Class A, Assembled together with swing motor support by screws, for NDTFT4EL, NDTFT4EM, NDTFT4EH, 5375, 5304 and 5348.	UR
23		31	Connector	Ningbo Ningda Electrical Appliances Co.,Ltd	KL421	Use to connect wire, for NDTFT4EL, NDTFT4EM, NDTFT4EH, 5375, 5304 and 5348.	See 5.0
23		32	Strain relief	LG CHEMICAL LTD (E67171)	HI-2202	PP, HB, RTI(65 65 65), Min.thickness 1.5mm. Assembled together with plastic enclosure by screws.	UR
25		33	Motor running capacitor 2	ZHEJIANG YUWANG ELECTRIC APPLIANCE CO LTD (E237957)	CBB61	300VAC, 2uF±5%, 50/60Hz, T70. Secued on the plastic enclosure by screws, for NDTFT4EL, NDTFT4EM, NDTFT4EH, 5375, 5304 and 5348.	UR
				GUANGDONG FENGMING ELECTRONIC TECH CO LTD (E215893)	CBB61	600VAC, 2uF±5%, 50/60Hz, T105. Others same as above.	UR

4.0 Critical Components							
#	Photo	Item no. ¹	Name	Manufacturer/ trademark ²	Type / model ²	Technical data and securement means	Mark of conformity ³
25		34	Motor running capacitor 3	ZHEJIANG YUWANG ELECTRIC APPLIANCE CO LTD (E237957)	CBB61	300VAC, 2.5uF±5%, 50/60Hz, T70. Secued on the plastic enclosure by screws, for NDTFT4EL, NDTFT4EM, NDTFT4EH, 5375, 5304 and 5348.	UR
				GUANGDONG FENGMING ELECTRONIC TECH CO LTD (E215893)	CBB61	600VAC, 2.5uF±5%, 50/60Hz, T105. Others same as above.	UR
26		35	X2 capacitor 3	DAIN ELECTRONICS CO LTD (E147776)	MPX	0.47μF, 250VAC or 275VAC or 310VAC, T100 or T110, Secured to PCB by soldering, for NDTFT4EL, NDTFT4EM, NDTFT4EH, 5375, 5304 and 5348.	UR
				MEX			
				GUANGDONG JURCC ELECTRONICS CO LTD (E343072)	MPX/MKP	0.47μF, 275VAC or 305VAC or 310VAC, T110, others same as above.	UR
				GUANGDONG FENGMING ELECTRONIC TECH CO LTD (E345487)	MKP-X2	0.47μF,, 250VAC or 275VAC or 310VAC, T85 or T105 or T110, others same as above.	UR
				WINDAY ELECTRONIC (DONG GUAN) CO LTD (E302125)	MPX	0.47μF, 250VAC or 275VAC or 280Vac or 300VAC or 310VAC, T100 or T110, others same as above	UR
				Dongguan Chengdong Electronic Technology Co Ltd (E495826)	MPX	0.47μF, 275VAC or 300VAC or 310VAC, T110, others same as above	UR
				Various	Various	0.47μF, 250VAC or 275VAC or 280VAC or 300VAC, or 305VAC or 310VAC or 330VAC or 350VAC, Min.: T85, others same as above	UR

4.0 Critical Components							
#	Photo	Item no. ¹	Name	Manufacturer/ trademark ²	Type / model ²	Technical data and securement means	Mark (e) of conformi 3
26		36	X2 capacitor 4	DAIN ELECTRONICS CO LTD (E147776)	MPX	0.01μF, 250VAC or 275VAC or 310VAC, T100 or T110, Secured to PCB by soldering, for NDTFT4EL, NDTFT4EM, NDTFT4EH, 5375, 5304 and 5348.	UR
					MEX		
				GUANGDONG JURCC ELECTRONICS CO LTD (E343072)	MPX/MKP	0.01μF, 275VAC or 305VAC or 310VAC, T110, others same as above.	UR
				WINDAY ELECTRONIC (DONG GUAN) CO LTD (E302125)	MPX	0.01μF, 250VAC or 275VAC or 280Vac or 300VAC or 310VAC, T100 or T110, others same as above	UR
				Dongguan Chengdong Electronic Technology Co Ltd (E495826)	MPX	0.01μF, 275VAC or 300VAC or 310VAC, T110, others same as above	UR
				Various	Various	0.01μF, 250VAC or 275VAC or 280VAC or 300VAC, or 305VAC or 310VAC or 330VAC or 350VAC, Min.: T85, others same as above	UR

4.0 Critical Components							
#	Photo	Item no. ¹	Name	Manufacturer/ trademark ²	Type / model ²	Technical data and securement means	Mark (e) of conformi 3
26		37	Relay 1	XIAMEN HONGFA ELECTROACOUSTIC CO LTD (E504085)	JQC-3FF	277VAC, 10A, or 125VAC, 12A, T85, 12VDC, Secured to PWB by soldering. For optional PCB 1 of NDTFT4EL, NDTFT4EM, NDTFT4EH, 5304, 5348, 5375.	UR
					H3FF		
				SANYOU CORPORATION LIMITED (E190598)	SRD-S-112D	250VAC, 10A, T85, 12VDC, Secured to PWB by soldering.	UR
					SRD-S-112DM		
				NINGBO ZETTLER ELECTRONICS CO LTD (E319069)	JQC-3FF	277VAC, 10A, T85, 12VDC, Secured to PWB by soldering.	UR
					HF3FF		
				ANHUI MINGGUANG LIFE ELECTRIC CO LTD (E333244)	BRD-SS-112L	250VAC, 7A or 10A or 12A, T85, 12VDC. Secured to PWB by soldering.	UR
				DONGGUAN GOLDEN ELECTRICAL APPLIANCE CO LTD (E321783)	GH-1A-12L	250VAC, 7A or 10A or 12A, T105, 12VDC. Secured to PWB by soldering.	UR
				DONGGUAN YONGNENG ELECTRONICS CO LTD (E320522)	YX202-S-112D	250VAC or 275VAC, 10A, T85, 12VDC. Secured to PWB by soldering.	UR
				NINGBO HUILONGCANG ELECTRONICS CO LTD (E215689)	973-12VDC-SL-B	250VAC, 10A or 16A, T85, 12VDC. Secured to PWB by soldering.dering.	UR
Various	Various	125VAC, 250VAC, 275VAC or 277VAC, min. 7A, min. T85, 12VDC. Secured to PWB by soldering.	UR				

4.0 Critical Components							
#	Photo	Item no. ¹	Name	Manufacturer/ trademark ²	Type / model ²	Technical data and securement means	Marking of conformi 3
26		37a	Relay 2	SANYOU CORPORATION LIMITED (E190598)	SRD-S-105D4	250VAC, 10A, or 125VAC, 15A. T85, 5VDC, Secured to PWB by soldering. For optional PCB 2 of NDTFT4EL, NDTFT4EM, NDTFT4EH, 5304, 5348, 5375.	UR
					SRD-S-105DM		
				XIAMEN HONGFA ELECTROACOU STIC CO LTD (E504085)	JQC-3FF	277VAC, 10A, or 125VAC, 12A, T85, 5VDC, Secured to PWB by soldering.	UR
					H3FF		
				ANHUI MINGGUANG LIFE ELECTRIC CO LTD (E333244)	BRD-SS-105L	250VAC, 7A or 10A or 12A, T85, 5VDC. Secured to PWB by soldering.	UR
				DONGGUAN GOLDEN ELECTRICAL APPLIANCE CO LTD (E321783)	GH-1A-05L	250VAC, 7A or 10A or 12A, T105, 5VDC. Secured to PWB by soldering.	UR
				DONGGUAN YONGNENG ELECTRONICS CO LTD (E320522)	YX202-S-105D	250VAC/275VAC, 10A, or 125V, 15A, T85, 5VDC. Secured to PWB by soldering.	UR
				NINGBO HUILONGCANG ELECTRONICS CO LTD (E215689)	973-05VDC-SL-B	250VAC, 10A or 16A, T85, 5VDC. Secured to PWB by soldering.dering.	UR
				Various	Various	125VAC, 250VAC, 275VAC or 277VAC, min. 7A, min. T85, 5VDC. Secured to PWB by soldering.	UR
26		38	Varistor 2	Various	Various	560VDC,T85 or T105 or T125 . Soldered on the main PCB, for NDTFT4EL, NDTFT4EM, NDTFT4EH, 5375, 5304 and 5348.	UR
2		39	Marking label (no shown)	Various	Various	60°C. Suitable to stick on enclosure surface.	UR
46		40	Indicator cover	NINGBO LG YONGXING CHEMICAL CO LTD (E203955)	HI-121H	ABS, HB, HWI: 3, HAI: 0, RTI (90 80 90), Min,thickness 2.0mm. Snap in top over.	UR

4.0 Critical Components							
#	Photo	Item no. ¹	Name	Manufacturer/ trademark ²	Type / model ²	Technical data and securement means	Mark of conformi 3
46		41	Varistor 3	SHANTOU HIGH-NEW TECHNOLOGY DEVELOPMNT ZONE SONGTIAN ENTERPRISE CO LTD (E330837)	10D471K	300VAC, Vn=470VDC, T125 Soldered on the main PCB (for NDTFT21R, NDTFT21RH, NDTFT21RB, NDTFT21RBH, NDTFT23R, NDTFT23RH, 5321, 5321H and 5323)	UR
				DONGGUAN CHENG DONG ELECTRONIC TECHNOLOGY CO LTD (E515504)	CDSPC-10D471K	300VAC, Vn=470VDC, T125 Soldered on the main PCB, others are same as above.	UR
				KAY (WUXI) ELECTRONIC CO LTD (E331580)	MYG07-471	250VAC, Vn=470VDC, T85 Soldered on the main PCB, others are same as above.	UR
					MYG10-471	250VAC, Vn=470VDC, T85 Soldered on the main PCB, others are same as above.	UR
				HONGZHI ENTERPRISES LTD (E324904)	HEL10D471K	300VAC, Vn=470VDC, T105 Soldered on the main PCB, others are same as above.	UR
				DONG GUAN CITY JIANKUN ELECTRONICS TECHNOLOGY CO LTD (E489693)	10D471K	300VAC, Vn=470VDC, T105 Soldered on the main PCB, others are same as above.	UR
43		42	Fuse 4	DONGGUAN QINHONG (QNR) ELECTRONIC TECHNOLOGY CO LTD (E495834)	QNR-10D471K	300VAC, Vn=470VDC, T125 Soldered on the main PCB, others are same as above.	UR
				HONG HU BLUELIGHT ELECTRONIC CO LTD (E324232)	6ET	250V, 1A, 8.5*8*4mm, soldered on the main PCB. (for NDTFT21R, NDTFT21RH, NDTFT21RB, NDTFT21RBH, 5321, 5321H)	UR
				SHENZHEN LANSON ELECTRONICS CO LTD (E221465)	SMT	250V, 1A, 8.4*4.0*7.7mm, others same as above.	UR
58		43	Decoration	C ELECTRONICS (SHENZHEN) CORP LTD (E249609)	5TE	250V, 1A, 8.4*4.0*7.7mm, others same as above.	UR
				NINGBO LG YONGXING CHEMICAL CO LTD (E203955)	HI-121H	ABS, HB, HWI: 3, HAI: 0, RTI (90 80 90), Min,thickness 2.0mm. Snap in Front cover.	UR

4.0 Critical Components						
# Photo	Item no. ¹	Name	Manufacturer/ trademark ²	Type / model ²	Technical data and securement means	Mark (e) of conformity ³
58	44	Air outlet grilles cover	NINGBO LG YONGXING CHEMICAL CO LTD (E203955)	HI-121H	ABS, HB, HWI: 3, HAI: 0, RTI (90 80 90), Min,thickness 2.0mm. Secrued with front cover by snap-fit and screws.	UR
65	45	PCB box	NINGBO LG YONGXING CHEMICAL CO LTD (E203955)	HI-121H	ABS, HB, HWI: 3, HAI: 0, RTI (90 80 90), Min,thickness 2.0mm. Secrued in front cover by screws.	UR
67	46	Fan motor 3	NINGBO NINGDA ELECTRICAL APPLIANCES CO LTD	YSZ-45	120V, 60Hz, 45W, Class A, Assembled together with motor support by screws, for NDTFT23R, NDTFT23RH and 5323.	See 5.0
67	47	Motor running capacitor 4	ZHEJIANG YUWANG ELECTRIC APPLIANCE CO LTD (E237957)	CBB61	300VAC, 3.0uF±5%, 50/60Hz, T70. Secued on the plastic enclosure by screws, for NDTFT23R, NDTFT23RH and 5323.	UR
			GUANGDONG FENGMING ELECTRONIC TECH CO LTD (E215893)	CBB61	600VAC, 3.0uF±5%, 50/60Hz, T105. Others same as above.	UR
68	48	Motor protect	Foshan Changhong Tongli Electric Appliance Co Ltd (E309547)	KW-C1	250V, 2A, Tf95, Snap in Fan motor enclosure, for NDTFT23R, NDTFT23RH and 5323.	UR
			JIANGSU CHANGSHENG ELECTRIC APPLIANCE CO LTD (E214731)	18AM-C	250V, 2A, Tf95, Snap in Fan motor enclosure, for NDTFT23R, NDTFT23RH and 5323.	UR
			DONGYANG HENGDIAN THERMAL PROTECTOR FACTORY (GENERAL PARTNERSHIP) (E213246)	KSD series	250V, 2A, Tf95, Snap in Fan motor enclosure, for NDTFT23R, NDTFT23RH and 5323.	UR
69	49	Coil	Ningbo Keli Power Supply Co.,Ltd	EE10	Consists of the following components: (For alternative construction only)	NR
69	49a	Bobbin	Various	PMC	Rated 94V-0, 150°C minimum.	cURus
69	49b	Winding	Various	Magnet Wire	Rated 130°C minimum. 0.23mm diamater. 145Ts.	cURus
69	49c	Tape	Various	PET films with acrylic adhesive insulating tape	Rated 130°C. 0.025mm thick.	cURus
69	49d	Varnish	Various	Varnish	Rated 130°C.	cURus

NOTES:

1) Not all item numbers are indicated (called out) in the photos, as their location is obvious.

4.0 Critical Components

#	Photo	Item no. ¹	Name	Manufacturer/ trademark ²	Type / model ²	Technical data and securement means	Mark(s) of conformi t. ³
---	-------	-----------------------	------	---	------------------------------	-------------------------------------	--

2) "Various" means any type, from any manufacturer that complies with the "Technical data and securement means" and meets the "Mark(s) of conformity" can be used.

3) Indicates specific marks to be verified, which assures the agreed level of surveillance for the component. "NR" - indicates Unlisted and only visual examination is necessary. "See 5.0" indicates Unlisted components or assemblies to be evaluated periodically refer to section 5.0 for details.

5.0 Critical Unlisted CEC Components

INSULATED COIL

Photo #	Item no.	Name	Manufacturer/Trademark	Type / model
5	9	Fan motor 1	Ningbo Ningda Electrical Appliances Co.,Ltd	YSZ-45 GMDCT14DEG-16/NR
Electrical Rating: 120V, 60Hz, 45W				Insulation class A

Component Standard used: UL 1004-1 & UL 1004-3

MATERIALS LIST (refer to illustration 4 for assembly drawing)

Component	Manufacturer	Type/model	Dimensions/thickness/assembly information
Winding	ZHAOQING GAOYAO LIXING INDUSTRIAL & TRADING CO LTD	QZ-2/130	Class 130 (E353092)
Slot liners	JIANGSU YUXING FILM TECHNOLOGY CO LTD	6023D	thickness: 0.14mm (E212271)
Protective device	ZHANGZHOU AUPO ELECTRONICS CO LTD	A4-F	250V~, 2A, Tf130°C, located on the Stator (E140847)
Lead wires	Various	Various	80°C, 300V, VW-1, 20-24AWG

WINDING(S) RESISTANCE

Winding Designation	Wire Size (mm ²)	Wire Type	Turns	Volts	Amps	DC resistance (Ω) +/- 10%:
Main winding	Ø 0.18mm	QZ-2/130	650	120	-	129
Auxi. Winding	Ø 0.18mm	QZ-2/130	740	120	-	157

VERIFICATION PROCESS

Frequency: Annual	Test Site: CEC	Number of samples to test: 1	
Test Name	Test Parameters		
Winding resistance	See resistance per winding above.		
Dielectric Strength	Apply voltage Between	Test Voltage	Test Time
	Live parts to dead metal parts	1240V	60s

5.0 Critical Unlisted CEC Components

INSULATED COIL

Photo #	Item no.	Name	Manufacturer/Trademark	Type / model
19	28	Fan motor 2	NINGBO NINGDA ELECTRICAL APPLIANCES CO LTD	YSZ-45 GMDCT4DEG/C

Electrical Rating: 120V, 60Hz, 45W Insulation class A

Component Standard used: UL 1004-1 & UL 1004-3

MATERIALS LIST (refer to illustration 4a for assembly drawing)

Component	Manufacturer	Type/model	Dimensions/thickness/assembly information
Winding	ZHAOQING GAOYAO LIXING INDUSTRIAL & TRADING CO LTD	QZ-2/130	Class 130 (E353092)
Slot liners	JIANGSU YUXING FILM TECHNOLOGY CO LTD	6023D	thickness: 0.14mm (E212271)
Protective device	ZHANGZHOU AUPO ELECTRONICS CO LTD	A4-F	250V~ , 2A, Tf130°C, located on the Stator (E140847)
Lead wires	Various	Various	80°C, 300V,VW-1, 20-24AWG

WINDING(S) RESISTANCE

Winding Designation	Wire Size (mm ²)	Wire Type	Turns	Volts	Amps	DC resistance (Ω) +/- 10%:
Main winding	Ø 0.18mm	QZ-2/130	1840	120	-	130
Auxi. Winding	Ø 0.16mm	QZ-2/130	2400	120	-	200

VERIFICATION PROCESS

Frequency: Annual	Test Site: CEC	Number of samples to test: 1	
Test Name	Test Parameters		
Winding resistance	See resistance per winding above.		
Dielectric Strength	Apply voltage Between	Test Voltage	Test Time
	Live parts to dead metal parts	1240 Vac	60 s

CONTACTS

Photo #	Item no.	Name	Manufacturer/Trademark	Type / model
23	31	Connector	Ningbo Ningda Electrical Appliances Co.,Ltd	KL421

Electrical Rating: 120VAC

Component Standard used: UL 498

MATERIALS LIST (refer to illustration 4b for assembly drawing)

Component	Manufacturer	Type/model	Dimensions/thickness/assembly information
Plastic	LG CHEMICAL LTD	LW-5303F	PBT,V-0,RTI(130 130 130), (E67171)

VERIFICATION PROCESS

VERIFICATION PROCESS			
Frequency: Annual	Test Site: CEC		Number of samples to test: 1
Test Name		Test Parameters	
Dielectric Strength	Apply voltage Between	Test Voltage	Test Time
	Live parts to dead metal parts	1240 Vac	60 s

5.0 Critical Unlisted CEC Components

INSULATED COIL

Photo #	Item no.	Name	Manufacturer/Trademark	Type / model
5	9	Fan motor 1	Ningbo Paniya Electrical Technology Co.,Ltd.	YSZ-45 GMDCT14DEG-16/NR

Electrical Rating: 120V, 60Hz, 45W Insulation class A

Component Standard used: UL 1004-1 & UL 1004-3

MATERIALS LIST (refer to illustration 4c for assembly drawing)

Component	Manufacturer	Type/model	Dimensions/thickness/assembly information
Winding	ZHAOQING GAOYAO LIXING INDUSTRIAL & TRADING CO LTD	QZ-2/130	Class 130 (E353092)
Slot liners	JIANGSU YUXING FILM TECHNOLOGY CO LTD	6023D	thickness: 0.14mm (E212271)
Protective device	ZHANGZHOU AUPO ELECTRONICS CO LTD	A4-F	250V~, 2A, Tf130°C, located on the Stator (E140847)
Lead wires	Various	Various	80°C, 300V, VW-1, 20-24AWG

WINDING(S) RESISTANCE

Winding Designation	Wire Size	Wire Type	Turns	Volts	Amps	DC resistance (Ω) +/- 10%:
Main winding	Ø 0.18mm	QZ-2/130	650	120	-	114
Auxi. Winding	Ø 0.18mm	QZ-2/130	740	120	-	129

VERIFICATION PROCESS

Frequency: Annual	Test Site: CEC	Number of samples to test: 1	
Test Name	Test Parameters		
Winding resistance	See resistance per winding above.		
Dielectric Strength	Apply voltage Between	Test Voltage	Test Time
	Live parts to dead metal parts	1240V	60s

5.0 Critical Unlisted CEC Components

INSULATED COIL

Photo #	Item no.	Name	Manufacturer/Trademark	Type / model
67	46	Fan motor 3	NINGBO NINGDA ELECTRICAL APPLIANCES CO LTD	YSZ-45

Electrical Rating: 120V, 60Hz, 45W Insulation class A

Component Standard used: UL 1004-1 & UL 1004-3

MATERIALS LIST (refer to illustration 4d for assembly drawing)

Component	Manufacturer	Type/model	Dimensions/thickness/assembly information
Winding	ROSHOW TECHNOLOGY CO LTD	Q(A/X)-2/155	Class 155 (E215691)
Enclosure	Zhejiang Xubang Adhesive Technology Co Ltd	XB8836	UP, Rated V-0, HWI=1, HAI=0, RTI (105, 130, 130), Min. thickness 1.5mm (E530211)
	Hangzhou JiaDun Electrical Equipment Co Ltd	JD800	UP, Rated V-0, HWI=1, HAI=0, RTI (130, 130, 130), Min. thickness 1.5mm (E312935)
Slot liners	JIANGSU YUXING FILM TECHNOLOGY CO LTD	6023D	thickness: 0.14mm (E212271)
Lead wires	Various	1430	105°C, 300V, 22AWG

WINDING(S) RESISTANCE

Winding Designation	Wire Size	Wire Type	Turns	Volts	Amps	DC resistance (Ω) +/- 10%:
Main winding	Ø 0.16mm	Q(A/X)-2/155	450	120	-	138
Auxi. Winding	Ø 0.12mm	Q(A/X)-2/155	480	120	-	245

VERIFICATION PROCESS

Frequency: Annual	Test Site: CEC	Number of samples to test: 1	
Test Name	Test Parameters		
Winding resistance	See resistance per winding above.		
Dielectric Strength	Apply voltage Between	Test Voltage	Test Time
	Live parts to dead metal parts	1240V	60s

6.0 Critical Features

Recognized Component - A component part, which has been previously evaluated by an accredited certification body with restrictions and must be evaluated as part of the basic product considering the restrictions as specified by the Conditions of Acceptability.

Listed Component - A component part, which has been previously Listed or Certified by an accredited Certification Organization with no restrictions and is used in the intended application within its ratings.

Unlisted Component - A part that has not been previously evaluated to the appropriate designated component standard. It may also be a Listed or Recognized component that is being used outside of its evaluated Listing or component recognition.

Critical Features/Components - An essential part, material, subassembly, system, software, or accessory of a product that has a direct bearing on the product's conformance to applicable requirements of the product standard.

Construction Details - For specific construction details, reference should be made to the photographs and descriptions. All dimensions are approximate unless specified as exact or within a tolerance. In addition to the specific construction details described in this Report, the following general requirements also apply.

- 1 Spacing - In primary circuits, 1.59 mm minimum spacing are maintained through air and over surfaces of insulating material between current-carrying parts of opposite polarity and between such current-carrying parts and dead-metal parts.
- 2 Mechanical Assembly - Components such as switches, fuseholders, connectors, wiring terminals and display lamps are mounted and prevented from shifting or rotating by the use of lockwashers, starwashers, or other mounting format that prevents turning of the component.
- 3 Corrosion Protection - All ferrous metal parts are protected against corrosion by painting, plating or the equivalent.
- 4 Accessibility of Live Parts - All uninsulated live parts in primary circuitry are housed within a metal enclosure constructed with no openings other than those specifically described in Sections 4 and 5.
- 5 Grounding - NA
- 6 Polarized Connection - This product is provided with a polarized power supply connection. All single pole switches and fuses are connected only to the ungrounded supply circuit conductor.
- 7 Internal Wiring - Internal wiring is routed away from sharp or moving parts. Internal wiring leads terminating in soldered connections are made mechanically secure prior to soldering. Recognized Component separable (quick disconnect) connectors of the positive detent type, closed loop connectors, or other types specifically described in the text of this report are also acceptable as internal wiring terminals. At points where internal wiring passes through metal walls or partitions, the wiring insulation is protected against abrasion or damage by plastic bushings or grommets.
- 8 Schematics - None.
- 9 Markings - The product is marked on as labeling system as described in item no. 39 of Section 4.0 as follows:
applicant's name/ Brand name
model number
date of manufacturer
electrical ratings
- 10 Cautionary Markings - Refer to Illustration No. 2 for details.
- 11 Installation, Operating and Safety Instructions - Instructions for installation and use of this product are provided by the manufacturer. Refer to Illustration No(s). 1, 1a, 1b for details.

7.0 Illustrations

Illustration 1 - Manual

The texts appear this only are warning on manual , other manual instruction(such Product specification and basic features, Main Features, operation instruction and so on) will be sent with this together.

IMPORTANT SAFEGUARDS

When using an electrical appliance, basic safety precautions should always be observed, including the following:

READ ALL INSTRUCTIONS BEFORE USING

WARNING: To reduce the risk of fire, electrical shock, or injury to person:

1. This fan is for household use only.
2. Before using for the first time, please check that your voltage is in accordance with the product nameplate requirements.
3. Please check the power cord and plug for any damage before use.
4. Always turn the fan OFF and unplug it from the electrical outlet when not in use.
5. Caution is necessary when the appliance is used near children.
6. Do not run the power cord under carpeting and do not cover the cord with throw rugs, runners or similar coverings. Do not route cord under furniture or appliances. Arrange cord away from traffic areas so that it will not be tripped over.
7. Do not operate any fan with a damaged cord or plug. Discard fan or return to an authorized service facility for examination and /or repair.
8. If the fan's power supply cord is damaged, it must be replaced by the manufacturer or its service agent to avoid a safety hazard.
9. Use the fan in a well-ventilated area. When in use, place the fan at least 8 inches from any walls to ensure proper air flow. The fan must not be located immediately below or beside a curtain.
10. Do not obstruct the airflow with any objects or place anything inside the fan opening.
11. Do not use in areas where curtains could be sucked in.
12. Only place the fan on a hard, flat, dry floor.
13. Do not use in extreme temperatures, humidity, or dusty environments.
14. Do not place heavy objects on the fan.
15. Do not place the fan directly below a power outlet or you risk the cord being sucked in.
16. When the fan is oscillating do not manually turn the fan to avoid damage.
17. Always turn off the power supply before unplugging the power cord from the electrical outlet to prevent a short circuit, fire or electric shock.
18. Do not twist or pull the power cord.
19. Do not unplug the fan if your hands are wet, there is danger of electric shock.
20. Children under 8 should not operate the fan.

7.0 Illustrations

Illustration 1a - Manual(continued)

21. This appliance is not intended for use by persons (including children) with reduced physical, sensory or mental capabilities, or lack of experience and knowledge, unless they have been given supervision or instruction concerning use of the appliance by a person responsible for their safety.
22. Children should be supervised to ensure that they do not play with the appliance.
23. Ensure that the fan is switched off from the supply mains before removing the guard.
24. To reduce the risk of fire or electric shock, do not use this fan with any solid-state speed control device.
25. Please unplug or disconnect the appliance from the power supply before servicing.
26. This product employs overload protection (fuse). A blown fuse indicates an overload or short-circuit situation. If the fuse blows, unplug the product from the outlet. Replace the fuse as per the user servicing instructions (follow product marking for proper fuse rating) and check the product. If the replacement fuse blows, a short-circuit may be present and the product should be discarded or returned to an authorized service facility for examination and /or repair.

Warning:

This appliance has a polarized plug (one blade is wider than the other). To reduce the risk of electric shock, this plug is intended to fit in a polarized outlet only one way. If the plug does not fit fully into the electric receptacle, reverse the plug. If it still does not fit, contact a qualified electrician. Do not attempt to subvert this safety feature.

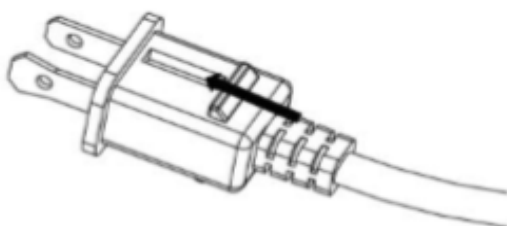
7.0 Illustrations

Illustration 1b - Manual(continued)

To Change the fuse

The following should ONLY be conducted by a qualified professional:

1. Grasp plug and remove from the electrical receptacle. Do not unplug by pulling on the cord.
2. Open the fuse cover by sliding the fuse access cover on the top of the plug toward the blades as shown in the diagram below.



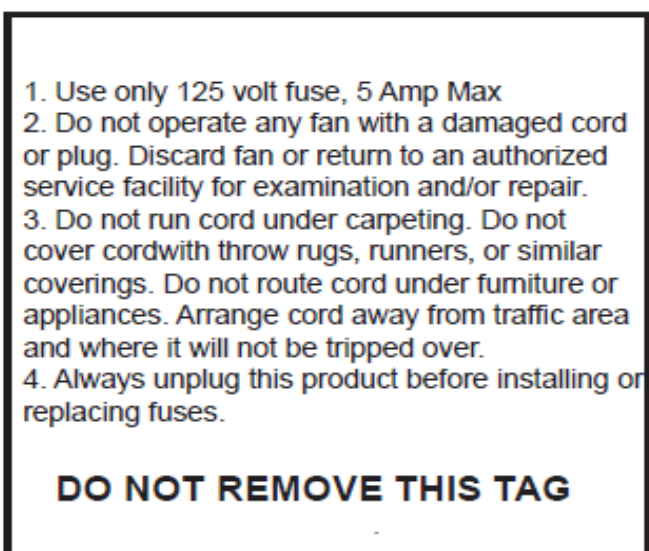
3. Remove fuse carefully. Push the fuse from the other side or turn fuse holder upside down to remove fuse.
4. Risk of fire. Replace the fuse only with 5 Amp, 125 Volt fuses.
5. Close fuse cover by sliding the fuse access cover on the top of the plug away from the blades.
6. Risk of fire. Do not replace the polarized plug as it contains a safety device that should not be removed.

Discard product if the polarized plug is damaged.

SAVE THESE INSTRUCTIONS

7.0 Illustrations

Illustration 2 - Cautionary Markings



Remark: This tag attached to the product within 152.4 mm (6 inches) of the face of the attachment plug.

7.0 Illustrations

Illustration 4 - Fan motor 1
YSZ-45 GMDCT14DEG-16/NR (Ningbo Ningda)

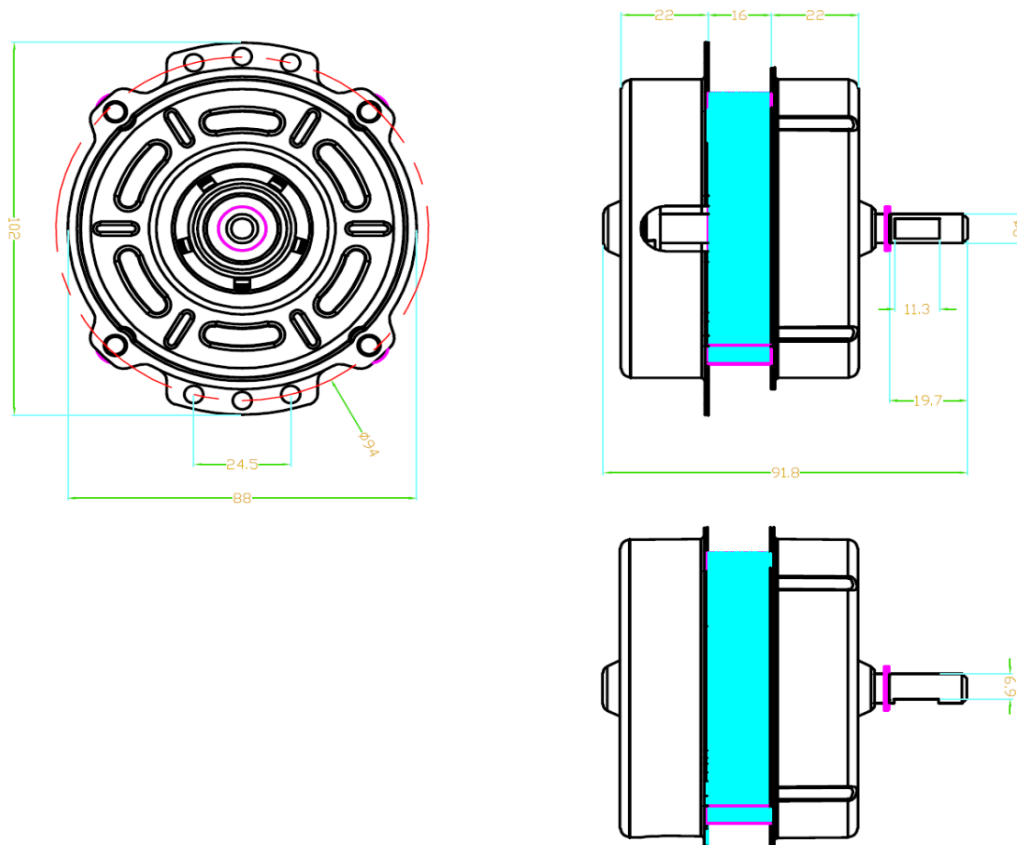
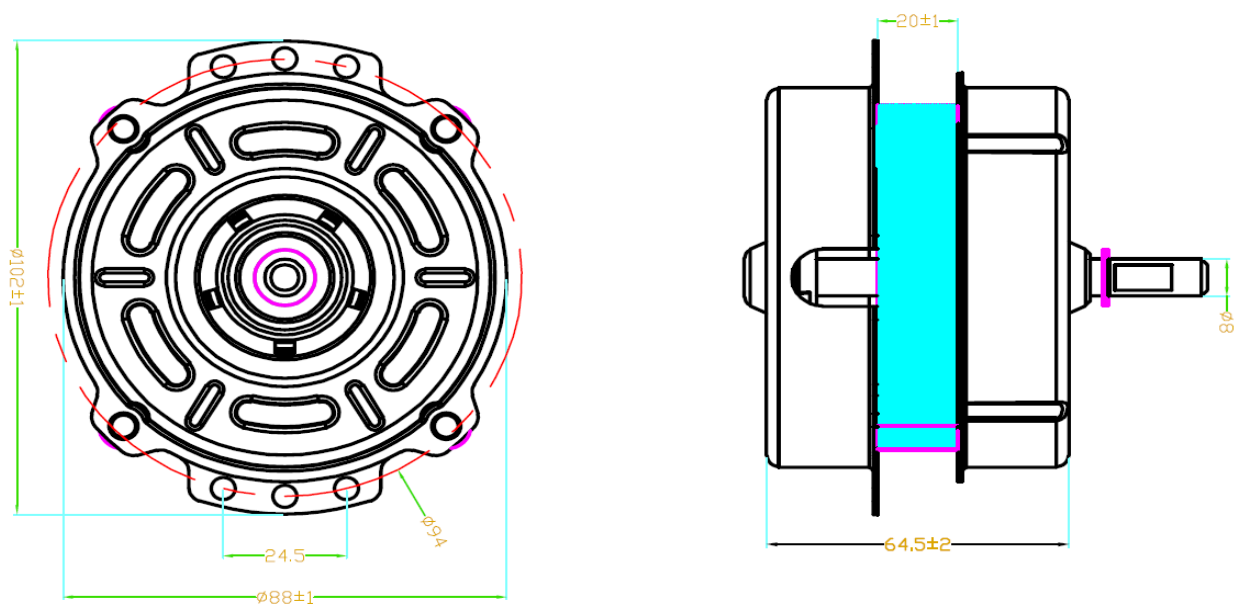
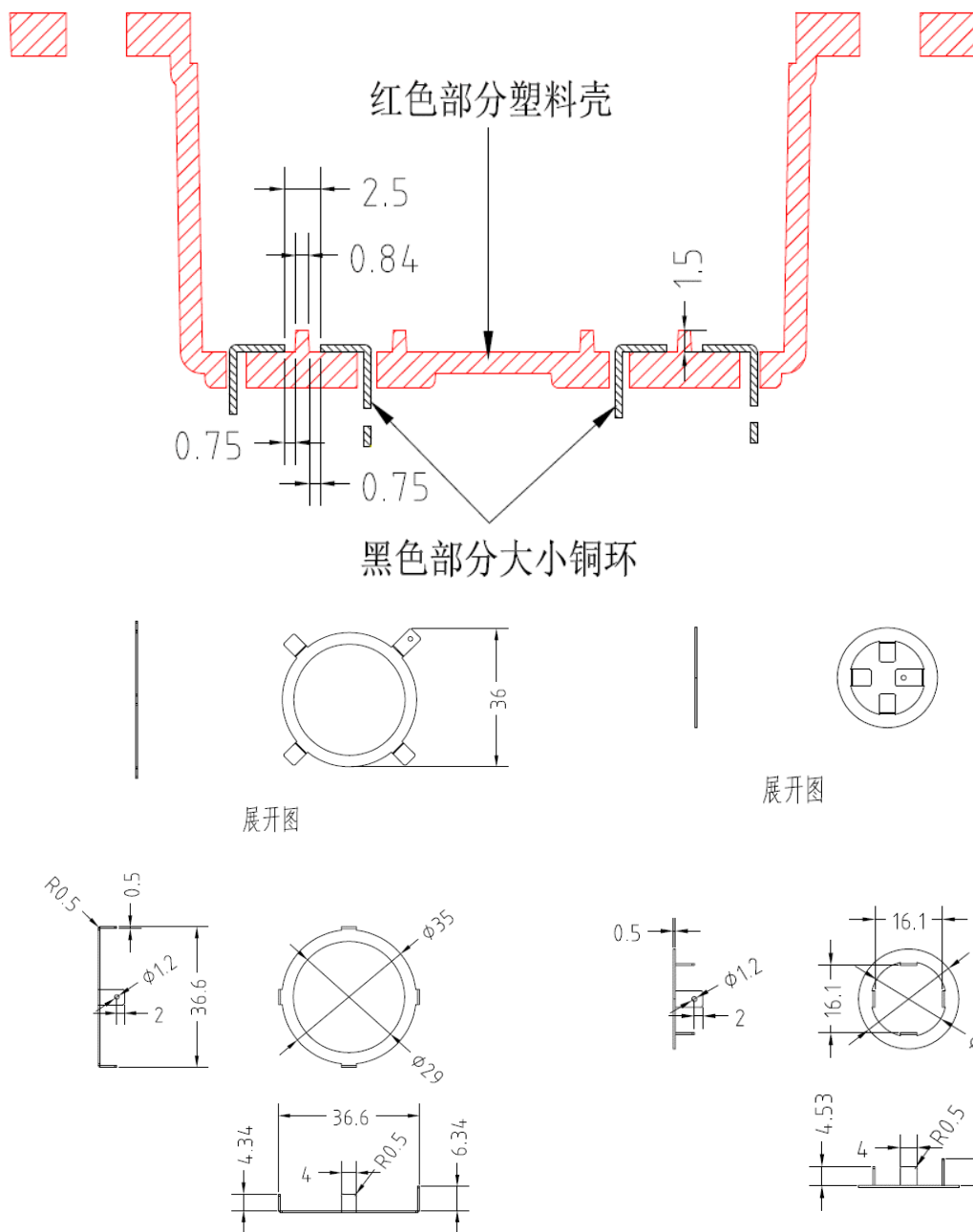


Illustration 4a - Fan motor 2



7.0 Illustrations

Illustration 4b - Connector



7.0 Illustrations

Illustration 4c - Fan motor 1
YSZ-45 GMDCT14DEG-16/NR (Ningbo Paniya)

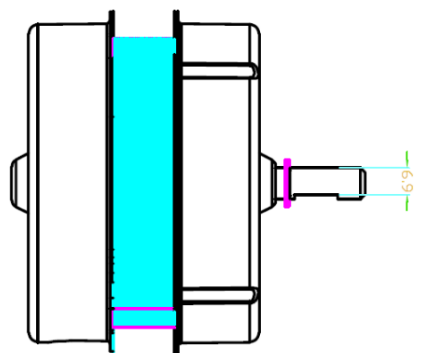
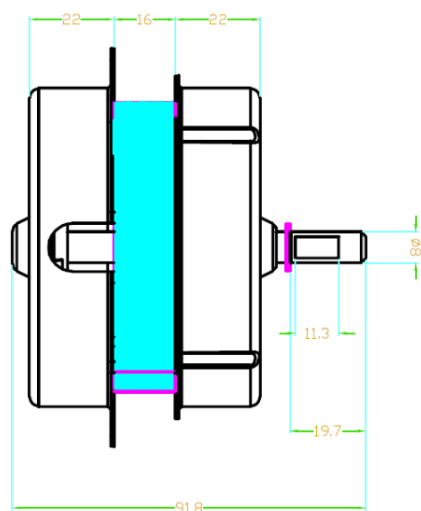
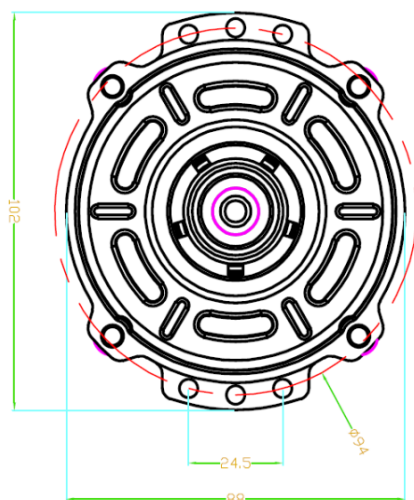
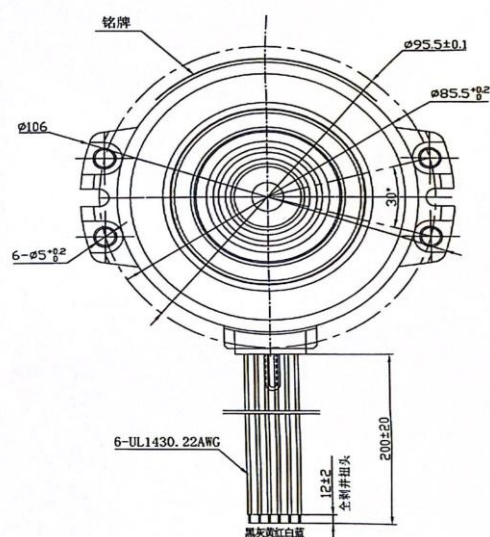
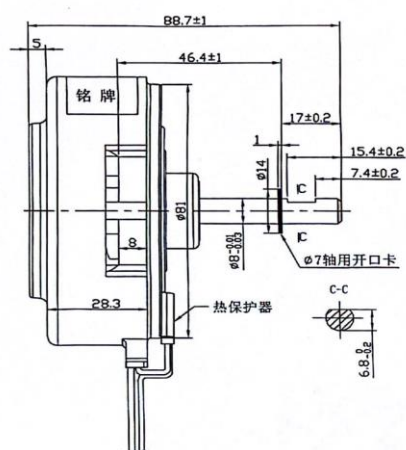




Illustration 4d - Fan motor 3
YSZ-45



8.0 Test Summary					
Evaluation Period	08-Feb-2023 to 06-Mar-2023		Project No.	230200495CXI	
Sample Rec. Date	3-Feb-2022	Condition	Prototype	Sample ID.	0230203-28
Test Location	Intertek Testing Services Shanghai Limited, located at Building No. 86, 1198 Qinzhou Road (North), Shanghai 200233, China.				
Test Procedure	Testing Lab				
Determination of the result includes consideration of measurement uncertainty from the test equipment and methods. The product was tested as indicated below with results in conformance to the relevant test criteria.					
The following tests were performed:					
Test Description	UL 507:2017 Ed.10+R:22Jun2022 /Clause	UL 1004-1:2012 Ed.2+R:05Nov2020 and UL 1004-3:2015 Ed.2+R:31Jan2018 /Clause	UL 746C:2018 Ed.7+R:30Jun2022 /Clause		
Leakage Current Test	41	-	-		
Starting Current Test	44	-	-		
Input Test	45	-	-		
Temperature Test	46	-	-		
Dielectric Voltage Withstand Test	47	-	-		
Locked Rotor Test	50	-	-		
Humidity Conditioning Test	53	-	-		
Strain Relief Test	54	-	-		
Push Back Relief Test	57	-	-		
Oscillating Fan Test	58	-	-		
Tests of Switches and Controls	59	-	-		
Impact Test on Guards	61	-	-		
Static Force Test on Guards	62	-	-		
Impeller Test for Portable Fans	63	-	-		
Component Breakdown Test	65	-	-		
Security of Handle Test	71	-	-		
Stability Test	72	-	-		
Dielectric-Voltage Withstand Test	-	37	-		
Locked-Rotor Temperature Test	-	8	-		
Resistance to Impact	-	-	22		
Severe Conditions	-	-	28		
Mold Stress Relief Distortion	-	-	29		
Input to Motor	-	-	30		
Strain-Relief Test After Mold Stress-Relief Distortion	-	-	31		
Test Description	UL 498:2017 Ed.16+R:17Jan2020/Clause				
Dielectric Voltage Withstand Test	65	-	-		
Mold Stress Relief Test	63	-	-		
Moisture Absorption Resistance Test	64	-	-		
Insulation Resistance	67	-	-		

8.0 Test Summary					
Evaluation Period	2023-12-05 to 2024-01-09		Project No.	2312A0244CXI	
Sample Rec. Date	5-Dec-2023	Condition	Prototype	Sample ID.	A231204-39
Test Location	Building No.11 INSIGMA S&T Parks, No.18 Keji Road, Cixi City, Zhejiang, China				
Test Procedure	Testing Lab				
Determination of the result includes consideration of measurement uncertainty from the test equipment and methods. The product was tested as indicated below with results in conformance to the relevant test criteria.					
The following tests were performed:					
Test Description		UL 507:2017 Ed.10+R:24Aug2 023/ Clause	UL 746C:2018 Ed.7+R:24Mar2 023/ Clause		
Leakage Current Test		41	-	-	
Starting Current Test		44	-	-	
Input Test		45	-	-	
Temperature Test		46	-	-	
Dielectric Voltage Withstand Test		47	-	-	
Locked Rotor Test		50	-	-	
Humidity Conditioning Test		53	-	-	
Strain Relief Test		54	-	-	
Push Back Relief Test		57	-	-	
Oscillating Fan Test		58	-	-	
Tests of Switches and Controls		59	-	-	
Impact Test on Guards		61	-	-	
Static Force Test on Guards		62	-	-	
Impeller Test for Portable Fans		63	-	-	
Component Breakdown Test		65	-	-	
Security of Handle Test		71	-	-	
Stability Test		72	-	-	
Resistance to impact Test		-	56	-	
Mold-stress relief distortion Test		-	61	-	

8.0 Test Summary			
Evaluation Period	2024-11-19 to 2025-02-08		Project No. 2411B1658CXI
Sample Rec. Date	18-Nov-2024	Condition Prototype	Sample ID. A241118-41
Test Location	Building No.11 INSIGMA S&T Parks, No.18 Keji Road, Cixi City, Zhejiang, China		
Test Procedure	Testing Lab		
Determination of the result includes consideration of measurement uncertainty from the test equipment and methods. The product was tested as indicated below with results in conformance to the relevant test criteria.			
The following tests were performed:			
Test Description	UL 507:2017 Ed.10+R:22Aug2 024/ Clause	UL 746C:2018 Ed.7+R:30Nov2 023/ Clause	UL 1004-1:2012 Ed.2+R:05Nov202 0 & UL 1004- 3:2015 Ed.2+R:12Jan202 3/ Clause
Leakage Current Test	41	-	-
Starting Current Test	44	-	-
Input Test	45	-	-
Temperature Test	46	-	-
Dielectric Voltage Withstand Test	47	-	-
Locked Rotor Test	50	-	-
Humidity Conditioning Test	53	-	-
Strain Relief Test	54	-	-
Push Back Relief Test	57	-	-
Oscillating Fan Test	58	-	-
Tests of Switches and Controls	59	-	-
Impact Test on Guards	61	-	-
Static Force Test on Guards	62	-	-
Impeller Test for Portable Fans	63	-	-
Component Breakdown Test	65	-	-
Security of Handle Test	71	-	-
Stability Test	72	-	-
Resistance to impact Test	-	56	-
Mold-stress relief distortion Test	-	61	-
Dielectric-Voltage Withstand Test	-	-	37
Locked-Rotor Temperature Test	-	-	41
8.1 Signatures			
A representative sample of the product covered by this report has been evaluated and found to comply with the applicable requirements of the standards indicated in Section 1.0.			
Completed by:	Mithril Yan	Reviewed by:	Wayle Chen
Title:	Certificate engineer	Title:	Reviewer
Signature:		Signature:	

9.0 Correlation Page For Multiple Listings

The following products, which are identical to those identified in this report except for model number and Listee name, are authorized to bear the ETL label under provisions of the Intertek Multiple Listing Program.

BASIC LISTEE	Ningbo Sekostar International Trading Co Ltd
Address	Room 22-2, Jinshuai Building, Baishalu Street, Cixi, Zhejiang
Country	P. R. China
Product	Tower Fan

MULTIPLE LISTEE 1	None
Address	
Country	
Brand Name	
ASSOCIATED MANUFACTURER	
Address	
Country	
MULTIPLE LISTEE 1 MODELS	BASIC LISTEE MODELS

MULTIPLE LISTEE 2	None
Address	
Country	
Brand Name	
ASSOCIATED MANUFACTURER	
Address	
Country	
MULTIPLE LISTEE 2 MODELS	BASIC LISTEE MODELS

MULTIPLE LISTEE 3	None
Address	
Country	
Brand Name	
ASSOCIATED MANUFACTURER	
Address	
Country	
MULTIPLE LISTEE 3 MODELS	BASIC LISTEE MODELS

10.0 General Information

The Applicant and Manufacturer have agreed to produce, test and label ETL Listed products in accordance with the requirements of this Report. The Manufacturer has also agreed to notify Intertek and to request authorization prior to using alternate parts, components or materials.

COMPONENTS

Components used shall be those itemized in this Intertek report covering the product, including any amendments and/or revisions.

LISTING MARK

The ETL Listing mark applied to the products shall either be separable in form, such as labels purchased from Intertek, or on a product nameplate or other media only as specifically authorized by Intertek. Use of the mark is subject to the control of Intertek.

The mark must include the following four items:

- 1) applicable country identifiers "US" and/or "C" or "US", "C" and "EU"
- 2) the word "Listed" or "Classified" or "Recognized Component" (whichever is appropriate)
- 3) a control number issued by Intertek
- 4) a product descriptor that identifies the standards used for certification. Example:

For US standards, the words, "Conforms to" shall appear with the standard number along with the word, "Standard" or "Std." Example: "Conforms to ANSI/UL Std. XX."

For Canadian standards, the words "Certified to CAN/CSA Standard CXX No. XX." shall be used, or abbreviated, "Cert. to CAN/CSA Std. CXX No. XX."

Can be used together when both standards are used.

If all standards on the ATM have the same standard title, the shared title or its abbreviation may be used in place of the examples above. Example: "Medical Electrical Equipment" or "MEE"; "Information Technology Equipment" or "ITE"; "Audio/Video Information And Communication Technology Equipment" or "A/V ICTE".

Note: A facsimile must be submitted to Intertek, Attn: Follow-up Services for approval prior to use.

The facsimile need not have a control number. A control number will be issued **after signed Certification Agreements** have been received by the Follow-up Services office, approval of the facsimile of your proposed Listing Mark, satisfactory completion of the Listing Report, and scheduling of a factory assessment in your facility.

MANUFACTURING AND PRODUCTION TESTS

Manufacturing and Production Tests shall be performed as required in this Report.

FOLLOW-UP SERVICE

Periodic unannounced audits of the manufacturing facility (and any locations authorized to apply the mark) shall be scheduled by Intertek. An audit report shall be issued after each visit. Special attention will be given to the following:

1. Conformance of the manufactured product to the descriptions in this Report.
2. Conformance of the use of the ETL mark with the requirements of this Report and the Certification Agreement.
3. Manufacturing changes.
4. Performance of specified Manufacturing and Production Tests.

In the event that the Intertek representative identifies non-conformance(s) to any provision of this Report, the Applicant shall take one or more of the following actions:

1. Correct the non-conformance.
2. Remove the ETL Mark from non-conforming product.
3. Contact the issuing product safety evaluation center for instructions.

10.1 Evaluation of Unlisted Components

Because Unlisted Components are uncontrolled, and they do not fall under a third party follow up program, Intertek may require these components to be tested and/or evaluated at least once annually, more often for certain components, as part of the independent certification process. The Unlisted Components in Section 5.0 require testing and/or evaluation as indicated.

The Applicant will be notified, in writing, via the applicable contact methods, as defined in Section 1.0, when these components must be selected and sent to Component Evaluation Center (CEC) for re-evaluation.

Due to particular testing requirements, some components may be requested to be shipped to specific labs. Thus, specific shipment destination(s) for each sample will be provided in the written notification.

Managing CEC Location:

Intertek Testing Services (Shanghai FTZ) Co., Ltd

ETL Component Evaluation Center

Building No. 86, 1198 Qinzhou Road (North)

Shanghai 200233, China

Attn: Ms. Emiliana Zhou

Sample Disposition: Due to the destructive nature of the testing, all samples will be discarded at the conclusion of testing unless, the manufacturer specifically requests the return of the samples. The request for return must accompany the initial component shipment.

11.0 Manufacturing and Production Tests

The manufacturer agrees to conduct the following Manufacturing and Production Tests as specified:

Required Tests

Dielectric Voltage Withstand Test
Polarization Test

11.1 Dielectric Voltage Withstand Test

Method

One hundred percent of production of the products covered by this Report shall be subjected to a routine production line dielectric withstand test.

The test shall be conducted on products, which are fully assembled. Prior to applying the test potential, all switches, contactors, relays, etc., should be closed so that all primary circuits are energized by the test potential. If all primary circuits cannot be tested at one time, then separate applications of the test potential shall be made.

The test voltage specified below shall be applied between primary circuits and accessible dead-metal parts. The test voltage may be gradually increased to the specified value but must be maintained at the specified value for one second or one minute as required.

Test Equipment

The test equipment shall incorporate a transformer with an essentially sinusoidal output, a means to indicate the applied test potential, and an audible and/or visual indicator of dielectric breakdown.

The test equipment shall incorporate a voltmeter in the output circuit to indicate directly the applied test potential if the rated output of the test equipment is less than 500VA.

If the rated output of the test equipment is 500VA or more, the applied test potential may be indicated by either:

- 1 - a voltmeter in the primary circuit;
- 2 - a selector switch marked to indicate the test potential; or
- 3 - a marking in a readily visible location to indicate the test potential for test equipment having a single test potential output.

In cases 2 and 3, the test equipment shall include a lamp or other visual means to indicate that the test potential is present at the test equipment output. All test equipment shall be maintained in current calibration.

Products Requiring Dielectric Voltage Withstand Test:

Product	Test Voltage	Test Time
All products covered by this Report.	1000V	60 s
	or	
	1200V	1 s

11.2 Polarization Test

Method

As a routine production-line test, each appliance provided with a manually operated, line-connected, single-pole switch for appliance "on-off" operation; an Edison-base lamp holder or an Edison-base fuse holder; or a receptacle shall be tested for electrical continuity between the grounded supply circuit conductor of the attachment plug (wide blade of 2-wire plug) and the part of the appliance that is intended to be connected to the grounded supply circuit conductor of the attachment plug. The polarity shall be determined either visually or through the use of an electrical test. Equivalently, polarity may be verified between the ungrounded supply circuit conductor of the attachment plug and the part of the appliance that is intended to be connected to the ungrounded conductor.

Test Equipment

Any indicating device, such as an ohmmeter, a battery and buzzer combination, or the like, is to be used to determine compliance with the requirement.

Products Requiring Polarization Test :

All products covered by this Report.

12.0 Revision Summary				
The following changes are in compliance with the declaration of Section 8.1:				
Date/ Proj # Site ID	Project Handler/ Reviewer	Section	Item	Description of Change
9-Jan-2024	Mithril Yan	1	--	Update the standard from Electric Fans [UL 507:2017 Ed.10+R:22Jun2022]"" to "Electric Fans [UL 507:2017 Ed.10+R:24Aug2023]".
2312A0244C XI	Wayle Chen	2	--	Add eight new models of NDTFT21R, NDTFT21RH, NDTFT21RB, NDTFT21RBH, 5321, 5314H, 5312H and 5321H; also add the information related new added models.
		3	35	Add photo related optional bottom view for NDTFT4EM, NDTFT4EL.
		3	36, 37	Add photos related optional bottom view for NDTFT14RH, NDTFT14RL, NDTFT21R, NDTFT21RH, NDTFT21RB, NDTFT21RBH.
		3	38 to 57	Add photos related new added models.
		4	9, 10, 14, 15, 19, 22, 22a, 23, 24	Add information related new added models.
		4	15	Add rating of 2.5uF in Technical data.
		4	24	Add three new X2 capacitors: HD MKP (E227157), MPX (E356696), MKP (E483293)
		4	40 to 42	Add components related new added models.
		8	8.0 & 8.1	Add new test block and resigned.
8-Feb-2025	Mithril Yan	1	--	Update the standard from "Electric Fans [UL 507:2017 Ed.10+R:24Aug2023]" to "Electric Fans [UL 507:2017 Ed.10+R:22Aug2024]".
2411B1658C XI	Wayle Chen	2	--	Add five new brand names of "Electactic", "ZAFRO", "COWSAR", "KISSAIR" and "WAA"; Add three new models of NDTFT23R, NDTFT23RH and 5323; also add the information related new added models and brand names in Model Similarity.
	Mithril Yan	3	58 to 78	Add photos related new added models.
	Wayle Chen	4	9	Add an optional Fan motor 1: YSZ-45 GMDCT14DEG-16/NR (Ningbo Paniya).
		4	10	Add information related new added model of NDTFT23RH.
		4	14, 22a, 24, 41	Add information related new added models of NDTFT23R, NDTFT23RH and 5323
		4	22a	Add two optional Fuses 2: 932 (E300003), 5TE (E249609).
		4	24	Add two optional X2 capacitors 2: MKP (E334332), MPX (E488626).
		4	41	Add an optional Varistor: QNR-10D471K (E495834).
		4	43 to 49	Add components related new added model.
		5	9	Add Fan motor 1 of YSZ-45 GMDCT14DEG-16/NR in Critical Unlisted CEC Components list.

12.0 Revision Summary

The following changes are in compliance with the declaration of Section 8.1:

[illegible]