

SharkBite

Dual Shut-off

Controls and shuts off water flow to household plumbing fixtures. Independently shut off and run two supply lines from one stop valve.

Features and Benefits

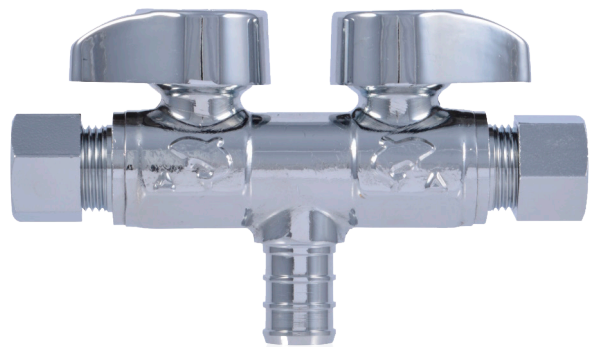
- Sleek chrome finish for an attractive appearance.
- Compatible with PEX and PE-RT pipe.
- Quarter-turn full-port brass ball valve.
- Made from lead-free DZR brass.
- Connects to PEX or PE-RT pipe with copper crimp rings or stainless steel clamps.
- Can be installed in wet lines.

Applications

- Potable Water Service.

Specification

Using PEX pipe cutters to cut the pipe to length, making sure that you have a good square cut. Slide the correct size Sharkbite clamp or crimp ring over the pipe approximately 2" past the end of the pipe. Push the pipe onto the Sharkbite barbed fitting until it touches the fitting shoulder. Position the clamp or crimp ring 1/8"-1/4" from the end of the tube. When making clamp connections, position the open jaws of the clamp tool over the raised tabs of the clamp ring and squeeze. Verify the connection is secure by visually checking the clamp tab. Make crimp connections by placing the jaws of the crimp tool over the copper crimp ring and squeezing until the jaws close completely. Verify that the connection is secure using the go / no-go gauge.



#UCDS12383Z

Specification Data

Performance

Minimum working temperature 33°F at 160 psi.
Maximum working temperature 200°F at 80 psi

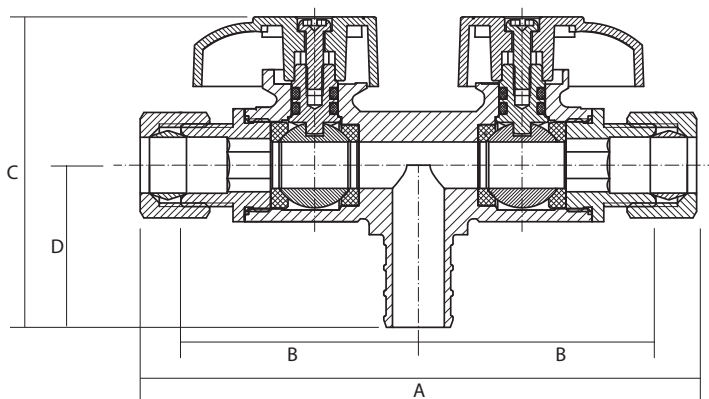
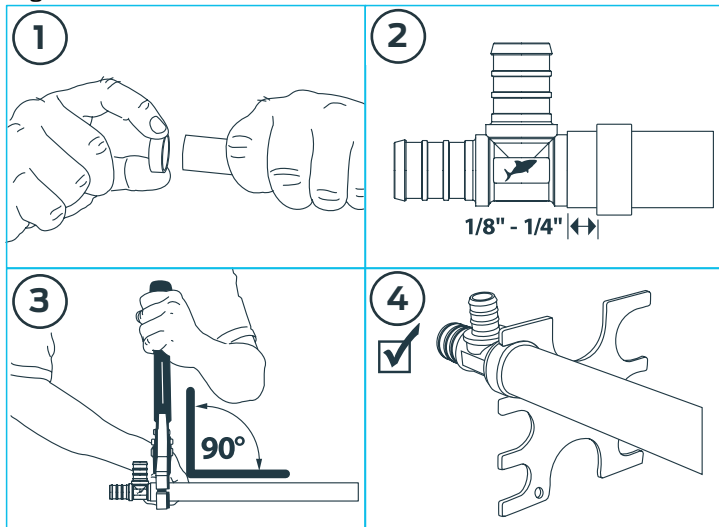
Materials

1	Valve Body	DZR LF Brass ¹
2	Seal Ring	PTFE
3	Ball	DZR LF Brass ¹
4	Bonnet	DZR LF Brass ¹
5	Stem	DZR LF Brass ¹
6	O-Ring	NBR
7	Gasket	PTFE
8	Handle	Steel
9	Nut	Steel
10	Cap	DZR LF Brass ¹
11	Washer	NBR

¹ Lead Free for all models, surfaces that are in contact with consumable water contain less than 0.25% lead by weight

Installation Requirements

1. Turn off water supply, and drain the line.
2. Cut PEX square or remove existing valve and disconnect supply line.
3. Slide crimp or clamp ring on to PEX.
4. Insert valve into PEX up to tube stop.
5. Position ring 1/8-in to 1/4-in from end of PEX Pipe.
6. Crimp/Clamp Ring onto PEX pipe.
7. Verify connection is secure. Use go/no-go gauge on crimp rings.



UCDS123838Z

Dimensions

Description	Part #	A	B	C	D
1/2" PEX X 3/8" Compression X 3/8" Compression	UCDS123838Z	3.78	3.07	2.11	1.10

All measurements are displayed in inches
+/-0.063

Pipe Type

PEX pipe complying with ASTM F 876 and CSA B137.5, and PE-RT pipe complying with ASTM F2769.

Fitting Reuse

SharkBite fittings can be reused for testing purposes but any fitting used repeatedly for testing should not be used in a permanent installation.

Codes and Standards

ASME A112.4.14/CSA B125.14

NSF/ANSI 14

IAPMO/ANSI Z1157

NSF/ANSI/CAN 61

NSF/ANSI/CAN 372

