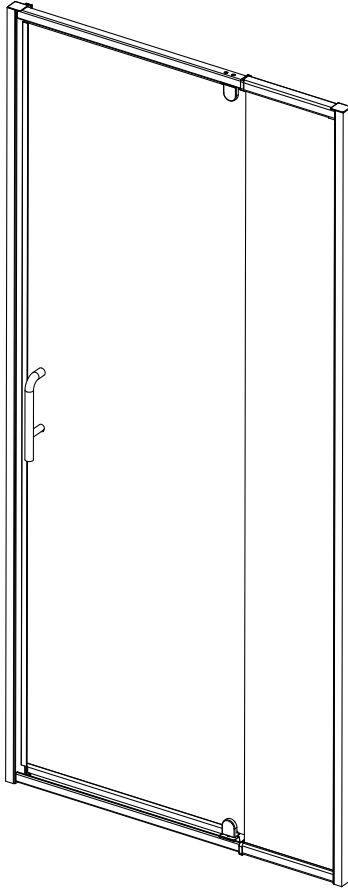


Pivot Shower Door INSTALLATION MANUAL



Scan the QR code to
watch the installation video

CONTACT US

Thank you for purchasing our products!

We're delighted to enhance your living space with our offerings. If you encounter any issues or have questions during installation or usage, don't hesitate to reach out. Our dedicated support team is available 24/7 to assist you and ensure your complete satisfaction.

✉ Email: BM@ZRSupport.com ☎ Phone: 1 - 888 - 204 - 3326

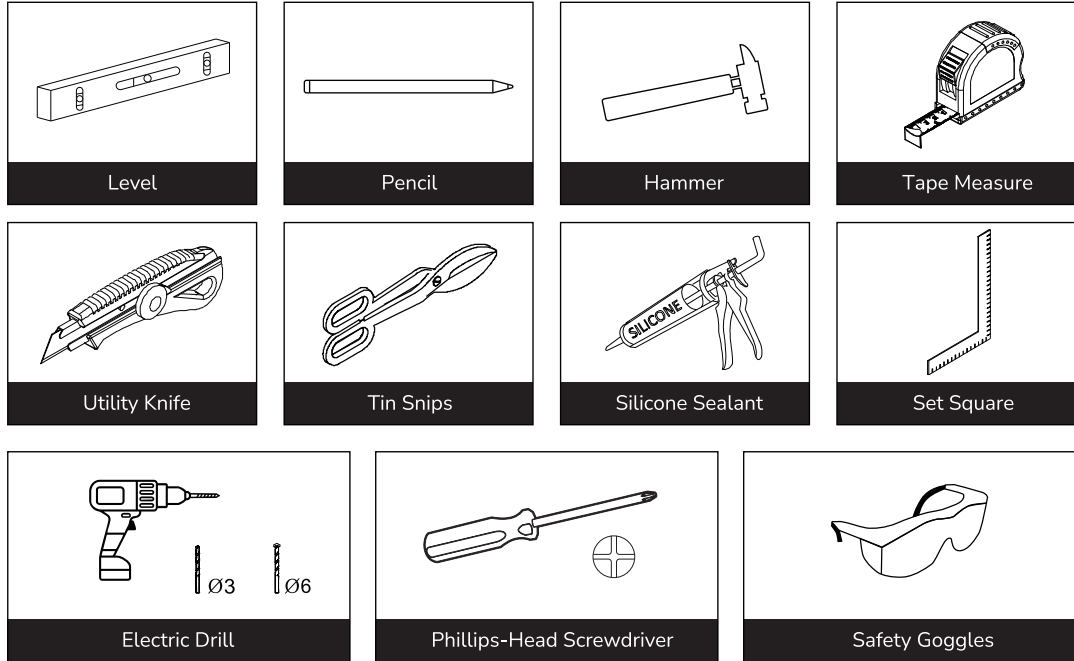
📘 Online Support: ZRSupport

★ IMPORTANT SAFETY NOTICE

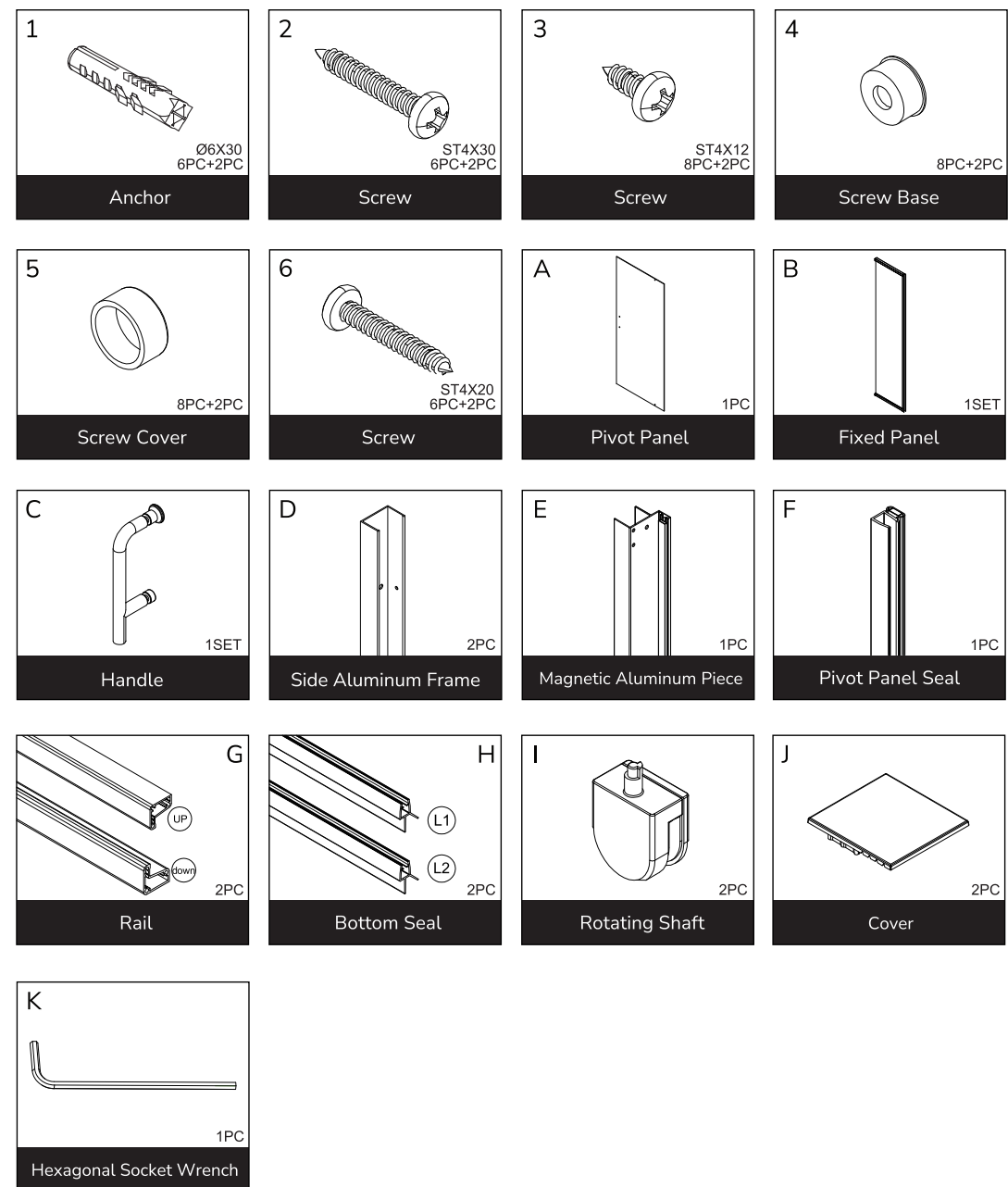
Before you start the installation, take the time to read these instructions thoroughly.

- When drilling into walls, exercise extreme caution to avoid hitting any hidden pipes or electrical wires.
- Remember, due to its weight, it's best to have two people for the installation process.
- Risk of serious injury. Do not cut tempered glass. Tempered glass will shatter if cut.
- Risk of serious injury. Always wear safety glasses while cutting and drilling.
- Risk of personal injury. Tempered glass should not contact hard surfaces or the glass may shatter. Do not touch the edge of the tempered glass panel with tools or any hard objects.
- Identify all parts before installation. Inspect for damage.
- Follow the instructions applying 100% silicone sealant for the door. Sealing areas other than those shown in the installation instructions may cause leaking.

TOOLS REQUIRED

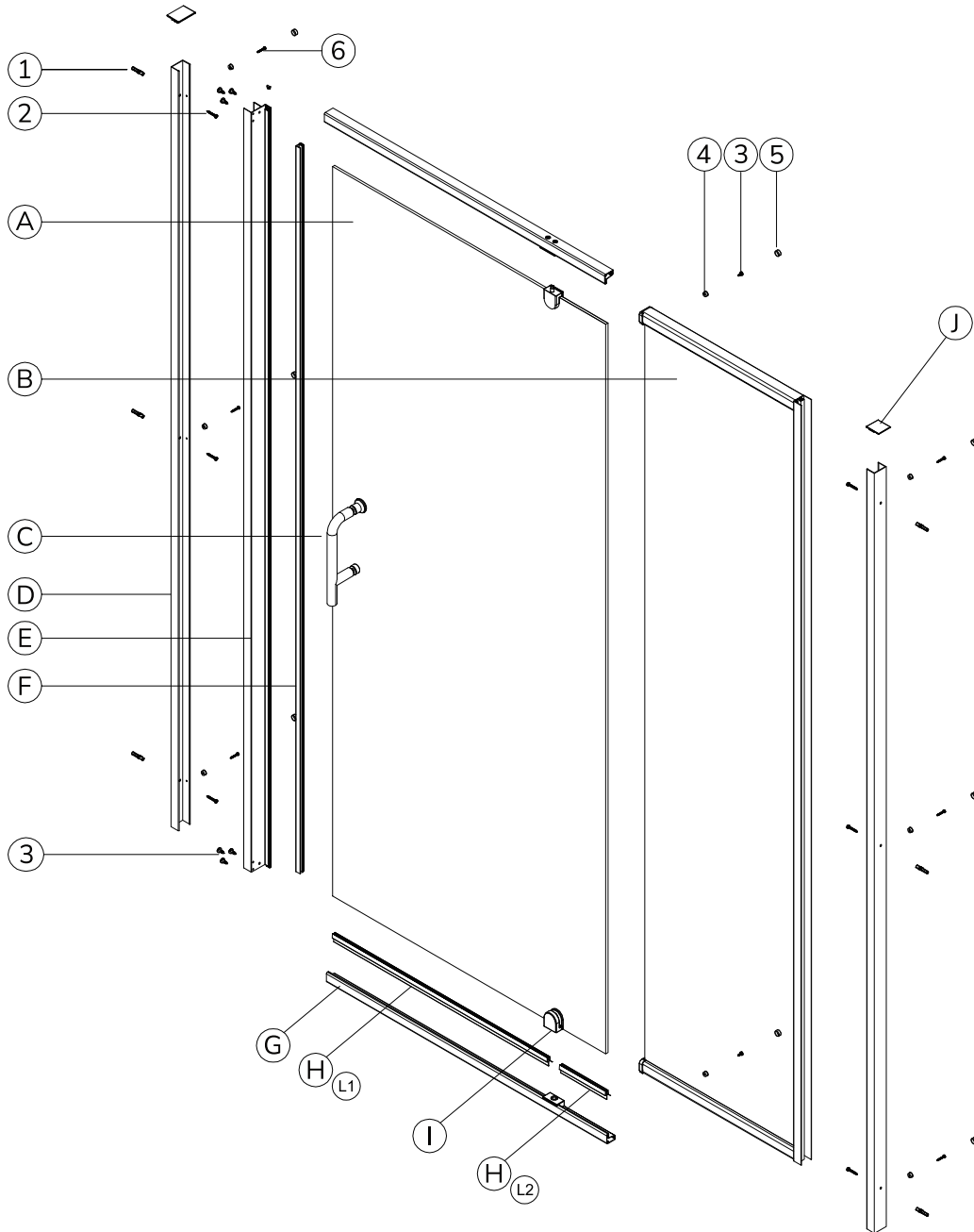


ACCESSORIES LIST



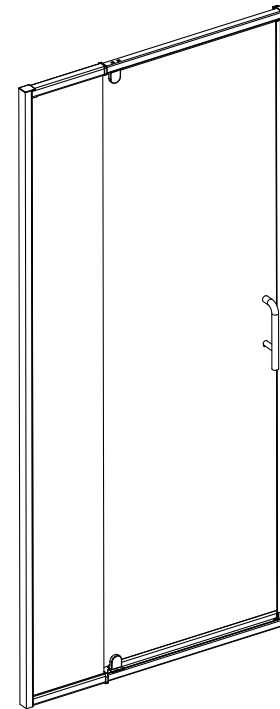
If you encounter any problems, feel free to drop us an email at
BM@ZRSupport.com

ASSEMBLY DRAWING

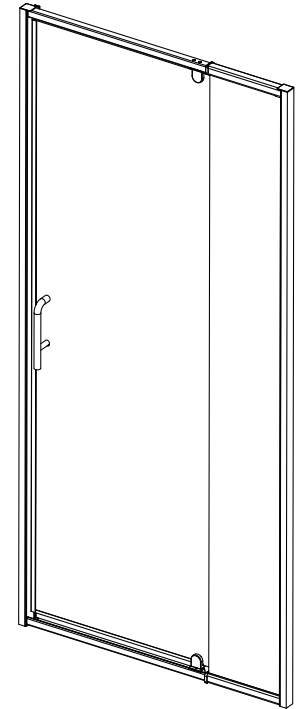


4

Before your start



Left Pivot



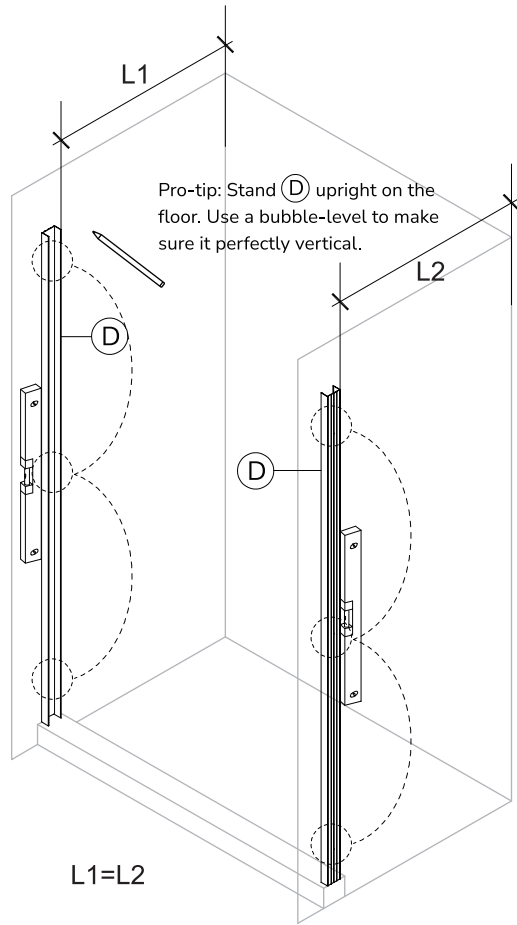
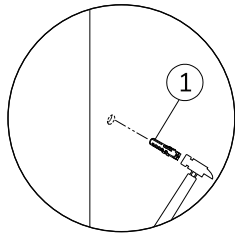
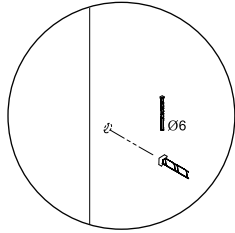
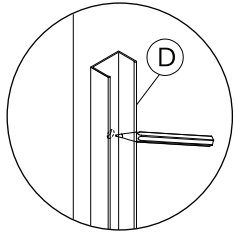
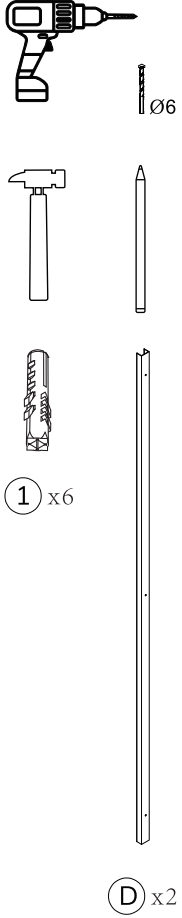
Right Pivot

IMPORTANT! Right-Pivot configuration is shown in the installation steps unless otherwise indicated.

- Determine whether the door will be installed in a Right-Open or Left-Open configuration.
- Install the pivot panel on the same side of the shower as the showerhead.
- The fixed panel will be the furthest panel from the showerhead.

5

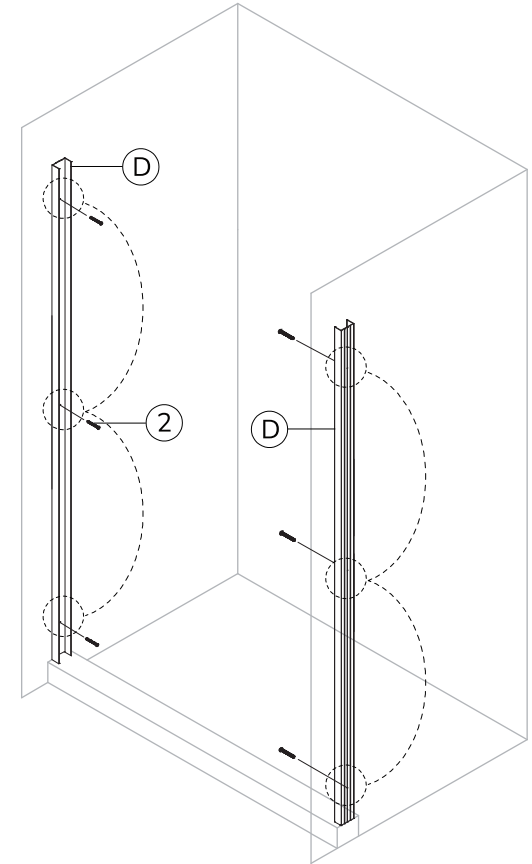
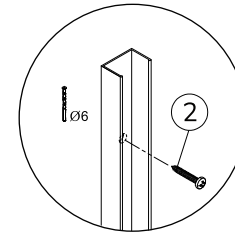
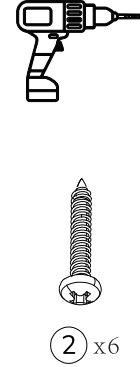
1



Trace the positions of the holes with a pencil. With an electric drill, drill three holes (top, middle, and bottom) in the wall, insert the anchors (1) into the wall holes.

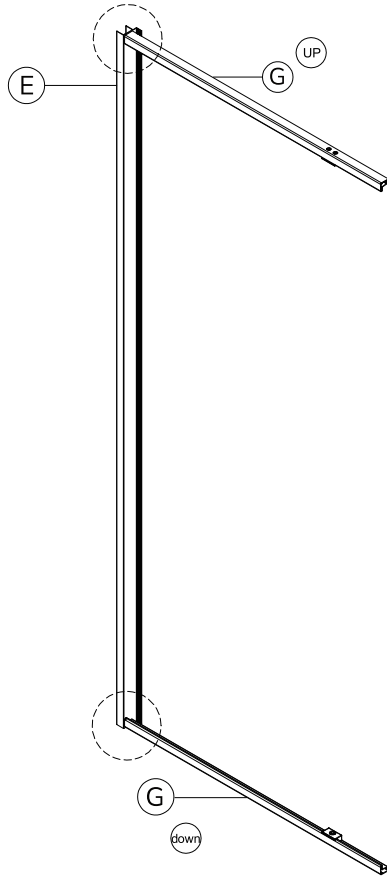
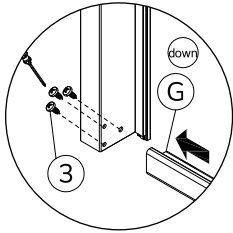
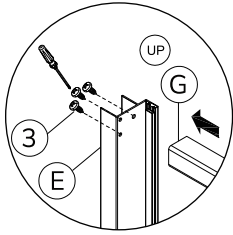
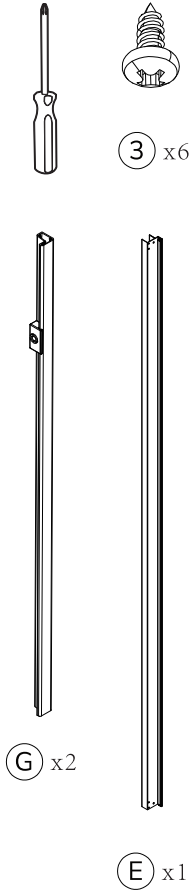
Tip: Be sure all pilot holes are the correct size. Always use low torque and steady pressure when securing stainless steel screws to avoid stripping or breaking off the screw heads.

2



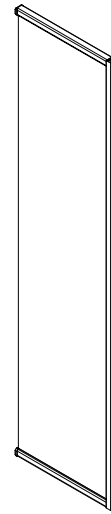
Use an electric drill to fix (D) on the wall with Screw (2).

3

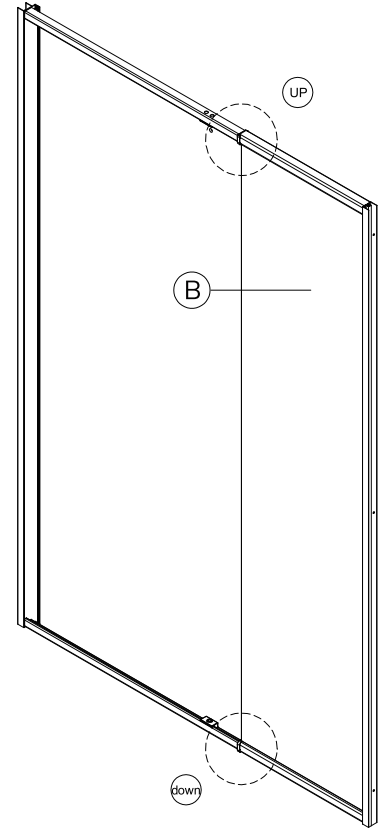
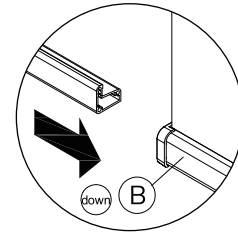
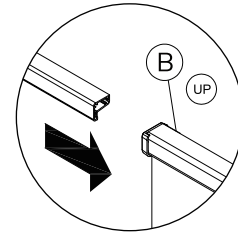


Fix rali ⓐ and magnetic aluminum piece ⓔ together with screws ③.

4

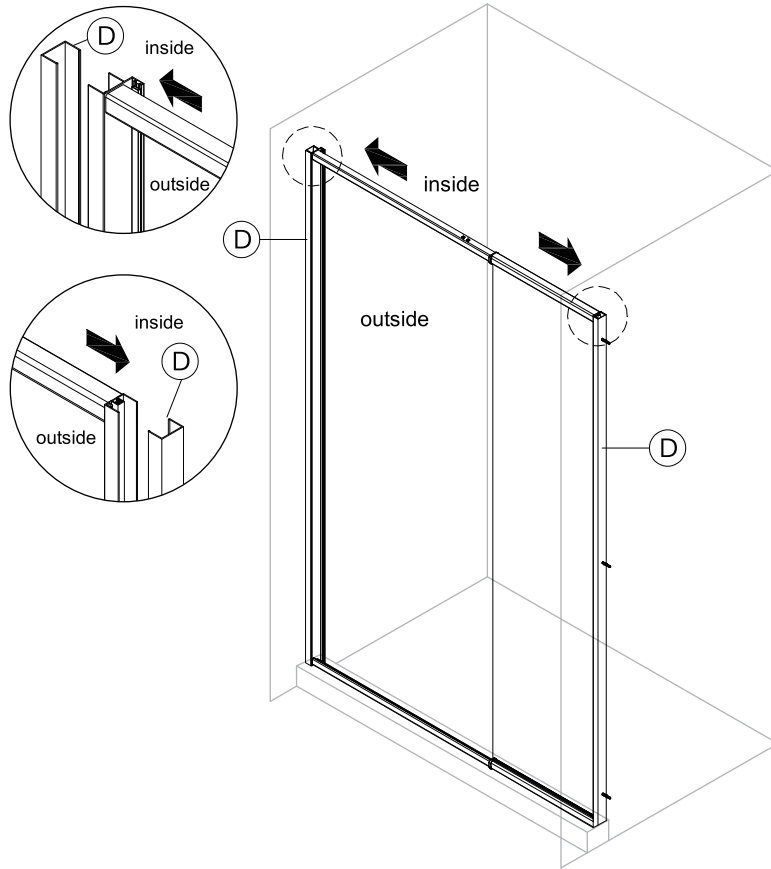


ⓑ x1



Connect the frame installed in Step 3 to fixed panel ⓑ.

5

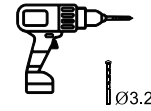


Insert frame into the side aluminum frame (D).

Note:

1. Determine whether to place the fixed glass on the left or right side based on the chosen door opening direction.
2. The frame needs to pay attention to the inward and outward directions.

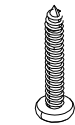
6



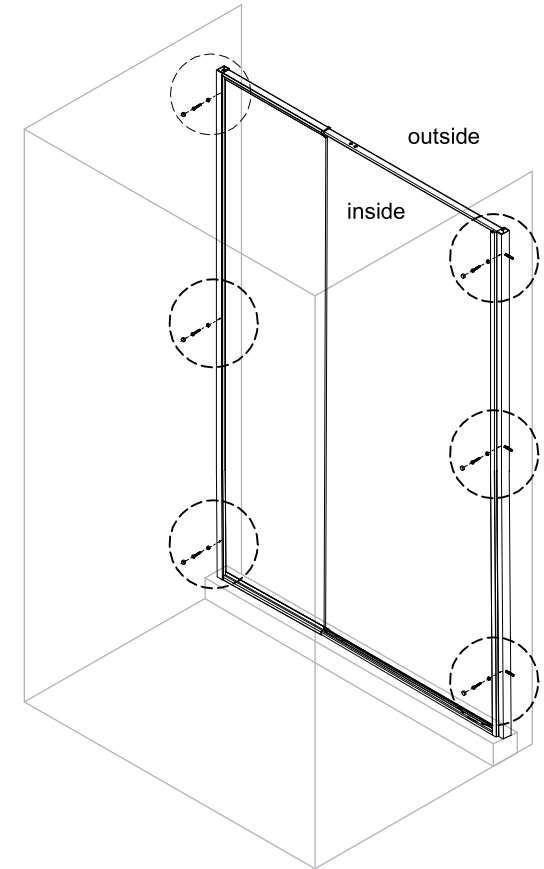
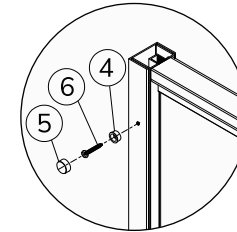
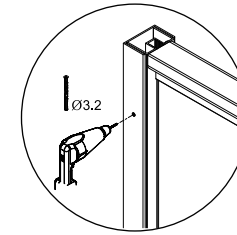
(4) x6



(5) x6



(6) x6



Drill holes and fasten frame to the side aluminum frame (D).

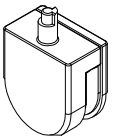
7



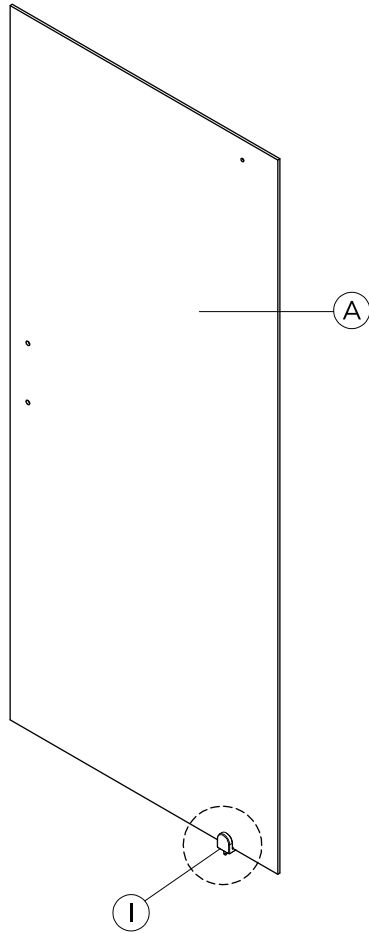
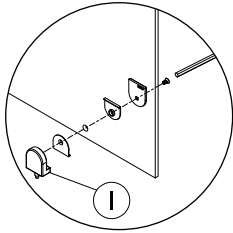
J



A x1



I x1



Assemble the hinge I in the order shown in the picture, then fix the hinge to the pivot panel A with screw.

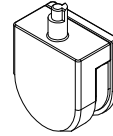


Note:
The side with the label has an easy-to-clean coating and should face the inside of the shower.

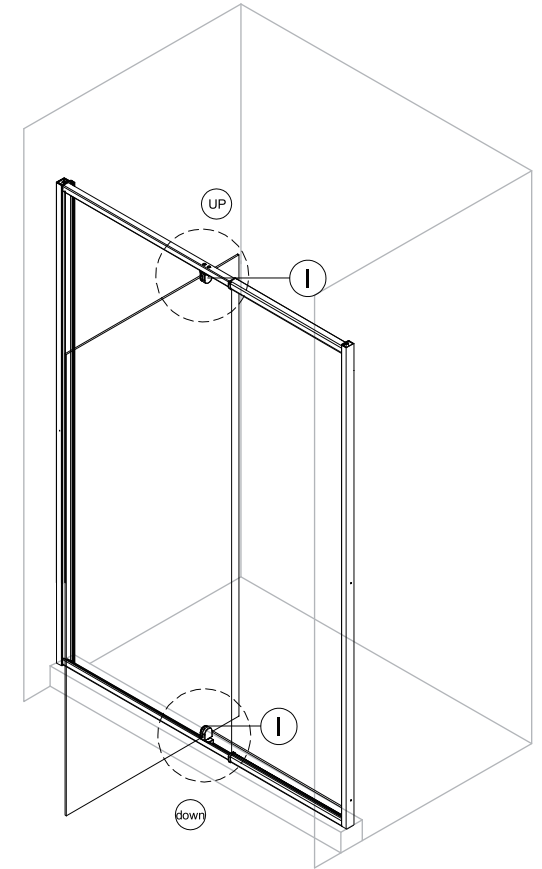
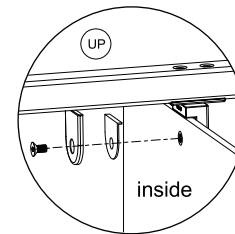
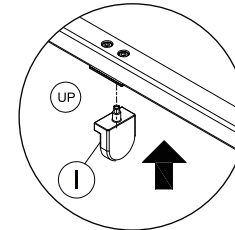
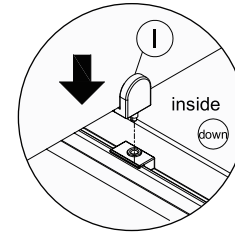
8



J

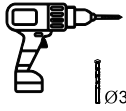


I x1



Place the down hinge I into the hinge base, then assemble the up hinge I in the order shown in the picture.

9



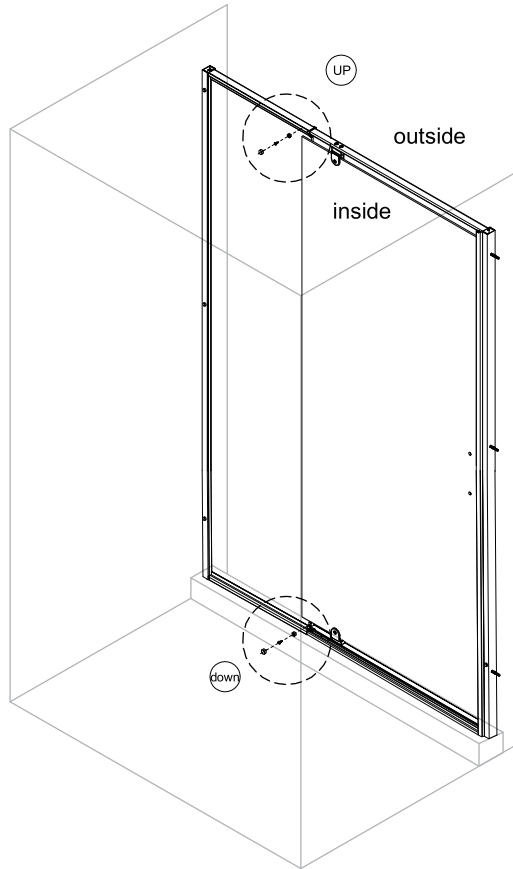
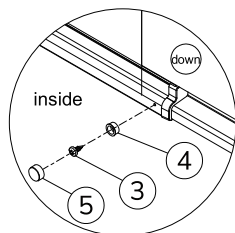
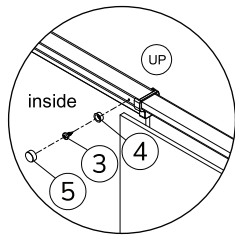
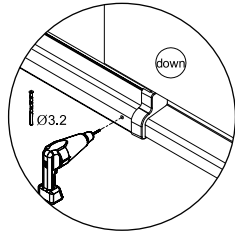
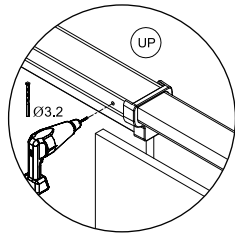
4 x2



5 x2

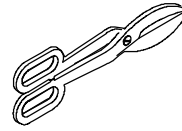


3 x2

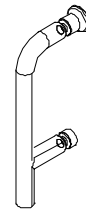


Drill pilot holes and fasten screws to rail.

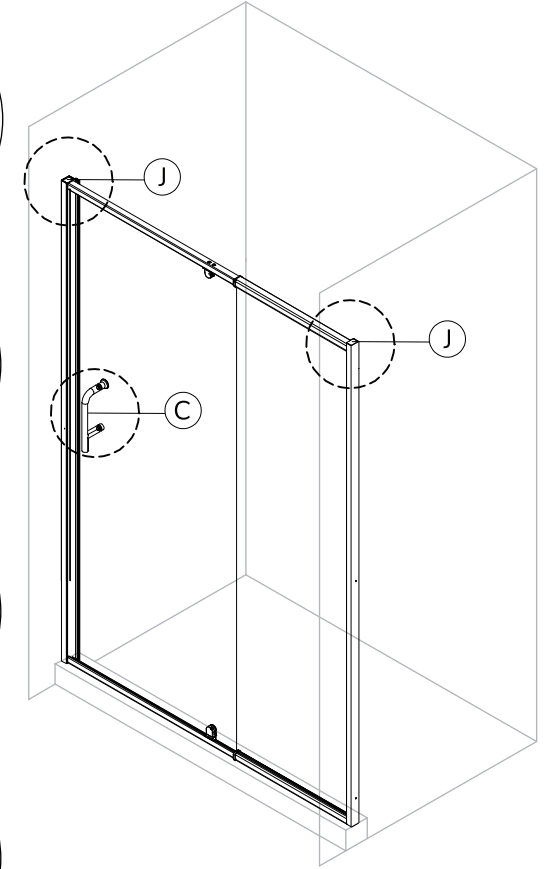
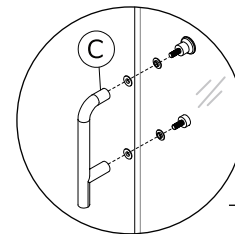
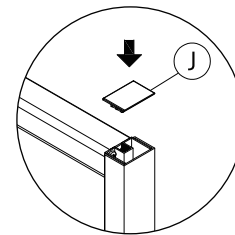
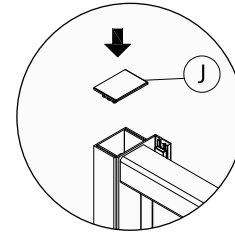
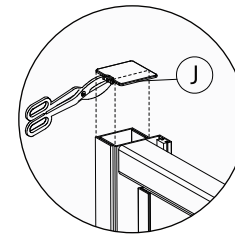
10



J x2

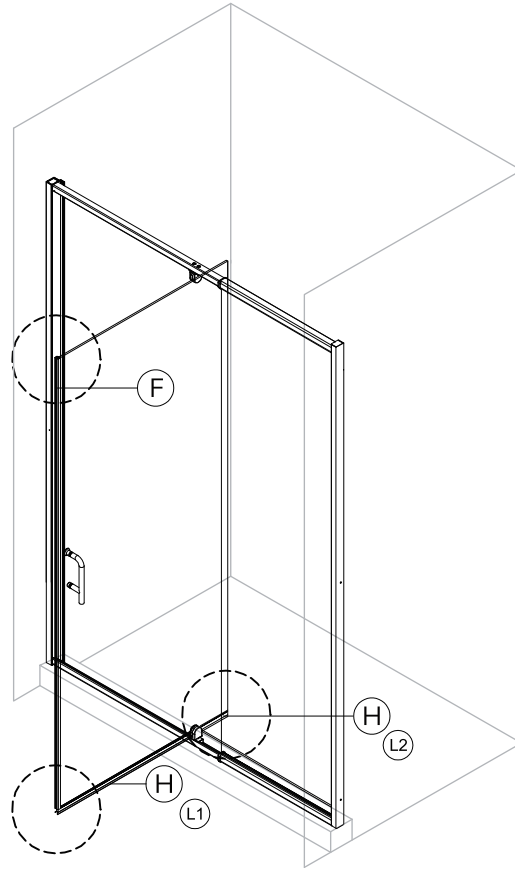
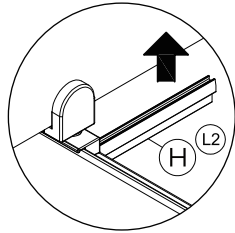
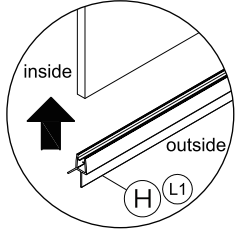
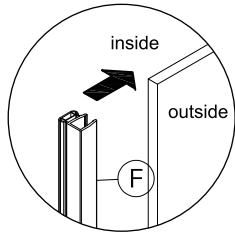
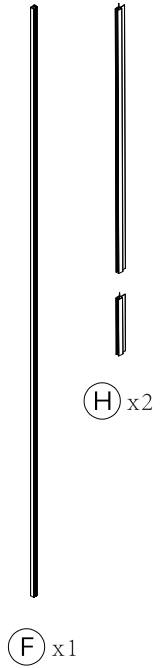


C x1



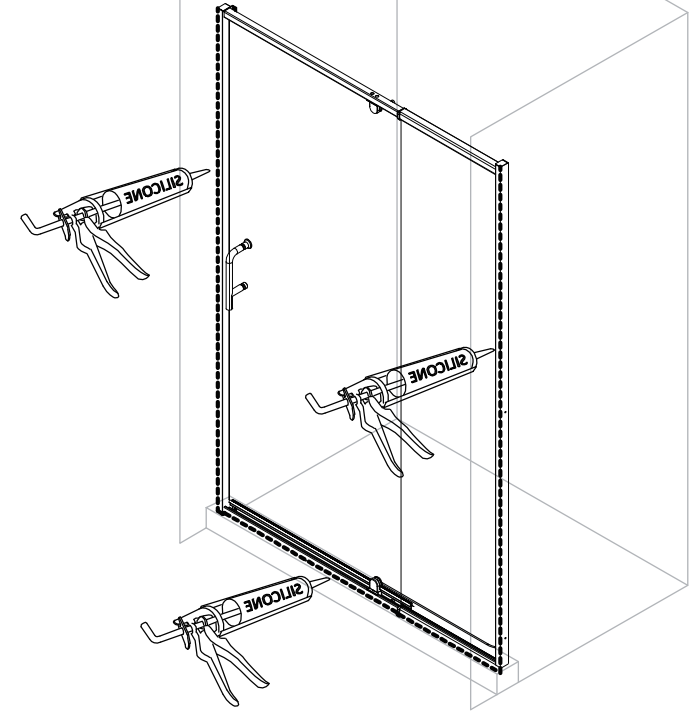
Cut cover J into a suitable size and install it. Install the door handle C following standard fastening procedures.

11



Install the bottom water strip (H) on the lower side of the glass door.
Install magnetic strip (F) on the glass door.

12



Apply a bead of silicone sealant along the left, right, and bottom edges of the door. Let it cure for 24 hours. During this time, refrain from using the showerhead.

★ **Contact Email**

If you have any questions, please feel free to contact us via
BM@ZRsupport.com



Scan the QR code to
watch the installation video