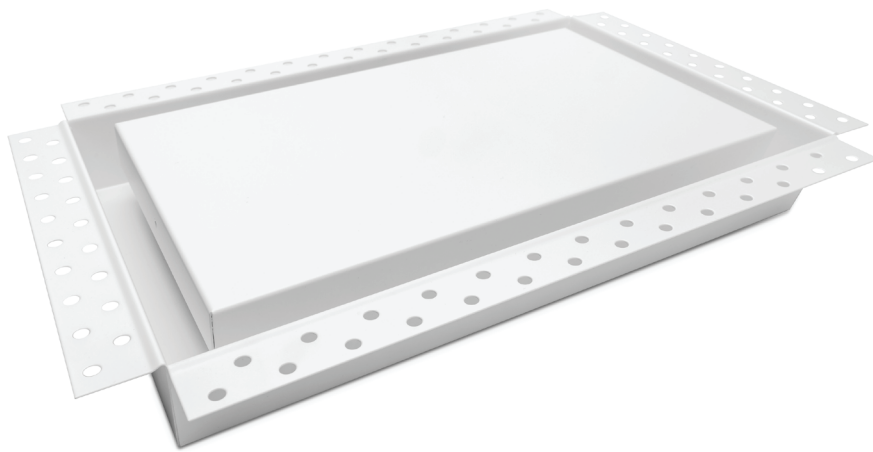


Drywall Pro X [exhaust fan]



The X Factor

This is the end to ugly exhaust fans getting in the way of your bathroom feng shui. Like our other Drywall Pro models, this guy has a drywall bead rim that gets mounted and mudded right into the drywall surface.

The Drywall Pro X is designed for retrofit exhaust fans. This is only a cover, ventilation fans must be purchased separately. We made it to be compatible with specific exhaust fan models and sizes.

This is a big detail that packs a “wow!” Bye bye bulging, grille exhaust covers, it was nice knowing you. See ya never.



Above: bottom view of painted finish, installed Drywall Pro X. Center piece can be removed to access ventilation motor



Top: installation process - mudded base piece of the Drywall Pro X
Bottom: "before" view of cumbersome traditional exhaust fan cover

Applications

- For ceiling ventilation fans on drywall surfaces. Requires additional ventilation fan. This is only the fan cover.
- Customize inner plate. Can be painted or finished with wallpaper.

Features

- **Size:** Overall size is 14" x 14".
*Requires extra 1 3/4" space in ceiling cavity.
- **Noise:** Average 3 DB noise reduction.

Compatible Fans

- **Retrofit:** Only compatible with retrofit exhaust fans that require a drywall opening between 8" x 8" to 10 1/2" x 10 1/2"
- **Compatible Fan Models:**
Panasonic: WhisperCeiling™, WhisperFit®, WhisperGreen Select™
Broan-NuTone: Model EZ80NC