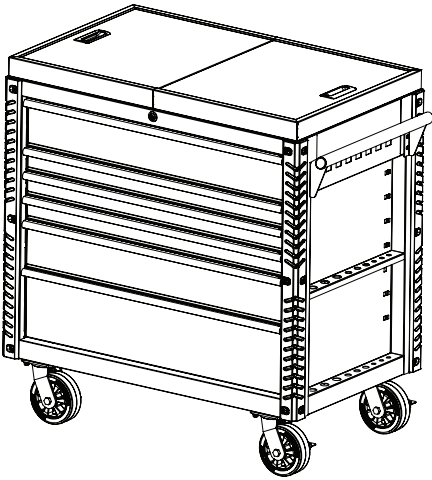
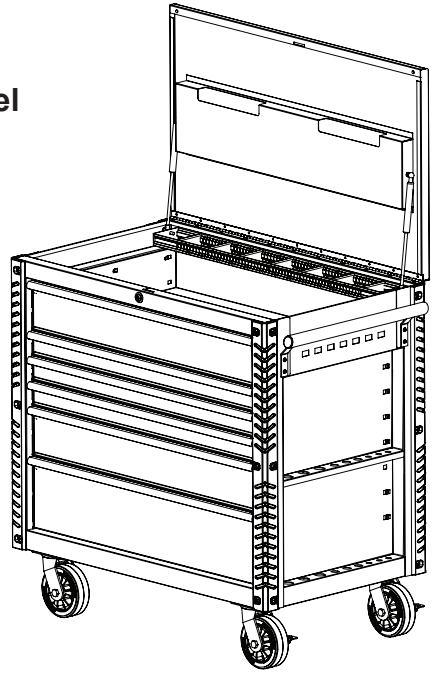




**41 inch Powder Coated Steel
Tool Carts**



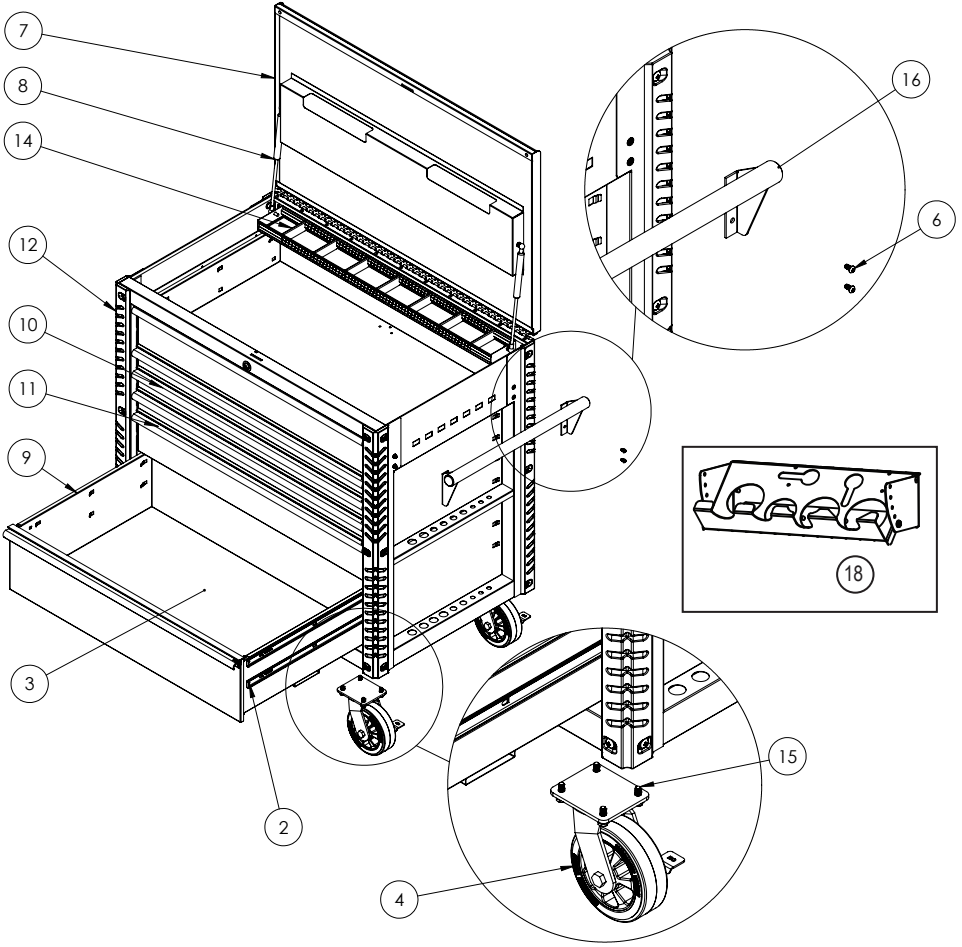
**Model: EX4106TCS
41" 6 Drawer Sliding Top Tool
Cart with Bumpers**



**Model: EX4106TC
41" 6 Drawer Flip Top Tool
Cart with Bumpers**

Extreme Tools, Inc.
740 Frontenac Road
Naperville, Illinois 60563
630.369.9303
www.ExtremeTools.net

Tool Cart with Flip Top Parts List EX4106TC



Tool Cart with Flip Top Parts List

EX4106TC

Item	Part Number	Description	Qty
2	SW-100LB-3045B (OL)	Outer Slide - 100lbs, 21.2"	9
3	Z-DL4125TC	Drawer Liner	6
4	Z-CA6SB(CRS)	6X2 Chrome Mag wheel swivel w brake, NO LOGO	2
17	Z-CA6R(CR)	6X2 Chrome Mag Caster (Rigid)	2
5	Z-PR.188	3/16" SS Pop Rivet - Hinge Used	8
6	Z-SCM6-12MM	M6-1.0x12 Socket Head Screw & Washer	4
7	EX4125TC-40R	Lid Assy - TC	1
8	Gas Strut (350m-13.78)	Gas Strut, 350L-110-350N	2
9	DR3-4125TC	Drawer Assy 3	1
10	DR1-4125TC	Drawer Assy 1	3
11	DR2-4125TC	Drawer Assy 2	2
12	Z-TCBMPR-SC	Tool Cart Corner Bumpers	4
13	Z-LK + code	Lock & Key - see Lock Face or Key for Code	1 set
14	EX4125TC-27	Parts Tray Divider	8
15	Z-BTM10-25MM	M10x25mm Hex Bolt	16
16	Z-HNDL4106RC	Side Handle - 4106TC	1
not shown	Z-LGS	Extreme Tools® name plate	1
18	ACPTR	Adjustable Power Tool Rack Accessory	1

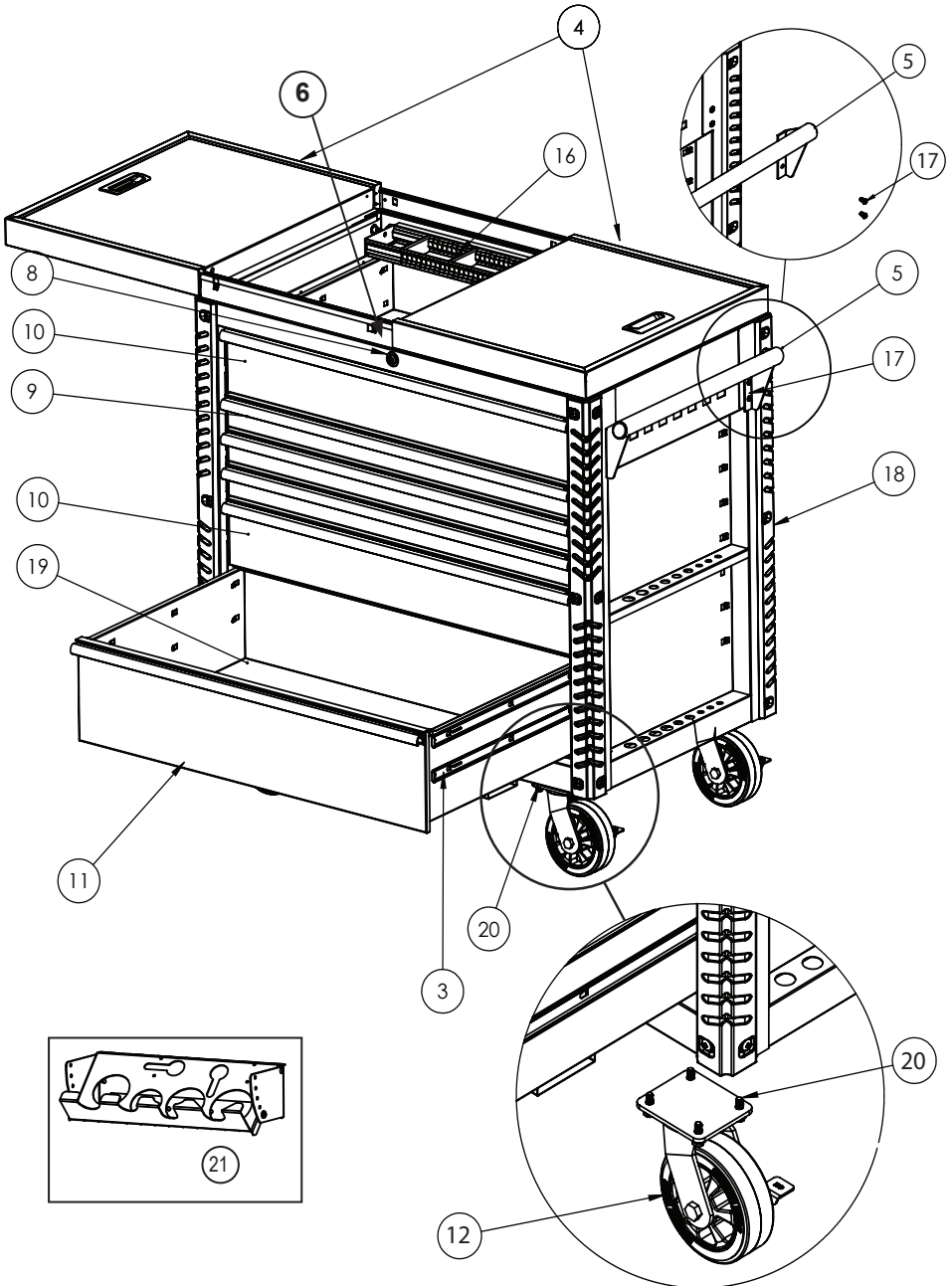


Replacement keys may be ordered using the code that appears on the face of the lock.

To order replacement parts, have the part number, tool box color and quantity ready. If under warranty, the serial number is REQUIRED to get replacement parts.

Not all parts are available under warranty and may be purchased separately.

Tool Cart with Sliding Top Parts List EX4106TCS



Tool Cart with Sliding Top Parts List

EX4106TCS

Item	Part Number	Description	Qty
3	SW-100LB-3045B Set (OL)	100 lbs., 21.2" BB Slide (Set)	9
4	EX4125TC-38STA	Sliding Lid-Tray Assembly-RH	2
5	Z-HNDL4125TC	SS Tubular Side Handle - 4106TC	1
8	Z-LK + code	Lock & Key - see Lock Face or Key for Code	1 set
9	DR1-4125TC	Drawer Assy 1	3
10	DR2-4125TC	Drawer Assy 2	2
11	DR3-4125TC	Drawer Assy 3	1
12	Z-CA6SB(CRS)	6X2 Chrome Mag wheel swivel w brake	2
16	EX4125TC-27	Parts Tray Divider	8
17	Z-SCM6-12MM	M6-1.0x12 Socket Head Screw & Washer	4
18	Z-TCBMPR-SC	Tool Cart Corner Bumpers	4
19	Z-DL4125TC	PVC Drawer Liner	6
20	Z-BTM10-25MM	M10x25mm Hex Bolt	16
not shown	Z-CA6R(CR)	6X2 Chrome Mag Caster (Rigid)	2
not shown	Z-LGS	Extreme Tools® name plate	1
21	ACPTR	Adjustable Power Tool Rack Accessory	1



Replacement keys may be ordered using the code that appears on the face of the lock.

To order replacement parts, have the part number, tool box color and quantity ready. If under warranty, the serial number is REQUIRED to get replacement parts.

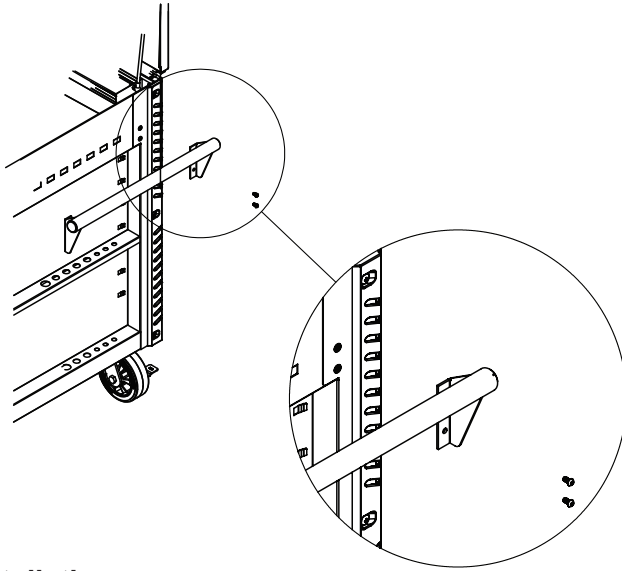
Not all parts are available under warranty and may be purchased separately.

ASSEMBLY

Handle Installation

NOTE: Install the handle first to make it easier to move the tool cabinet.

Position the handle over the holes in the cabinet and attach with the provided (4) M6 Socket Head Screws. Tighten securely.



Caster Installation

NOTE: Lock the lid / sliding top and drawers **BEFORE** proceeding!

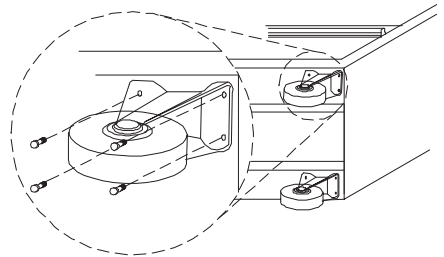
Tool Cart is heavy. Installation requires assistance of another adult to complete this step.

With assistance, carefully lay the cabinet on its back onto a soft surface such as a mat to protect the cabinet finish.

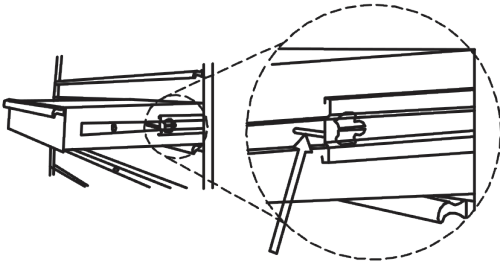
Position each swivel casters on the bottom of the cabinet on the same side as the side handle.

Use (4) M10 hex bolts to install each caster. (Please note: M10 hex bolts have built-in washers and do not require an additional washers.) Insert M10 Hex Bolts through the bottom of the caster and then insert the end of the bolts into the holes in the bottom of the Cabinet. Tighten all 4 bolts securely. **LOCK CASTER!**

Repeat instructions above for installing all casters. **LOCK ALL CASTERS BEFORE** lifting cart to upright position!



OPERATING PROCEDURE

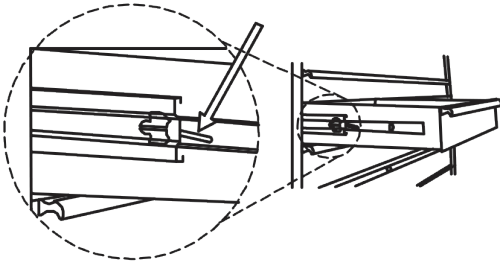


Drawer Removal

Pull drawer out so that it is almost fully extended.

Push up on the black lever on one drawer slide and at the same time push down on the lever on the other side.

With the levers in these positions, pull the drawer out until it releases from the drawer slides.



Drawer Replacement

Extend the drawer slides.

Careful align the brackets on the sides of the drawers with the slots of the cabinet slides. Insert the brackets on the side of each drawer into the slots of the cabinet slides.

Once properly inserted, completely close the drawer to set the slides into their properly functioning positions.

MAINTENANCE

Lubricate the casters once a year with high quality ball bearing grease.

Lubricate the slides twice a year with high quality, petroleum-based lubricant. This may be required more often if operating the tool box in colder climates.

Use mild detergent and water to clean drawer fronts, drawer trim and other surfaces.

Grease and oil can be removed with standard, non-abrasive, non-flammable cleaning products.

Auto wax will help preserve the unit's high gloss finish. Follow directions as provided.

SAFETY



WARNING

Do not attempt to lift the cabinet by its side handle using chains, ropes or lifting device. Side handle may fail resulting in personal injury or damage to the product!
Use a forklift or similar lifting device with forks placed under the bottom of the tool box to move if tool box cannot be moved by two people.

CLOSE THE DRAWERS AND LOCK THE TOOL BOX BEFORE MOVING THIS PRODUCT!

If drawers are not locked they could open and make the product unstable and tip which may cause personal injury or damage to the product.

Do NOT stand on this product or lean on the drawer or work top.

Wear safety glasses when removing or repositioning the slides. The tool box could slip resulting in personal injury.

Do NOT mount this product on a truck bed or other moving object. This may cause personal injury or product damage. Mounting this product on any surface will void the warranty.

Do NOT tow with power equipment. The product could tip which may cause personal injury or product damage.

Do NOT alter this product in any manner or attach electrical equipment. This may cause personal injury or product damage and will void the warranty.



CAUTION - IMPORTANT PRODUCT INFORMATION

DRAWERS MUST BE CLOSED AND TOOL BOX LOCKED USING KEYS BEFORE MOVING!

The maximum weight for each drawer should not exceed 100 lbs. (45 kg) for single slides and 200 lbs. (90 kg) for drawers with double slides.

Maximum overall weight should not exceed 1,500 lbs. (680 kg.)

Use caution when closing the chest lid/sliding top. Remove hands from the area before closing to prevent personal injury.

Do NOT pull this product. Push the product to prevent personal injury.

ENGAGE THE BRAKES when not moving this product. Locked casters prevent the product from rolling which may result in personal injury or damage to the product.

This product may become unstable and tip if more than one drawer is open at a time. To prevent personal injury or damage to product, OPEN ONLY ONE DRAWER AT A TIME.

Lock product and properly secure before moving with a forklift or other device.

Keep the product on a level surface. The product could become unstable and tip if stored or moved on an uneven surface which may result in personal injury or product damage.