

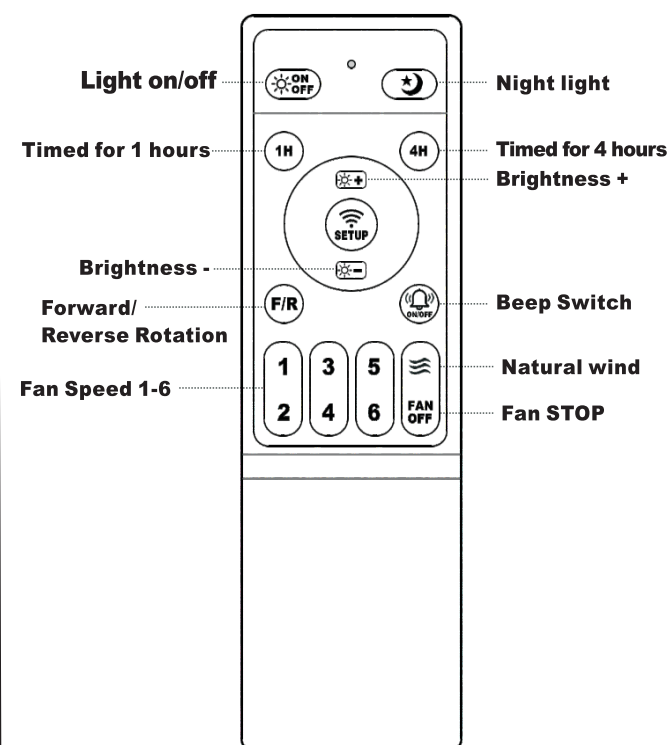
## Troubleshooting

PROBLEM	CORRECTIVE ACTION
<b>The fan does not move.</b> (If connecting the fan to your wall switch)	<ol style="list-style-type: none"> <li>1. Ensure your wall switch is turned on.</li> <li>2. Ensure the wall switch and breaker box is energized successfully.</li> <li>3. Turn the power off and ensure all wire connections at the ceiling outlet box is correct.</li> <li>4. If necessary, please replace the remote control batteries. Or re-synchronize the transmitter and receiver: Press and hold the "SETUP" button of the remote control after the fan is powered on within 5 seconds, until the remote control light flashes.</li> </ol>
<b>The fan does not move.</b> (If connecting the fan without your wall switch)	<ol style="list-style-type: none"> <li>1. Ensure the wire is energized successfully. (Please be safe)</li> <li>2. Turn the power off and ensure all wire connections at the ceiling outlet box is correct.</li> <li>3. If necessary, please replace the remote control batteries. Or re-synchronize the transmitter and receiver: Press and hold the "SETUP" button of the remote control after the fan is powered on within 5 seconds, until the remote control light flashes.</li> </ol>
<b>The fan is noisy</b>	Ensure the mounting bracket is securely mounted to the outlet.
<b>Only Fan or Lights operate correctly</b>	<ol style="list-style-type: none"> <li>1. Fan works but lights not: If your bulbs work, but not on this lamp, please pull the copper piece inside the bulb holders slightly. This operation is to ensure that the bulbs make good contact with the copper in the bulb sockets.</li> <li>2. Lights work but fan not: Please check if the wire inside the fan light is loose, the wire of the fan motor is connected with a male and female plug, please also pull it out and reconnect it.</li> </ol>
<b>Fan turns but the airflow is inadequate</b>	<ol style="list-style-type: none"> <li>1. The fan may be running in reverse, so air is going upward.</li> <li>2. The room may contain items that obstruct the airflow.</li> <li>3. The fan may be too small for size of the room.</li> </ol>

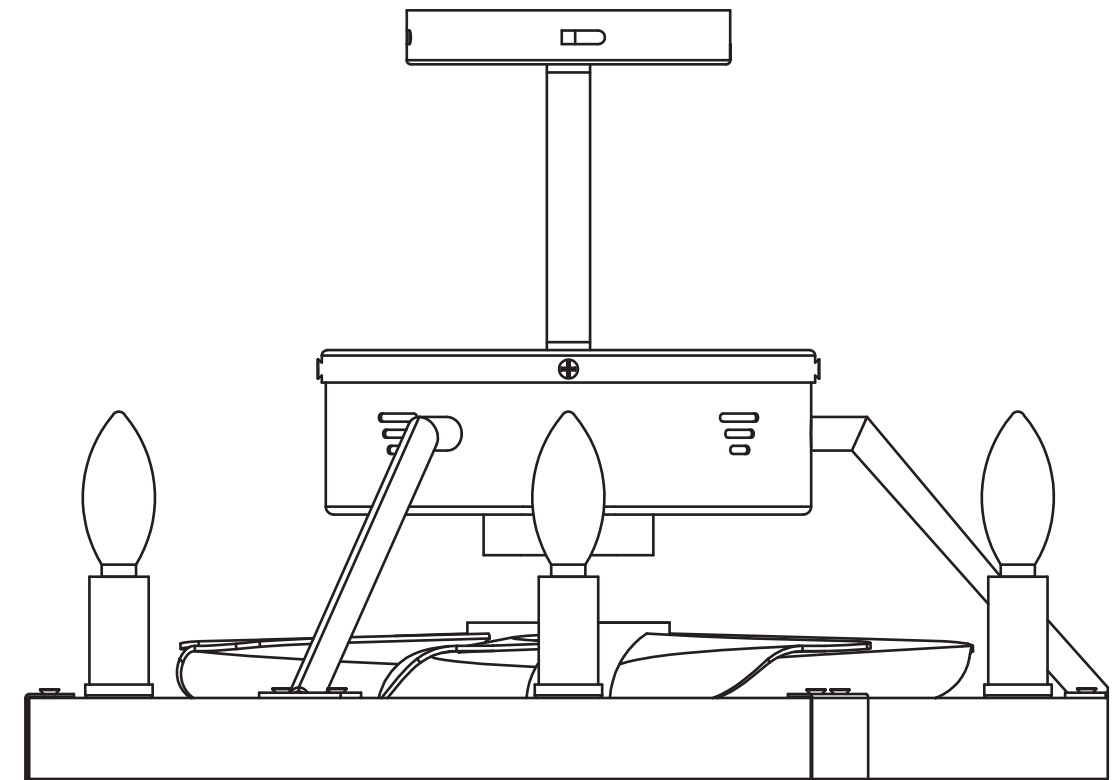
## Remote Control(Emitter)Operation

If emitter can not control the fan:

1. If the ceiling fan is connected to your wall switch, please ensure the switch keeping on first.
2. Please check whether the batteries are installed correctly and whether they are charged. If necessary, replace the remote control batteries.
3. Please check if there are similar remote control products working nearby, because remote control products of the same frequency will interfere with each other.



## Fan Lamp Installation Guide



**230507B1**

Much appreciated for choosing our fan to be with you in your home, you will not regret it. This installation and operation manual contains complete instructions for installing and operating the fan. If you still need help, please feel free to contact us via Amazon Message

# Safety Precautions

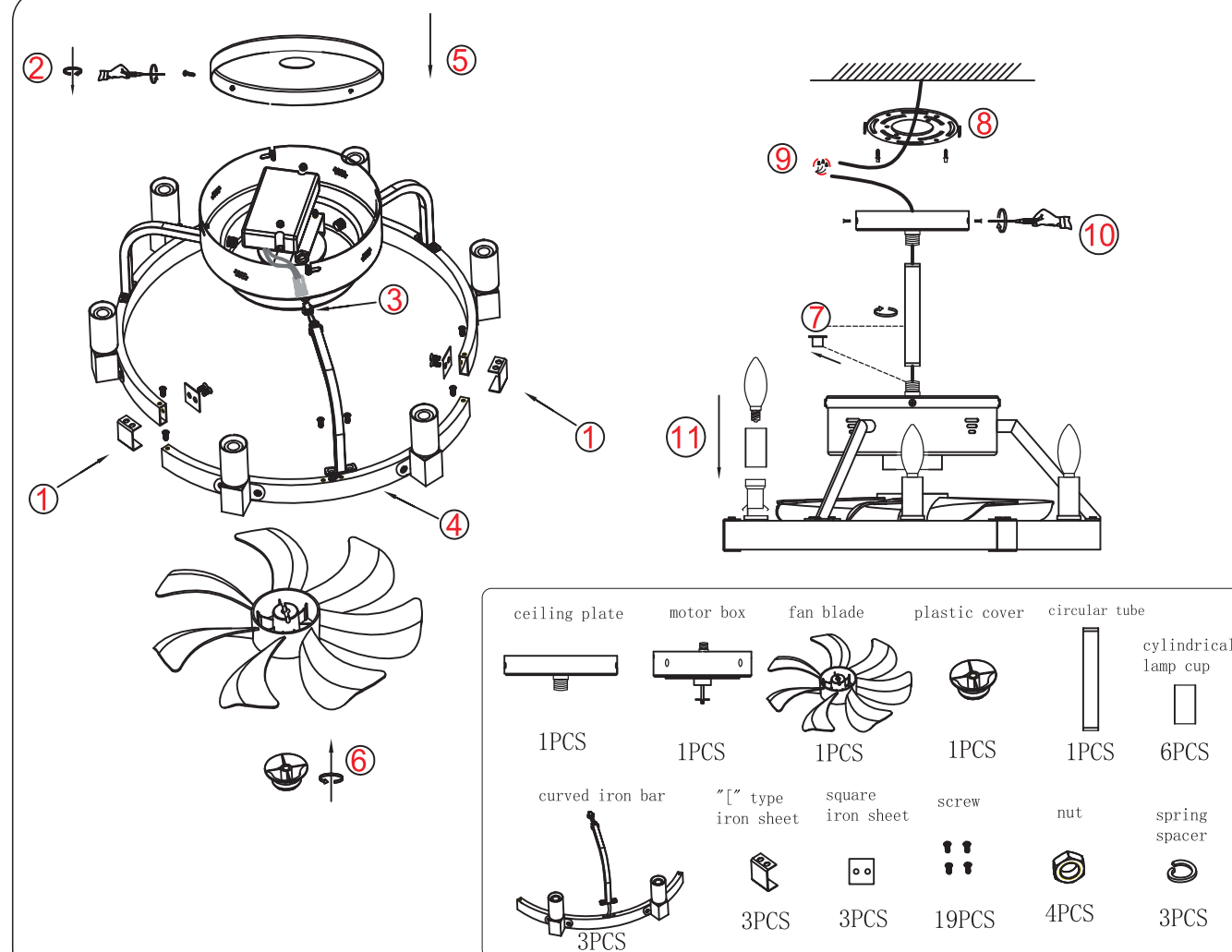
The information contained in the following pages has been prepared to ensure your maximum enjoyment of your fan. Please remove the fuse or turn off the circuit breaker to cut off the power before installing the fan. Ensure all electrical connections are in compliance with local laws, regulations and national electrical codes. If you are not familiar with electrical installation and wiring, please hire a qualified electrician or consult the wiring manual:

1. The anchor point for the fan must be able to support a weight of at least 66 lb. If mounting on a ceiling junction box, be sure that the fan is adequately supported to prevent loosening or turning.
2. The fan's electrical connection must be "grounded" (the fan's ground cable connected to the installation's grounding network) in order to avoid any branching that may be dangerous to people.
3. Do not connect the fan's power supply to any dimmers, as it will cause the fan to malfunction and/or will damage the motor. The fan must be directly connected to a properly protected installation circuit (magneto-thermal differential switch with the adequate size for the fan's consumption and technical specifications).
4. After installing the fan, ensure that all fastenings are secure and tightened in order to avoid any noise caused by loose elements.
5. Due to the fan's movement, certain fastenings may become loose. Check all fastenings twice per year at a minimum in order to ensure that they are sufficiently tight. If necessary, they must be re-tightened.
6. The motor housing can be cleaned with a soft brush or a lint-free cloth to avoid scratching the surface. Clean the blades with a lint-free cloth. Important: Turn off the main power supply before starting any maintenance. Do not clean the fans with water or a damp cloth.

**Note:** The important warnings and instructions indicated in this manual are not guaranteed to cover all possible conditions and situations that may occur. It must be understood that common sense, precaution, and care are factors that cannot be included in all products.

These factors can and must only be provided by the user who maintains and enjoys this fan.

# Package List



**Tips:** There is a detailed step-by-step installation video on Amazon's page for this product, so it's easier to follow along with the video!

1. Combine 3 curved iron bars (with lamp holders) to form a round frame, and at the connection between the iron bars, first use the "7" type iron sheet to fix it with screws on the outer side, and then use the square iron sheet to fix it with screws on the inner side.
2. Loosen the screws next to the motor box and remove the cover.
3. Insert the "7" shaped bend on the curved iron bar into the motor box, then place the spring spacer and use the nut to tighten it.
4. Use screws to attach the "7" shaped bend to the curved iron.
5. Place the cover back on the motor box and tighten it again using the screws.
6. Fan blade center round hole aligned with the bottom of the ceiling plate screw, use the plastic cover to tighten. (tighten in the counterclockwise direction)
7. Firstly, take out the protective rubber of the electric wire, then thread the wire through the circular tube and the ceiling plate, and then rotate the circular tube to connect the lamp body and ceiling plate together.
8. Fix the bracket to the junction box with screws. But if there is no junction box, you need to drill 2 × 6MM holes on the ceiling, then insert anchor nails, and finally fix the bracket to the anchor nails with bolts. (In the meantime, please install the wire protection rope on one of the screws. The purpose of the wire protection rope is that it can suspend the whole fan light and make your wiring session easier)
9. Connect the "L" wire to your "live" wire through the orange terminal caps and the "N" wire to your "neutral" wire, the copper wire needs to be wrapped around the green screw or connect to your earth wire.
10. Align the circular holes on the side of the ceiling plate with the bracket and tighten them with screws.
11. Install the cylindrical lamp cup on the lamp holder and finally screw on the bulb.