

ring

Smoke/CO Listener For Ring Alarm



Smoke and CO protection for Ring Alarm.

Ring Smoke/CO Listener is a smart sound sensor for Ring Alarm.

It does not sense smoke or CO directly. Instead, it adds smart functionality to your existing smoke or CO alarm (or smoke/CO combo).

When your smoke or CO alarm begins to sound, the Smoke/CO Listener activates and Ring Alarm notifies you of the issue, wherever you are.* If your system is professionally monitored, our monitoring center is also notified.

*Ring Alarm and all Ring Alarm accessories require a subscription for digital arming/disarming, integration with other Ring and Echo products, digital notifications, and in-app features. Subscription sold separately.

Before you install...

Smoke and CO alarms have a finite lifespan. Check the date on your alarm and consult the manufacturer's instructions to see if it needs replacing.

Contents

1. Diagram

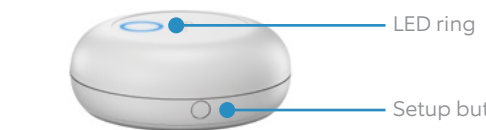
2. In-app Setup

3. Physical Installation

4. Additional Information

1. Say hello to your Ring Smoke/CO Listener.

Diagram



LED ring

Setup button



Microphone



Mounting bracket

2. Set up your Ring Smoke/ CO Listener in the Ring app.

Begin the setup process near your Ring Alarm Base Station.

In the Ring app, tap **Set Up a Device**.

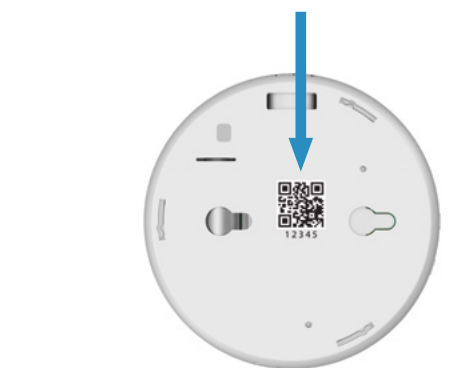
Choose **Security Devices**, then **Sensors**, then **Ring Smoke/CO Listener**, then tap **Add Device**.

To complete the setup process, follow the in-app instructions.



When prompted, scan the QR Code or enter the PIN.

This begins the pairing process. The QR Code and PIN are on the back of your Listener and in the product packaging.

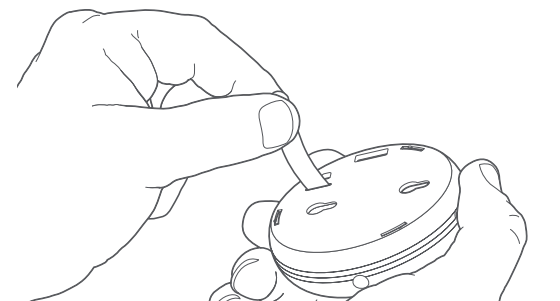


When prompted, pull out the clear tab.

This turns the Listener on. Your Alarm Base Station then finds it automatically.

As the Listener pairs to your Alarm Base Station, its LED ring blinks slowly, then quickly. Once it pairs, the LED glows blue for three seconds.

i If the Listener does not pair successfully, the LED ring glows red. To try the pairing process again, remove and reinstall the battery inside the Listener.



3. Install and test your Ring Smoke/CO Listener.

Install your Listener first. Then, test it.

During the setup process, the Ring app will prompt you to test your new Smoke/CO Listener.

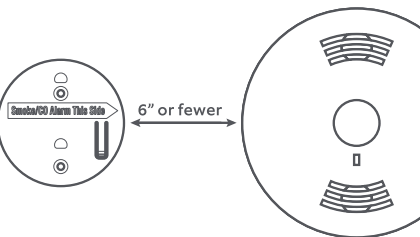
This test depends on the Listener being installed next to your smoke or CO alarm, so it can reliably hear its alarm signals.

So, be sure to install your Listener before you proceed with the testing step.

Line up the mounting bracket.

Find a place for the bracket within six inches (15.25 cm) of your smoke or CO alarm. You can use the ruler below to make sure.

Position the mounting bracket so that the arrow marked *Smoke/CO Alarm This Side* points directly at your smoke or CO alarm.



← Maximum distance between Smoke/CO Listener and smoke or CO alarm →

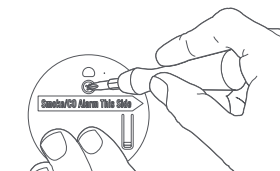
Secure the mounting bracket and mount the Listener.

Once you've decided on a location, secure the bracket to your ceiling or wall with the included screws.

Place the Listener on the bracket posts, then slide to lock it in place.

i When mounting on drywall, pre-drill the holes and insert the included anchors.

i During the setup process, the Ring app prompts you to press the "Test" button on your smoke or CO alarm. Mount the Listener on its bracket before testing your alarm.

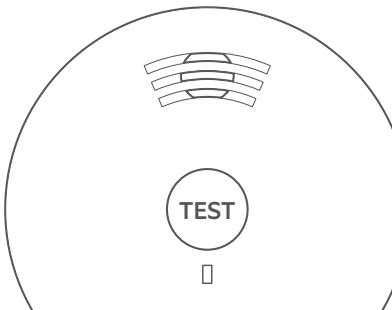


Test your Listener.

Now, it's time to head back to the Ring app and go through the testing process.

When prompted, press the test button on your smoke or CO alarm. If you're not sure where it is, check the instructions.

The Ring app will tell you when your Listener has detected the smoke or CO signal from your alarm.* If your alarm is a smoke/CO combo, both smoke and CO signals should be detected.



If your Listener is unable to detect the signal, your Ring Alarm cannot monitor your smoke or CO alarm.

This may mean your alarm is too old and must be replaced.

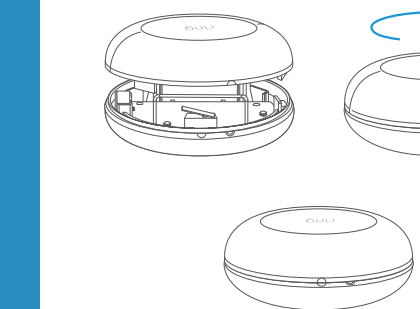
*Ring Alarm and all Ring Alarm accessories require a subscription for digital arming/disarming, integration with other Ring and Echo products, digital notifications, and in-app features. Subscription sold separately.

4. Additional information.

How to replace the battery:

Twist the lid on your Listener counter-clockwise and lift to remove. Replace the battery with a fresh CR123A cell. The Listener then reconnects to your Alarm Base Station automatically.

Place the lid back on the Listener, taking care to line up the semi-circle on the rim of the lid with the "open" semi-circle on the base. Twist the lid clockwise to lock it in.



How to remove Ring Smoke/CO Listener from your system:

Open the side menu in the Ring app and tap **Devices**, then **Base Station**. Next, select your Listener and tap the gear-shaped icon. Then tap **Remove Device**.

When prompted, open the Listener and remove and reinstall the battery to complete the removal.


Having trouble with your Listener?


If your Listener stops working or will not connect (even with a good battery), try a factory reset.

To do this, press and hold the Setup button for 10 seconds. When the LED ring stops blinking, your Listener has reset.

i This process disconnects the Listener from Ring Alarm. To begin using the Listener again, repeat the setup process in the Ring app.

LED status patterns:

Smoke or CO alert sound detected  1 Blue Blink

Sensor tampered  3 Red Blinks

For info on other LED patterns, visit ring.com/help.

Do not paint this device!

Painting your Listener can prevent it from functioning correctly.

Painting smoke or CO alarms can degrade their performance as well, and is strongly discouraged.