

The Original
smarTrike®



www.smarTrike.com

www.youtube.com/user/SmartTrikeOfficial

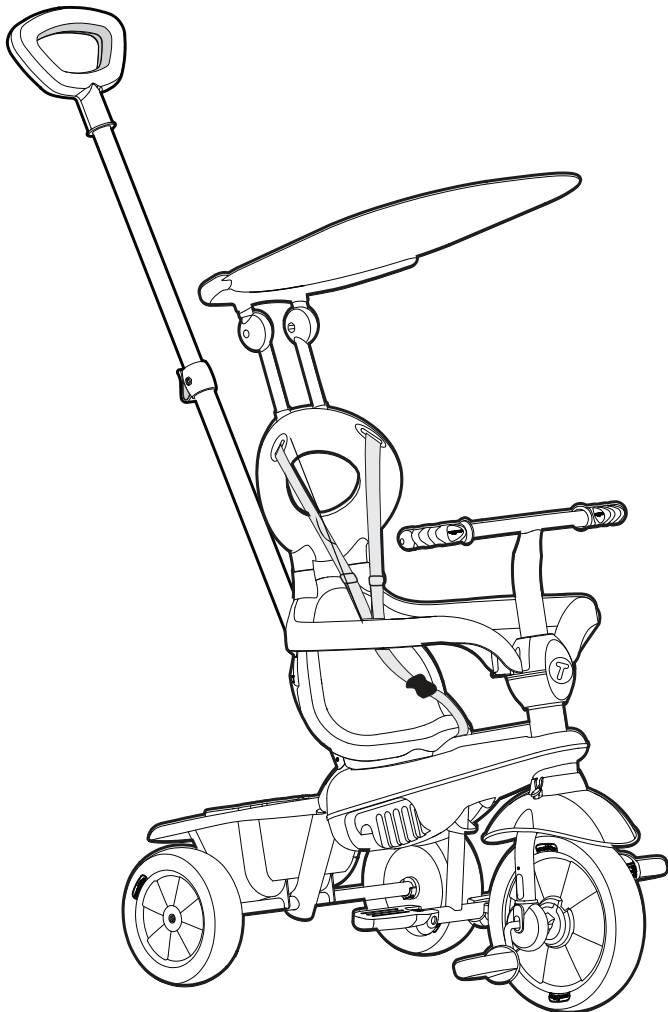
Thank you for buying smarTrike®.

If you have any assembly questions,
please contact us for assistance
or store returns.

help@smartrike.com

USA: 1-855-SMTRIKE

(1-855-768-7453)



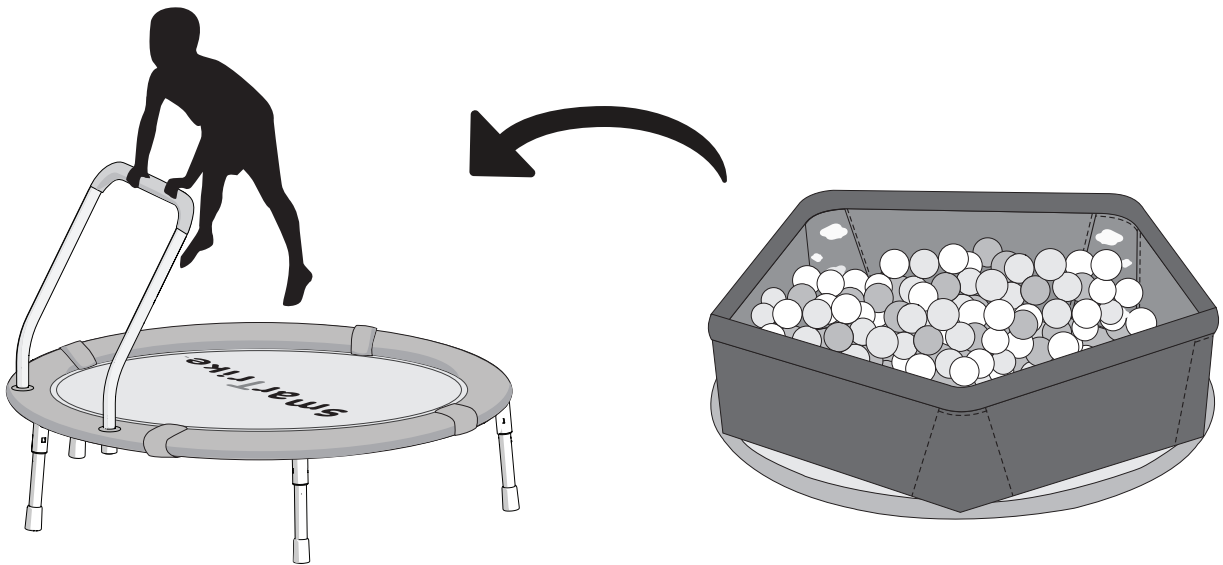
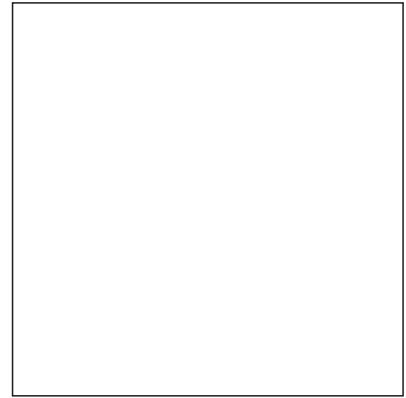
Watch a live assembly !
Scan this code to view
a step-by-step visual guide, and
assemble your product with ease.

www.Assembly.smarTrike.com/Zoom

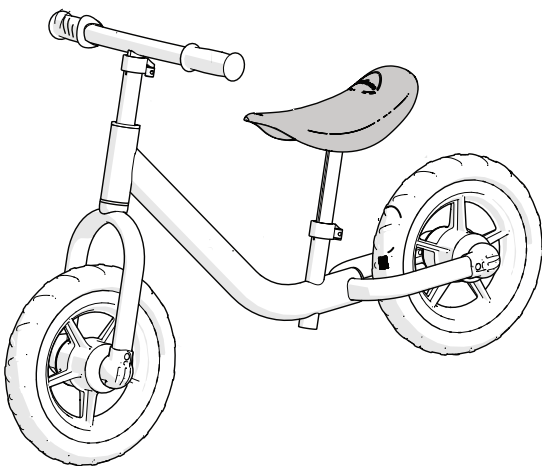


31902A

Check out other
amazing smarTrike[®]
products to keep
your children active!



Activity Centers



Balance Bikes

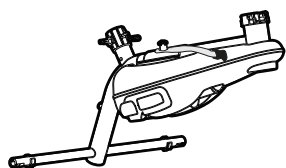


Scooters

Zoom® 319

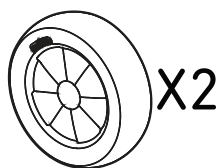
1

665100



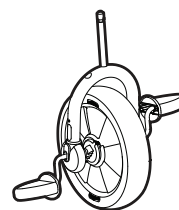
A

607130



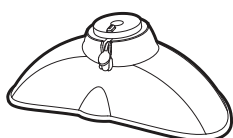
B

607120



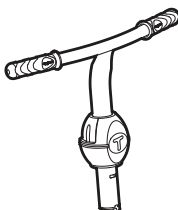
C

607210



D

607150



E

607220



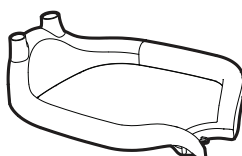
F

607110



G

607200



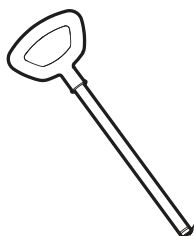
H

607141



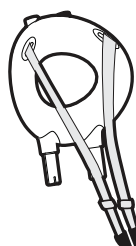
I

607140



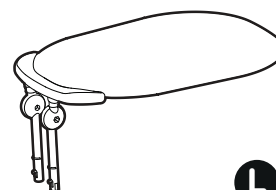
J

665160



K

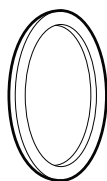
607160



L

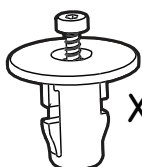
2

607190



x4

M



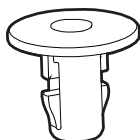
x2

N

Spare part



O



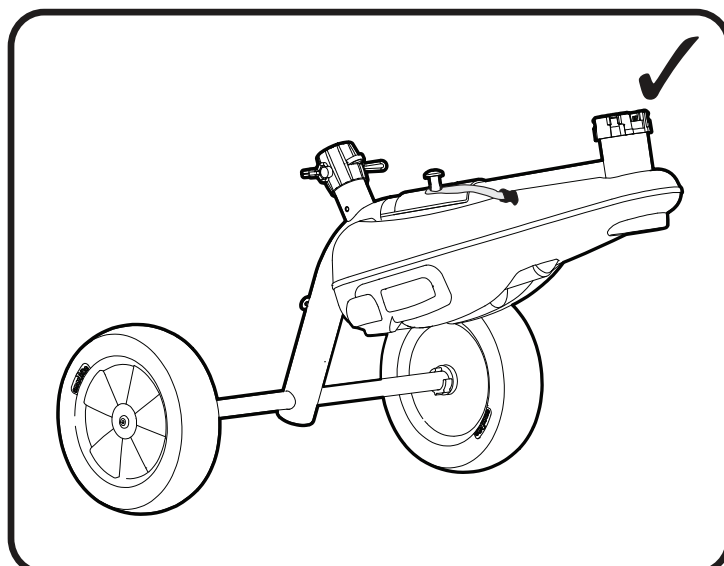
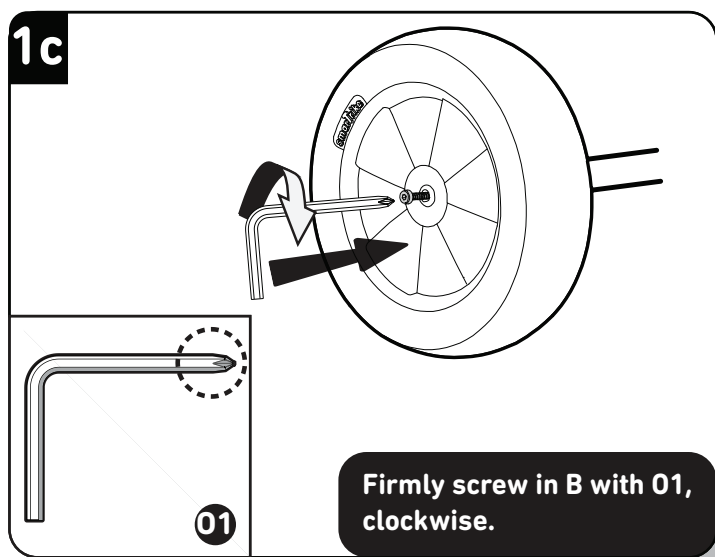
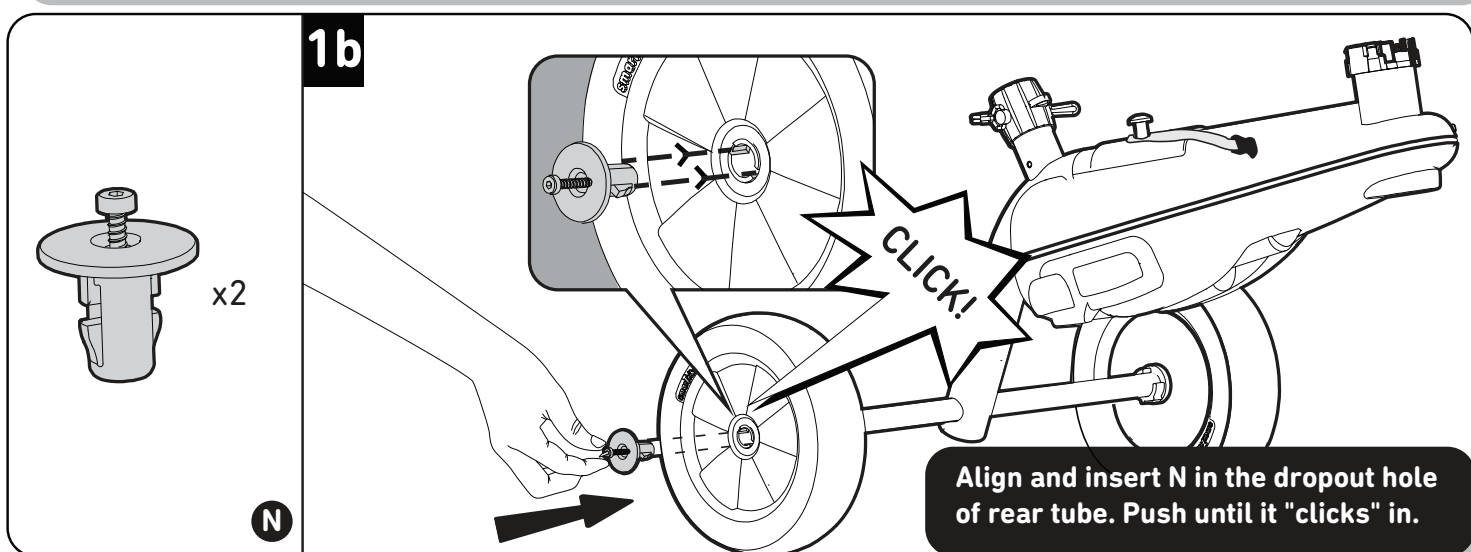
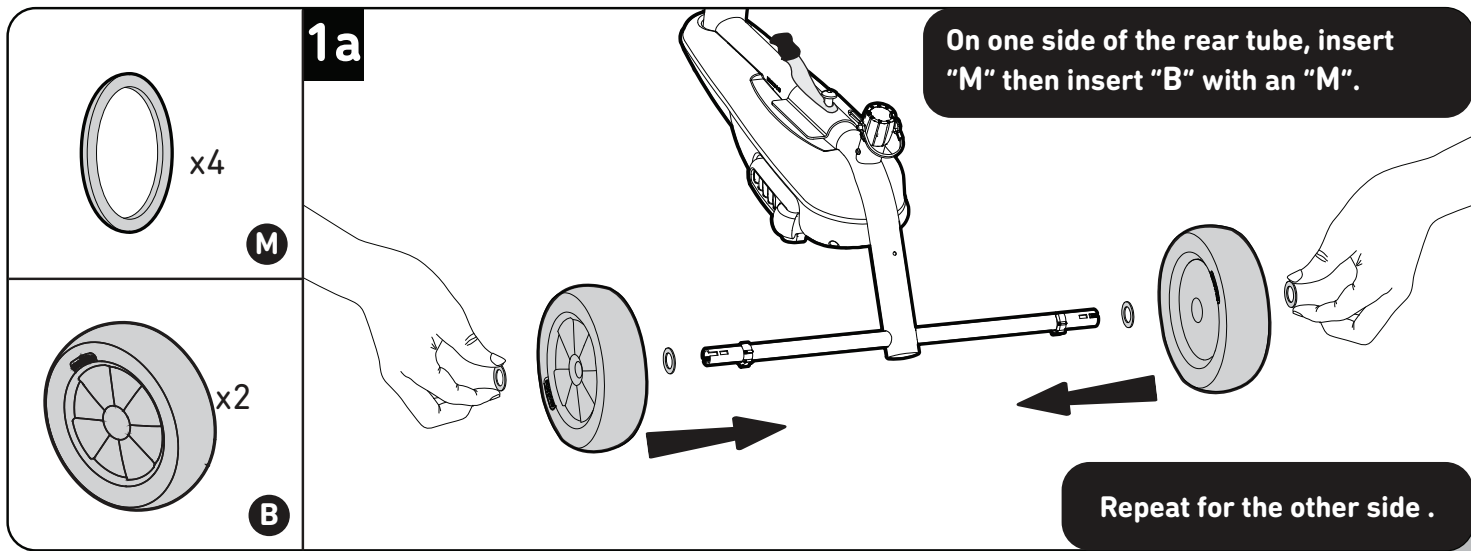
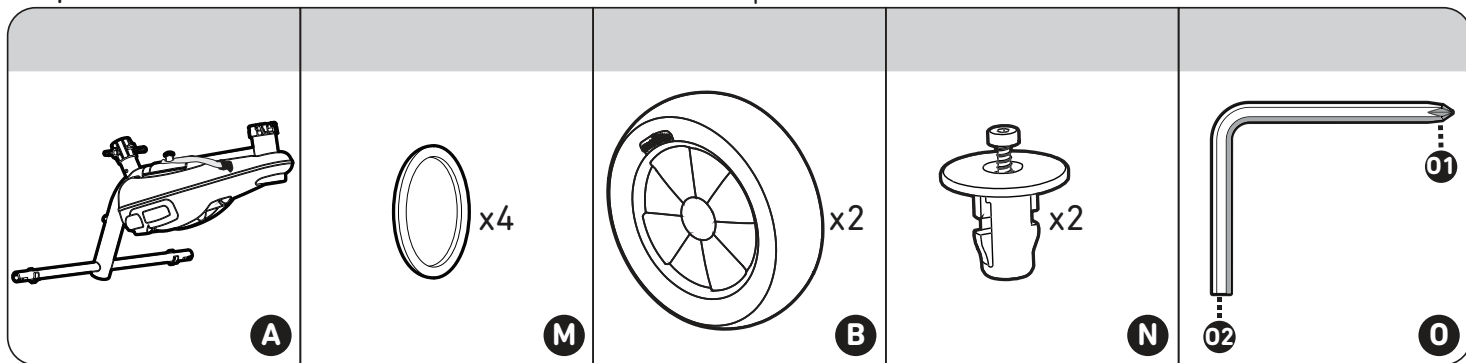
P



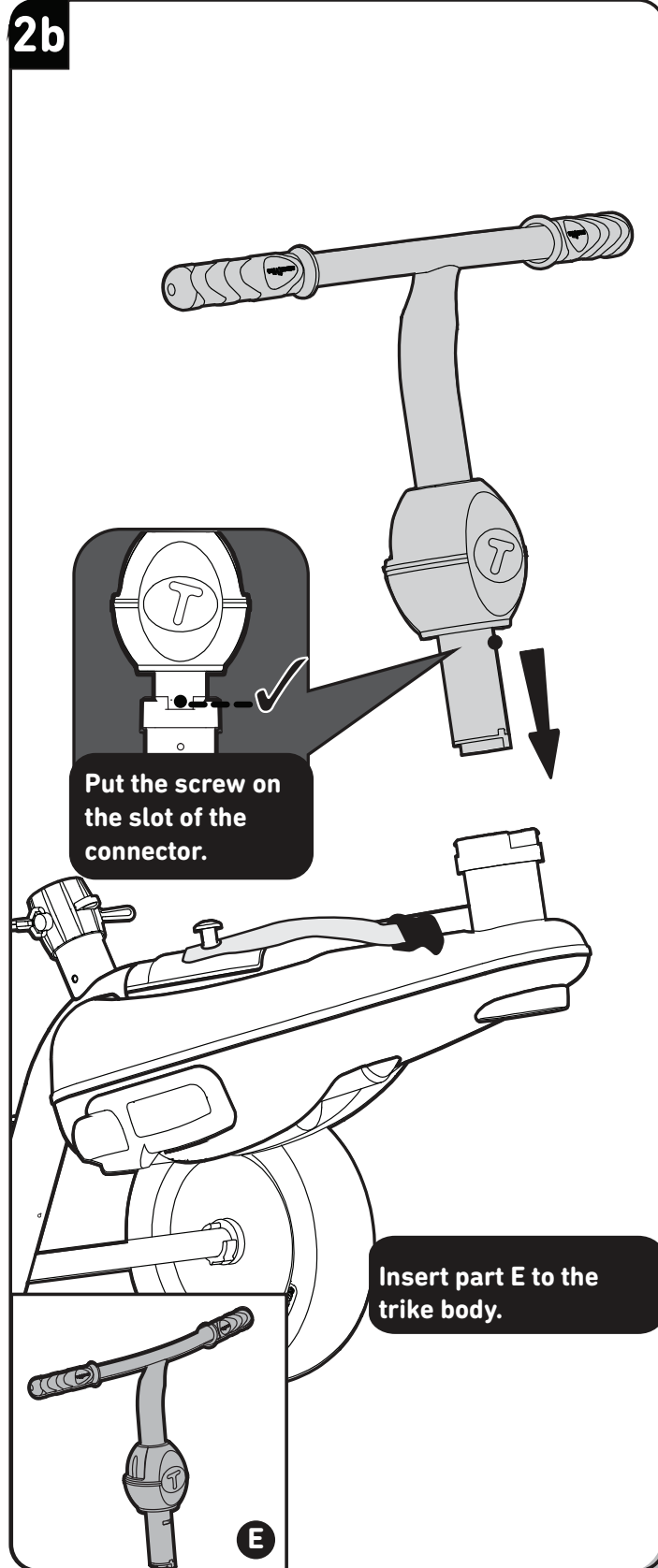
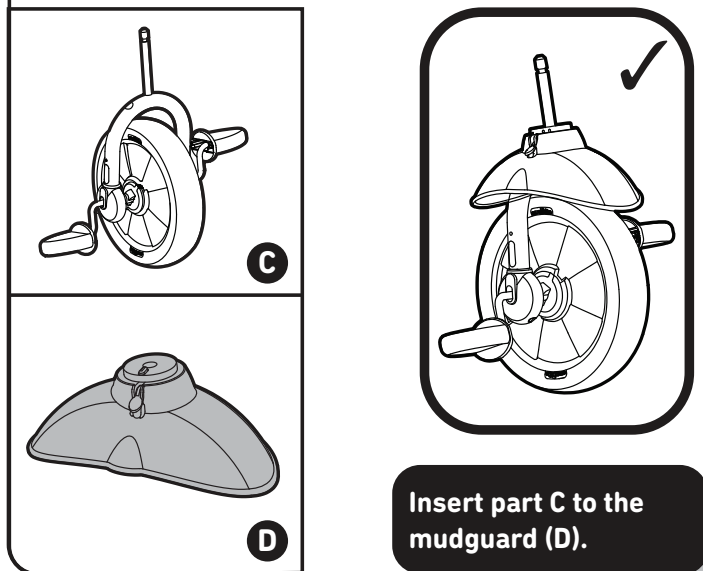
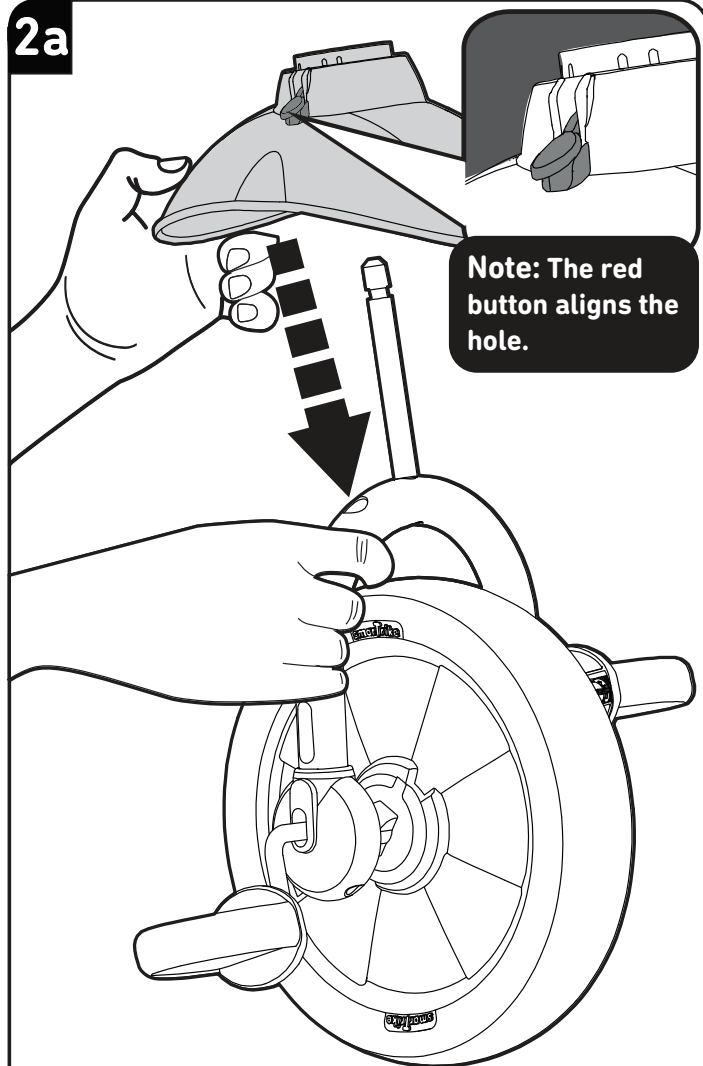
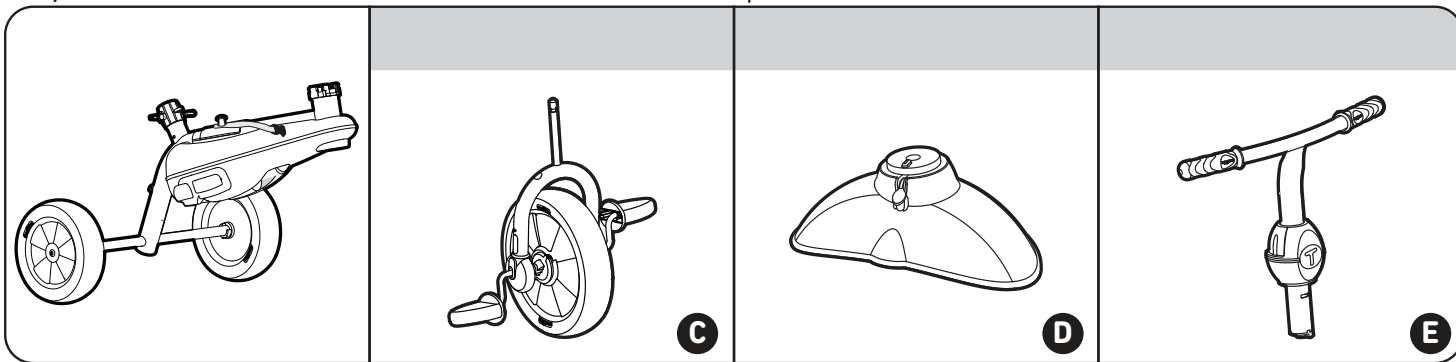
Scan this code to view a step-by-step visual guide, and assemble your product with ease

Step 1

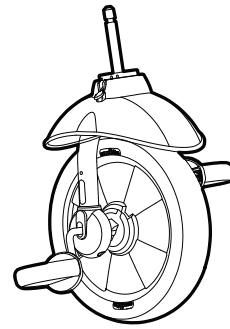
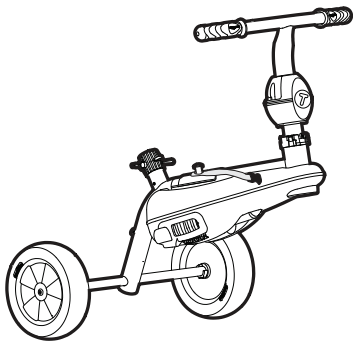
Parts needed to complete this section



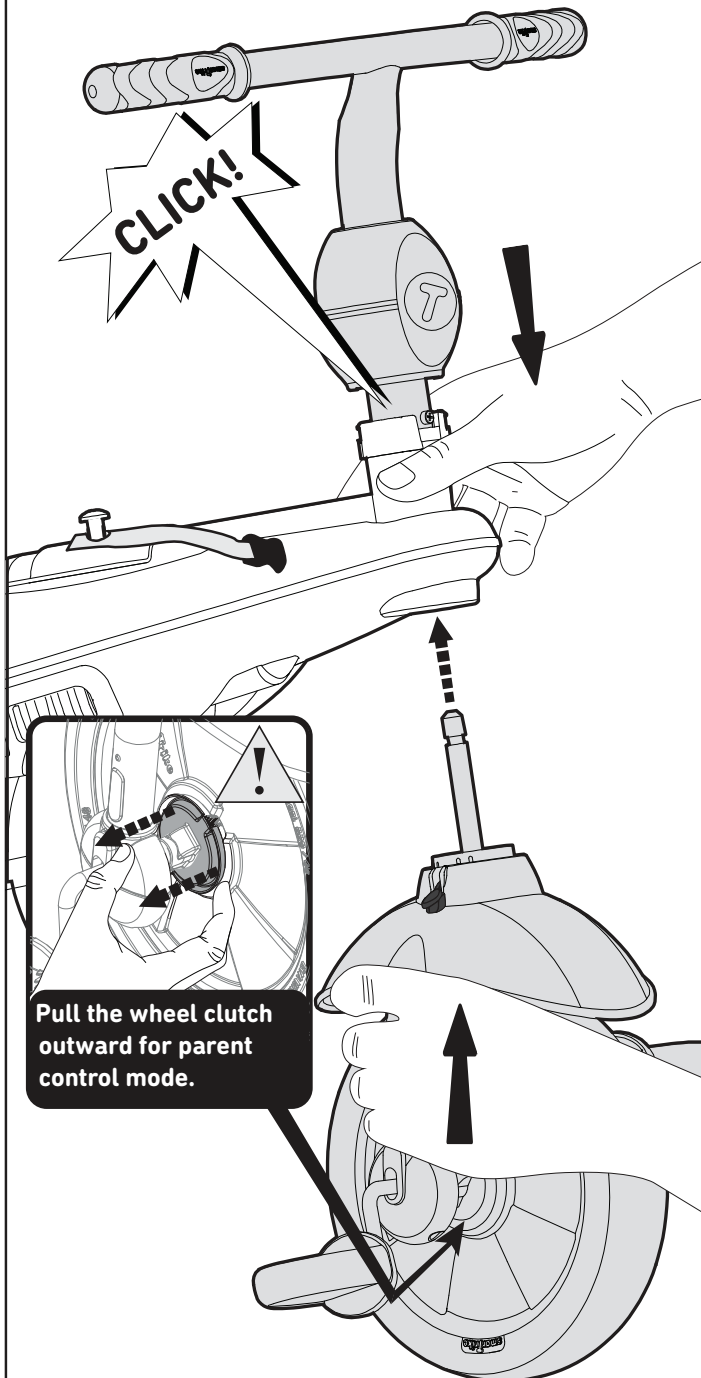
Scan this code to view a step-by-step visual guide, and assemble your product with ease



Scan this code to view a step-by-step visual guide, and assemble your product with ease

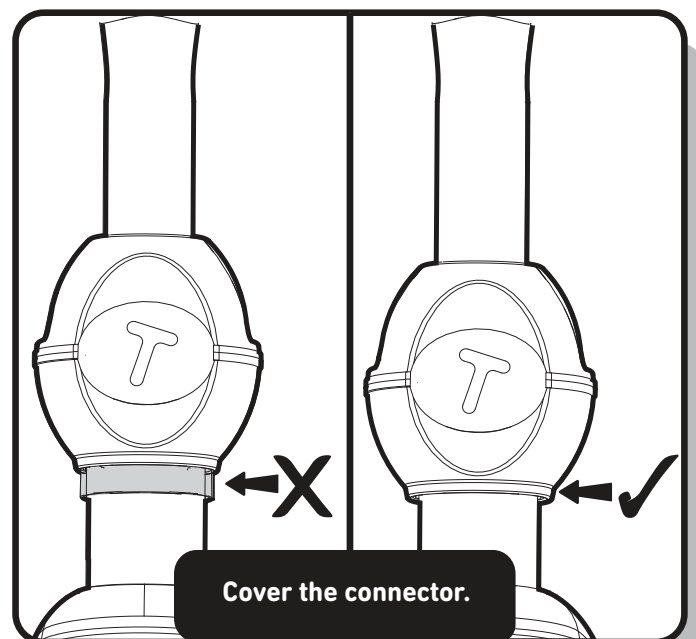
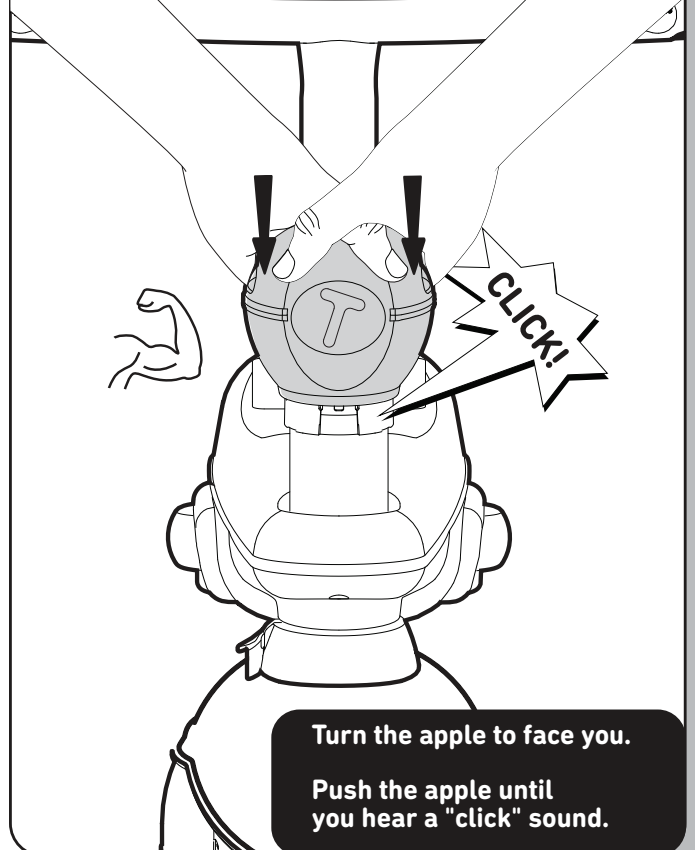


3a

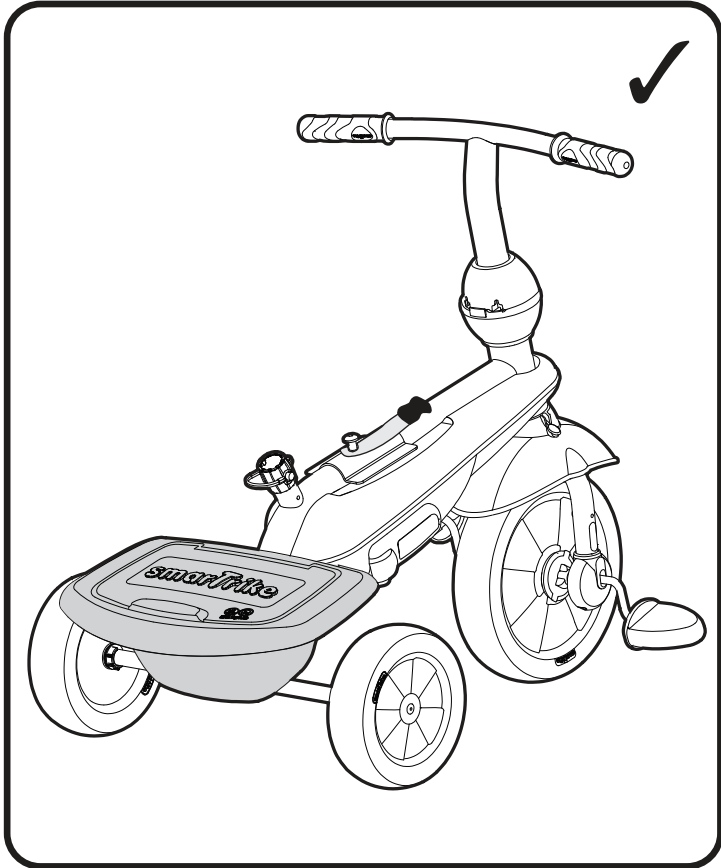
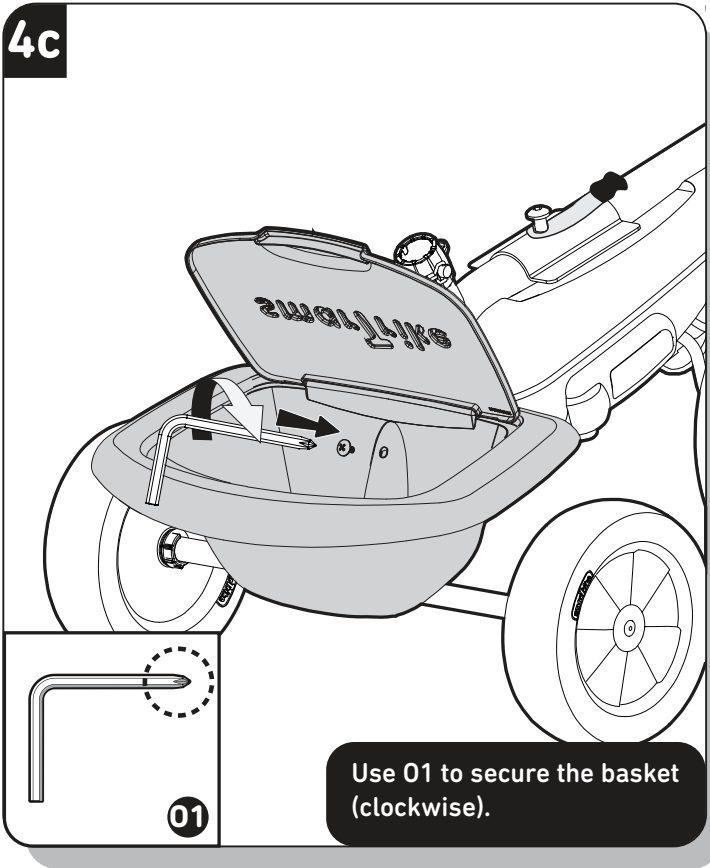
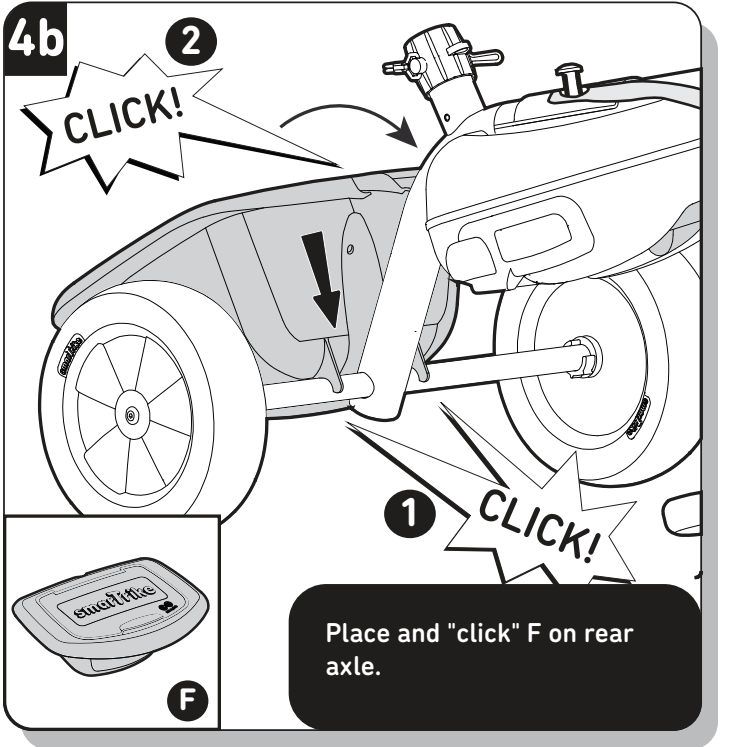
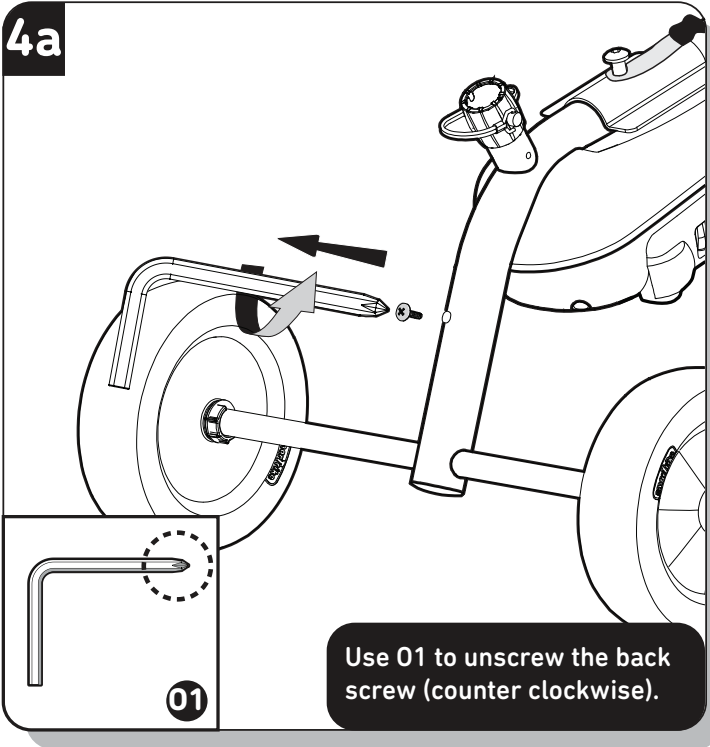
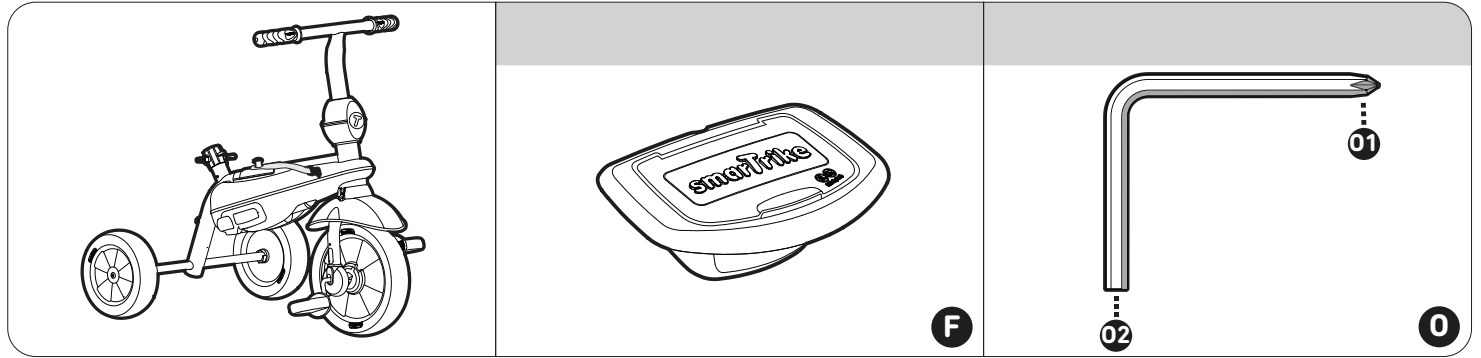


With the red button on the right side of the trike, insert the wheel into the body of the trike.

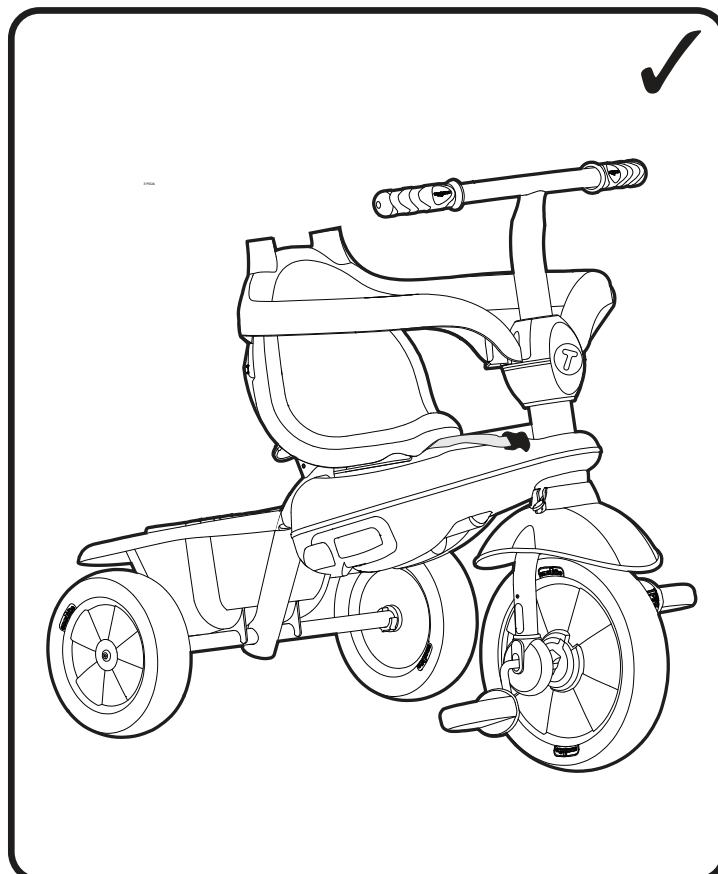
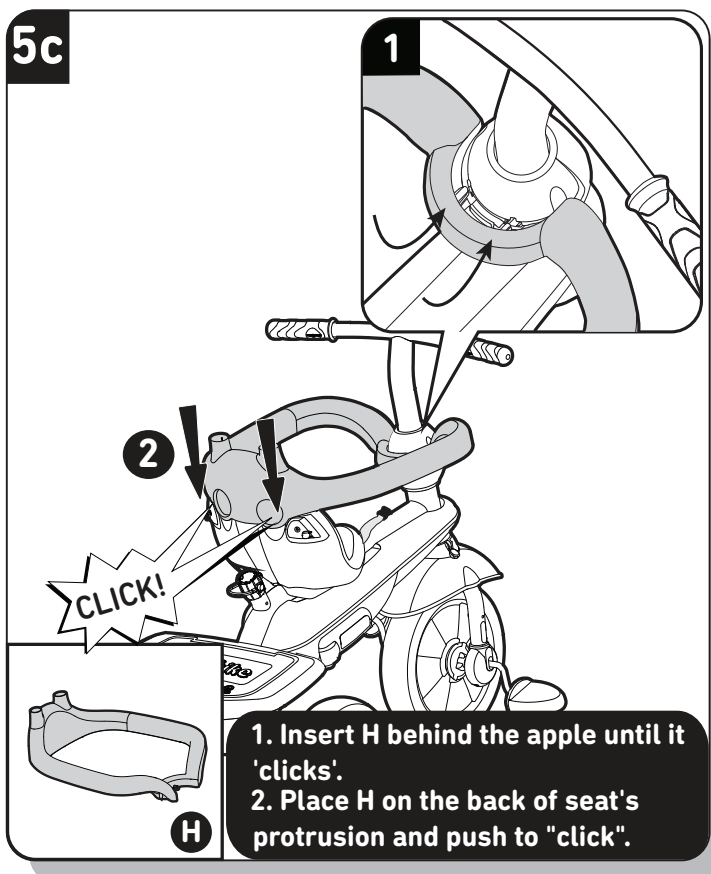
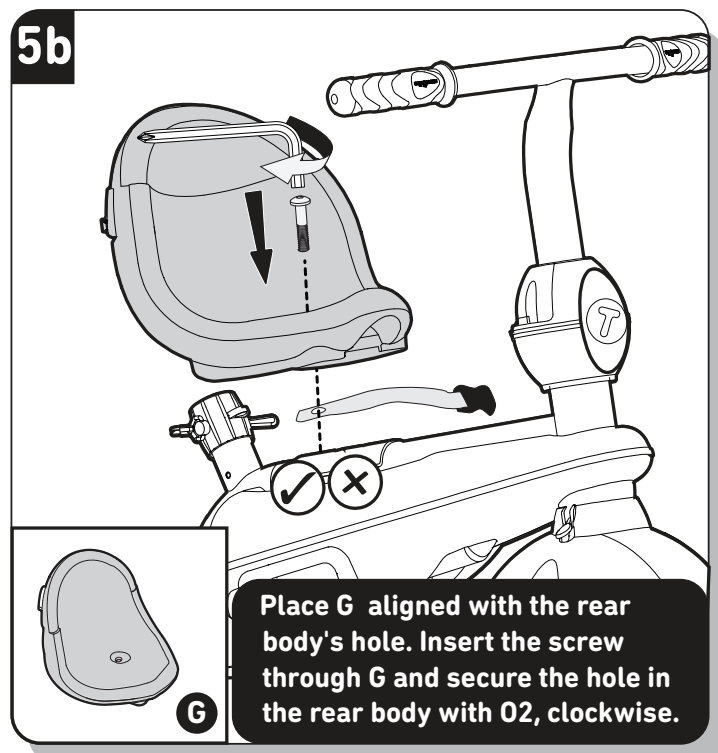
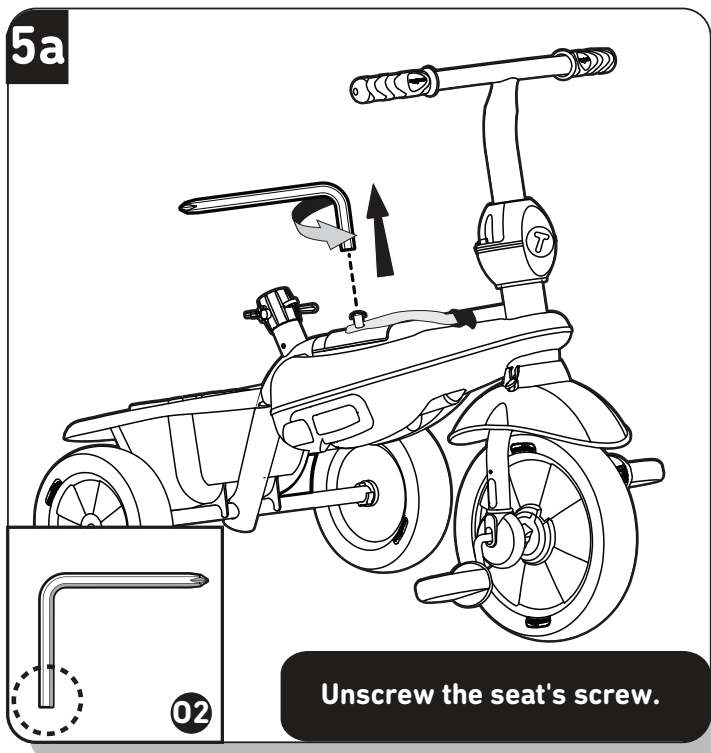
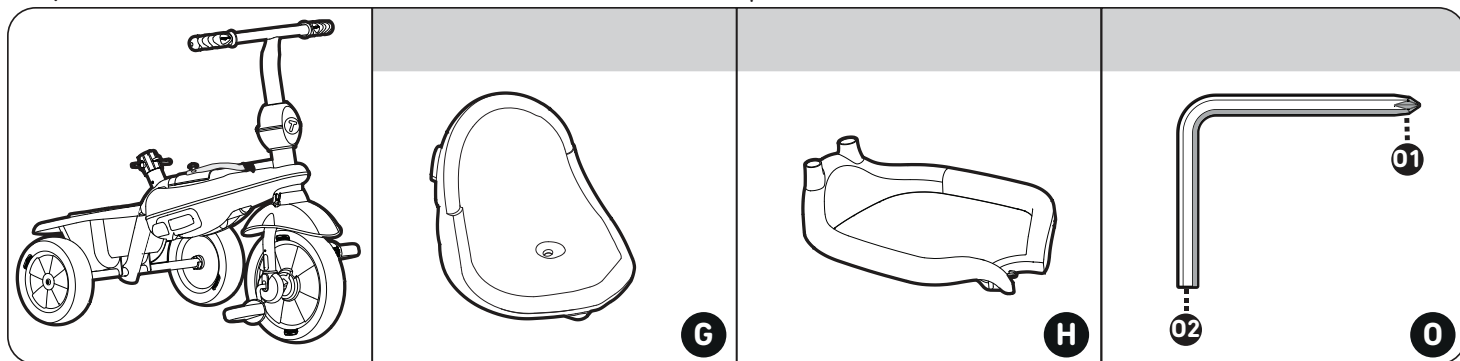
3b



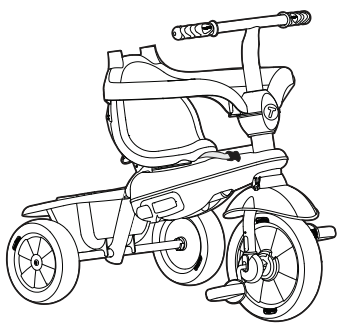
Scan this code to view a step-by-step visual guide, and assemble your product with ease



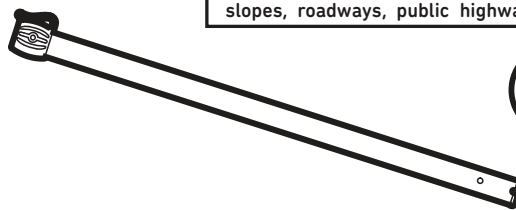
Scan this code to view a step-by-step visual guide, and assemble your product with ease



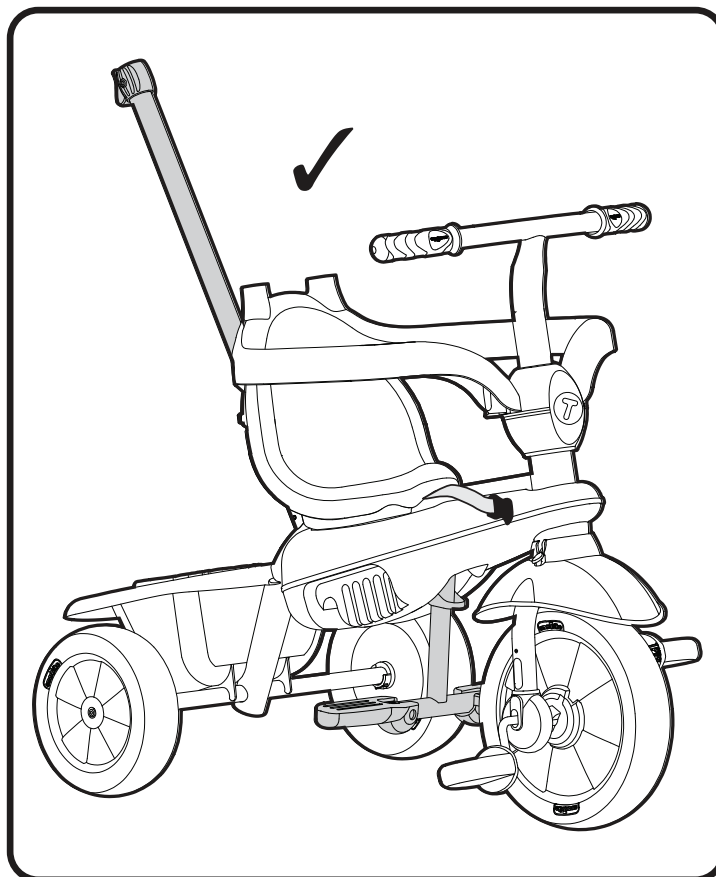
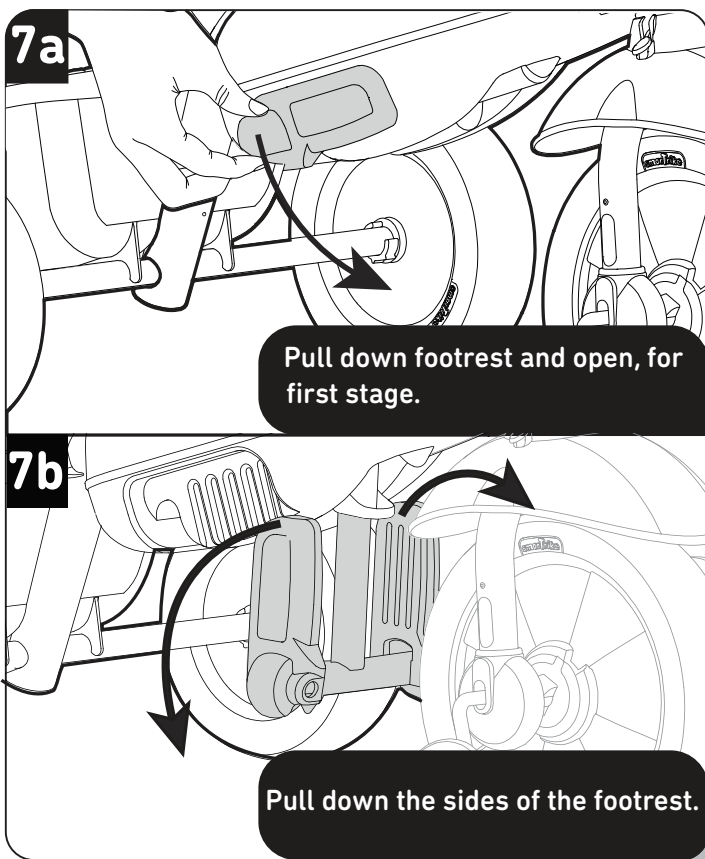
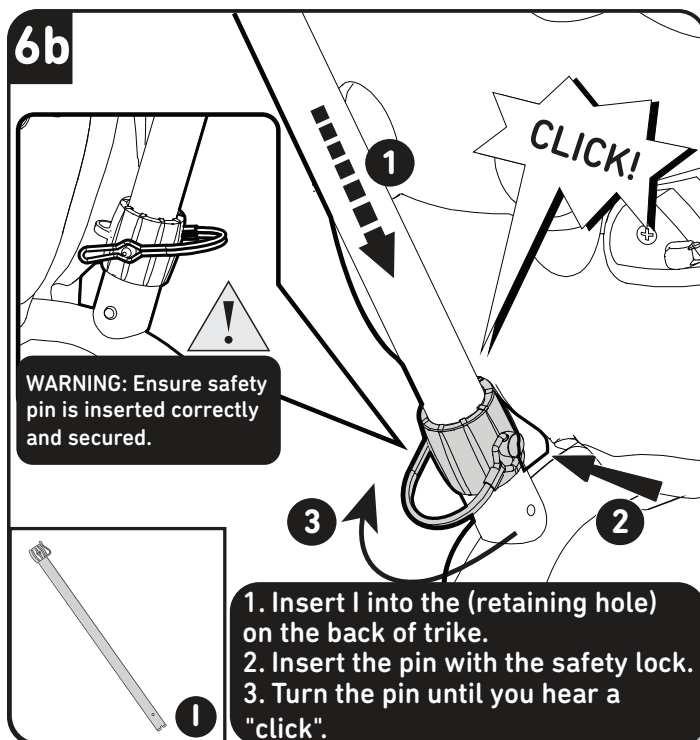
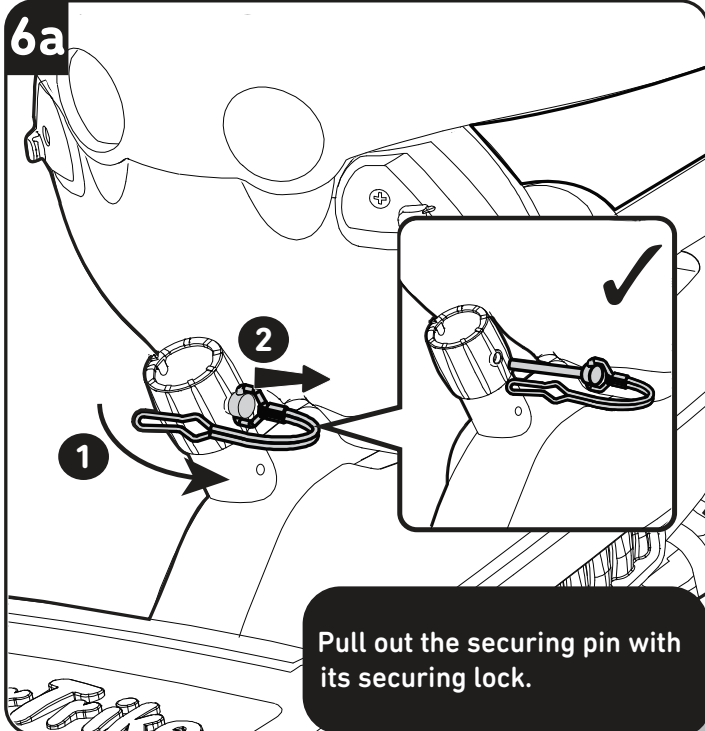
Scan this code to view a step-by-step visual guide, and assemble your product with ease



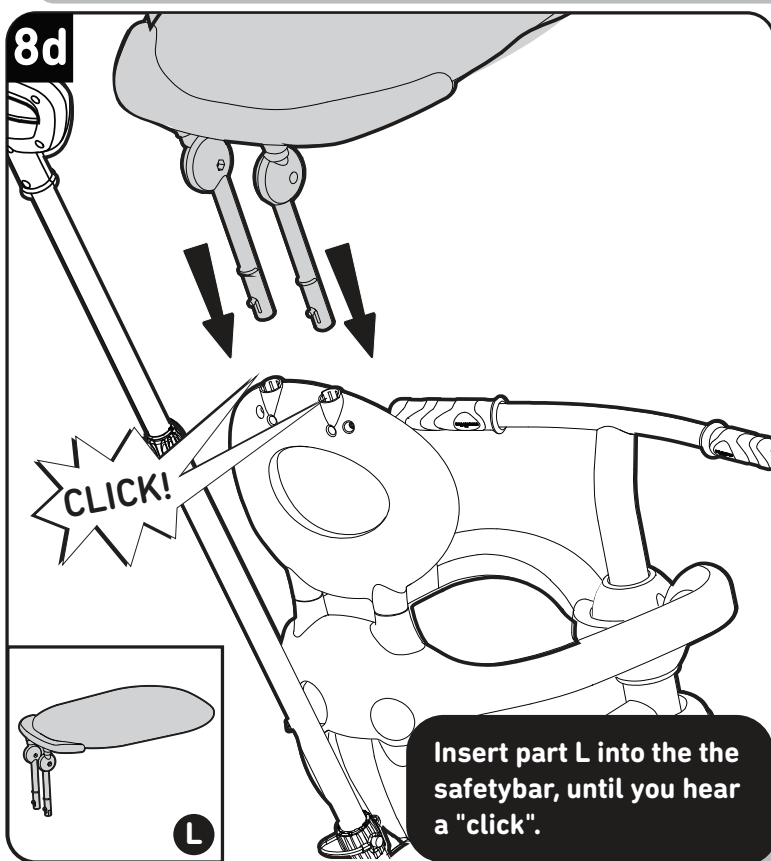
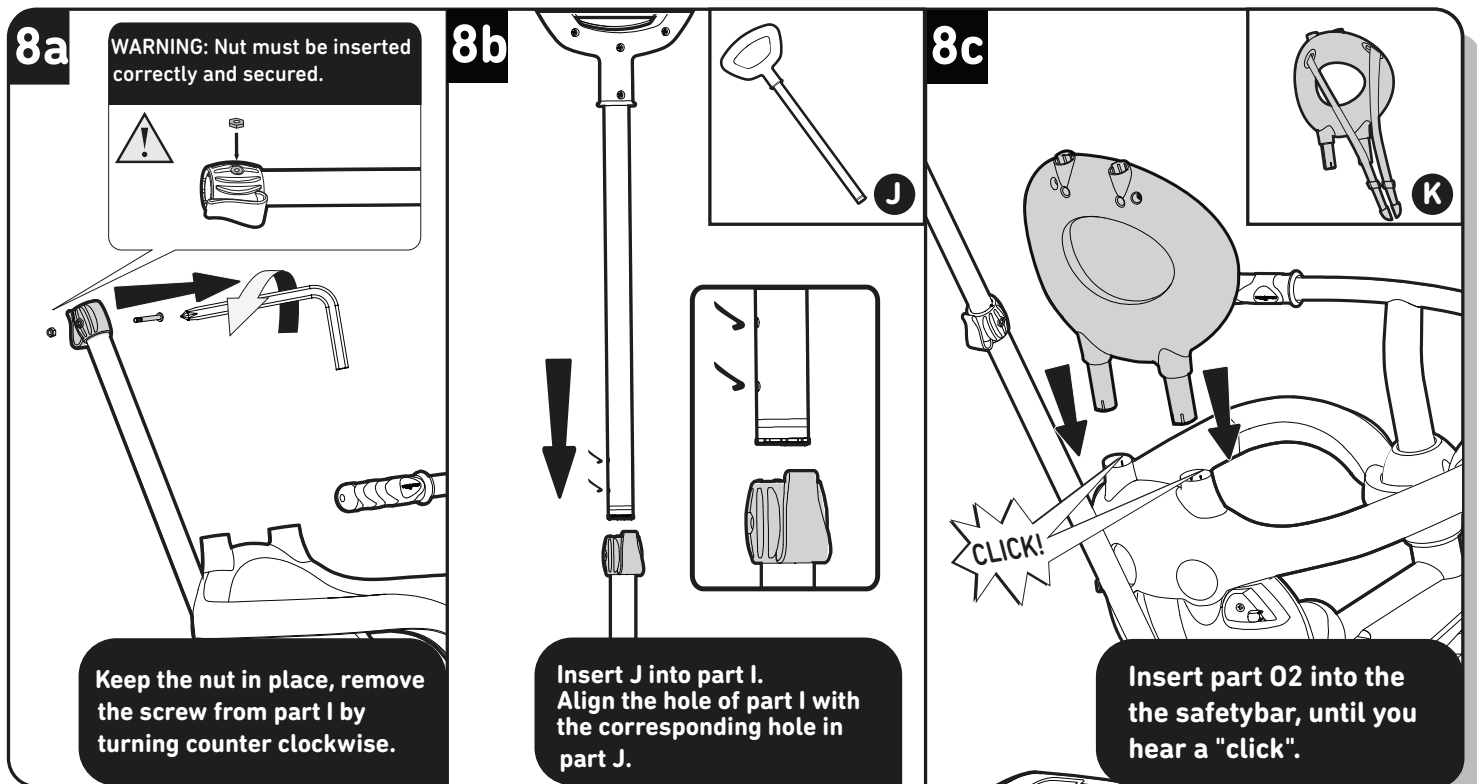
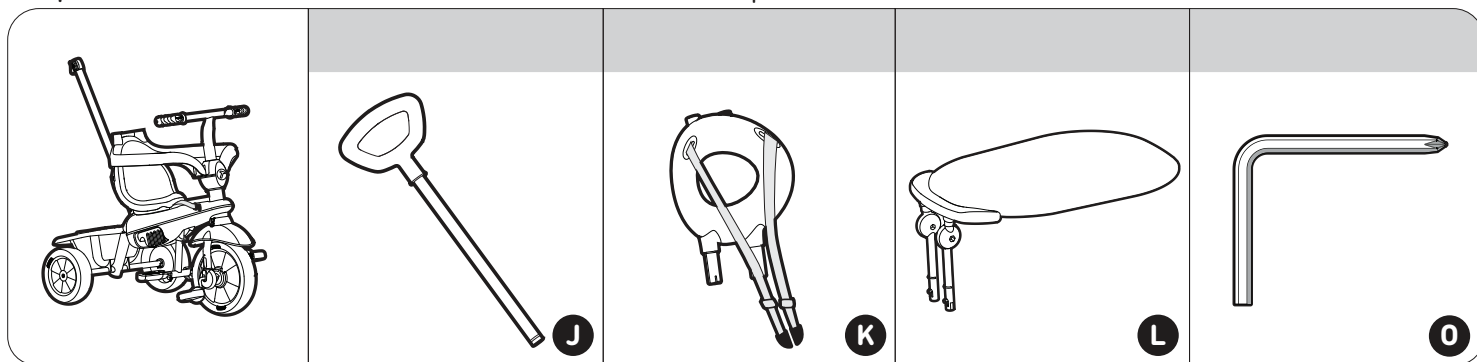
WARNING: This product should be used on safe ground, it should not be used near steps, slopes, roadways, public highways or wet areas.



1



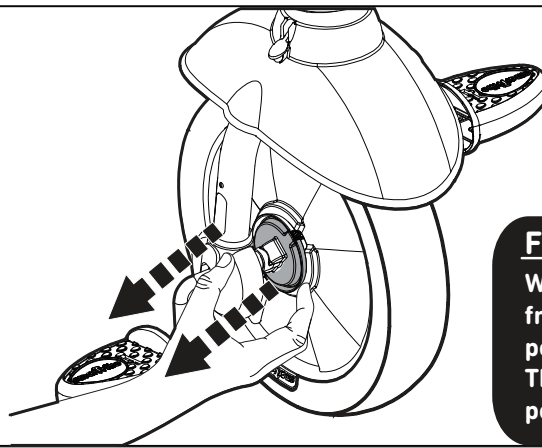
Scan this code to view a step-by-step visual guide, and assemble your product with ease



Scan this code to view a step-by-step visual guide, and assemble your product with ease

Parent Control

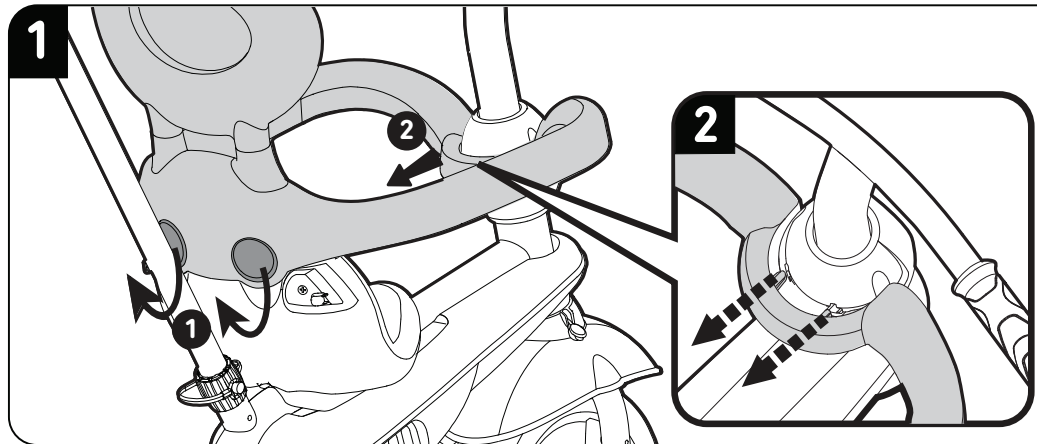
15M



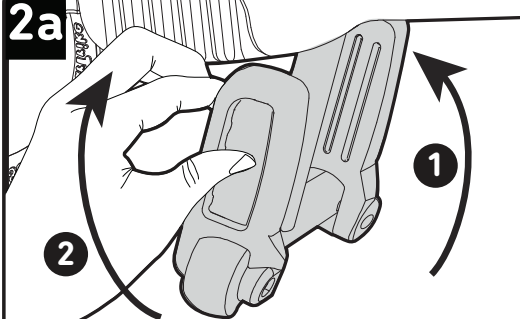
Free-wheel Position:

When the clutch is pulled away from the wheel, there is no pedal control. The wheel is in the free-wheel position.

Child Control

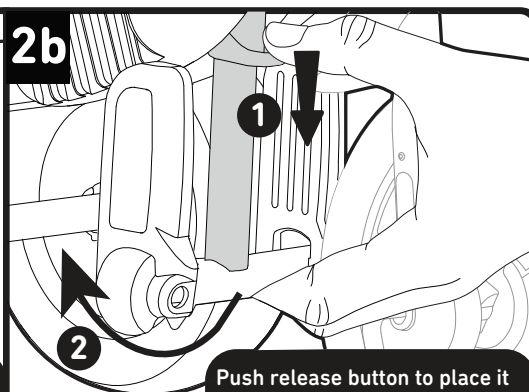


2a

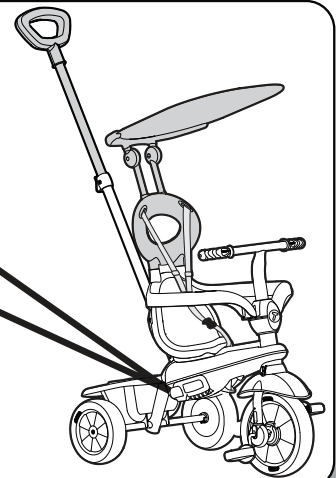


For the 24+ months stage, fold up left and right footrest.

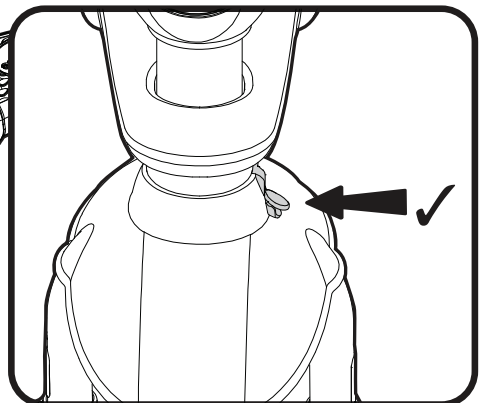
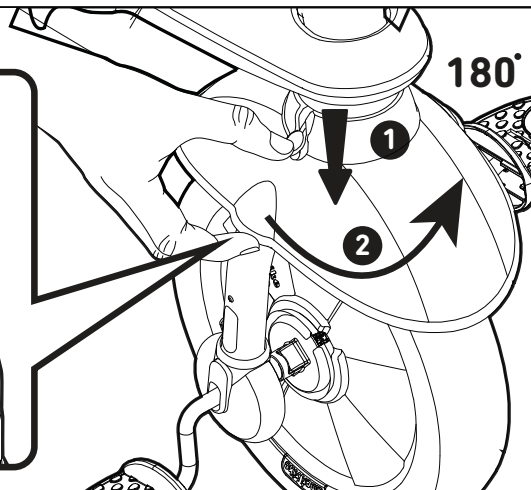
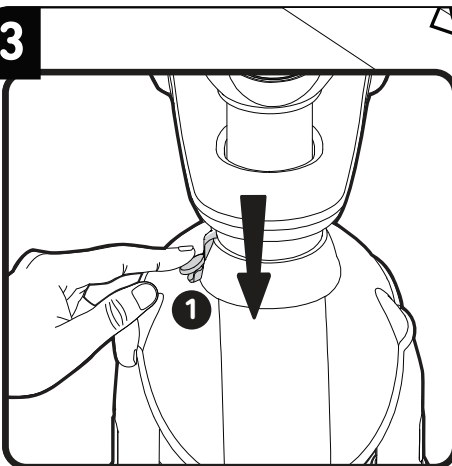
2b



Push release button to place it back into frame.

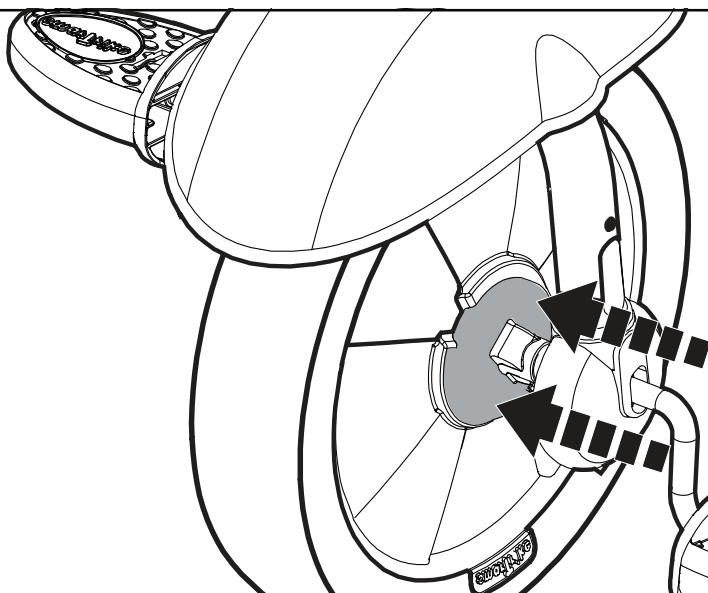


3



Scan this code to view a step-by-step visual guide, and assemble your product with ease

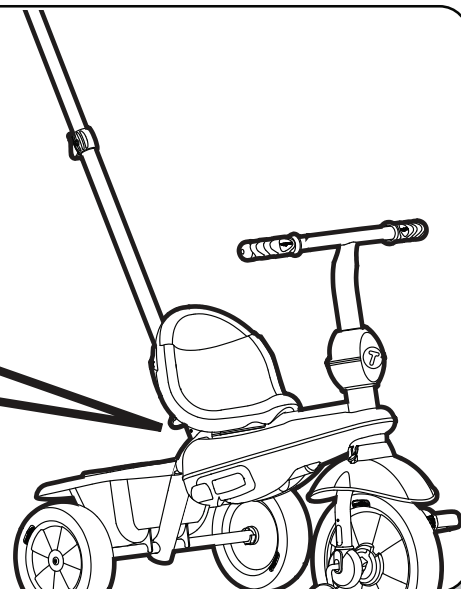
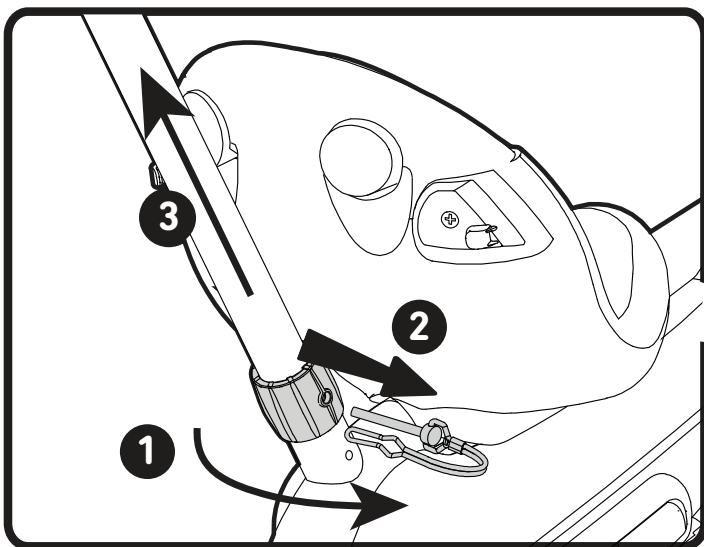
4



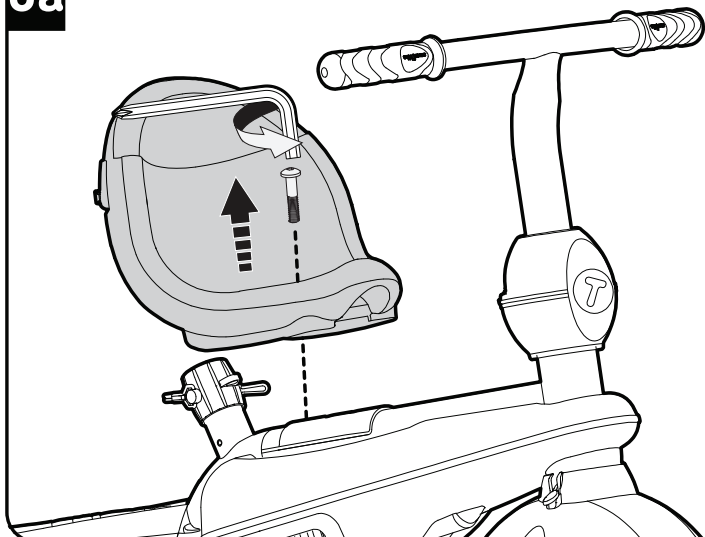
The child has pedal control when the clutch is:

1. Pushed closed.
2. Aligned with the front wheel.

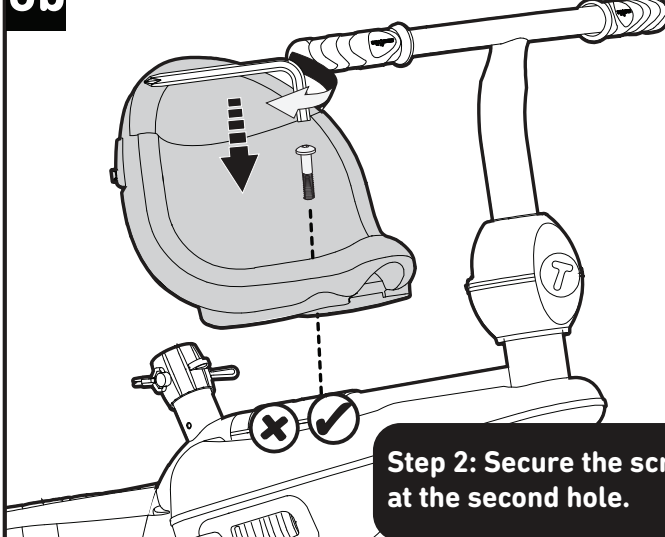
5



6a



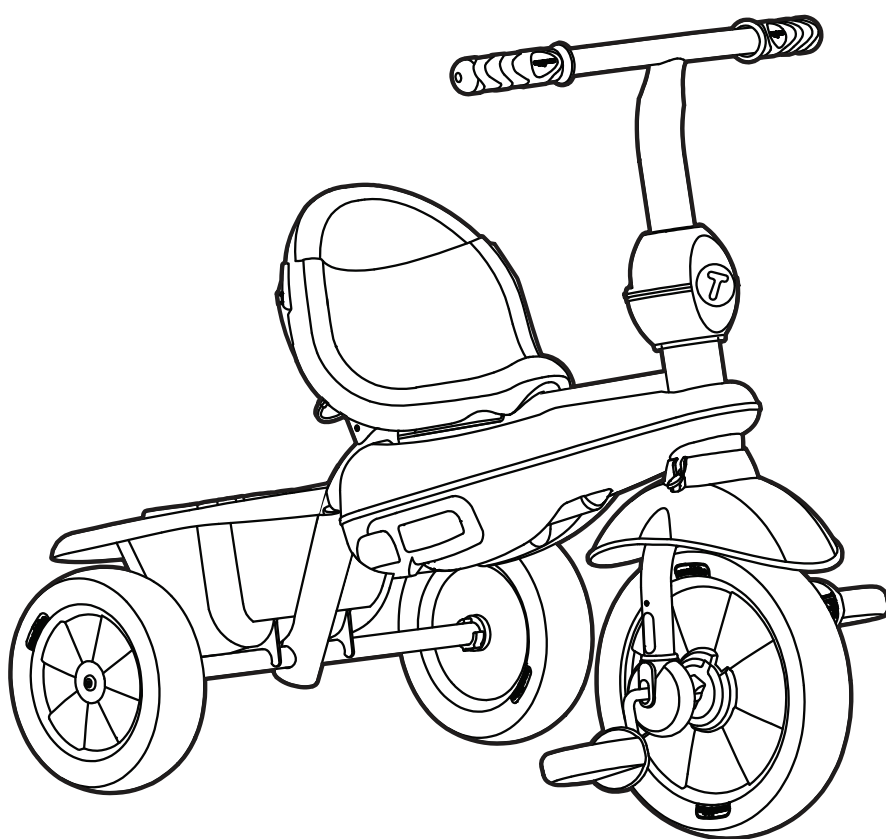
6b



Step 2: Secure the screw at the second hole.



Scan this code to view a step-by-step visual guide, and assemble your product with ease



Scan this code to view a step-by-step visual guide, and assemble your product with ease

The Original
smarTrike®



www.smarTrike.com

www.youtube.com/user/SmartTrikeOfficial

31928183603