

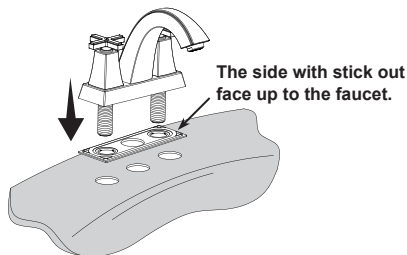
EZANDA

BEFORE INSTALLATION

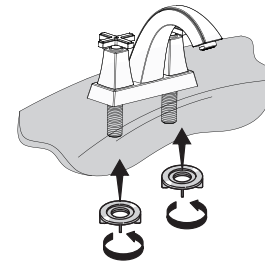
- To insure proper installation, please read the following instructions carefully.
- Please make sure that the water supply has been shut off at the stop valve.
- EZANDA reserves the right to update product without notice.

If you have any question or need help,
please visit **EZANDA** website
<http://www.ezanda.com>

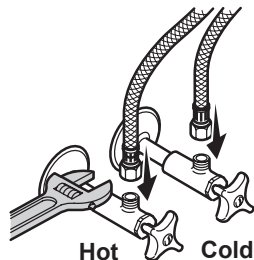
1. Insert the faucet.



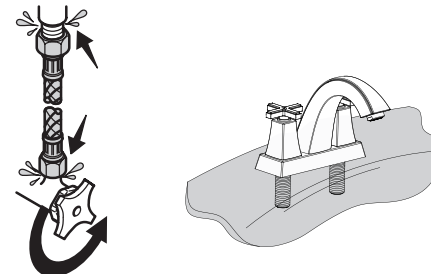
2. To tighten the mounting nuts.



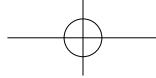
3. Connect and tighten the hot & cold supply hoses.



4. Turn on the water supplies. Check all connections for leaks.



· Every once in a while, please rinse the faucet with lukewarm soapwater, and wipe it clean with a soft duster cloth.
Please avoid any abrasive cleaners, steel wools, or corrosive chemicals.



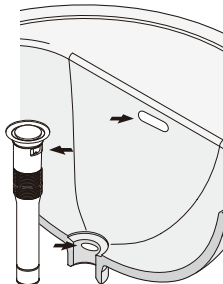
EZANDA

Pop-up Drain with Overflow Installation Guide

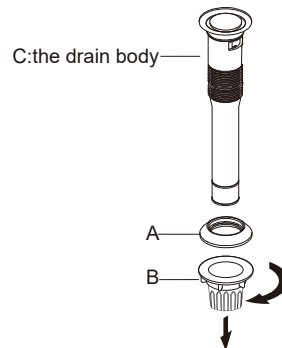
If you have any question or need help,
please visit EZANDA website
<http://www.ezanda.com>

NOTES:

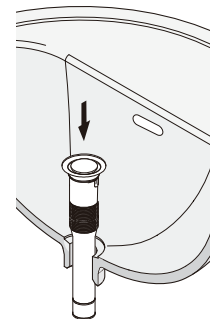
- Fits for sink WITH overflow hole.
- Clean the sink hole, make sure to remove debris.
- Please avoid using plumber's putty. The seal on top is leak-free. Plumber's putty might cause damage.
- Silicone and plumbing tape can be use for sealing requirement.



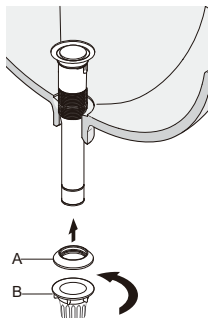
1 Unscrew components A & B to the seal.



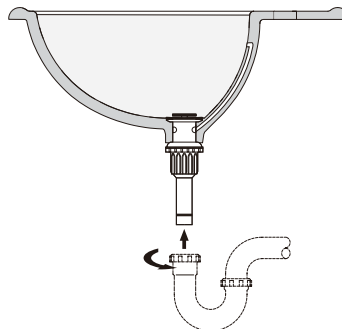
2 Slide the drain body C through the hole in the sink.



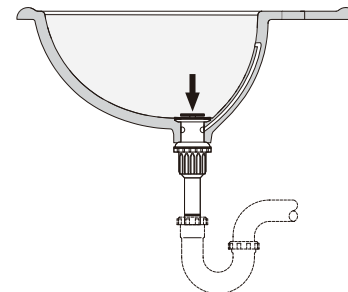
3 Screw components A & B back on as shown.



4 Connect the rear end of the drain to the Drain Pipe.



5 Push to activate.



If you have any question or need help, please visit EZANDA website <http://www.ezanda.com>