

Want to watch
how it's done?
SCAN BELOW

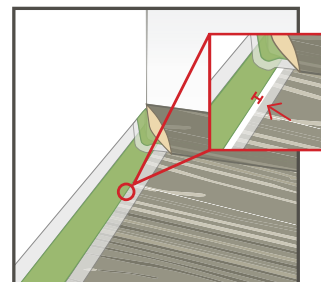


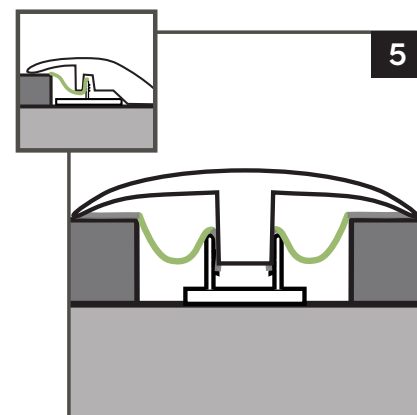
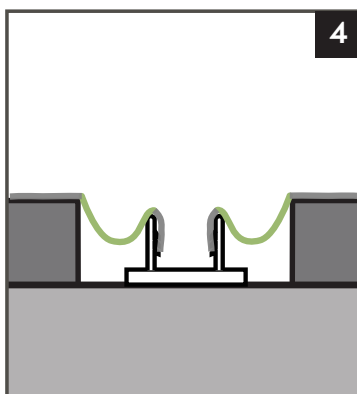
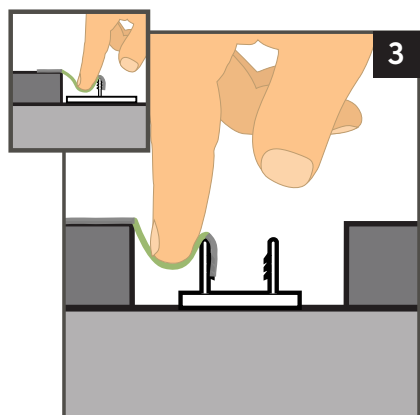
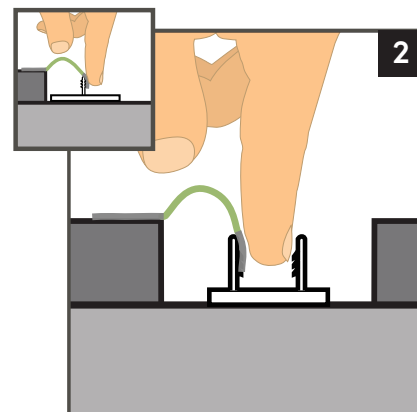
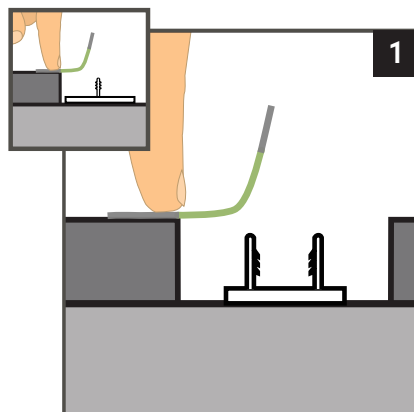
1. Apply tape to the floor, lining up green field with edge of flooring, meeting the corner with a square-cut end. Then press and seal bottom adhesive edge to floor.
2. Using your fingers, press a "valley" into the flooring expansion space. Then press and seal top adhesive edge to wall.
3. On a new section from the tape roll, make a mark 1-3/8 inch from end as shown.
4. Line up mark with edge of tape as shown. Press and seal from the red mark into the valley and up the wall as shown. Continue rolling out tape following steps 1 and 2.
5. Pull tape corner out as shown and press the upper adhesive strip straight into the corner. Note that the tape will not lay flat against the wall until you have equal valleys on both sides.
6. Pinch and press resulting flap in the corner flat against wall. Trim with scissors if needed. If there are any bulges in adhesive strip, repeat step 5.
7. When tape strip is flat against wall, press and seal the upper adhesive strip.
8. You are finished! Place molding as you normally would.

Placement of the tape may vary depending on the width of your flooring expansion space and the thickness of your molding.

For example, with a wide expansion space and a narrow baseboard, line the edge of the green zone a small distance away from the edge of the flooring so that the tape does not show after molding is placed. See example on right.

The instructions above are set for a 1/4-inch to 3/8-inch expansion space and a 1/2-inch to 5/8-inch thick molding. Always test tape placement by setting a piece of molding on the first portion of tape you lay, and adjust step 1 above accordingly.





1. Apply tape to floor, lining up green field with edge of flooring. Then press and seal bottom adhesive edge to floor.
2. Apply tape to inside of track prong, lining up green field with top of prong. Then press and seal bottom adhesive edge to prong.
3. Using your fingers, press a "valley" into the flooring expansion space.
4. Repeat steps 1–3 on opposing side for double-pronged tracks.
5. Place molding into track.

Placement of the tape may vary depending on the width of your flooring expansion space and the width of transition molding.

For example, with a wide expansion space and a narrow molding, line the edge of the green zone a small distance away from the edge of the flooring so that the tape does not show after molding is placed.

The instructions above are set for a 1/4-inch to 3/8-inch expansion space and a 1/2-inch to 5/8-inch or wider overhang. Always test tape placement by setting a piece of molding on the first portion of tape you lay, and adjust step 1 above accordingly.

For more information, call 1-800-33-PERGO.