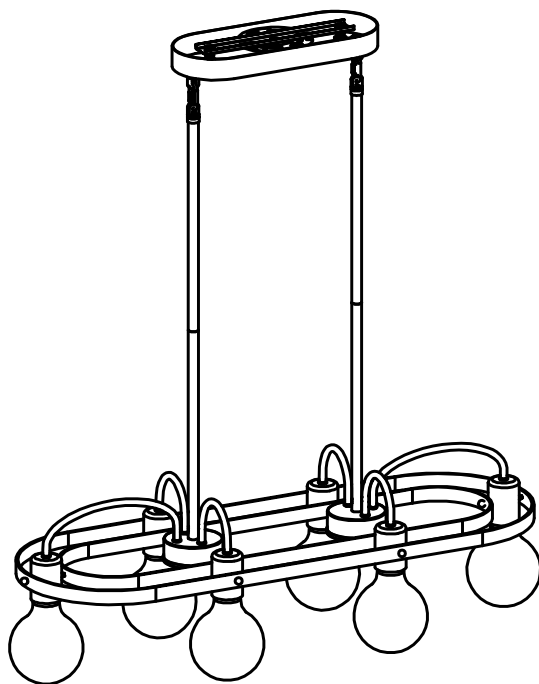


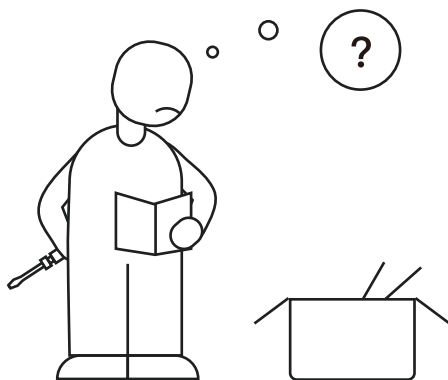
Manual Book

Chandelier



Scan for Installation Video

Contact Information

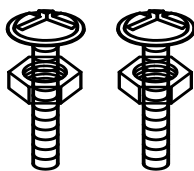


Please contact us with the following information:

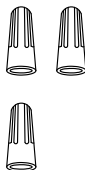
1. Screenshot of your order page, including product picture, name, and order ID number.
2. Problem details with pictures / short video if possible.

✉ **Email: homechandelier@qq.com**

Installation Kit



AA



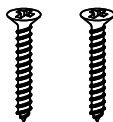
BB



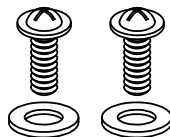
CC



DD



EE



FF

Part	Description	Quantity
AA	Canopy Screw with Nut	2
BB	Wire nut	3
CC	Pair of Gloves	1
DD	Cap Nut	2
EE	Wood Screw (optional)	2
FF	Machine Screw & Washer for Outlet Box (spares)	2

Note:

Some extra hardware may be included. The quantity listed above is the number required for installation.

Safety Rules

WARNING: BE SURE THE ELECTRICITY TO THE WIRES YOU ARE WORKING ON IS SHUT OFF; EITHER THE FUSE IS REMOVED OR THE CIRCUIT BREAKER IS TURNED OFF. TURNING THE POWER OFF USING THE LIGHT SWITCH IS NOT SUFFICIENT TO PREVENT ELECTRICAL SHOCK.

NOTE: The important safeguards and instructions appearing in this manual are not meant to cover all possible conditions or situations that may occur. It must be understood that common sense, caution, and care, are factors which cannot be built into any product. These factors must be supplied by the person(s) installing this unit.

READ & SAVE THESE INSTRUCTIONS

CAUTION: Before assembling the lighting fixture, please read the following chapters. If you feel you do not have enough electrical wiring experience, either refer to a do-it-yourself wiring handbook or have your lighting fixture installed by a qualified, licensed electrician. Remove the fixture and the mounting packages from the box and make sure that no parts are missing by referencing the illustrations on the installation instructions.

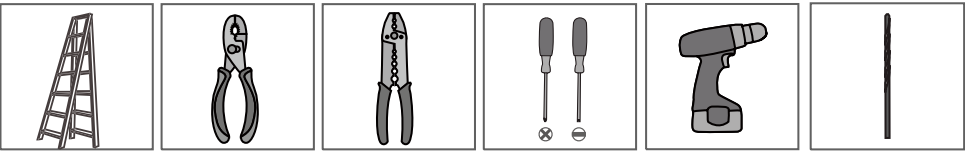
Be sure to read these installation instructions and review the diagrams thoroughly before installation.

LIGHT BULBS REQUIRED

This lamp uses 6 E26 bulbs, compatible with bulbs up to 60W. Fully dimmable when used with dimmable bulbs and compatible dimming switches (not included).

Installation Preparation

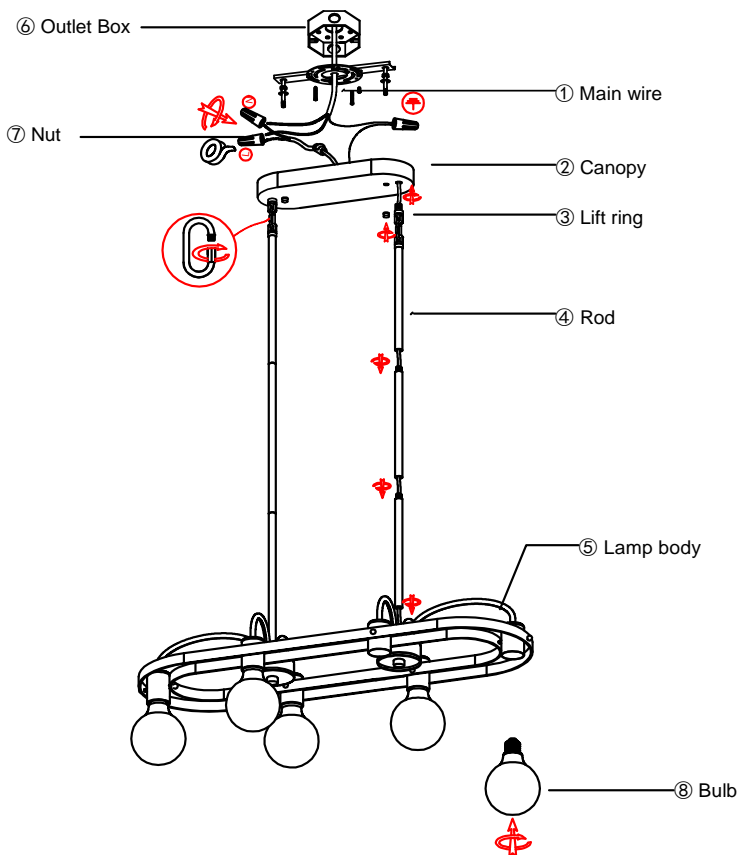
Tools You Need



- ☒ Ladder
- ☒ Pliers
- ☒ Wire Strippers
- ☒ Screwdrivers
- ☐ Power Drill (optional)
- ☐ Drill Bit (optional)

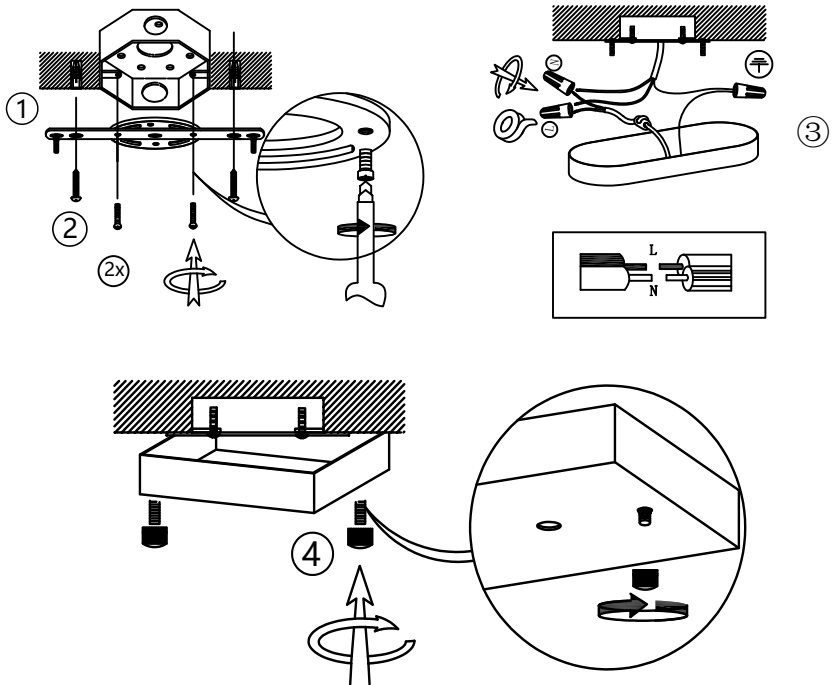
If mounting to a support structure, you will also need the optional tools.

Installation Step 1 (Assemble the Light)



Installation Step 2 (Hang and Wire)

1. Pass the main wire through the rod ④ and canopy ②, then fix the rods ④ on the lamp body ⑤.
2. Install the lift ring on the rod ④ and canopy ②.
3. Fix the bracket on the outlet box ⑥ and connect the wires as shown on page 5.
4. Install the E26 bulbs ⑧.



Note: Please test the fixture before installation to ensure it's working properly.

1. Turn off power at circuit box to avoid possible electric shock.
2. Attach Mounting Plate to junction box using mounting screws.
3. Connect fixture wires to house wires with Wire nut, and wrap the connection with electrical tape.
4. Attach canopy to the affixed mounting plate using cap nut.

Trouble Shooting

1. Missing/Broken Parts

- Make a list of the missing/broken parts according to the packing list, take photos for broken parts, then email us for free replacements.

2. Bulbs Do Not Light Up

- Check your power and switch to make sure it's power on.
- Check the bulb to make sure it's installed correctly.
- Change a new bulb.
- Check the wires to make sure they are connected correctly.

3. Bulbs Flicker/Noisy Operation

- Check the bulb to make sure it's installed correctly.
- Change a new bulb.
- Make sure your bulb is dimmable if you use a dimmer switch.

4. Could Not Install/Assemble

- Take photos of the ceiling/fixture, contact seller for technical support.

Clean And Care

To clean, wipe the fixture with a soft cloth. Spraying from chemical cleaners can discolor the finish of the fixture. Do not use scouring pads, powders, steel wool, or abrasive paper to clean this fixture.

Ordering Parts

Keep this manual for future reference, and in case replacement parts are needed. Available parts can be ordered from the place of purchase. Use exact wording from diagrams when ordering parts.