

# SMO™ Side Mount Garage Door Opener

# Owner's Manual



## IMPORTANT:

- Please read this manual and the enclosed safety materials carefully!
- Safety Beam Sensor **MUST BE INSTALLED** and aligned properly.
- Periodic checks of the openers are required to ensure safe operation.
- Save this manual for future reference.
- This Equipment meets or exceeds all Federal, State and UL325 Safety requirements.
- For more information updates and useful links, please visit our website <https://www.skylinkhome.com>



## DO NOT RETURN TO THE STORE, CONTACT OUR CUSTOMER SERVICE

1-800-304-1187 M-F 9am-5pm Online Chat: [www.skylinkhome.com](http://www.skylinkhome.com)  
[support@skylinkhome.com](mailto:support@skylinkhome.com)



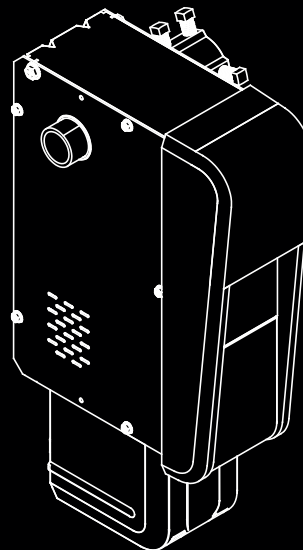
**Watch Quick Setup Videos at**

[www.skylinkhome.com/videos](http://www.skylinkhome.com/videos)

or **scan**



**For residential use only**



# INTRODUCTION

## Important Safety Information

Congratulations on your purchase of a Skylink Garage Door Opener. The documentation provided with your opener has been carefully designed and organized to make the assembly, operation, and continued maintenance of your product as easy and safe as possible. Make sure the garage door opener is installed, operated, maintained, and tested in strict accordance with the instructions and warnings contained in this manual. Read and follow all guidelines and operating instructions before the first use of this product. Store the manual in a safe, easily accessible location for future reference.

### WARNING

#### To prevent possible SEVERE INJURY OR DEATH:

- DO NOT install opener on an unbalanced door. Call a trained garage door technician if garage door binds, sticks or is unbalanced.
  - Disable all locks and remove all ropes connected to the garage door before installing the garage door opener.
  - DO NOT connect the opener to any source of power until instructed to do so.
  - Door Control must be installed within sight of door, at a minimum height of 5ft and away from all moving parts of the door.
  - DO NOT try to remove, repair or adjust springs or anything to which door spring parts are fastened.
  - Repair and adjustments must be made by a trained garage door technician.
  - Turn off power before removing opener cover.
  - Opener must be properly grounded.
  - Auto-Close Timer and Orbit Home Smartphone app can only be used with sectional doors.
- \* These features cannot be used with one-piece doors.

## Safety Symbol Overview

### WARNING

This warning symbol is used to indicate possible mechanical or electrical hazards that may cause serious injury or death.

### CAUTION

This warning symbol is used to indicate the possibility of damage to the garage door or opener.

## CONTENTS

|  |    |
|--|----|
| <b>Introduction</b> .....                            | 1  |
| <b>Pre-Installation Checklist</b> .....              | 3  |
| <b>Parts And Accessories</b> .....                   | 4  |
| <b>Important Instructions</b> .....                  | 6  |
| <b>Assemble the SMO</b> .....                        | 8  |
| Attach the Coupler to the Garage Door Opener.....    | 8  |
| Attach Mounting Bracket to Garage Door Opener.....   | 9  |
| <b>Installation</b> .....                            | 10 |
| Position and Mount the Garage Door Opener.....       | 10 |
| Attach the Emergency Release Rope and Handle.....    | 12 |
| Install Door Lock.....                               | 13 |
| Attach the Cable Tensioner.....                      | 14 |
| Install the Battery Backup (Optional).....           | 15 |
| Install the door control.....                        | 16 |
| Wire the door control to the garage door opener..... | 17 |
| Install the Safety Beam Sensors.....                 | 18 |
| Wire the Safety Beam Sensors.....                    | 19 |
| Connect Power.....                                   | 20 |
| Aligning the safety beam sensors.....                | 21 |
| Install CarHome Button Remote.....                   | 22 |
| Install the Wireless Safety Beam Sensors .....       | 24 |
| <b>Programming</b> .....                             | 25 |
| Programming remote / keypad.....                     | 25 |
| Programming the travel limits.....                   | 25 |
| Vehicle Programming (In-Car Remote).....             | 26 |
| Test safety reversal system.....                     | 27 |
| Test safety beam sensors.....                        | 27 |
| <b>Operation</b> .....                               | 28 |
| Manually Open / Close Garage Door.....               | 28 |
| Remote Control.....                                  | 29 |
| Keypad.....  | 30 |
| DeLuxe Wall Console offers 4 functions.....          | 32 |
| Erase Remote Control / Keypad from Memory.....       | 32 |
| <b>Maintenance</b> .....                             | 33 |
| <b>Wi-Fi Connectivity</b> .....                      | 34 |
| <b>Troubleshooting - Error Code</b> .....            | 35 |
| <b>Troubleshooting</b> .....                         | 37 |
| <b>Important Safety Instructions</b> .....           | 38 |
| <b>FCC &amp; ISED</b> .....                          | 39 |
| <b>Warranty</b> .....                                | 40 |

# INTRODUCTION(continued)

## IMPORTANT INSTALLATION INSTRUCTIONS

WARNING - To reduce the risk of severe injury or death:

1. READ AND FOLLOW ALL INSTALLATION INSTRUCTIONS.
  2. Install only on a properly operating and balanced garage door. An improperly balanced door has the potential to inflict severe injury. Have a qualified service person make repairs or adjustments to cables, spring assemblies, and other hardware before installing the opener.
  3. Remove or disable all pull ropes, and all locks connected to the garage door before installing the opener.
  4. Where possible, install the door operator 2.14 m (7 ft) or more above the floor. For products with an emergency release, mount the emergency release at least 1.83 m (6 ft) above the floor, and avoid contact with vehicles to prevent accidental release.
  5. Do not connect the door opener to the source of power until instructed to do so.
  6. Locate the control button: (a) within sight of the door, (b) at a minimum height of 1.53 m (5 ft) from the ground, landings, steps, or any other adjacent walking surface so small children are not able to reach it, and (c) away from all moving parts of the door.
  7. Install the Entrapment Warning Label next to the control button in a visible location. Install the Emergency Release Marking. Attach the marking on or next to the emergency release.
  8. After installing the opener, the door must reverse when it contacts a 38-mm (1-1/2-inch) high object (or a 2x4 board laid flat) on the floor.
  9. To reduce the risk of electric shock, this equipment has a grounding type plug, that has a third (grounding) pin. This plug will only fit into a grounding-type outlet. If the plug does not fit into the outlet, contact a qualified electrician to install the proper outlet, do not attempt to change the plug yourself.
  10. The operator is not equipped for permanent wiring. To install a proper receptacle if one is not available, contact a licensed electrician.
- DISCONNECT POWER BEFORE SERVICING.
11. For Indoor Use Only.
  12. Only use this opener with a sectional door.
  13. WARNING: To reduce the risk of injury to persons – Only enable timer feature when installed with sectional door.
  14. Do not remove or visually obstruct the Entrapment Warning Label. Mount the label adjacent to the wall control. Mount the wall control out of children's reach.

## PRE-INSTALLATION CHECKLIST



**Sectional Door**

### **Check the following items before assembling the opener:**

- Identify the door type: sectional door.
- Ensure your garage door is **balanced** and is not sticking or binding.
- Here is how to **check the door balance**.
- From outside the garage, slowly open the door all the way and close it all the way- DOOR SHOULD NOT BIND OR RUB.
- Raise the door halfway up – DOOR SHOULD STAY IN PLACE, SUPPORTED ENTIRELY BY ITS SPRING.

### **IMPORTANT**

- **If the garage door fails either of these tests, have a qualified garage door professional adjust or repair the door.**
- If the garage door is lightweight (made with frame and skin, not solid), it must be braced or reinforced before installing the opener (including the door frame). Check with a qualified service professional for a door reinforcement kit.
- If you do not have an access door in addition to the garage door, you should install an emergency key release kit.
- With the garage door closed, check the alignment of the garage floor. The gap, if any, should be no more than 1/4" (6 mm). If the gap is larger than this, repair the floor or door before installing the opener.

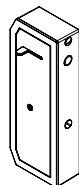


# PARTS AND ACCESSORIES

Save the carton and packing material until the installation and adjustment is complete. Instructions for the accessories will be attached to the accessory and are not included in this manual. The images throughout this manual are for reference only, your product may look different.

## Accessories

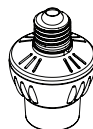
- J1.** Door Lock
- J2.** Wall Console
- J3.** Light Bulb Module\*
- J4.** Safety Beam Sensors
- J5.** Wireless Safety Sensors\*
- J6.** Wireless Keypad\*
- J7.** Backup Battery\*
- J8.** Remote Control - MM-318
- J9.** Keychain/Visor Remotes  
- MK 318\*
- J10.** CarHome Button Remote
- J11.** Wireless Wall Console\*
- J12.** Plug-in Lamp Module  
- PM-318\*



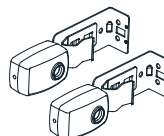
**J1**



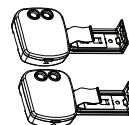
**J2**



**J3\***



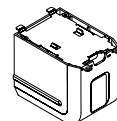
**J4**



**J5\***



**J6\***



**J7\***



**J8**



**J9\***



**J10**



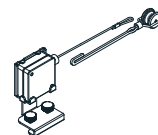
**J11\***



**J12\***



**J13**



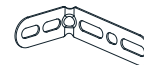
**J14 x2**

## Parts

- J13.** Coupler
- J14.** Cable Tensioner & Slide Set
- J15.** Handle & Rope
- J16.** Mounting Bracket
- J17.** Screws 14-10x2"



**J15**



**J16**



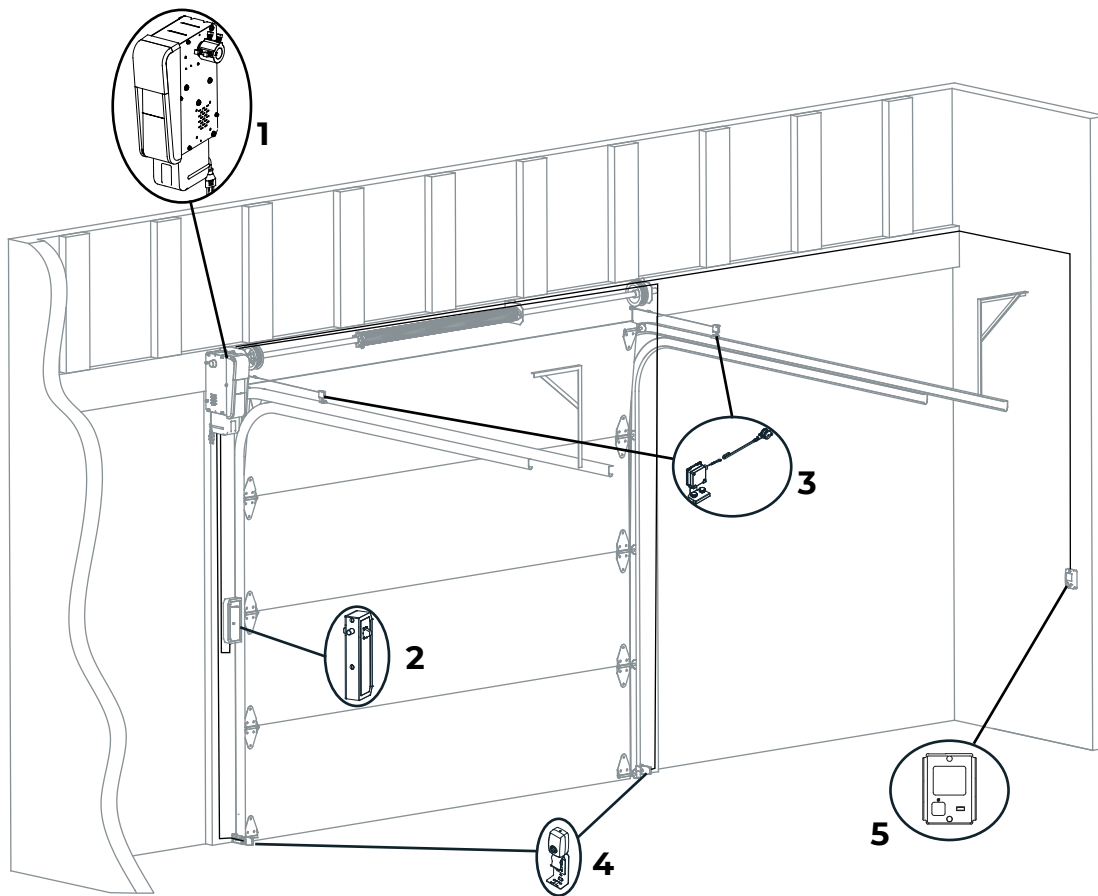
**J17 x2**



## NOTE

\* Note that accessories will depend on the model you purchased. If anything is missing, carefully check the packing material.

## PARTS AND ACCESSORIES<sub>(continued)</sub>



### Accessories

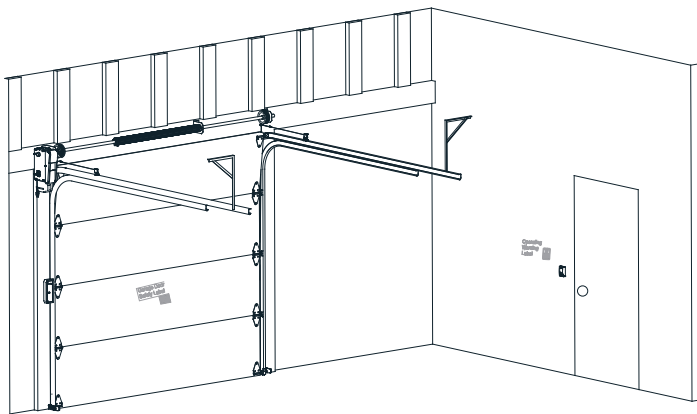
1. Assemble the SMO page 8-12
2. Install Door Lock - J1 see page 13
3. Install Cable Tensioner and Slide Set - J14 see page 14
4. Install Safety Beam Sensors Kit - J4 or T5
5. Install Wall Console - J2

# IMPORTANT INSTRUCTIONS

## To reduce the risk of severe injury or death:

1. Read and follow all installation instructions.
2. Check with the door manufacturer to determine if additional reinforcement is required to support the door prior to the installation of the garage door opener.
3. Install garage door opener only on a properly balanced garage door.  
An improperly **balanced door could cause serious injury.**  
Have a qualified service professional make repairs/adjustments to garage door cables, spring assemblies, and other hardware before installing the opener.
4. Remove all ropes and disable all locks connected to the garage door before installing the opener.
5. Mount the emergency release handle 6' (1.8 m) above the floor.

6. Do not connect the opener to a power source until instructed to do so.
7. Locate the door control:
  - a. Within sight of the garage door.
  - b. Out of reach of children at a minimum height of 5' (1.5 m).
  - c. Away from all moving parts of the door.
8. Place entrapment warning label on wall next to garage door wall control. Mechanical means shall be used to secure the label to a surface which the adhesive will not adhere.
9. Install the Emergency Release Handle on the emergency release rope.
10. Place the manual release and safety reverse test labels in plain view on the inside of the garage door.
11. Upon completion of the installation, the door must reverse when it comes in contact with a 1 1/2" (3.8 cm) high object on the floor (or a 2x4 laid flat at the center of the door) and when the infrared safety beam is blocked.



**A**n overall view of a completed garage door opener system installed on a sectional door.

## IMPORTANT INSTRUCTIONS<sub>(continued)</sub>

### Planning:

Survey your garage area to see if any of the conditions below apply to your installation. Depending on your requirements, additional materials may be required.

### This garage door opener is compatible with:

Doors that use a torsion bar and springs. The torsion bar must be 1 inch (2.5 cm) in diameter.

4-6 inches (10-15 cm) drums, not to be used on tapered drums over 6 inches (15 cm). 3 to 3.9 inch (7.6cm ~ 9.9cm) drums may be used on doors up to 430lbs. (195Kgs)

High lift (up to 8.4 inches (21.3 cm) wide) and standard lift sectional doors up to 14 feet (4.3 m) high.

Doors up to 18 feet. (5.5 m) wide.

Doors up to 180 sq. ft. (16.7 sq.m).

*Review or inspect the proposed installation area. The garage door opener can be installed on the left or right side of the door.*

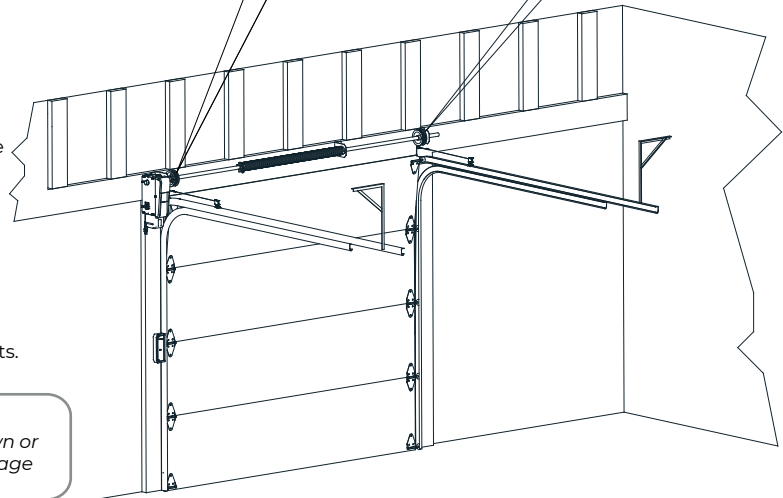
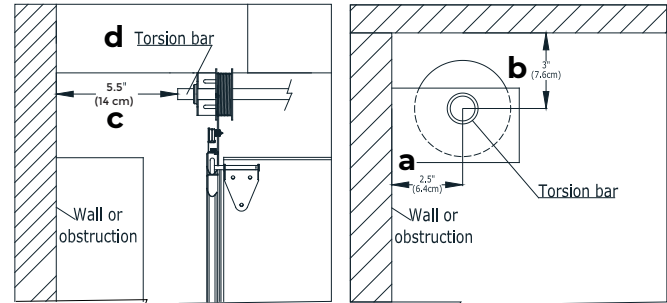
*Select the side that meets the requirements listed below.*

- Must have a minimum of 2-1/2 inches (6.4 cm) between the garage wall and the center of the torsion bar.
- Must have a minimum of 3 inches (7.6 cm) between the ceiling and the center of the torsion bar.
- Must have a minimum of 5.5 inches (14 cm) between the side garage wall (or obstruction) and the end of the torsion bar.
- The torsion bar must extend at least 1-1/2 inches (3.8 cm) past the bearing. This may vary depending on your installation requirements.



### NOTE

*Inspect the torsion bar while the door is raised and lowered. It is important that there is no noticeable movement up and down or left and right. If the movement is not corrected, the life of the garage door opener will be greatly reduced.*



# ASSEMBLE THE SMO

## 1. Attach the Coupler to the Garage Door Opener

***To avoid installation difficulties, do not run the garage door opener until instructed to do so.***

The garage door opener can be installed on either side of the door (see Planning section page 7).

The illustrations shown are for installation on the left side.

1. Loosen the set screws. (Use a Open End Wrenches or Drill)
2. Attach coupler to the garage door opener motor shaft. The side of the coupler with the larger hole should be placed on the motor shaft.

Ensure that the coupler is seated all the way on motor shaft until a full stop is reached.

3. Position the coupler so the screws are facing out and are accessible when attached to the torsion bar.

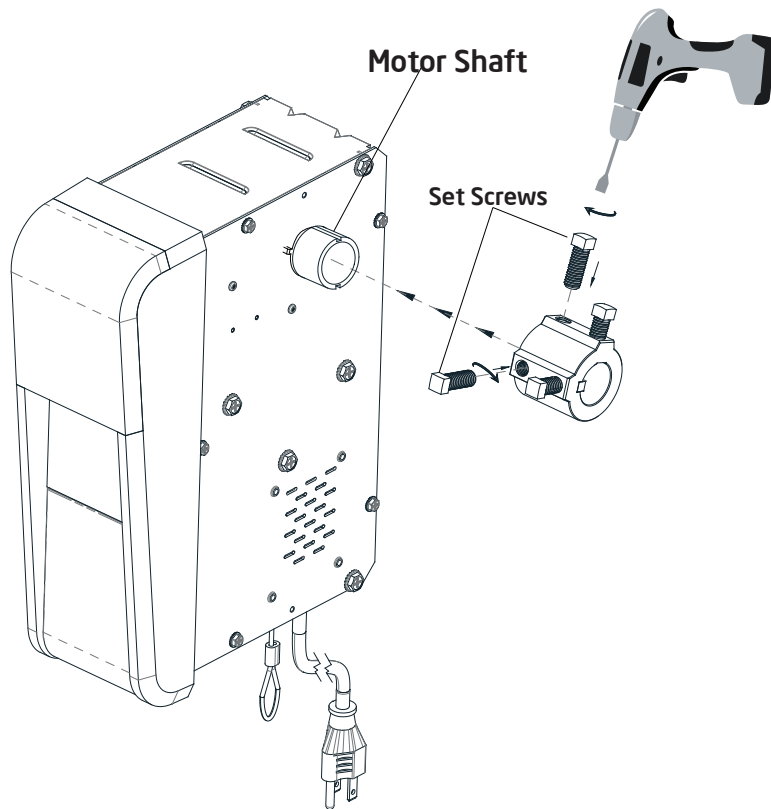
4. Securely tighten the 2 square head set screws closest to the motor shaft by turning the screws 1/4 - 1/2 turn after making contact with the motor shaft.

### WARNING

- To prevent possible **SERIOUS INJURY** or **DEATH**, the coupler **MUST** be properly tightened.
- The door may not reverse correctly or limits may be lost due to coupler slip.

### WARNING

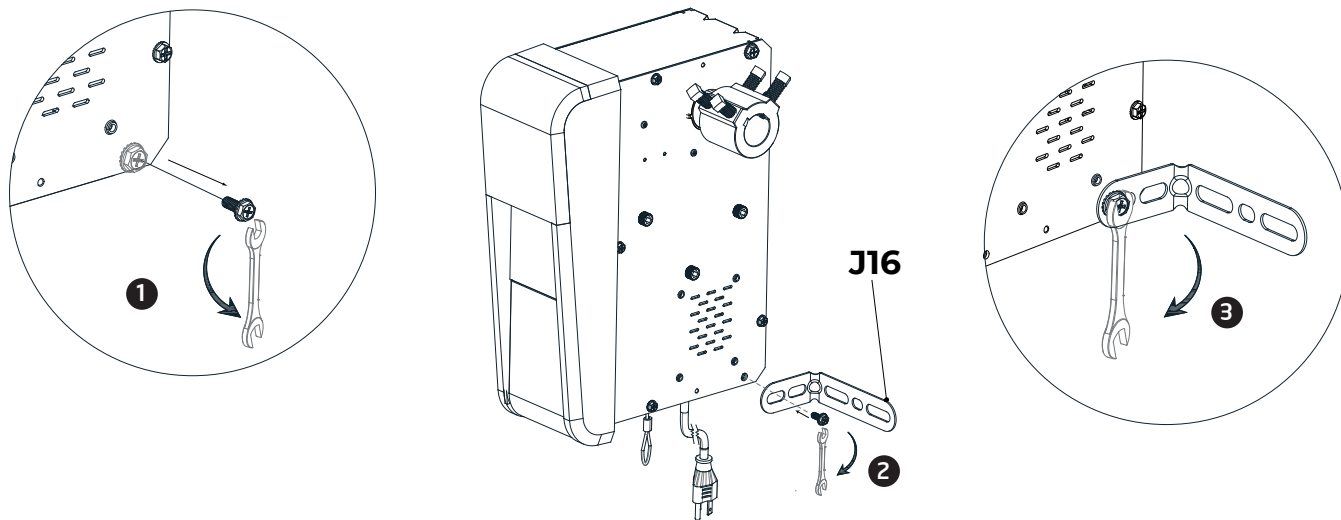
Recommended maximum tightening torque is 20N.m



## ASSEMBLE THE SMO<sub>(continued)</sub>

### 2. Attach Mounting Bracket to Garage Door Opener

Loosely attach slotted side of mounting bracket to the same side of the garage door opener as the coupler, using screws provided.



#### NOTE

*Do not tighten screws until instructed.*

# INSTALLATION

## Step 1. Position and Mount the Garage Door Opener



**NOTE.** For additional mounting options refer to the accessories page.

1. Close the garage door completely.
2. Slide the garage door opener onto the end of the torsion bar. If the torsion bar is too long or damaged, you may need to cut the torsion bar.

**Ensure the coupler does NOT touch the bearing.**

3. Use a level to position and vertically align the garage door opener. Verify that the mounting bracket is located on a solid surface such as wood, concrete, or door/flag bracket. If installing on drywall, the mounting bracket **MUST** be attached to a stud.
4. When the garage door opener is properly aligned, mark the mounting bracket holes. If necessary, tighten coupler screws on the torsion bar to hold garage door opener in place while marking holes.



**NOTE.** The garage door opener does not have to be flush to wall.

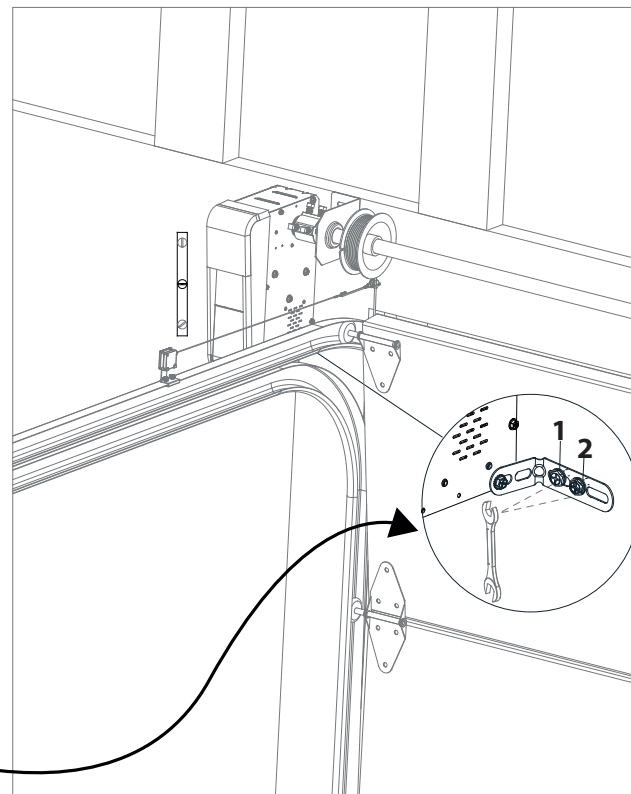
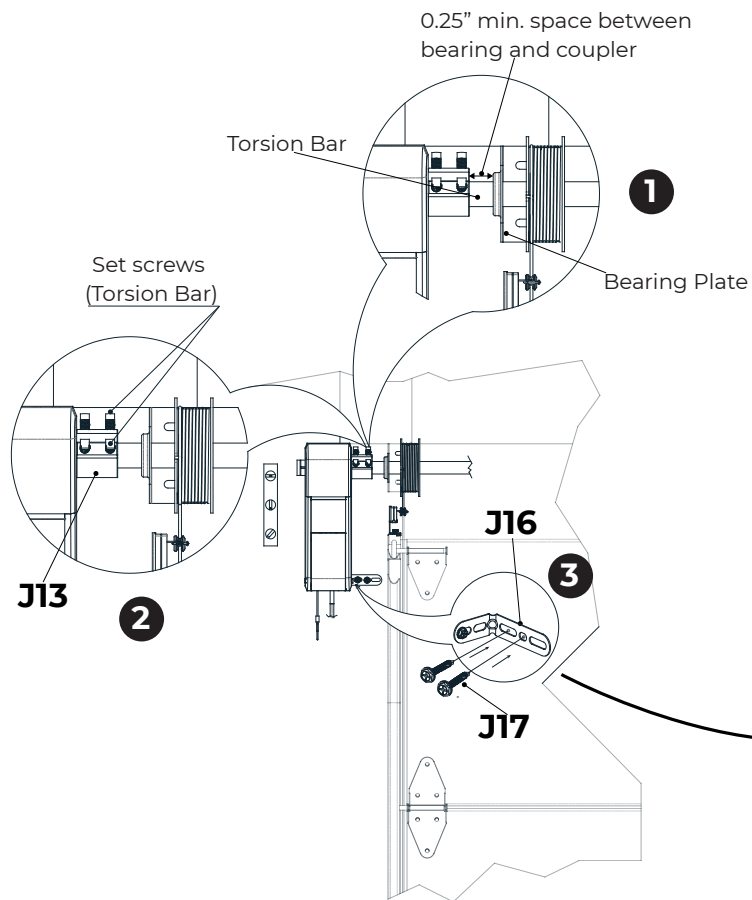
5. Remove the garage door opener from torsion bar. Drill  $\frac{3}{16}$  inch pilot holes at the marked locations. Drill through metal door rail plates if necessary.
6. Slide the garage door opener back onto the torsion bar until pilot holes align with bracket.
7. Tighten the 2 square head set screws on the torsion bar. For a hollow torsion bar, tighten screws  $\frac{3}{4}$  - 1 full turn after making contact with the bar. For a solid shaft torsion bar, tighten screws  $\frac{1}{4}$  - no more than  $\frac{1}{2}$  turn after making contact with the shaft. If installing on a keyed torsion bar, **DO NOT** tighten the screws into the keyway.
8. Secure the mounting bracket to the wall and to the garage door opener. Use the 14-10 x 2" screws to secure the mounting bracket to the wall.



### WARNING

- Concrete anchors **MUST** be used if mounting bracket into masonry.
- **NEVER** try to loosen, move or adjust garage door, springs, cables, pulleys, brackets or their hardware, **ALL** of which are under **EXTREME** tension.
- **ALWAYS** call a trained garage door technician if garage door binds, sticks, or is out of balance. An unbalanced garage door might **NOT** reverse when required.
- The garage door opener **MUST** be mounted at a right angle to the torsion bar to avoid permanent wear on the coupler.

## INSTALLATION(continued)



### NOTE.


After fastening the screws to the wood or wall, align the leveler and tighten the nut on the side of the bracket. Tighten the screw in position 1 before tightening the screw in position 2

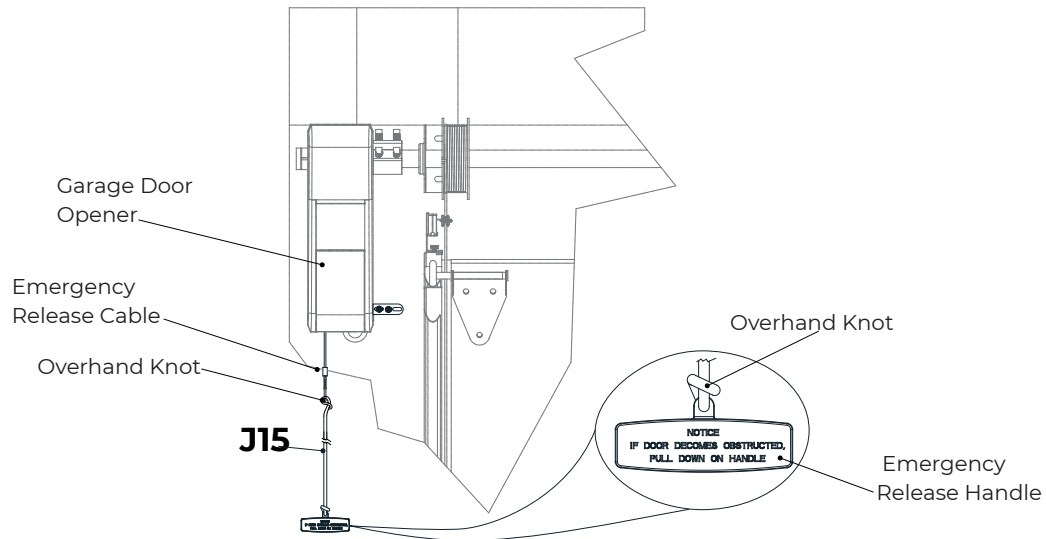


## INSTALLATION(continued)

### Step 2. Attach the Emergency Release Rope and Handle

1. Thread one end of the rope through the hole in the top of the red handle so "NOTICE" reads right side up. Secure with an overhand knot at least 1 inch (2.5 cm) from the end of the rope to prevent slipping.
2. Thread the other end of the rope through the loop in the emergency release cable. Adjust rope length so the handle is no higher than 6 feet (1.83 m) above the floor. Secure with an overhand knot

 **NOTE.** If it is necessary to cut the rope, heat seal the cut end with a match or lighter to prevent unraveling.

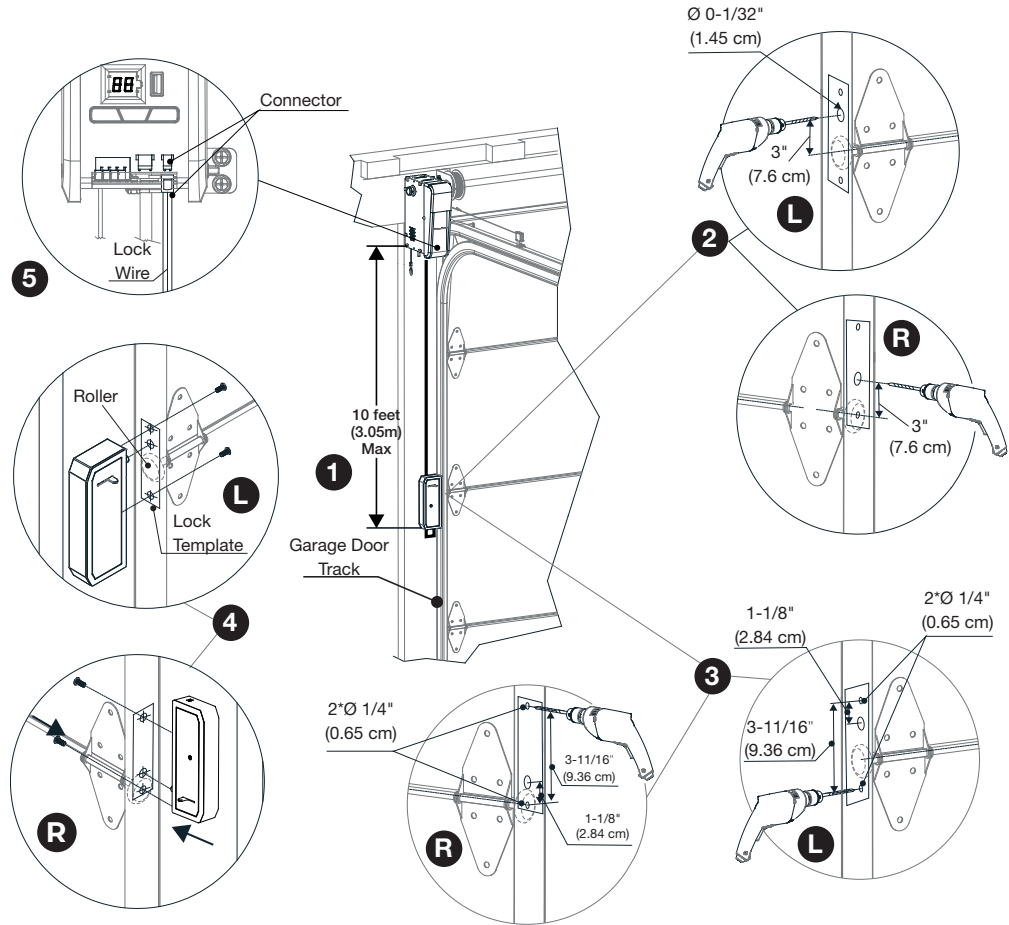


# INSTALLATION(continued)

## Step 3. Install Door Lock

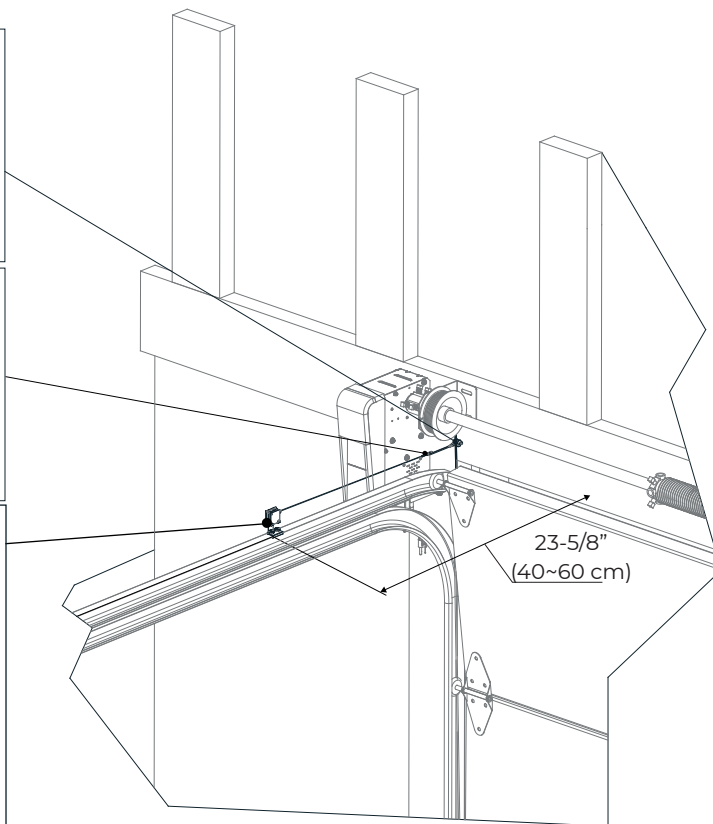
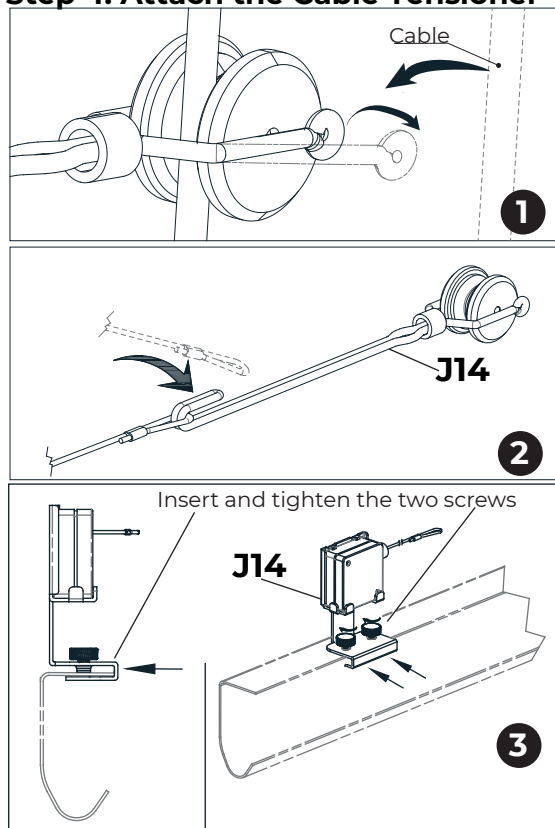
The door lock is used to prevent the garage door from being manually opened once the door is fully closed.

1. The door lock must be mounted within 10' (3.05 m) of garage door opener with approximately a 3 inch (7.6 cm) distance between the center of a door roller and the hole for the door lock bolt. If possible, mount on same side as garage door opener. The second roller from the bottom is ideal for most installations.
2. Ensure rail surface is clean and attach lock template to track.
3. Drill holes as marked on the template.
4. Fasten door lock to the outside of the garage door track with hardware provided.
5. Run the power wire to the garage door opener from the door lock. Connect the wire to the garage door opener and door lock. Secure the power wire to the wall.
6. Plug the connector into the garage door opener.



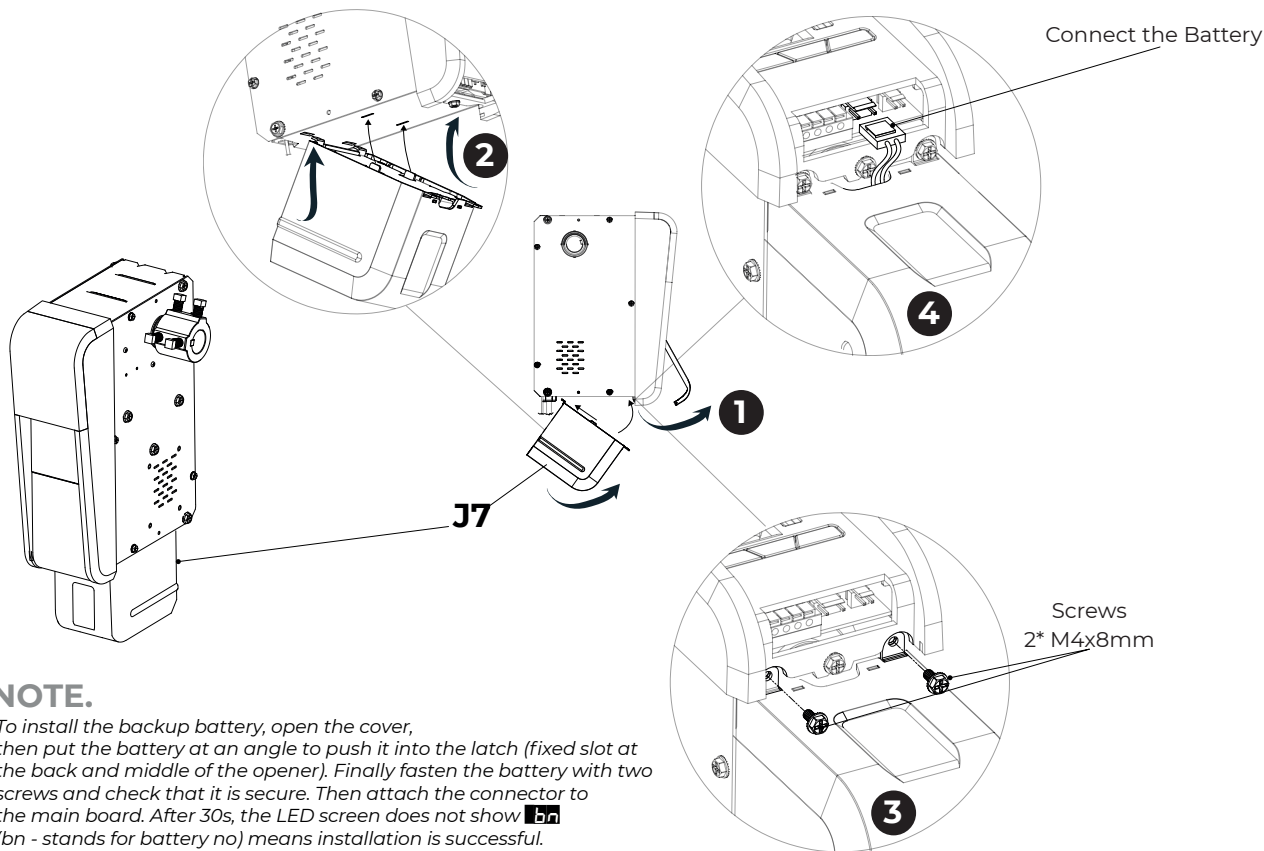
## INSTALLATION(continued)

### Step 4. Attach the Cable Tensioner



## INSTALLATION(continued)

### Step 5. Install the Backup Battery (Optional)



## INSTALLATION(continued)

### Step 6. Install the door control

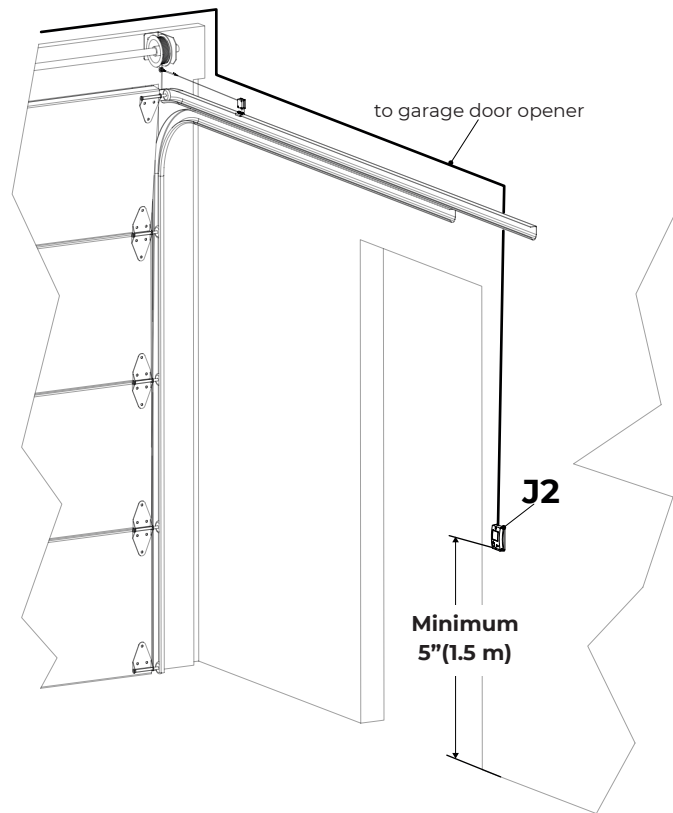
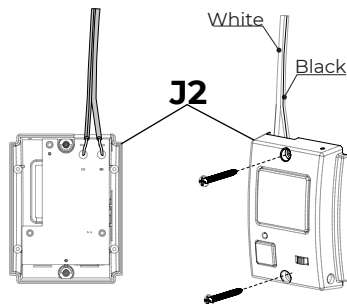


#### WARNING

- Install door control within sight of garage door.
- Door control must be at least 5 ft (1.5 m) above the floor.
- Never permit children to operate door control.
- Always keep garage door in sight until door is fully closed.
- Do not operate door unless it can be seen clearly.


#### Deluxe Wall Console

1. Remove the insulation from one end of the wire and separate the wires.
2. Connect one wire to each of the two screws on the back of the door control. The wires can be connected to either screw.
3. Position the door control at least 5 ft (1.5 m) above the floor. Mark the locations of the 2 mounting holes and drill two 5/32 inch holes.
4. Install the screws and drywall anchors (if necessary) and secure the door control onto the wall.

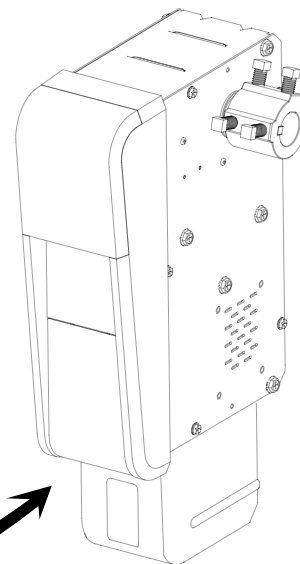
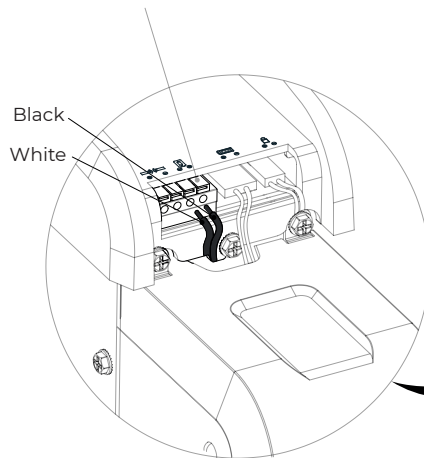


## INSTALLATION(continued)

### Step 7. Wire the door control to the garage door opener

1. Uncoil the wires and run them from the door control to the garage door opener. If you attach the wire to the wall and ceiling with staples (not provided), do not pierce the wire with the staple as this may cause a short or an open circuit.
2. Remove the insulation from the end of the wire near the garage door opener.
3. Connect the 2 wires to the door control terminals  on the garage door opener. To insert or release wires from the terminal, push in the tab with screwdriver tip. The wires can be connected to either terminal.

*To insert or release wire, push in the tab with a screwdriver tip*



# INSTALLATION(continued)


## Step 8. Install the Safety Beam Sensors

The safety beam sensors can be installed in 3 different ways:

- 1) Door Track Installation (Preferred and easiest)
- 2) Wall Installation
- 3) Floor Installation


### Door Track Installation:

Slide the curved portion of the sensor bracket around the outside edge of the door track. Snap into place so the sensor bracket is against the track.

 **NOTE.** Ensure both sensor brackets are the same height from the floor.

### Wall Installation:

1. Remove the curved portion from the sensor bracket.
2. Position the sensor bracket against the wall with the sensor facing the door. Make sure there is enough clearance for the beam to be unobstructed. Mark 2 mounting holes.

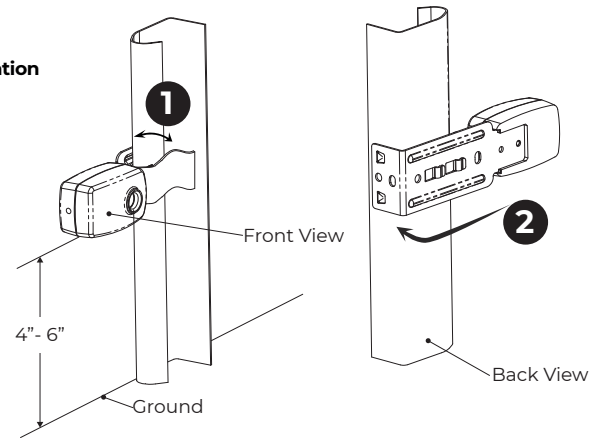
 **NOTE.** If additional clearance is needed, wooden blocks can be used. Make sure each bracket has the same amount of clearance so they align properly.

3. Drill 3/16 inch pilot holes for each sensor bracket and attach the sensor brackets to the wall using lag screws.

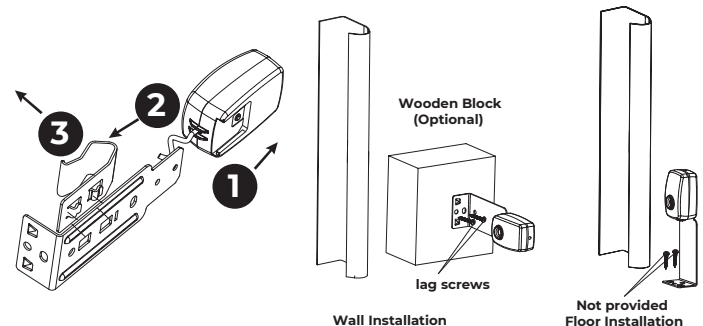
### Floor Installation:

1. Remove the curved portion from the sensor bracket.
2. Place both sensor brackets on the floor facing each other with the same distance from the wall without any obstruction.
3. Attach the sensor brackets to the floor using concrete anchors (not provided).

### Door Track Installation

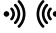


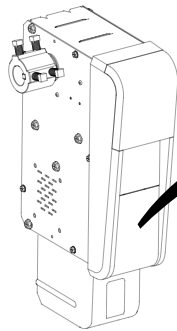
### Wall / Floor Installation



## INSTALLATION(continued)

### Step 9. Wire the Safety Beam Sensors

1. Run the wire from both sensors to the garage door opener. Attach the wire to the wall and ceiling with the wire clips.
2. Remove insulation from each set of wires. Separate the wires. Twist the two non-marked wires together. Twist the two marked wires together.
3. Connect 2 pairs of twisted wires to the safety beam sensor terminals  on the garage door opener. To insert or remove the wires from the terminal, push in the tab with a screwdriver tip.  
Each pair of twisted wires can be connected to either terminal.

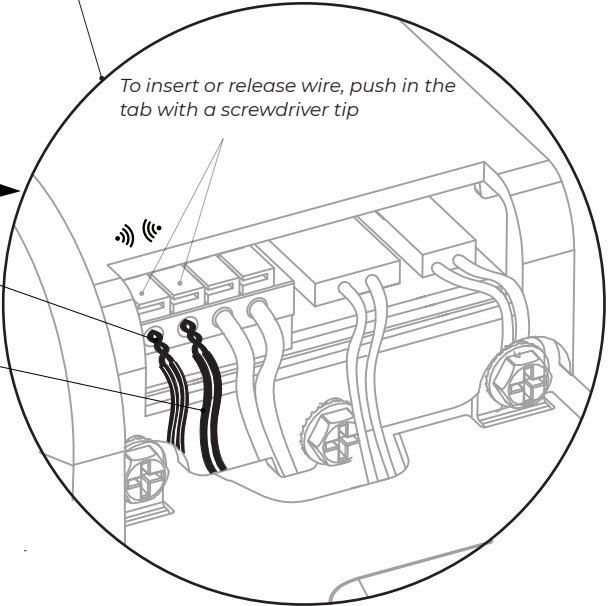


#### Wire the Safety Beam Sensors

To insert or release wire, push in the tab with a screwdriver tip

Twist marked  
wires together  
(Black)

Twist non-marked  
wires together  
(White)





# INSTALLATION(continued)

## Step 10. Connect Power



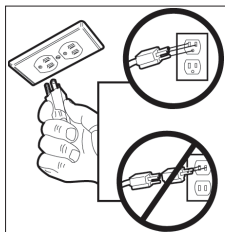
### WARNING

To prevent possible **SERIOUS INJURY** or **DEATH**.

- Disconnect power before removing cover for permanent wiring.
- Never use an extension cord, 2-wire adapter or change plug in any way.
- All wiring must be in compliance with all local electrical and building codes.

Plug garage door opener into a grounded outlet. If a grounded outlet is not available, contact a qualified electrician to install a proper grounded outlet.

**DO NOT ACTIVATE THE OPENER UNTIL INSTRUCTED**



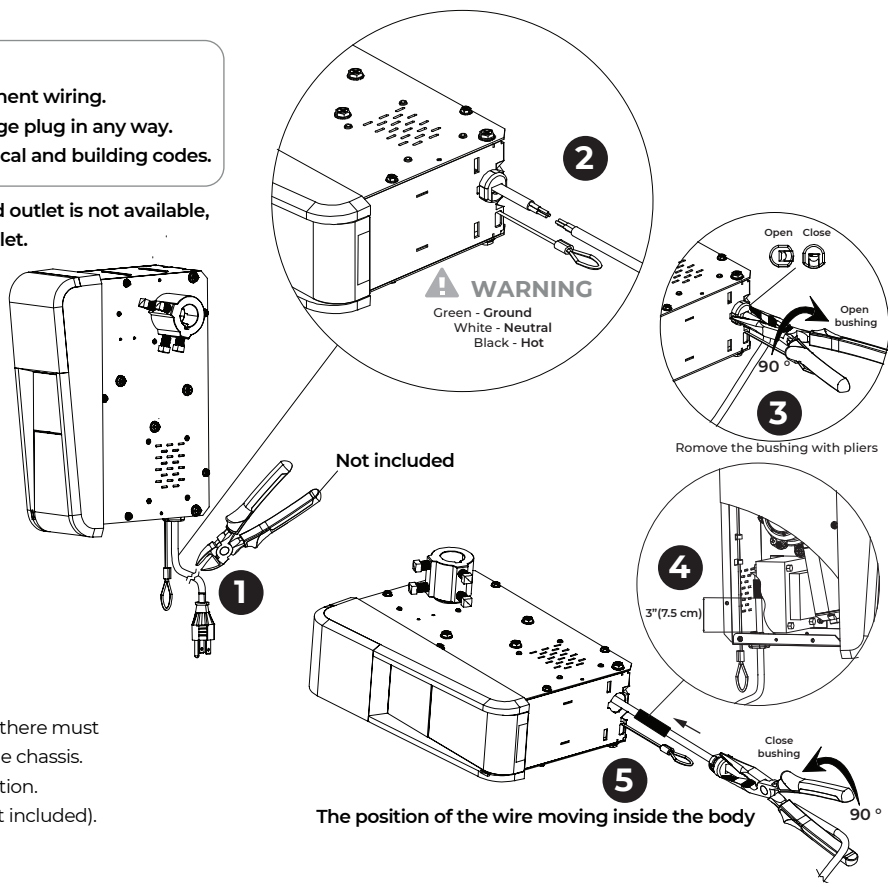
There are 2 options for connecting power:

#### 1. AC Plug (Preferred & easiest)

1. Plug in the garage door opener into a grounded outlet.
2. Do not run garage door opener at this time.

#### 2. Permanent Wiring by electrician

1. Cut existing power cord outside chassis.
2. The wire connections must be made inside the chassis and there must be at least 3"(7.5 cm) of new power supply line wire inside the chassis.  
Connect the conduit to the opener with the proper termination.  
Connect conduit wiring to opener wiring with wire nuts (not included).
3. The opener must be grounded.



## INSTALLATION(continued)

### Step 11. Aligning the safety beam sensors

Safety beam sensors must be installed and aligned correctly for the garage door opener to operate properly.



#### NOTE.

*Red LED is the transmitting sensor,  
Blue LED is the receiving sensor.*

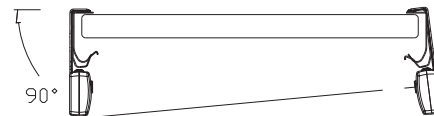
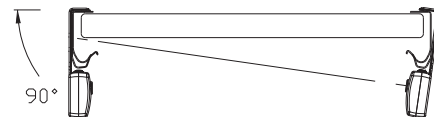
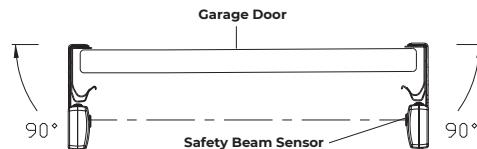
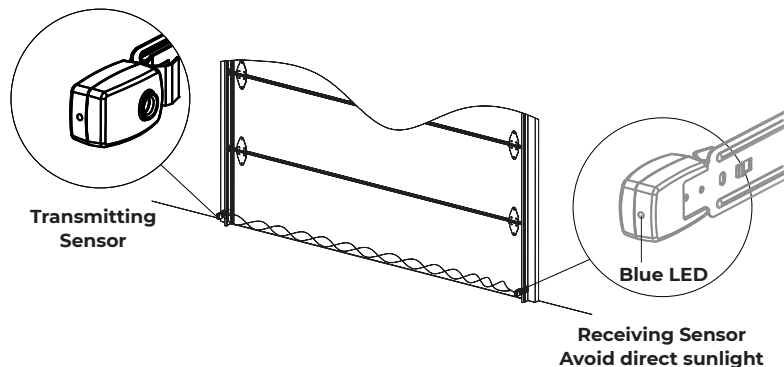
1. Both safety sensors should be facing each other without any obstruction.
2. Check to make sure the LEDs in both sensors are glowing steadily. The LEDs in both sensors will glow steadily if they are aligned and wired correctly. Further alignment is necessary if any LEDs are not glowing steadily.

#### If the Red LED is not glowing, please check the following:

1. Make sure the garage door opener is plugged into AC power.
2. Make sure the sensor wires are not shorted / broken.
3. Ensure the sensor has been wired correctly. Twist together White non-marked wires and insert into one safety sensor terminal. Twist together White marked wires and insert to the other safety sensor terminal.

#### If the Blue LED is not glowing, please check the following:

1. Make sure the sensors are aligned. Reposition the sensor bracket until the Blue LED is glowing steadily.
2. Make sure the sensor wires are not shorted / broken.



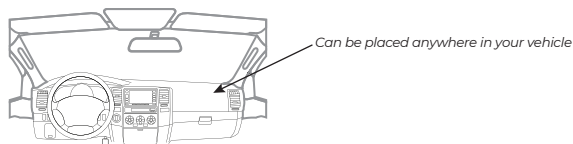
# INSTALLATION(continued)

## Step 12. Install CarHome Button Remote

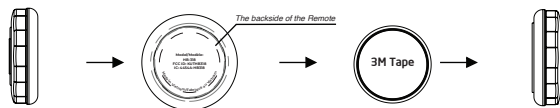
CarHome Button Remote is a small discreet remote button that can be placed anywhere in your vehicle that will allow you to operate the garage door easily.

### Install CarHome Button Remote

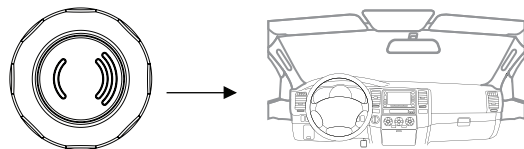
1. Determine the installation location



2. Attach one side of the 3M tape to the backside of Carhome Button Remote

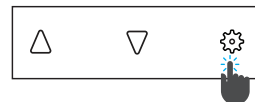


3. Attach the Remote to the installation location (step 1) using the other side of the 3M tape



### How to pair and control with opener

1. Press the setting button on the opener device



2. The segment LED on the opener device's will display P



3. Press the  or  button on the remote



4. If the opener device emits a beep and the segment LED on the opener device does not show P, it means the set-up was successful. You can now control the garage opener with the HB-318.



Press the programmed button to open the door


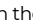




Press the programmed button to close the door

# INSTALLATION(continued)




## Passcode ON or OFF

By default, the CarHome Button Remote is set to passcode OFF. If you want to turn ON the passcode, follow these steps:

1. Press and hold the  button (about 6 seconds) until the LED blinks quickly. Then release the  button the LED will turn off.
  2. Enter your password. If this is the first time turning passcode ON the default factory password is 222 ( press the  button 3 times )
  3. Press the  button to confirm. The LED will blink 1 time if your password is correct and the LED will blink 3 times if your password is incorrect.
- To turn OFF the passcode, repeat the steps above.





## Forgot passcode and Factory Reset:

If you forgot your passcode or would like to change the passcode to factory default, follow the steps below.

1. Press and hold button  (about 25 seconds) until the LED blinks slowly . Then release the button .
2. Press the button  3 times. If the factory reset is successful the LED will blink 1 time. The passcode default is 222 and passcode is ON.

## Change passcode

Only change the passcode when the HB-318 has passcode feature ON.

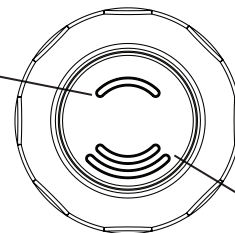
1. Press and hold the  button (about 10 seconds) until the LED blinks slowly. Then release the  button the LED will turn off.
2. Enter your old password (Ex. 222), then press the  button to confirm. If the entered password is correct the LED will blink 1 time then you enter your new passcode and press  button to confirm. The LED will blink 1 time if the password was changed successfully. If the entered passcode is incorrect the LED will blink 3 times and exit the setup program.



### NOTE.

*The passcode can be 2 to 8 digits.*

Number 1



Number 2

# INSTALLATION(continued)

## Step 13. Install Wireless Safety Sensors

The safety beam sensors can be installed in 3 different ways: Door Track Installation, Wall Installation, Floor Installation

### Door Track Installation:

Slide (1) and clip (2) the mounting bracket onto the garage door track. Ensure the sensor is mounted between 4"(10cm) and 6"(15 cm) above the ground. Follow the same procedure to install the sensor on the other track ensuring the sensors are facing each other.

### Wall Installation:

For wall mounting, use a wooden block to increase depth providing enough clearance for the sensor beam to be unobstructed.

### Floor Installation:

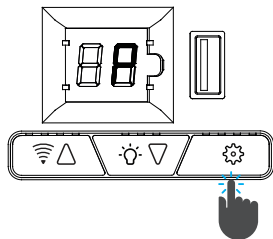
For floor mounting, use a wooden block to elevate the sensor brackets, if necessary. Ensure the sensor is no higher than 6"(15 cm) above floor. Fasten the screws to the floor with concrete anchors (not included).



### NOTE.

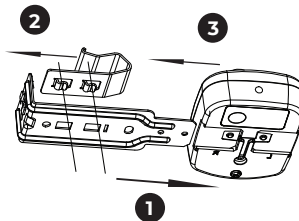
Remove the spring bracket from the mounting bracket if installing to the wall or floor.

1. Slide the sensor from the mounting bracket.
2. Slide the spring bracket from the mounting bracket.
3. Re-install and secure the sensor to the mounting bracket.

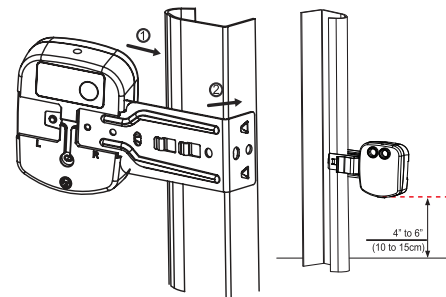


### Programming Wireless Safety Beam Sensor

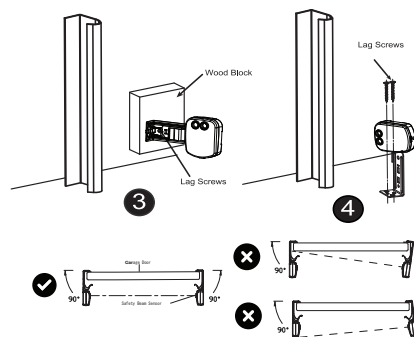
1. Press and hold the [SET] button (the right button) on the SMO until the segment LED shows "P."
  2. Press and hold the set button on the Transmitter ID\_002 for approximately 5 seconds; the red LED will blink.
- If the pairing is successful, the red LED of the Transmitter will flash quickly, and the segment LED on the SMO will turn off.



### Door Track Installation



### Wall / Floor Installation



# PROGRAMMING

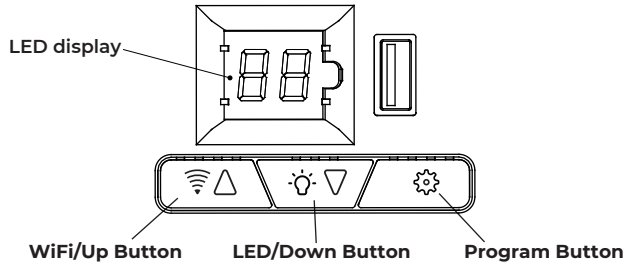
## Step 1. Programming remote / keypad

1. Press and release the "⚙️" button, the LED display shows "P".
2. Press the button on the remote that you would like to program.  
For keypad, enter the [PIN] [#]. Refer to page 30 for more information.
3. Once the remote / keypad is programmed, the LED display will be off and you will hear one beep.



### NOTE.

Each programming step has a 30-second time limit for completion after the function is initiated. Restart the step as many times as necessary to complete the programming. Each button on each remote must be programmed separately.



## Step 2. Programming the travel limits



### WARNING

- Incorrect adjustment of garage door travel limits will interfere with proper operation of safety reversal system.
- After making any adjustment, both safety beam sensors and safety reversal system must be tested.

1. Press and hold the "⚙️" button for 5 seconds until the LED display shows "1".



### NOTE.

Do not release the "⚙️" button when you see "P" on the LED display.

2. Press and hold the **UP** button ▲ until the door is in the desired fully open position.



### NOTE.

Use the **DOWN** button if the door opens too far. Press **UP/DOWN** button momentarily to adjust the open travel limit as necessary.

3. Once the door is in the desired fully open position, press and release the "⚙️" button. The LED display will show "2".

## PROGRAMMING(continued)

4. Press and hold the DOWN button ▼ until the door is 2" from the ground. Press DOWN button ▼ momentarily until the door is in the desired fully closed position.
5. Once the door is in the desired fully closed position, press and release the "⚙️" button. The LED display will show "3".
6. Press the remote or door control to open the door. The door will open to the fully open position. The LED display will show "4".
7. Press the remote or door control to close the door. The door will close to the fully closed position. The LED display will be off.
8. You have programmed the travel limits successfully.



### NOTE.

*Door should rest on the floor until the weather strip is partially compressed. Damaged doors or uneven doors may not seal properly. Repair these conditions to achieve a proper seal. DO NOT set the door close limit too far down so that the lift cable becomes loose.*

## Step 3. Vehicle Programming(In-Car Remote)



### WARNING

- Before programming, make sure that people and objects are out of the way of the garage door. The garage door will open and close during programming. DO NOT proceed with vehicle programming if people or pets are in the path of the garage door.

1. Clear the In-Car Remote by holding on to the first and third buttons for 20 seconds. Clearing the In-Car Remote will erase all previously programmed garage door openers.
2. Press and hold the Skylink remote button for 10 seconds until the LED flashes rapidly.
3. Choose the button on the In-Car Remote that will be used to open the door. Press and hold this chosen button until the indicator on the In-Car Remote blinks slow then fast. Once it blinks fast, release this button.

## PROGRAMMING(continued)

### Step 4. Test safety reversal system

With the garage door open, lay a 2x4 board flat on the floor, centered under the garage door.

Press the door control to close the door. The door **MUST** stop and reverse when it makes contact with the 2x4 board.

If the door stops before contact with the board or if it does not reverse on contact with the obstruction, increase the down travel limit, then repeat the test above.

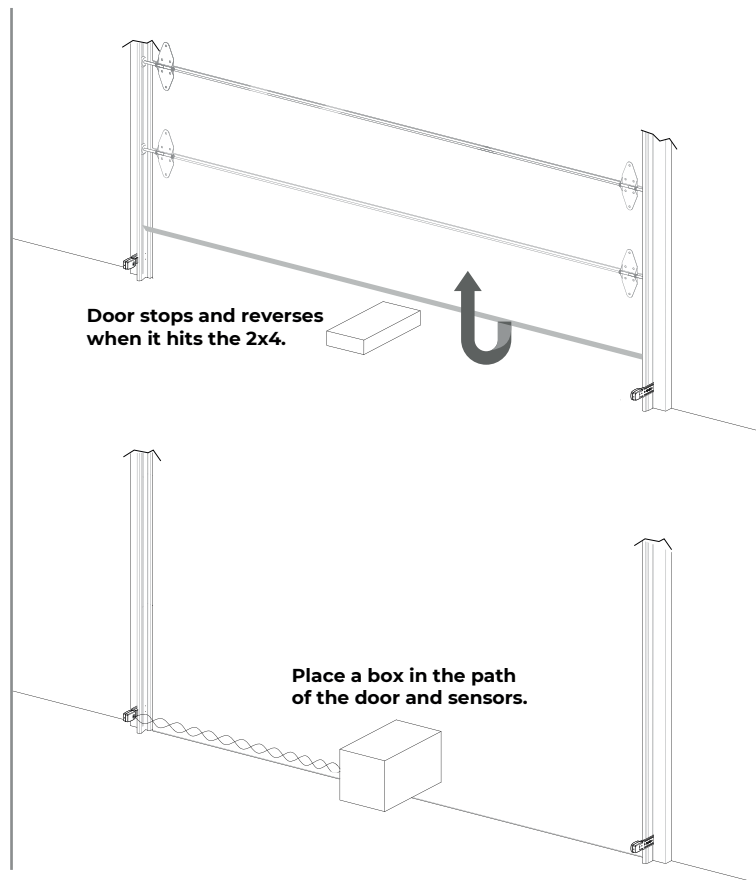
Repeat this process as needed until the door passes this test.

### Step 5. Test safety beam sensors

With the garage door open, place the garage door opener carton box in the path of the door.

Press the door control to close the door, the door will not move more than an inch (2.5 cm) and the LED display will show "b".

You may also check both safety sensor LEDs (red and blue). They should be on steadily. This indicates the system is working properly. If one of the LEDs is not on steadily, please refer to "Aligning the safety beam sensors" on Page 21 to troubleshoot.





# OPERATION

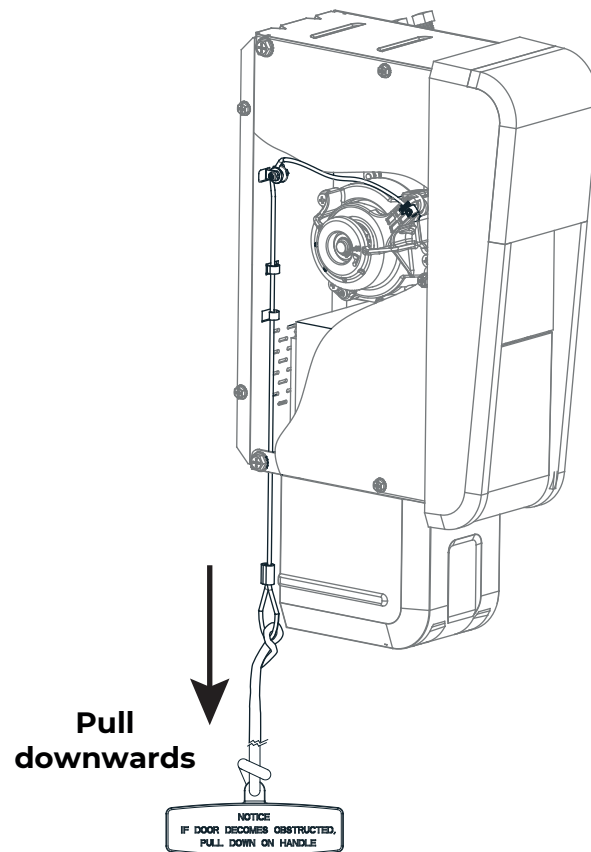
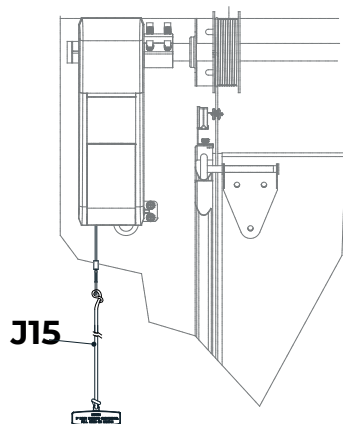
## Manually Open / Close Garage Door

To open the door manually, first disconnect (disengage) the gear:

1. Disengage the door lock.
2. Fully close the door if possible.
3. Pull the emergency release handle downward until a small click sound is heard from the garage door opener.
4. The door can now be opened manually.

To re-connect (engage) the gear:

1. Pull the emergency release handle downward until a small click sound is heard from the garage door opener.
2. The door is now re-connected to the gear.



# OPERATION(continued)

## Remote Control

To operate the garage door opener with the remote, press the desired button on the remote control. The remote can operate at a distance of up to 100 m. If the remote control does not operate the garage door opener, please follow instructions "Programming remote / keypad" on Page 25 to program the remote control to the garage door opener.

### Passcode Protection (ONLY for 3-Button Remote)

You can enable the passcode protection on the 3-button remote. Once enabled, passcode must be entered to unlock the remote before it can operate the garage door opener. The factory default setting is passcode function disabled.

#### To enable passcode protection:

1. Press and hold buttons 1 and 3 simultaneously for 6 seconds until the LED flashes.
2. Enter the passcode (default passcode is 2 2 2), i.e. press button 2 three times.
3. Press and hold buttons 1 and 3 simultaneously, LED blinks once, passcode function is now enabled.

#### To change the passcode:

1. Press and hold buttons 1 and 3 simultaneously for 10 seconds until the LED changes from flashing quickly to flashing slowly.
2. Enter the old passcode (default passcode is 2 2 2).
3. Press and hold buttons 1 and 3 simultaneously, LED blinks once, enter the new passcode (from 2-8 digits). If LED flashes 3 times, you have entered the incorrect passcode. Start again from step 1.
4. After entering the new passcode, press and hold buttons 1 and 3 simultaneously to confirm.

### Toggle between enable/disable passcode protection:

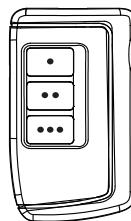
1. Press and hold buttons 1 and 3 simultaneously for 6 seconds until the LED flashes.
2. Enter the passcode (default passcode is 2 2 2), i.e. press button 2 three times.
3. Press and hold buttons 1 and 3 simultaneously, LED blinks once, passcode function is toggled, i.e. from disable to enable, or enabled to disabled.

### Forgot Passcode and Factory Reset:

If you forgot your passcode or would like to change the passcode to factory default 2 2 2, follow the steps below.

1. Press and hold buttons 1 and 2 for 10 seconds until the LED flashes.
2. Release both buttons. Passcode function is now disabled and passcode is set to factory default 2 2 2.

**J8**



**J9**

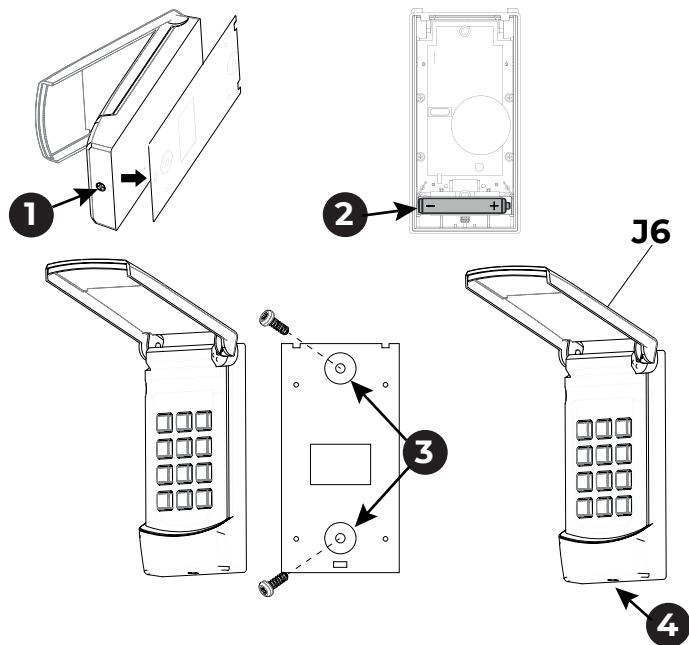


## OPERATION(continued)

### Keypad

#### Keypad Installation:

1. Undo the screw on the bottom of the keypad and remove back cover.
2. Insert the battery.
3. Secure the back cover with 2 screws at the selected location.
4. Slide the keypad unit to the back cover and secure it with the bottom screw.



#### To operate the garage door opener with the keypad:

**Enter the [PIN] + [#]. The factory default PIN is 0 0 0 0.**

**You can enter [0 0 0 0 #] to operate the garage door opener.**

To change the PIN, follow the instructions below:

1. Enter the current **PIN + [\*]**, i.e. **[0 0 0 0 \*]** if you are changing from factory default PIN.
2. Enter a new PIN (2 to 8 digits) + **[\*]**, such as **[1 2 3 4 \*]**.
3. Re-enter the new PIN again, **[1 2 3 4 \*]**.
4. If the new PIN is accepted, keypad will emit 3 beeps.
5. Try with the new PIN to operate the garage door opener by entering **[New PIN] + [#]**.

It is not necessary to reprogram the keypad to the garage door opener after changing the PIN.



#### NOTE.

If the keypad does not operate the garage door opener, please follow instructions "Programming remote / keypad" on Page 25 to program the keypad to the garage door opener.

## OPERATION(continued)

### Keypad(continued)

#### Reset PIN to factory default

1. Undo the screw on the bottom of the keypad and remove the battery.
2. Press and hold **[\*]** and **[#]** while battery is removed.
3. While holding on to both buttons, insert the battery.
4. Keep holding both buttons for about 5 seconds until you hear a long beep.

The PIN is now reset to **0 0 0 0**. Attach the keypad to the back plate and secure the screw at the bottom.

Re-program the keypad to the garage door opener following the instructions "Programming remote / keypad" on Page 25.


#### Enable Multiple Doors Operating Mode

This keypad can operate up to 4 Skylink garage door openers.

To enable multiple doors mode:

1. Enter **[PIN] [\*] [9] [#]**.
2. You will hear 2 beeps indicating keypad is now in multiple doors mode.

Program keypad in Multiple Doors Mode to Garage Door opener

1. Press " " button on the garage door opener, LED display will show "**P**".
2. Enter **[PIN] [#] [Door #]**, Door # is either **[1], [2], [3] or [4]**

#### To control Multiple Doors:

Enter **[PIN] [#] [Door #]**.

For example, to control door 2, enter **[PIN] [#] [2]**

#### Disable Multiple Doors:

1. Enter **[PIN] [\*] [0] [#]**.
2. Press **[PIN] [#]**. You will hear 2 beeps indicating keypad is now in single door mode.



#### NOTE.

If the keypad does not operate the garage door opener, please follow instructions "Programming remote / keypad" on Page 25. to program the keypad to the garage door opener.

## OPERATION(continued)

### Deluxe Wall Console offers 4 functions:

**Door Control:** Press this button to open/close the garage door.

**Light Control:** Press the light button to turn the garage door opener light on or off. Once it is turned on, it will stay on until this light button is pressed again. The garage door opener light will also be on during a door open / door close cycle, it will stay on for approximately 3 minutes.

**Remote Lock:** Slide to the lock position to disable the garage door opener from being activated by remote controls and wireless keypad. Slide to the unlock position to resume normal operation.

**Auto-Close Timer:** Auto-Close Timer allows the garage door to be closed automatically after a specific period of time. This feature can only be used for sectional doors. It CAN NOT be used on a one-piece door.

To disable Auto-Close Timer, place the slide switch setting to the "Off" position to disable this feature.

To enable Auto-Close Timer, place the slide switch to the desired time setting, this is how long the door will remain open before auto closing:

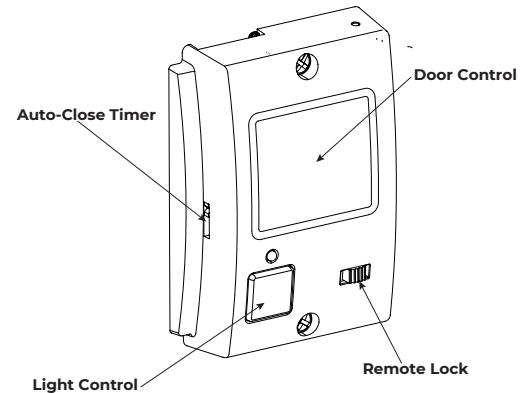
3 – 3 Minutes

10 – 10 Minutes

30 – 30 Minutes

1. If Auto-Close Timer is enabled, the timer will start once the door is open. The LED display will show "A" to indicate Auto-Close Timer is counting down. The garage door opener will emit a beeping and flashing alert before closing the door. If the garage door cannot be closed completely for any reason, such as an obstruction is detected, or safety beam sensors are blocked, the opener will try to close the door up to 5 times. When the obstruction is cleared or safety beam sensors are unblocked, the opener will close the door when activated.

2. If you would like to disable Auto-Close while it is counting down, press the door control button once. It will disable the Auto-Close for that cycle. Pressing the door control button again will close the door immediately.



### Erase Remote Control / Keypad from Memory

To erase all remote controls and keypads, follow the instructions below.

1. Press and hold the "⚙️" button for 15 seconds, until the LED display flashes "E", release "⚙️" button.
2. Press "⚙️" button once to confirm, the "E" will disappear on the LED display. All remote controls and keypads are now erased.
3. Reprogram any remote control/keypad you would like to use.

# MAINTENANCE

Perform the following maintenance tasks monthly to ensure garage door opener operates smoothly.

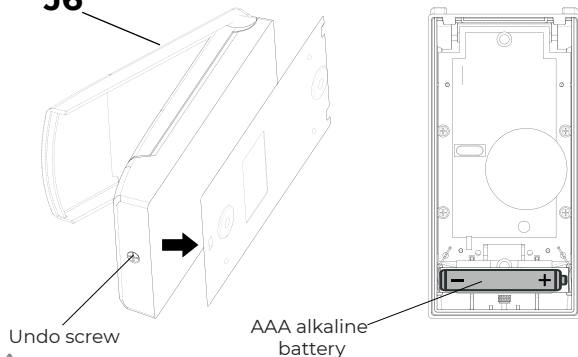
- Test the safety beam sensor and safety reversal system monthly, refer to page 27.
- Open and close door manually to ensure door operates properly.
- Check the balance of the door, if it is unbalanced, contact a trained garage door technician.
- Lubricate door hardware such as rollers and hinges with lightweight general purpose grease when needed.

## Battery Replacement – Keypad

Replace the keypad with one AAA alkaline battery.

1. Undo the screw on the bottom of the keypad and remove the back cover.
2. Replace the battery with one AAA alkaline battery and check the polarities.
3. Secure the plastic housing with the screw on the bottom.

**J6**



## ! WARNING

**To prevent possible serious injury or death:**

- Never allow small children near batteries
- If battery is swallowed, notify a doctor immediately
- Dispose of old batteries promptly and properly

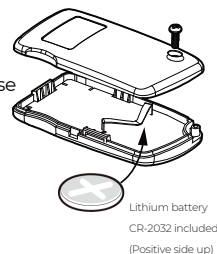
## Battery Replacement - Remote Control

All remotes come with battery installed. To replace the battery, follow the instructions below.

It is time to change the battery when the red on the remote does not turn on when either button is pressed.

To replace the battery:

1. Undo the screw on the back of remote. The bottom case will then come off.
2. Take out the old battery.
3. Place the new battery in position.
4. Close the cover and reinsert the screw.



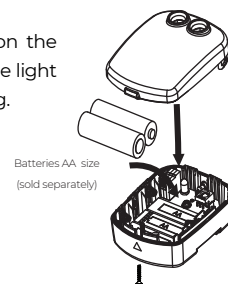
## Battery Replacement - Wireless Safety Beam Sensor

To install or replace the battery in the Safety Beam Sensor, follow the instructions below.

It is time to change the battery when the LED on the safety beam sensor flashes every 10 seconds and the light on the opener will flash when the door starts closing.

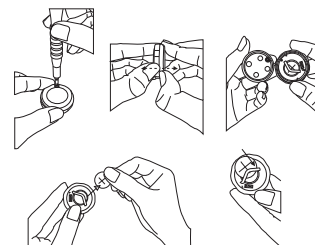
To replace the battery:

1. Undo the screw on the back of the sensor.
2. Take out the old batteries.
3. Place the new batteries in position.
4. Close the cover and reinsert the screws.



## Battery Replacement - Carhome Button Remote

1. Remove the screw at the bottom of the remote. Then proceed to detach the remote into two parts.
2. Replace the battery by gently pushing out the old battery from the battery slot and replacing it with a new battery.



*Note: Using CR2032 and BR2032 batteries for the best controller performance.*

# Wi-Fi CONNECTIVITY

## Smartphone Control - Wi-Fi

Smartphone Control allows you to control and monitor your garage door opener with the smartphone app “Orbit Home”.



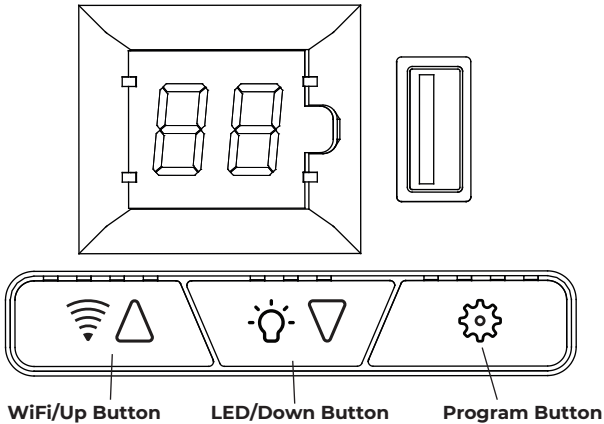
**Requirements:**

- 1. 2.4GHz Wi-Fi Network, 802.11 b/g/n in the garage (5GHz network not supported) with broadband internet connection.
- 2. Password for Wi-Fi Network.
- 3. Mobile device with **iOS** or **Android** with **Orbit Home App**.

**To setup Wi-Fi adapter:**

- 1. Red LED on the right side of the LED display should be steadily on.
- 2. Download the app from either **iOS App Store** or **Google Play Store**, “Orbit Home”.
- 3. Setup your account and add the garage door opener following the instructions on the **Orbit Home app**.

The garage door opener will emit a beeping and flashing alert when closing the garage door with the smartphone app. This is a safety feature to alert anyone near the garage that the door is about to close. This alert cannot be disabled. If the garage door cannot be closed completely for any reason, such as obstruction being detected, or safety beam sensors being blocked, the opener will reverse to a fully open position.



### Wi-Fi Adapter LED Indication

| LED  | STATUS   |
|--|--|
| Red On Steadily                              | Powered but not connected to Wi-Fi                 |
| Red Flashing                                 | Advanced Wi-Fi Setup                               |
| Blue On Steadily                             | Connected to Wi-Fi                                 |
| Blue Flashing                                | Quick Connect Wi-Fi Setup                          |
| Red – Blue Alternating Flashing Continuously | Connected to home network but not internet server. |

# TROUBLESHOOTING - ERROR CODE

## LED INDICATOR

### Programming

**P** Programming wireless control

**4** Learn door close force

**1** Set door open travel limit

**2** Set door close travel limit

**3** Learn door open force

**E** Set Erase wireless control

**A** Auto closer activated

### Connection

Safety Beam

Backup Battery

Wall console

Door Lock

### Troubleshoot

**R** Remote Locker

**C** Continuous Flashing, Wall button wires shorted

**M** Motor running for Over 60 sec

**O** Over Force

**b** battery dead

**S** Safety beam blocked

**d** disengage

**b** battery no

### Buttons

Pair Wifi / Up

Pair Light / Down

Set






Please refer to the Installation Quick Guide/ User Manual for programming details

www.skylinkhome.com

| LED LIGHT FLASHING | LED DISPLAY | SYMPTOM  | SOLUTION  |
|--------------------|-------------|--|---|
| 10 Flashes         |             | Safety Beam Sensors not functioning properly when door is closing.       | <ul style="list-style-type: none"> <li>- Check safety beam sensors alignment.</li> <li>- Check for any obstacles blocking safety beam path.</li> <li>- Check sensors LEDs to troubleshoot further.</li> </ul> Refer to "Aligning the safety beam sensors" on Page 21. |
| 15 Flashes         |             | Door is not fully closed or fully open because force exceeded the limit. | <ul style="list-style-type: none"> <li>- Check operating condition of the door, ensure the door can operate smoothly.</li> <li>- Re-program travel limits if problem persists.</li> </ul>   |
| 3 Flashes          |             | The door control is in lock mode, remote and keypad cannot function.     | Unlock "Remote Lock"  on the door control.  |



## TROUBLESHOOTING - ERROR CODE

| LED LIGHT FLASHING  | LED DISPLAY  | SYMPTOM                                      | SOLUTION  |
|---------------------|--|--|---|
| Continuous Flashing |   | Door control wires are shorted.              | Check the door control wiring, ensure the 2 wires are not shorted on both ends, the door control terminal and the door opener terminal.   |
| 6 Flashes           |   | Door open or close cycle exceeds 60 seconds. | <ul style="list-style-type: none"> <li>- This is a safety requirement to prevent a door open/close cycle exceeding 60 seconds.</li> <li>- Check door for binding, lubricate rollers and/or hinges.</li> <li>- Check operating condition of the door, ensure door is balanced properly. Contact a trained garage door technician for service if needed.</li> </ul> |
|                     |   | Battery is dead.                             | Change the new battery.   |
| 5 Flashes           |   | Disengage Garage door opener.                | Engage Garage door opener.  |
|                     |  | No battery is detected.                      | <ul style="list-style-type: none"> <li>- Install backup battery.</li> <li>- Check the wire connection. if the Backup battery is already installed.</li> </ul>   |

# TROUBLESHOOTING

| SYMPTOM  | SOLUTION  |
|--|---|
| <b>Opener works from door control, but not remote control.</b>   | <ol style="list-style-type: none"> <li>1. Ensure Remote Lock on the Deluxe Wall Console is disabled.</li> <li>2. Reprogram the remote.</li> <li>3. Replace remote battery.</li> </ol>   |
| <b>Door reverses after it's completely closed.</b>               | <ol style="list-style-type: none"> <li>1. Check for any obstacles on the ground in the path of the door stopping the door from closing completely.</li> <li>2. Re-program the down travel limit to avoid door closing too far down. Refer to "Programming the travel limits" on Page 25 to set the travel limit.</li> </ol>   |
| <b>Door opener runs very slow.</b>                               | <p>Check operating condition of the door, ensure the door is balanced properly.<br/>Contact a trained garage door technician for service if needed.</p>   |
| <b>Door will not close and LED display shows "b".</b>            | <p>"b" indicates safety beam sensor is blocked while door is closing. Check the following:</p> <ol style="list-style-type: none"> <li>1. Ensure the safety beam sensors are installed and wired properly. Refer to "Aligning the safety beam sensors" on Page 21.</li> <li>2. Ensure both red and blue LED on the safety beam sensors are steadily on. Refer to "Aligning the safety beam sensors" on Page 21 to check the LED status and sensor alignment.</li> <li>3. If the problem persists and the door will not close, the opener can be forced to close by pressing and holding the door control button until the door is completely closed. CAUTION: Keep garage door in sight until the door is fully closed, then release the door button.</li> </ol> |
| <b>Door will not close and LED display shows "F"</b>             | <ol style="list-style-type: none"> <li>1. Check door for binding, lubricate rollers and/or hinges if needed. Refer to "Maintenance" on Page 33.</li> <li>2. Check operating condition of the door, ensure the door is balanced properly.<br/>Contact a trained garage door technician for service if needed.</li> </ol>   |
| <b>When opener is activated, motor moves but door does not.</b>  | <p>Ensure the motor is connected to the coupler Refer to "Manually Open / Close Garage Door" on Page 28 to connect the motor properly.</p>  |
| <b>Door will not close completely or reverse in winter time.</b> | <p>Check for any snow/ice accumulated at the bottom of the door or on the floor causing the door to not close completely. Remove snow/ice if necessary.</p>   |



## **IMPORTANT SAFETY INSTRUCTIONS**

**To reduce the risk of severe injury or death, read all instructions carefully.**

1. READ AND FOLLOW ALL INSTRUCTIONS.
2. Never let children operate or play with door controls. Keep the remote control away from children.
3. Always keep the moving door in sight and away from people and objects until it is completely closed.  
NO ONE SHOULD CROSS THE PATH OF THE MOVING DOOR.
4. NEVER GO UNDER A STOPPED, PARTIALLY OPENED DOOR.
5. Test door opener monthly. The garage door MUST reverse on contact with a 38-mm (1-1/2 inch) high object (or a 2x4 board laid flat) on the floor. After adjusting either the force or the limit of travel, retest the door opener. Failure to adjust the opener properly increases the risk of severe injury or death.
6. When possible, use the emergency release handle to disengage motor ONLY when garage door is CLOSED. Use caution when using this release with the door open. Weak or broken springs are capable of increasing the rate of door closure and increasing the risk of severe injury or death.
7. KEEP GARAGE DOORS PROPERLY BALANCED. See user's manual. An improperly balanced door increases the risk of severe injury or death. Have a qualified service person make repairs to cables, spring assemblies, and other hardware.
8. This operator system is equipped with an unattended operation feature. The door could move unexpectedly. NO ONE SHOULD CROSS THE PATH OF THE MOVING DOOR.

**SAVE THESE INSTRUCTIONS**



## **FCC & ISED**

### **FCC:**

Any Changes or modifications not expressly approved by the party responsible for compliance could void the user's authority to operate the equipment.

This equipment complies with FCC radiation exposure limits set forth for an uncontrolled environment. This equipment should be installed and operated with minimum distance 20cm between the radiator & your body.

### **ISED:**

This device contains licence-exempt transmitter(s)/receiver(s) that comply with Innovation, Science and Economic Development Canada's licence-exempt RSS(s). Operation is subject to the following two conditions:

- (1) This device may not cause interference.
- (2) This device must accept any interference, including interference that may cause undesired operation of the device.

The device meets the exemption from the routine evaluation limits in section 2.5 of RSS-102 and compliance with RSS-102 RF exposure, users can obtain Canadian information on RF exposure and compliance. This equipment should be installed and operated with a minimum distance of 20 centimeters between the radiator and your body.

# SKYLINK LIMITED WARRANTY

## WARRANTY ON SKYLINK GARAGE DOOR OPENER

LIMITED WARRANTY TO ORIGINAL CONSUMER PURCHASER WITH PROOF OF PURCHASE  
This SKYLINK brand product, as supplied and distributed by SKYLINK and delivered new, in the original carton to the original consumer purchaser (not transferable or assignable), is warranted by SKYLINK against manufacturing defects in materials or workmanship for the limited warranty period of:

| WARRANTY PERIOD       |          |
|-----------------------|----------|
| <b>Motor</b>          | Lifetime |
| <b>Parts</b>          | 5 Years  |
| <b>Accessories</b>    | 1 Year   |
| <b>Battery Backup</b> | 1 Year   |

This limited warranty is valid only on products purchased and used in the United States / Canada that have been installed, operated, and maintained according to the instructions attached to or furnished with the product. To receive warranty service, the purchaser must contact SKYLINK at the address or phone number provided below for problem determination and service procedures. Purchaser will be advised of disassembly and shipping instructions, then send the product or component, pre-paid and insured to SKYLINK. Purchasers must allow SKYLINK a reasonable opportunity to inspect the product claimed to be defective prior to removal or alteration of its condition. The original dated bill of sale must be presented upon request as proof of purchase to SKYLINK to receive warranty service. During the applicable warranty period, a product will be repaired, replaced, or the price refunded, at the sole option of SKYLINK. SKYLINK may use new or reconditioned parts in repairing a product or replace the product with a new or reconditioned product. Replacement parts and products are warranted for the remaining portion of the original product's warranty or ninety (90) days, whichever is longer. All replaced parts and products are the property of SKYLINK and you must return them to SKYLINK.

This limited warranty covers manufacturing defects in materials or workmanship encountered in normal residential household, non-commercial use of this product and shall not cover the following: damage that occurs in shipment, delivery, installation, and uses for which this product was not intended; damage caused by unauthorized modification or alteration of the product; product where the original factory serial numbers have been removed, defaced, changed in any way, or cannot be readily determined; cosmetic damage including scratches, dents, chips, and other damage to the product's finishes; damage caused by abuse, misuse, pest infestations, accident, fire, floods, or other acts of nature or God; damage caused by use of equipment, utilities, services, parts, supplies, accessories, applications, installations, repairs, external wiring or connectors not supplied or authorized by SKYLINK; damage caused by incorrect electrical line current, voltage, fluctuations and surges; damage caused by failure to operate and maintain the product according to instructions; in-home instruction on how to use your product; and service to correct installation not in accordance with electrical codes or correction of household electrical (i.e., house wiring, fuses); and does not cover batteries, missing or damaged parts from clearance or open box sales. The cost of repair or replacement under these excluded circumstances shall be the customer's responsibility.

### EXCLUSION OF IMPLIED WARRANTIES

IMPLIED WARRANTIES, INCLUDING THE IMPLIED WARRANTIES OF MERCHANTABILITY OR FITNESS FOR A PARTICULAR PURPOSE, ARE LIMITED TO ONE YEAR OR THE SHORTEST PERIOD ALLOWED BY LAW.

Some states and provinces do not allow limitations on how long an implied warranty lasts, so the above limitations or exclusions may not apply to you. This limited warranty gives you specific rights, and you may also have other rights, which vary from state to state and province to province.

LIMITATION OF REMEDIES YOUR SOLE AND EXCLUSIVE REMEDY IS PRODUCT REPAIR, PRODUCT REPLACEMENT, OR REFUND OF THE PURCHASE PRICE AT SKYLINK'S OPTION, AS PROVIDED IN THIS LIMITED WARRANTY. SKYLINK SHALL NOT BE LIABLE FOR SPECIAL, INCIDENTAL, OR CONSEQUENTIAL DAMAGES, INCLUDING BUT NOT LIMITED TO TIME AWAY FROM WORK, HOTELS AND/OR RESTAURANT MEALS, REMODELING EXPENSES, LOSS OF REVENUE OR PROFITS, FAILURE TO REALIZE SAVINGS OR OTHER BENEFITS REGARDLESS OF THE LEGAL THEORY ON WHICH THE CLAIM IS BASED, AND EVEN IF SKYLINK HAS BEEN ADVISED OF THE POSSIBILITY OF SUCH DAMAGES.

Some states and provinces do not allow exclusion or limitation of incidental or consequential damages, so the above limitations or exclusions may not apply to you. This warranty gives you specific rights, and you may also have other rights, which vary from state to state and province to province. SKYLINK does not warrant the uninterrupted or error-free operation of the product. No warranty or guarantee given by any other person, firm, or corporation with respect to this product shall be binding on SKYLINK. To obtain warranty service, please contact SKYLINK at:

1-800-304 1187

support@skylinkhome.com

