

Casmir - Single Handle Pressure Balanced Tub & Shower Set



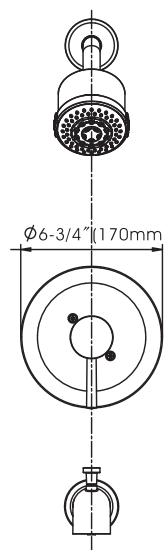
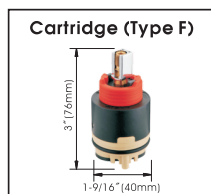
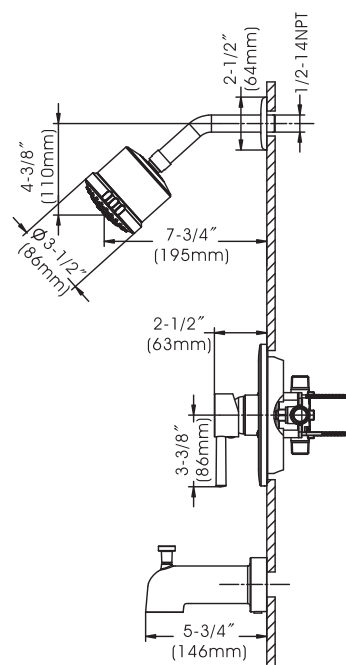
- * Pressure Balanced Valve with Integral Stops & Ceramic Disc Cartridge (Type F)
- * Solid Brass Waterway Construction with 1/2" - 14NPT Connection
- * 5-3/4" Zinc Die Cast Diverter Tub Spout
- * 3-1/2" Six Function Plastic Shower Head with Stainless Steel Shower Arm and Escutcheon
- * Shower Head Flow Rate: 1.5GPM @ 80PSI
- * Tub Spout Flow Rate: 6.5GPM @ 80PSI
- * 100% Pressure System Tested
- * Contractor Pack Available
- * Lifetime Limited Warranty; 5 year warranty from date of purchase for Commercial users

Project / Job Name	
Architect / Engineer	
Contractor	
Model	
Quantity	

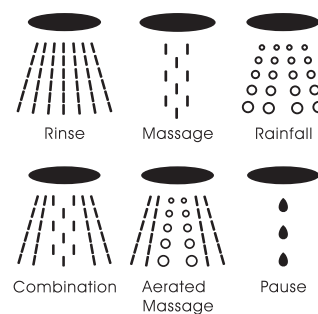
Model No. :

☐ 192-6486 (CH)
(Shown Model)

☐ 192-6487 (BN *Spotless PVD*)



Shower Head Functions :



Product Compliance:

- ASME A112.18.1 / CSA B125.1
- ANSI A117.1 (ADA)
- ASSE 1016

Casmir - Single Handle Pressure Balanced Tub & Shower Set



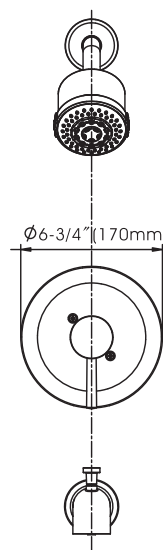
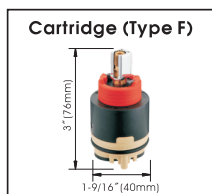
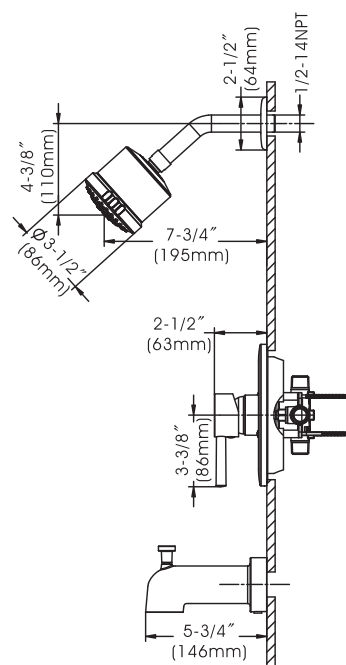
- * Pressure Balanced Valve with Integral Stops & Ceramic Disc Cartridge (Type F)
- * Solid Brass Waterway Construction with 1/2" - 14NPT Connection
- * 5-3/4" Zinc Die Cast Diverter Tub Spout
- * 3-1/2" Six Function Plastic Shower Head with Stainless Steel Shower Arm and Escutcheon
- * Shower Head Flow Rate: 1.5GPM @ 80PSI
- * Tub Spout Flow Rate: 6.5GPM @ 80PSI
- * 100% Pressure System Tested
- * Contractor Pack Available
- * Lifetime Limited Warranty; 5 year warranty from date of purchase for Commercial users

Project / Job Name	
Architect / Engineer	
Contractor	
Model	
Quantity	

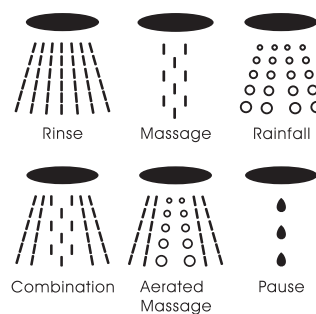
Model No. :

☐ 192-6486 (CH)

☐ 192-6487 (BN **Spotless PVD**)
(Shown Model)



Shower Head Functions :



Product Compliance:

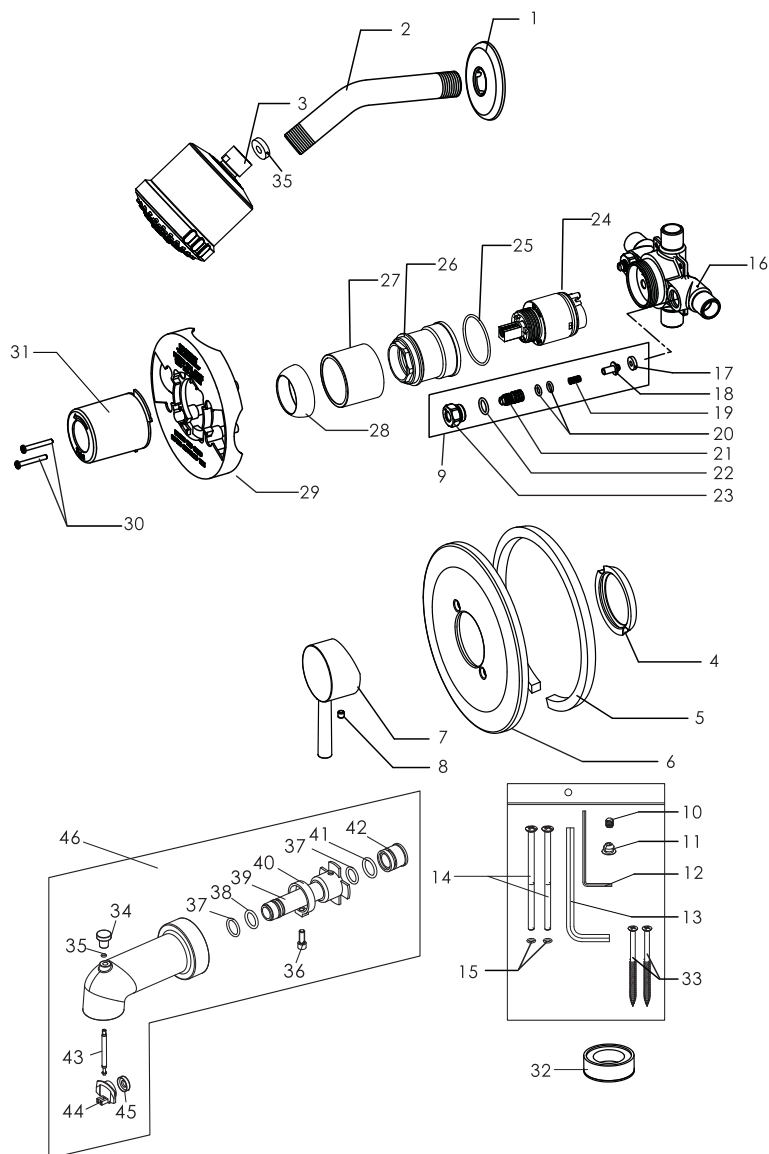
- ASME A112.18.1 / CSA B125.1
- ANSI A117.1 (ADA)
- ASSE 1016

Casmir - Single Handle Pressure Balanced Tub & Shower Set

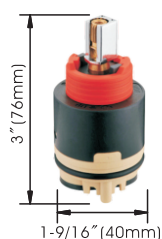
Model No. :

192-6486 (Polished Chrome)

192-6487 (Brushed Nickel **Spotless PVD**)



Cartridge (Type F)



No.	Part Name	Material
1	Shower Arm Flange	Stainless Steel
2	Shower Arm	Stainless Steel
3	Shower Head	Plastic
4	Sealing Ring	Sponge
5	Escutcheon Gasket	Rubber
6	Escutcheon	Stainless Steel
7	Handle	Zinc
8	Index	Stainless Steel
9	Stop Valve	Rubber+Brass+Stainless Steel
10	Set Screw	Stainless Steel
11	Index	Plastic
12	Small Allen Wrench	Steel
13	Large Allen Wrench	Steel
14	Escutcheon Screw	Stainless Steel
15	O-Ring	Rubber
16	Valve Body	Brass
17	Sealing Washer	Rubber
18	Stopper	Brass
19	Spring	Stainless Steel
20	O-ring	Rubber
21	Adjuster	Brass
22	O-ring	Rubber
23	Adjuster Seat	Brass
24	Cartridge	Ceramic
25	O-ring	Rubber
26	Cartridge Lock Nut	Zinc
27	Cartridge Sleeve	Brass
28	Trim Cap	Brass
29	Plaster Guard	Plastic
30	Screw	Stainless Steel
31	Protective Sleeve	Plastic
32	Teflon Tape	Stainless Steel
33	Screws	Plastic
34	Knob	Zinc
35	O-ring	Rubber
36	Screw	Stainless Steel
37	O-ring	Rubber
38	O-ring	Rubber
39	Plastic Core	Plastic
40	Ring	Zinc
41	O-ring	Rubber
42	Core Cover	Plastic
43	Pulling Core	Brass
44	Sealing Plate	Plastic
45	Washer	Rubber

Technical Support: warranty@cmipproduct.com
Hour of Operation: Mon - Fri 8:30 a.m - 5:00 p.m. EST