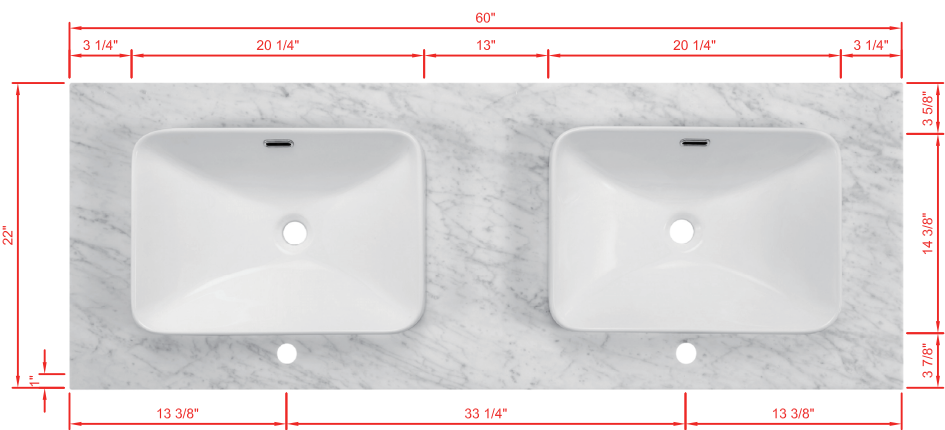
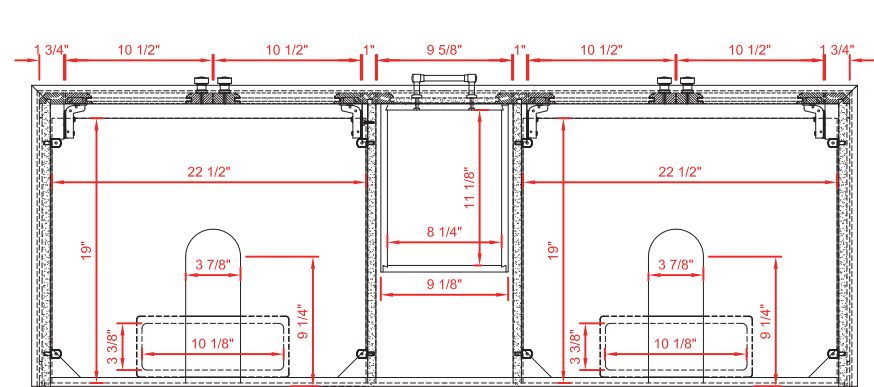


INSTALLERS DIAGRAM

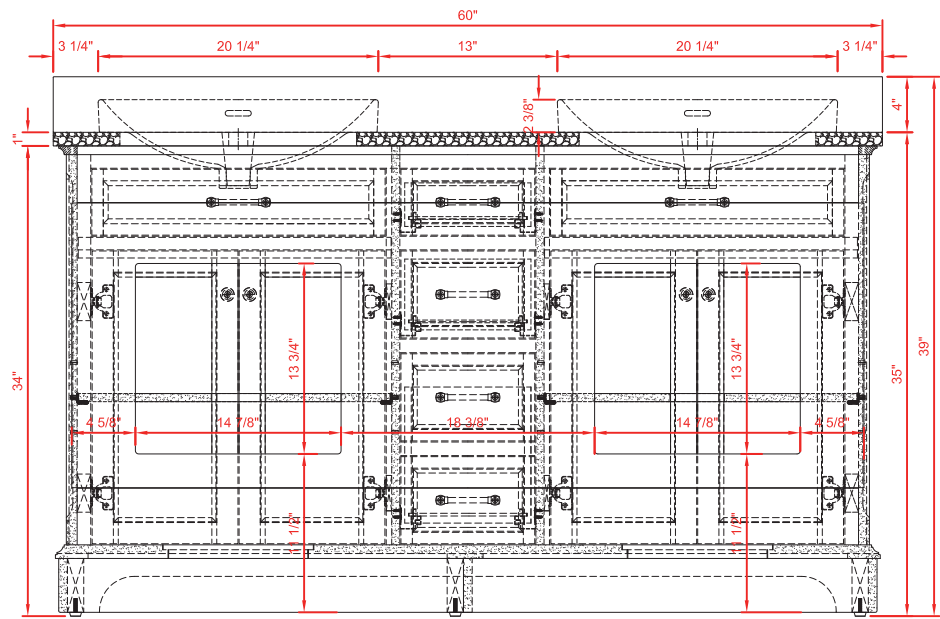
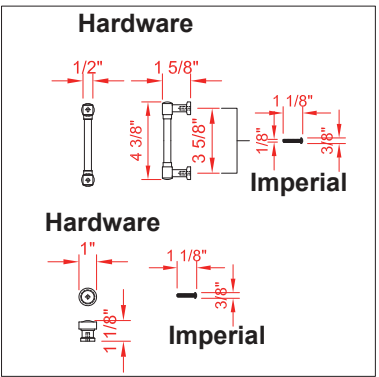
MODEL NUMBER:2026VB-60-242-SR

SEMI-RECESSED SINK

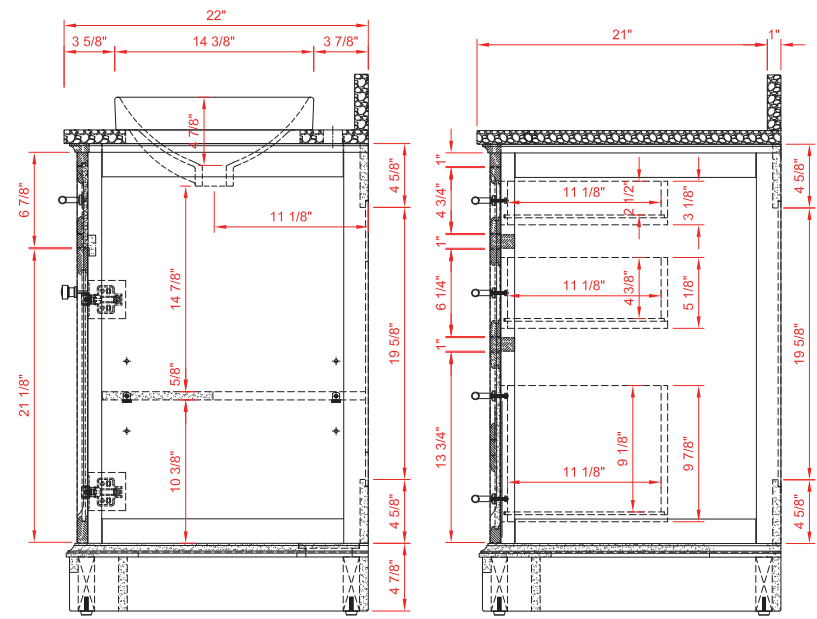


TOP VIEW

Product Net weight (W/O Top):283lbs.
Product packed Gross weight (W/O Top):376lbs.
Packed product Dimensions:
63.25in. W x 25.25in. D x 44.75in. H



FRONT VIEW



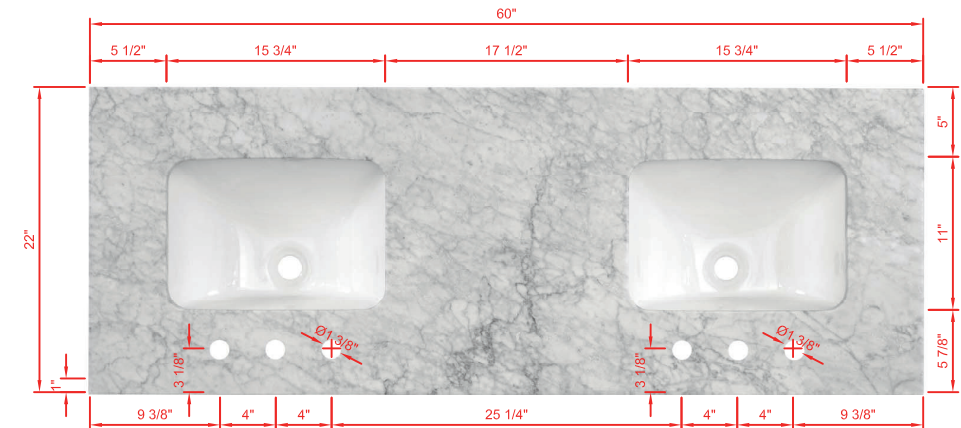
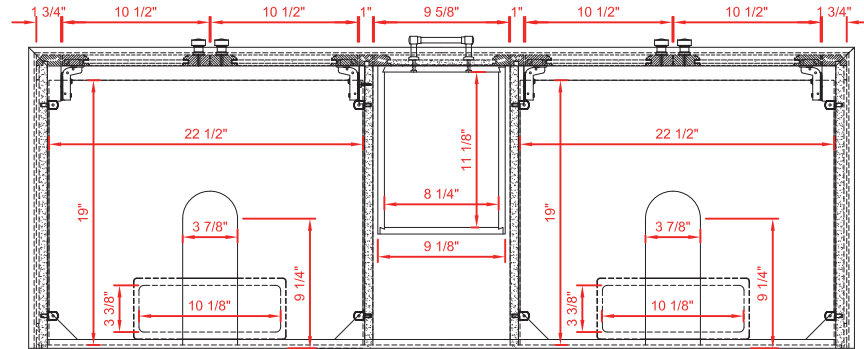
SIDE VIEW



INSTALLERS DIAGRAM

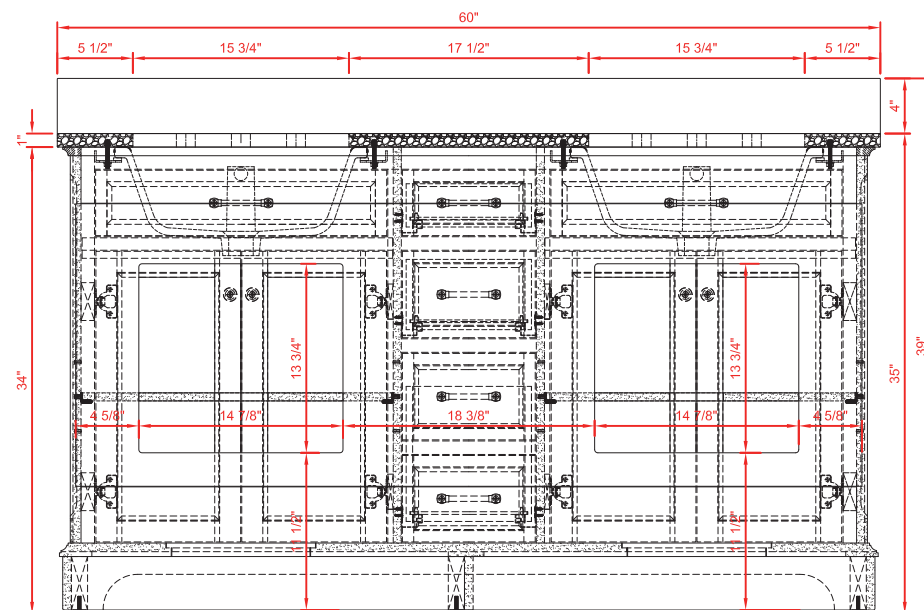
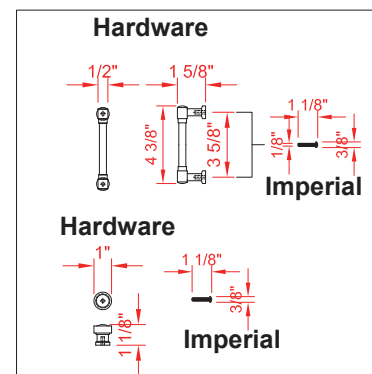
MODEL NUMBER:2026VB-60-242-UM

UNDERMOUNT SINK

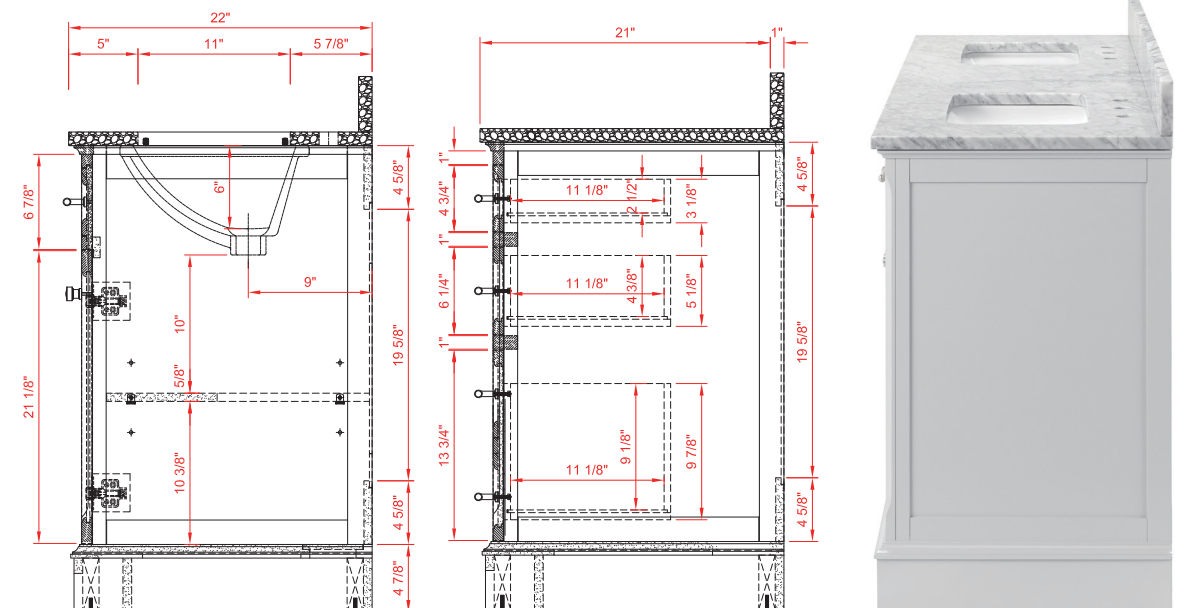


TOP VIEW

Product Net weight (W/O Top):283lbs.
Product packed Gross weight (W/O Top):376lbs.
Packed product Dimensions:
63.25in. W x 25.25in. D x 44.75in. H



FRONT VIEW



SIDE VIEW