



# MODENA

## K-131

### KITCHEN FAUCET

#### BEFORE YOU BEGIN YOUR INSTALLATION



Shut off  
water supply



Flush hot and cold  
water supply lines



Required tools



Installation by License  
Professional Plumber



Flush the water pipe  
before installation



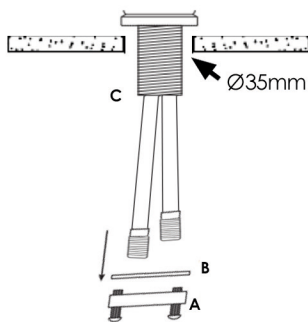
Drawings are for  
reference only



Do not disassemble  
the body

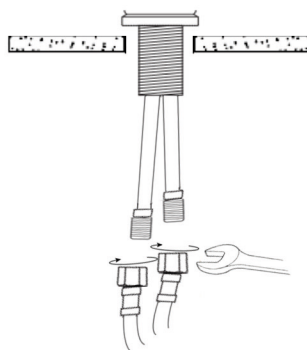
#### FAUCET INSTALLATION

1



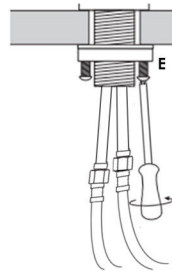
Ensure there is a Ø35mm through-hole on the kitchen counter. Remove the mounting nut (A) and washer (B) from the threaded shroud (C).

2



Connect the braided supply hoses to the faucet, tighten gently with a wrench.

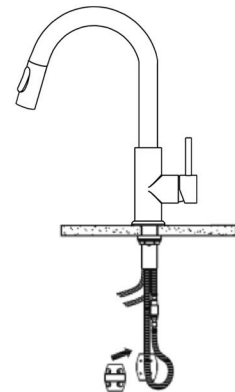
3



Position faucet on the installation surface. Fit flexible hoses through hole on countertop or sink.

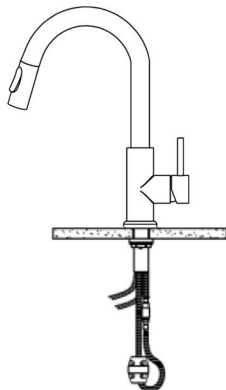
Slide washer and thread the mounting nut onto threaded shroud. Turn faucet to desired handle position. Securely tighten clamp screws (E)

4



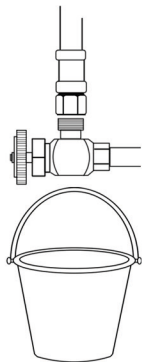
Connect pullout hose to quick connect and insert weight (loose-install)

5



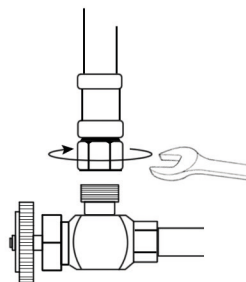
Secure weight on lowest vertical point on pull-out hose side. (not on quick connect side)

6



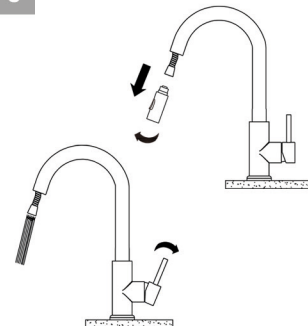
Before connecting supply hose, flush supply valves to clear any debris. Place a bucket underneath valves and run water for 5 to 10 seconds. Turn water off.

7



Connect hot and cold water lines to the inlet pipe and tighten with a wrench until snug. Do not over tight.

8



Unscrew spray head by hand. Hold the tip of the spray hose down and turn on the faucet and let the water run 60 seconds to flush any debris, the re-connect spray head. Ensure gasket is present.

#### CARE AND CLEANING

Clean the faucet frequently using mild soap or an on-abrasive cleaner and then quickly rinse with water and dry with soft cloth only.

Using abrasive cleaners, solvents, acid cleaners or any scrubbing detergent, polisher or scraper will damage the finish and void the warranty.

#### WARRANTY

For additional technical assistance or for any questions or concerns about your faucet's warranty, please contact us.

[www.stylishkb.com/warranty](http://www.stylishkb.com/warranty)



[www.stylishkb.com](http://www.stylishkb.com)



[care@stylishkb.com](mailto:care@stylishkb.com)



+1-855-789-5352

Stylish International Inc Follow us on Instagram! Check out and let us know your comments [stylish.international.inc](https://www.instagram.com/stylish.international.inc)

Products and specifications shown are subject to change without notice. Please contact our technical support at [care@stylishkb.com](mailto:care@stylishkb.com) for any further queries, replacement parts requests, etc. ©2019 Stylish® all right reserved.



# SOAP DISPENSER

## S-01

### BEFORE YOU BEGIN YOUR INSTALLATION



Required tool



Installation by License  
Professional Plumber



Drawings are for  
reference only

### WARRANTY

For additional technical assistance or for any questions or concerns about your soap dispenser's warranty, please contact us.

[www.stylishkb.com](http://www.stylishkb.com)

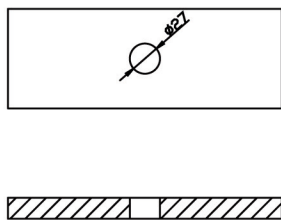
[care@stylishkb.com](mailto:care@stylishkb.com)

[www.stylishkb.com/warranty](http://www.stylishkb.com/warranty)

+1-855-789-5352

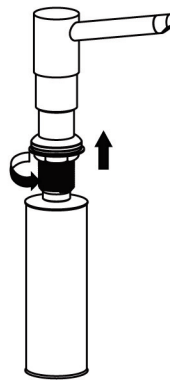
### INSTALLATION STEPS

1



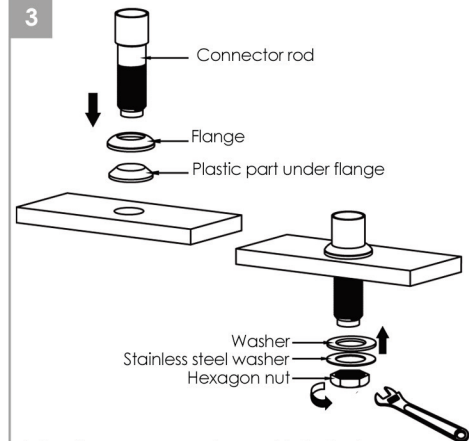
Recommend hole size 25mm to 29mm  
hole diameter.

2



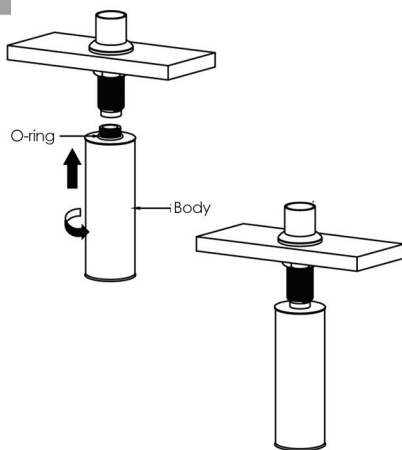
Detach body tank from faucet and  
also remove hexagon nut.

3



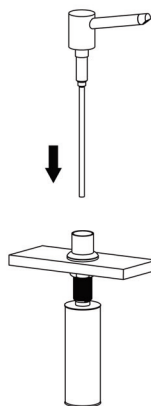
Introduce connector rod into hole, ensure  
flange and plastic rubber are above  
the countertop. Secure connector rod  
with hexagon nut, firmly with a wrench.

4



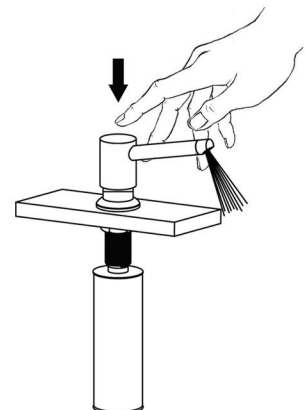
Hand secure body tank to connector rod.

5



Now dispenser can be filled with soap from  
the top, then straw can be inserted into  
soap dispenser.

6



To dispense soap, push down on spout.  
Use hand palm to push down and get  
soap pumped.

### CARE AND CLEANING

Many times the pump itself or the end of the nozzle can get clogged with hard soap particles, dirt, or other buildup. Following some very simple steps, you can get your dispenser working properly.

- Check the tube that is connected to the pump lever (the part you push down on for the soap to be dispensed) to be sure that the tubing is cleared of any debris. Look to see if there are any hard particles or buildup within the tube.
- Turn the tube upside down so that the pump part is upside down and the opening of the tube is toward the ceiling. Run the tube under hot water for 2 to 3 minutes, allowing any buildup inside the tube to be flushed out. Also run the pump dispenser (where the soap comes out) under the hot water as well.
- Place the small pipe cleaner inside the tube and run it in both a circular motion and up down several times within the tube to help clean it out. Also take the pipe cleaner into the pump dispenser hole to be sure it is clear of any debris.
- With a sharp object such as a safety pin, gently clean out the tip of the nozzle of all hardened soap.

Using abrasive cleaners, solvents, acid cleaners or any scrubbing detergent, polisher or scraper will damage the finish and void the warranty.

Stylish International Inc

Follow us on Instagram! Check out and let us know your comments [stylish.international.inc](https://www.instagram.com/stylish.international.inc)

Products and specifications shown are subject to change without notice. Please contact our technical support at [care@stylishkb.com](mailto:care@stylishkb.com) for any further queries, replacement parts requests, etc. ©2019 Stylish® all right reserved.