

**PANTONE P104-7 C**  
**PANTONE 361 C**  
**PANTONE 7546 C**

## Contents

Customer Service and Warranty	1
Basic parameter	2
Product Introduction	2
Button function description	3
Adapter location	4
Operation process	4
Button function description	4
Filter replacement	7
Essential oil adding procedure	8
Maintenance instructions	10
Troubleshooting	11

## Customer Service and Warranty

Thank you for choosing the TDBYWAE Air Purifier. We are committed to providing you with the best product quality and service. We hope this product brings you and your family convenience and health.

TDBYWAE offers a 1-year warranty +30 days return/exchange policy +lifetime support for this product.

If you don't like it,  
 If you have a user manual problem,  
 If you have missing accessories,  
 If your package got damaged,  
 If the product can't be used,  
 If you have any questions or feedback,  
 If you want to extend the warranty for 1 more year,  
 Please contact our brand support team at

support@tdbywae.com  
 tdbywae.com  
 1-888-982-2291

We will provide the best service for our brand's customers.

In order to help you solve the problem efficiently, please send us the following information when you contact us.

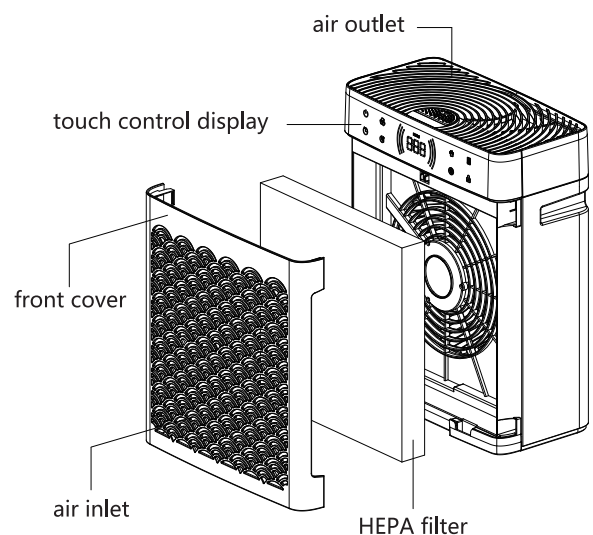
\*Amazon order number  
 \*A brief description of the problem: problem + the efforts you tried +photos/videos

1 support@tdbywae.com tdbywae.com 1-888-982-2291

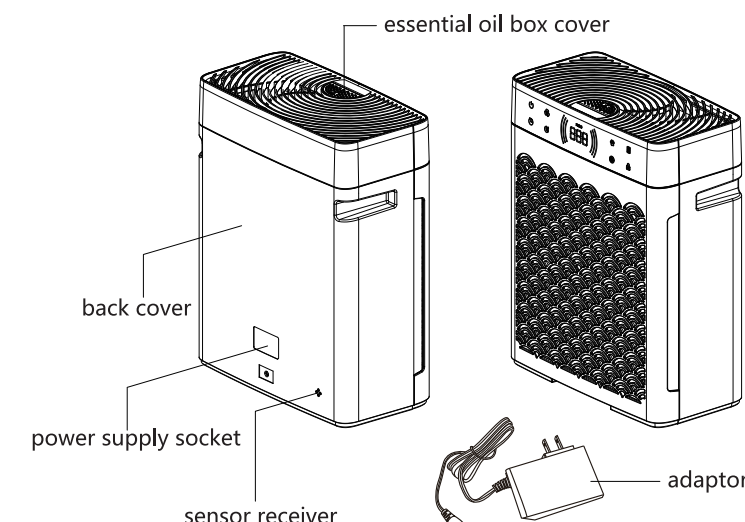
## Basic parameter

Type desc	Air purifier	Lifetime	1.5 Years
Model	MB-066	Product weight	3 kg
Size	306×157×389mm	Noise	63dB(A)
Input	24V 1.5A	Rated wattage	34 W

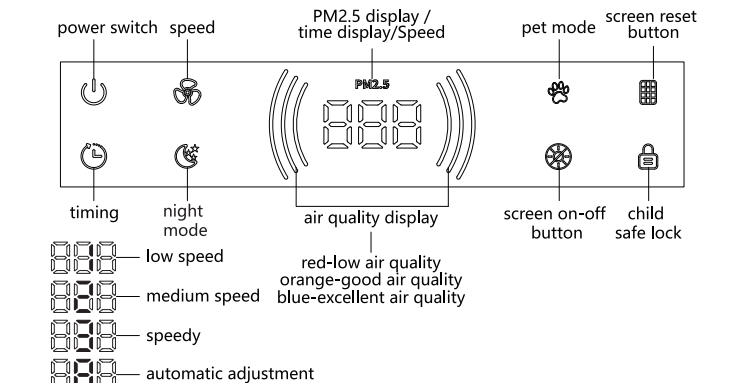
## Product Introduction



2 support@tdbywae.com tdbywae.com 1-888-982-2291

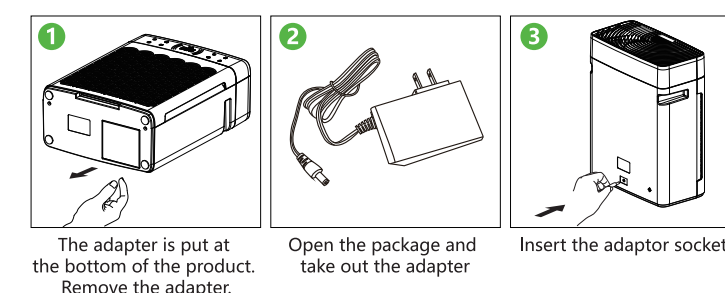


## Button function description



3 support@tdbywae.com tdbywae.com 1-888-982-2291

## Adapter location



## Operation process

Plug in the power, the buzzer sounds a chord, the power switch button is red, and the product is in standby state.

**Power on:** Press the switch button, the button turns from red to green, the product starts to work, and the speed works in the automatic mode.

**Power off:** Press the switch button, the buzzer makes a chord prompt tone, the switch button on the control panel changes from green to red, the product stops working and is in standby state.

## Button function description

### Power switch

In the standby state, the button is red, press this button, the product starts to work, the button changes from red to green, the speed is of default automatic. Press the switch button again, it turns from green to red, and the product stops working.

4 support@tdbywae.com tdbywae.com 1-888-982-2291

### Speed button

In the startup state, the speed button is green, and it's in default automatic speed, after press the speed button, the speed increases from current gear upwards, when reach speedy wind then go to low speed. At the press process, the middle of the nixie tube indicates the speed change from 1 gear to 3 gear.

### Timing button

In the startup state,press the timing button, it turns green. Timing from 1H -16H,press once to select 1H change.

### Child lock button

In the startup state,press the child lock button for 3 seconds,the button shows green, it entered into Child lock situation. Other buttons cannot work. After long press the child lock button for 3 seconds, the child lock light green light off,other button can work.

### Night mode key

In the startup state,press the night mode key, turns green, other button all is off. The wind reduced to the lowest one. Press the night mode key again, exit the night mode, the wind come back to normal speed.

### Screen on-off button

In the startup state, press screen on-off button, it turns green, other button is off, the wind not change.

### Pet mode button

In the startup state,press pet mode button, it turn green, the wind goes into the speedy state.

### Filter reset button

This button turns green,refers the lifetime of the HEPA filter expired, need to replace the filter. After HEPA filter is changed,Long press this button for 10 seconds, when you hear "di,di",the green light turn off, which means the reset is finished. If you replace the filter in advance, after replacement, please also long press this button for 10 seconds, and hear "di", this button light for 3 seconds, it means the rest is done.

5 support@tdbywae.com tdbywae.com 1-888-982-2291

## Notice

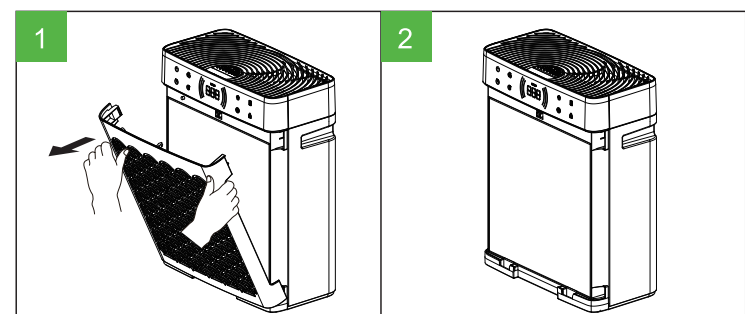
- When the product is long-term no use, please put it back in the packaging box, and then store it in a safe and cool place, away from direct sunlight.
- In addition to this product special filter, do not put any accessories that do not belong to the machine into the body, if you encounter any trouble, please contact the company, do not repair yourself, this will affect your warranty rights and even lead to permanent failure of the product.
- This product is not a replacement for ventilator, vacuum cleaner or kitchen range hood.
- When using with household gas appliances (such as gas stoves, gas water heaters, etc.), ventilate to avoid carbon monoxide poisoning.
- Do not pour liquid or powder or fine matter into the product from the outlet grille.
- Do not place hair, fabric, etc. close to the product to avoid entangling or blocking the air inlet hole and the air outlet grille.
- Do not sit or tilt the product.
- Often clean the dust, hair, impurities on the surface of the filter, which is conducive to reducing the growth of bacteria.

**This product is not intended for use by persons (including children) with reduced physical, sensory or intellectual abilities or lack of experience and knowledge, unless they are under supervision or guidance from a capable person responsible for their safety. Please ensure that children do not use this product as a toy.**

6 support@tdbywae.com tdbywae.com 1-888-982-2291

## Filter replacement

- Please shut off the power supply and unplug product before replace the filter.
- According to figure 1,hand pulls back the front cover at the arrow position.According to figure 3,remove the HEPA filter to be replaced. In order to ensure ventilation and purification, use a vacuum cleaner to clean the dust inside, or gently wipe the inside of the product with a soft cloth.
- According to Figure 4, disassemble the plastic bag of the new filter and install it into the product.Please leave the white ribbon outside for the right sequence of filter install, also easy access and cleaning.
- According to figure 5, insert the two pins under the front cover into the corresponding groove of the fuselage, and then press the upper position of the front cover with your hand, and hear a "click", indicating the front cover is fixed.Insert the plug of the power cord, replace the filter, and press the reset button of the filter for 10S. When hear "di di", and the green icon disappears, indicating that the reset is completed.



7 support@tdbywae.com tdbywae.com 1-888-982-2291

## Essential oil adding procedure

- Open the lid of the oil box (as shown in Figure 1), and then turn the lid of the oil box to the position shown in Figure 2.
- 5-10 drops of absorbent cotton in the essential oil box (can be increased or decreased according to the user's wishes).
- Press the lid again to reset.

**Notice:**When adding essential oil, please turn off the power!

8 support@tdbywae.com tdbywae.com 1-888-982-2291

## Usage restriction

- Users are forbidden to dismantle the machine for maintenance, if necessary, please contact the manufacturer for maintenance and replacement.
- Do not use gasoline, alcohol or other flammable cleaning agents to clean the product so as not to cause fire.
- Do not use in the environment where flammable and explosive materials are stored. Do not approach hot or high-temperature objects during use to avoid explosion.
- Do not put any part of the body or other items into the outlet of the machine to avoid personal injury or damage to the machine.
- Do not use wet hands to switch the power supply or move the product. Keep your hands dry to avoid electric shock.
- It is forbidden to block the air inlet and air outlet so as to avoid damage caused by overheating of the machine.
- Do not approach soft objects, such as curtains, and ensure that there is a space distance of 30cm near the machine.
- It is prohibited to disassemble or modify the product without permission.
- Do not use outdoors or on wet ground to reduce the risk of electric shock.

9 support@tdbywae.com tdbywae.com 1-888-982-2291

## Warning

- The product must be disconnected from the power supply before cleaning or other maintenance to avoid unnecessary dangers.
- When the product is suspended for use, maintenance or personnel leave, please disconnect the power supply in time.
- If you need to open the product to replace the filter, please make sure that the machine is turned off, and the power supply is disconnected.
- When the product has an odor or abnormal sound, please disconnect the power supply immediately and contact the after-sales.
- When disconnecting the power supply, do not drag the power cable. Hold the power plug and pull it out.
- If the power cord is damaged, please be sure to be replaced by a professional, or send to the designated maintenance place for maintenance.
- Do not use non-original parts or parts. If the use of non-original parts or parts causes damage to the product, the product will no longer enjoy the after-sales policy.

## Maintenance instructions

- Don't splash water on the machine.
- Don't put sundries into the air outlet.
- Don't use on the ground with water or under the wet environment.
- Power off during maintenance or cleaning.
- External: the body can be cleaned with a soft cloth with a small amount of water. Solvents or detergents should not be used to wipe the body, or the surface coatings may be damaged.
- Inside: clean it with a soft cloth with a small amount of water.
- Please strictly follow the above requirements for maintenance.
- Read the maintenance instructions before opening the appliance.
- Appliances that are obviously damaged must not be operated.

10 support@tdbywae.com tdbywae.com 1-888-982-2291

## Troubleshooting

Problems	Possible Reasons and Solutions
Fail to start.	1.Check if the charging cable plug is electrified. 2.Check that the charging cable plug is not disconnected.
Low air output	1.Check if there are any obstructions in the outlet/grille or air intake. If so, please turn off the air purifier and remove the obstructions. 2.Check if the filter has been used for a long time and become dirty. If so, please try to replace a new filter.
Can't feel the effect	1.Please check that the filter element is installed correctly. 2.The filter is too dirty and has not been replaced for a long time. Please replace the filter.
The air purifier produces a strange smell.	1.The filter is too dirty and has not been replaced for a long time. Please replace the filter. 2.Water has entered the filter or the purifier has been used in a humid environment. Please replace the filter. 3.Reuse the purifier that has been stopped use or sealed for a long time.Please clean the filter first. If this cannot be solved, please replace the filter. 4.Keep the product away from high-temperature heating appliances. 5.If there is a burning smell. Stop using immediately, unplug the power supply, and contact the customer support team for help.

**Note:** If the fault cannot be eliminated after the above inspections, please contact the dealer or the designated after-sales service. Do not disassemble and repair by yourself to avoid danger and damage to the machine.

### Replace the filter or other related parts

- When maintain or turn on the machine, please make sure the filter is installed correctly.
- Only those who have received instruction training can replace the other relevant parts. Please contact dealer or the designated after-sales service.

If you encountered any question or problem, please contact with our after-sale service at:  
 support@tdbywae.com  
 tdbywae.com  
 1-888-982-2291

**We are in 24 hours stand by to offer the best customer service for you.**

11 support@tdbywae.com tdbywae.com 1-888-982-2291

**TDBYWAE**

Learn more about TDBYWAE, please visit us at [tdbywae.com](http://tdbywae.com)

[tdbywae.com](http://tdbywae.com)

Support Online Instant Chat

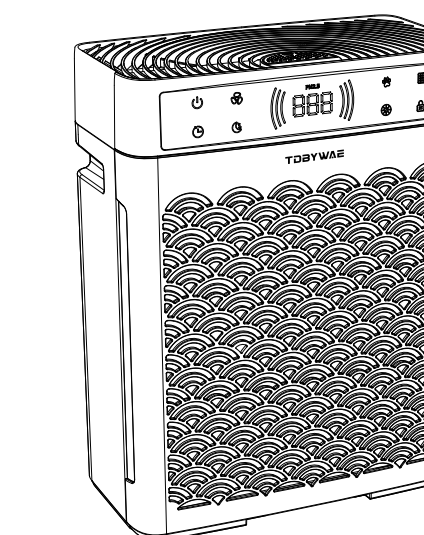
MADE IN CHINA

support@tdbywae.com tdbywae.com 1-888-982-2291

**TDBYWAE**

**Air Purifier**

**MB-066**



**USER MANUAL**

support@tdbywae.com tdbywae.com 1-888-982-2291