

Assembly Instruction Sheet #IS-8001P32C

For Style 8001P32C

Tools Required: Flathead screwdriver, Phillips screwdriver, pliers, wire cutters, wire strippers, electrical tape, safety glasses.

Light Source: (19) Candelabra Base Bulbs 60W Maximum.

Estimated Assembly Time: 20-30 minutes

Preparation: Identify and inspect all parts before beginning installation. Check package content list and diagrams below to be sure all parts are present. If any parts are missing or damaged, do not attempt to assemble, install, or operate the fixture. Contact customer service for replacement parts.

⚠ Warnings and Cautions

Turn off electricity at circuit breaker or main fuse box before installation. Consult a licensed electrician if in doubt.

These instructions are provided for your safety. It is very important you read them completely before installing the fixture.

We strongly recommend that a licensed, professional electrician perform the installation.

Disconnect fixture from power source before replacing bulbs. Make sure bulbs are given sufficient time to cool before removal.

STEP 1 - Install top and bottom tier together.

A. Pass supply wire and ground wire through the junction box and fixture loop. Use supplied wire nuts to make all wire connections (Refer to WIRE CONNECTIONS IN JUNCTION BOX). Twist connectors until wires are tightly joined together. Wrap each connection with approved electrical tape.

B. Place the junction box onto the hex coupling and secure with the fixture loop. Hand tighten until snug.

C. Carefully stuff all the connected wires into junction box. Place the plate onto the bottom of the junction box and secure by threading the coupling onto the hex coupling. Hand tighten until snug.

D. Thread the center rod onto the coupling and thread the bottom tier onto the center rod. Hand tighten until snug to secure them together.

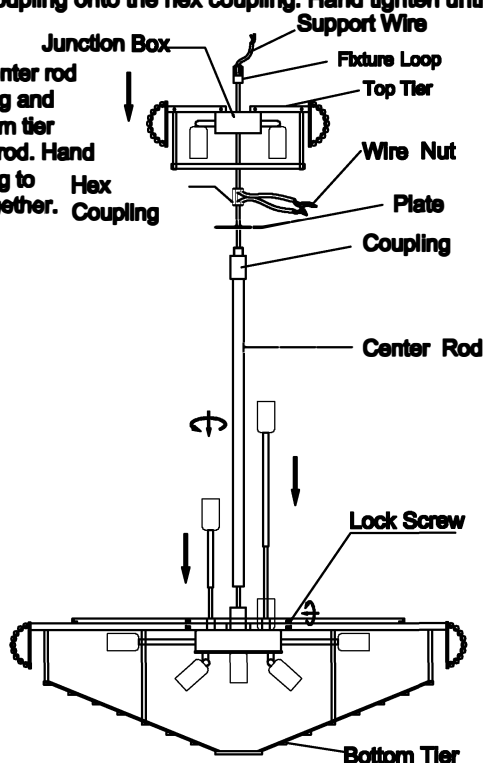
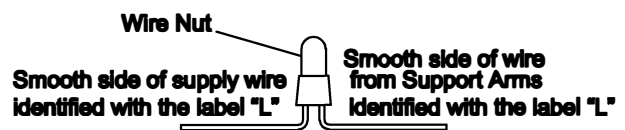


Figure 1

WIRE CONNECTIONS IN JUNCTION BOX

(Step 1 Continued)



WIRE CONNECTIONS IN JUNCTION BOX

STEP 2 - Install the Crossbar to the Ceiling

A. Attach the round crossbar to the outlet box and secure the outlet box screws by hand tighten. Place the crossbar with hook to the ceiling and make (4) marks from the holes of the crossbar on the ceiling for anchors. Remove the crossbar and drill proper holes from the (4) marks for anchors. Insert anchors into drilled holes properly. Place crossbar, flat washers and spring washers onto the anchors and secure with hex nuts. Hand tighten until snug with plier.

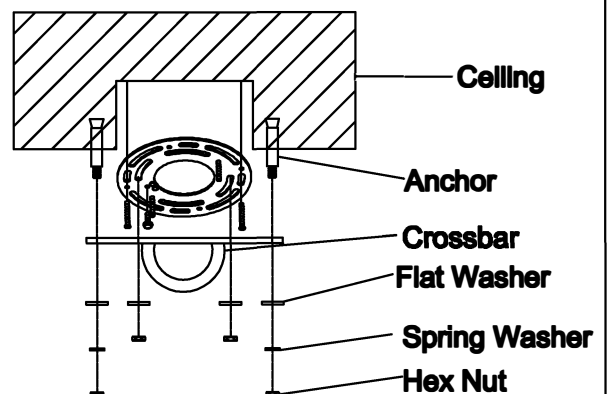


Figure 2

STEP 3 - Install Chain System and Fixture Body together

A. Remove the bolt from the quick connector. Place the quick connector onto the chain link of the bottom end of chain system. Place the fixture loop inside the quick connector. Thread the bolt back to the quick connector and the fixture loop. Hand tighten until snug to connect the chain system to the fixture.

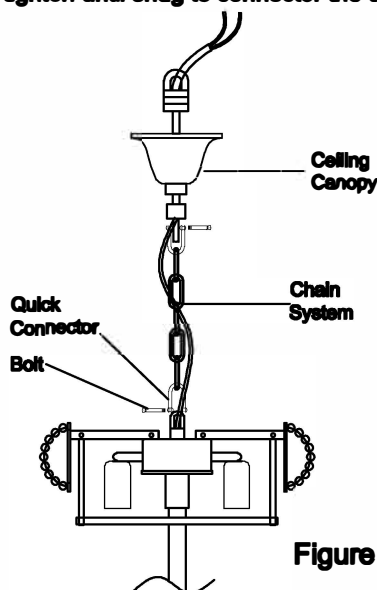


Figure 3

STEP 4 - Install Fixture to Crossbar

A. Feed the supply wires and ground wire through the canopy chain loop and nipple into the outlet box. Cut the wire leaving approximately 8" of the wire extending from the outlet box. Then go to picture C for wire connections and follow up the directions. Return to Step 5 when complete the wire connection.

B. Raise the ceiling canopy and canopy lock ring up the fixture chain and over the canopy chain loop. Tighten the canopy lock ring onto the canopy chain loop until tight.

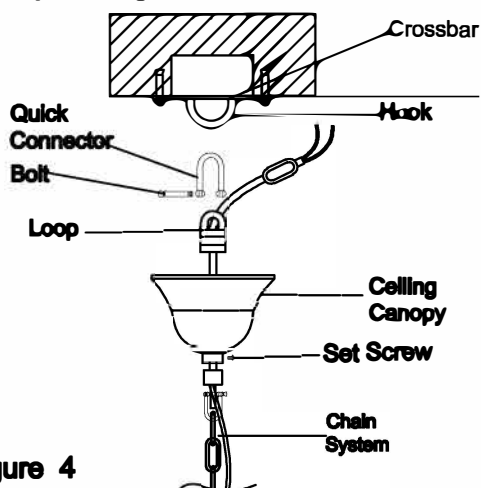


Figure 4

STEP 5 - Making the Wire Connections

A. Use standard wire connectors (not included) to make all wire connections. Twist connectors until wires are tightly joined together. Wrap each connection with approved electrical tape and carefully stuff all the connected wires into outlet box.

Note: If the electrical wire is going to be cut shorter than provided you will need to identify the "L" line wire and the "N" neutral wire before you cut the excess wire off. One is labeled N and the other labeled L. To do this separate the "L" line wire and the "N" neutral wire as far as you need to. Re-label the wire near where you want to make the cut. Be sure to mark the wire on the side of the fixture and not on the excess wire being cut and removed.

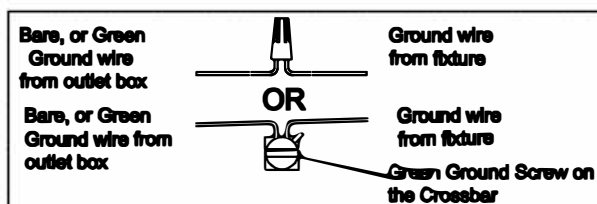
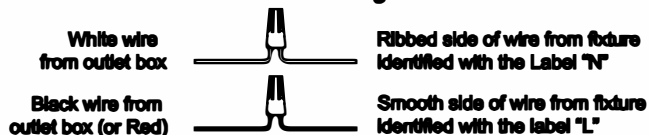


Figure 5

STEP 6 - Install Crystal Strings, Crystals and Bulbs.

A. Attach Crystal Strings A onto the top tier.

B. Attach Crystal Strings B onto the bottom of the top tier and the top edge of the bottom tier.

C. (Refer to CRYSTAL DISTRIBUTION) Attach Crystals A and B to the bottom tier.

D. Install bulbs onto sockets and push snugly into place.

Crystal String A

14mm*3PCS
174PCS

Crystal String B

14mm*28PCS
42PCS

Crystal A

40mm
216PCS

Crystal B

14mm*1PCS
40mm*1PCS
1PCS

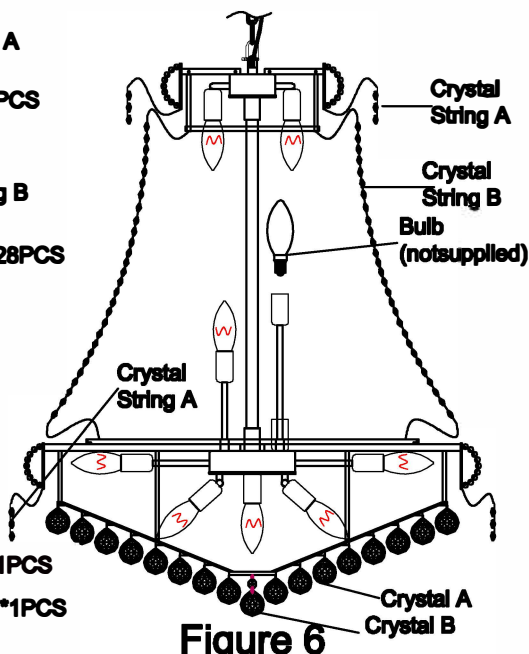


Figure 6