

# SPAC-SERIES

Assembled Sump Pump Package

# Liberty Pumps®

A Family and Employee Owned Company

## Available in 18" x 22" and 18" x 30" pit sizes

Assembled sump pump system. Molded pump platform helps to secure pump and reduce potential jamming from debris.

### Features

- 1/3 or 1/2 hp sump pump
- Durable structural foam sump pit and polyethylene cover with gasket and hardware
- Pre-assembled with 1-1/2" Schedule 40 PVC discharge pipe
- Molded pump support platform raises pump off bottom of pit and helps secure pump during shipping
- Two 4" inlet hubs with rubber grommet seals provided
- Gasket sealed cover – radon ready
- Alarm and Wi-Fi enabled models available



Battery back-up pump ready! Platform designed to properly locate a Liberty Pumps 441 or 442 back-up pump.



**NightEye®**  
Wireless Enabled  
Models Available

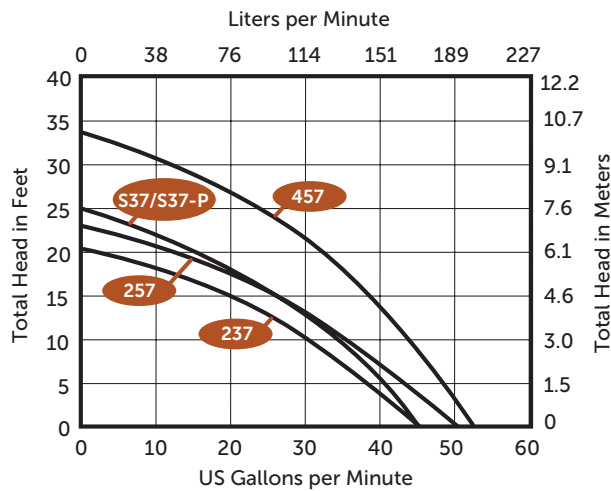


# innovate. evolve.

# SPAC-Series

## Performance Curves

60 Hz, 3450 RPM



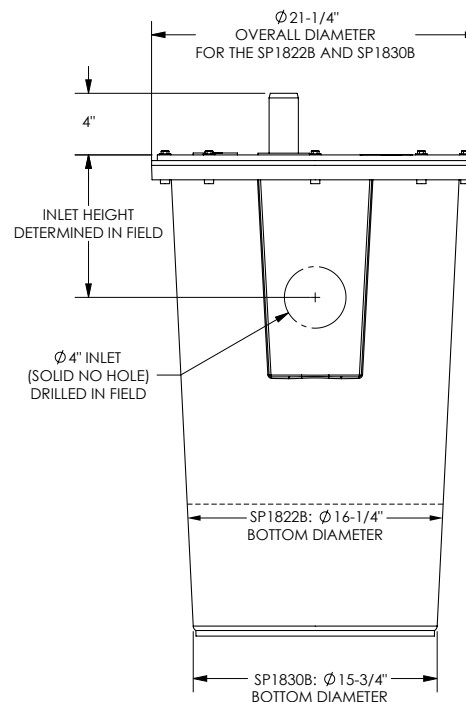
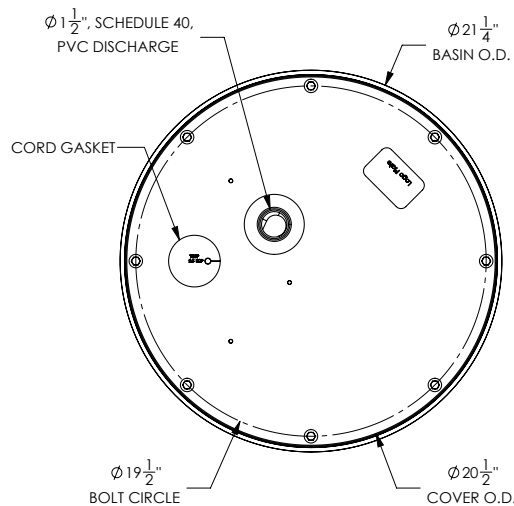
## Alarmed Systems

Now have the assurance of early warning in the event of a high-level condition with an alarm option! Select from a standard alarm or a wireless-enabled NightEye® alarm. Intelligent pump monitoring and alarm notifications sent to your smart device - anywhere in the world.



**NightEye**  
Wireless Enabled  
Models Available

## Dimensional Data



SP1822B 22-1/2" overall height  
SP1830B 31-1/4" overall height

## Models

22" MODEL	30" MODEL	SUMP PUMP	HP	VOLTS	AMPS
SPAC-237	SPAC30-237	Model 237	1/3	115	5.2
SPAC-257	SPAC30-257	Model 257	1/3	115	5.2
SPAC-S37	SPAC30-S37	Model S37	1/3	115	6.5
SPAC-S37-P	SPAC30-S37-P	Model S37-P	1/3	115	6.5
SPAC-457	SPAC30-457	Model 457	1/2	115	7.3

For 25' cords on 237, 257, or 457 models, add a "-2" suffix to model number. Example SPAC-237-2.

For a standard alarm model, add a "-ALM-P1" suffix to model number. Example SPAC-457-ALM-P1.

For a Wi-Fi enabled alarm model, add a "ALM-P1-EYE" suffix to model number. Example SPAC-S37-ALM-P1-EYE.

See 230-Series, 250-Series, S30-Series or 450-Series literature for complete pump specifications.

Specifications subject to change without notice.

Copyright © Liberty Pumps, Inc. 2025 All rights reserved. LLIT006682-R08/25

Liberty Pumps - 7000 Apple Tree Avenue - Bergen, New York 14416  
Phone 800-543-2550 - Fax 585-494-1839 - www.LibertyPumps.com