

American Standard

CERAMIX™

BIDET FITTING

with EverClean™ Finish

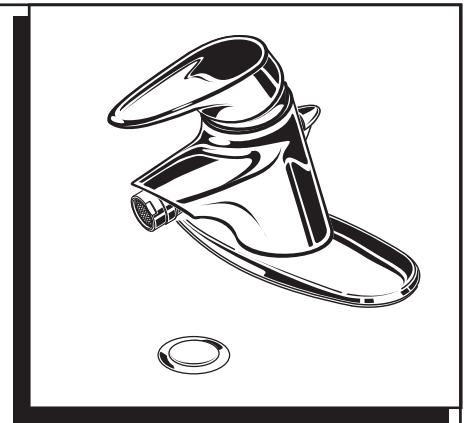
Congratulations on purchasing your American Standard faucet with EverClean finish found only on American Standard faucets.

EverClean Finish

- One wipe effortlessly removes spots
- Eliminates the need for cleaners and scrubbing
- Permanent surface protectant remains beautiful for the life of the faucet
- EverClean™ available on: Polished Chrome, Satin Nickel, Stainless Steel, Polished Brass (or any combination of these finishes)

To ensure that your installation proceeds smoothly-please read these instructions carefully before you begin.

Installation Instructions 2000.011



Certified to comply with ASME A112.18.1M

M968761 Rev. 1.1

TOOLS REQUIRED



Channel Locks



Adjustable Wrench



Plumbers' Putty or Caulking



Phillips Screwdriver

EverClean™ Finish Care Instructions

American Standard's EverClean finish will wipe clean with a soft, dry cloth. A soft cloth with clean water may also be used, if desired. No additional cleaning products are required.

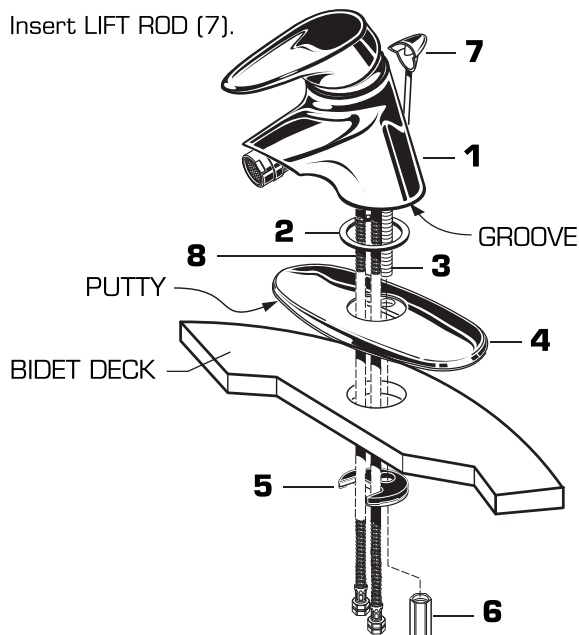
DO NOT USE: Soaps, acid, polish, abrasives, harsh cleaners, or a cloth with a coarse surface.

1 INSTALL FAUCET

CAUTION

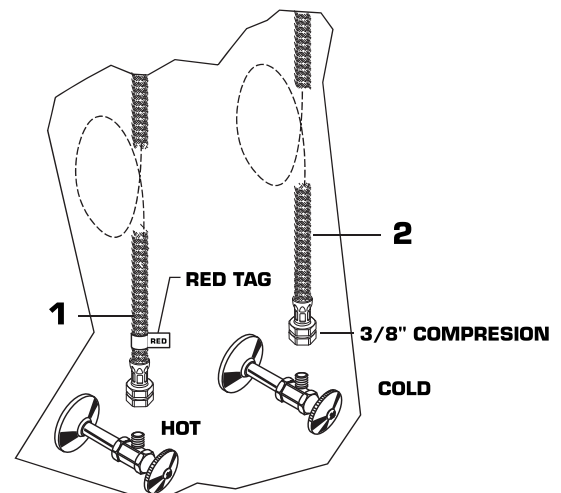
Turn off water at main supply.

- For 3-hole (4" centers) installation, apply Putty to underside of Escutcheon (optional 4) and place over holes in lavatory sink with tab towards back.
- Feed FLEXIBLE HOSES (8) through Rubber Ring (2) and through hole in Escutcheon (optional 4) or mounting surface. Escutcheon (4) is optional on single hole lavatories. Make sure Rubber Ring (2) is seated in groove in base of Faucet (1).
- From below, push Mounting Gasket with Mounting Washer (5) over Stud (3) and secure with Nut (6), pushing Faucet (1) to back of sink, so Stud (3) rests against sink hole. Before final tightening, adjust Faucet (1) and Escutcheon (4) so that they are centered.
- Insert LIFT ROD (7).



2 MAKE WATER SUPPLY CONNECTIONS

- Turn off hot and cold water supplies before beginning.
- Connect FLEXIBLE SUPPLIES (1, 2) directly to wall supplies. Connection on fitting supplies are 3/8" compression. Connect left supply to (Hot Marked with a Red Tag) and right supply to Cold wall supply. Use adjustable wrench to tighten connections. Do not over tighten.
- Faucet supplies are 18" long from faucet base.
- Note: If additional supply length is required, installer must purchase additional parts separately.
- Important: If SUPPLY HOSES (1, 2) are too long, loop as illustrated to avoid kinking.



3

INSTALL POP-UP DRAIN

- Push Tail piece **(11)** down into Trap **(C)** (threaded end up).
- Thread Locknut **(5)**, Washer **(4)** and Gasket **(3)** (Bevel side up) onto Drain Body **(10)**.
- Apply a bead of Putty **(D)** to underside of Flange **(2)**.
- Feed Drain Body **(10)** up through Sink **(A)** and thread the Flange **(2)** fully onto Drain Body **(10)**.
- Tighten Locknut **(5)** firmly, keeping the pivot rod hole pointed towards the back of the sink.
- Assemble Pivot Rod **(9)** as shown in Figure-4B. Notice the position of the Concave Washer **(G)**.
- Insert Pivot Rod **(9)** into Drain Body **(10)** and tighten Pivot Nut **(F)**.
- Push Tailpiece Insert **(12)** into Tailpiece **(11)** and push Tailpiece **(11)** up and thread tightly into Drain Body **(10)**.
- Position Extension Rod **(7)** onto Pop-Up Rod **(E)** and tighten Thumbscrew **(6)**.
- Remove one end of Clip **(8)** from Pivot Rod **(9)** by squeezing ends together while sliding.
- Insert Pivot Rod **(9)** into second or third hole in Extension Rod **(7)** and reassemble Clip **(8)**.
- Drop Stopper **(1)** into Drain Body **(10)**.
- Adjust stopper height by repositioning Extension Rod **(7)** and tightening Thumbscrew **(6)**.

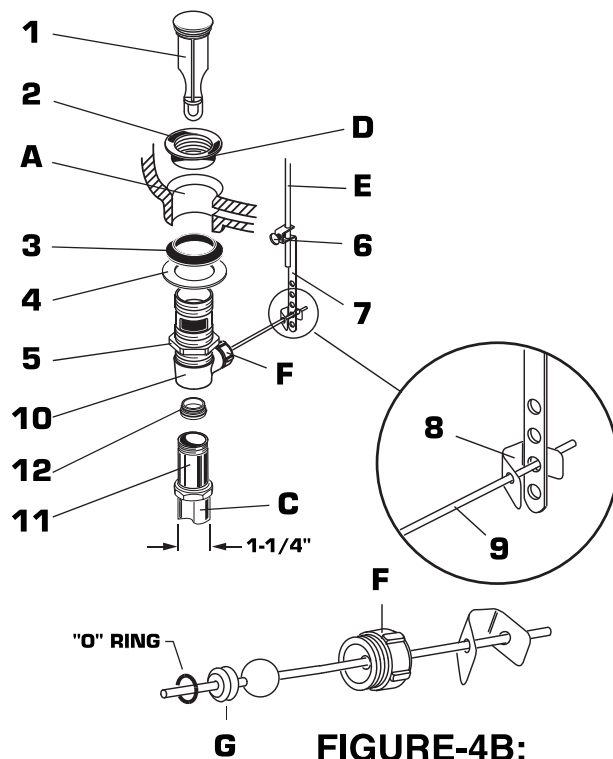
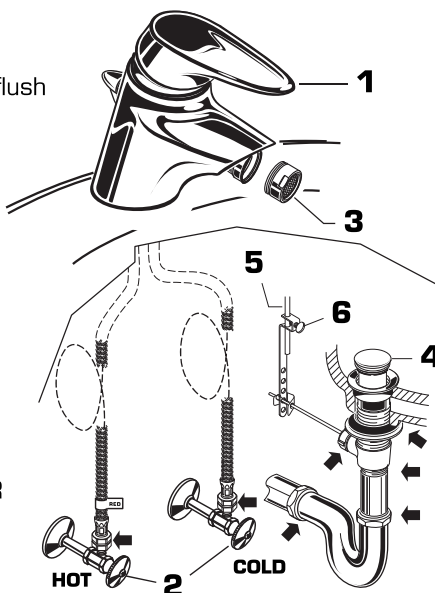


FIGURE-4B:

4

TEST INSTALLED FITTING

- With HANDLE **(1)** in OFF position, turn on WATER SUPPLIES **(2)** and check all connections for leaks.
- Remove AERATOR **(3)**.
- Operate HANDLE **(1)** to flush water lines thoroughly.
- Replace AERATOR **(3)**.
- Operate Pop-Up and fill lavatory with water. Check that DRAIN STOPPER **(4)** makes a good seal and retains water in lavatory.
- Adjust stopper height by repositioning Pop-Up ROD **(5)** and tightening THUMBSCREW **(6)**.

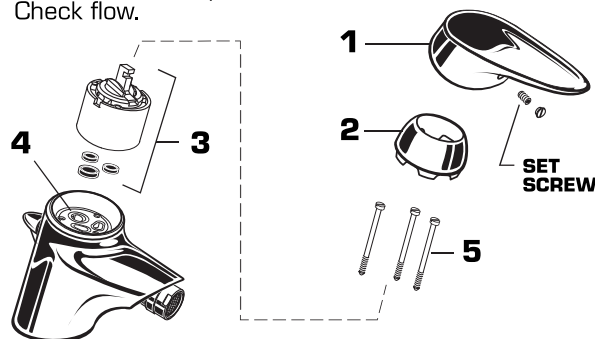


- Release DRAIN STOPPER **(4)** and check all drain connections and "P" trap for leaks. Tighten if necessary.

5

SERVICE

- If faucet drips, operate handle several times from "off" to "on". Do not apply excessive force.
- Clogged CARTRIDGE inlets may cause reduced flow in "full on" hot or cold. To clean inlets, first turn off water supply, then:
- Remove HANDLE **(1)**, CAP **(2)**, and CARTRIDGE **(3)**. Clean inlets and MANIFOLD **(4)**.
- Reassemble CARTRIDGE **(4)**, alternately tightening SCREWS **(5)**. Replace CAP **(2)** and HANDLE **(1)**. Check flow.



6

ADJUST HOT LIMIT STOP

By restricting handle rotation and limiting the amount of hot water allowed to mix with the cold, the HOT LIMIT SAFETY STOP reduces risk of accidental scalding. To set the maximum hot water temperature of your faucet, all you need to do is adjust the setting on the HOT LIMIT SAFETY STOP.

- Refer to step "5" to remove handle, then;
- Use a flat blade screwdriver or your fingers to pull up and rotate red HOT LIMIT SAFETY STOP **(1)**. Follow Step "A" or "B" to adjust min./max. discharge temperature. "O" being the hottest to "7" the coldest temperature setting. Factory set at "O".

