



NEW AND IMPROVED

# 2-Pole Ground Fault Circuit Interrupter (GFCI)

[usa.siemens.com/gfci](http://usa.siemens.com/gfci)

## Features

- Available in Plug-in, Plug-On Neutral and Bolt-on style
- Available up to 65kA interrupting rating
- Provides Class A 5mA personnel protection or 30mA equipment protection
- Includes a Self-Test as required by UL943 as an added safety feature.
- Suitable for a variety of construction applications: HVAC, spas, hot tubs, kitchens, bathrooms, etc.
- Resists false tripping (shielded to prevent RF interference)
- UL and cUL Listed
- HACR and SWD rated



2-pole (35-60A)

2-pole (15-30A)

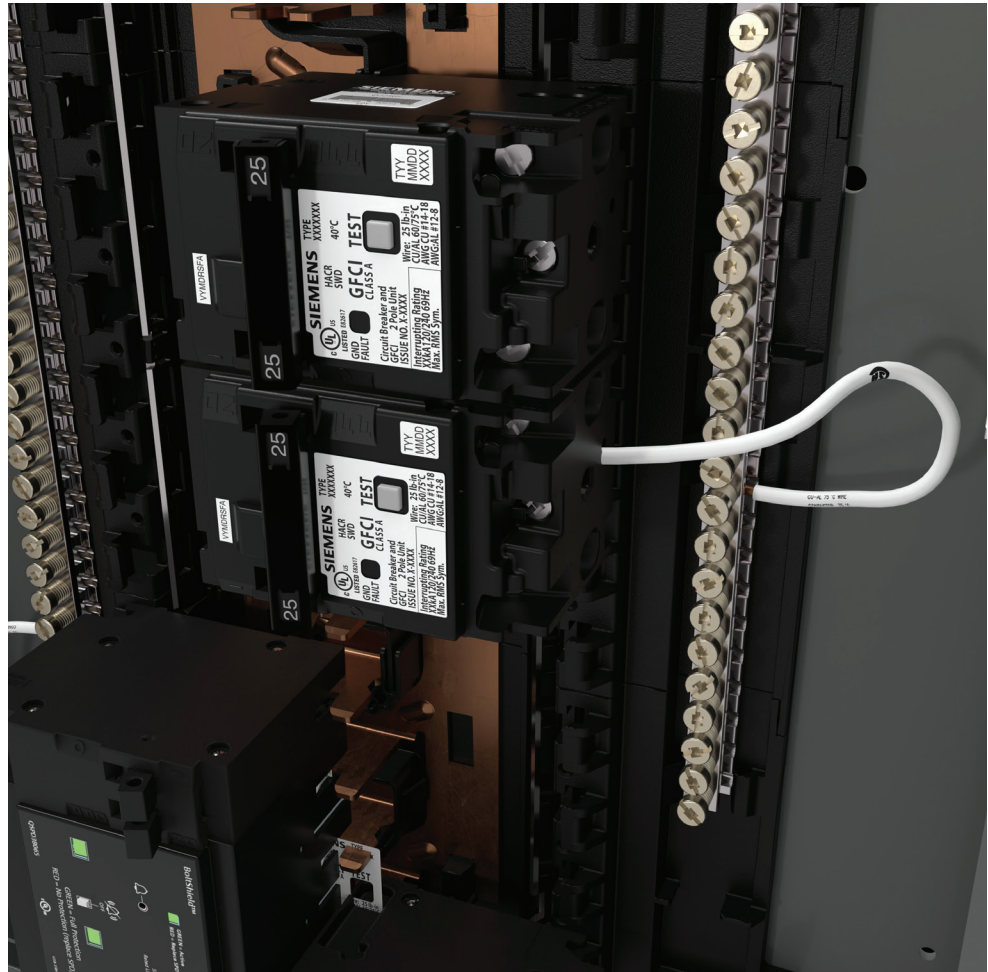
**SIEMENS**

With the extension of the National Electrical Code 2020 to protect more areas of the home, Siemens has expanded our GFCI product line, continuing to provide complete home safety for our customers. Siemens GFCI circuit breakers are UL and cUL listed and offers Class A 5mA Personnel Protection or a 30mA Equipment Protection Circuit Breaker.

The new GFCI 2pole breakers offer a smaller footprint, a more robust design, a Plug-On Neutral design and can go up to 65kA interrupting rating. The initial launch will include breakers up to 30A and the remaining (35-60A) will release Summer 2025.

GFCIs are an effective means of preventing severe electrical shock.

Ground faults occur when the electrical current in an appliance strays outside its normal path, and the human body or equipment becomes part of the path through which the electrical current may flow.



5mA personnel protection GFCIs are installed to protect areas of the home, such as the kitchen, bathroom or laundry, where electrical appliances or products may come into contact with water. If the measure of current going to an outlet is greater than 5mA of the current coming back from the outlet, the GFCI will open the circuit to stop the flow of electricity in order to protect a person from getting shocked.

30mA equipment protection GFCIs are often installed in light commercial/industrial applications and function in much the same way in order to protect equipment from getting electrocuted.

## Class A 5mA Personnel Protection GFCI

### Plug-in Ground-Fault Circuit Interrupters



Breaker Type	Amp Rating	10,000 A IR Catalog No.	22,000 A IR Catalog No.	65,000 A IR Catalog No.
<b>2-Pole 120/240V AC Plug-in</b>				
QPFB/QPHFB/HQPFB	15	Q215GFP	Q215GFH	Q215GFHH
	20	Q220GFP	Q220GFH	Q220GFHH
	25	Q225GFP		
	30	Q230GFP	Q230GFH	Q230GFHH
QPF/QPHF	35	QF235AP		
	40	QF240AP	QF240AH	
	45	QF245AP		
	50	QF250AP	QF250AH	
	60	QF260AP	QF260AH	

### Plug-On Neutral Ground-Fault Circuit Interrupters



Breaker Type	Amp Rating	10,000 A IR Catalog No.
<b>2-Pole 120/240V AC Plug-On Neutral</b>		
QPFBN	15	Q215GFNP
	20	Q220GFNP
	25	Q225GFNP
	30	Q230GFNP

**Legal Manufacturer**

Siemens Industry, Inc.  
3617 Parkway Ln.  
Peachtree Corners, GA 30092  
United States of America

Telephone: +1 (800) 333-7421  
[www.usa.siemens.com/gfci](http://www.usa.siemens.com/gfci)

Order No. RPFL-R2PGF-0524  
© 05.2024, Siemens Industry, Inc.

This document contains a general description of available technical options only, and its effectiveness will be subject to specific variables including field conditions and project parameters. Siemens does not make representations, warranties, or assurances as to the accuracy or completeness of the content contained herein. Siemens reserves the right to modify the technology and product specifications in its sole discretion without advance notice.