

# Assembly Instruction Sheet #S-6627C26 For Style 6627C26

**Tools Required:** Flathead screwdriver, Phillips screwdriver, pliers, wire cutters, wire strippers, electrical tape, safety glasses.

**Light Source:** (13) EU10 35W(Not include)  
**Light Source:** (6) E12 60W(Not include)

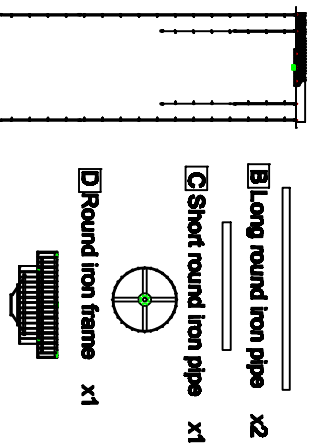
**Light Sources: (29) E12 (any/Not include)**

**Preparation:** Identify and inspect all parts before beginning installation. Check package content list and diagrams below to be sure all parts are present. If any parts are missing or damaged, do not attempt to assemble, install, or operate the boiler. Contact customer service for replacement parts.

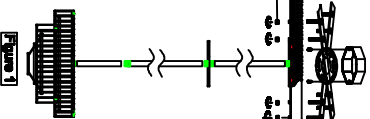
## Δ Warnings and Cautions

Turn off electricity at circuit breaker or main fuse box before installation. Consult a licensed electrician if in doubt. These instructions are provided for your safety. It is very important you read them completely before installing the bulbs. We strongly recommend that a licensed, professional electrician perform the installation. Disconnect fixture from power source before replacing bulbs. Make sure bulbs are given sufficient time to cool before new bulbs are installed.

## Package Contents



### STEP 1 - Release Crossbar from Ceiling Canopy.



**Figure 1**

**E**Bottom shelf x1

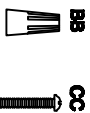
**D Round iron frame x1**

**C** Short round iron pipe x1

**B** Long round iron pipe x2

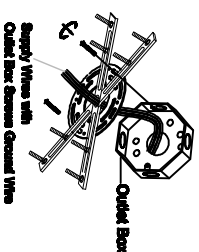
## Hardware Contents

PART	DESCRIPTION	QUANTITY
BB	Wire nut	2pcs
CC	Screw	2pcs



**STEP 2 - Attach Crossbar to Outlet Box**  
 A) Pass the supply wires through the Crossbar (EE).

Attach the Crossbar (EE) to the Outlet Box (CC) with the head of the Green Ground Screw facing you. Secure it with Outlet Box Screws (CC). Tighten until snug.

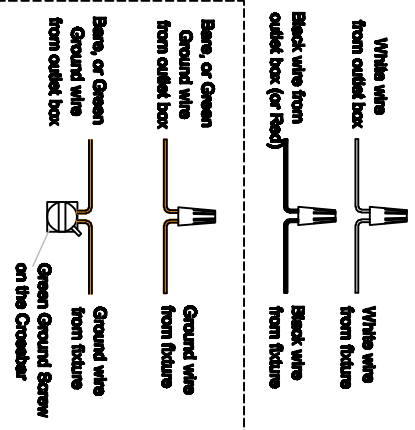


## Figure 2

### STEP 3 - Wire Connections

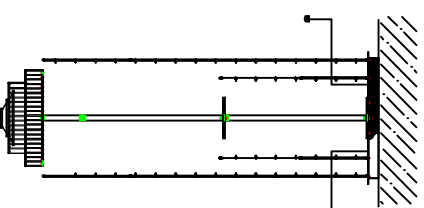
**A. Use standard wire connectors to make all wire**

connections. Twist connectors until wires are tightly joined together. Wrap each connection with approved electrical tape and carefully stuff all the connected wires into the Outlet Box.



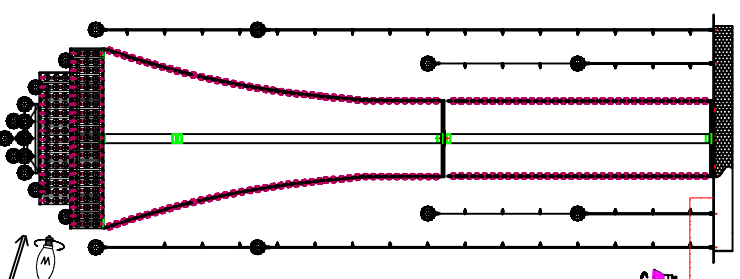
### Figure 3

#### STEP 4 - Install Ceiling Canopy to Ceiling



### Figure 4

### STEP 5 - Install Crystal and Bulbs.



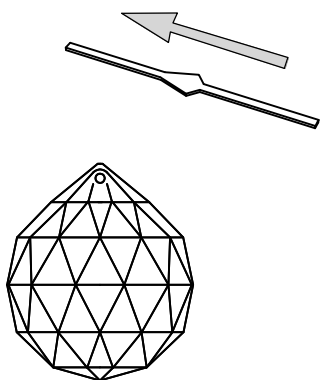
## WARNING

**THIS FIXTURE IS VERY HEAVY  
AND NEEDS TO BE REINFORCED  
ACCORDINGLY**

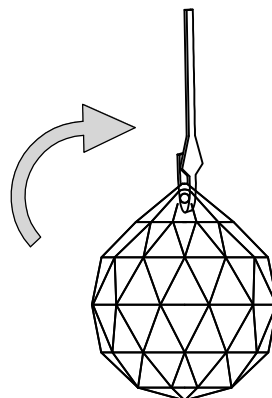
### Figure 5

# THE CRYSTAL BALL INSTALLATION INSTRUCTIONS

1



2



3

