

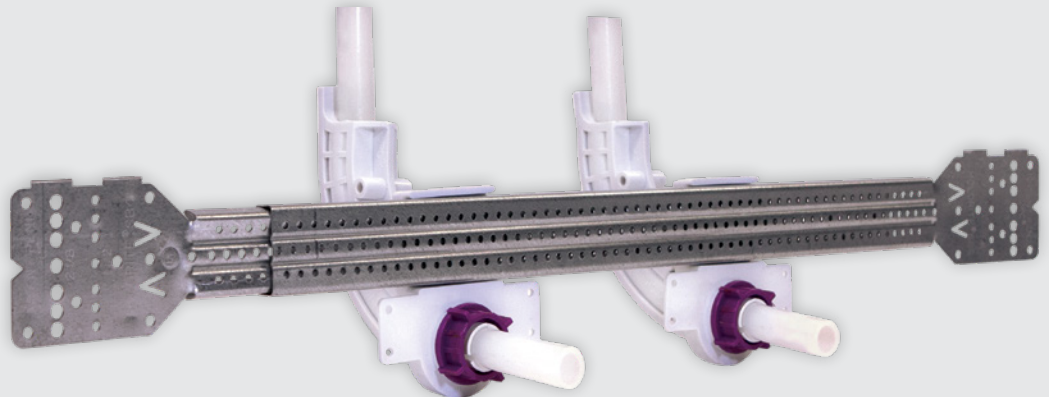


**HOLDRITE®**  
CONVERTING MAKESHIFT METHODS INTO ENGINEERED SOLUTIONS™

**ProGuard®**

# PROTECT YOUR STUB-OUT

COMPATIBLE WITH PEX, COPPER AND CPVC



**PEX STUB-OUT**

**PICK YOUR STUB-OUT METHOD**

**PEX TO COPPER STUB-OUT**



Visit [www.HOLDRITE.com](http://www.HOLDRITE.com) to view HOLDRITE ProGuard® installation videos, technical information, and list pricing.

# Wall Clearance Analysis: PEX Stub-Out Support

## HOLDRITE® the Expert in PEX Stub-Out Supports

For over fifteen years, HOLDRITE® has been the expert in pioneering and producing innovative PEX stub-out support products for plumbing contractors, mechanical engineers, and PEX manufacturers in the North American potable water system market.

As the industry leader in stub-out pipe supports, our engineering design team has seen our PEXRITE® technologies successfully installed by contractors. Their unique requirements led us to a more thorough understanding of PEX tubing performance, differences in regional installation methodologies, extreme climate and temperature ranges, and the challenges of various plumbing applications.

At the forefront of the evolution of PEX in North America, HOLDRITE can listen, learn, and innovate within the plumbing ecosystem. With this applied knowledge we continue to expand our reputation for "Converting Makeshift Methods into Engineered Solutions<sup>SM</sup>."

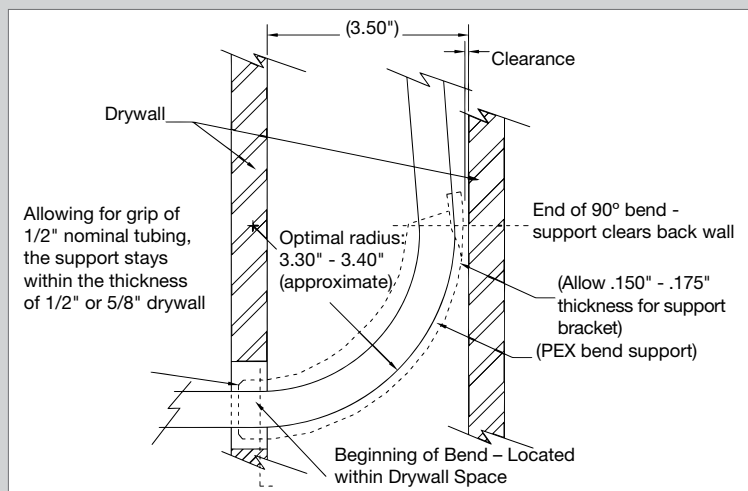
## Observation and Discussion: Ideal PEX Stub-Out Solution

Below is a commonly observed schematic of a PEX stub-out within a confined wall that demonstrates the risk of extreme bending of PEX, the challenges of fitting PEX within the wall, and the ideal solution for a PEX stub-out support.

**Figure 1: Schematic of Commonly Observed In-Wall PEX Stub-Out with Ideal Bend Support**

Ideal Solution - Broadest PEX Bend that:

- a) Fits within wall, including bend support
- b) Remains flush with drywall surface
- c) Retains nominal clearance at rear of installation
- d) Allows nominal clearance length for gripping tubing at near right angle exit from wall



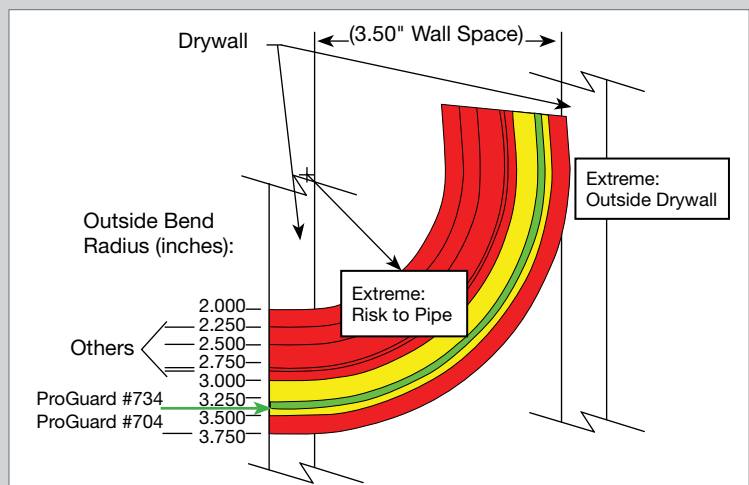
## Conclusion: HOLDRITE ProGuard® #734- Optimally Designed to Protect the PEX Stub-Out

The HOLDRITE ProGuard® #734 in-wall PEX stub-out solution provides a rigid installation while maintaining the optimal outside bend radius range recommendation of 3.3\" to 3.4\". It also locks the stub-out in the Z-axis to prevent unwanted front to back slippage, making this patent pending design the ideal solution.

**Figure 2: In Wall PEX Stub-Out Radius Analysis**

Summary: Bend radius that is too small risks:

- a) Kinking or flattening of tubing at installation, or due to movement of tubing in wall
- b) Reduced flow rate
- c) Increased turbulence noise
- d) Loss of PEX tubing warranty
- e) Weakening or damage to tubing
- f) Need for repair, to replace kinked tubing



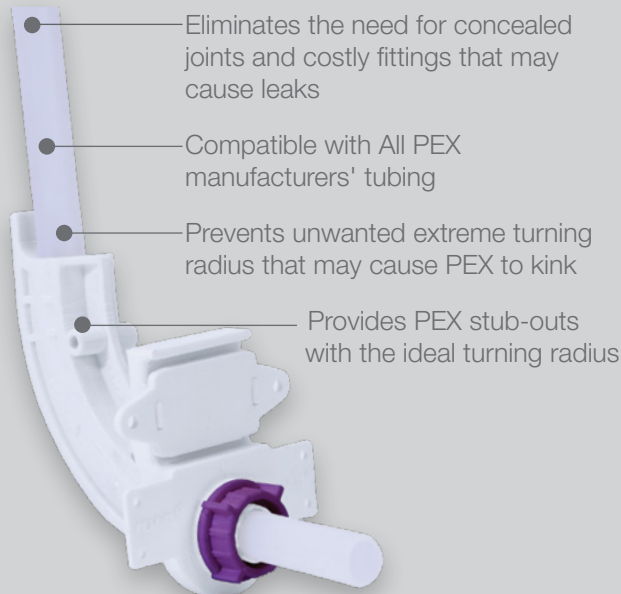
## Pick Your Stub-Out Method

### PEX TUBING

**HOLDRITE ProGuard®**

**#734**

1/2" CTS (PEX only)



### COPPER OR RIGID TUBING

**HOLDRITE ProGuard®**

**#731 or #732**

1/2" CTS or 3/4" CTS

Eliminate the need for soldering

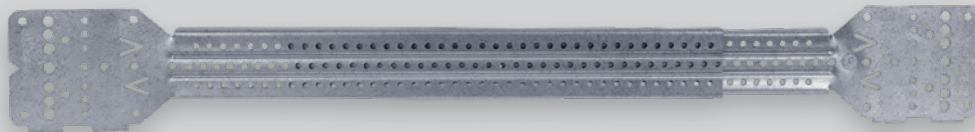
Compatible with PEX, Copper or CPVC tubing 1/2" or 3/4" CTS



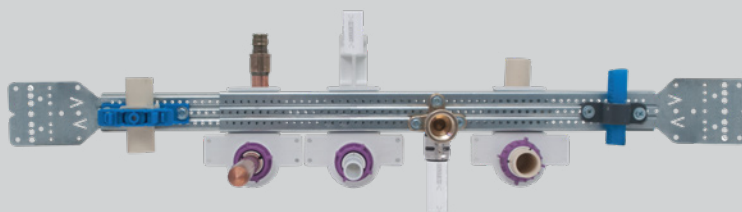
- Secures tubing from unwanted forward or backward movement
- Protects PEX stub-outs and ensures they are inside the wall envelope
- Provides 360° turning radius

- Reduces noise and vibration
- Fire Rated: Meets UL 94 V-0
- Fast and easy to install
- Tightens by hand — no tools or hardware required

### HOLDRITE ProGuard® Integrates Directly with #SB3 or #SB4 HOLDRITE® Stout Bracket® Only



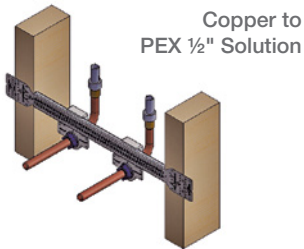
- Telescopes between studs for stout support (10 1/4" to 24")
- Ideal system for lavatory/sink, toilet, shower, water heater and vertical support applications
- Great versatility - Install bracket flush against the stud or inset bracket within the stud bay
- Supports both 2-eared and 3-eared 90s – Ideal for shower heads
- Compatible with many HOLDRITE® and other manufacturers' clamps



# HOLDRITE ProGuard® by Application

HOLDRITE ProGuard® integrates with the HOLDRITE® #SB3/#SB4 platform to provide an engineered solution for various construction projects (single family, multi-family, hotel, other). Regardless of what type of material (PEX, copper, or CPVC) selected by the contractor, or application (sink, toilet, shower, vertical mid-span, other) that requires support and alignment, HOLDRITE® provides a professional system that is versatile, fast & easy to install, protects the stub-outs required turning radius, and secures the tubing from unwanted forward or backward movement.

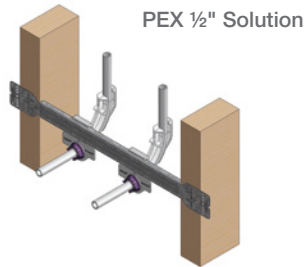
## SINK



HOLDRITE ProGuard®  
#SB3-7312

OR

## SINK



HOLDRITE ProGuard®  
#SB3-7342



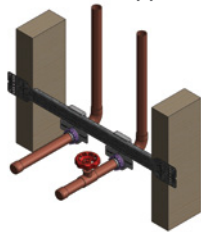
## KITCHEN



## WATER HEATER

### WATER HEATER

#### Copper 3/4" Solution

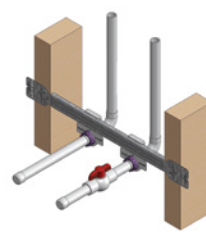


HOLDRITE ProGuard®  
#SB3-7322

OR

### WATER HEATER

#### CPVC 3/4" Solution



HOLDRITE ProGuard®  
#SB3-7322

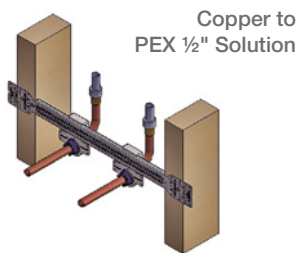




## BATHROOM



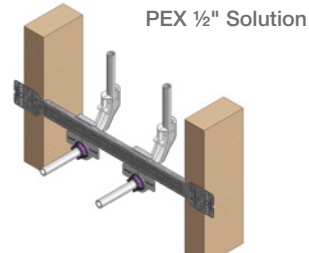
### LAVATORY



**HOLDRITE ProGuard®**  
#SB3-7312

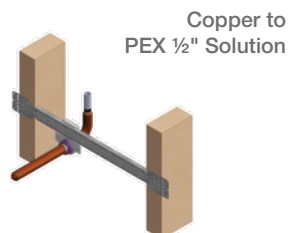
OR

### LAVATORY



**HOLDRITE ProGuard®**  
#SB3-7342

### TOILET



**HOLDRITE ProGuard®**  
#SB3-7311

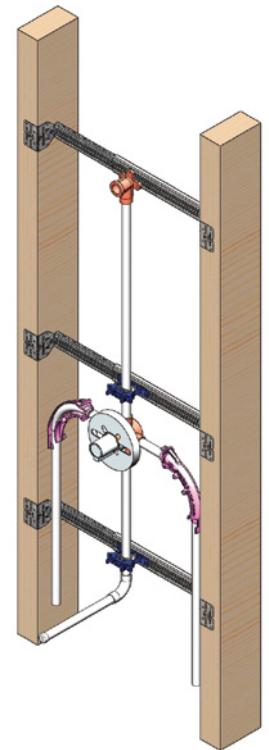
OR

### TOILET



**HOLDRITE ProGuard®**  
#SB3-7341

### TUB/SHOWER SOLUTION



**HOLDRITE® #SB3**  
**HOLDRITE® #255**  
**PEXRITE® #704**



# HOLDRITE ProGuard® Installation Instructions

## HOLDRITE ProGuard® #734 Installation Instructions

- 1** Secure bracket to studs using two screws/nails at each end



- 2** Secure #734 clamps at desired positions with rear nut



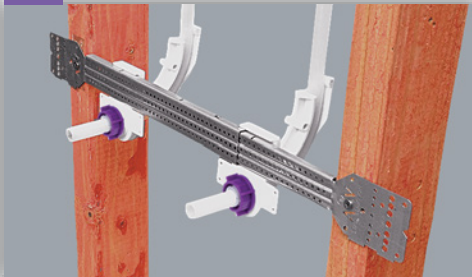
- 3** Slide 1/2" tubing through clamp



- 4** Bend PEX into clamp. Then tighten front nut



- 5** Repeat for second clamp and installation is complete

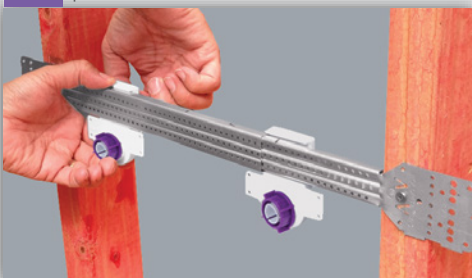


## HOLDRITE ProGuard® #731 Installation Instructions

- 1** Secure bracket to studs, using two screws/nails at each end



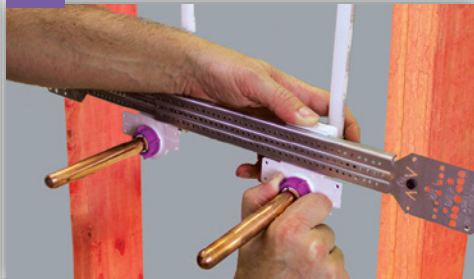
- 2** Secure #731 clamps at desired positions with rear nut



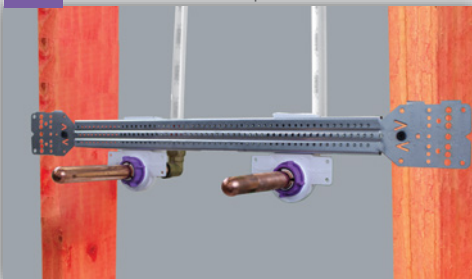
- 3** Slide 1/2" tubing through clamp



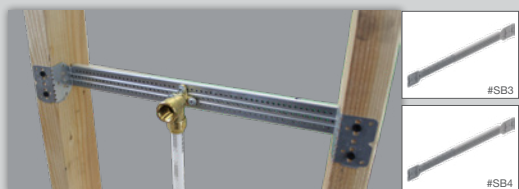
- 4** Secure tubing by tightening front nut



- 5** Repeat for second clamp and installation is complete



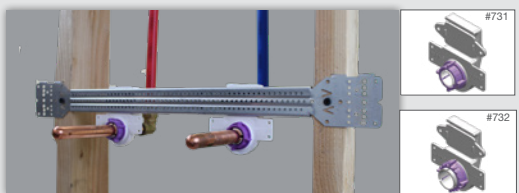
## HOLDRITE® STOUT-BRACKET™



- Galvanized telescoping bracket
- Ideal for shower, sink/lavatory, toilet, water heater, vertical mid-span, and more
- Supports both 2-eared and 3-eared 90s
- Telescoping design supports PEX, copper, and CPVC, and other items
- Integrates with ProGuard™ #731, #732, and #734

Model #	Bracket Size	For Pipe Size(s)	Box Qty
SB3	10-1/4" to 17-1/2"	various	50
SB4	14-1/2" to 24"	various	50

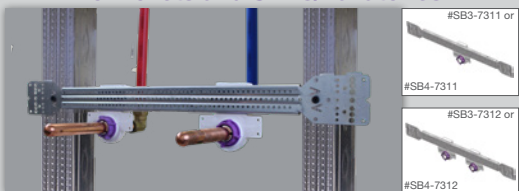
## HOLDRITE ProGuard®



- Stub-out clamps that integrate with model #SB3 and #SB4
- Compatible with PEX, CPVC, or Copper Tubing
- Flame Rated: UL 94 V-0
  - #731 - Stub-out clamp ideal for 1/2" CTS PEX-to-copper transition, copper, CPVC at lavatory/sink or toilet
  - #732 - Stub-out clamp ideal for 3/4" CTS PEX-to-copper transition, copper or CPVC tubing at water heater

Model #	Description	Box Qty
731	stub-out clamp support 1/2" CTS	50
732	stub-out clamp support 3/4" CTS	50

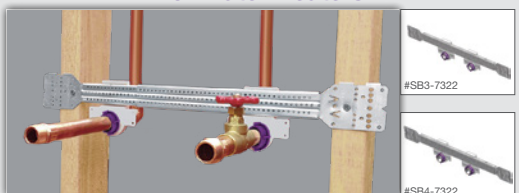
## HOLDRITE ProGuard® for Toilets and Sinks/Lavatories



- **Pre-assembled kits** for toilets and sinks/lavatories (1/2" CTS)
- Compatible with PEX, copper, or CPVC
- Ideal for PEX-to-copper transition
- Flame Rated: UL 94 V-0

Model #	Description	Box Qty
SB3-7311	(1) SB3 Stout Bracket®, (1) 731 stub-out clamp support	25
SB3-7312	(1) SB3 Stout Bracket®, (2) 731 stub-out clamp supports	25
SB4-7311	(1) SB4 Stout Bracket®, (1) 731 stub-out clamp support	25
SB4-7312	(1) SB4 Stout Bracket®, (2) 731 stub-out clamp supports	25

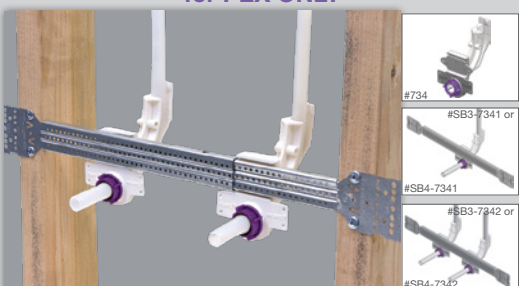
## HOLDRITE ProGuard® for Water Heaters



- **Pre-assembled kits** for water heaters (3/4" CTS)
- Compatible with PEX, copper, or CPVC
- Ideal for PEX-to-Copper transition
- Flame Rated: UL 94 V-0

Model #	Description	Box Qty
SB3-7322	(1) SB3 Stout Bracket®, (2) 732 stub-out clamp supports	25
SB4-7322	(1) SB4 Stout Bracket®, (2) 732 stub-out clamp supports	25

## HOLDRITE ProGuard® for PEX ONLY



- **Pre-assembled PEX ONLY stub-out and stub-out kits** for toilets and sinks/lavatories
- Provides PEX stub-outs with the ideal turning radius
- Prevents unwanted extreme turning radius that may cause PEX to kink
- Eliminates in-wall fittings and concealed joints
- Flame Rated: UL 94 V-0
- Compatible with all manufacturers' 1/2" CTS PEX tubing

Model #	Description	Box Qty
734	turn-out support for 1/2" CTS PEX tubing only	50
SB3-7341	(1) SB3 Stout Bracket®, (1) 734 stub-out clamp support	25
SB3-7342	(1) SB3 Stout Bracket®, (2) 734 stub-out clamp supports	25
SB4-7341	(1) SB4 Stout Bracket®, (1) 734 stub-out clamp support	25
SB4-7342	(1) SB4 Stout Bracket®, (2) 734 stub-out clamp supports	25



**HOLDRITE®**  
CONVERTING MAKESHIFT METHODS INTO ENGINEERED SOLUTIONS™

**ProGuard®**  
PROTECT YOUR STUB-OUT

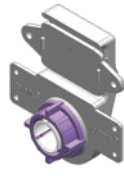
## HOLDRITE PROGUARD® SUPPORTS

HOLDRITE® STOUT BRACKET®



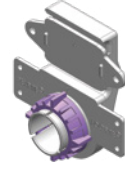
#SB3 or #SB4

HOLDRITE PROGUARD®



#731

HOLDRITE PROGUARD®



#732

HOLDRITE PROGUARD®



#734

HOLDRITE® STOUT BRACKET®  
WITH HOLDRITE PROGUARD®



#SB3-7311 or #SB4-7311

HOLDRITE® STOUT BRACKET®  
WITH HOLDRITE PROGUARD®



#SB3-7312 or #SB4-7312

HOLDRITE® STOUT BRACKET®  
WITH HOLDRITE PROGUARD®



#SB3-7322 or #SB4-7322

HOLDRITE® STOUT BRACKET®  
WITH HOLDRITE PROGUARD®



#SB3-7341 or #SB4-7341

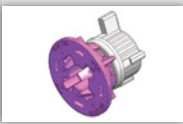
HOLDRITE® STOUT BRACKET®  
WITH HOLDRITE PROGUARD®



#SB3-7342 or #SB4-7342

## PEXRITE® PEX SUPPORTS

HOLDRITE® LOCK-N-LOAD™



#701

PEXRITE®



#704

PEXRITE POP-UP™



#708

PEXRITE POP-UP™



#708-E

PEXRITE POP-UP™



#707

PEXRITE POP-UP™



#707-E

PEXRITE®



#705

PEXRITE POP-UP™



#706

HOLDRITE®



#721

HOLDRITE®



#110-R

HOLDRITE®



#709

HOLDRITE®



#709-L

HOLDRITE®



#709-EXT

HOLDRITE®



#103-18 or #103-26

HOLDRITE® STOUT BRACKET®



#SB1S or #SB2S

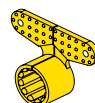
HOLDRITE® STOUT BRACKET®



#SB3 or #SB4

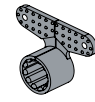
## HOLDRITE® INSERTS AND CLAMPS

HOLDRITE® FLAME  
FIGHTER™ SUSPENSION  
CLAMPS



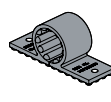
#221-S through  
#222-S

HOLDRITE®  
SUSPENSION CLAMPS



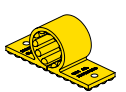
#221 through #226

HOLDRITE® 2-HOLE  
STANDARD CLAMPS



#231 through #236

HOLDRITE® FLAME  
FIGHTER™ 2-HOLE  
STANDARD CLAMPS



#231-S through  
#232-S

HOLDRITE® FLAME  
FIGHTER™ ISOLATOR  
INSERTS



#424-S through  
#426-S

HOLDRITE® COLD LINE  
ISOLATOR INSERTS



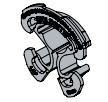
#424-RB through  
#426-RB

HOLDRITE® HOT LINE  
ISOLATOR INSERTS



#424-RR through  
#426-RR

HOLDRITE® ISOLATOR  
INSERTS



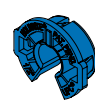
#424 through #426

HOLDRITE® ISOLATOR  
INSERTS



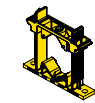
#104 through #106

HOLDRITE® ISOLATOR  
INSERTS



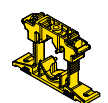
#404-R through  
#406-R

HOLDRITE® FLAME  
FIGHTER™ VARIABLE  
SIZE CLAMPS



#285-S

HOLDRITE® FLAME  
FIGHTER™ VARIABLE  
SIZE CLAMPS



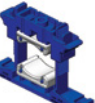
#255-S

HOLDRITE® VARIABLE  
SIZE CLAMPS



#250

HOLDRITE® VARIABLE  
SIZE CLAMPS



#255

HOLDRITE® VARIABLE  
SIZE CLAMPS



#280

HOLDRITE® VARIABLE  
SIZE CLAMPS



#285

Visit [www.HOLDRITE.com](http://www.HOLDRITE.com) to view HOLDRITE ProGuard® installation videos, technical information, and list pricing or call (800) 321-0316.