

## WALL HANGING BEVELLED MIRROR

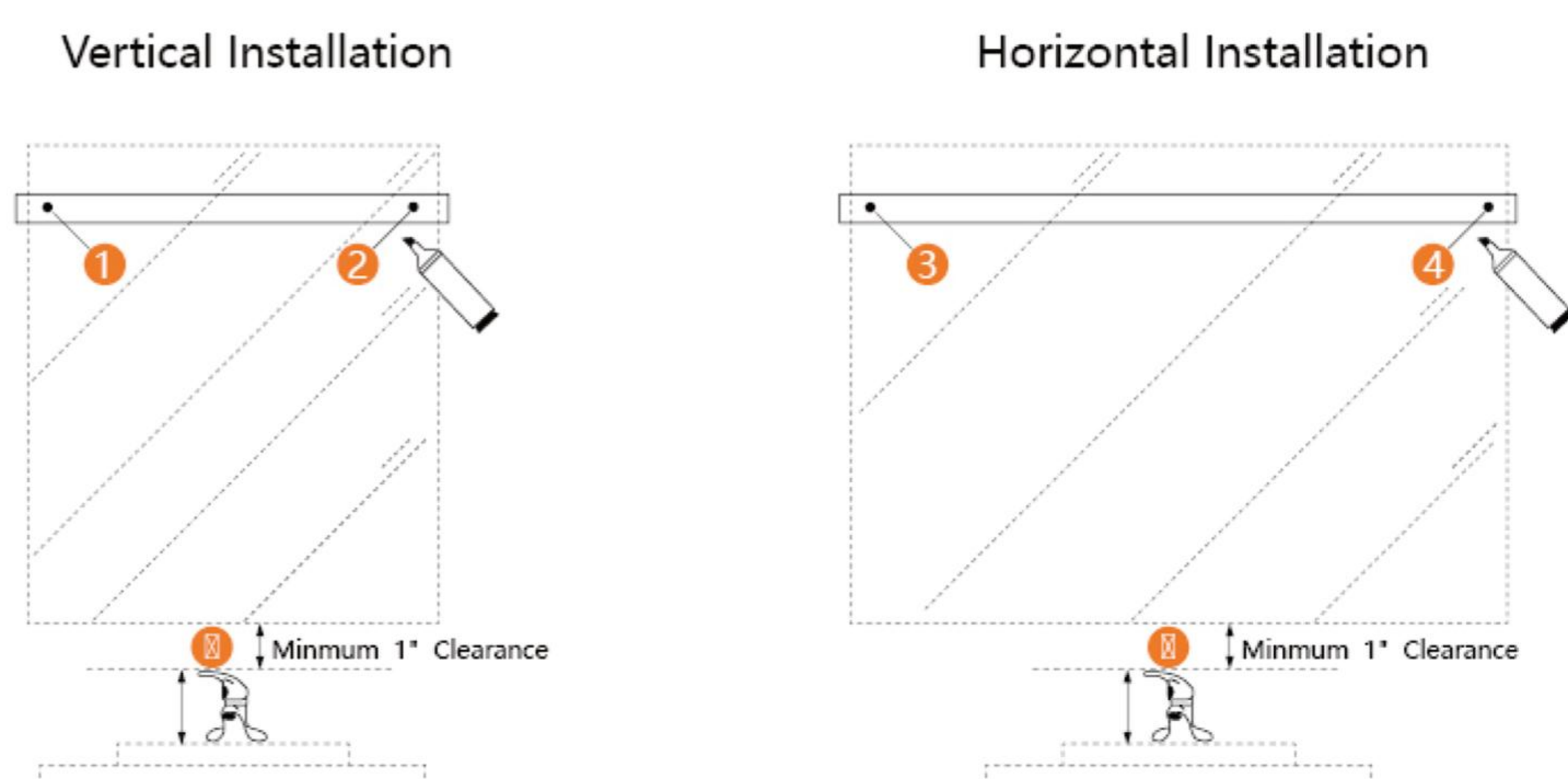
## INSTALLATION SEQUENCE



## Installation Instruction


If you have any problem, please feel free to contact us on sales

3 Decide the installation method as per your reference. Confirm the locations for drilling holes with the positioning ruler, and use a markerto mark the spots ①② or ③④ on the wall.



Note: Please hang the mirror a few inches above the highest part of the faucet.

### How to Use the Positioning Ruler:

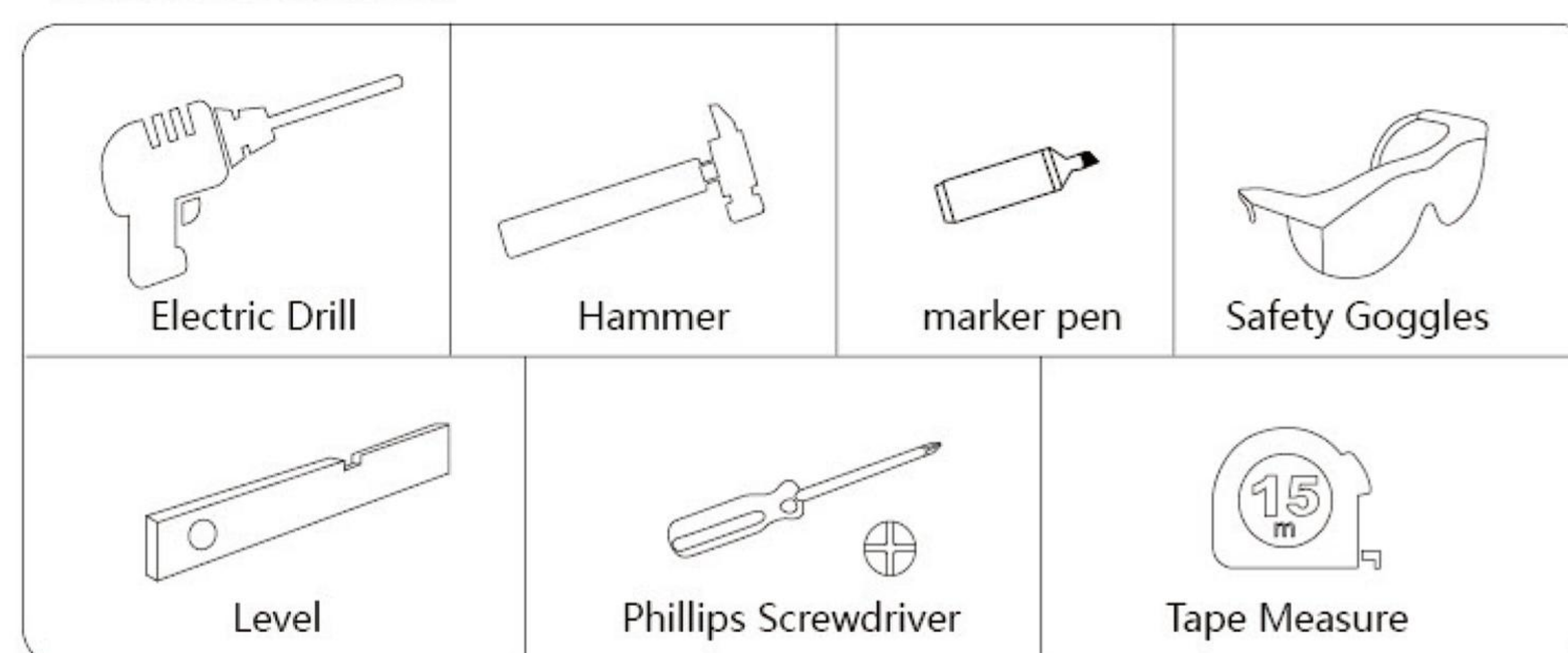
corresponding Spots for drilling   product Size	(Starting Spot)  <b>Positioning Ruler</b> Before installation, please confirm Where and how you would like to hang the mirror.		Hole #1&2 for horizontal installation 14 $\frac{1}{2}$ " (369mm)  Hole # 3&4 for vertical installation 16"	18 $\frac{1}{2}$ " (469mm)   20"
---	---	---	--	--

The positioning ruler makes it easier for you to drill perfect holes for hanging the mirror

- ① Confirm the location to hang the mirror first, and make sure the positioning ruler is placed against the wall horizontally by using a level ruler
- ② The lower line is product size. According to your product size, you can find the corresponding hole spots for drilling, which are indicated on the upper line.
- ③ Mark the spots accordingly, #1&2 for horizontal installation while # 3&4 for vertical installation.

 **Note:** Ensure that the fixing location is able to take the weight of the complete fitting .

## 1.Installation tools.



2. Accessories: 4pcs 304 stainless steel screws, 4pcs anchors, 1pcs Positioning Ruler (2pcs screws & 2pcs anchor are for backup).

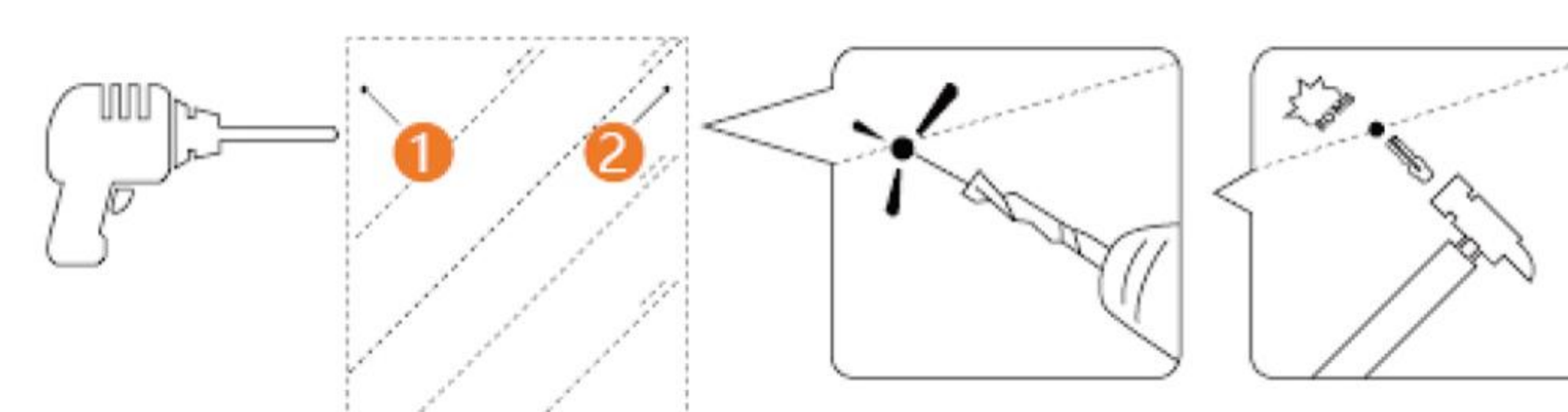


①

### Drill pilot holes on the marked spots

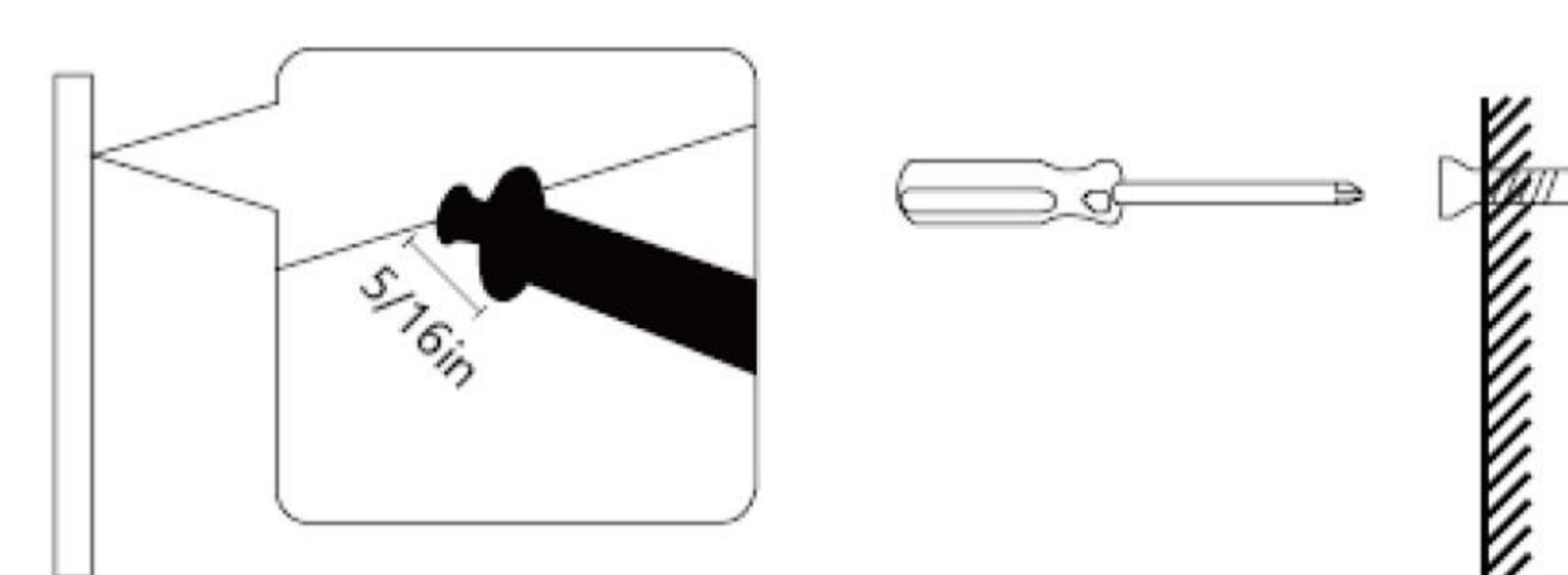
4. Use an electric drill to punch two 1/4" (6mm) holes at the marked spots, and then apply wall anchors with hammer.  
(1/4" (6mm) drill bit, drilling depth in 15/8" (40mm))

 **Note:** Please wear goggles and pay attention to safety.



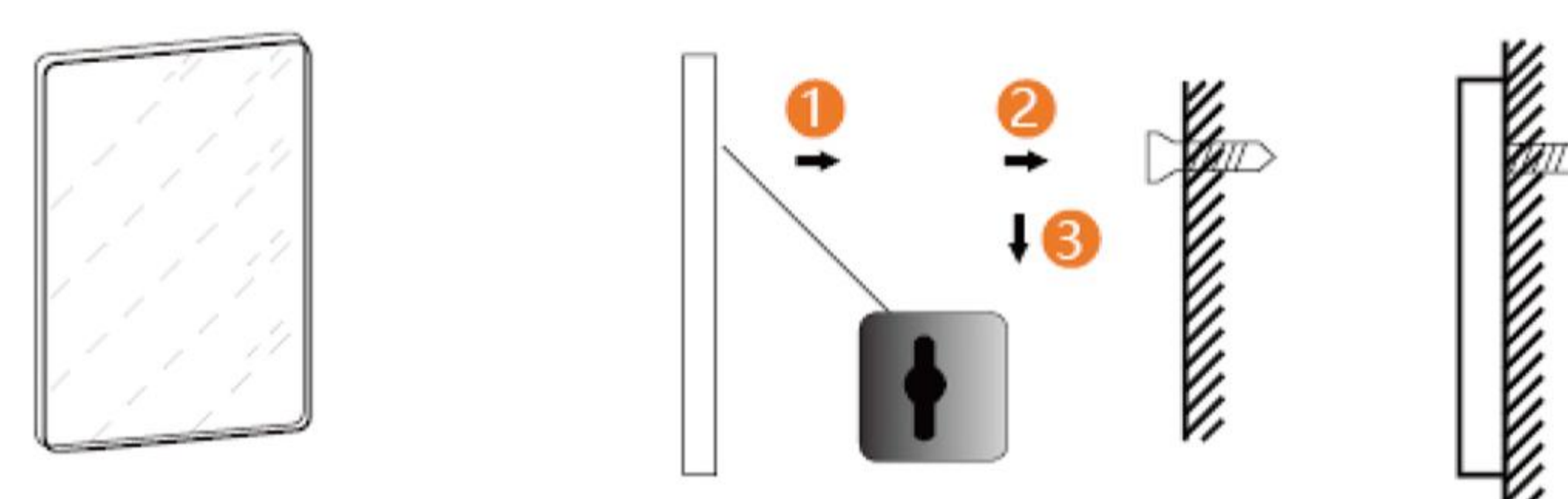
Insert the screw

5. Use the screwdriver to tighten the screw on the wall anchors, set aside 5/16" (7mm) distance to wall.



Mount the mirror on the wall and ensure it is sturdy

6. Hang the mirror on the wall (please confirm the hook is hanging on the screw safely when viewed from the side).



③

②