

TOP FEATURES



SPECIFICATIONS

4 INCH LED

MR16 12V | SQUARE WHITE | RETROFIT | DOWNLIGHT

NW-SQDL-4-MR16-LV-5CT-WH

The NuWatt Recessed Lighting 4 inch MR 16 Retrofit features a GU5.3 Bi-Pin base. The low voltage lighting ensures flicker-free connection, designed to replace up to 75W Halogen MR16 Bulbs. Our bright lights feature a frosted lens for a diffused and seamless lux that are delicate to the eye unlike other MR16 low voltage bulbs that have harsh reflectors causing eye strain.

TECHNICAL SPECS

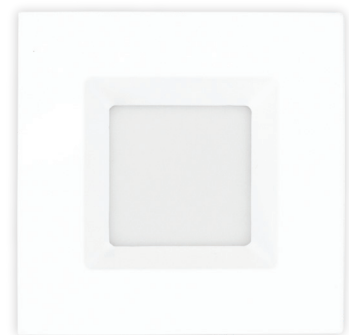
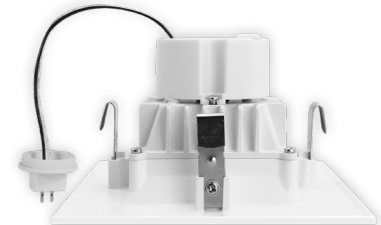
VOLTAGE	AC 12V
WATTAGE	10W
POWER FACTOR	N/A5
LUMENS	660
CRI	90
EQUIVALENCY	75
DIMMABLE	TRIAC DIMMING
BEAM ANGLE	110°
EFFICACY (LM/W)	70
COLOR TEMPERATURE	5CCT COLOR FIELD SELECTABLE ● ● ● ●
	2700K 3000K 3500K 4000K 5000K
OPERATING TEMPERATURE	(-4°F~104°F) -20~40°C
IP RATING	IP54
MOISTURE RATING	DAMP LOCATION

LIFETIME PERFORMANCE

WARRANTY	5 YEAR WARRANTY
LIFETIME HOURS	50,000 HOURS

CONSTRUCTION

HOUSING MATERIAL	ALUMINUM
TRIM MATERIAL	DIE-CAST ALUMINUM
PRODUCT WEIGHT	0.11 KG
PRODUCT DIMENSIONS	5 IN. X 5 IN. X 2.81 IN.
LENS DIAMETER	3 IN.
LENS MATERIAL	NON-YELLOWING ACRYLIC



**DUAL
BI-PIN
PLUG**

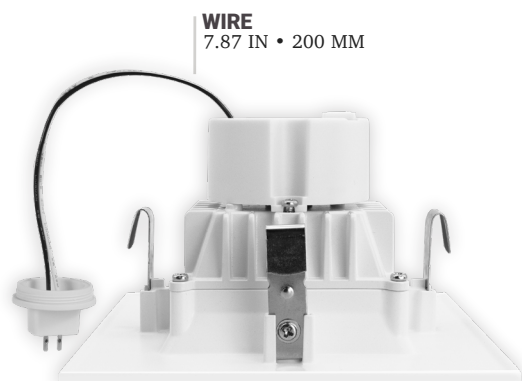


**DURABLE
TENSION
CLIPS**

TECHNICAL

4 INCH | MR16 12V | SQUARE WHITE | RETROFIT | DOWNLIGHT

NW-SQDL-4-MR16-LV-5CT-WH



HEIGHT
2.81 IN
71 MM

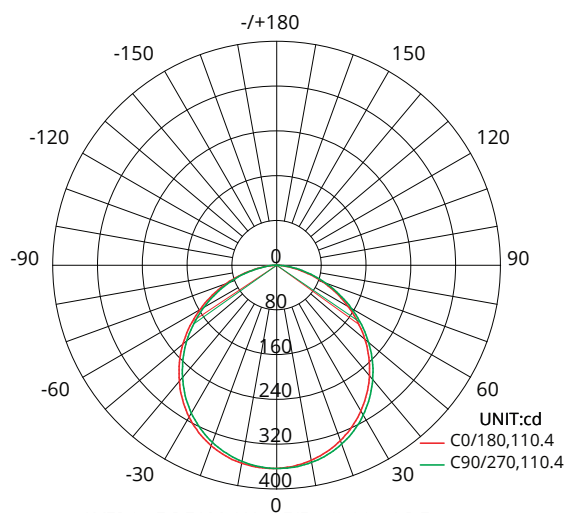
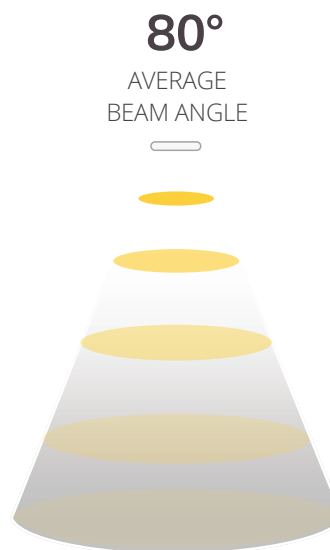
EXTERIOR DIAMETER

5 IN • 127MM



LENS DIAMETER

3 IN
76 MM



LUMINOUS INTENSITY DISTRIBUTION DIAGRAM

660 LUMENS

IN STORE DISPLAY



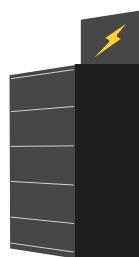
GIFT BOX



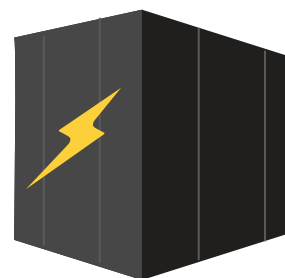
6 PACK BOX



12 PACK BOX



END CAP



PALLET