

## CARE AND MAINTENANCE

To remove dust from your fabric sofa. Brush delicately using a brush with soft bristles or use a vacuum cleaner at a medium power output setting using the most suitable accessory supplied with the cleaner and taking care not to rub the accessory directly on the covering. To maintain the aesthetic appearance it is advisable to treat each stain before it is absorbent excessively. This will avoid prolonged or abrasive treatments being required.

## NOTICE

- \*Please make sure that you have all parts indicated before you begin assembly on this item.
- \* This item should be assembly on a soft surface to prevent scratching/dirty the surface during assembly.
- \* This item may require periodic tightening.

### Part List

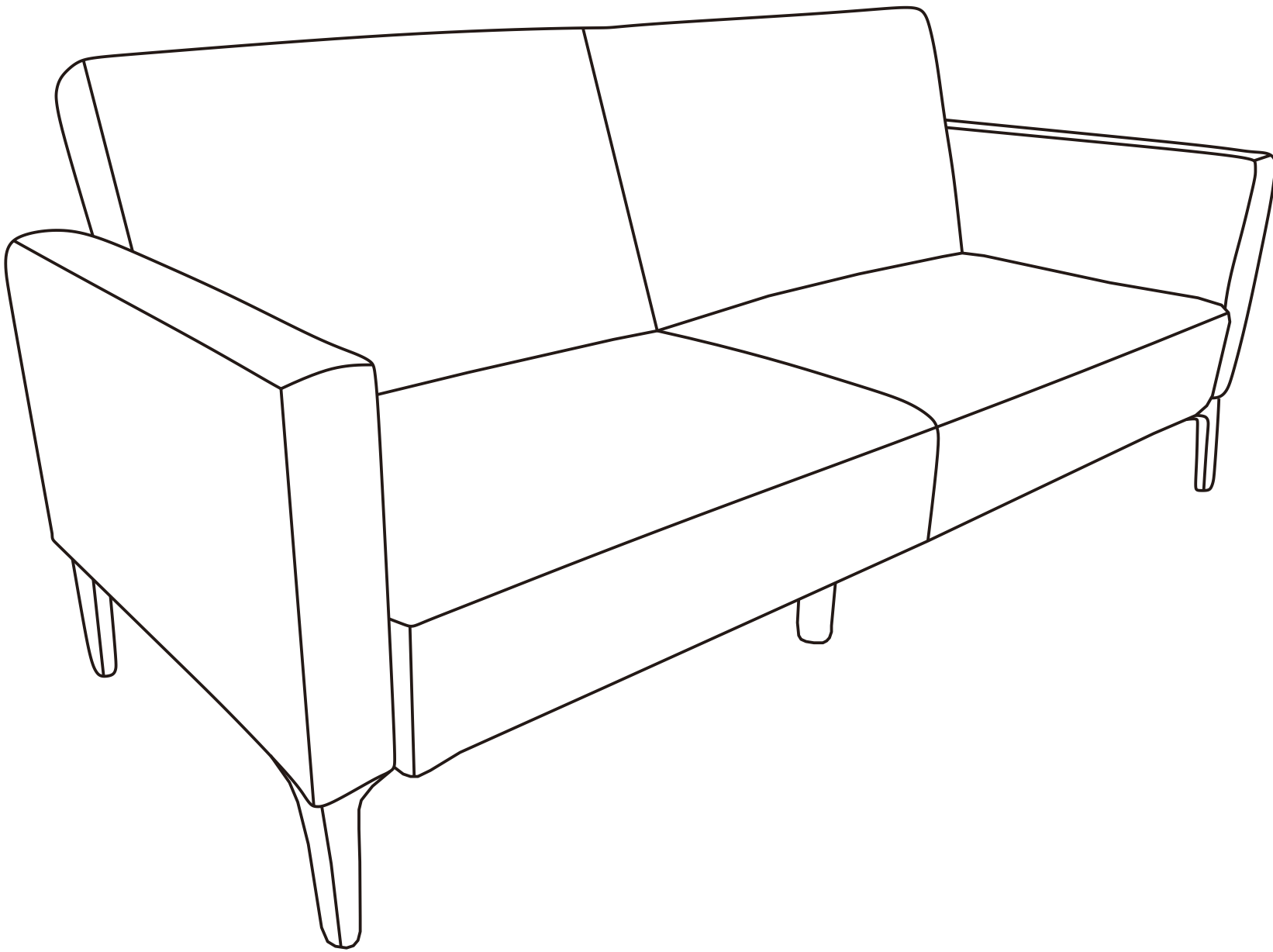
PIECE	DESCRIPTION	PICTURE	QUANTITY
A	Sofabed		1X
B	Armrest left		1X
C	Armrest right		1X
D	Leg		4X
E	Middle support leg		2X
Hw1	Thread Stud 8x1.25x90mm		8X
Hw2	Socket Screws 6x1.27x25.4mm		8X
Hw3	Socket Screws 6x1.27x12.7mm		8X
Hw4	Flat Washer 8x22mm		8X
Hw5	Flat Washer 6x20mm		8X
Hw6	Allen key		1X
Hw7	Hex Nut 8x13mm		8X
Hw8	Open end wrench		1X



### ITEM NO.:LVS2005

Item Dimension:79.1"W×33.1"D×32.7"H

Item Weight Capacities:550LBS

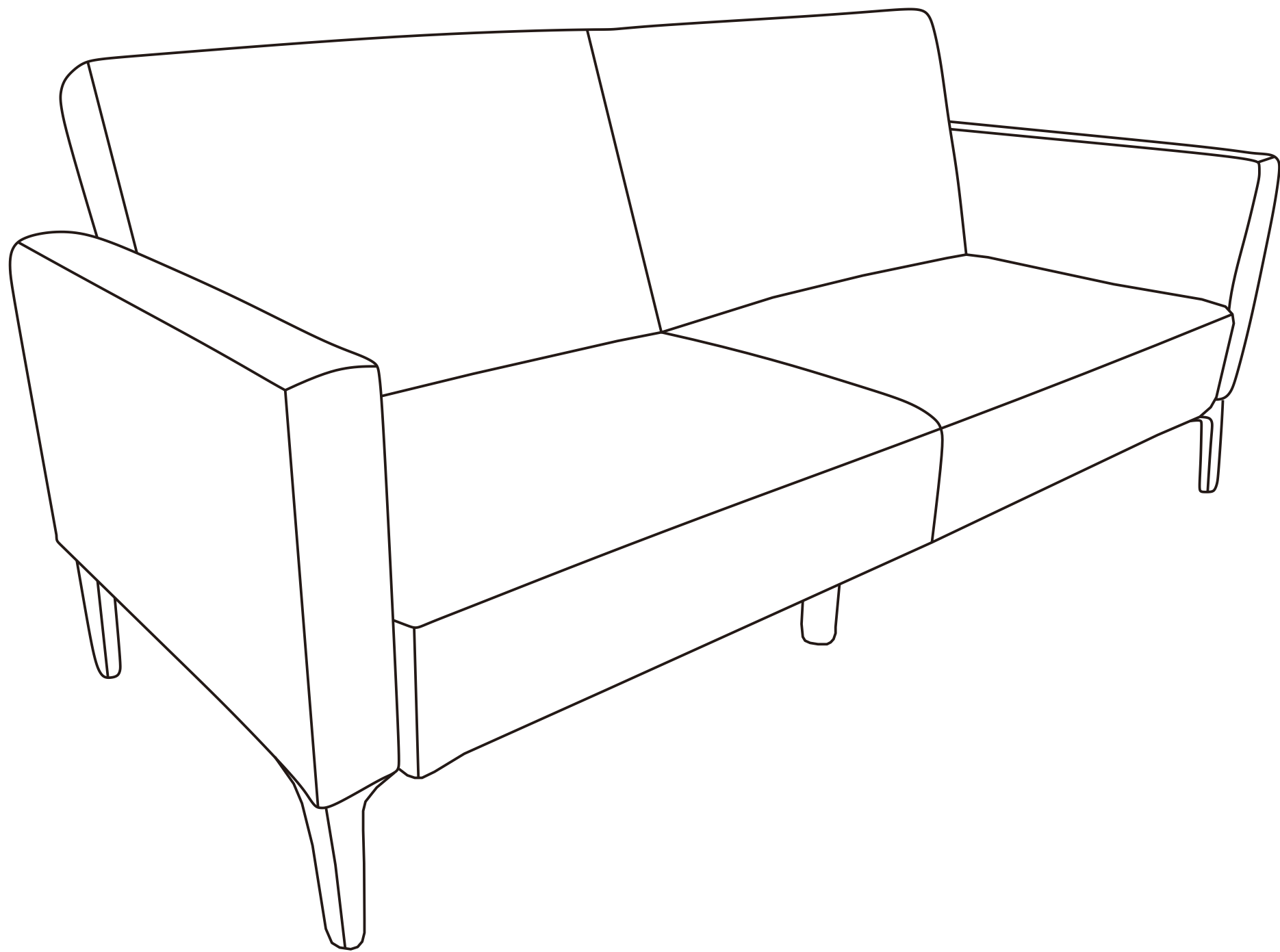


# PREPARATION

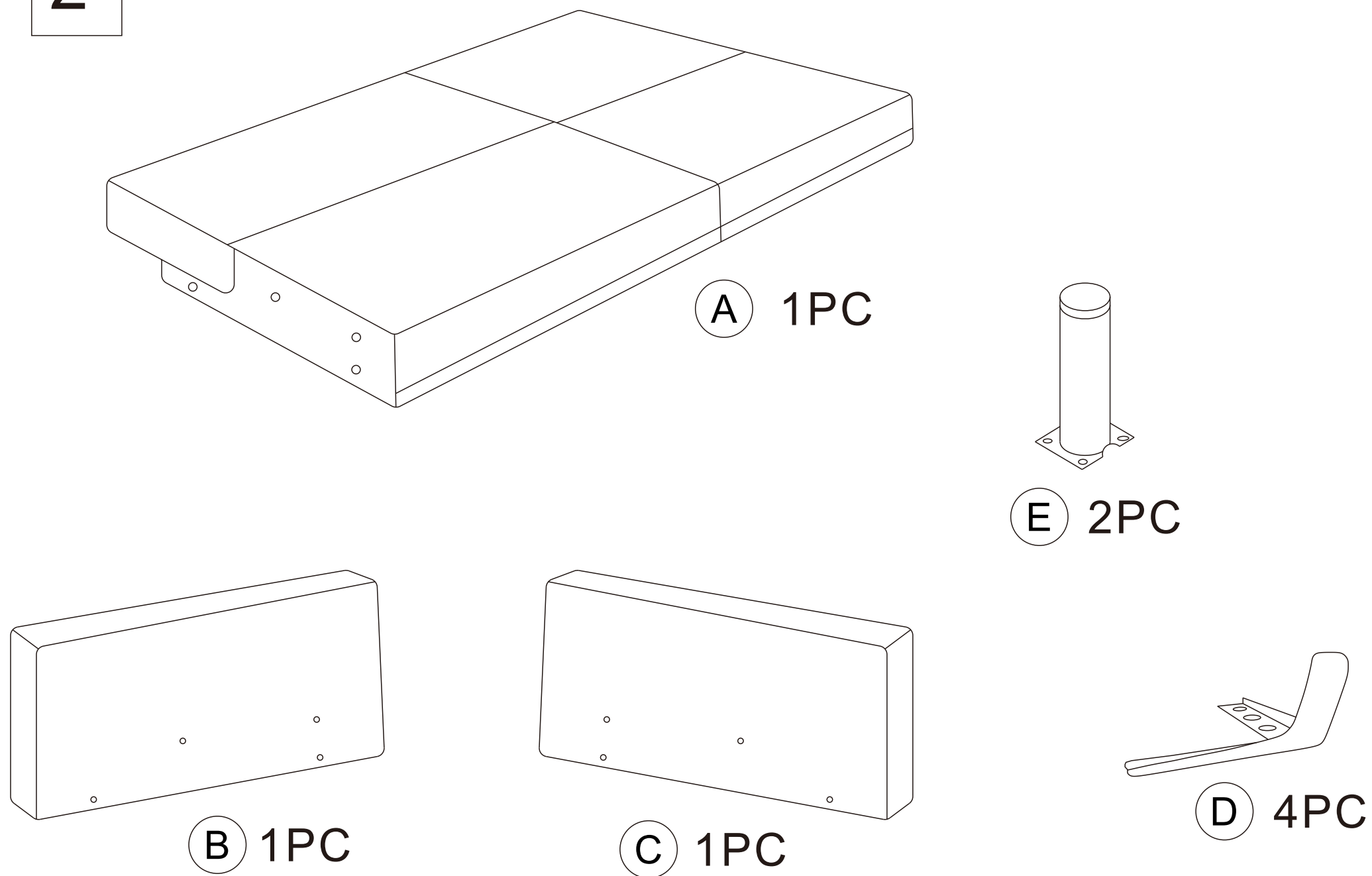
Before beginning assembly of product, make sure all parts are present. Compare parts with package contents list. If any part is missing or damaged, do not attempt to assemble the product.

Estimated Assembly Time: 15 minutes.

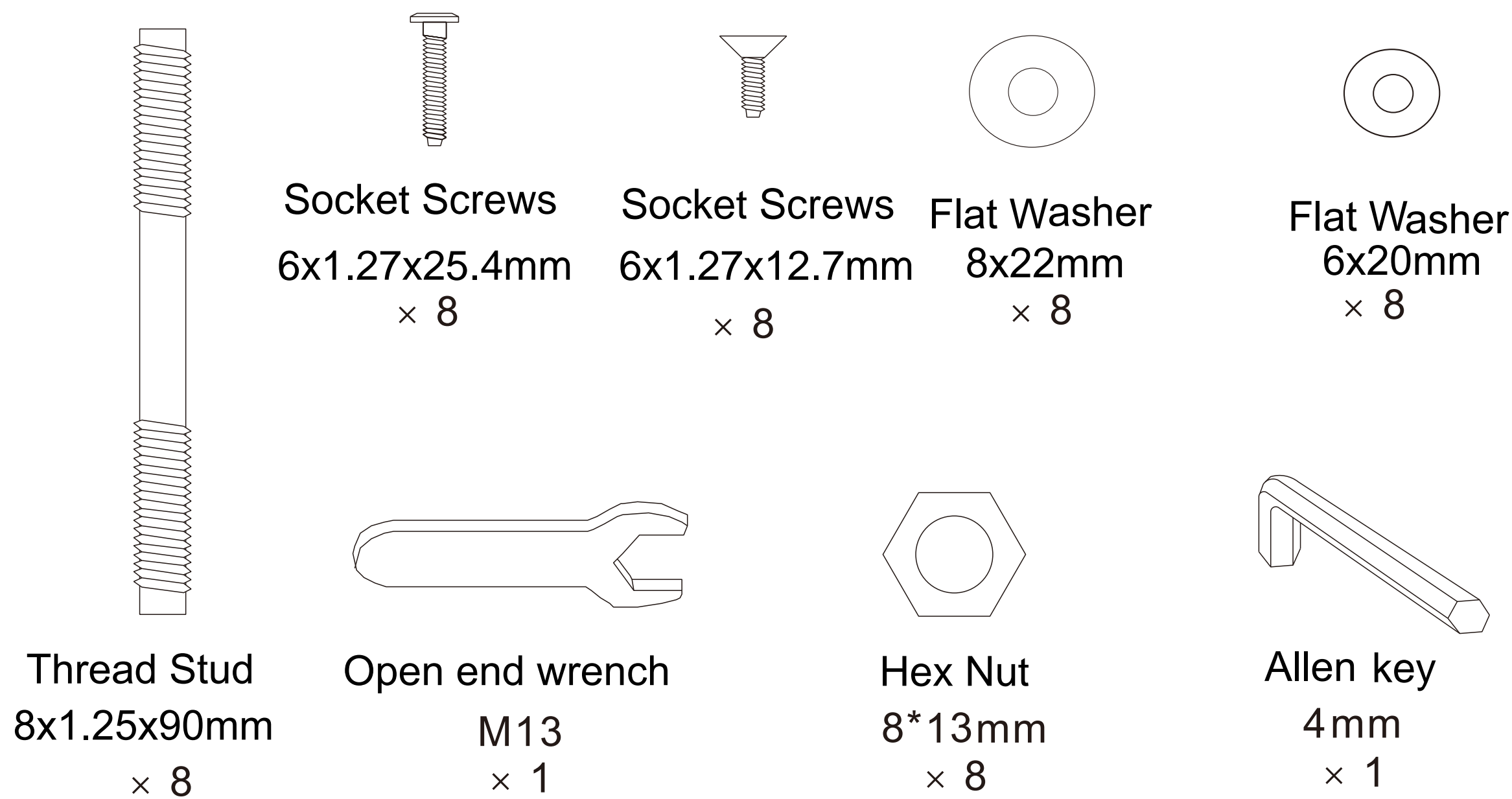
1



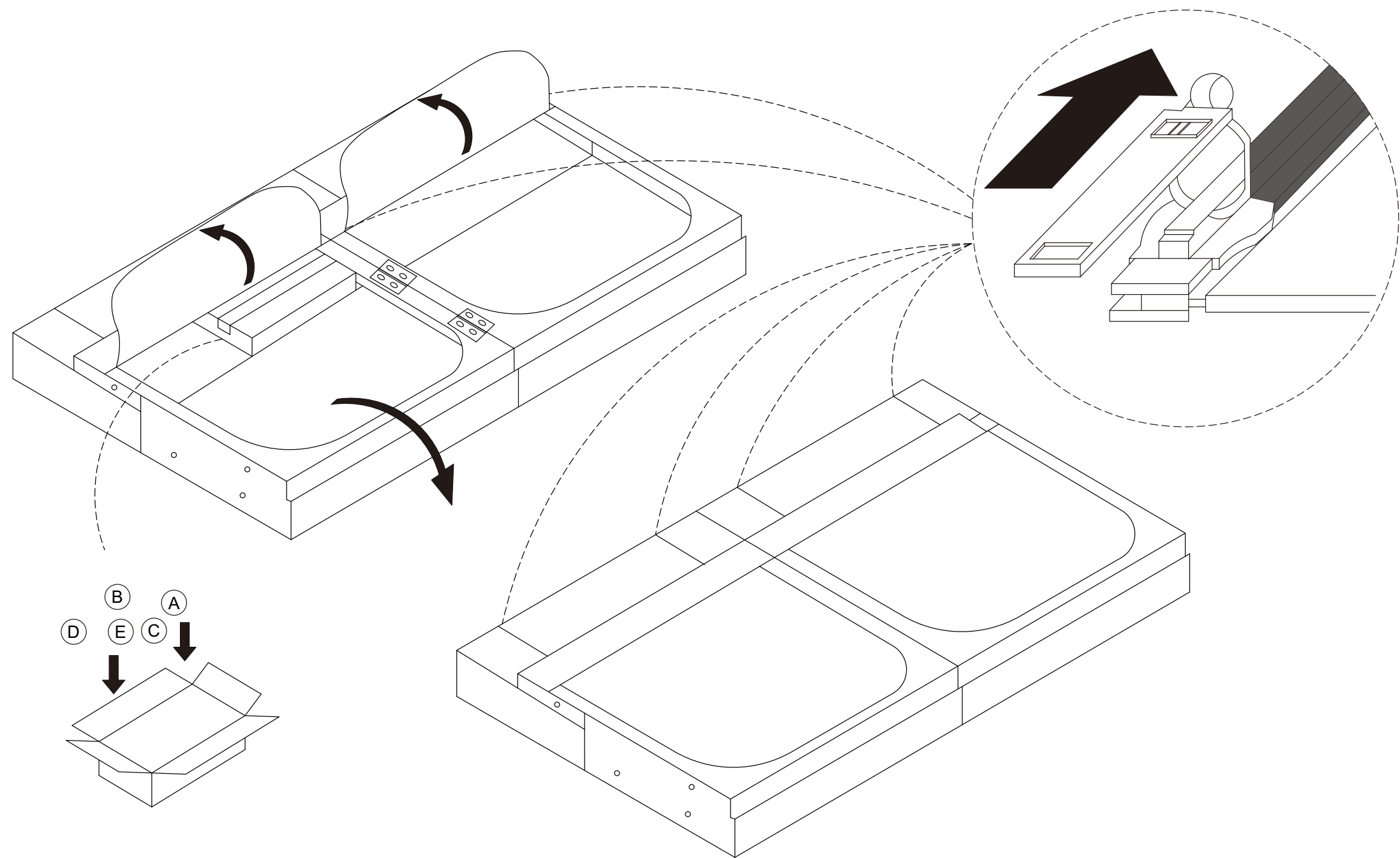
2



3



4





# PREPARATION

Before beginning assembly of product, make sure all parts are present. Compare parts with package contents list. If any part is missing or damaged, do not attempt to assemble the product.

Estimated Assembly Time: 15 minutes.

