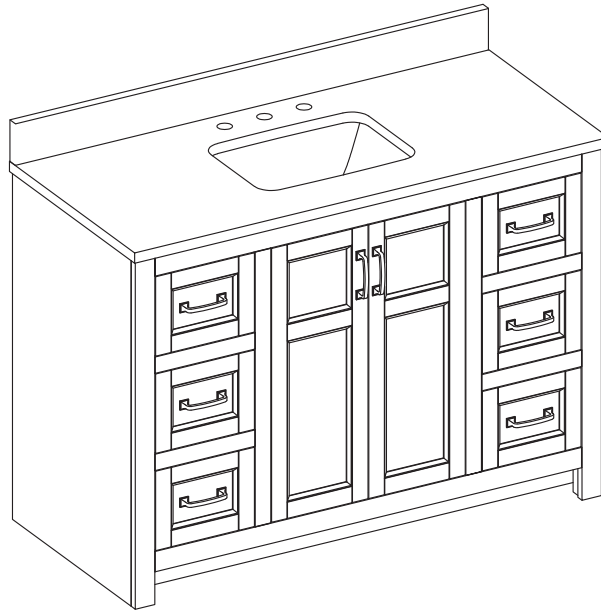


welcoming • sophisticated • inspiring



MODEL NUMBER	DESCRIPTION
1954VA-48-278-900-UM	AR 48-IN WATSON WASHED NATURAL OAK VANITY W/CARRARA MARBLE TOP
1954VA-48-278-901-UM	AR 48-IN WATSON WASHED NATURAL OAK VANITY W/ENGINEERED WHITE TOP
1954VA-48-278-925-UM	AR 48-IN WATSON WASHED NATURAL OAK VANITY W/ENGINEERED CARRARA TOP
1954VA-48-278-926-UM	AR 48-IN WATSON WASHED NATURAL OAK VANITY W/ENGINEERED CALACATTA TOP
1954VA-48-279-900-UM	AR 48-IN WATSON SANDSTORM OAK VANITY W/CARRARA MARBLE TOP
1954VA-48-279-901-UM	AR 48-IN WATSON SANDSTORM OAK VANITY W/ENGINEERED WHITE TOP
1954VA-48-279-925-UM	AR 48-IN WATSON SANDSTORM OAK VANITY W/ENGINEERED CARRARA TOP
1954VA-48-279-926-UM	AR 48-IN WATSON SANDSTORM OAK VANITY W/ENGINEERED CALACATTA TOP
1954VA-48-291-900-UM	AR 48-IN WATSON PEBBLE OAK VANITY W/CARRARA MARBLE TOP
1954VA-48-291-901-UM	AR 48-IN WATSON PEBBLE OAK VANITY W/ENGINEERED WHITE TOP
1954VA-48-291-925-UM	AR 48-IN WATSON PEBBLE OAK VANITY W/ENGINEERED CARRARA TOP
1954VA-48-291-926-UM	AR 48-IN WATSON PEBBLE OAK VANITY W/ENGINEERED CALACATTA TOP

## 48-IN VANITY WITH TOP

ITEM #4136393; 4136394; 4136395; 4136396; 4136397; 4136398; 4136399; 4136400; 4136401; 4136402;  
4136403; 4136404

MODEL #1954VA-48-278-900-UM; 1954VA-48-278-901-UM; 1954VA-48-278-925-UM; 1954VA-48-278-926-UM;  
1954VA-48-279-900-UM; 1954VA-48-279-901-UM; 1954VA-48-279-925-UM; 1954VA-48-279-926-UM;  
1954VA-48-291-900-UM; 1954VA-48-291-901-UM; 1954VA-48-291-925-UM; 1954VA-48-291-926-UM

### ATTACH YOUR RECEIPT HERE

Serial Number \_\_\_\_\_ Purchase Date \_\_\_\_\_

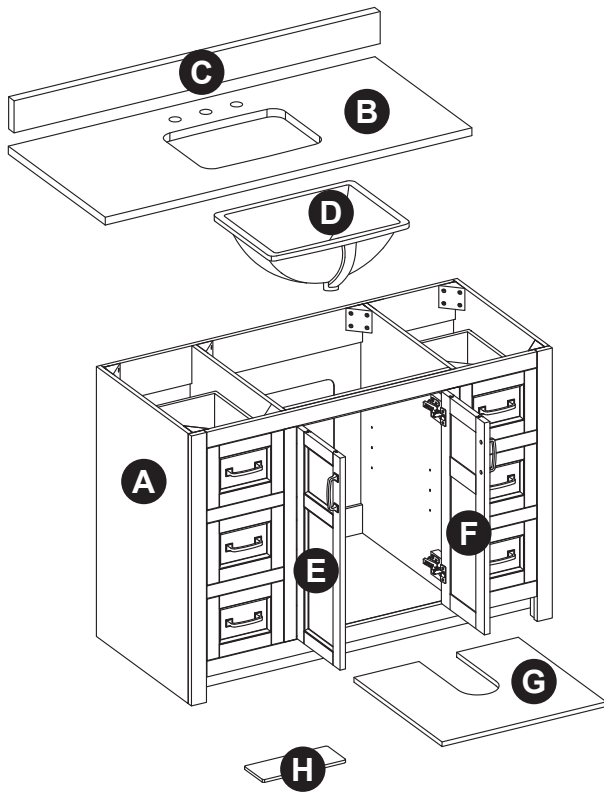
**Questions, problems, missing parts?** Before returning to your retailer, call our customer service department at 866-439-9800, 8 a.m. - 8 p.m., EST, Monday - Sunday.

## TABLE OF CONTENTS

---


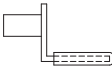


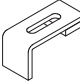



Package Contents.....	3
Hardware Contents.....	3
Safety Instructions.....	3
Preparation.....	4
Assembly or Installation Instructions.....	4
Care and Maintenance.....	11
Warranty.....	11
Replacement Parts List.....	12

## PACKAGE CONTENTS (Undermount Sink)



PART	DESCRIPTION	QUANTITY	CARTON
A	Vanity	1	Box 2 of 3
B	Top	1	Box 1 of 3
C	Backsplash	1	
D	Sink	1	Box 3 of 3
E	Left Door (preassembled to vanity (A))	1	Box 2 of 3
F	Right Door (preassembled to vanity (A))	1	
G	Shelf	1	
H	Floor Plumbing Cutout Lid	1	

## HARDWARE CONTENTS (NOT SHOWN ACTUAL SIZE)

AA	BB	CC	GG	HH	II	JJ	KK
							
Touch Up Pen Qty. 1	Shelf Pin Qty. 4	Handle (2 Options) Matte Black (Qty. 8) Brushed Nickel (Qty. 8)	Bolt Qty. 4	Sink Bracket Qty. 4	Nut Qty. 4	Lock Washer Qty. 4	Wrench Qty. 1

## SAFETY INSTRUCTIONS

Please read and understand this entire manual before attempting to assemble, operate or install the product.

### WARNING

- There are several assembly steps, including unpacking, that require two adults.

### CAUTION

- Follow these instructions closely, take your time, and use care while assembling this vanity.

**KEEP THESE INSTRUCTIONS FOR FUTURE REFERENCE.**

## PREPARATION

Before beginning assembly of product, make sure all parts are present. Compare parts with package contents list and hardware contents list. If any part is missing or damaged, do not attempt to assemble the product.

**Estimated Installation Time:** 45 minutes (24 hours for silicone caulk to dry).

Tools Required for Installation (not included): Phillips screwdriver, utility knife or scissors, silicone caulk, power drill with drill bit, measuring tape, level

## INSTALLATION INSTRUCTIONS (Undermount Sink)

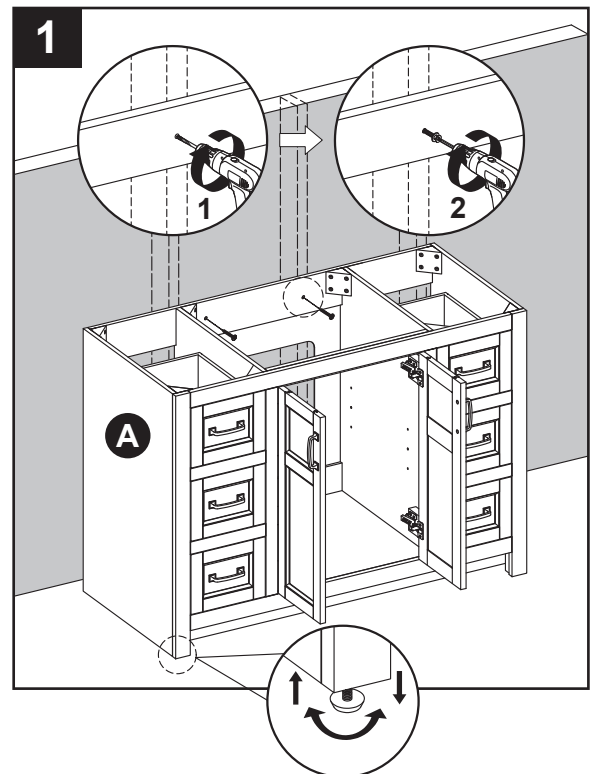
**Note:** Clean area where the vanity (A) will be permanently located prior to beginning installation, ensuring the vanity (A) will not interfere with any water supply and drain lines once mounted.

1. With two people, carefully place vanity (A) against the wall in its final location. While holding the vanity base firmly against the wall, use the pre-assembled levelers on the bottom of each leg of the vanity (A) to level the item. Twisting the levelers counterclockwise will raise the height of the vanity (A), and twisting them clockwise will lower the vanity.

Once the vanity is in place, against the wall, and level from front to back and side to side, drill a hole through the vanity mounting area and into the wall studs (as illustrated in diagram 1). Using appropriate mounting hardware (not included), secure the vanity (A) to a wall stud. If possible, secure the vanity (A) to two wall studs for increased stability.

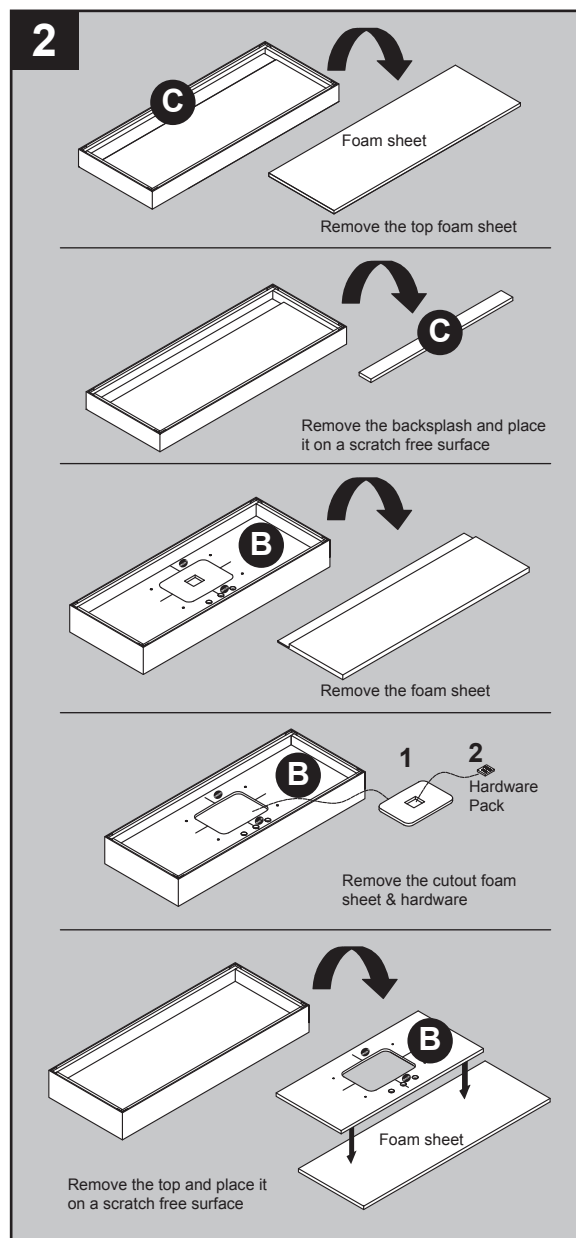
### **WARNING**

Vanity (A) **MUST** be secured to wall.



## INSTALLATION INSTRUCTIONS (Undermount Sink)

2. Take out the top (B) and backsplash (C) according to the steps indicated by the drawings on the right, and place them face down onto a scratch free surface such as a foam sheet that came in the packaging.

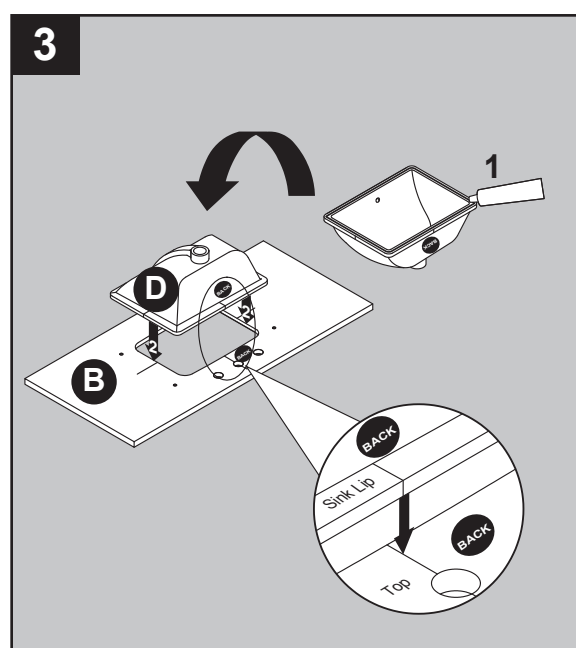


3. Apply silicone caulk (not included) to the top edge of sink (D). With the help of another adult, lower the sink onto the back side of the stone top.

**Make sure the sink over-flow hole is facing the front of stone top.**

Be sure to align the sink well with the stone top cut out allowing for equal stone overhang on the front, back and sides of the ceramic sink (D).

**Note:** To install the sink onto the top correctly, ensure that the two "BACK" stamps on the sink and the top are aligned on the same sides. Use the guide lines marked on the sink and bottom side of stone top to assist with sink location.

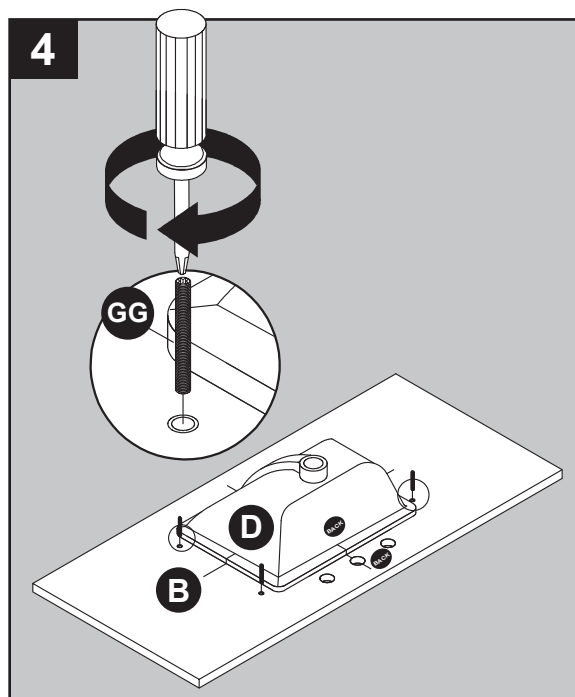


## INSTALLATION INSTRUCTIONS (Undermount Sink)

4. Screw bolts (GG) into the threaded holes of stone top (B).

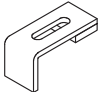
### Hardware Used


**GG** Bolt  x 4





5. Lower the sink brackets (HH) over the bolts (GG) and allow to rest on the sink lip. Adjust location of bracket to firmly grasp sink lip. Lower lock washers (JJ) over bolts (GG) and secure with nuts (II). Hand tighten nuts (II) with included wrench (KK). **DO NOT OVER TIGHTEN!**  
 Tip: Check that the sink placement is well centered front to back and side to side of the stone top cut out before allowing the silicone caulk to dry. If the sink is not centered well unscrew sink clamps, re-adjust the sink position and re-tighten the sink brackets.

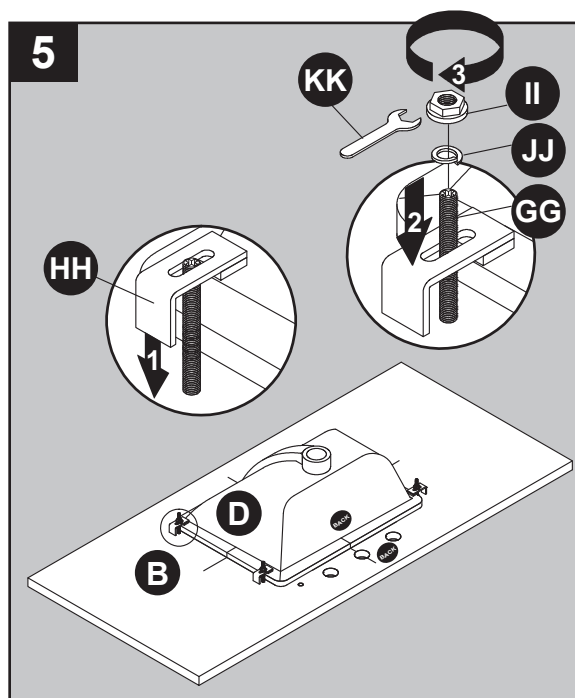
### Hardware Used

**HH** Sink bracket  x 4

**II** Nut  x 4

**JJ** Lock Washer  x 4

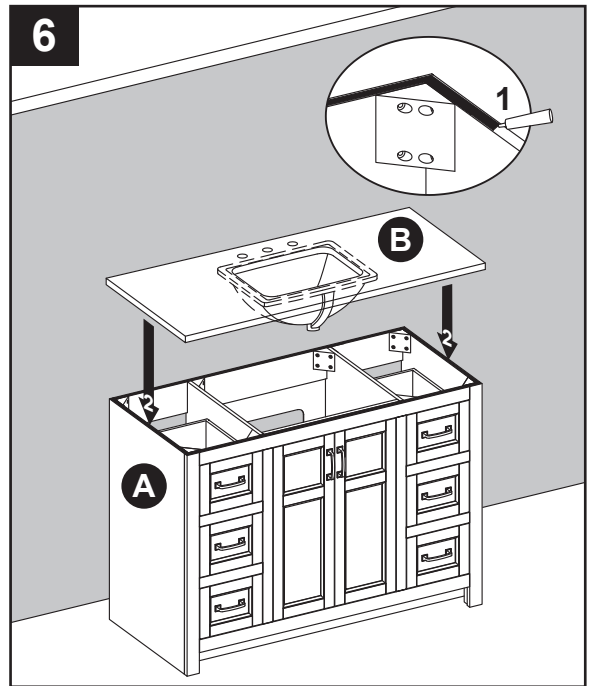
**KK** Wrench  x 1



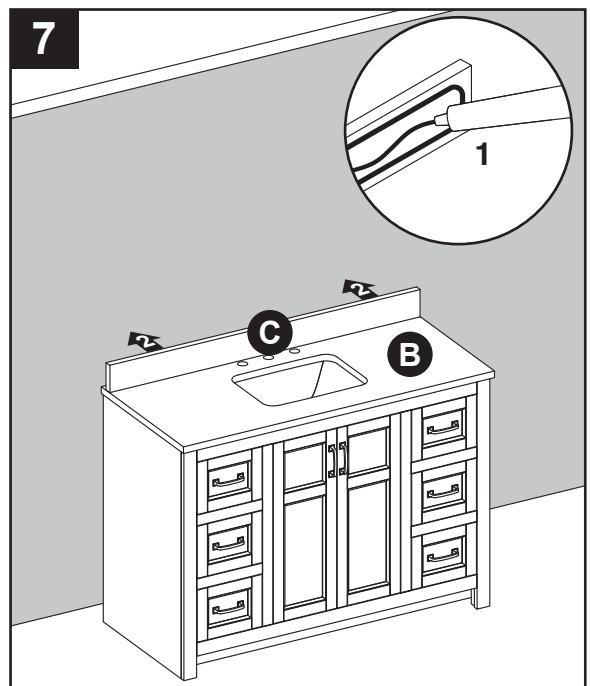
## INSTALLATION INSTRUCTIONS (Undermount Sink)

**Note:** At this stage it may be easier to install the faucet and drain kit (not included) to top (B) per the manufacturer's instructions, before moving on to Step 6.

6. Apply stain free silicone caulk (not included) to the top edge of vanity (A). With the help of another adult, gently lower top (B) onto the vanity (A). Wipe away any excess caulk with a soft cloth, and wait approximately 24 hours for it to dry.



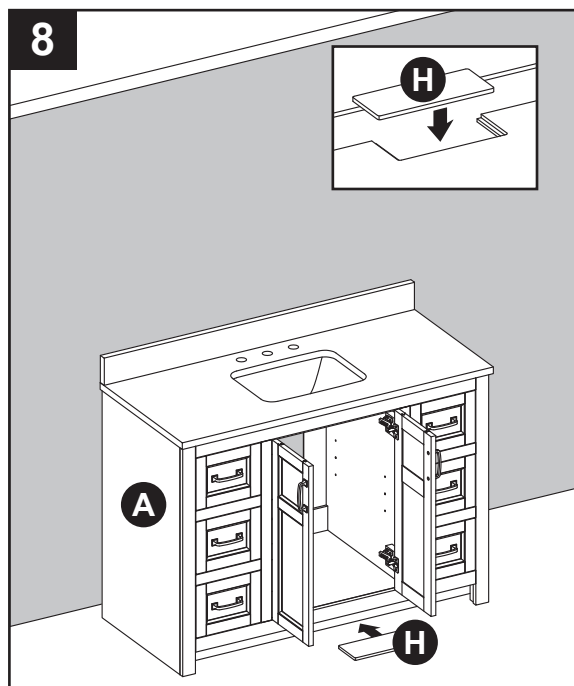
7. Apply silicone caulk (not included) to unpolished side and bottom of backsplash (C). Position backsplash (C) on top (B) and against wall. Clean any excess caulk before allowing to dry.



## INSTALLATION INSTRUCTIONS (Undermount Sink)

8. The back of the vanity is open for accessibility for drain(s) and water line(s) hookup. If your plumbing comes out of the back wall, insert the floor plumbing cutout lid (H), as shown in Illustration 8. This will close the hole and increase your storage space.

If your plumbing comes out of the floor, this hole provides accessibility for drain and water line hookup.

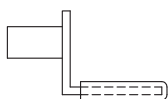


9. Insert shelf pins (BB) at desired height, ensuring they are level. Place shelf (G) on top of shelf pins (BB).

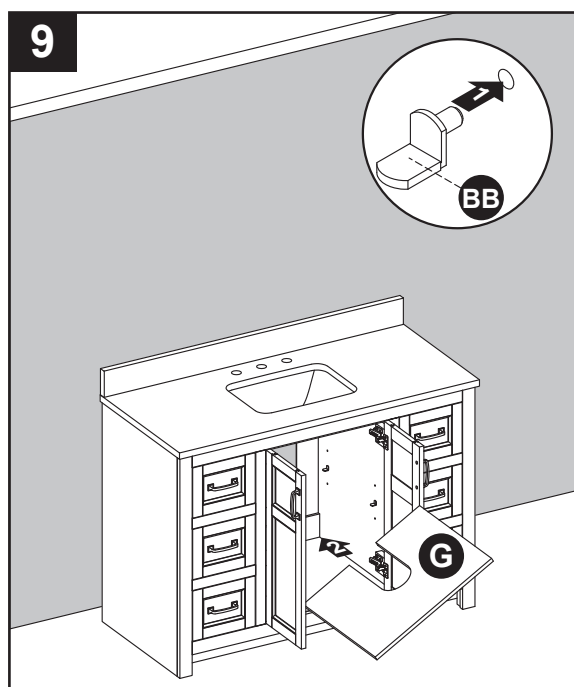
### Hardware Used

BB

Shelf Pin



x 4





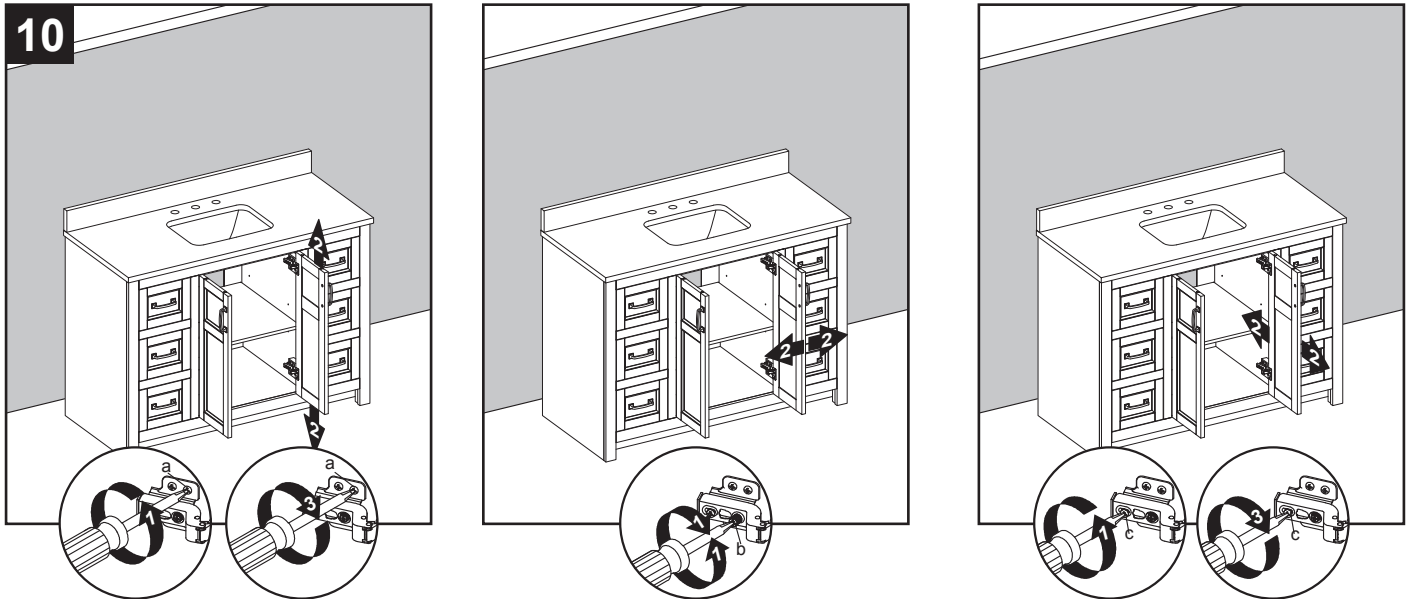
## INSTALLATION INSTRUCTIONS (Undermount Sink)

10. If you need to adjust the doors, do so in the following manner.

To adjust door up or down, loosen screws (a) on both hinges, adjust door, and retighten screws.

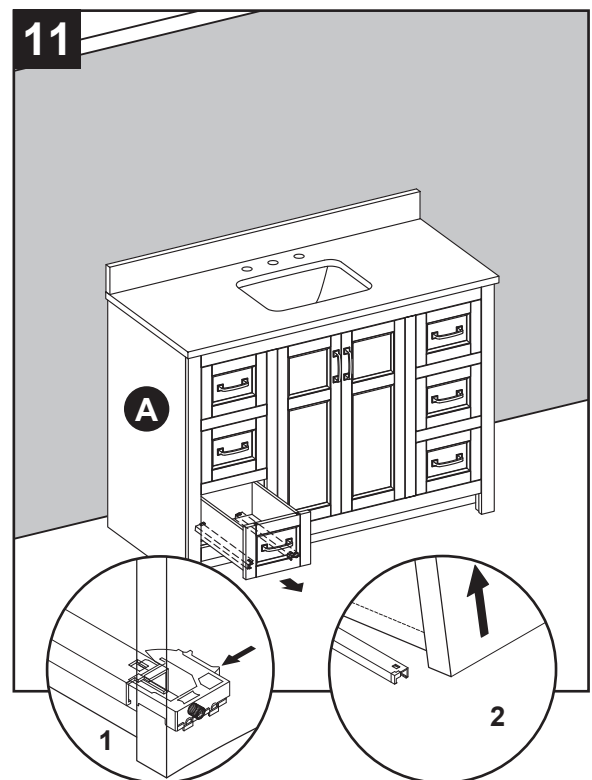
To adjust door left or right, turn screws (b) on both hinges, in and out.

To adjust door in or out, loosen screws (c) on both hinges, adjust door, and retighten screws.



11. To remove drawers preassembled in vanity (A), fully extend drawers. Locate plastic levers on metal glide tracks at left and right sides of drawer box.

To disengage drawer box from glides, push on plastic levers. Then, gently lift drawer up to remove it from vanity (A).



## INSTALLATION INSTRUCTIONS (Undermount Sink)

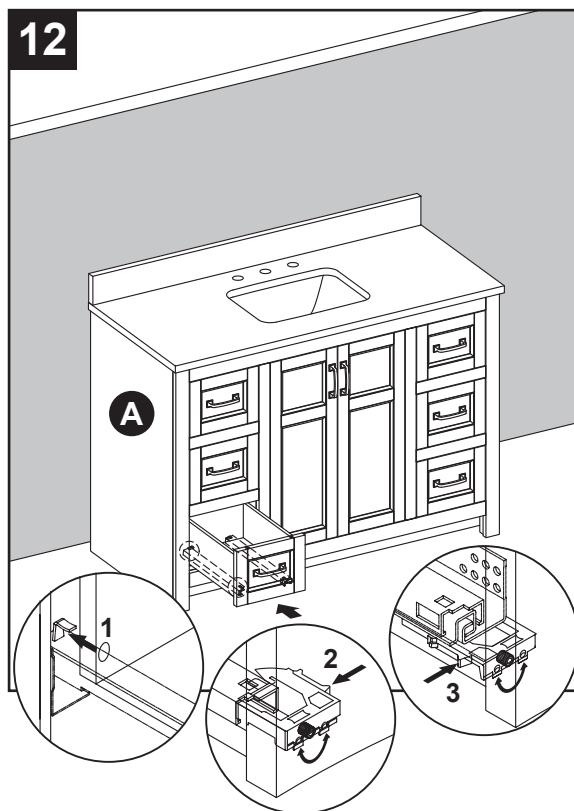
12. To reinstall drawers into vanity (A), fully extend metal glide tracks. Gently lower and slide drawer box into rear glide catch. Next lower drawer box down to completely rest on extended glides. Then, push plastic levers to lock the drawer box in place.

Repeat for remaining drawers.

**Note:** To adjust the drawer box height, spin the adjustment wheel to the left to raise the drawer box or spin the adjustment wheel to the right to lower the drawer box. You can adjust the left and right-side glide heights independently in order to find the drawers best alignment position.

### CAUTION

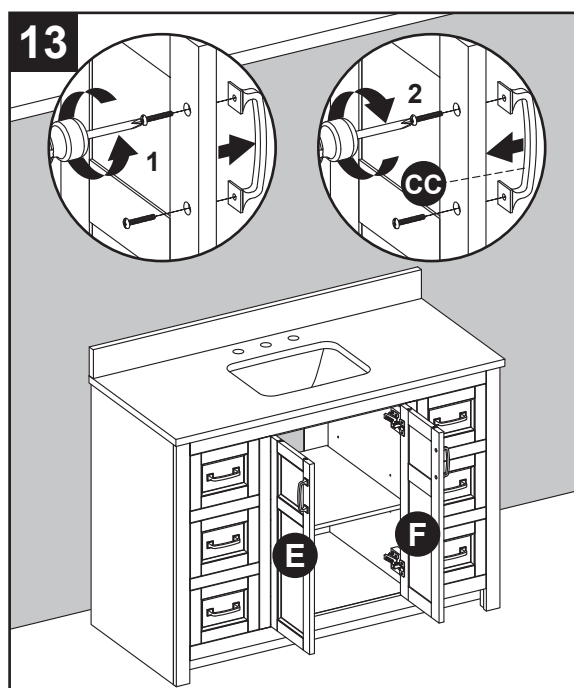
**DO NOT** force drawer or damage to glide may occur. If drawer does not slide in with ease, remove and try again from the start.



**Note:** This vanity base comes with two different door/drawer handle options.

13. One set of handles (CC) are packaged separately in the box. If you would like to switch handles, simply remove the existing handles and attach the other finish, as illustrated in the diagram.

Assembly is now complete. Install desired faucet and drain assemblies (neither included) per the manufacturers' instructions to complete the installation.



### Hardware Used



Handle



x 8

## CARE AND MAINTENANCE

---

- Dust the vanity regularly with a soft, non-lint producing cloth or household dusting product.
- You can clean the vanity with a gentle, non-abrasive household cleaner.
- Make sure to dry the wood immediately with a soft cloth or towel.
- The stone top can be cleaned using standard marble cleaning agents available at your local supplier.
- Tips for using touch-up pen (AA): For scratches, stroke in direction of scratch; for worn areas, stroke in direction of wood grain. Rub off excess colorant promptly with a soft cloth.

### IMPORTANT

- Shade variations and patterns are an inherent characteristic of stone (e.g. granite, marble, engineered stone). Stone tops will vary from product to product. Use caution placing items such as soap or any fragranced material on the stone surface. Use a soap dish, coaster or similar item to protect the surface if placing any soap or fragranced products on the stone.
- If soap or fragranced products come in contact with the stone top, rinse the surface with water and dry using a soft non-abrasive cloth.
- **WARNING:** Must use cleaning agents safe for stone. Check your cleaning agents use restrictions before using on any stone. Damage to the stone may result. Vanity Manufacturer not responsible for damage caused by improper cleaning agents or soaps used. Warranty will not cover damage caused by the use of improper soaps or cleaning agents.
- **DO NOT** use products to clean the stone top that contain acetone, lemon, vinegar or other acids as these may cause damage to the stone surface.
- Periodically reseal the stone top using an appropriate stone sealer available from your local home store. Follow the manufacturer's directions on how to apply.

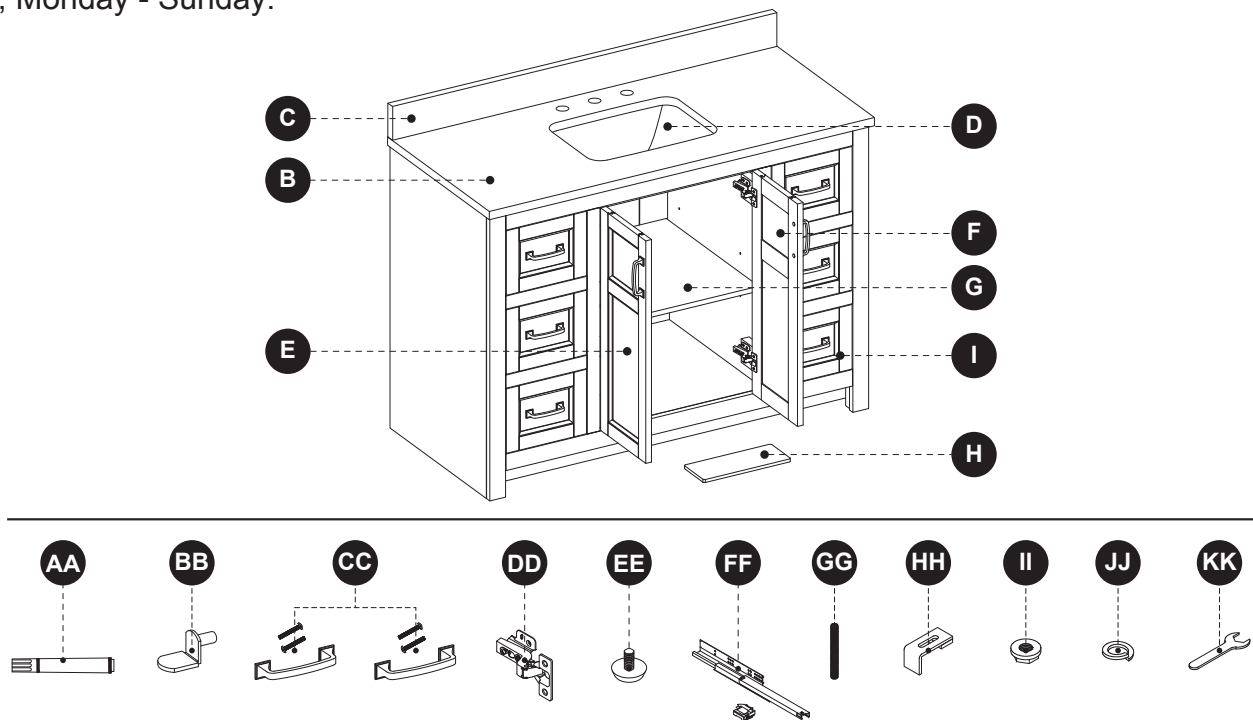
### WARRANTY

---

The manufacturer warrants this item against defects in materials and workmanship for a period of one (1) year from the date of original retail purchase. This warranty applies only to the original purchaser. This warranty does not apply to any damage on the product by accident, misuse, or modified, improper installation or by affixing accessories not produced by the manufacturer. The manufacturer will not be held liable for damages caused from cleaners or soaps that etch or stain the stone top. The manufacturer is not accountable whatsoever for product installation during the warranty period. There is no further expressed warranty. The manufacturer shall not be legally responsible for incidental, consequential or special damages arising at or in connection with product use or performance except as may otherwise be accorded by law. The manufacturer disclaims any and all implied warranties.

## REPLACEMENT PARTS LIST FOR 1954VA-48-278-UM (Undermount Sink)

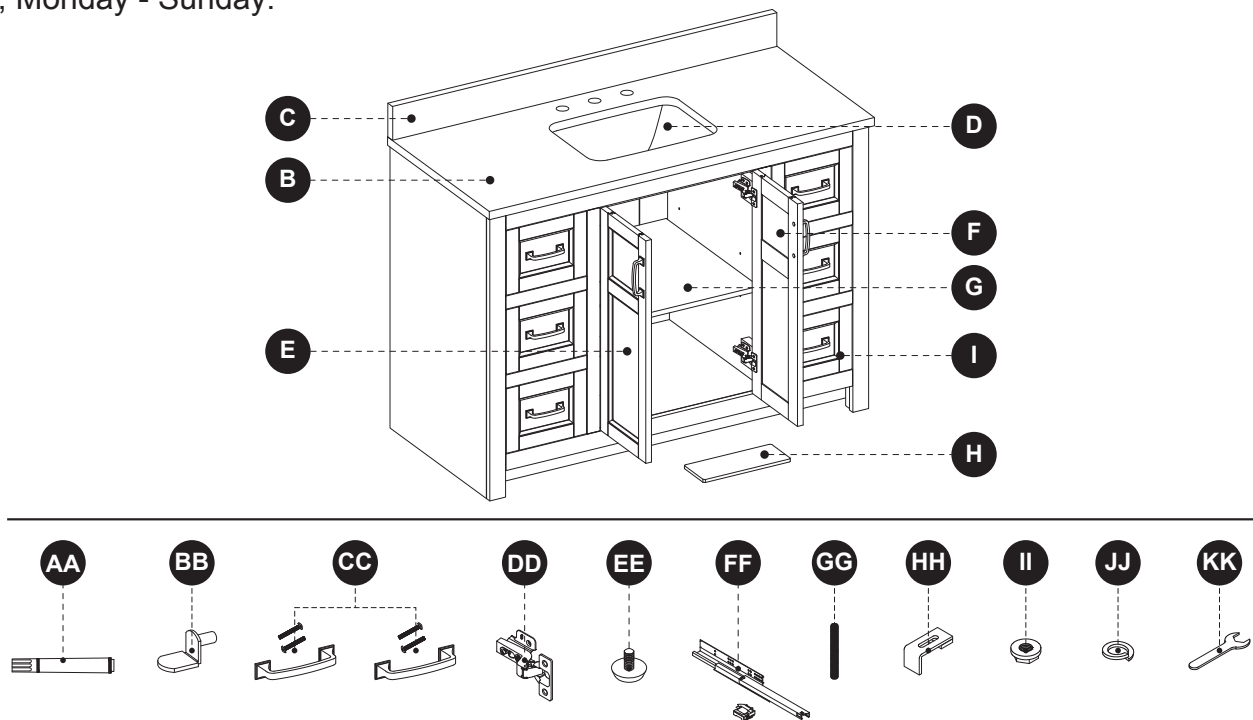
For replacement parts, call our customer service department at 866-439-9800, 8 a.m. - 8 p.m., EST, Monday - Sunday.



PART	DESCRIPTION	PART#
B	Complete Set 48" Carrara Marble Top	2500VT-48-900
	Complete Set 48" Engineered White Top	2500VT-48-901
	Complete Set 48" Engineered Carrara Top	2500VT-48-925
	Complete Set 48" Engineered Calacatta Top	2500VT-48-926
C	48" Carrara Marble Backsplash	PUBS-25-900-48
	48" Engineered White Backsplash	PUBS-25-901-48
	48" Engineered Carrara Backsplash	PUBS-25-925-48
	48" Engineered Calacatta Backsplash	PUBS-25-926-48
D	Sink	PU17-18X14-SQUARE
E	Left Door	1954VA-48-278 DOOR SET
F	Right Door	
G	Shelf	1954VA-48-278-SHELF
H	Floor Plumbing Cutout Lid	278 FP LID
I	Drawer Front	1954VA-278-DRAWER FRONT
AA	Touch-up pen	M-1108
BB	Shelf Pin	B1044
CC	Handle-Matte Black (with screw)	1954VA-MB HANDLE
	Handle-Brushed Nickel (with screw)	1954VA-BN HANDLE
DD	Hinge	C-90-107
EE	Leveler	T-1007
FF	Drawer Glide Set	PUDTC-14X3-HANDLE
GG	Bolt	GTC-SINK CLIPS
HH	Sink Bracket	
II	Nut	
JJ	Lock Washer	
KK	Wrench	

## REPLACEMENT PARTS LIST FOR 1954VA-48-279-UM (Undermount Sink)

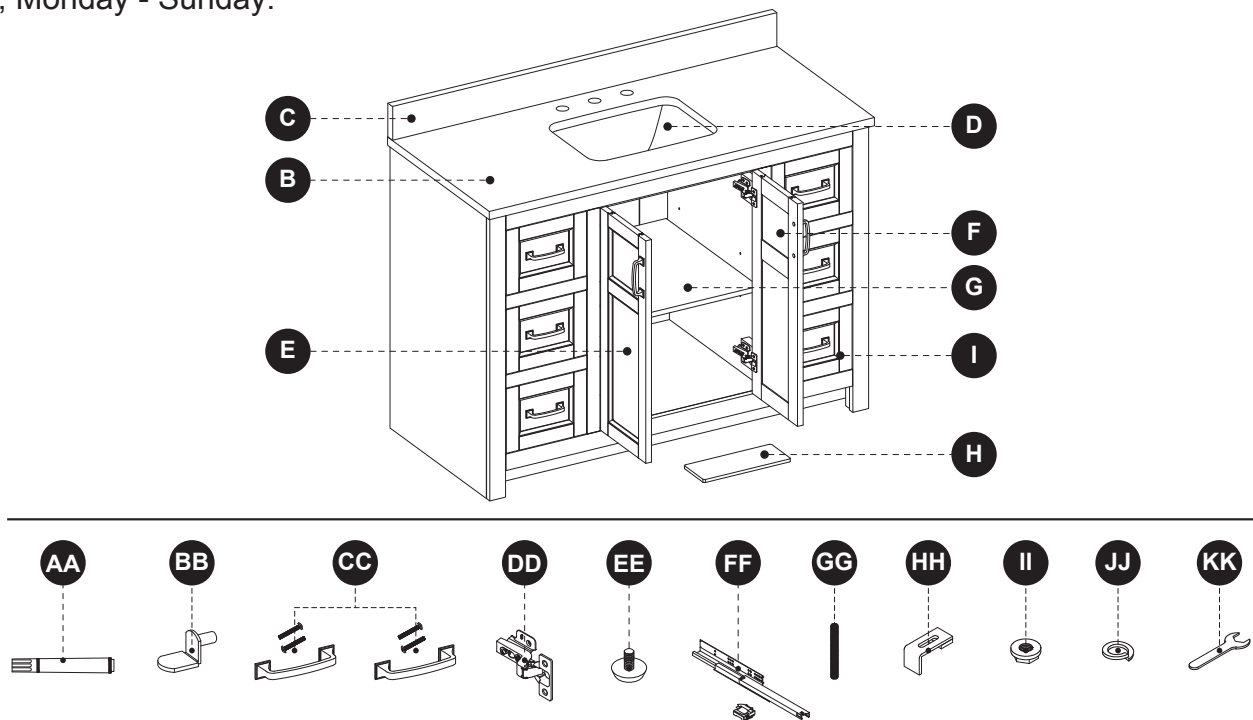
For replacement parts, call our customer service department at 866-439-9800, 8 a.m. - 8 p.m., EST, Monday - Sunday.



PART	DESCRIPTION	PART#
B	Complete Set 48" Carrara Marble Top	2500VT-48-900
	Complete Set 48" Engineered White Top	2500VT-48-901
	Complete Set 48" Engineered Carrara Top	2500VT-48-925
	Complete Set 48" Engineered Calacatta Top	2500VT-48-926
C	48" Carrara Marble Backsplash	PUBS-25-900-48
	48" Engineered White Backsplash	PUBS-25-901-48
	48" Engineered Carrara Backsplash	PUBS-25-925-48
	48" Engineered Calacatta Backsplash	PUBS-25-926-48
D	Sink	PU17-18X14-SQUARE
E	Left Door	1954VA-48-279 DOOR SET
F	Right Door	
G	Shelf	1954VA-48-279-SHELF
H	Floor Plumbing Cutout Lid	279 FP LID
I	Drawer Front	1954VA-279-DRAWER FRONT
AA	Touch-up pen	M-1108
BB	Shelf Pin	B1044
CC	Handle-Matte Black (with screw)	1954VA-MB HANDLE
	Handle-Brushed Nickel (with screw)	1954VA-BN HANDLE
DD	Hinge	C-90-107
EE	Leveler	T-1007
FF	Drawer Glide Set	PUDTC-14X3-HANDLE
GG	Bolt	GTC-SINK CLIPS
HH	Sink Bracket	
II	Nut	
JJ	Lock Washer	
KK	Wrench	

## REPLACEMENT PARTS LIST FOR 1954VA-48-291-UM (Undermount Sink)

For replacement parts, call our customer service department at 866-439-9800, 8 a.m. - 8 p.m., EST, Monday - Sunday.



PART	DESCRIPTION	PART#
B	Complete Set 48" Carrara Marble Top	2500VT-48-900
	Complete Set 48" Engineered White Top	2500VT-48-901
	Complete Set 48" Engineered Carrara Top	2500VT-48-925
	Complete Set 48" Engineered Calacatta Top	2500VT-48-926
C	48" Carrara Marble Backsplash	PUBS-25-900-48
	48" Engineered White Backsplash	PUBS-25-901-48
	48" Engineered Carrara Backsplash	PUBS-25-925-48
	48" Engineered Calacatta Backsplash	PUBS-25-926-48
D	Sink	PU17-18X14-SQUARE
E	Left Door	1954VA-48-291 DOOR SET
F	Right Door	
G	Shelf	1954VA-48-291-SHELF
H	Floor Plumbing Cutout Lid	291 FP LID
I	Drawer Front	1954VA-291-DRAWER FRONT
AA	Touch-up pen	OF-0120R
BB	Shelf Pin	B1044
CC	Handle-Matte Black (with screw)	1954VA-MB HANDLE
	Handle-Brushed Nickel (with screw)	1954VA-BN HANDLE
DD	Hinge	C-90-107
EE	Leveler	T-1007
FF	Drawer Glide Set	PUDTC-14X3-HANDLE
GG	Bolt	GTC-SINK CLIPS
HH	Sink Bracket	
II	Nut	
JJ	Lock Washer	
KK	Wrench	