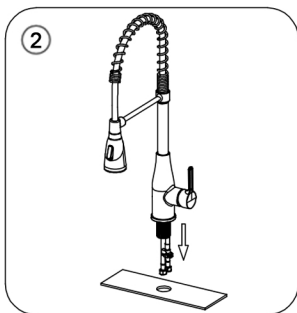
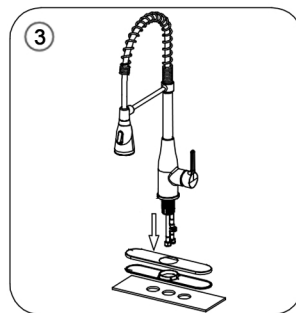


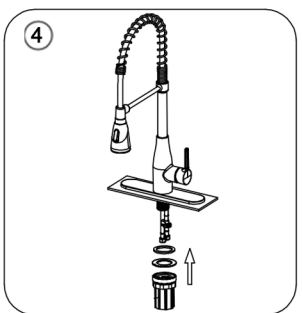
1. Remove the quick nut, metal washer and rubber washer from the faucet shank.



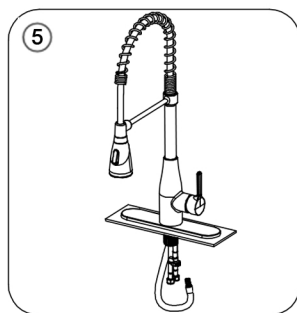
2. For single hole installation insert the hot and cold supply lines and shank through the hole in the countertop.



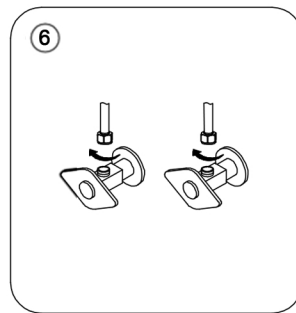
3. For a 3-hole installation insert the base plate panel into the base shank. Insert the hot and cold supply lines, spray hose and shank through the hole in the countertop.



4. Install the rubber washer, metal washer, and quick nut onto the faucet shank in that order underneath the countertop. Tighten down the quick nuts ensuring the faucet is in the proper position.

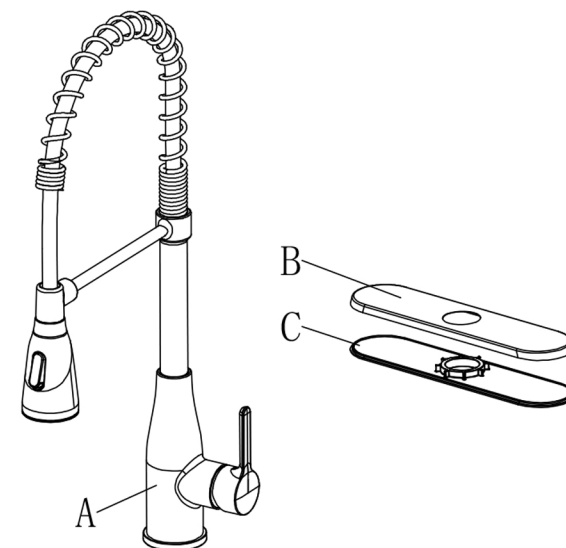


5. Release the lid on the weight block (D), put it into the drawing tube (6.1) for the appropriate position, tighten the weight block (D) and fix it in the drawing tube (6.1), and then push the drawing tube (6.1) into the hole of the quick connection (6.2).



6. Connect the open ends of the hot and cold supply lines to the shut off valves. Ensure the faucet is in the off position and turn on shut off valves. Check for leaks.

LED Magnetic Spring Kitchen Faucet



Part List

Number	Name	Quantity
A	Faucet	1
B	Panel	1
C	Baseplate	1