

297x105mm

Front

Link2Home

Instruction manual
Auto Pop Up Socket with
Induction Charger Black Color



EM-PU-600E

CUTOUT AND MOUNTING STEPS:

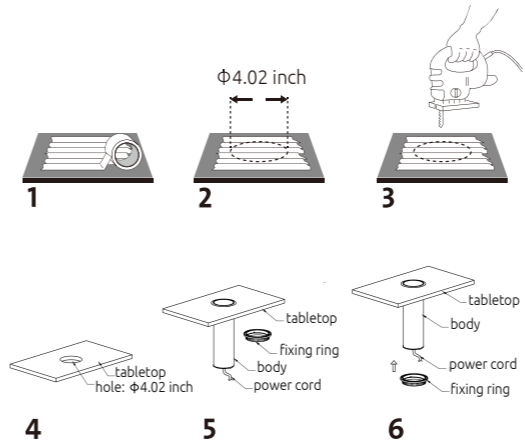
- Select the desired location of a countertop or desktop, if used on a countertop need to be at least 10" from stove top or other heating sources.
- The selected location must be at least 0.79 inch (20mm) away from the edge of the countertop or similar surface.
- The mounting surface must be between 0.39 inch (10mm) and 1.77 inch (45mm) thick.

Installation Instructions:

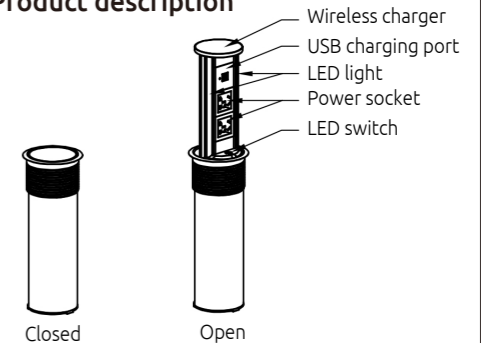
1. Lay blue painter's tape on the surface on the wood.
2. Mark the position of the hole and drill through the tape into the wood. Painter's tape is a better choice than all-purpose tan tape because it adheres less strongly and is easier to pull off.
3. Cut hole in surface of countertop of $\Phi 4.02$ inch
4. Feed power cord through the hole through countertop first, followed by the main unit, pushing down until gasket rests on countertop.
5. Feed power cord through locking flange and thread flange

counterclockwise until locked in place against underside of countertop.

6. To open pop up feature, press firmly on cover. Unit will deploy upward approximately 1" initially, then pull cover upward until unit locks into place. To close device, push the plastic locking tab and push down on cover until unit locks.



Product description



Specification

S.N.	Name	Details
1	Wireless charger	output: 9V 1.1A, LOW max(or customize)
2	USB charger	output: DC 5V 3.4A(two ports together), 17W(max)
3	LED light	power: 1.2W(max), dimmable, color temp 2500K
4	Power socket	as per type of power socket
5	LED switch	touch switch, adjust the light brightness by pressing and holding

Back

Use specifications

Stock and use temperature: 23°F (-5°C) to 104°F (40°C)

Cautions

1. Make sure there will be an empty space, height more than 200mm. and make sure power cord being in a loose status
2. Avoid foreign object ingress, including but not limited to needle, combustible substance and liquid, which will affect its function
3. Keep it away from humid, dusty etc enviroment
4. Cut the power supply before you install, maintain or take it apart
5. Stop using it once you found it abnormal
6. Please read this manual carefully before assembly and save it for reference;
7. Only for indoor use;
8. Please keep the product in a dry environment, and environment temperature cannot exceed 95°F (35°C)

9. Device connected to AC socket must have ground connection.
10. If the rating of the appliance (voltage, power, temperature, frequency etc.) exceeds the below SPECIFICATION, it may damage the appliance.
11. In case of failure of the product, do not use it again or open it for repair without permission.
12. This product cannot be treated as unclassified municipal waste and should be recycled by a separate collection facility.
13. Please contact the local government for information about food chain and damage your life and health.

LINK2HOME

1 YEAR LIMITED WARRANTY

IMPORTANT: Proof of Purchase is required to obtain warranty service

Paragon Group USA Inc. warrants to the original owner that our products will be free from defect in workmanship and material for a period of ONE YEAR from the date of purchase. Should any unit(s) prove to be defective during this period, Paragon Group USA Inc. will be responsible for replacement of the defective unit(s) only. Paragon Group USA Inc. is not responsible for labor charges or any incidental or consequential expenses.

Not Covered – Batteries are not covered by this warranty. Repair service, adjustment and calibration due to misuse, abuse or negligence are not covered by this warranty.

Unauthorized service or modification to this product or of any furnished components will void this warranty in its entirety.

This warranty does not include reimbursement for inconvenience, installation, set-up time, loss of use, postage, unauthorized

service, or other products used in conjunction with Link2Home products.

For warranty service, please contact Paragon Group USA Inc.

Customer Service by Phone: 1-888-783-6082 or

e-mail: info@paragongroupusa.com.

This warranty gives you specific legal rights, and you may also have other rights which vary from state to state.

Paragon Group USA Inc.

Link2Home Product Division

Englewood, NJ 07631

USA

link2home.com

⚠ WARNING: Cancer and Reproductive Harm - www.P65Warnings.ca.gov.