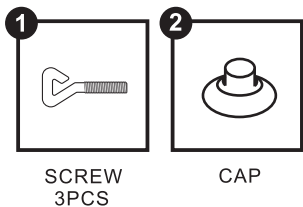
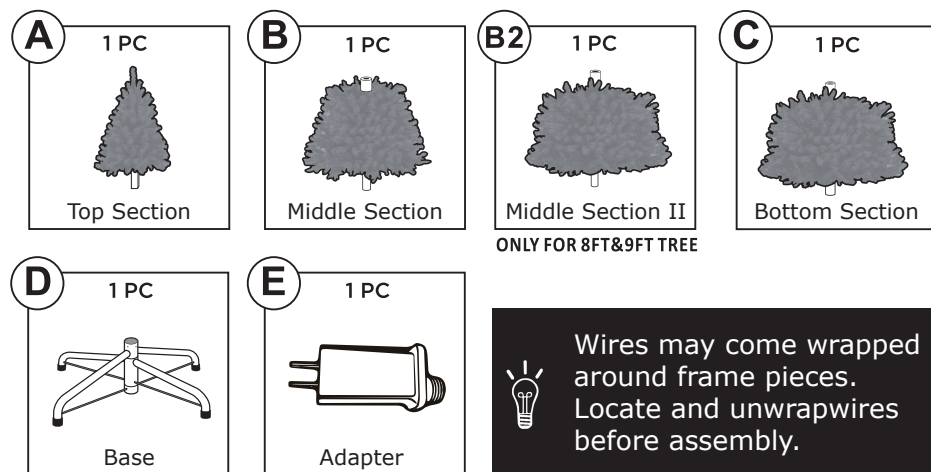


HARDWARE



WARNING: There are plastic caps on the end of each pole that are useless, please make sure remove them before assembling.
If the caps were broken or missing, please don't worry.

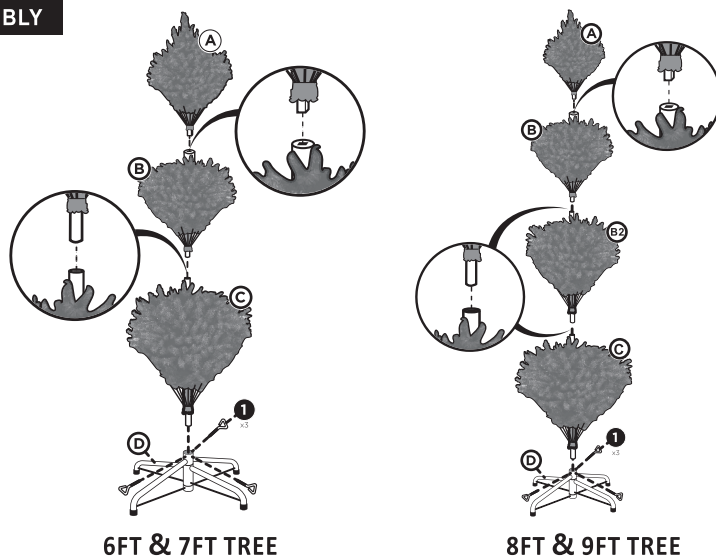
PARTS



PRODUCT ASSEMBLY

1

Assemble the Christmas tree.



Spread out the branches of the tree and rearrange them to your preference.

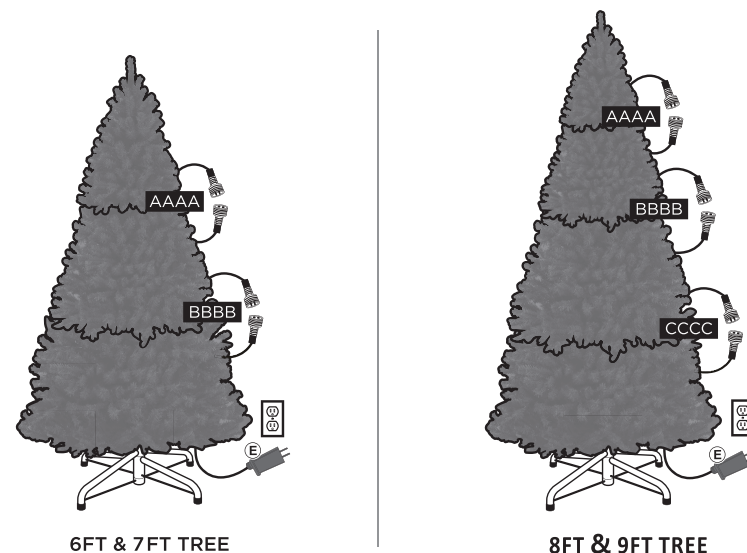


NOTE: NOTE: Bottom section is wider than middle section. Make sure they are in the correct order before inserting them into the base of the tree.

PRODUCT ASSEMBLY

2

Connect all the corresponding plugs. Spread out the branches and arrange them to your preference. Locate the power cord in the part C bottom, attach the part E adapter, and insert into a wall outlet to turn the lights on.



ANING & STORAGE

- >Store this tree in a cool and dry place away from heat and moisture.
- >Before putting this tree in storage, do the following:
 - Completely remove all decorations.
 - Clean the tree with a slightly damped cloth and let it dry naturally.
 - Raise all branches to original upright position; make sure not to damage any branches in the process.