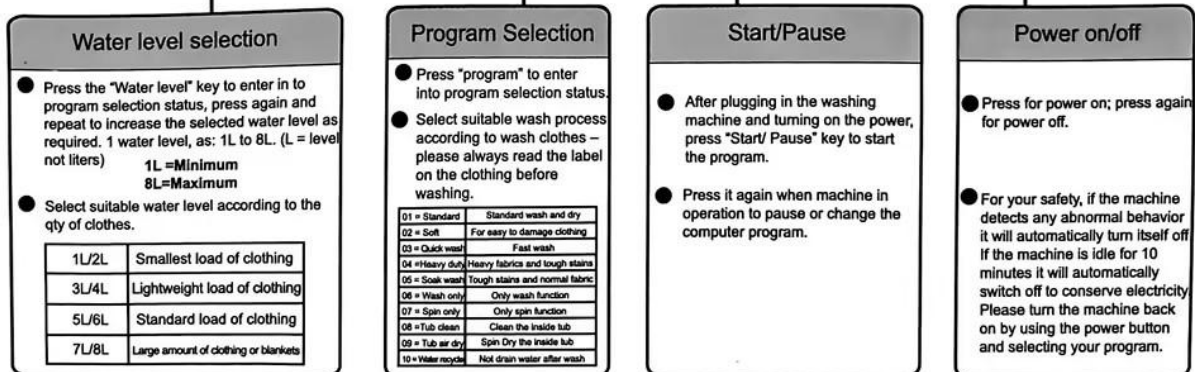
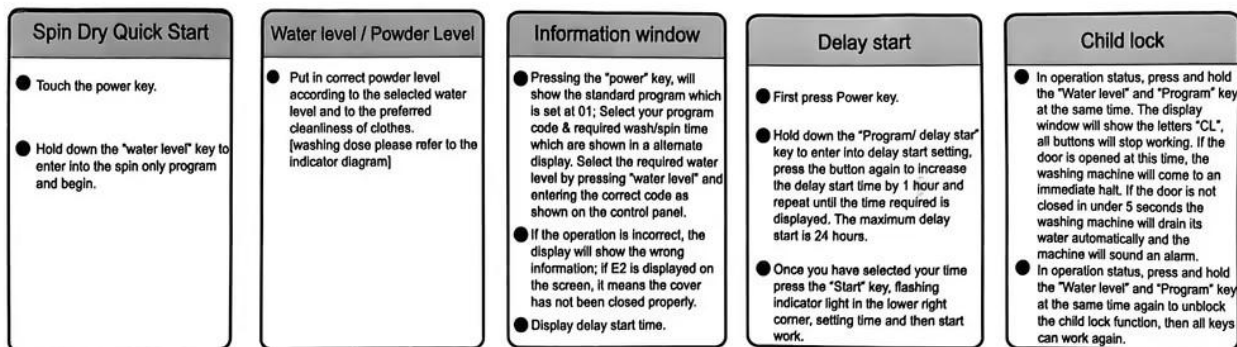


# Brief user guide

# Control panel instructions



## Remark:

- If you wish to delay the washing machines progress for any reason all you need to do is push the start/pause button again. Pushing the button again will begin the process; if this does not work, restart the machine by pushing the power button, the internal memory will continue its process automatically.
- After an Alarm has sounded due to improper activity, the machine will automatically switch off after 1 hour.
- If the machine is on standby for 10 minutes or longer in operation, the machine will automatically switch off.
- The machine was tested before leaving factory. It's normal if there is some water ,please feel easy yo use.

"L" shape pipe end connect to the washing machine

"Straight" pipe end connect to the faucet or adapter.

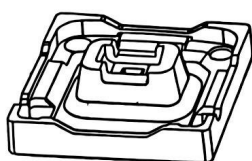
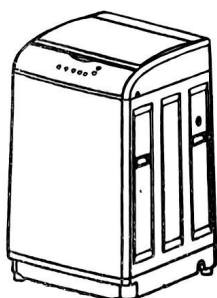
Don't forget to put this Extra O ring into the "Straight" Pipe end, when using Adapter.



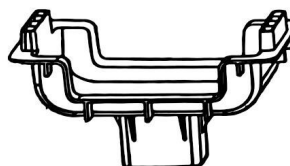
## Reminder and Error Code

### Reminder:

**1. Each machine is tested for water intake and drainage during production. Therefore, there may be water residues or traces of water inside the washing tub, which is a normal phenomenon.**



Bottom foam

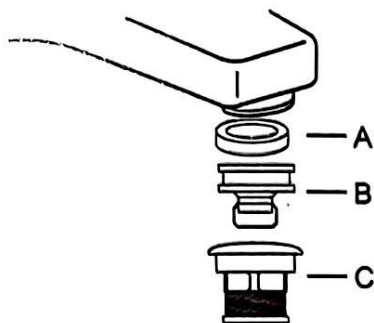


Plastic bracket

**2. Please remove the bottom foam before using the new machine! Plastic bracket is only keep the washing machine safe when shipment,the user can remove it or keep it.**

### Common faults

Error Digital Display Information	Error Reason	How to fix
E1 – Water Inlet Fault	<ul style="list-style-type: none"> <li>● Incoming water has taken over 20 minutes to reach water level.</li> <li>● The Inlet Valve is blocked or obstructed.</li> <li>● The Water supply is cut off or the stopcock is open.</li> </ul>	<ul style="list-style-type: none"> <li>● Check the reason for low water pressure, open and close the cover 1 time to restart operation.</li> <li>● Remove the blockage from the inlet valve, once done open and close the cover 1 time to restart operation.</li> <li>● Turn on the water supply or stopcock, once done open and close the cover 1 time to restart operation.</li> </ul>
E2 – Drainage Fault	<ul style="list-style-type: none"> <li>● Water drainage has taken over 5 minutes.</li> <li>● Drain valve blocked, damaged or faulty.</li> <li>● Drain pipe is damaged.</li> </ul>	<ul style="list-style-type: none"> <li>● Reposition the drain pipe for a more smooth water drainage, once done open and close the cover 1 time to restart operation.</li> <li>● Remove the blockage from the drain valve, once done open and close the cover 1 time to restart operation.</li> </ul>
E3- Top Cover Fault	<ul style="list-style-type: none"> <li>● The cover is open during use.</li> </ul>	<ul style="list-style-type: none"> <li>● Close the cover.</li> </ul>
E4 – Spin Fault	<ul style="list-style-type: none"> <li>● Clothes are not level or balanced.</li> <li>● The machine is standing at an incline.</li> </ul>	<ul style="list-style-type: none"> <li>● Reposition the clothes in the tub so they are balanced and level and close the cover.</li> <li>● Place the washing machine on a level surface, once done please open and close the cover.</li> </ul>
E5 – Water recycle reminder	<ul style="list-style-type: none"> <li>● The wahser is going to drain the water,now you can place the drain pipe in the water tank to collect the gray/waste water.</li> </ul>	<ul style="list-style-type: none"> <li>● Place the drain pipe in the water tank, then open nad close the top cover or press the "Start/Pause" key to drain the water.</li> </ul>
E6 – Water Level Fault	<ul style="list-style-type: none"> <li>Water level sensor fault.</li> <li>● Water Leakage.</li> <li>● Harness contact is loose.</li> <li>● Airway tube is loose.</li> </ul>	<ul style="list-style-type: none"> <li>● Unplug the machine, wait 10 seconds and replug the machine. If issue continues set water level to normal and restart the machine.</li> </ul>
E7 – Child Protection	<ul style="list-style-type: none"> <li>● Machine is Child locked but the cover has been opened.</li> </ul>	<ul style="list-style-type: none"> <li>● Ensure that your child is a safe distance from the machine and close the cover.</li> </ul>
Remarks	If unsolved the problem after use above methods, please contact maintenance dept and processional maintenance personnel, customer can not assemble or disassemble.	



## Reduce Water Use & Save Money

Danco aerators are Water Sense certified, which means they reduce water and save money. Upgrade to a Danco aerator at your local home improvement store.

### Instructions

**Tools Required:** Pliers, if needed

1. Check faucet for old aerator, remove old aerator if it exists. Use pliers if needed, being careful not to grip too tight.
2. Remove any washers that may be caught up inside of faucet spout.
3. Separate the 2 parts of Quick Connect Adapter (B+C).
4. Place new Washer (A) into spout and then install new Adapter (B), turning clockwise. **Hand tighten only.**
5. Attach the dishwasher hose to the Brass Coupler (C). Tighten with pliers. Snap Coupler (C) onto Adapter (B).
6. Turn on water. If leak occurs, tighten with pliers.

**Note:** There are 3 washers in the Adapter (B), only need to take out the top Washer (A) during using.

### Instrucciones

**Herramientas necesarias:** alicates, si es necesario

1. Revise el grifo para ver si hay aireador viejo, retire el aireador viejo si existe. Utilice pinzas si es necesario, teniendo cuidado de no apretar demasiado.
2. Quite las arandelas que puedan quedar atrapadas dentro de la salida del grifo.
3. Separe las 2 partes del adaptador de conexión rápida (B + C).
4. Coloque una nueva arandela (A) en el pico y luego instale un nuevo adaptador (B), girando en el sentido de las agujas del reloj. **Apriete a mano solamente.**
5. Conecte la manguera del lavavajillas al acoplador de latón (C). Apriete con unos alicates. Encaje el acoplador (C) en el adaptador (B).
6. Encienda el agua. Si se produce una fuga, apriete con unos alicates.

**Nota:** Hay 3 arandelas en el adaptador (B), solo es necesario sacar la arandela superior (A) durante el uso.

## Reduzca el Uso de Agua y Ahorre Dinero

Los aireadores Danco cuentan con la certificación Watersense, lo que significa que reducen el agua y ahorran dinero. Actualice a un aireador Danco en su tienda local de mejoras para el hogar.



**Δ WARNING:** This product can expose you to chemicals including Lead, which is known to the State of California to cause cancer and birth defects or other reproductive harm.

For more information go to  
[www.P65Warnings.ca.gov](http://www.P65Warnings.ca.gov).

**Δ ADVERTENCIA:** Este producto puede exponerlo a sustancias químicas, incluido el plomo, que según el estado de California causa cáncer y defectos de nacimiento u otros daños reproductivos.

Para obtener más información, visite  
[www.P65Warnings.ca.gov](http://www.P65Warnings.ca.gov).

**QUICK CONNECT  
AERATOR  
ADAPTER**



- Connects Portable Dishwasher to Sink
- Connects Garden Hose To Male or Female Sink

**ADAPTADOR DE AIREADOR DE CONEXIÓN RÁPIDA**

- Conecta el lavaplatos portátil al fregadero
- Conecta la manguera de jardín al fregadero masculino o femenino