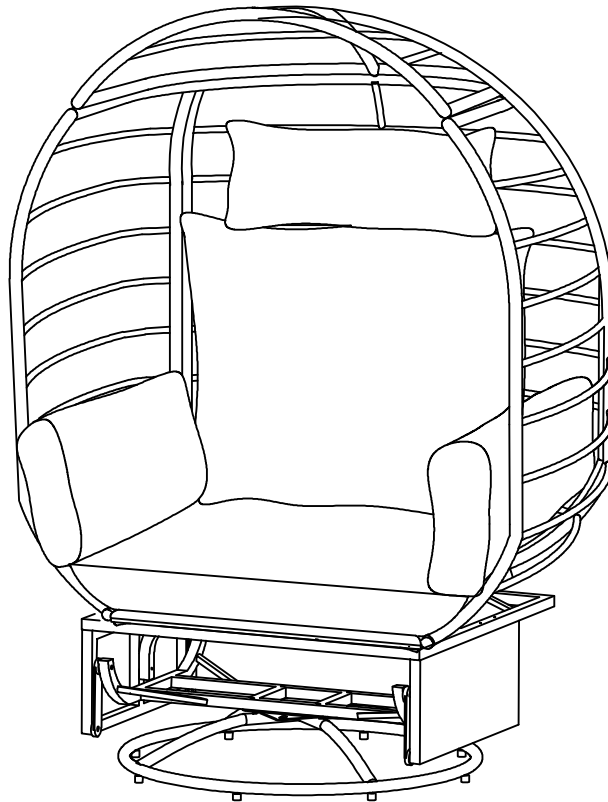


# ASSEMBLY INSTRUCTION

## OUTDOOR SWIVEL CHAIR



**WF318105**

**Please read all instructions carefully:**

**1. Have 2 adults on hand for assembly.**

**2. 50% Tighten before fixing all screws, Allen wrench is recommended instead of an electric drill.**

**3. Place the item on a flat ground to adjust and make sure it remains stable.**

**4. Tighten up all screws with tools gradually.**

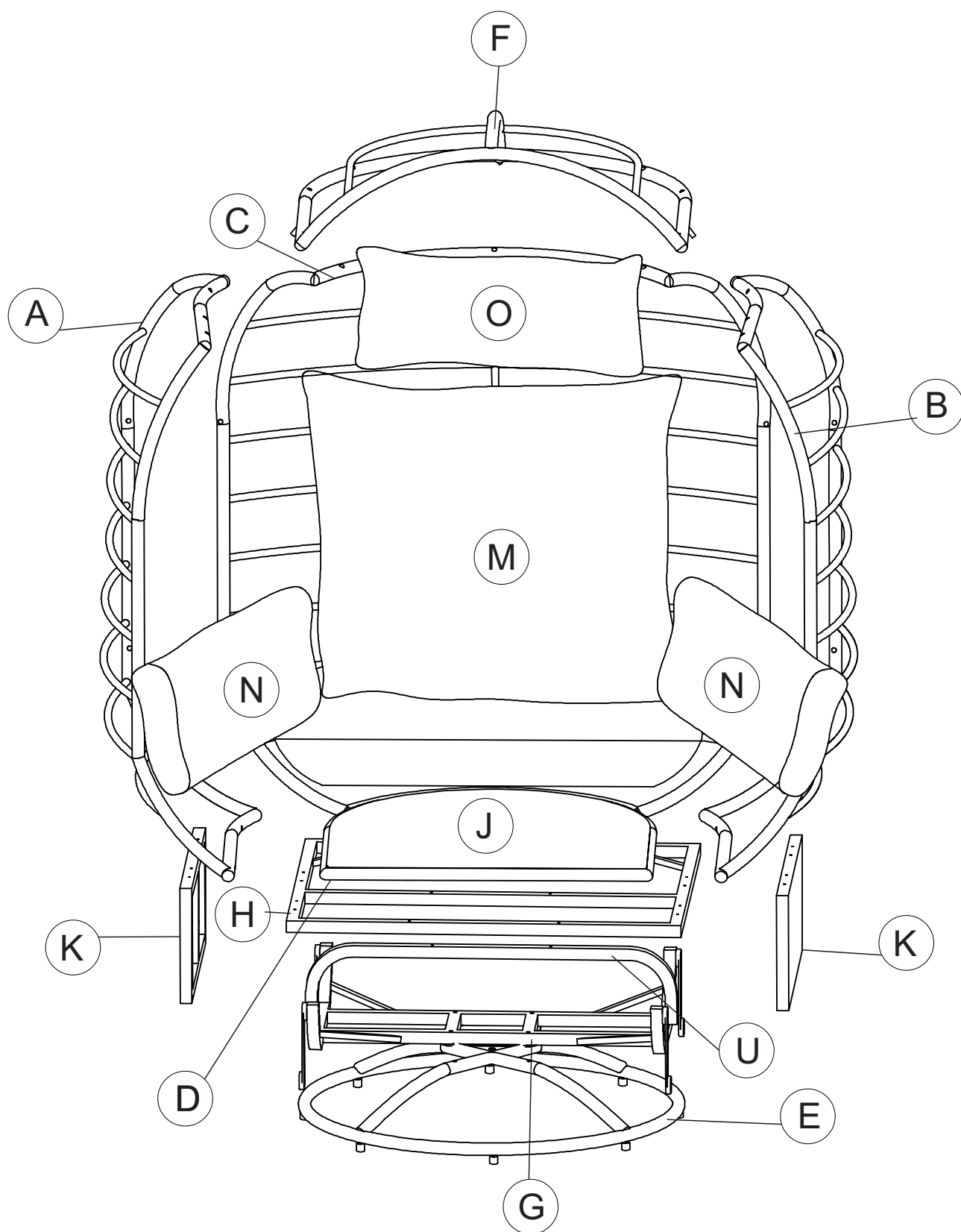
**5. If the screws are not aligned with holes during assembly, please loosen all the other screws to 50% and continue the assembly process.**

**6. If the item is not stable, please loosen all the screws, adjust it on a flat ground and tighten up all screws again.**

**7. Note : If one or some screws are fully tightened during assembly, chances are the others will not be aligned with holes. In addition, all the holes are designed to be relatively larger to provide more space for the adjustment of the screws.**

If you have any questions, please feel free to contact us.


















Email: [lowesteam@aminalife.com](mailto:lowesteam@aminalife.com)



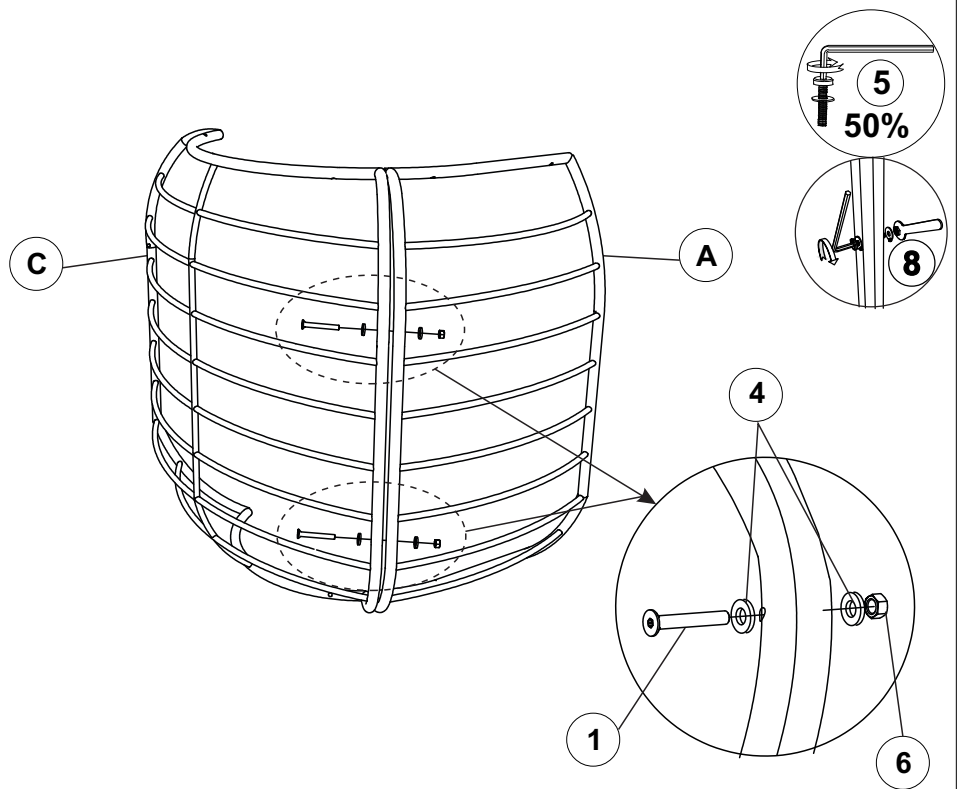
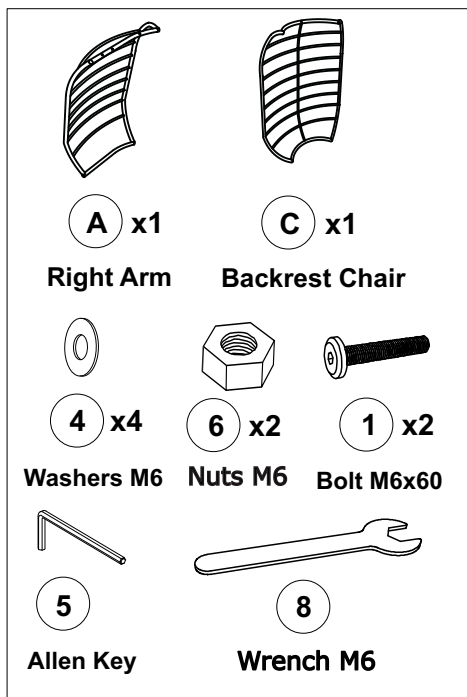
# Part List :

<div>A</div> <div>A curved armrest with horizontal slats.</div> <div>Right Arm (1pc)</div>	<div>B</div> <div>A curved armrest with horizontal slats, mirror image of A.</div> <div>Left Arm (1pc)</div>	<div>C</div> <div>A curved backrest with horizontal slats.</div> <div>Backrest Chair (1pc)</div>	<div>D</div> <div>A rectangular seat frame with diagonal cross-bracing.</div> <div>Seat Chair (1pc)</div>
<div>E</div> <div>An oval-shaped base frame with internal cross-bracing.</div> <div>Seat Base (1pc)</div>	<div>F</div> <div>A curved, padded seat cover with a central seam.</div> <div>Seat Cover (1pc)</div>	<div>G</div> <div>A rectangular frame with a central pivot point and four legs.</div> <div>Rotating Frame (1pc)</div>	<div>H</div> <div>A rectangular frame with internal cross-bracing.</div> <div>Rectangle Frame (1pc)</div>
<div>I</div> <div>A U-shaped frame with two curved ends.</div> <div>U-Shape Frame (1pc)</div>	<div>J</div> <div>A rectangular cushion with a central seam.</div> <div>Cushion (1pc)</div>	<div>K</div> <div>A rectangular frame with a central pivot point and two legs.</div> <div>Side Frame (2pcs)</div>	<div>M</div> <div>A rectangular mattress with a central seam and four corner ties.</div> <div>Mattress (1pc)</div>
<div>N</div> <div>A rectangular pillow with a central seam.</div> <div>Big Pillow (2pcs)</div>	<div>O</div> <div>A small rectangular pillow with a central seam.</div> <div>Small Pillow (1pc)</div>		

# Hardware list:

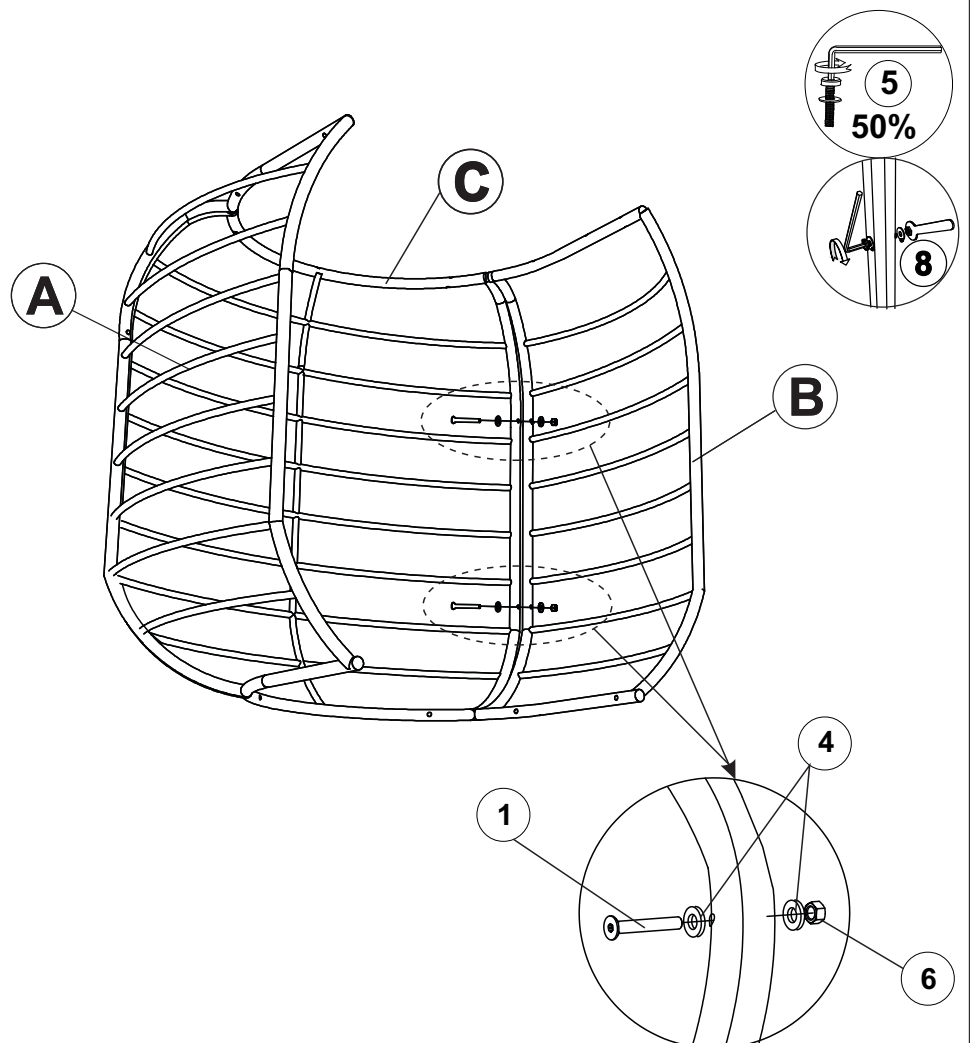
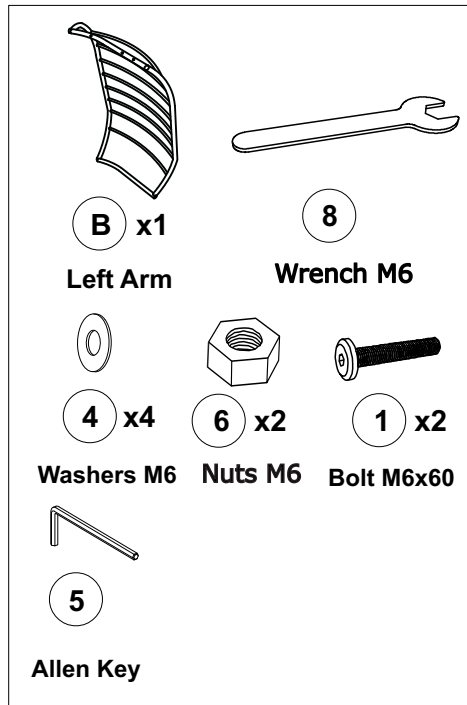
<b>1</b>  <b>M6x60mm</b> <b>(10 pcs)</b>	<b>2</b>  <b>M8x35mm</b> <b>(12 pcs)</b>	<b>3</b>  <b>M6x40mm</b> <b>(21 pcs)</b>	<b>4</b>  <b>Flat Washer M6</b> <b>(41 pcs)</b>
<b>5</b>  <b>Allenkey</b> <b>(2 pcs)</b>	<b>6</b>  <b>Nuts M6</b> <b>(10 pcs)</b>	<b>7</b>  <b>Nuts M8</b> <b>(12 pcs)</b>	<b>8</b>  <b>Wrench M6</b> <b>(1 pc)</b>
<b>9</b>  <b>Wrench M8</b> <b>(1 pc)</b>	<b>10</b>  <b>Plastic Bolt's Cap</b> <b>(10 pcs)</b>	<b>11</b>  <b>Plastic Nut's Cap</b> <b>(10 pcs)</b>	<b>12</b>  <b>Y-Shape Bars</b> <b>(4 pcs)</b>
<b>13</b>  <b>Square Bars</b> <b>(1 pc)</b>	<b>14</b>  <b>Plastic foot</b> <b>(8 pcs)</b>	<b>15</b>  <b>Flat Washer M8</b> <b>(36 pcs)</b>	<b>16</b>  <b>Spring Washer</b> <b>(20 pcs)</b>
<b>17</b>  <b>M8x50mm</b> <b>(4 pcs)</b>			

# STEP 1



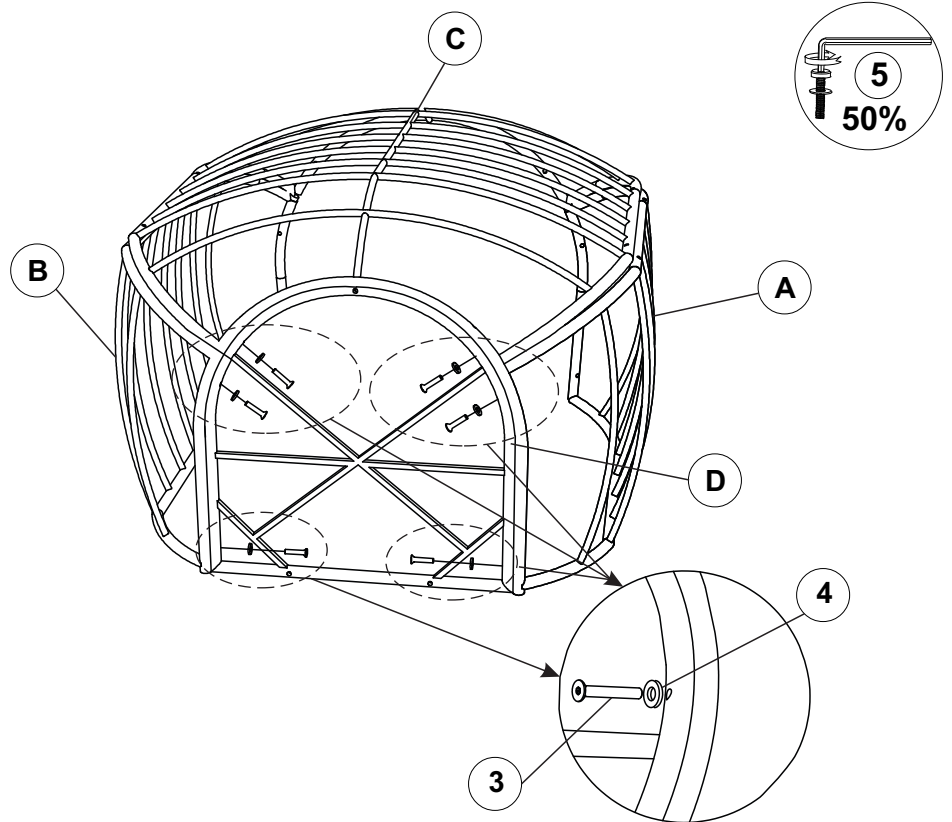
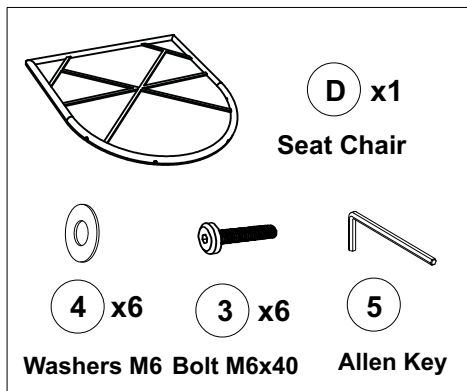
Connect Right Arm (A) & Backrest Chair (C) With Allen Key (5) & Wrench (8)

# STEP 2



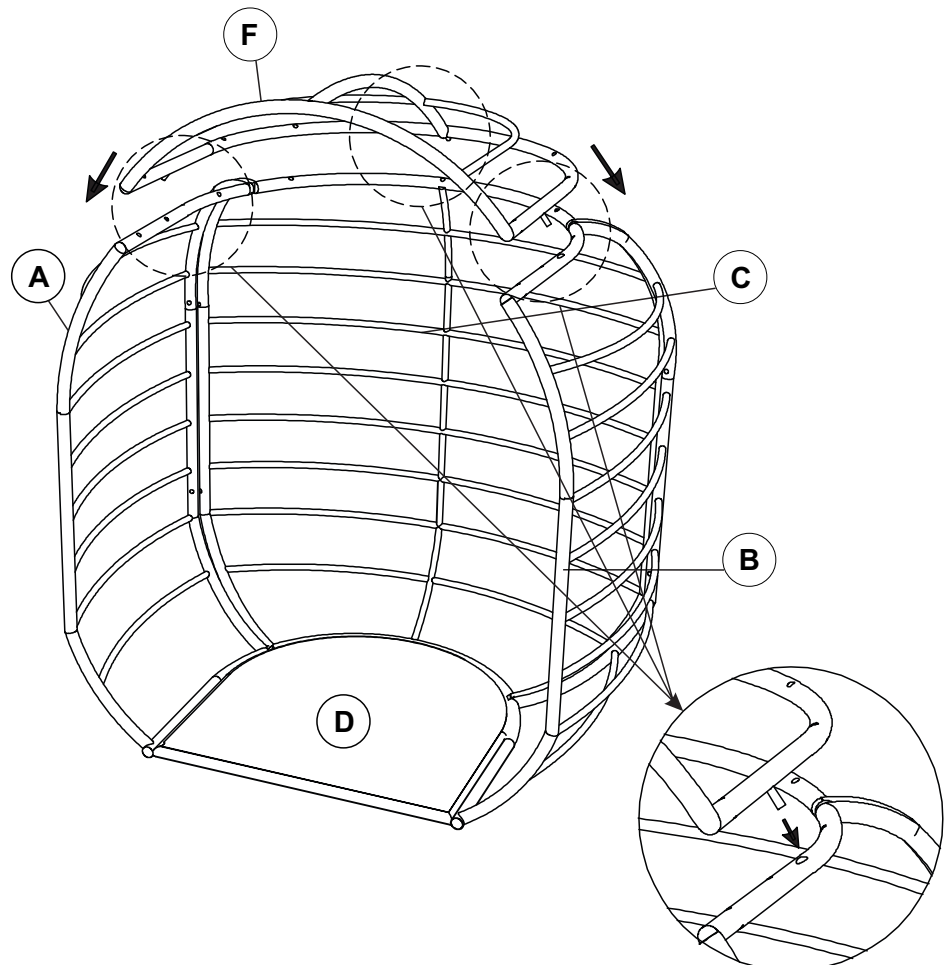
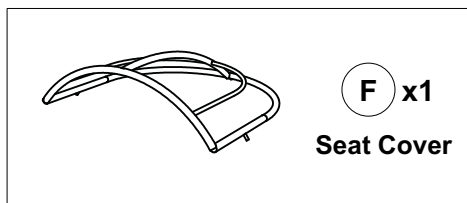
Connect Left Arm (B) & Backrest Chair (C) With Allen Key (5) & Wrench (8)

## STEP 3



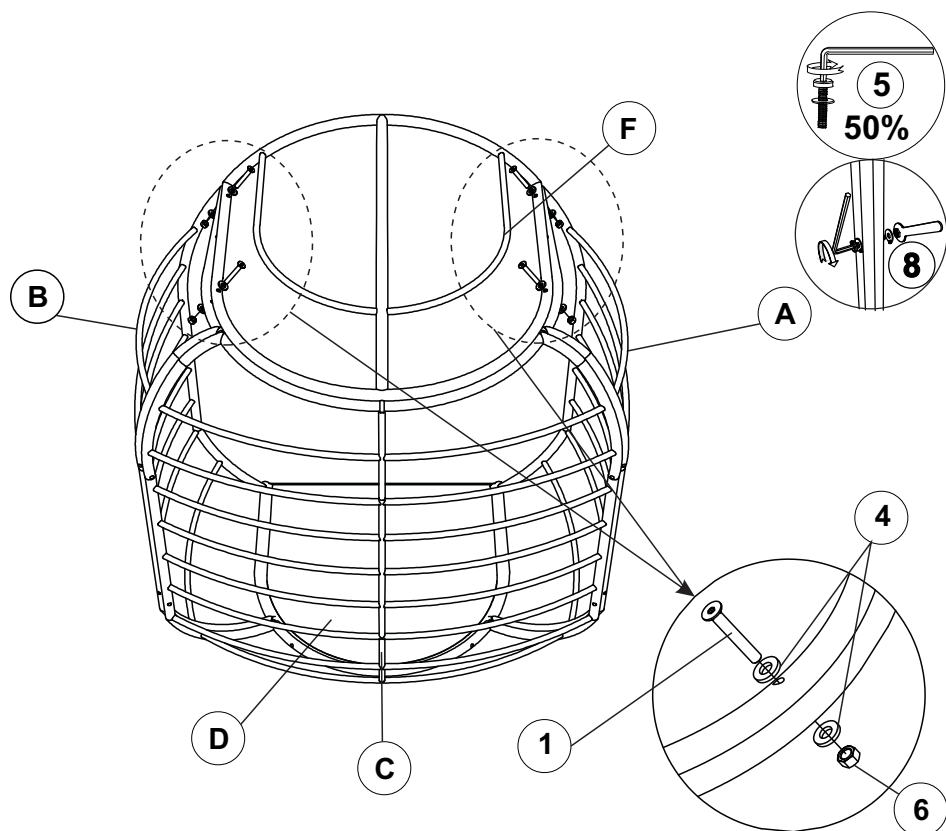
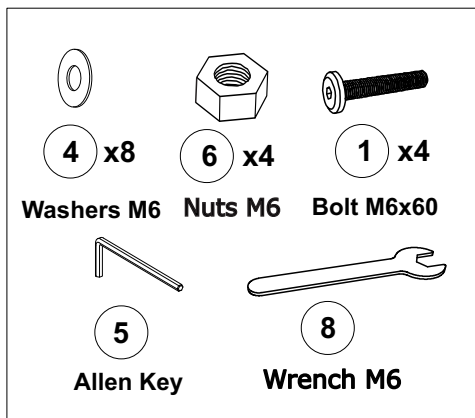
Connect Seat Chair (D), Right Arm (A), Left Arm (B), Backrest Chair (C) With Allen Key (5).

## STEP 4



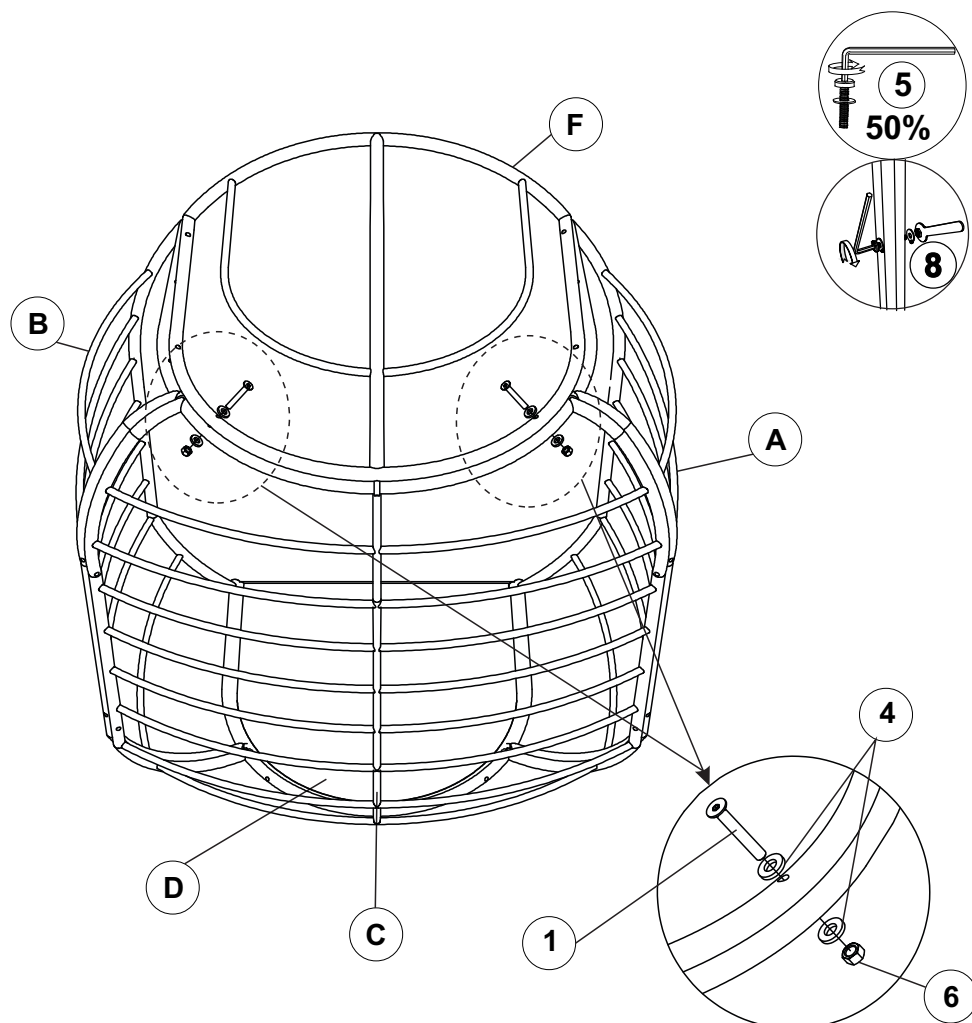
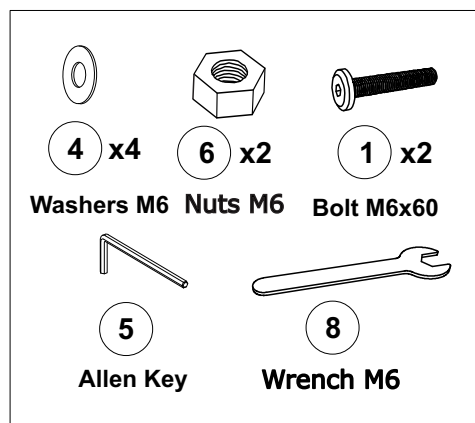
Connect Seat Cover (F) & Right Arm (A), Left Arm (B), Backrest Chair (C).

## STEP 5



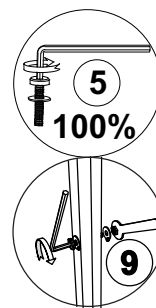
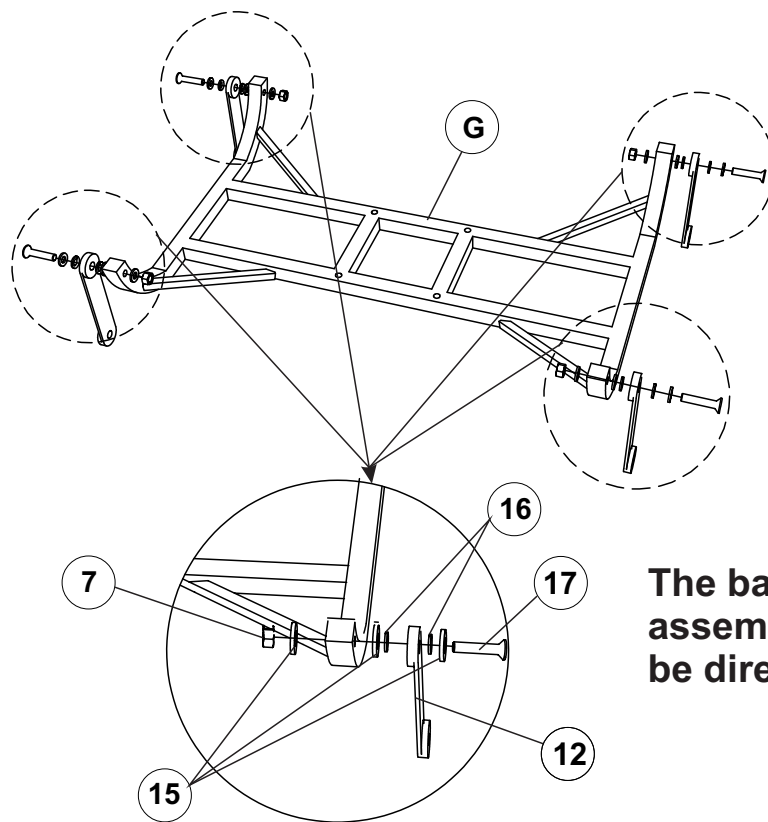
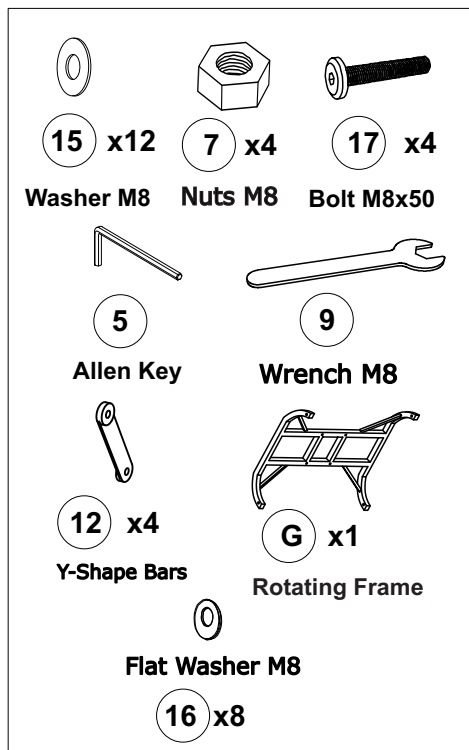
Connect Seat Cover (F) & Right Arm (A), Left Arm(B) With Allen Key (5) & Wrench (8).

## STEP 6



Connect Seat Cover (F) & Backrest Chair (C) With Allen Key (5) & Wrench (8).

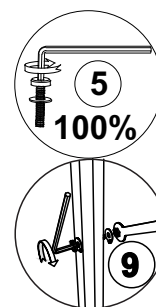
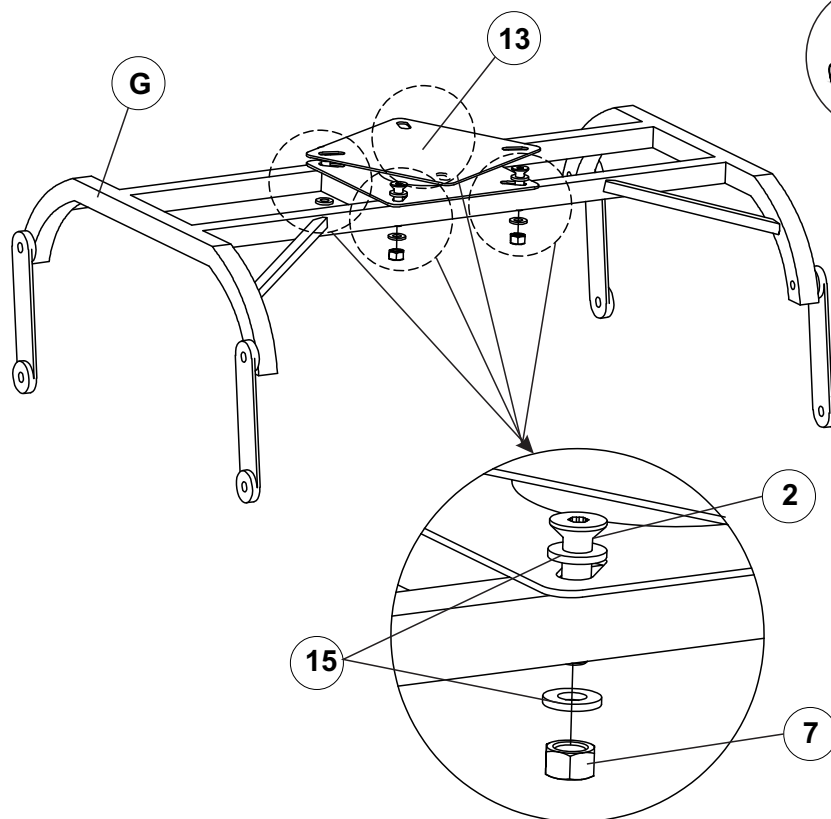
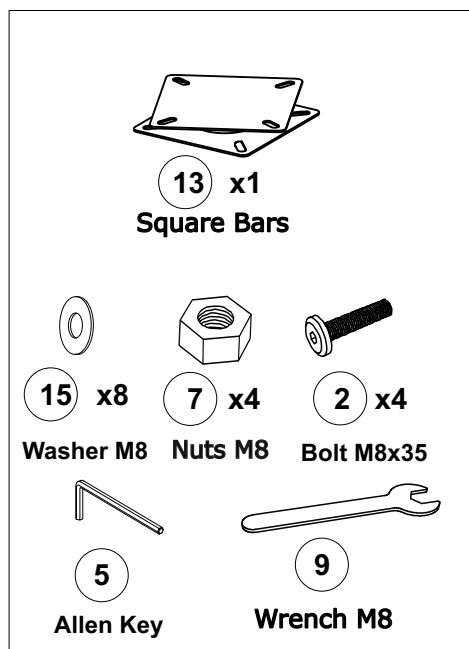
## STEP 7



The bars have to be assembled in this direction

Connect All Bars Y-Shape (13) onto Rotating Frame (G) With Allen key (5) & Wrench (9).

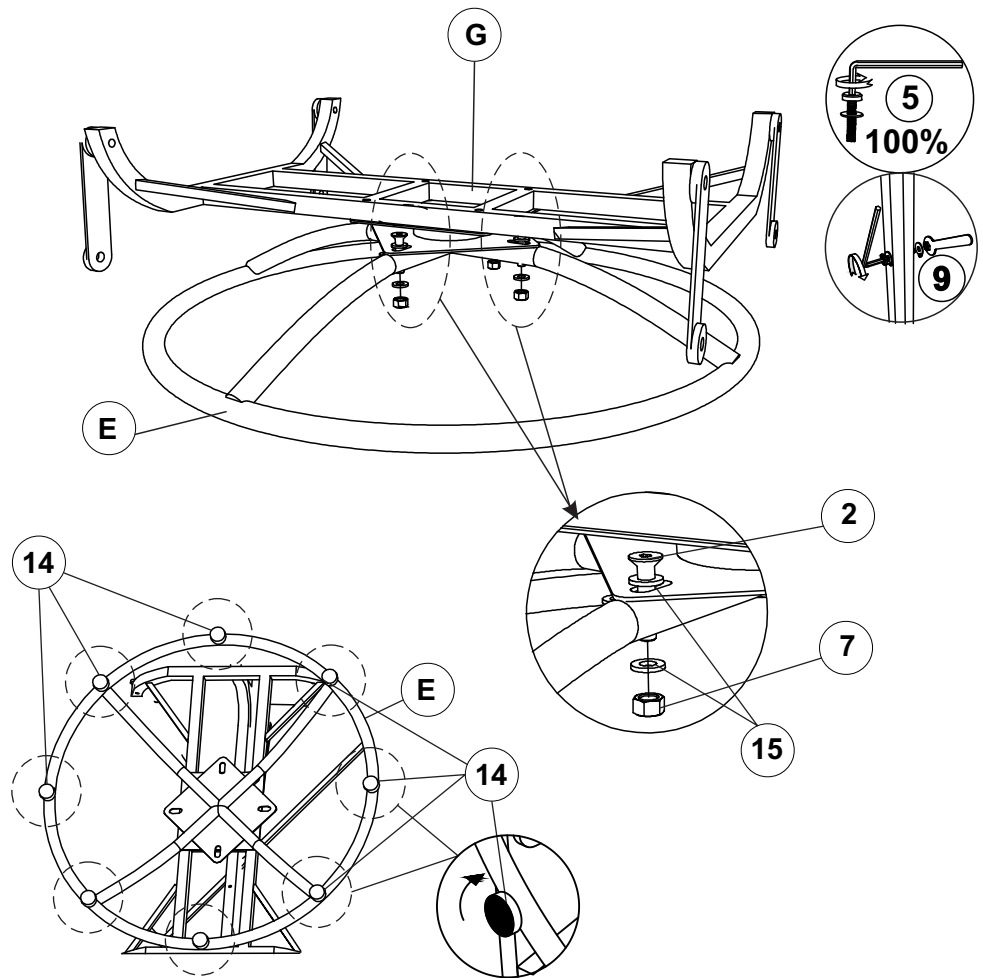
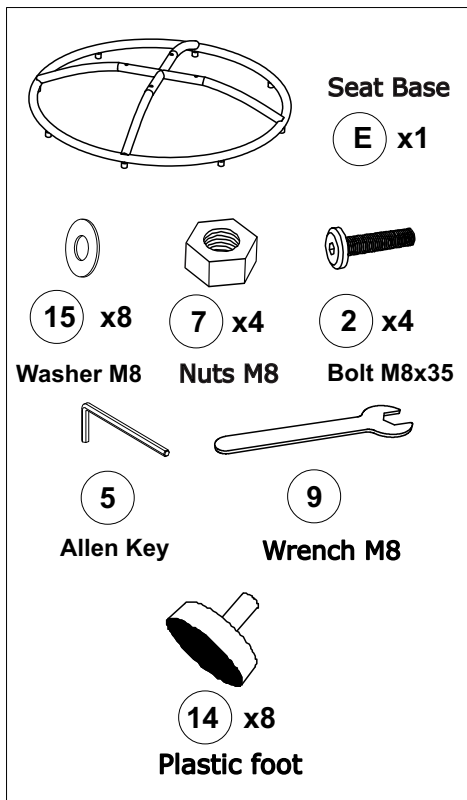
## STEP 8



Connect Bars Square (14) & Rotating Frame (G) With Allen Key (5), Wrench (9).

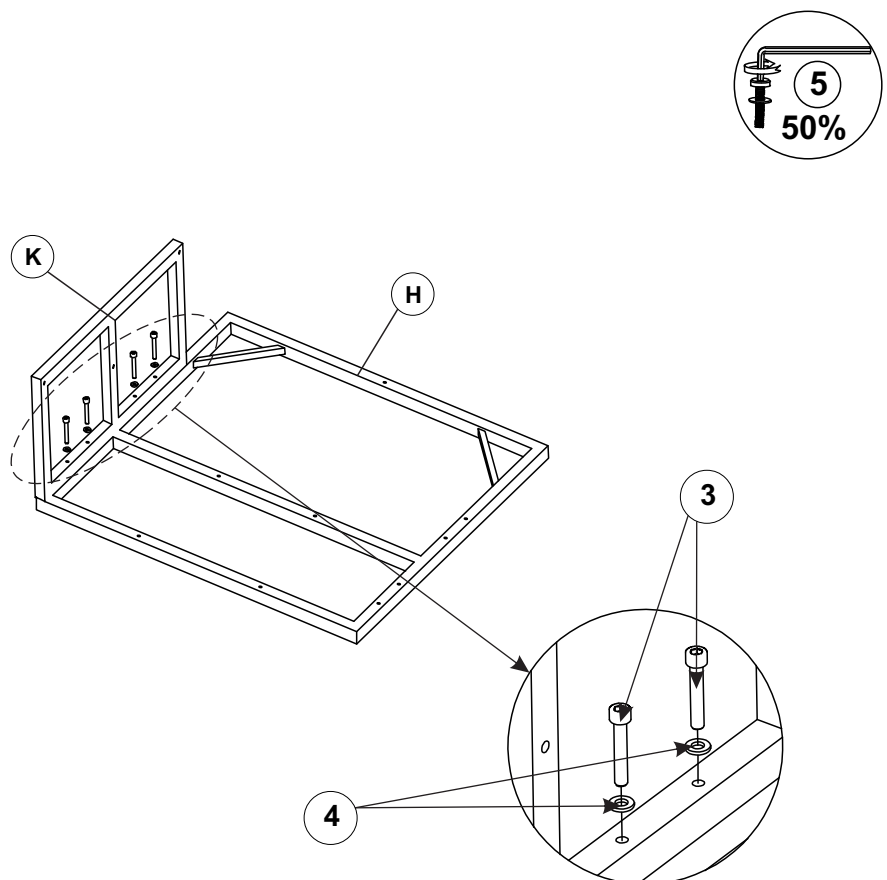
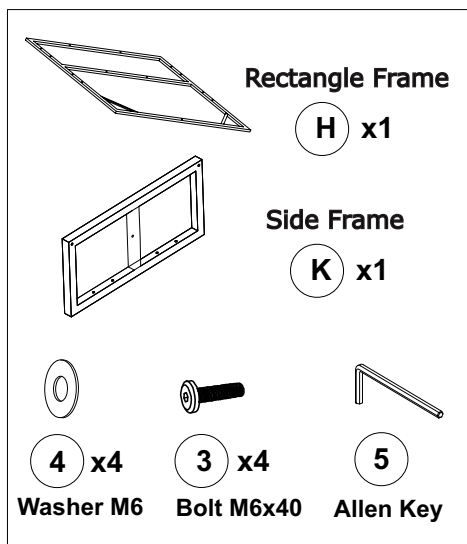


## STEP 9



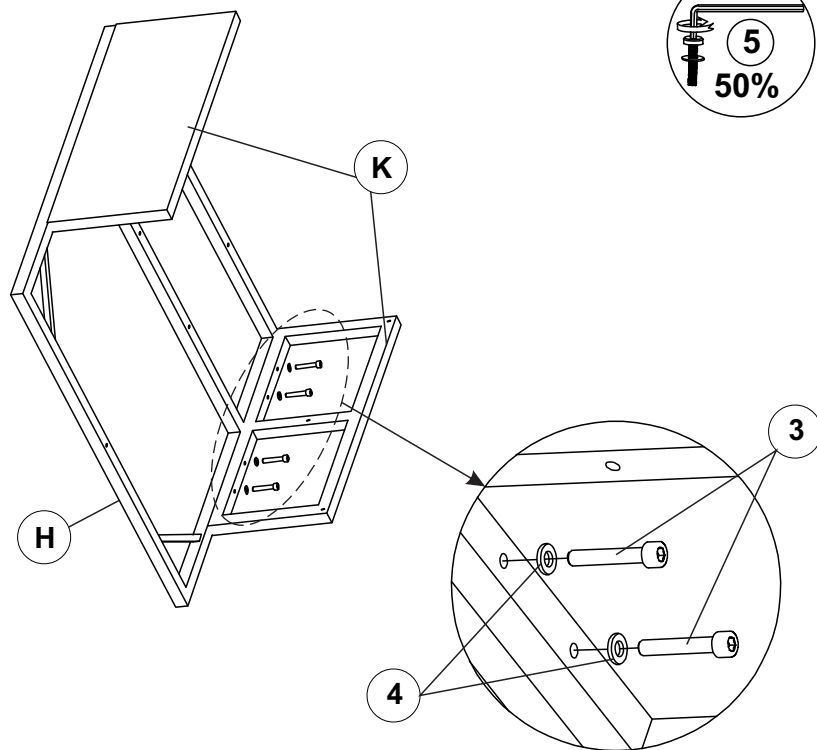
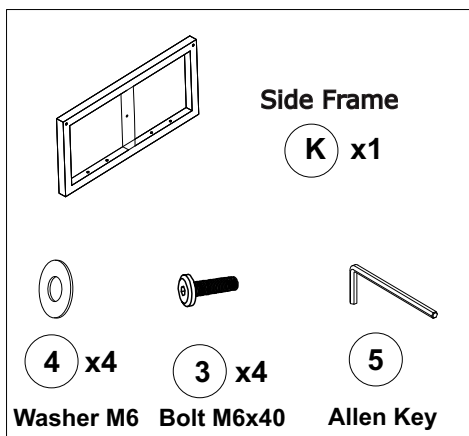
Connect Seat Base (E) & Rotating Frame (G) With Allen key (5) & Wrench (9).  
Connect Plastic foot (14) with Seat Base (E) by handle.

## STEP 10



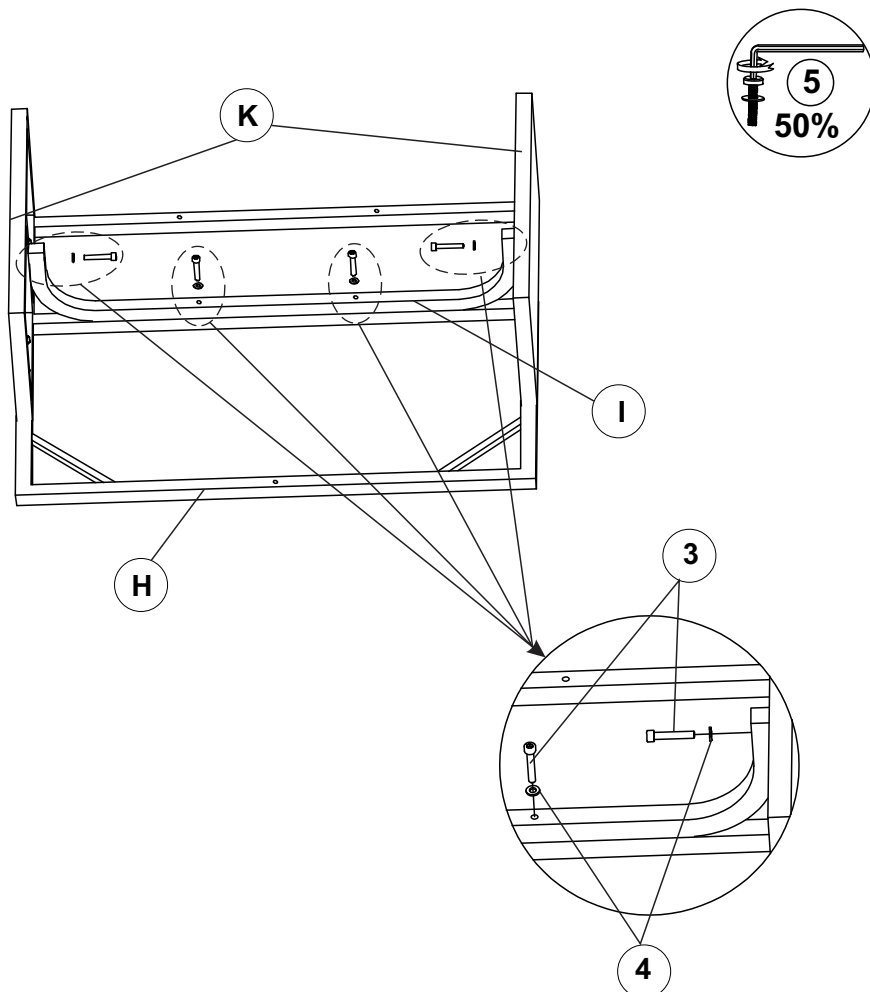
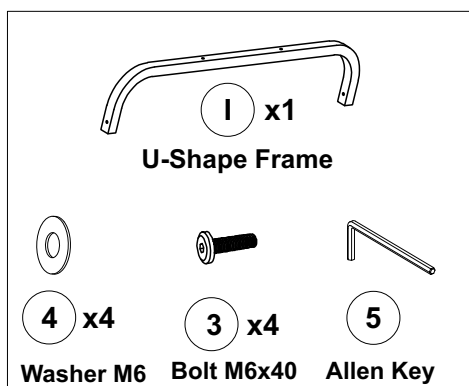
Connect Rectangle Frame (H) & Side Frame (K) With Allen Key (5).

# STEP 11



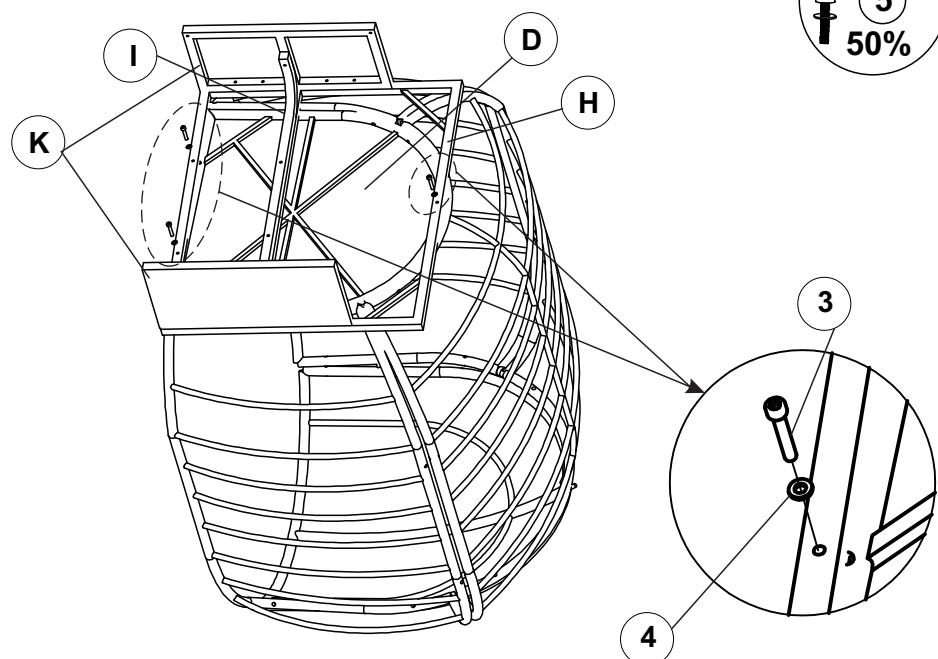
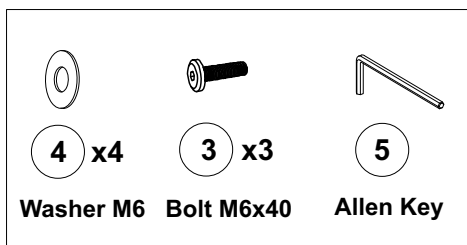
Connect Rectangle Frame (H) & Side Frame (K) With Allen Key (5).

# STEP 12



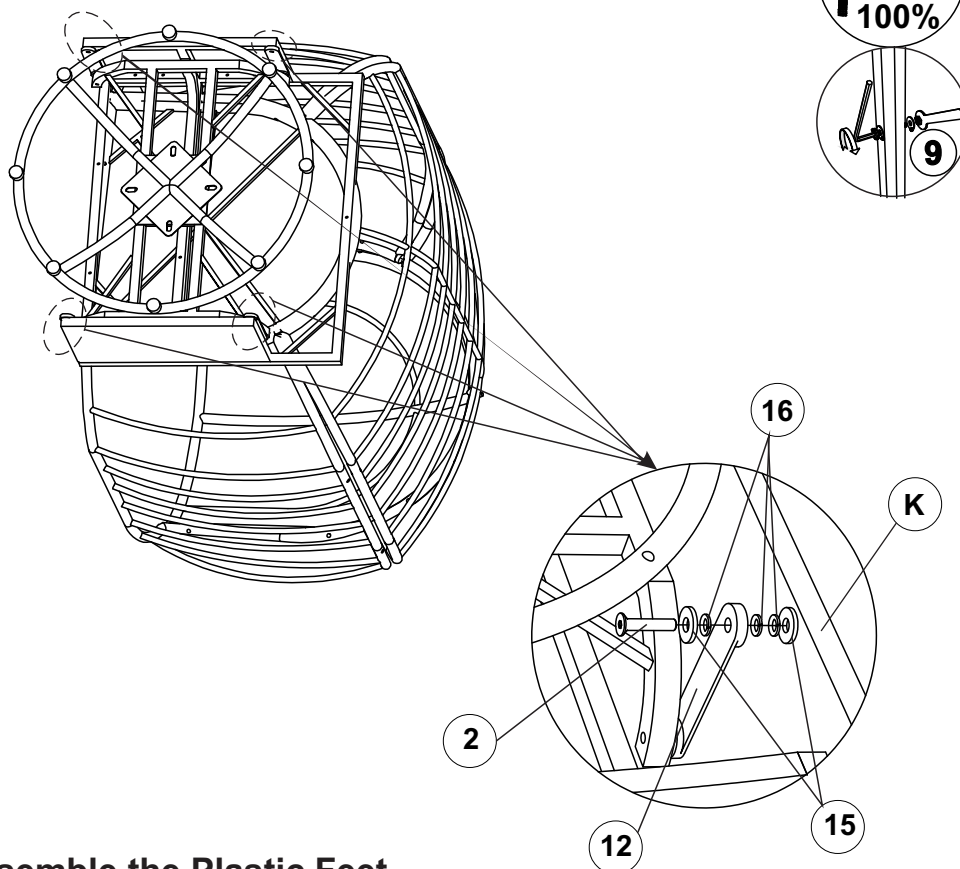
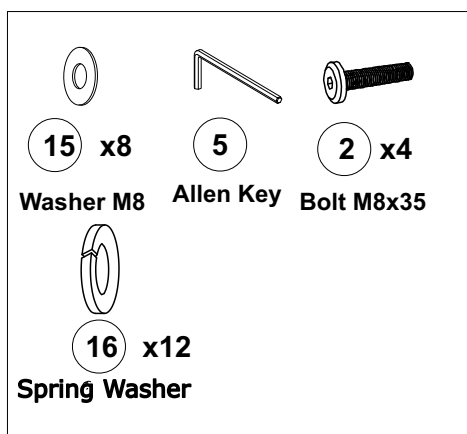
Connect U-Shape Frame (I) & Side Frame (K), Rectangle Frame (H) With Allen Key (5).

## STEP 13



Connect Frame Of Step 12 & Frame Of Step 6 With Allen Key (5).

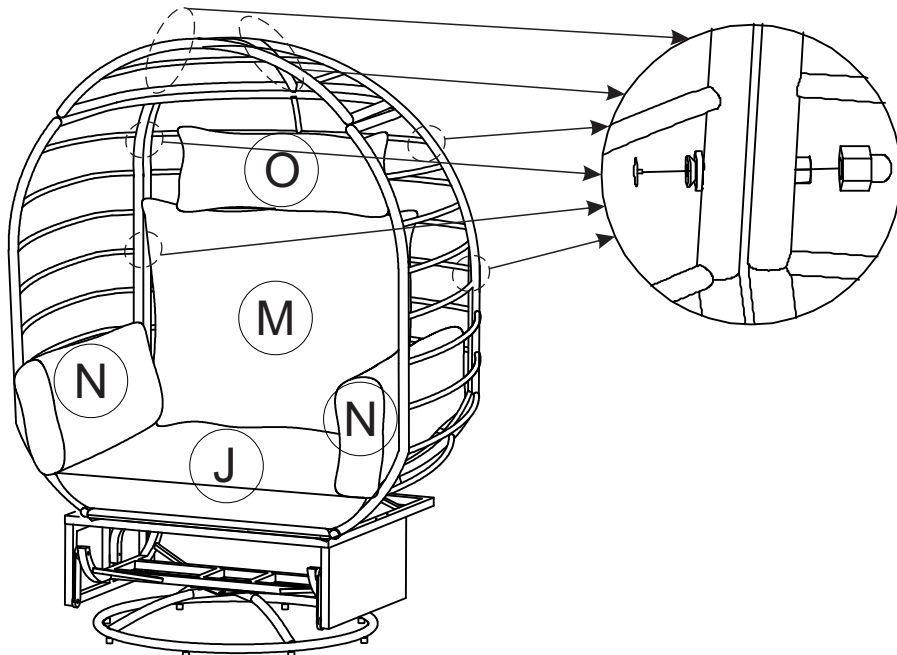
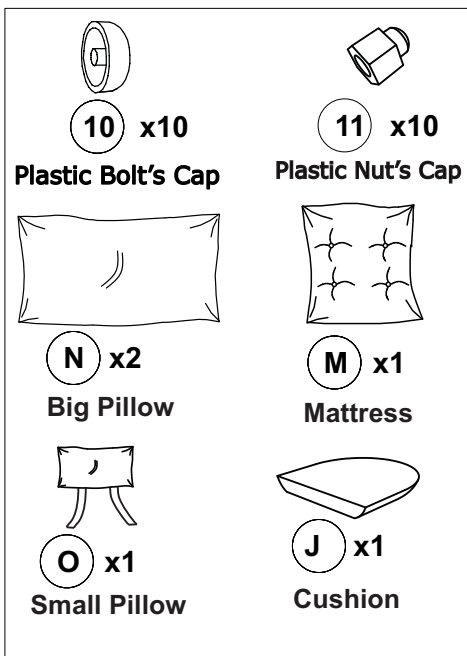
## STEP 14



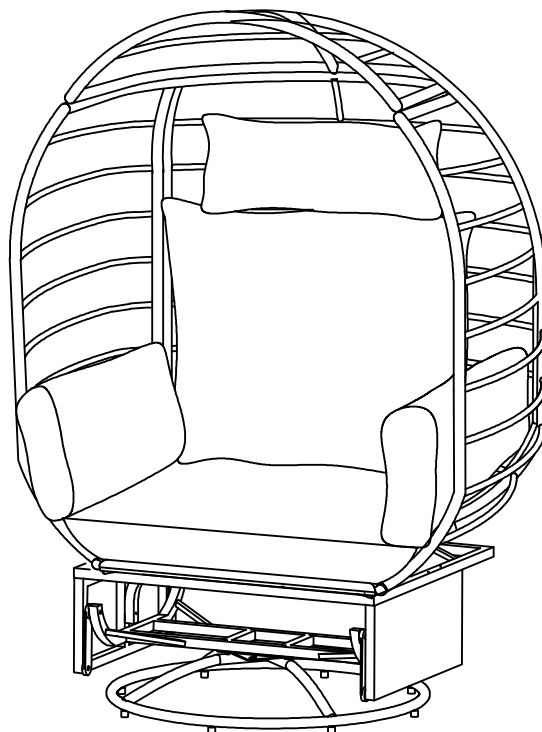
Assemble the Plastic Feet

Connect Frame Of Step 13 & Frame Of Step 9 With Allen Key (5)

# STEP 15



Attach the bolt cover with Plastic Nuts(11) & Plastic Bolt's Cap (10)  
 Put Big Pillow (N), Mattress (M), Small Pillow (O) , Cushion (J) on Chair



## FINISH