



ITEM #5971304/5979051

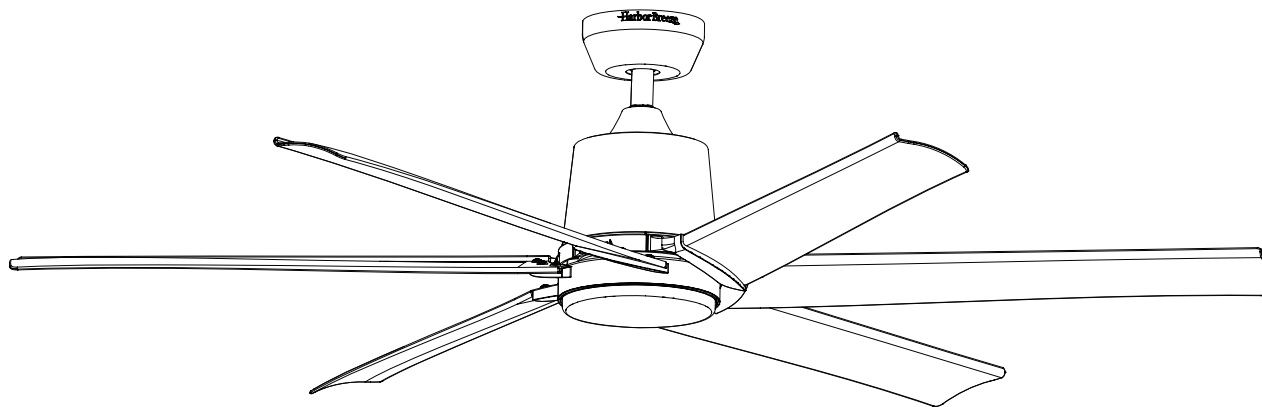
MODEL #43300/43378

# OUTERMARK CEILING FAN

**Español p. 20**

**ATTACH YOUR RECEIPT HERE**

HARBOR BREEZE and logo design are trademarks or registered trademarks of LF, LLC. All rights reserved.



**RATED FOR  
WET  
LOCATIONS**



**Intertek**

Purchase Date \_\_\_\_\_

Thank you for purchasing this HARBOR BREEZE product.  
Questions, problems, or missing parts?  
Before returning, contact us at:  
**888-251-1003**, 8 a.m. - 8 p.m., EST, Monday - Sunday or at **ascs@lowes.com**.

**TABLE OF CONTENTS**

---

Package Contents . . . . . 3

Hardware Contents . . . . . 4

Safety Information . . . . . 5

Preparation . . . . . 6

Initial Installation . . . . . 7

Standard or Angle Mounting Instructions. . . . . 9

Wiring . . . . . 11

Final Installation. . . . . 12

Operating Instructions . . . . . 15

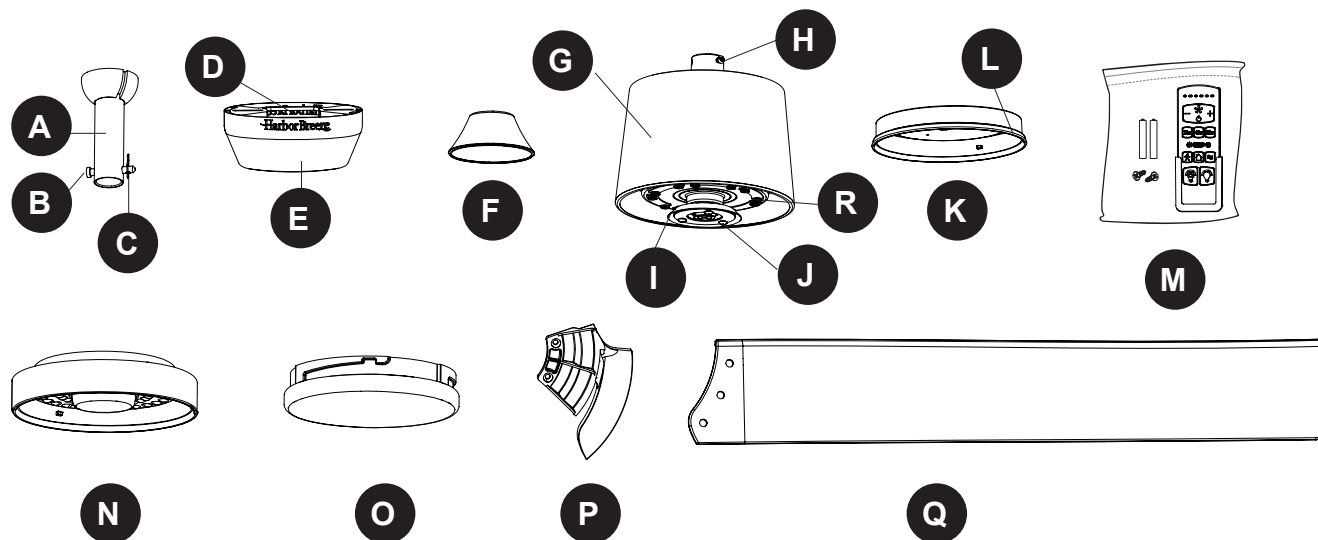
Care and Maintenance . . . . . 16

Troubleshooting. . . . . 16

Limited Lifetime Warranty . . . . . 18

Replacement Parts List . . . . . 19

## PACKAGE CONTENTS



PART	DESCRIPTION	QUANTITY
A	Downrod	1
B	Downrod Pin (preassembled to the Downrod [A])	1
C	Downrod Clip (preassembled to the Downrod [A])	1
D	Mounting Bracket (preassembled to Canopy [E])	1
E	Canopy	1
F	Yoke Cover	1
G	Motor Assembly	1
H	Set Screw (preassembled to the Motor Assembly [G])	2
I	Fitter Plate (preassembled to the Motor Assembly [G])	1
J	Fitter Plate Screw (preassembled to the Fitter Plate [I])	3
K	Light Pan	1
L	Light Pan Screw (preassembled to the Light Pan [K])	3
M	Remote Pack	1
N	Light Kit	1
O	Glass Bowl	1
P	Blade Arm	6
Q	Blade	6
R	Motor Screw (preassembled to the Motor Assembly [G])	12

**HARDWARE CONTENTS**

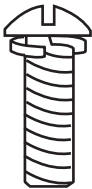
---

**AA**



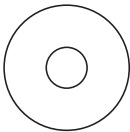
Wire Connector  
Qty. 1  
+ 1 extra

**BB**



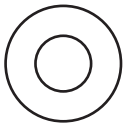
Blade Screw  
Qty. 18  
+ 1 extra

**CC**



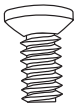
Blade Washer  
Qty. 18  
+ 1 extra

**GG**



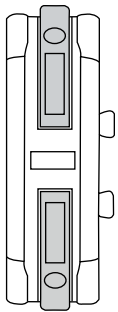
Rubber Washer  
Qty. 18  
+ 1 extra

**XX**



Motor Screw  
1 extra

**FF**



Push-In  
Connector  
Qty. 2  
+ 1 extra



## SAFETY INFORMATION

---

Please read and understand this entire manual before attempting to assemble, operate or install the product.

- Before you begin installing the fan, disconnect the power by removing fuses or turning off the circuit breakers.
- Make sure all electrical connections comply with local codes, ordinances, the National Electrical Code and ANSI/NFPA 70-199. Hire a qualified electrician or consult a do-it-yourself wiring handbook if you are unfamiliar with installing electrical wiring.
- Make sure the installation site you choose allows a minimum clearance of 7 ft. from the blades to the floor and at least 30 in. from the end of the blades to any obstruction.
- The net weight of this fan is: 18.83 lb (8.54 kg).



**DANGER:** When using an existing outlet box, make sure the outlet box is securely attached to the building structure and can support the full weight of the fan. Failure to do this can result in serious injury or death. The stability of the outlet box is essential in minimizing wobble and noise in the fan after installation is complete.



**WARNING:** To avoid personal injury, the use of gloves may be necessary while handling fan parts with sharp edges.



**WARNING:** Using a full-range dimmer switch to control fan speed will cause a loud humming noise from the fan. To reduce the risk of fire or electric shock, do NOT use this fan with any solid-state speed control device.



**WARNING:** To reduce the risk of fire, electric shock or personal injury, mount the fan to an outlet box marked “ACCEPTABLE FOR FAN SUPPORT” and use the mounting screws provided with the outlet box. Most outlet boxes commonly used for the support of lighting fixtures are not acceptable for fan support and may need to be replaced. Consult a qualified electrician if in doubt. Secure the outlet box directly to the building structure. The outlet box and its support must be able to support the moving weight of the fan (at least 35 lbs.).



**WARNING:** To reduce the risk of fire, electric shock or personal injury, wire connectors provided with this fan are designed to accept only one 12-gauge house wire and two lead wires from the fan. If your house wire is larger than 12-gauge and/or there is more than one house wire to connect to the two fan lead wires, consult an electrician for the proper size wire connectors to use.



**WARNING:** To reduce the risk of fire, electric shock or personal injury, do not bend the blade arms when installing them, balancing the blades or cleaning the fan. Do not insert objects between the rotating fan blades.



**WARNING:** To reduce the risk of personal injury, use only parts provided with this fan. The use of parts OTHER than those provided with this fan will void the warranty.



## **SAFETY INFORMATION**

---

**CAUTION:** Read all instructions and safety information before installing your new fan. Review the accompanying assembly diagrams.

**CAUTION:** Be sure the outlet box is properly grounded or that a ground (green or bare) wire is present.

**CAUTION:** Carefully check all screws, bolts and nuts on the fan motor assembly to ensure they are secured.

**CAUTION:** This device complies with part 15 of FCC Rules. Operation is subject to the following two conditions: 1) This device may cause harmful interference, and 2) this device must accept any interference received, including interference that may cause undesired operation.

**CAUTION:** This equipment has been tested and found to comply with the limits for a Class B digital device, pursuant to Part 15 of the FCC Rules. These limits are designed to provide reasonable protection against harmful interference in a residential installation. This equipment generates, uses and can radiate radio frequency energy and, if not installed and used in accordance with the instructions, may cause harmful interference to radio communications. However, there is no guarantee that interference will not occur in a particular installation. If this equipment does cause harmful interference to radio or television reception, which can be determined by turning the equipment off and on, the user is encouraged to try to correct the interference by one or more of the following measures:

--Reorient or relocate the receiving antenna.

--Increase the separation between the equipment and receiver

--Connect the equipment into an outlet on a circuit different from that to which the receiver is connected.

--Consult the dealer or an experienced radio/TV technician for help.

Please note changes or modifications not expressly approved by the party responsible for compliance could void the user's authority to operate the equipment.

HKC-US  
3350 Players Club Parkway, Suite 225  
Memphis, TN 38125  
888-251-1003

## **PREPARATION**

---

Before beginning the assembly of this product, ensure that all parts are present. Compare all parts with the package contents list and hardware contents list. If any part is missing or damaged, do not attempt to assemble the product.

**Estimated Assembly Time:** 120 minutes

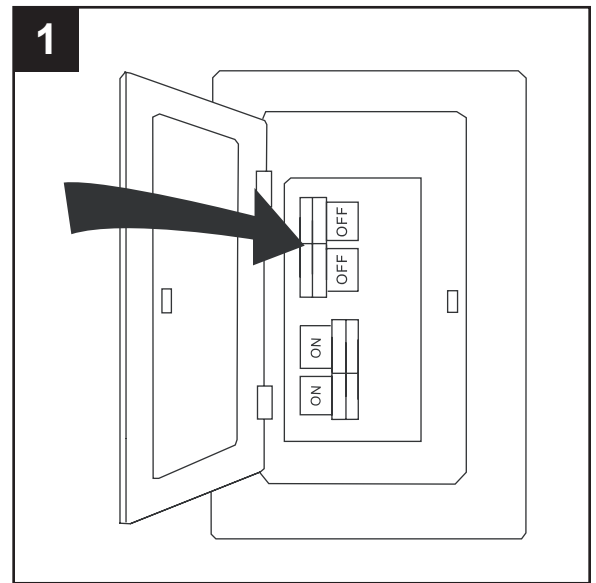
Tools Required for Assembly (not included): Electrical Tape, Phillips Screwdriver, Pliers, Safety Glasses, Step Ladder, Wire Cutters and Wire Strippers

Helpful Tools (not included): AC Tester Light, Tape Measure and Wiring Handbook

## INITIAL INSTALLATION

1. Turn off the circuit breakers and the wall switch to the fan supply line leads.

**⚠ DANGER:** Failure to disconnect the power supply prior to installation may result in serious injury or death.



2. Determine the mounting method to use.

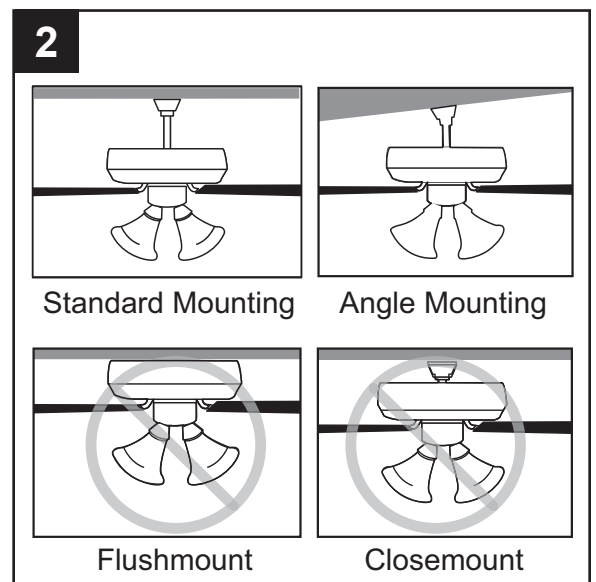
**Standard Mounting** is best suited for ceilings 8 ft. or higher. For taller ceilings you may want to use a longer downrod (not included).

**Angle Mounting** is best suited for angled or vaulted ceilings. A longer downrod is sometimes necessary to ensure proper blade clearance.

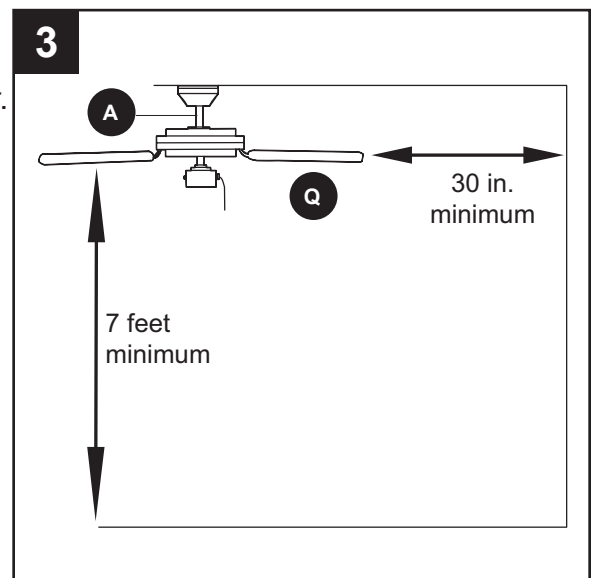
**Important:** If using the angle mount, check to ensure the ceiling angle is not steeper than 16°.

**Flushmount** is not available for this item.

**Closemount** is not available for this item.

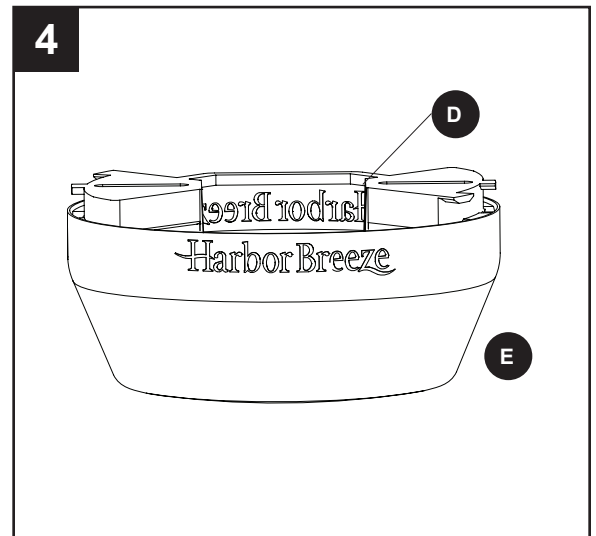


3. Ensure the blades (Q) will be at least 30 in. from any obstructions. Also check the downrod (A) length to ensure the blades (Q) will be at least 7 ft. above the floor.



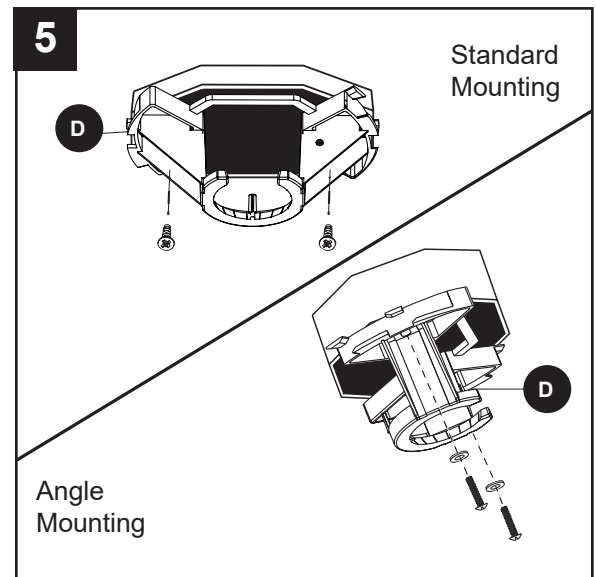
## INITIAL INSTALLATION

4. Firmly hold canopy (E) while twisting the mounting bracket (D) counterclockwise to remove.

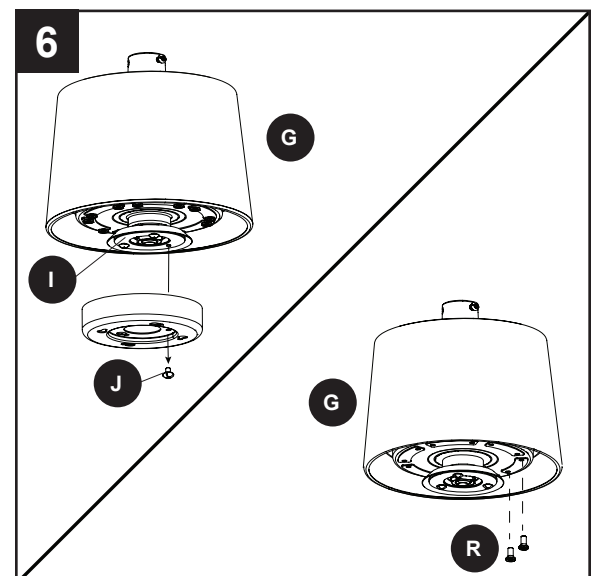


5. Attach mounting bracket (D) to outlet box (not included) using screws and washers provided with the outlet box.

**CAUTION:** It is very important to use the proper hardware when installing the mounting bracket (D) as this will support the fan.



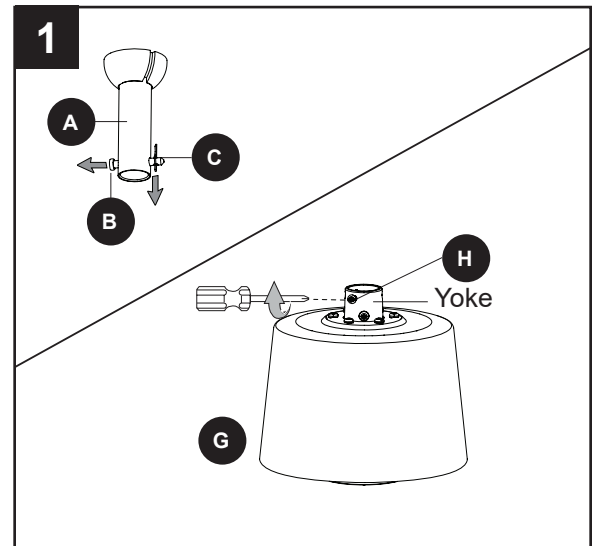
6. Remove one of the three fitter plate screws (J) preassembled to the fitter plate (I) from the round hole and loosen the other two but do not remove. Then, turn the orange shipping block counterclockwise and remove. Discard the shipping block but save the three fitter plate screws for later. Then, remove the 12 motor screws (R) from the underside of the motor assembly (G) and save for blade arm (P) installation.



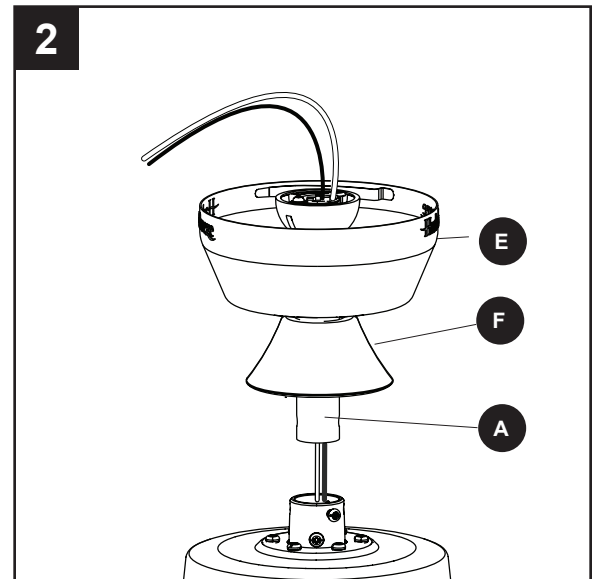


## STANDARD OR ANGLE MOUNTING INSTRUCTIONS

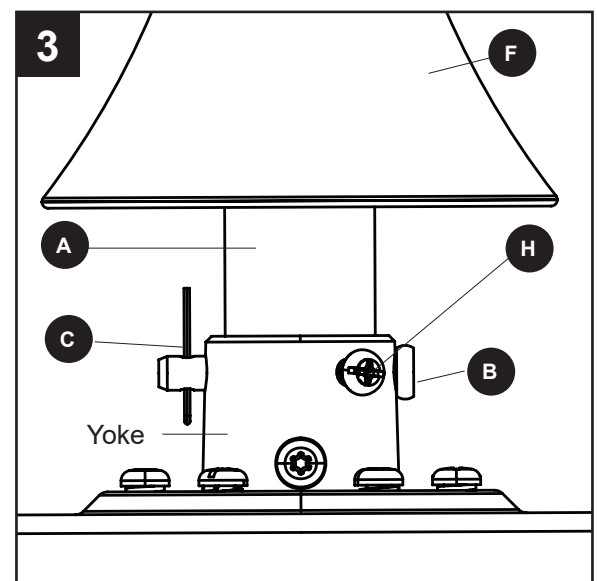
1. Remove the downrod clip (C) and downrod pin (B) from the downrod (A). Then partially loosen the set screws (H) in the yoke at the top of the motor assembly (G).



2. Insert the downrod (A) through the canopy (E) and yoke cover (F). Feed the wires from the fan through the downrod (A).



3. Slide the downrod (A) into the yoke, align the holes, then re-install the downrod pin (B) and downrod clip (C). Secure with set screws (H) and slide the yoke cover (F) down until it rests on top of the motor assembly (G).



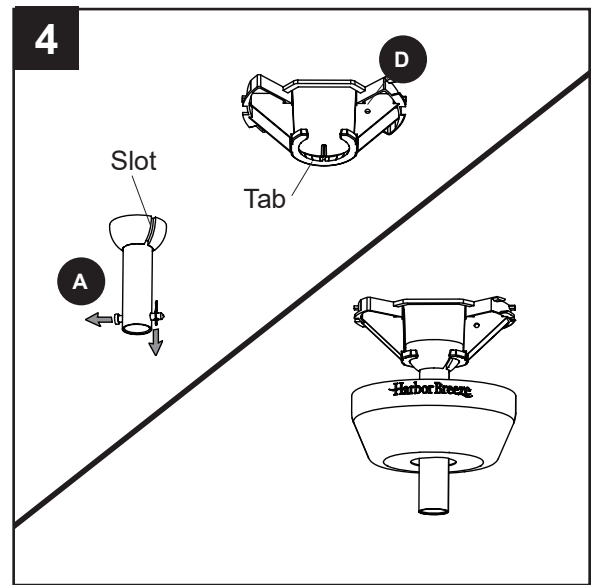
## STANDARD OR ANGLE MOUNTING INSTRUCTIONS

4. Install the ball end of the downrod (A) into the opening of the mounting bracket (D). Align a slot in the ball with the tab in the mounting bracket (D).

**Important:** The downrod (A) should not rotate in the mounting bracket (D) if installed properly.



**DANGER:** Failure to align a slot in the ball with the tab may cause the fan to wobble or fall, which could result in serious injury or death.



## WIRING

**WARNING:** To reduce the risk of fire, electrical shock or personal injury, wire connectors provided with this fan are designed to accept only one 12-gauge house wire and two lead wires from the fan. If your house wire is larger than 12-gauge and there is more than one house wire to connect to the two fan lead wires, consult an electrician for the proper size wire connectors to use. **CAUTION:** Be sure the outlet box is properly grounded or that a ground (green or bare) wire is present.

1. Use wire connectors and push-in connectors to connect fan wires to the supply wires from outlet box according to the wiring diagram and the following instructions:
  - Connect the Green wires from the downrod and the mounting bracket to the Bare/Green (ground) supply wire.
  - Lift the lever and then push the White (neutral) supply wire and white wire from the fan into the empty holes of the push-in connector and then lower the levers to secure wire.
  - Lift the lever and then push the Black (hot) supply wire and the black wire from the fan into the empty holes of the push-in connector and then lower the levers to secure wire.

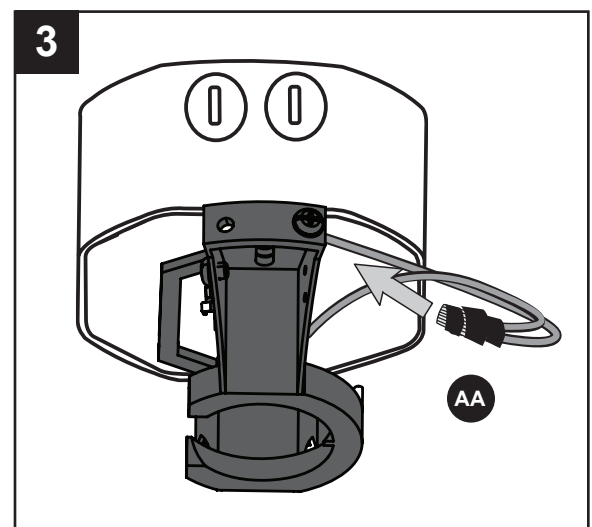
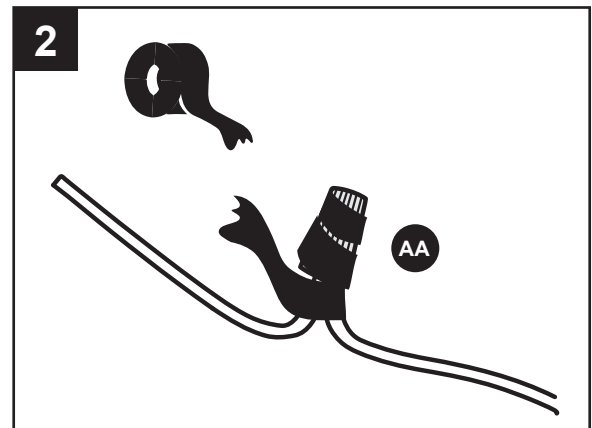
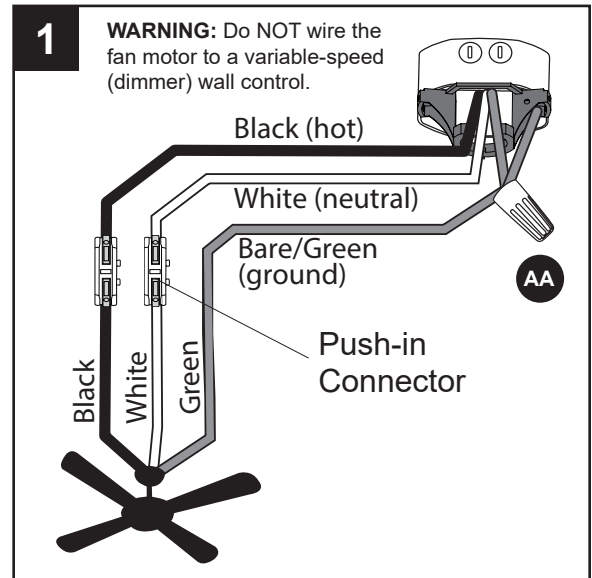
**⚠ WARNING:** If household supply wires are different colors than referred to above, a professional electrician should determine proper wiring.

### Hardware Used

<b>AA</b> Wire Connector		x 1
<b>FF</b> Push-In Connector		x 2

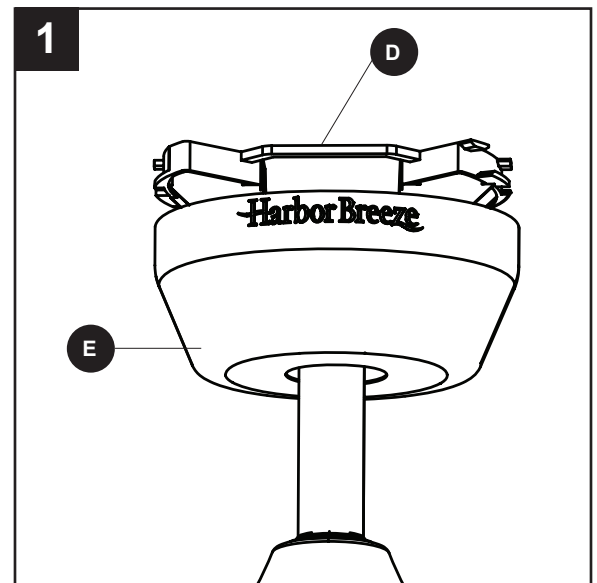
2. Wrap electrical tape (not included) around each individual wire connector (AA) down to the wire.
3. Turn the spliced/taped wires upward and gently push the wires and wire connectors (AA) into the outlet box.

**⚠ WARNING:** Ensure no bare wire strands are visible after making connections. Place Green and White wire connections on opposite sides of outlet box from the Black.



## FINAL INSTALLATION

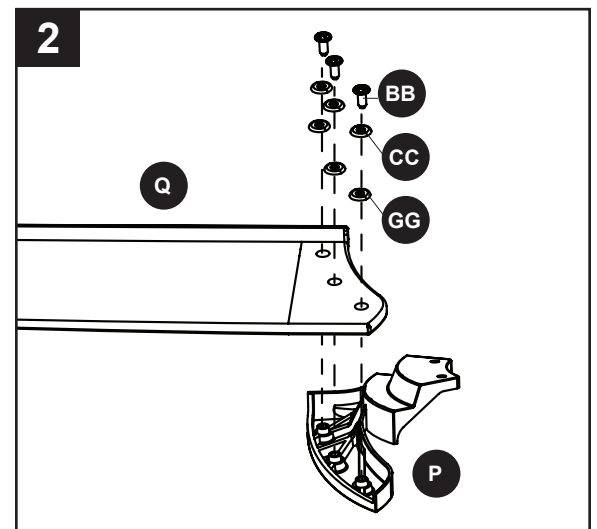
1. Lift the canopy (E) over the mounting bracket (D) and rotate clockwise until secure.



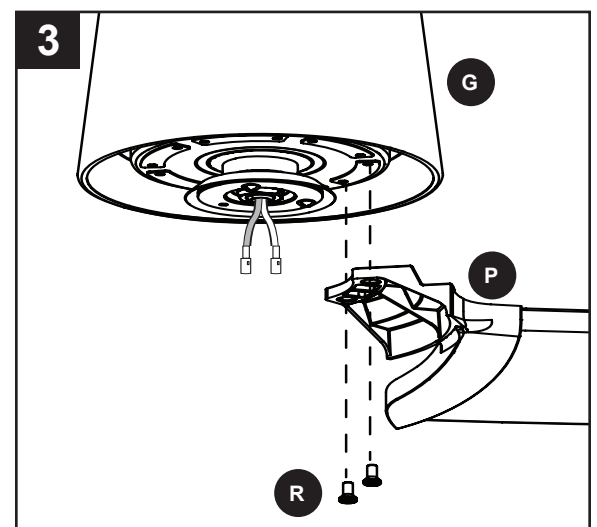
2. Insert the blade screws (BB) along with the blade washers (CC) and rubber washers (GG) through the blade (Q) and into the blade arm (P). Tighten each blade screw (BB) with a Phillips screwdriver (not included), starting with the one in the middle. Repeat this step for the remaining blades (Q) and blade arms (P).

### Hardware Used

<b>BB</b>	Blade Screw		x 18
<b>CC</b>	Blade Washer		x 18
<b>GG</b>	Rubber Washer		x 18

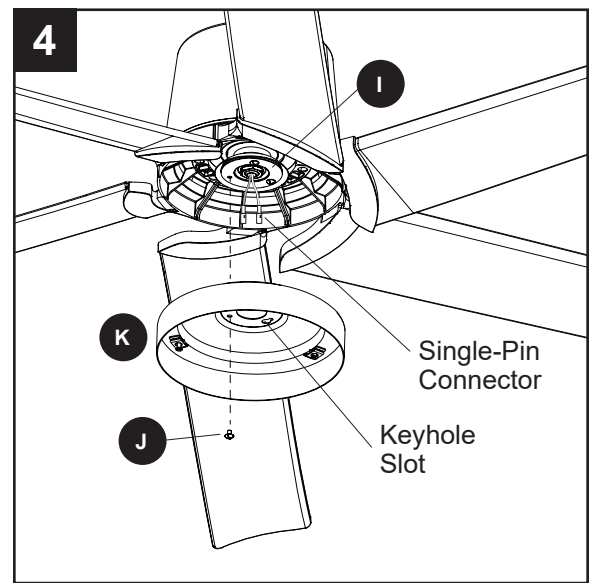


3. Install the blade arm (P) to the underside of the motor assembly (G) with previously removed motor screws (R). Tighten each blade arm (P) completely before moving to the next.

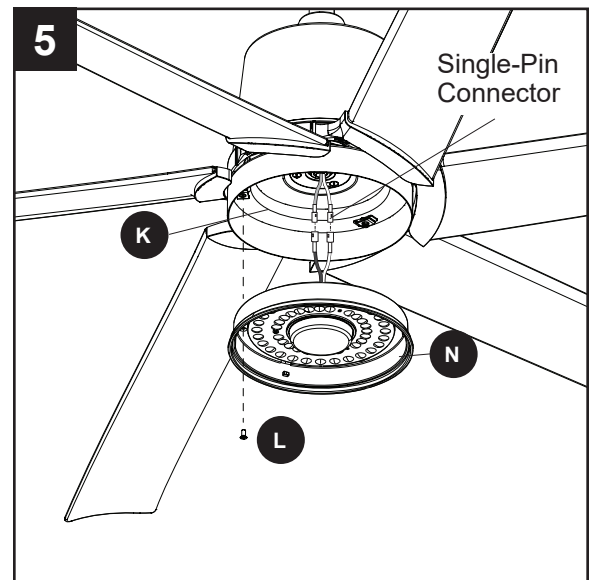


## FINAL INSTALLATION

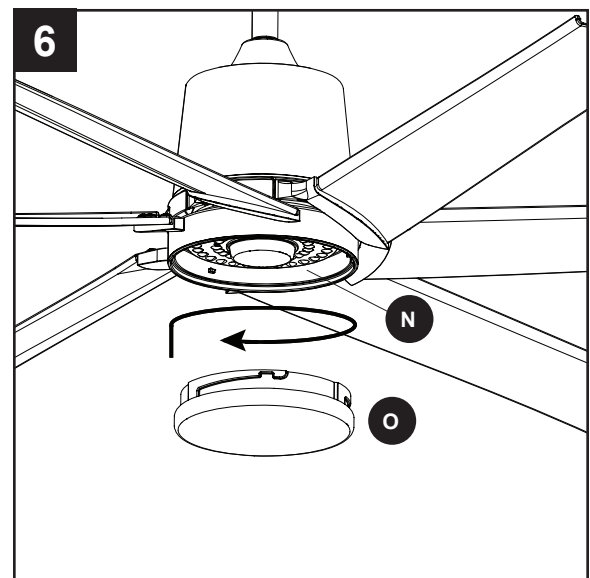
4. Remove one of the three fitter plate screws (J) preassembled to the fitter plate (I) and loosen the other two but do not remove. Feed the single-pin connectors through the center hole in the light pan (K). Align the keyhole slots in the light pan (K) with the loosened screws (J) in the fitter plate (I). Turn light pan (K) clockwise and replace the previously removed fitter plate screw (J). Tighten all screws.



5. Remove one of the three light pan screws (L) from the light pan (K) and loosen the other two but do not remove. Connect the single-pin connector from the light pan (K) to the single-pin connector from the light kit (N) -- blue to black and white to white. Lift the two keyhole slots in the light kit (N) over the two loosened light pan screws (L) and turn in a clockwise direction. Then, use the previously removed light pan screw (L) to secure the light kit (N) to the light pan (K). Tighten all screws.



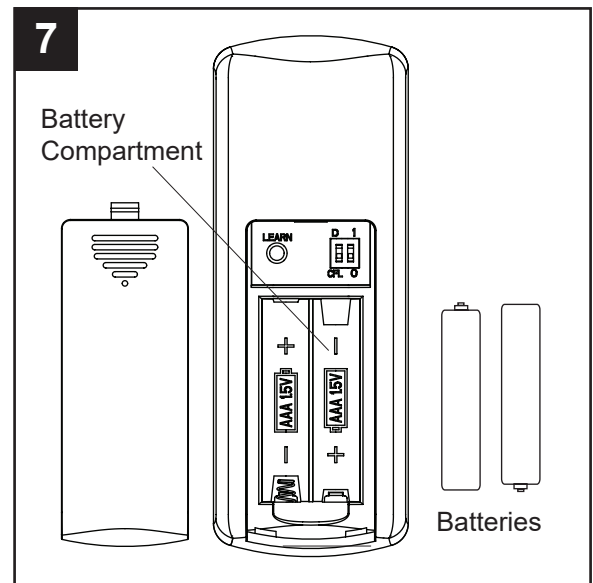
6. Attach the glass bowl (O) to the light kit (N) by twisting the glass bowl (O) firmly in a clockwise direction until it is secure. **CAUTION:** Avoid cross-threading the glass (O) during installation. Improper installation could cause the glass bowl (O) to be difficult to remove or fall, which could cause serious injury.



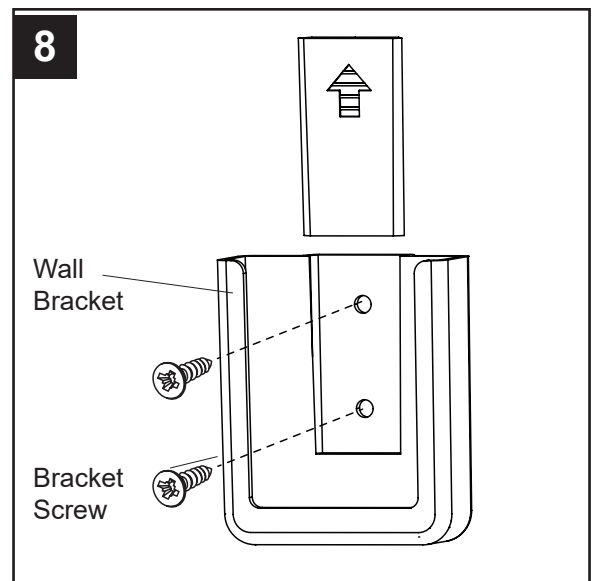
## FINAL INSTALLATION

7. Use a flat-head screwdriver, if necessary, to remove the battery cover from the back of the remote found in remote pack (M). Insert the battery into the remote; ensure polarity of battery matches the polarity indicated in the battery compartment -- positive (+) to positive (+) and negative (-) to negative (-). Replace the back cover and press the fan on/off button on the remote to ensure the LED indicator illuminates and the remote turns on the fan.

**Note:** If remote doesn't turn on the fan, see TROUBLESHOOTING (page 17).

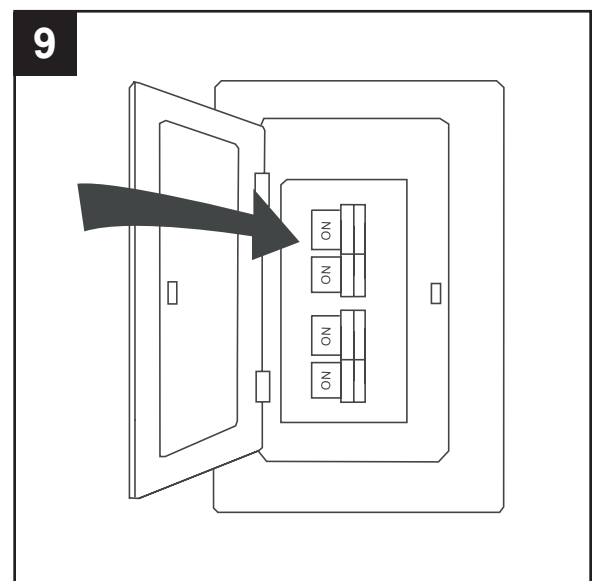


8. The remote control from remote pack (M) comes equipped with a wall bracket. If you wish to install the wall bracket, remove the small plate to expose the screw holes. Insert wall brackets screws through holes and into wall, then cover with the previously removed small plate. The remote from remote pack (M) can be stored in the mounting bracket for easy access.



9. Turn on the circuit breakers and the wall switch to the fan supply line leads.

Assembly is complete.



## OPERATING INSTRUCTIONS

1. To operate the fan using remote control, press and release the following buttons:

**LED Indicator** - Indicates the six speeds of the fan. It should illuminate when any remote button is pressed. If not, replace the 1.5 V, AAA batteries.

**Fan Power button has three options:**

(\*/⏻) - Turns the fan off or turns on fan at previously selected speed.

(+) - Increase fan speed

(-) - Lower fan speed

**Sleep Timers** - Turn off fan after 2 hours (2hr), 4 hours (4hr), or 8 hours (8hr). Press (\*/⏻) button to deactivate.

**Reverse Switch** - In warmer weather, push the reverse switch to the left for downward airflow creating a wind chill effect. In cooler weather, push the reverse switch to the right for upward airflow that can help move stagnant, hot air off the ceiling area.

**Light Delay** - Delays turning off light for one minute which allows safe exit from room. Light blinks to confirm function is active. Press Light Control button to deactivate and turn the light off.

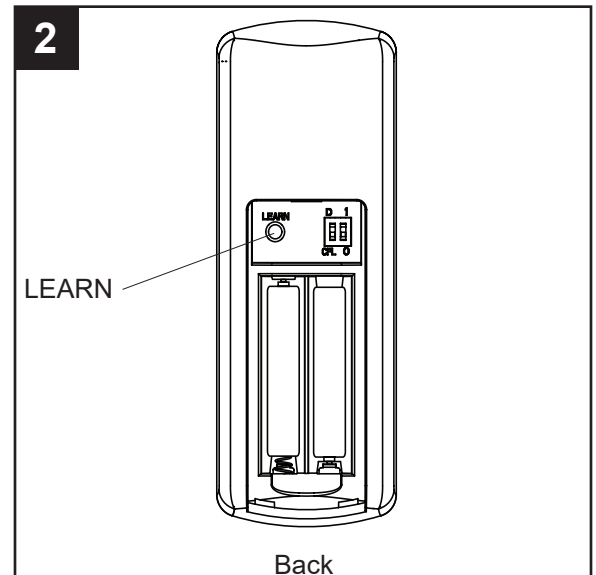
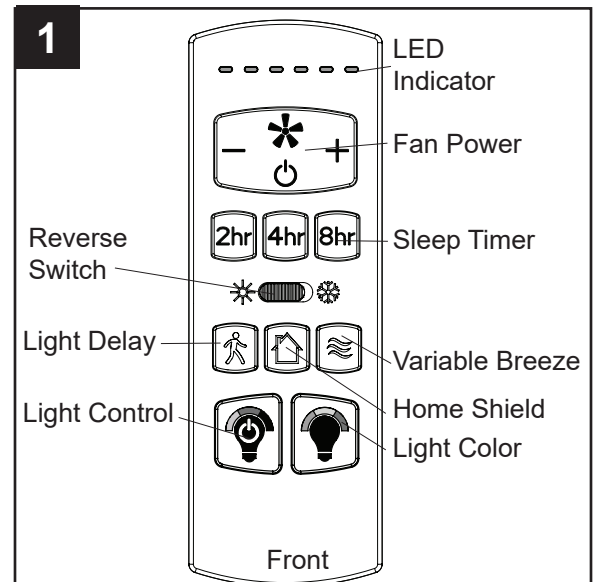
**Home Shield™** - Simulates occupancy while away from home. Fan remains off and the light randomly turns on for a minimum of five minutes and a maximum of 20 minutes. The light remains off for 60 minutes between events. Press and hold button to activate. Light will blink to confirm Home Shield is active. Press any button to cancel.

**Variable Breeze** - Simulates a natural breeze, as if you were outside.

**Light Control** - Tap button to turn the light off and on. Press and hold button to dim or brighten the lights.

**Light Color** - Press and hold button to cycle through the color temperatures from 2200K (warm white) to 6500K (daylight).

2. **LEARN** - Syncs remote control (M) to receiver (see troubleshooting for instructions).



## CARE AND MAINTENANCE

At least twice each year, lower the canopy to check the downrod assembly, and then tighten all screws on the fan. Clean the motor housing with only a soft brush or lint-free cloth to avoid scratching the finish. Clean the blades with a lint-free cloth.

Total fixture wattage is 28 watts; do not attempt to replace LED.

Battery Replacement: Use 1.5 V, AAA alkaline batteries. **WARNING:** Keep batteries out of reach of children. May be fatal if swallowed. In the event that a battery is swallowed, immediately consult a doctor. Non-rechargeable batteries are not to be recharged. Do not mix different types of batteries such as alkaline, carbon-zinc, or rechargeable batteries. Do not mix old and new batteries. Batteries are to be inserted with the correct polarity. Exhausted batteries are to be removed from the product. Do not dispose of batteries in fire, as they may explode or leak.

**Important:** Shut off the main power supply before you begin any maintenance tasks. Do not use water or a damp cloth to clean the ceiling fan.

## TROUBLESHOOTING

PROBLEM	POSSIBLE CAUSE	CORRECTIVE ACTION
The fan does not move.	<ol style="list-style-type: none"><li>1. The power is off, or the fuse is blown.</li><li>2. There is a faulty wire connection.</li><li>3. The plugs are not connected properly.</li><li>4. The reverse switch is not completely engaged.</li></ol>	<ol style="list-style-type: none"><li>1. Turn the power on or check the fuse.</li><li>2. Turn the power off. Loosen the canopy and check all connections.</li><li>3. Check that the connectors from the light kit fitter and fan are connected properly.</li><li>4. Push the reverse switch completely to the left or right.</li></ol>
The fan is noisy.	<ol style="list-style-type: none"><li>1. The blades are loose.</li><li>2. There is a cracked blade.</li><li>3. The wall control is not compatible with the fan.</li><li>4. The outlet box is not secure.</li><li>5. The mounting bracket is not secure.</li></ol>	<ol style="list-style-type: none"><li>1. Check and tighten all screws that hold the fan blades to the blade arms and the motor.</li><li>2. Replace the cracked blade.</li><li>3. Do not use a full range dimmer switch to control the fan speed.</li><li>4. Ensure the outlet box is secured to the building structure.</li><li>5. Ensure the mounting bracket is secured to the outlet box and that the screws are tight.</li></ol>



## TROUBLESHOOTING

PROBLEM	POSSIBLE CAUSE	CORRECTIVE ACTION
There is excessive wobbling.	<ol style="list-style-type: none"> <li>1. The blades and/or blade arms are loose.</li> <li>2. The blades are unbalanced.</li> <li>3. The fan mounting is not secure.</li> <li>4. The fan is too close to the vaulted ceiling.</li> <li>5. The set screw on the motor housing yoke is loose.</li> </ol>	<ol style="list-style-type: none"> <li>1. Check and tighten all screws that hold the fan blades to the blade arms and the blade arms to the motor.</li> <li>2. Switch one blade with a blade from the opposite side. Or balance the fan using a blade balancing kit (sold separately).</li> <li>3. Turn off the power. Loosen the canopy and verify that the mounting bracket is secure to the electrical outlet box. The bracket must be flush without movement against the outlet box.</li> <li>4. Use a longer downrod (sold separately) or move the fan to another location.</li> <li>5. Lift up the yoke cover and tighten the set screw to the yoke until secure.</li> </ol>
The fan operates correctly, but the lights are not working.	<ol style="list-style-type: none"> <li>1. The light kit wire plugs are not connected properly.</li> <li>2. There is a faulty wire connection.</li> </ol>	<ol style="list-style-type: none"> <li>1. Ensure that the single-pin connectors from the light kit are connected properly.</li> <li>2. Turn the power off and check all connections at the ceiling outlet box.</li> </ol>
Remote control does not work.	<ol style="list-style-type: none"> <li>1. Power surge may have cleared memory and remote needs to be re-synced to the receiver.</li> <li>2. Battery in remote control needs to be replaced.</li> <li>3. Interference from another remote.</li> </ol>	<ol style="list-style-type: none"> <li>1. To re-sync wall control to the fan - Switch the power to the fan off and back on again. Within 30 seconds, press and hold the "LEARN" button, located in the battery compartment) for 5 seconds. Fan will turn on and light will blink. This confirms the syncing process is successful.</li> <li>2. Insert new AAA batteries in battery compartment of the wall control.</li> <li>3. If there are several fans in close proximity, turn power off to other fans and re-sync the remote (see Corrective Action 1 above).</li> </ol>

## LIMITED LIFETIME WARRANTY

---

Set forth below, the manufacturer warrants the fan motor for this ceiling fan to be free from defects in workmanship and material for the life of the product. Also, subject to the limitations below, the manufacturer warrants all ceiling fan parts ("ceiling fan parts" excludes the motor and parts made in whole or in part with glass) to be free from defects in workmanship and material for a period of one year after the date of purchase by the original purchaser at retail.

All claims must be made by the original purchaser from an authorized dealer, whether such purchaser purchased the product through a store or contractor. Ceiling fan part defects must be reported within the first year from the date of purchase. Parts made in whole or in part with glass and the finishes of metal and other surfaces are not warranted.

Purchasers are responsible for all costs of removing and reinstalling the product. Any damage to any part caused by ordinary wear and tear, accident, misuse, or improper installation, is not covered by this warranty. The manufacturer assumes no responsibility whatsoever for fan installation. Any service performed by a non-licensed electrician will render the warranty invalid.

The manufacturer's sole responsibility shall be to repair or replace the motor, parts, or product within the terms stated above. The manufacturer shall not be liable for any loss or damage of any kind, including any incidental or consequential damages resulting directly or indirectly, from any breach of warranty, express or implied, or any other failure of this product. Some states do not allow the exclusion or limitation of incidental or consequential damages so this limitation may not apply to you.

If the original purchaser ceases to own the fan, this warranty is voided.

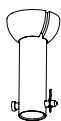
Should the purchaser encounter a problem with your fan related to defects in workmanship or materials within the warranty period associated with the defective part, the manufacturer agrees to replace the defective part without charge, or at its option, to replace the ceiling fan with a comparable or superior model.

The manufacturer's warranties are limited to the written warranties set out in this ceiling fan limited lifetime warranty. All other express and implied warranties, including, without limitation, the implied warranty of fitness for a particular purpose and the implied warranty of merchantability is disclaimed. Some states do not allow the disclaimer of implied warranties, so this disclaimer may not apply to you.

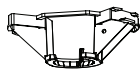
## REPLACEMENT PARTS LIST

For replacement parts, call the customer service department at **888-251-1003**, 8 a.m. - 8 p.m., EST, Monday - Sunday. You could also contact us at **ascs@lowes.com**.

PART	DESCRIPTION	#5971304	#5979051	COVERED UNDER WARRANTY
A	Downrod	4L000016490	4L000018590	YES - 1 year
D	Mounting Bracket	4L000018280	4L000018280	YES - 1 year
E	Canopy	4L000018410	4L000018420	YES - 1 year
F	Yoke Cover	4L000016540	4L000011600	YES - 1 year
K	Light Pan	4L000018600	4L000018610	YES - 1 year
M	Remote Pack	4L000018580	4L000018580	YES - 1 year
N	Light Kit	4L000018620	4L000018630	YES - 1 year
O	Glass Bowl	4A168050001	4A168050001	NO
P	Blade Arm (x6)	4L074900001	4L074900002	YES - 1 year
Q	Blade (x6)	4L086770001	4L086770002	YES - 1 year
HW	Hardware Kit	4L000018640	4L000018650	NO



A



D



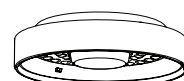
E



F



K



N



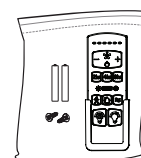
O



P



Q



M



HW