



**Accord®**  
36" x 36" Vikrell® shower with Aging in Place, center  
drain backerboards  
**72240106**



### Features

- 3-1/2" threshold
- Durable high-gloss finish
- Pivot snap-together modular design
- Geometric back-wall design
- Convenient shelves provide generous storage space
- Aging in Place backerboards

### Material

- Made from solid Vikrell® material for strength, durability, and lasting beauty

### Installation

- Alcove
- Caulk-free installation

### Recommended Products/Accessories

- 1500D-36 Framed pivot shower door
- 80001012 12" straight grab bar
- 80001018 18" straight grab bar
- 80001024 24" straight grab bar
- 80011032 32" straight grab bar
- 80001036 36" straight grab bar
- K-23726 Drain treatment
- K-23733 Vikrell® cleaner

### Included Components

- 72245106 36" Vikrell® shower end wall set with Aging in Place backerboards
- 72241100 36" x 36" Vikrell® shower base, center drain
- 72242100 36" Vikrell® shower back wall



### Codes/Standards

- CSA B45.5/IAPMO Z124
- ASTM E162
- ASTM E662
- HUD, UM Bulletin 73
- IAPMO Certification


### STERLING® Vikrell® or Acrylic Baths and Shower Bases Ten-Year Limited Warranty

See website for detailed warranty information.

### Available Colors/Finishes

*Color tiles intended for reference only.*

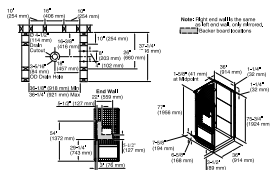
#### Color Code Description

	0	White
---	---	-------



**Accord®**

36" x 36" Vikrell® shower with Aging in Place, center  
drain backerboards  
**72240106**



### Technical Information

All product dimensions are nominal.

Drain location:	Center
Minimum flat for door:	3-1/4" (83 mm)
Maximum door height:	72" (1829 mm)
Maximum door width:	32-5/8" (829 mm)

### Notes

Install this product according to the installation instructions.

Studs should be positioned roughly as shown.

Double studding is recommended for pivot shower door installations.

Attach grab bars at the specified backerboard locations only.