

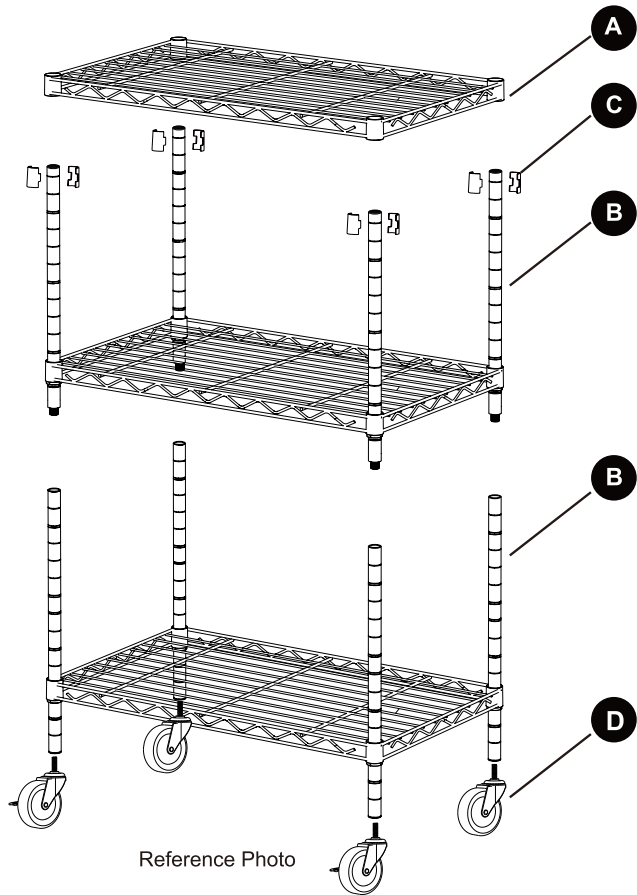
CARE AND MAINTENANCE

Never use abrasive or acid-based cleaners on the shelf rack.
Clean shelves and rods with a solution of mild detergent and water. Use a soft cloth or sponge to wipe parts. Rinse and dry thoroughly. Keep surfaces dry and clean for a longer lasting finish.

NOTICE

Please read and understand these instructions before attempting to assemble, operate or install the product.

- Two adults required for a safe assembly.
- Do not allow children to climb or play in or around the shelves.
- Assemble on a soft surface, such as carpeting to avoid scratching the finish.



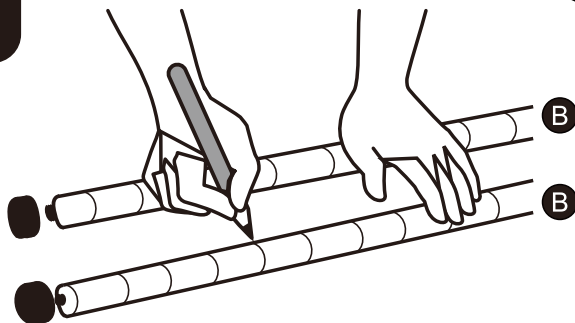
Part	Description	Picture
A	Shelves	
B	Poles	
C	Tapered sleeve	
D	Casters	

PREPARATION

- 1.Before beginning assembly of product, make sure all parts are present. Compare parts with package contents list and hardware contents . If any part is missing or damaged, do not attempt to assemble the product.
- 2.Estimated Assembly Time: Approximately 15 - 25 minutes.
- 3.Helpful Tools (not included):Rubber Mallet.
- 4.Decide on the shelf location before beginning the assembly.Once the Product is assembled,it is very difficult to move a shelf without taking the entire assembly apart and starting over.
- 5.No Tools Required for Assembly.

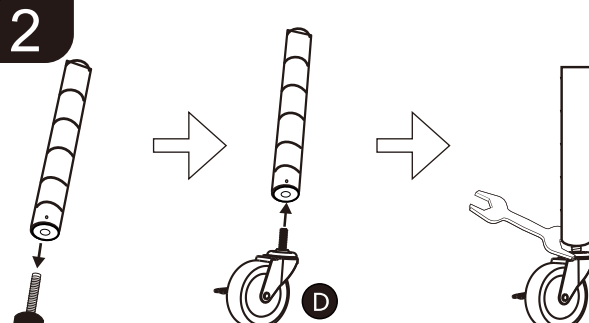
Assembly Instructions

1



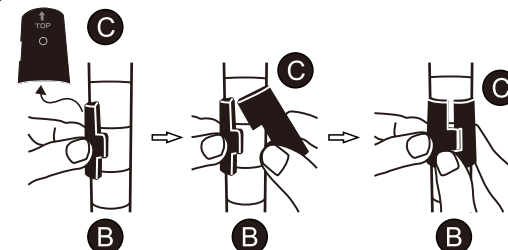
Use a pen to mark the height on the 4 Poles (B) with levelers. Be sure all poles are marked in the same location.

2



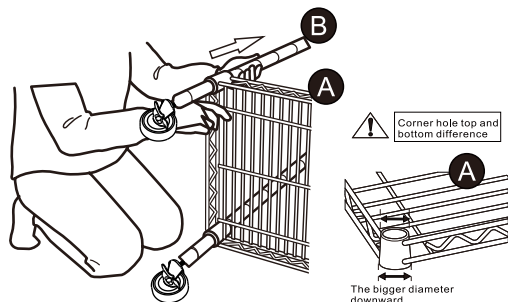
Turn the levelers out and replace them with the casters. Screw the casters (D) onto the threaded end of the lower poles (B). Tighten securely with the wrench.

3



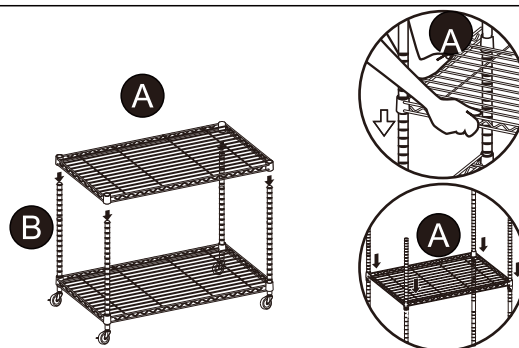
Attach 2xTapered sleeves (C) at the pen marks on the 4 Poles (B). Keep the arrows on the Tapered sleeves (C) pointed upwards.

4



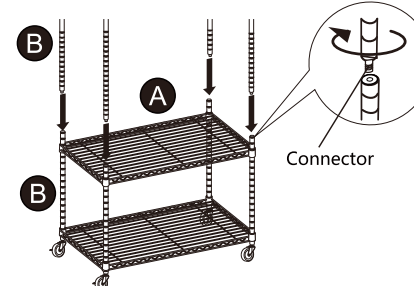
Place the Poles (B) with Casters through the corner holes of 1 Shelf (A). Fit the shelf carefully and securely over the Tapered sleeves (C).

5



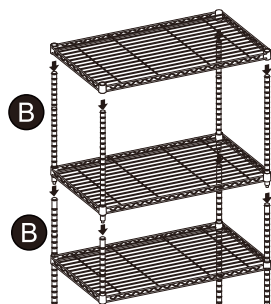
Install the second Shelf (A) following steps 2-3.

6



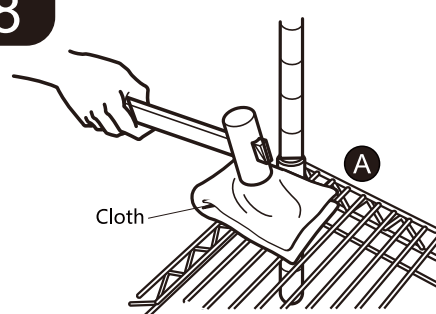
If it is 2-section or 3-section pole
Screw the Pole (B) onto the threaded ends of the installed Poles (B). Be sure the connection is secure & tight.

7



Install remaining Shelves (A) following steps 2-3.

8



Use the rubber mallet to tap the shelves into place for a secure fit. Use a soft cloth between the shelf & mallet to prevent damage to the shelf.

9



3-Tier wire shelving 4-Tier wire shelving 5-Tier wire shelving 6-Tier wire shelving

Assembly is Completed.
See the assembly photo with different tier shelves for your reference.