

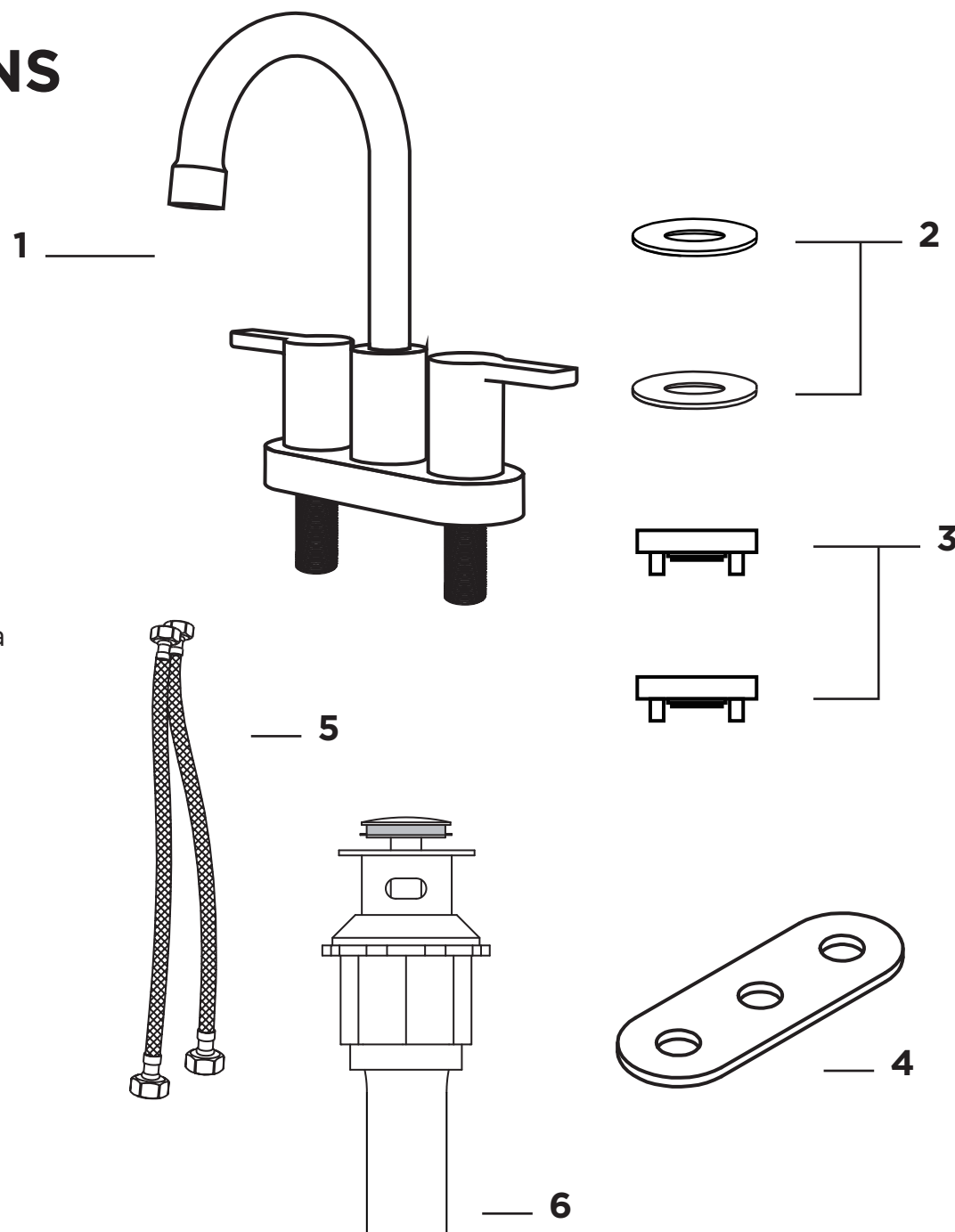
INSTALLATION INSTRUCTIONS

Included In the Package:

1. Bathroom Faucet
2. Rubber Washer x 2
3. Plastic Fixing Nut x 2
4. Plastic Plate
5. Hot and Cold Water Supply Hoses
6. Pop Up Drain

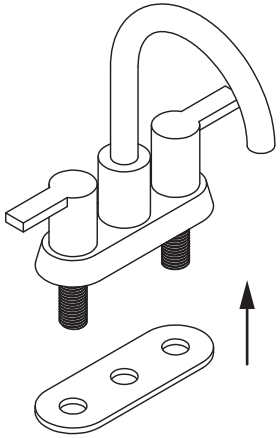
Before Installation:

- Turn off the water supply valves. Clean the mounting area of the sink.
- Recommended width of mounting area is 102mm (4") measured between centers of outside mount holes.
- Diameter of mount holes must be between 25.4mm-38mm (1.00"-1.50").
- Max countertop thickness is 30mm (1.20")
- Water pressure Min 0.05MPa (7 psi) / Max 0.75MPa (109 psi)
- Water temp Min $\geq 20^{\circ}\text{C}$ (68°F) / Max $\leq 85^{\circ}\text{C}$ (185°F)

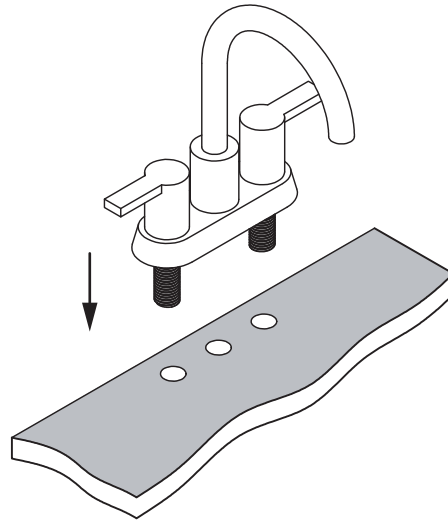


Installation Steps:

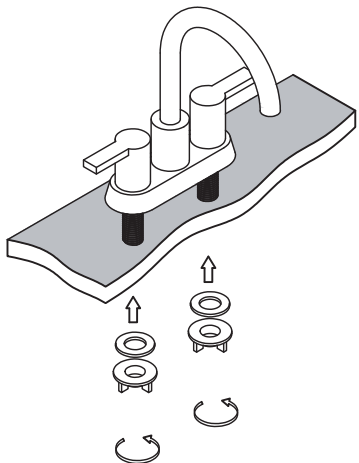
- 1.** Place the plastic plate at the bottom of the tap.



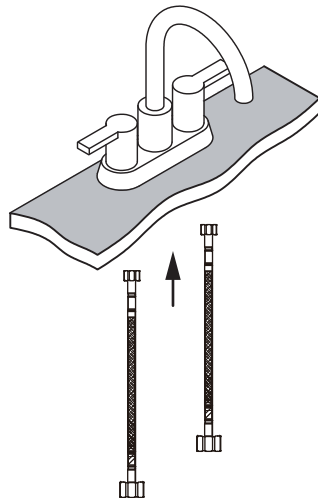
- 2.** Put the faucet in the sink.



- 3.** Place the rubber washer and plastic fixing nut in the bottom of the cold and hot water handles in turn.



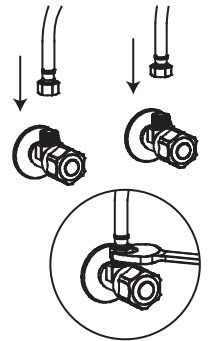
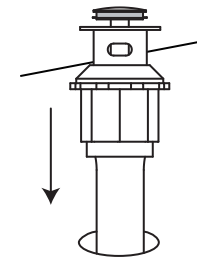
- 4.** Connect the top of the hot and cold water pipes to the bottom of the hot and cold handles.



- 5. Notice:** Open the water valve at this time, to drain out the sewage in the water pipe for 15 seconds and then close it.

- 6.** Screw the water inlet hose nut onto the water valve and tighten it with a wrench. Finally, open the water valve and enjoy your faucet. (If your valve thread doesn't match, please contact the seller to get the thread adapter.)

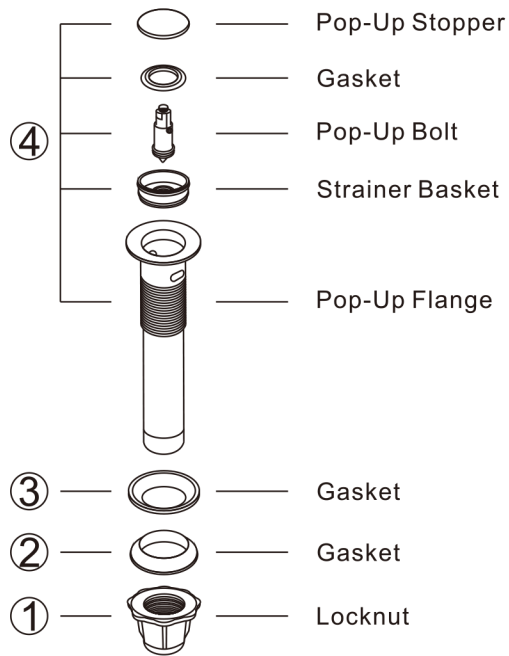
- 7.** Install the pop-up sink drain stopper.



Maintenance:

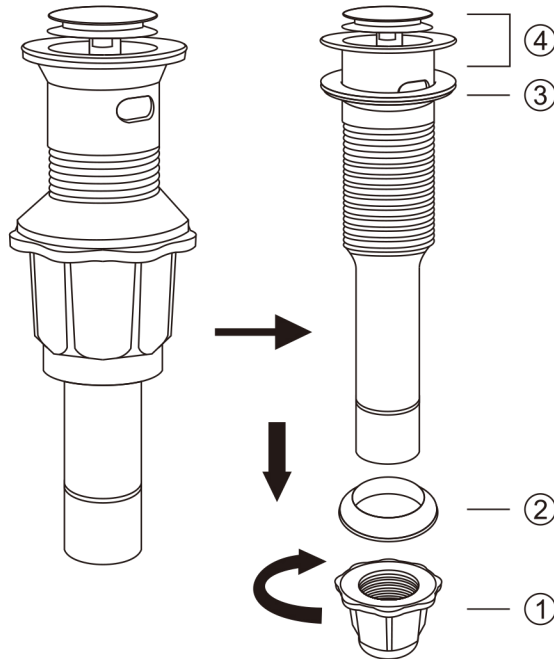
- Always operate the faucet gently to ensure years of use.
- To maintain the finish, always blot dry any water on the faucet surface. Clean with a damp non-abrasive sponge and wipe dry with a clean soft cloth.
- Although the finish is very durable, certain cleaners can damage it. DO NOT use detergent powder, polishing powder, a nylon brush, or anything that may scratch the finish.
- DO NOT use acidic cleaners on the faucet.
- If air temperature falls below freezing (0°C / 32°F), run the faucet to prevent freezing.
- Shut off water supply valve when not in use for long periods.
- We reserve the right to make revisions to product design without notice.

PRODUCT INTRODUCTION



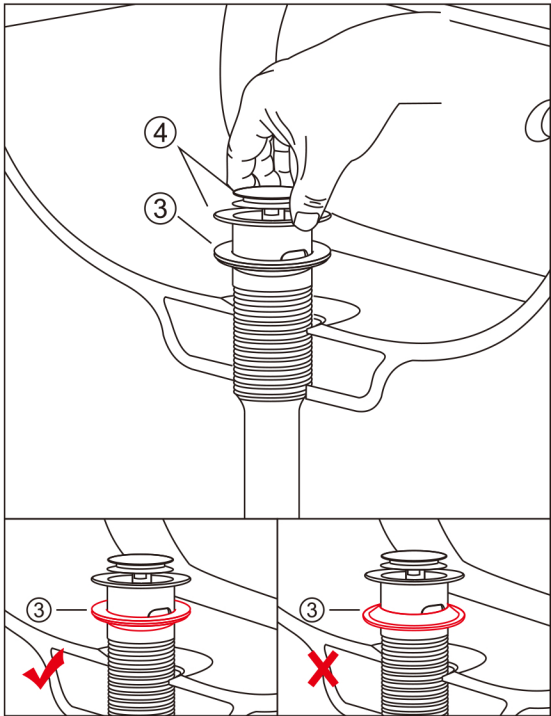
-01-

1.Remove locknut ①,gasket ② from the drain body④.



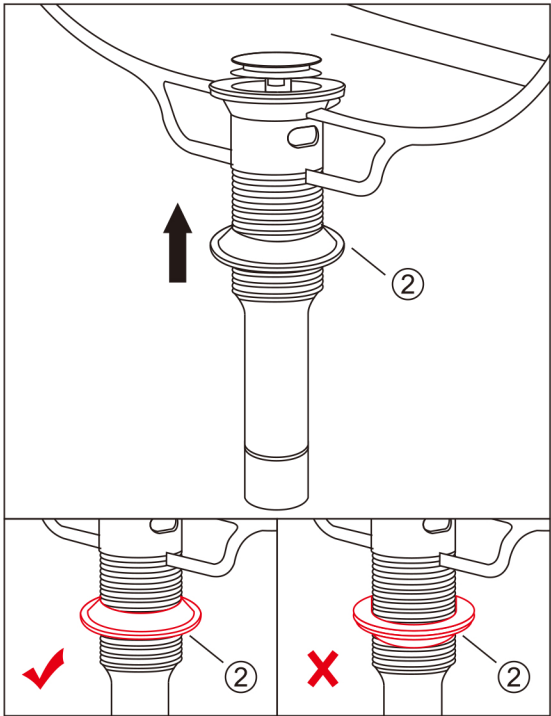
-02-

2. Install drain body④,with gasket③ attached, into the drain hole.



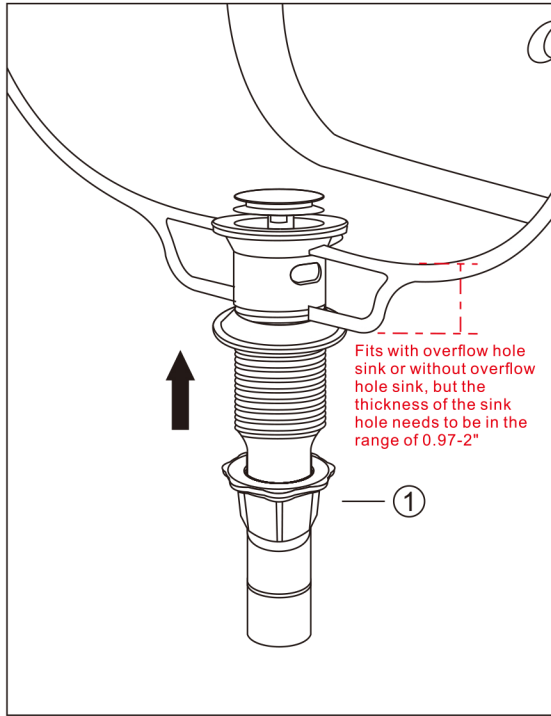
-03-

3. Install gasket ② attached, into the drain hole under the sink.

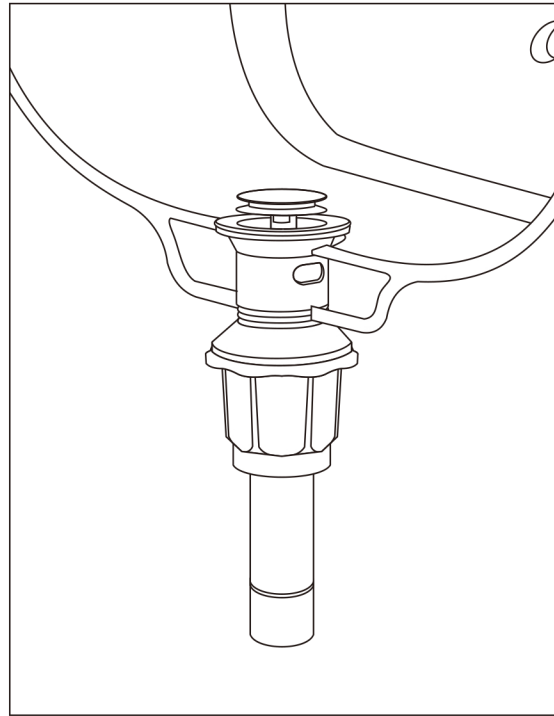


-04-

4. Fasten the locknut to the drain and tighten.



-05-



-06-

TROUBLE SHOOTING

If the drain does not work properly, please take the following corrective actions:

1.PROBLEM
Pop-up stopper sticks and is hard to push down.
CAUSE
The pop-up bolt is ammed.
ACTION
Contact us to replace the pop-up bolt.

2.PROBLEM
The strainer basket and the pop-up stopper aren't straight.
CAUSE
The package may have been damaged during transit.
ACTION
Try straightening the part or contact us for a how-to video guide.

3.PROBLEM
The drain is leaking underneath the sink.
CAUSE
The gasket doesn't seal strong enough.
ACTION
Adjust the gasket or seal around it with the silicone caulk.

4.PROBLEM
There's a leak between the gasket and the locknut.
CAUSE
The gasket doesn't seal strong enough.
ACTION
Remove the locknut and the gasket , then use plumbers tape or silicone caulk on the thread. Check that the gasket is right side up before putting it back on the gasket along with the locknut.

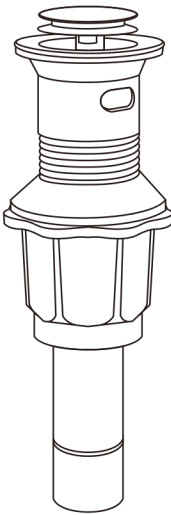
5.PROBLEM
Size is not compatible.
CAUSE
This is made for a standard 13/4" drain opening. It fits sink hole with a diameter of 1.55" to 1.9" and sink with a thickness of 1-2".
ACTION
Measure and check the size of your drain before installing. If it's not compatible, put all the items back in the box and return the product to Amazon or contact us.

6.PROBLEM
Drains slowly or water is unable to drain.
CAUSE
Debris is blocking the drain.
ACTION
Check and clean the drain.

-07-



SINK DRAIN INSTALLATION GUIDE



lowes@forious.com