

MH-TB-841



ASSEMBLY INSTRUCTIONS

Do not throw away the packaging material until the assembly is complete. To protect finish, assemble this item on a soft surface such as a cardboard or a carpet.

**While assembling the product, first tighten the screws up to 50%.
Once all parts are in place, only then fully tighten the screws!**

CARE INSTRUCTIONS

Wipe only with a soft & dry cloth.

To protect finish, avoid the use of abraasive cleaners.
Any liquid spilled on the furniture should be cleaned up immediately with a damp cloth.

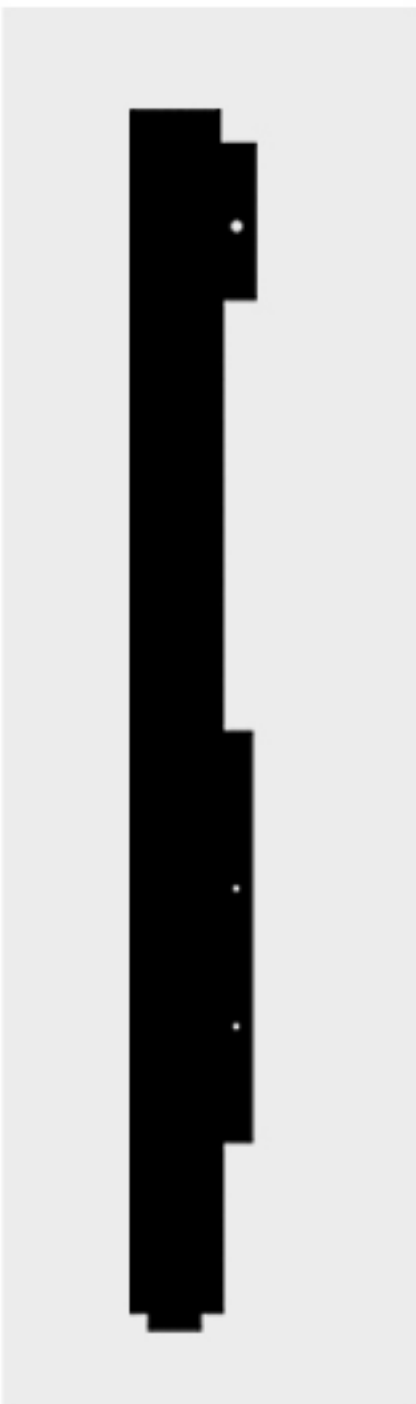
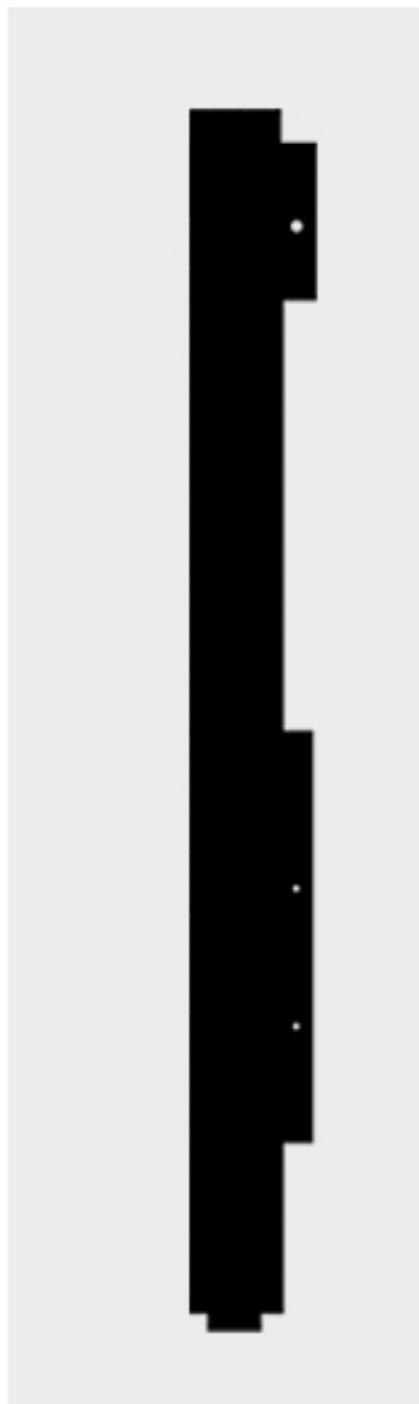
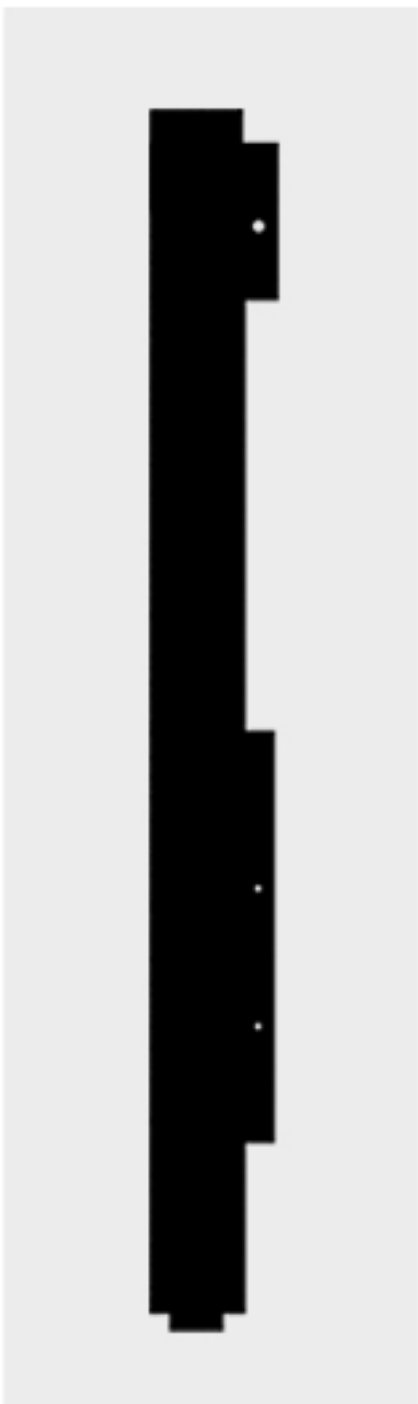
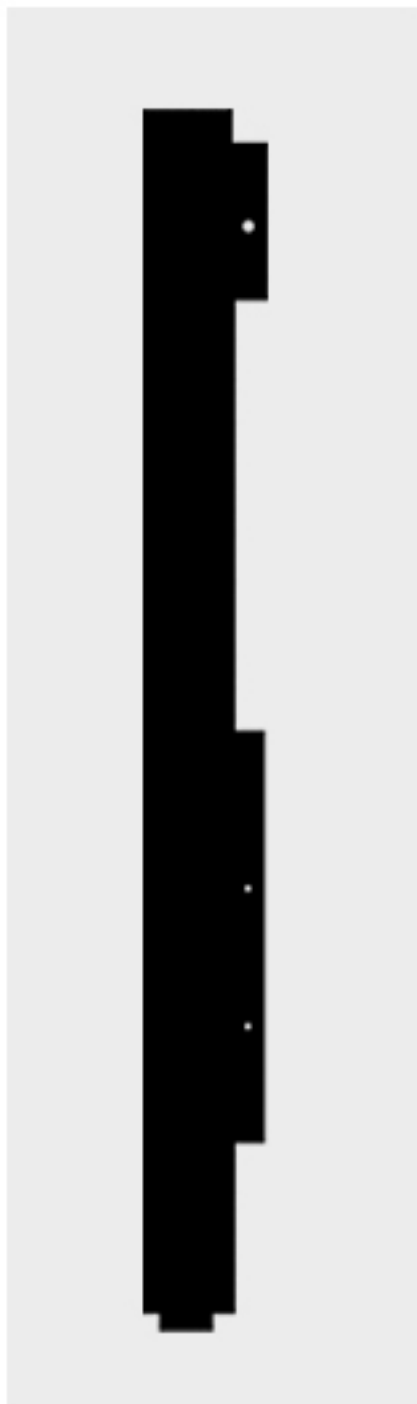
PRODUCT PARTS



A
WOODEN DRAWER

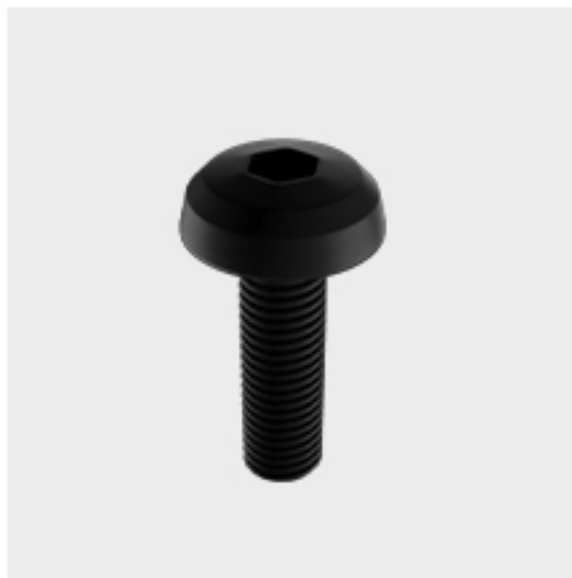


B
WOODEN TOP



C
LEGS

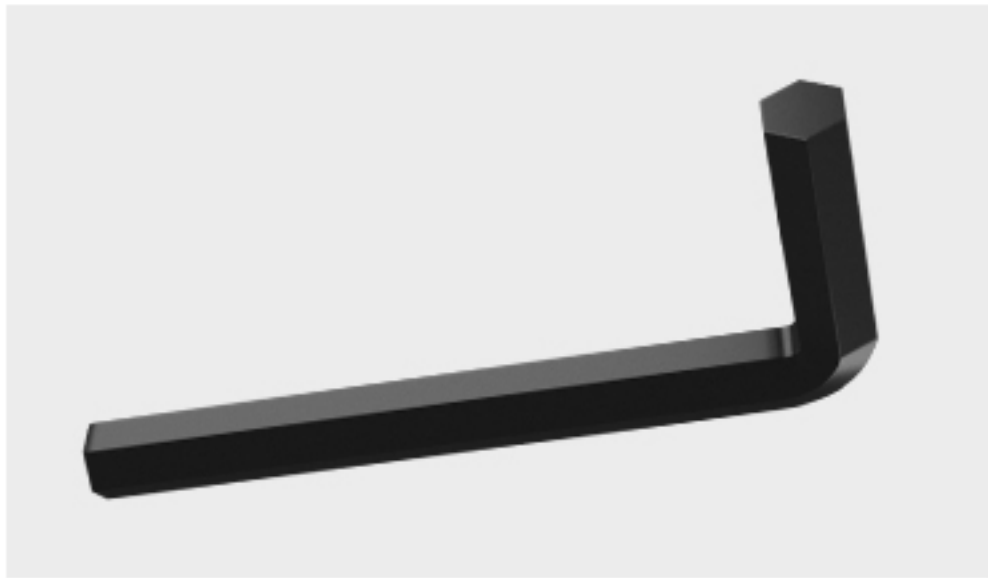
HARDWARE PROVIDED



D
HEXA SCREW
12X



E
WASHER
12X

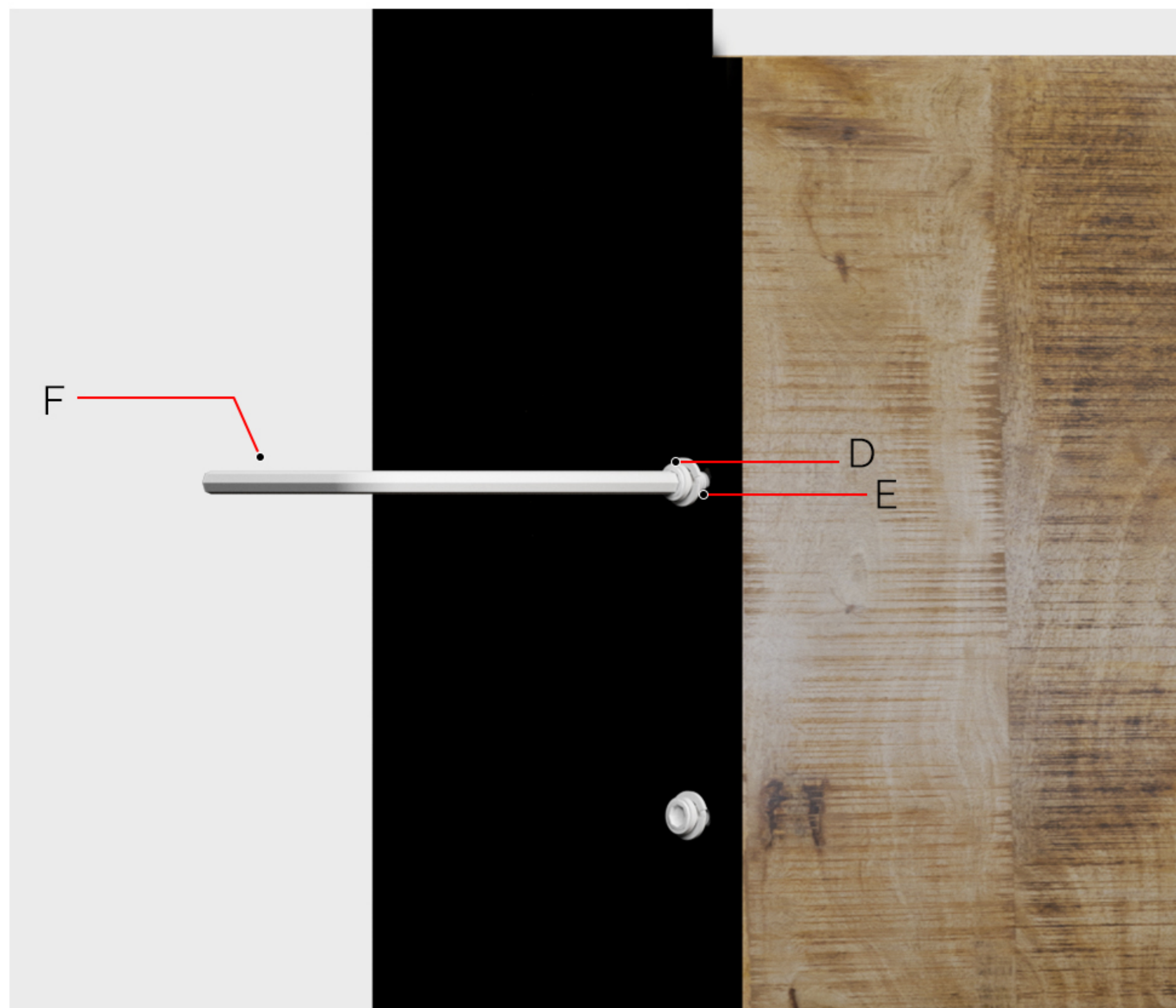
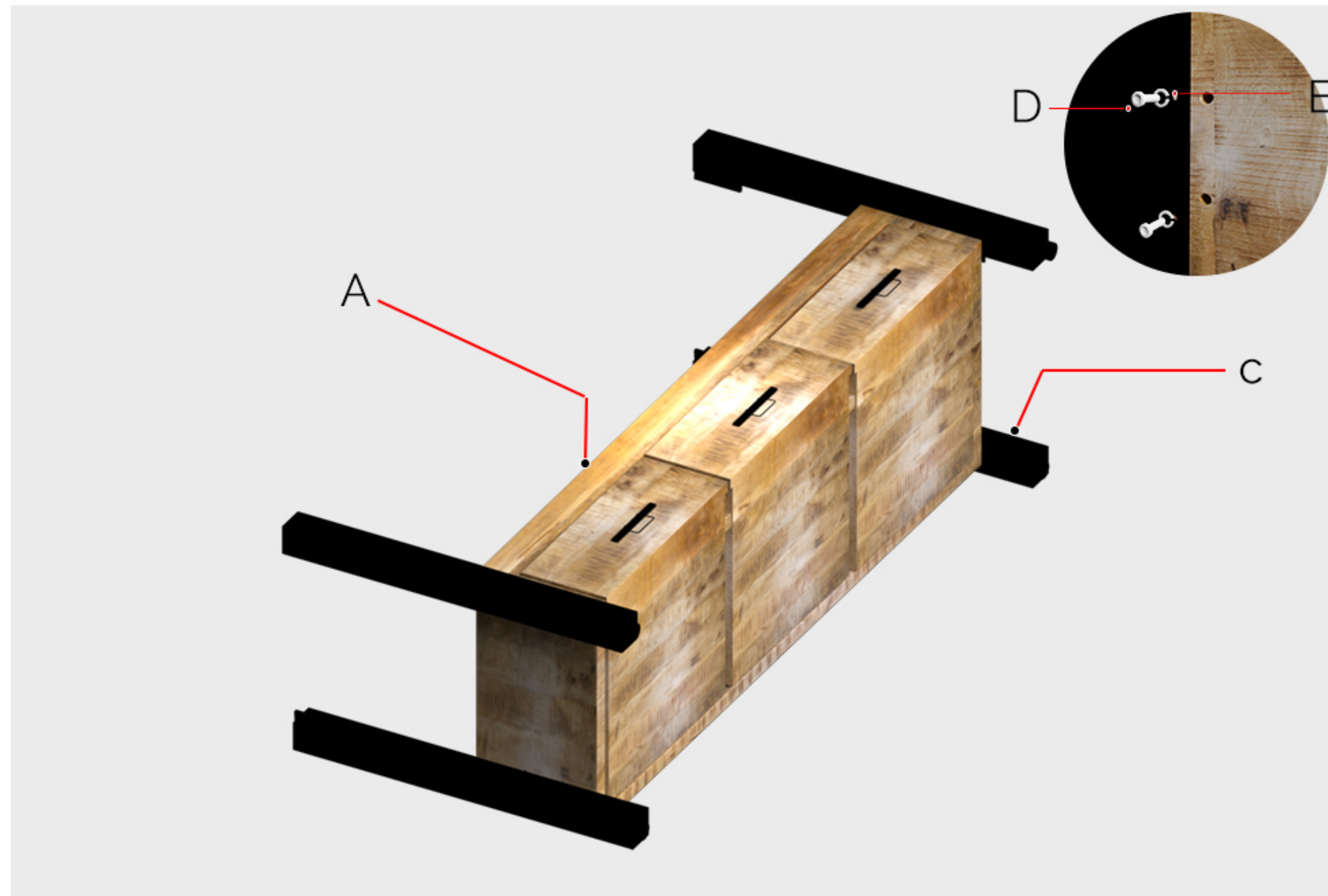


F
ALLEN KEY
1X

STEP 1

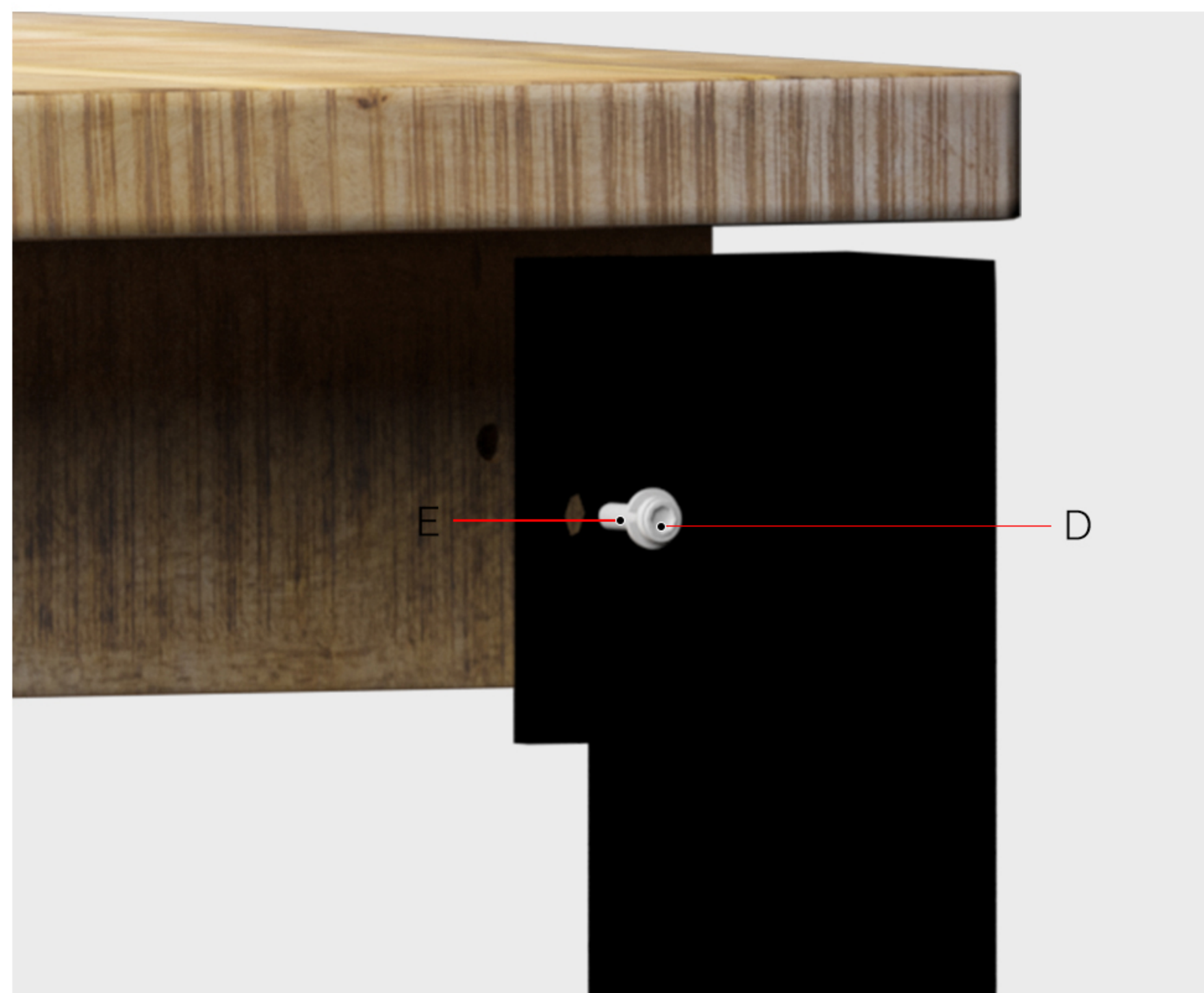
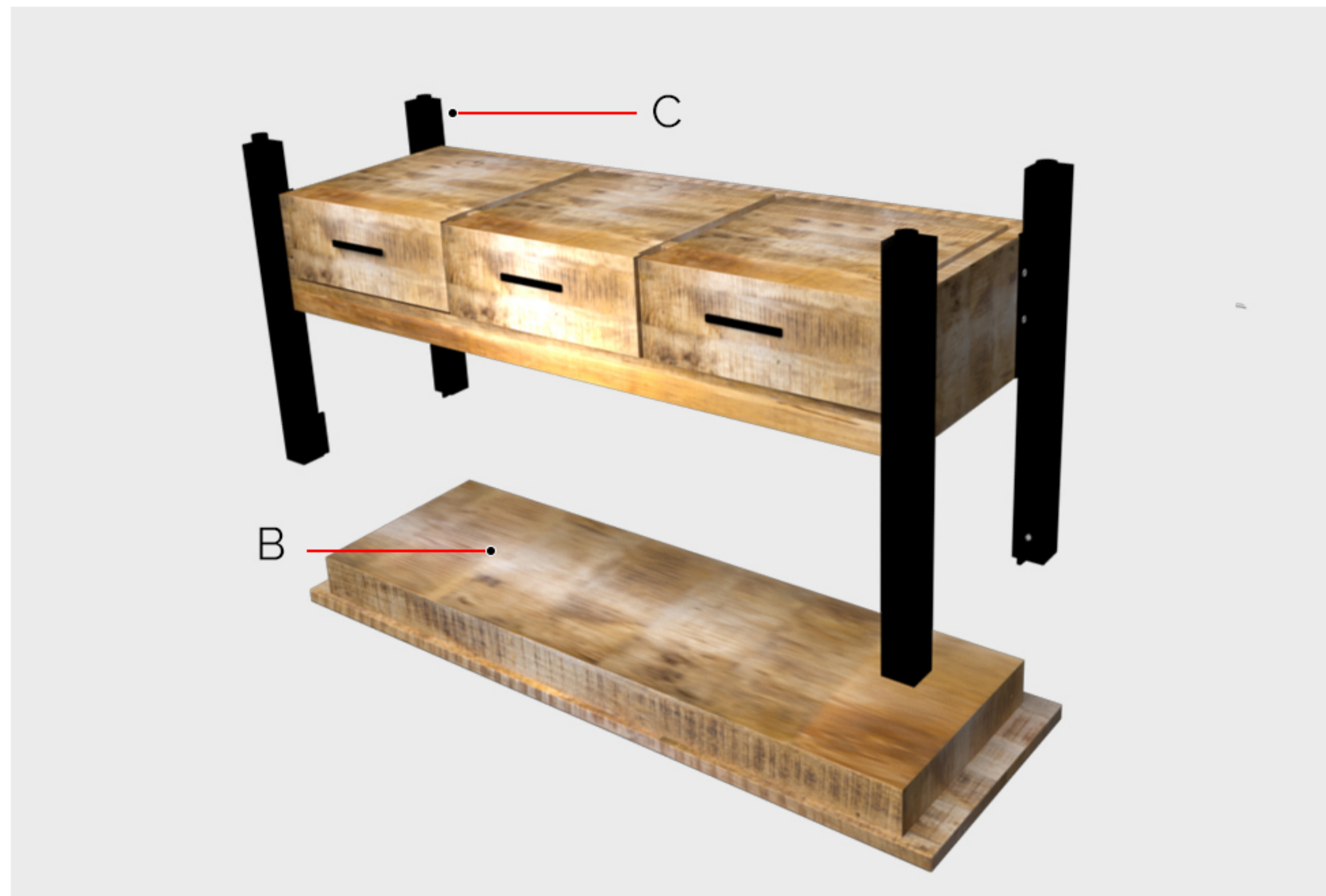
Place Leg (C) in the corner of Wooden Drawer (A) using the image below as reference. Fix in place using Washer (E), Hexa Screws (D), and Allen Key (F). Repeat with all four legs.

Note - While assembling the product, first tighten the screws up to 50%. Once all parts are in place, only then fully tighten the screws!



STEP 2

Now, place Wooden Top (B) on Legs (C) and fix in place using Washer (E) and Hexa Screws (D).



STEP 3

Tighten the Hexa Screws (D) with Allen Key (F).



Your assembly is now complete!