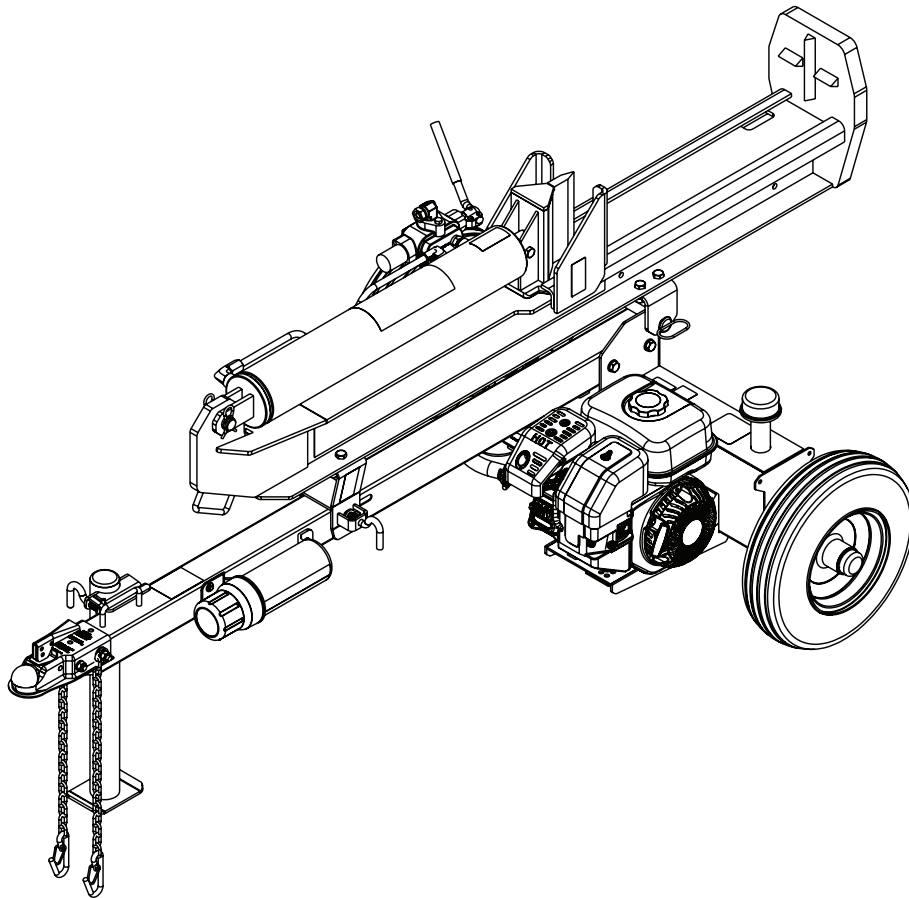




**DIRTY HAND
TOOLS**

25-Ton & 30-Ton Vertical/Horizontal Log Splitters



MODEL #'s 107036 (25-Ton) & 107079 (30-Ton)

Operation Manual



This safety alert symbol identifies important safety messages in this manual. Failure to follow this important safety information may result in serious injury or death.

Part # 107171 Rev A

Designed & Engineered in Colorado, USA



Assembled with Foreign & Domestic Components

For Service or Questions

Call 1-877-487-8275

720-287-5182

www.dirtyhandtools.com

Dirty Hand Tools® is a brand of



FrictionlessWorld

1100 W 120th Ave., Suite 600
Westminster, CO 80234 • 720-287-5182

Table of Contents

Important Safety Information	4
Intended Use	4
Personal Protective Equipment	4
Safety Decals	5
General Safety	6
Preparation of the Log	6
Work Area	6
Operation of the Log Splitter	7
Repair and Maintenance Safety	8
Hydraulic Safety	8
Fire Prevention	9
Towing Safety	10
Unpacking & Assembly	11
Log Catcher Installation	12
Operating Instructions	13
Engine Oil Recommendations	13
Starting Instructions	14
Towing	16
Maintenance	16
Assembly Overview	17
Log Catcher Assembly	18
Tank & Wheel Assembly	19
Tank & Tongue Assembly	20
Beam Bracket Assembly	21
Beam & Tank Assembly	22
Hydraulic Line Assembly	23
Tank & Engine Assembly	24
Pump & Engine Assembly	25
Beam Assembly	26
Tongue Assembly	27
Log Splitter Replacement Parts	28
Hardware Kit	29
Log Splitter Accessories	30
Specifications & Warranty	Back Cover

Important Safety Information



WARNING

WARNING: Read and understand the complete Operation Manual before assembling or using this product! Failure to comprehend and comply with warnings, cautions and instructions for assembly and operation could result in serious injury or death.

Do not permit children to operate this equipment at any time. Do not permit others that have not read and understood the complete Operation Manual to operate this equipment. Operation of power equipment can be dangerous. It is the sole responsibility of the operator to understand the assembly and safe operation of this product.

Call our customer service department at **720-287-5182**, **1-877-487-8275**, or visit www.dirtyhandtools.com if you have any questions or concerns about the safe operation of this equipment.



DANGER

INTENDED USE

Do Not Use the log splitter for any purpose other than splitting wood, for which it was designed. Any other use is unauthorized and may result in serious injury or death.

PERSONAL PROTECTIVE EQUIPMENT

When operating this log splitter it is essential that you wear safety gear including goggles or safety glasses, steel toed shoes and tight fitting gloves (no loose cuffs or draw strings). Always wear ear plugs or sound deafening headphones to protect against hearing loss when operating this log splitter.



CAUTION

Do Not wear loose clothing or jewelry that can be caught by moving parts of the log splitter. Keep clothing and hair away from all moving parts when operating this log splitter.



Important Safety Information

SAFETY DECALS

Make sure all safety warning decals are attached and in readable condition. Replace missing or defaced decals. Contact Dirty Hand Tools at 1-877-487-8275 for replacement decals.

⚠ WARNING

TO AVOID SERIOUS INJURY OR DEATH:



READ MANUAL BEFORE OPERATION



WEAR PROTECTIVE HEAD GEAR



WEAR GOGGLES OR PROTECTIVE EYEWEAR



WEAR NOISE DEAFENING HEADPHONES



WEAR PROTECTIVE FOOTWEAR



WEAR GLOVES



DO NOT USE HANDS TO CHECK FOR LEAKS



AVOID PINCH POINTS KEEP AWAY FROM MOVING PARTS

• STAY WITHIN DESIGNATED OPERATION ZONE
 • KEEP PETS AND BYSTANDERS AWAY
 • NEVER REACH OVER SPLITTER DURING OPERATION
 • DO NOT OPERATE IN ENCLOSED SPACE
 • KEEP BODY & CLOTHING AWAY FROM MOVING PARTS
 • OPERATE ONLY WHEN COMPLETELY ALERT

OPERATING INSTRUCTIONS

1. PLACE LOG SPLITTER ON A STABLE, FLAT SURFACE
2. START ENGINE & ADVANCE THROTTLE TO MAXIMUM
3. PLACE LOG ON CRADLE AGAINST FOOT PLATE
4. MOVE VALVE HANDLE TOWARDS FOOT PLATE TO EXTEND THE WEDGE AND SPLIT THE LOG
5. MOVE VALVE HANDLE TOWARDS THE OPERATOR TO RETRACT THE WEDGE FROM THE LOG

NOTE: SPLIT WOOD IN DIRECTION OF THE GRAIN

CONTROL VALVE OPERATION



RETRACT

EXTEND

For repair or service please call 1-877-487-8275


100212

Operation Decal Part # 100212

⚠ WARNING

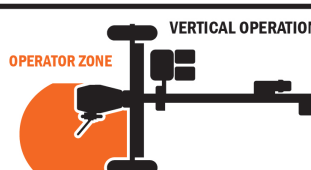
EQUIPMENT OPERATION SHALL ONLY BE PERFORMED IN THE DESIGNATED OPERATOR ZONE BY ONE PERSON

HORIZONTAL OPERATION



OPERATOR ZONE

VERTICAL OPERATION



OPERATOR ZONE

100399

Operator Zone Decal Part # 100399

NOTICE

Tank oil level should always be kept between the "MAX" and "MIN" lines indicated on the dipstick. Never fill the reservoir above the "MAX" line. Consult the Operation Manual for maximum system and operating fluid capacities. Select oil viscosity based on the outside temperature at the time of operation in the table below.

										AW-68	
										AW-46	
										AW-32	
										DEXRON VI	
°F	-20	0	10	20	32	40	50	60	80	100	
°C	-30	-20	-10	0	10	20	30	40			

100207C

Oil Level Decal Part # 100207


⚠ DANGER



100204

PINCH POINT HAZARD
KEEP CLEAR DURING OPERATION

Pinch Point Decal Part # 100204



ATTENTION
START ENGINE,
CYCLE CYLINDER 3 - 4
TIMES, STOP ENGINE
ADD 32 - 64 FLUID OZ.
AW46 HYDRAULIC
FLUID BEFORE
OPERATION.

107163

Hydraulic Fluid Decal Part # 107163

⚠ WARNING

TO AVOID SERIOUS INJURY OR DEATH

- Read the **Operation Manual** on how to attach the coupler to the hitch ball and how to tow safely.
- Ensure the correct ball size is being used.
- Do not exceed hitch ball or coupler load limits.
- Attach and secure safety chains prior to towing.
- Do not exceed maximum towing speed of 45 mph.
- Avoid sharp turns and steep angles.
- Check tightness of the coupler before towing.
- Replace the hitch ball or coupler if damaged.

100208

Warning Decal Part # 100208

⚠ CAUTION



HOT SURFACE
DO NOT TOUCH

106047

Hot Surface Decal Part # 106047

Important Safety Information



DANGER

GENERAL SAFETY

Failure to follow warnings, cautions, assembly and operation instructions in the Operation Manual may result in serious injury or death.

Read the Operation Manual before operation.

- **Do not** permit children to operate this equipment at any time. Do not permit others that have not read and understood the complete Operation Manual to operate this equipment.
- Keep all people and pets a minimum of 10 feet away from the work area when operating this log splitter. Only the operator is to be near the log splitter during use.
- **Do not** operate the log splitter when under the influence of alcohol, drugs or medication.
- **Do not** allow a person who is tired or otherwise impaired or not completely alert to operate the log splitter.

PREPARATION OF THE LOG

Both ends of the log should be cut as square as possible to prevent the log from rotating out of the splitter during operation.

Do not split logs greater than 25 in. in length.



DANGER

WORK AREA

- **Do not** operate the log splitter on icy, wet, muddy or otherwise slippery ground. **ONLY** operate your log splitter on level ground. **Operating on a slope could cause the log splitter to roll over or logs to fall off of the equipment, which could result in injury.**
- **Do not** operate the log splitter in an enclosed area. Exhaust fumes from the engine contain carbon monoxide which can be harmful or deadly when inhaled.
- **Do not** move the log splitter over hilly or uneven terrain without a tow vehicle or adequate help.
- Use a tire chock or block on the wheels to prevent movement of the log splitter while in operation.
- Operate the log splitter in daylight or under good artificial light.
- Keep the work area free of clutter. Remove split wood from around the log splitter immediately after each use to avoid potential tripping.



Important Safety Information

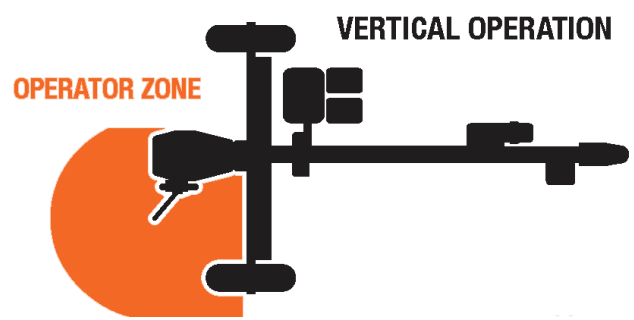
OPERATION OF THE LOG SPLITTER

Operate the log splitter from within the operation zone as shown in the diagrams below. The operator has the safest and most efficient access to the control valve and the beam in these locations.



DANGER

Failure to operate the log splitter in this position can result in serious injury or death.



DANGER

- Make sure the operator knows how to stop and disengage the controls before operating.
- Do not place hands or feet between the log and splitting wedge during forward or reverse stroke. Serious injury or death could result.
- Do not straddle or step over the log splitter during operation.
- Do not reach or bend over the log splitter to pick up a log.
- Do not attempt to split two logs on top of each other.
- Do not attempt to cross split a log.
- Do not attempt to load your log splitter when the ram or wedge is in motion.
- Use your hand to operate the control lever on the valve. Do not use your foot, a rope or any extension device.
- Do not move the log splitter while the engine is running.
- Never leave the equipment unattended while the engine is running. Shut off the engine even if you are leaving the log splitter for a short period of time.
- Avoid contact with the muffler and other hot areas of the engine during operation or after running to prevent burns.

Important Safety Information

REPAIR AND MAINTENANCE



WARNING

- **Do not operate the log splitter when it is in poor mechanical condition or in need of repair.** Frequently check that all nuts, bolts, screws, hydraulic fittings and hose clamps are tight.
- **Do not** alter the log splitter in any manner. Any alteration will void the warranty and could cause the log splitter to be unsafe to operate. Perform all recommended maintenance procedures before using the log splitter. Replace all damaged or worn parts immediately.
- **Do not** tamper with the engine to run it at excessive speeds. The maximum engine speed is preset by the manufacturer and is within safety limits. See Kohler engine manual.
- Remove the spark plug wire before performing any service or repair on the log splitter.
- **Always check the level of hydraulic oil and engine oil before operation.**
- Replacement parts must meet manufacturer's specifications.

HYDRAULIC SAFETY

The hydraulic system of the log splitter requires careful inspection along with the mechanical parts. Be sure to replace frayed, kinked, cracked or otherwise damaged hydraulic hoses or hydraulic components.

- **Check for hydraulic fluid leaks** by passing a piece of paper or cardboard underneath or over the area of the leak. **Do not check for leaks with your hand.** *Fluid escaping from the smallest hole, under pressure, can have enough force to penetrate the skin causing serious injury or death.*
- **Seek professional medical attention immediately if injured by escaping hydraulic fluid.** Serious infection or reaction can develop if medical treatment is not administered immediately.
- Relieve all pressure by shutting off the engine and moving the valve control handle back and forth should it become necessary to loosen or remove any hydraulic fitting.
- **Do not** remove the cap from the hydraulic tank or reservoir while the log splitter is running. *The tank could contain hot oil under pressure which could result in serious injury.*
- **Do not** adjust the hydraulic valve. The pressure relief valve on the log splitter is preset at the factory. *Only a qualified service technician should perform this adjustment.*

Important Safety Information

FIRE PREVENTION



CAUTION

- **Do not** operate the log splitter near an open flame or spark. *Hydraulic oil and gasoline are flammable and can explode.*
- **Do not** fill the gas tank while the engine is hot or running. Allow the engine to cool before refueling.
- **Do not** smoke while operating or refueling the log splitter. Gas fumes can easily explode.
- Refuel the log splitter in a clear area with no gas fumes or spilled gas. Use an approved fuel container. Replace the gas cap securely. If gasoline has spilled, move the log splitter away from the area of the spill and avoid creating any source of ignition until the spilled gas has evaporated.
- Keep a Class B fire extinguisher on hand when operating this log splitter in dry areas as a precautionary measure against possible flying sparks.
- Drain the fuel tank prior to storage to avoid the potential fire hazard. Store gasoline in an approved, tightly sealed container. Store the container in a cool, dry place.
- Turn the fuel shut off valve on the engine to the “OFF” position before towing the log splitter. Failure to do so may result in flooding the engine.



CAUTION

IMPORTANT NOTE:

This log splitter is equipped with an internal combustion engine and should not be used on or near any unimproved forest-covered, brush-covered or grass-covered land unless the engine's exhaust system is equipped with a spark arrester meeting applicable local or state laws (if any). If a spark arrester is used, it should be maintained in effective working order by the operator. In the state of California a spark arrester is required by law. Other states have similar laws.

Federal laws apply on federal lands. A spark arrester muffler (optional by manufacturer) is available as an accessory at your nearest engine dealer. Always check the legal requirements in your area.

Important Safety Information



TOWING SAFETY

- Check all local and state regulations regarding towing, licensing, and lights before towing your log splitter.
- Check before towing to make sure that the log splitter is correctly and securely attached to the towing vehicle and that the safety chains are secured to the hitch or bumper of the vehicle with enough slack to allow turning. Always use a Class I, 2" ball with this log splitter.
- **Do not** carry any cargo or wood on the log splitter.
- **Do not** allow anyone to sit or ride on the log splitter.
- Disconnect the log splitter from the towing vehicle before operating it.
- Use care when backing up with the log splitter in tow to avoid jack-knifing. Allow for added length of the log splitter when turning, parking, crossing intersections and in all driving situations.
- **Do not exceed 45 mph when towing your log splitter.** Towing the log splitter at speeds higher than 45 mph could result in loss of control, damage to the equipment, serious injury or death. Adjust towing speed for terrain and conditions. Be extra cautious when towing over rough terrain especially railroad crossings.

Unpacking & Assembly

List of tools needed for assembly:

- Needle nose pliers • Scissors • Box Cutter or knife
- (2) 17mm wrenches • (2) 19mm wrenches

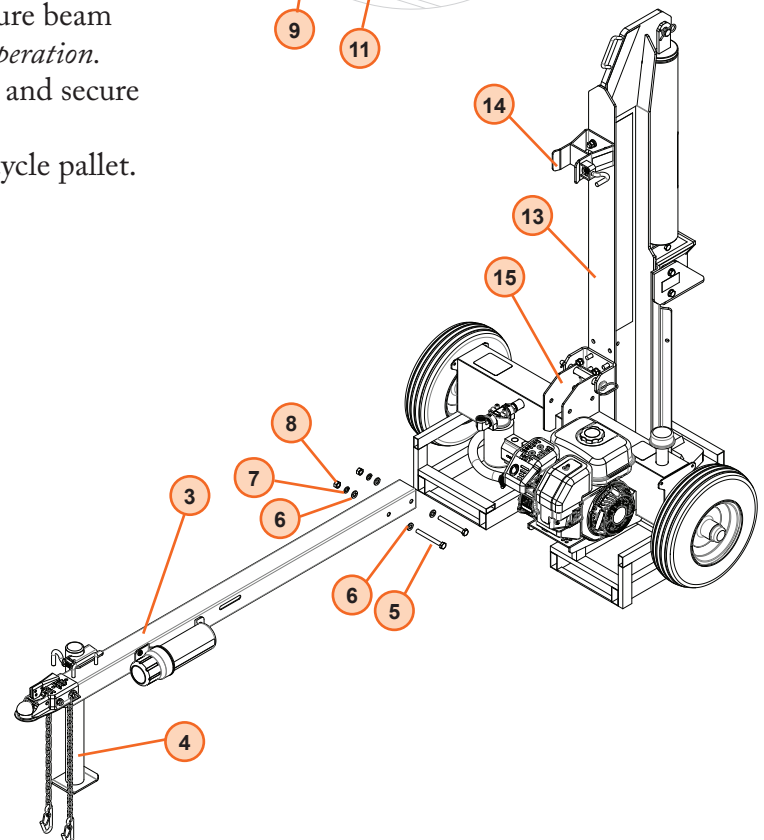
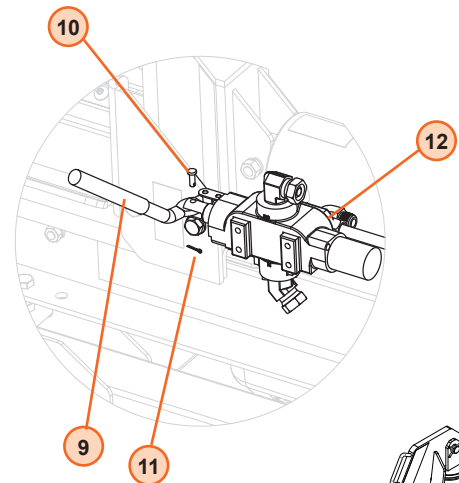
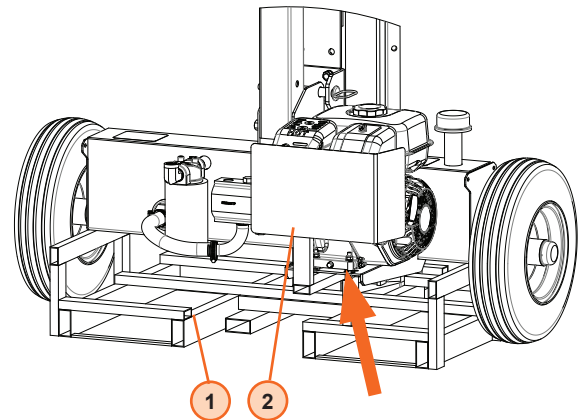
IMPORTANT: The hydraulic tank is pre-filled with AW46 hydraulic fluid and the engine is pre-filled with 10W30 engine oil at the factory.



WARNING

Two (2) people may be required for assembly

1. Cut and remove the box and additional packaging.
2. Cut and remove banding using scissors.
3. Remove engine guard **2** by removing the lynch pin underneath the engine (see arrow). Recycle engine guard.
4. Cut and remove bag around the tow coupler, cut zip tie and lower tongue **3**. Extend tongue stand **4**.
5. Remove bolts, washers, and nuts **5** **6** **7** **8** from tongue mount bracket **15** on tank.
6. Slide tongue **3** into the mounting bracket **15**, aligning the two holes in the tongue with the two holes in the bracket and secure with hex bolt **5**, washer **6**, lock washer **7** and hex nut **8**, in two places.
7. Lower beam into the horizontal position and secure beam latch **14**. *Two people may be required to complete operation.*
8. Attach valve handle **9** into operational position and secure with clevis pin **10** and cotter pin **11**.
9. Remove log splitter from metal pallet **1** and recycle pallet. *Two people may be required to complete operation.*
10. Check all fittings and hardware for tightness.

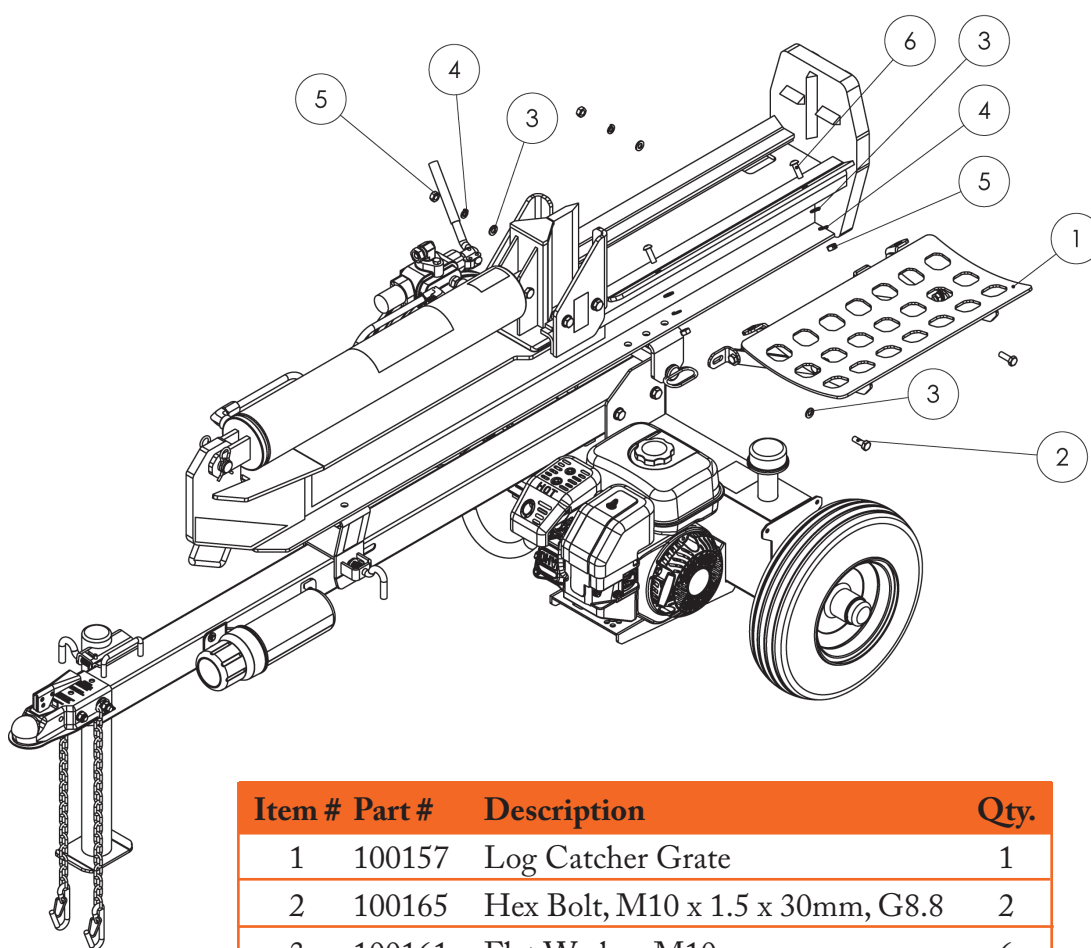


Item	Description	Qty.
1	Metal Pallet	1
2	Engine Guard	1
3	Tongue & Stand Assembly	1
4	Tongue Stand	1
5	Hex Bolt, M12 x 1.75 x 1.10mm, G8.8	2
6	Flat Washer, M12	4
7	Lock Washer, M12	2
8	Hex Nut, M12 x 1.75, G8.8	2
9	Valve Handle	1
10	Clevis Pin, 1/4 in. x 1/2 in.	1
11	Cotter Pin, 1/16 in. x 1/2 in.	1
12	Detent Valve	1
13	Beam & Cylinder Assembly	1
14	Beam Lock Bracket	1
15	Tongue Mount Bracket	1

Log Catcher Installation (30-Ton)

NOTE: The 25-Ton Log Splitter does not come with a log catcher, which is available as an accessory.

1. Rotate Beam & Cylinder Assembly down from upright position and lock in place with the release pin.
2. Install the **Log Catcher Assembly** ① with Hex Bolts, M10 x 1.5 x 30mm ②; Flat Washer, M10 ③; Lock Washer, M10 ④; Hex Nut, M10 x 1.5 ⑤; and Button Screw, M10 x 1.5 x 30mm ⑥; in 2 places. Tighten hex nuts securely with a 17mm socket wrench and tighten button screws with 6mm hex key wrench.



Item #	Part #	Description	Qty.
1	100157	Log Catcher Grate	1
2	100165	Hex Bolt, M10 x 1.5 x 30mm, G8.8	2
3	100161	Flat Washer, M10	6
4	100089	Lock Washer, M10	4
5	100009	Hex Nut, M1 x 1.5, G8.8	4
6	100064	Button Screw, M10 x 1.5 x 30mm, G8.8	2

Operating Instructions



DANGER

WARNING: Read and understand the complete Operation Manual before assembling or using this product! Failure to comprehend and comply with warnings, cautions and instructions for assembly and operation could result in serious injury or death.

Do not permit children to operate this equipment at any time. **Do not** permit others that have not read and understood the complete Operation Manual to operate this equipment. Operation of power equipment can be dangerous. It is the sole responsibility of the operator to understand the assembly and safe operation of this product.

Call our customer service department at **720-287-5182**, **1-877-487-8275**, or visit www.dirtyhandtools.com if you have any questions or concerns about the safe operation of this equipment.



CAUTION

The hydraulic reservoir should be filled with hydraulic fluid and the engine should be filled with engine oil before starting or operation.

STEP 1: Add approximately 4 gallons of hydraulic fluid. The remaining hydraulic fluid will be added after the cylinder is cycled. AW32 or AW46 hydraulic oil is recommended. Automatic transmission fluid can be substituted instead of hydraulic oil when temperatures are below 32°F. Use only clean oil and take care to prevent dirt from entering the hydraulic reservoir.

ENGINE OIL RECOMMENDATIONS

Use 4-stroke automotive detergent oil. SAE 10W-30 is recommended for general use. Refer to the SAE Viscosity Grades chart in your engine owner's manual for average temperature ranges. The engine manufacturer recommends using API SERVICE Category SE or SF oil. The engine oil capacity is 20 oz. for Kohler SH265 (22-Ton/27-Ton) and 40 oz. for Kohler CH395 (35-Ton). Always check oil level before starting the engine and keep level full.



DIRTY HAND
TOOLS

Operating Instructions

Step 2: After the hydraulic reservoir and the engine crankcase are filled with oil, start the engine. The hydraulic pump is self-priming. With the engine running, move the hydraulic valve lever toward the foot plate. This will cause the cylinder to extend and expel air. When the cylinder is fully extended, retract it. Repeat this procedure several times. An erratic movement of the cylinder indicates that there is still air in the system. Add about 1.0 to 1.5 gallons of hydraulic fluid. Five gallons will register just above the top fill line on the dip stick. The total capacity of the entire hydraulic system is 6.5 gallons with 5 gallons of hydraulic fluid the minimum required to operate.

NOTE: If the tank is overfilled it will expel oil from the breather cap when the cylinder is retracted. Cycle the cylinder again until it has a constant speed which indicates that all air has been expelled.

STARTING INSTRUCTIONS

NOTE: Refer to the Engine Owner's Manual for complete information on starting, maintenance and troubleshooting.

1. Move the fuel valve lever to the ON position.
2. To start a cold engine, move the choke lever to the CLOSE position. To restart a warm engine, leave the choke lever in the OPEN position.
3. Move the throttle lever away from the SLOW position, about 1/3 of the way toward the FAST position.
4. Turn the engine switch to the ON position.
5. Pull the starter grip until you feel resistance, then pull briskly. Return the starter grip gently.
6. If the choke lever has been moved to the CLOSE position to start the engine, gradually move it to the OPEN position as the engine warms up.
7. To stop the engine in an emergency, simply turn the engine switch to the OFF position. Under normal conditions, move the throttle lever to the SLOW position and then turn the engine switch to the OFF position. Then turn the fuel valve lever to the OFF position.

For further information on starting and stopping the engine, refer to your engine owner's manual.

Operating Instructions



CAUTION

CAUTION: Turn Fuel Shut Off Valve to the “Off” position before towing to avoid flooding the engine.

NOTE: The engine’s maximum speed is factory preset at 3600 RPM as the no load speed. The throttle should be set at the maximum speed for wood splitting to reach the horsepower required for the pump.



WARNING

WARNING: Review safety information related to operation of the log splitter on pages 4-10 of this manual. Make sure that you have the recommended personal protective equipment described on page 4.

1. Set up the log splitter in a clear, level area and block the wheels. Make sure that the suction port on the tank is always on the lower side of the log splitter.
2. For horizontal operation place a log on the beam against the foot plate. Make sure the log is securely on the foot plate and against the beam. To split wood in the vertical position, release the pin on the beam latch located on the front end of the beam. Carefully tilt the beam up until the foot plate is sitting squarely on the ground and the log splitter is stable. Place the log on the foot plate against the beam. When the beam is returned to the horizontal position make sure the beam latch is securely locked down.
3. With the engine running, depress the valve handle so that the cylinder will drive the wedge into the log. Extend the cylinder until the log splits or to the end of its stroke. If the log has not completely split after the cylinder has reached the end of its extension, retract the cylinder.

IMPORTANT: Leaving the valve in the “actuate” position at the end of the stroke may damage the pump. Always use extra care when splitting logs with unsquare ends.

Store manuals in the Manual Cannister attached to the tongue of the log splitter or file in a safe place for future reference.

Operating Instructions

NOTE: For operation in wooded areas, obtain a spark arrestor for the exhaust system. See the engine operating and maintenance manual and check with your authorized service center. See also Fire Prevention on page 9 of this manual.

IMPORTANT: To extend the life of the hydraulic cylinder avoid bottoming out the wedge plate to the foot piece.
To conform with industry safety recommendations the wedge stops 1/2 inches from the end of the stroke.

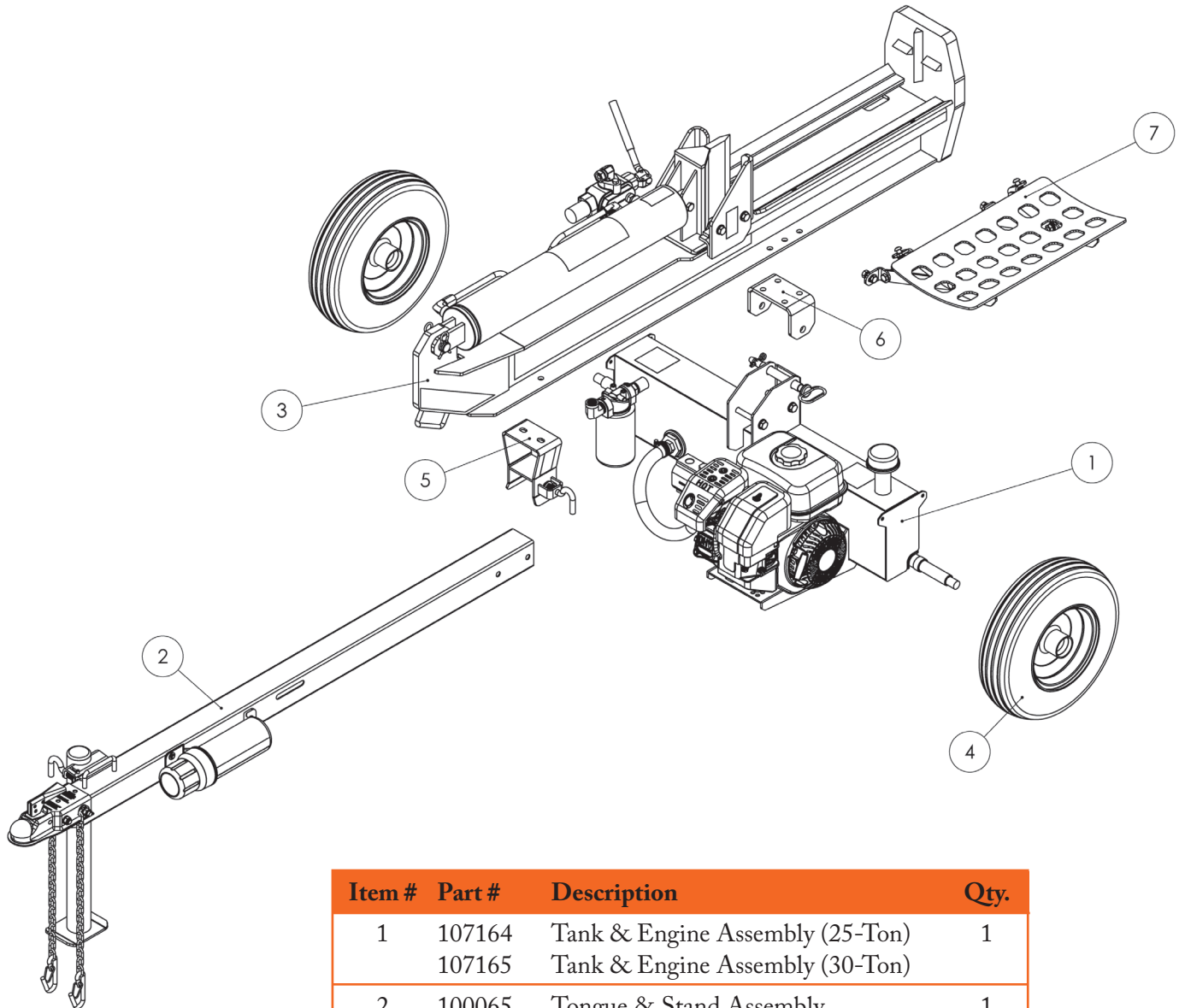
TOWING

This log splitter is equipped with pneumatic tires, a Class I coupler (2 in. diameter ball required) and safety chains. Before towing, the safety chains must be secured to the hitch or bumper of the vehicle. Local regulations should be checked regarding licensing, lights, towing, etc. Turn fuel shut off valve on the engine to the "Off" position prior to towing. Failure to do so may result in flooding the engine. Do not exceed 45 mph when towing this log splitter. *See also Towing Safety on page 10 of this manual.*

MAINTENANCE

1. Consult the operating and maintenance instructions of the engine manufacturer for engine care and maintenance.
2. **Always check the oil level of the hydraulic reservoir before operation.** Operating the log splitter without an adequate oil supply will cause severe damage to the pump.
3. Change the oil filter after the first 25 hours of operation.
There after change the oil filter every 100 hours or seasonally, whichever comes first.
4. To drain the hydraulic oil, loosen the clamp on the hose coming from the fitting on the bottom of the tank. It is located just to the right of the oil filter.
5. If the wedge becomes dull or nicked, it can be removed and sharpened. Remove the bolt that connects the wedge to the cylinder. The hose from the valve may need to be removed. Carefully lift the cylinder to allow the wedge to slide forward. The wedge can now be lifted off and sharpened.
6. Clean the breather cap after 25 hours of operation. Clean it more often when operated in dusty conditions. To clean, remove the breather cap from the tank and flush with kerosene or liquid detergent to remove the dirt.
7. *See Repair and Maintenance on page 8 of this manual.*
8. All replacement parts must meet manufacturer's specifications.

Assembly Overview

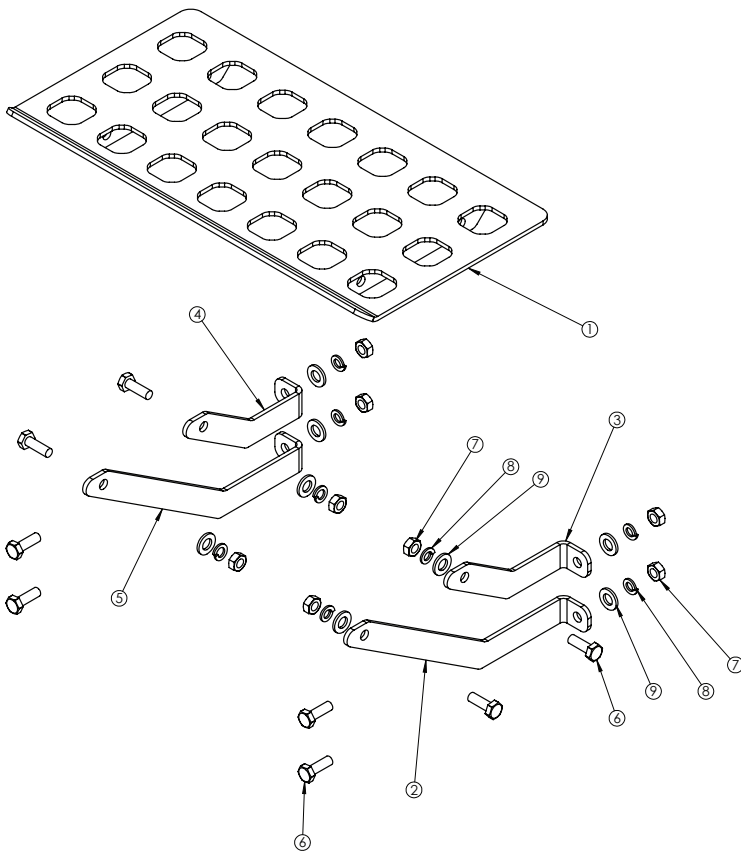


Item #	Part #	Description	Qty.
1	107164	Tank & Engine Assembly (25-Ton)	1
	107165	Tank & Engine Assembly (30-Ton)	
2	100065	Tongue & Stand Assembly	1
3	107166	Beam & Cylinder Assembly (25-Ton)	1
	107167	Beam & Cylinder Assembly (30-Ton)	
4	100062	Wheel/Tire Assembly, 4.80 x 8 in.	2
5	100150	Beam Lock Bracket	1
6	100087	Beam Pivot Bracket	1
7	101391	Log Catcher Assembly (25-Ton)*	1
	100173	Log Catcher Assembly (30-Ton)	

* Item not included with Model 107036 (25-Ton)

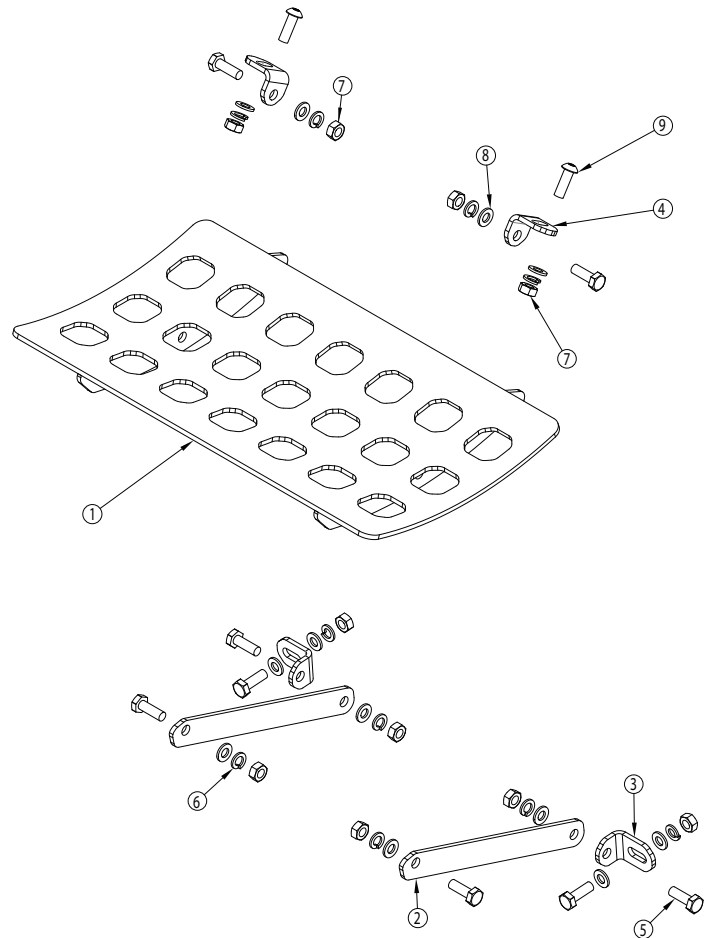
**Item not shown

Log Catcher Assembly



101391

Log Catcher Assembly
For 25-Ton



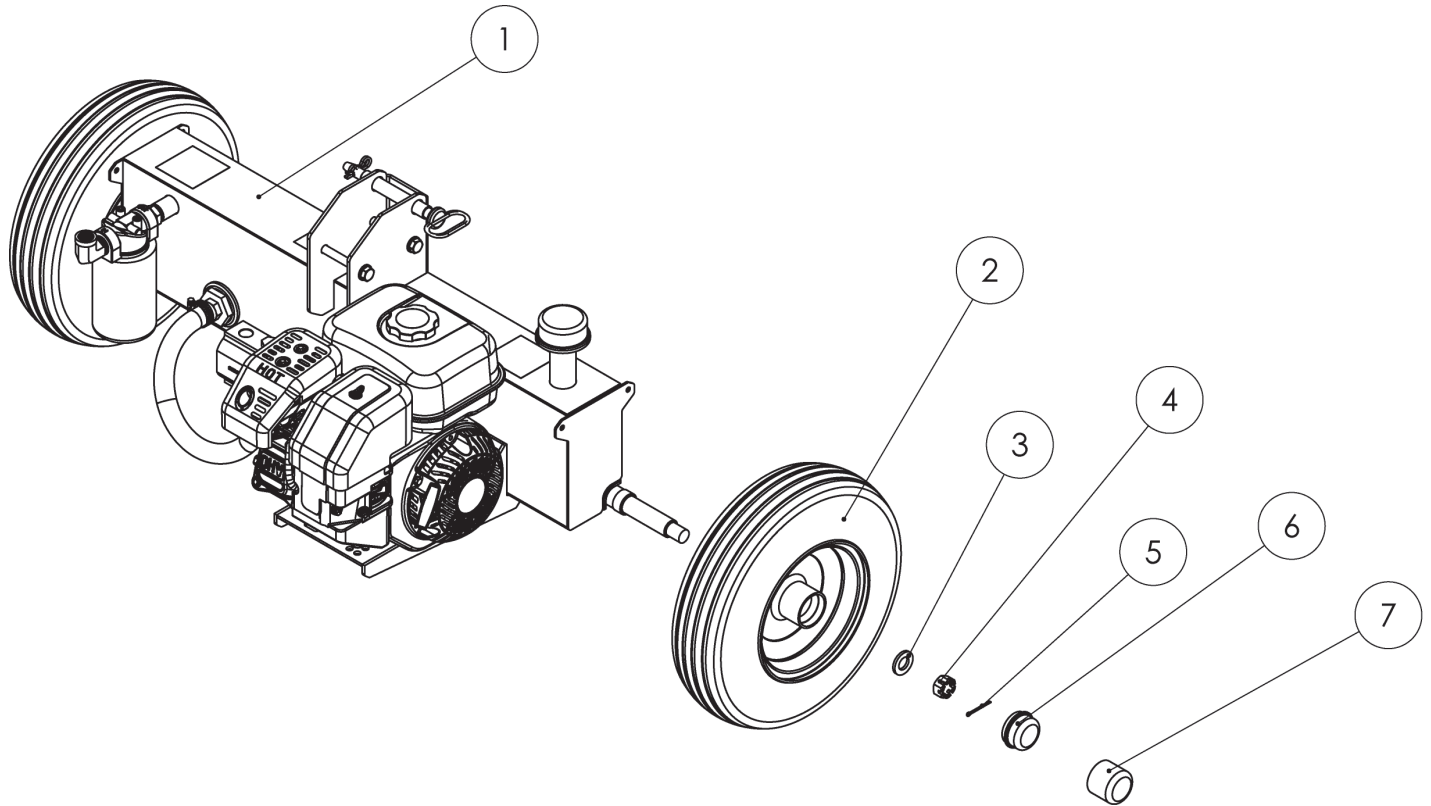
100173

Log Catcher Assembly
For 30-Ton

Item #	Part #	Description	Qty.
1	100929	Log Catcher Grate	1
2	100934	Support Arm, Large Right	1
3	100933	Support, Right	1
4	100930	Support Arm, Left	1
5	100931	Support Arm, Large Left	1
6	100165	Hex Bolt, M10 x 30mm	8
7	100009	Hex Nut, M10	8
8	100089	Lock Washer, M10	8
9	100181	Flat Washer, M12	8

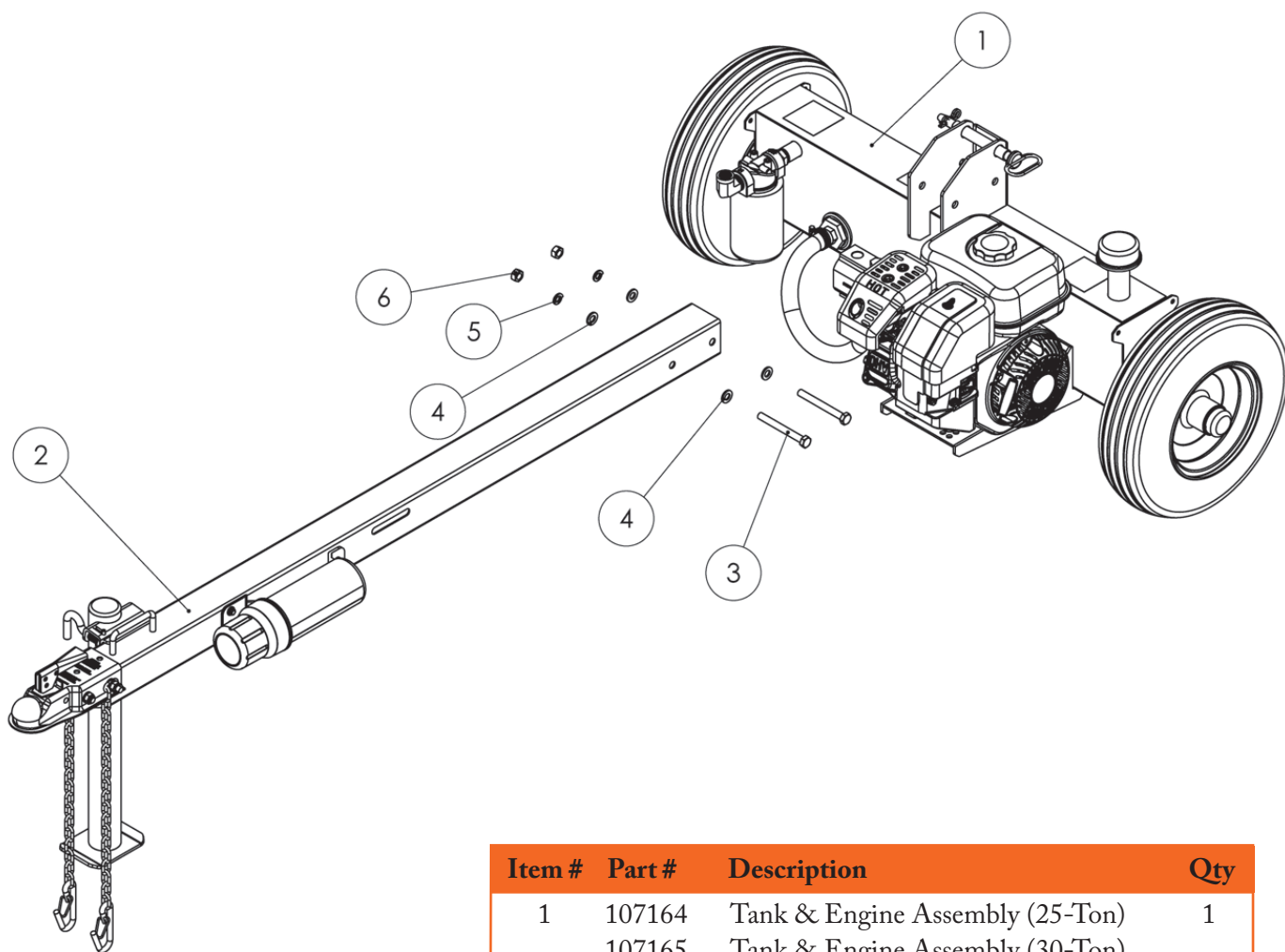
Item #	Part #	Description	Qty.
1	100157	Log Catcher Grate	1
2	100154	Log Catcher Support Plate	2
3	100155	Log Catcher Mount, Lower	2
4	100152	Log Catcher Mount, Upper	2
5	100165	Hex Bolt, M10 x 30mm	8
6	100089	Lock Washer, M10	10
7	100009	Hex Nut, M10	10
8	100161	Flat Washer, M10	12
9	100064	Button Head Screw, M10 x 30mm	2

Tank and Wheel Assembly



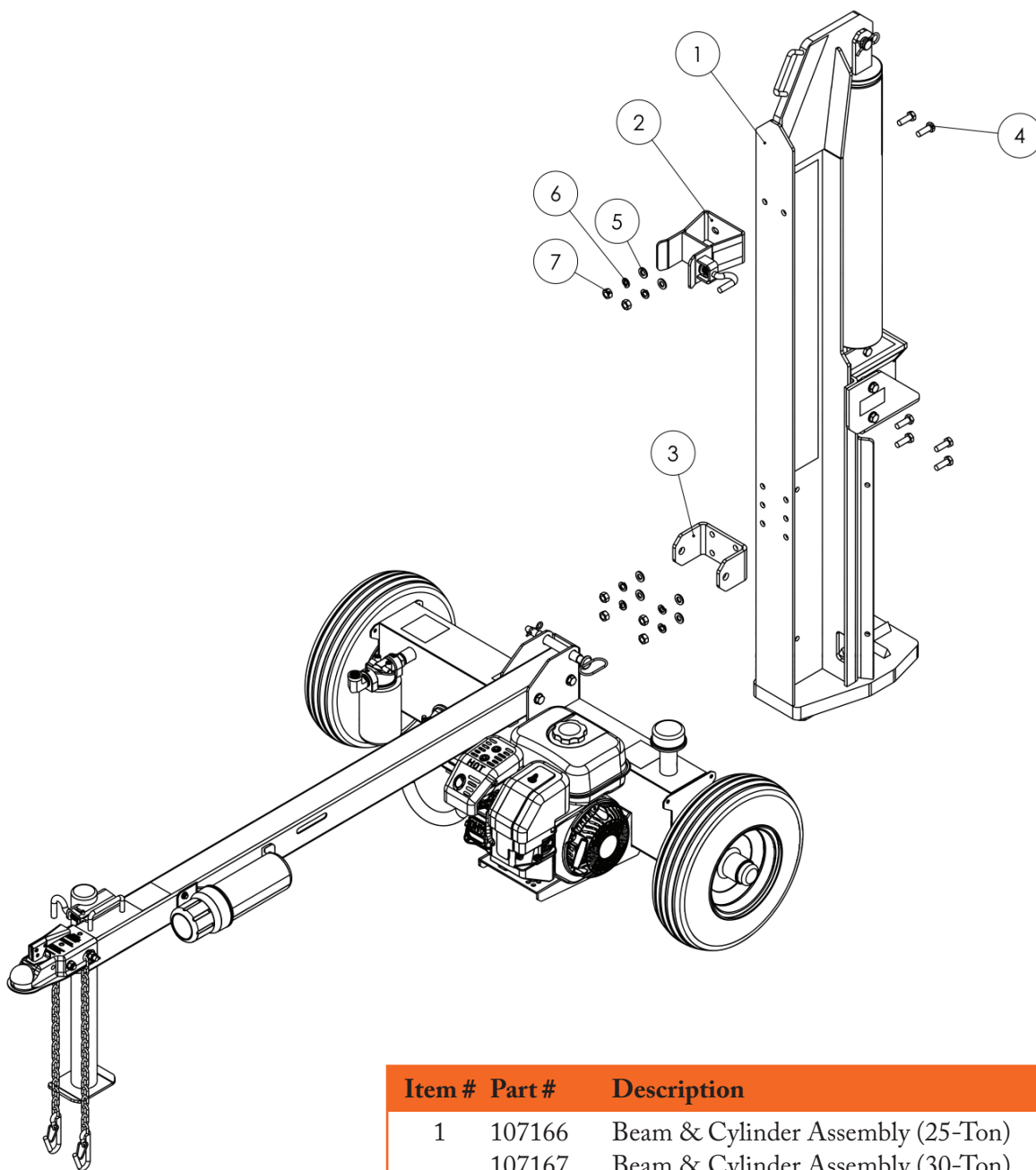
Item #	Part #	Description	Qty.
1	107164	Tank & Engine Assembly (25-Ton)	1
	107165	Tank & Engine Assembly (30-Ton)	
2	100062	Wheel/Tire Assembly, 4.80 x 8 in.	2
3	100142	Flat Washer, 3/4 in.	2
4	100140	Castle Nut, 3/4-16, Clear Zinc	2
5	100143	Cotter Pin, 1/8 in. x 1-1/2 in.	2
6	100063	Hub Cap	2
7	100162	Hub Cap Tool	1

Tank and Tongue Assembly



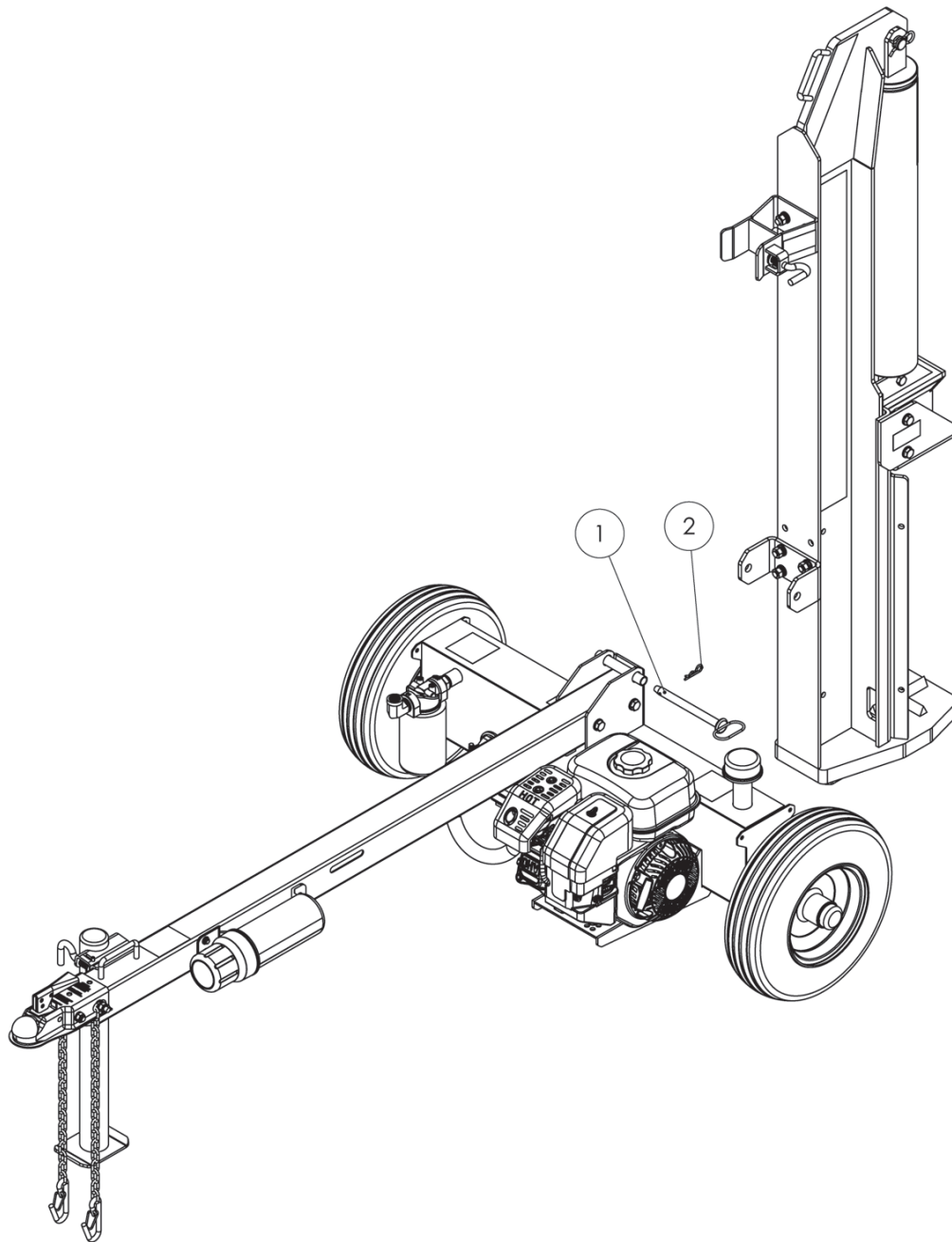
Item #	Part #	Description	Qty
1	107164	Tank & Engine Assembly (25-Ton)	1
	107165	Tank & Engine Assembly (30-Ton)	
2	100065	Tongue & Stand Assembly	1
3	100200	Hex Bolt M12 x 1.75 x 1.10mm, G8.8	2
4	100181	Flat Washer, M12	10
5	100023	Lock Washer, M12	8
6	100022	Hex Nut, M12 x 1.75, G8.8	8

Beam Bracket Assembly



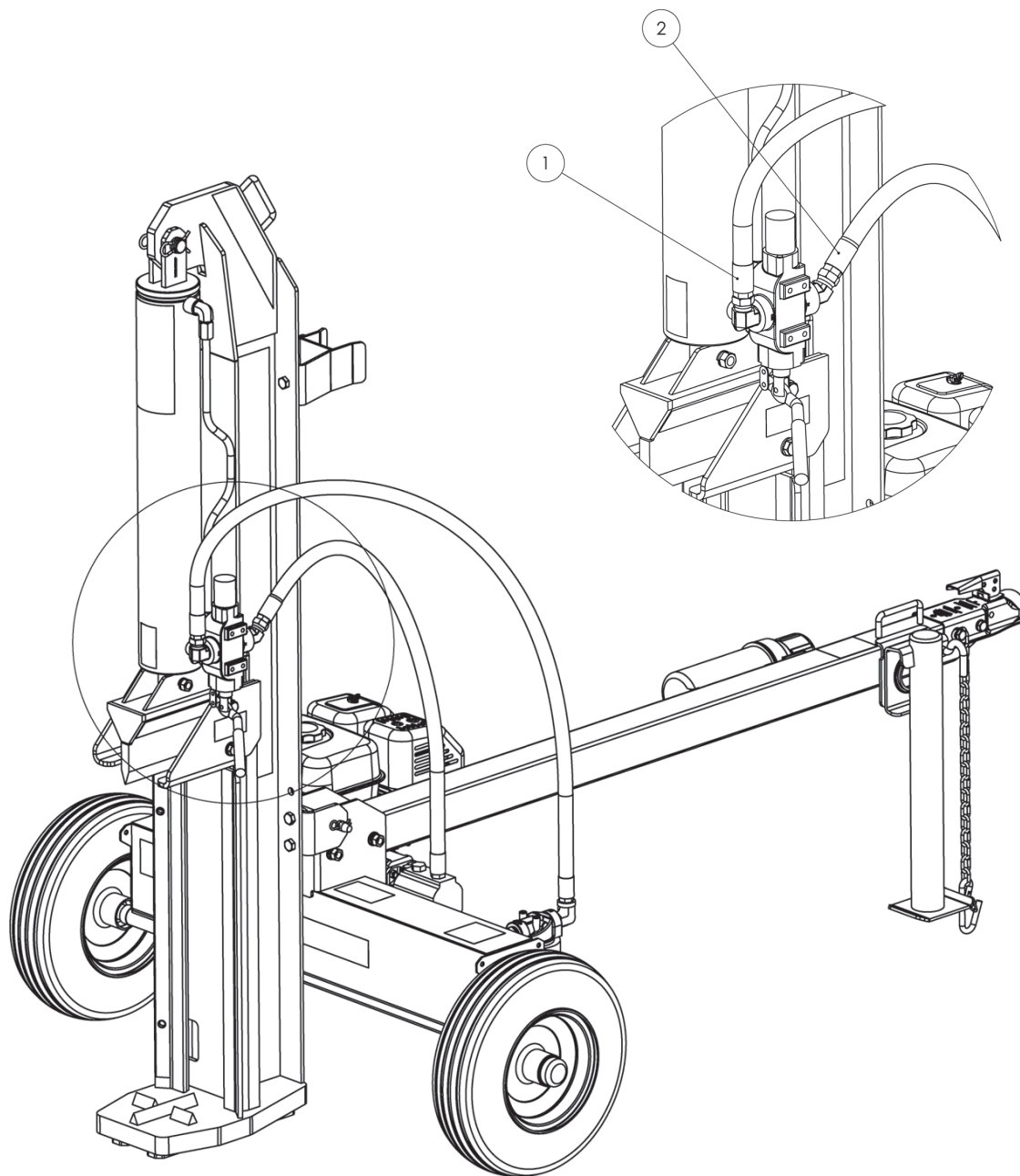
Item #	Part #	Description	Qty.
1	107166	Beam & Cylinder Assembly (25-Ton)	1
	107167	Beam & Cylinder Assembly (30-Ton)	
2	100150	Beam Lock Bracket	1
3	100087	Beam Pivot Bracket	1
4	100021	Hex Bolt, M12 x 1.75 x 35mm, G8.8	7
5	100181	Flat Washer, M12	10
6	100023	Lock Washer, M12	8
7	100022	Hex Nut, M12 x 1.75, G8.8	8

Beam and Tank Assembly



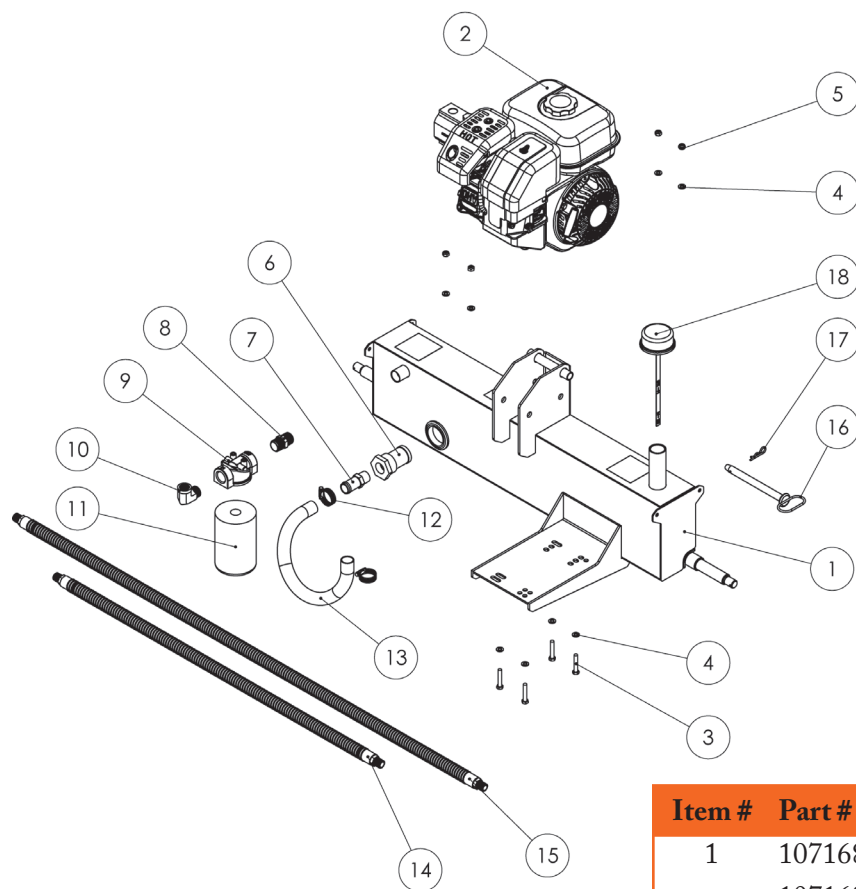
Item #	Part #	Description	Qty.
1	100131	Hitch pin, 5/8 in. x 6 1/4 in.	1
2	100132	R-Clip, 1/8 in., Fits 1/2 in. to 3/4 in.	1

Hydraulic Line Assembly



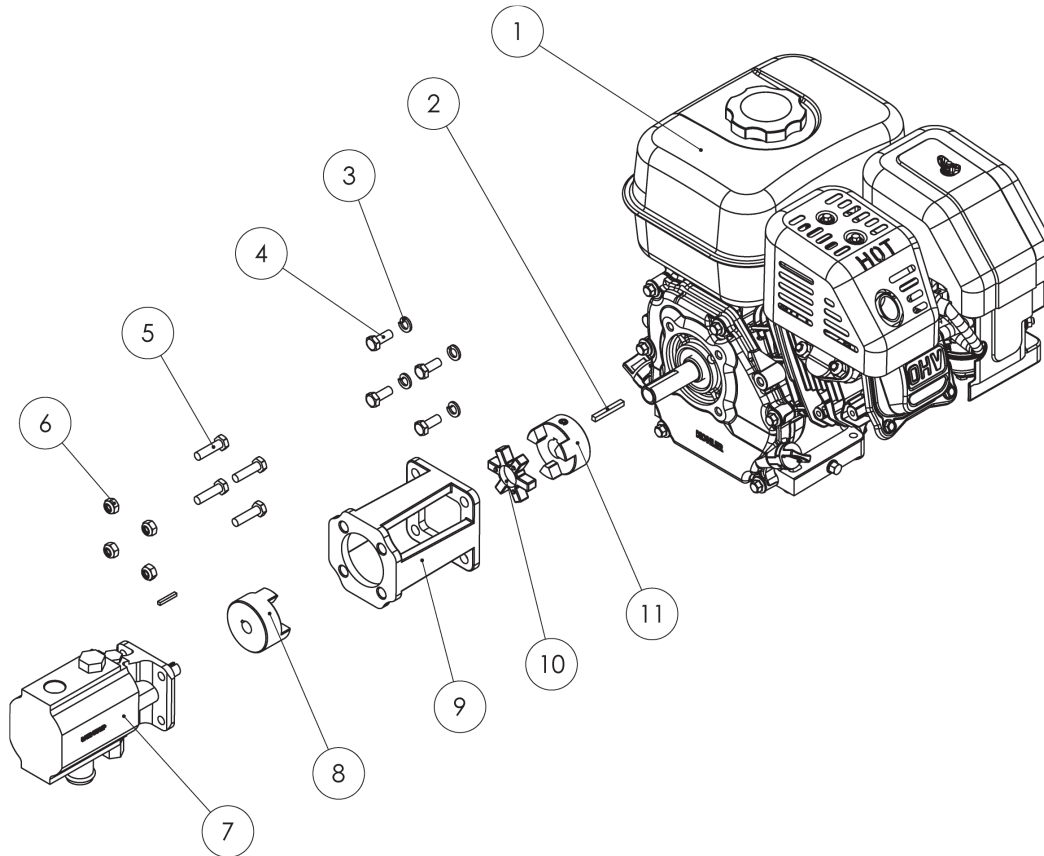
Item #	Part #	Description	Qty.
1	100136	Hydraulic Hose, 1/2 in. x 56 in.	1
2	100137	Hydraulic Hose, 1/2 in. x 38 in.	1

Tank and Engine Assembly



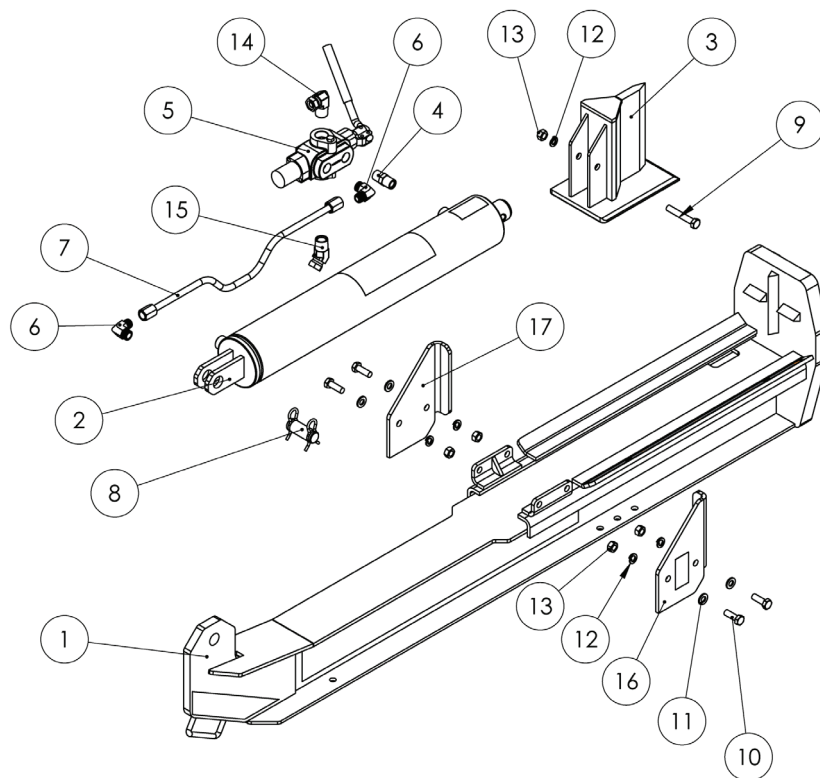
Item #	Part #	Description	Qty.
1	107168	Tank with Decals (25-Ton)	1
	107169	Tank with Decals (30-Ton)	
2	107170	Engine/Pump Assembly	1
3	100129	Hex Bolt, M8 x 1.25 x 45MM, G8.8	4
4	100130	Flat Washer, M8	8
5	100128	Hex Nut, Nylock, M8 x 1.25, G8.8	4
6	100105	Suction Filter	1
7	100111	Fitting, 3/4 NPT to 1 in. Tube	1
8	100112	Fitting, M 3/4 NPT, M 3/4 NPT	1
9	100117	Filter Base, 3/4 NPT, 1-12 UNF	1
10	100118	Elbow M 3/4 NPT, F 1/2 NPT	1
11	100116	Hydraulic Oil Filter (DHT logo)	1
	100448	Hydraulic Oil Filter (Generic logo)	1
12	100138	Hose Clamp, 15/16 in. to 1-1/4 in.	2
13	100135	Suction Line Tube, Wire Reinforced	1
14	100137	Hydraulic Hose, 1/2 in. x 38 in.	1
15	100136	Hydraulic Hose, 1/2 in. x 56 in.	1
16	100131	Hitch Pin, 5/8 in. x 6 1/4 in.	1
17	100132	R-Clip, 1/8 in., 1/2 in. to 3/4 in.	1
18	100110	Vent Cap Assembly	1

Pump and Engine Assembly



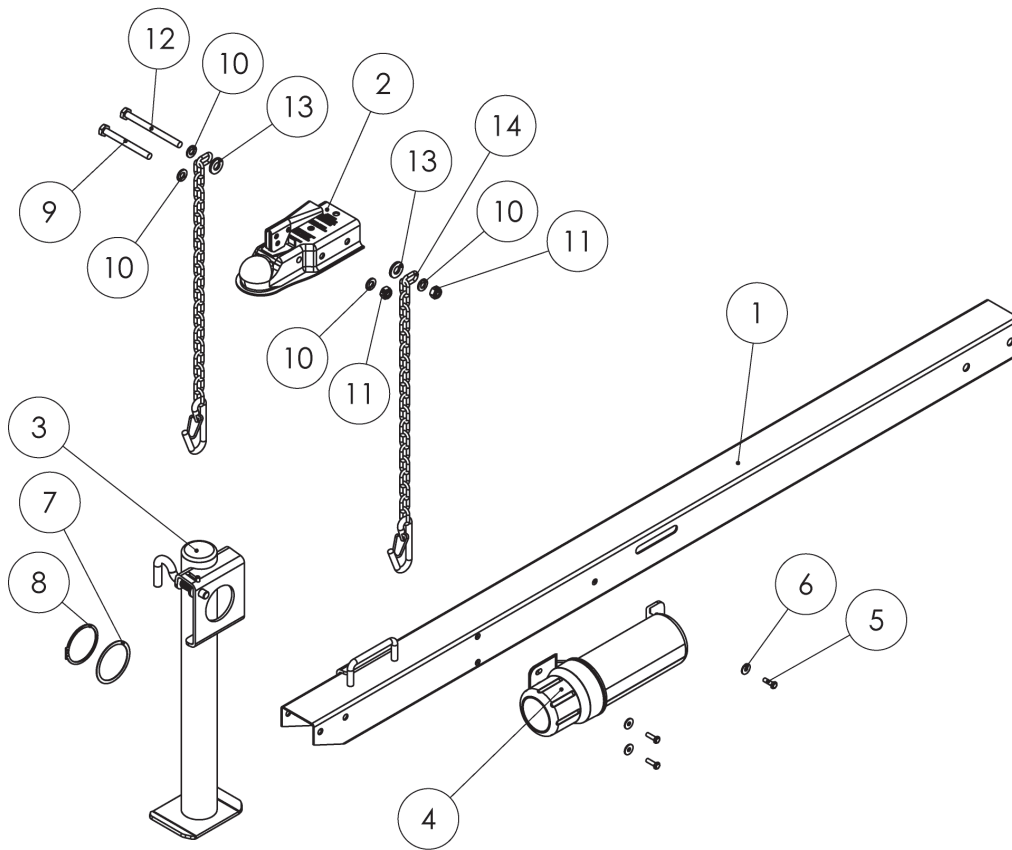
Item #	Part #	Description	Qty.
1	100121	Engine, Kohler SH265	1
2	100159	Bar, Key Stock, SQ 3/16 in. x 1-1/2 in.	1
3	100127	Lock Washer, M8	4
4	100486	Hex Bolt, 5/16 in.-24 x 1.25 in., Z5	4
5	100126	Hex Bolt, M8 x 1.25 x 30mm, G8.8	4
6	100128	Hex Nut, Nylock, M8 x 1.25, G8.8	4
7	107133	Pump, 2 Stage, 15 GPM	1
8	100397	Jaw Coupler Assembly, 1/2 in. Bore, L090	1
9	100016	Pump Mount, 92mm BC	1
10	100124	Jaw Spider Coupler, L090	1
11	100398	Jaw Coupler Assembly, 3/4 in. Bore	1

Beam Assembly



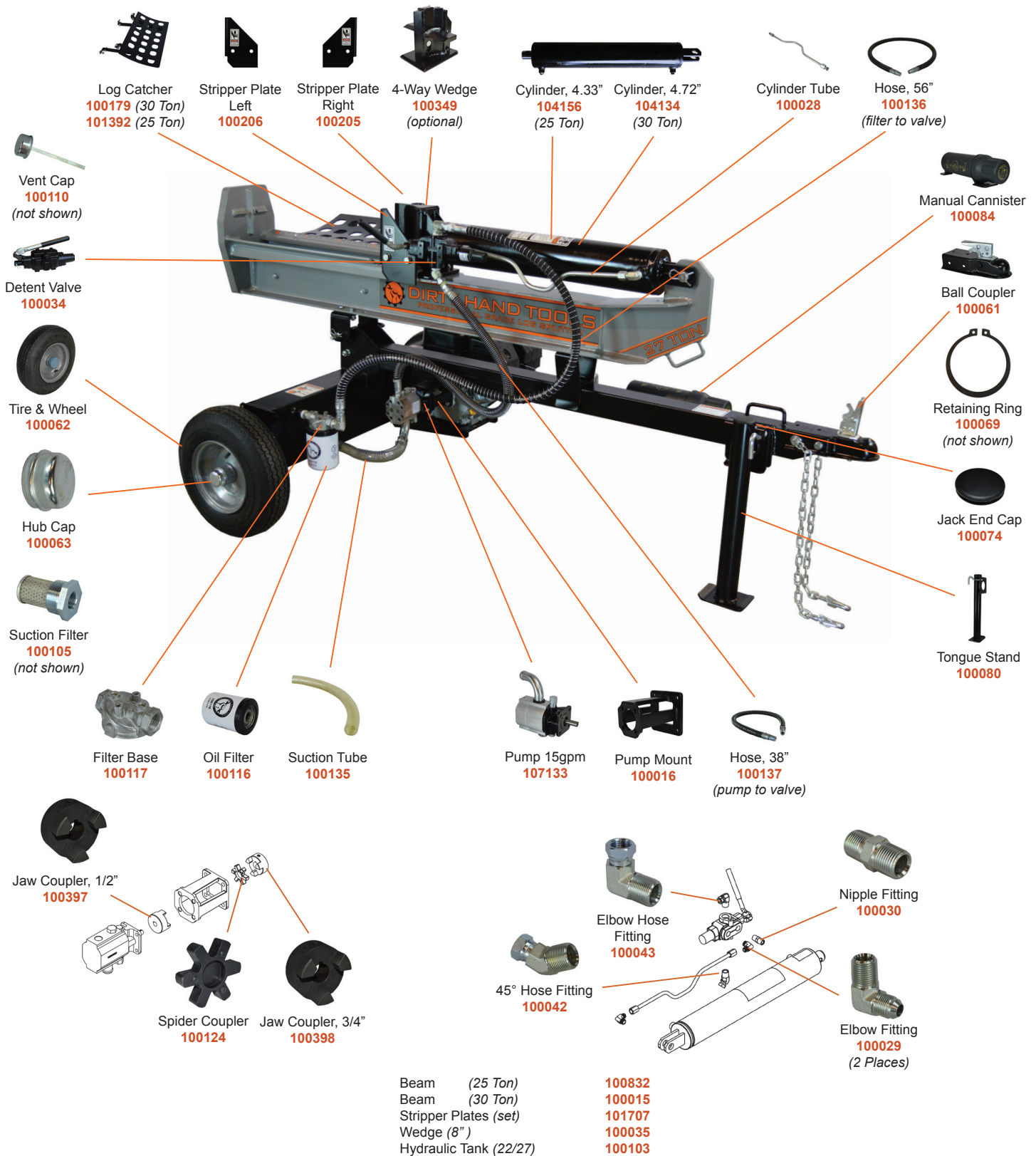
Item #	Part #	Description	Qty.
1	100832	Beam (25-Ton)	1
	106804	Beam (30-Ton)	
2	104156	Cylinder, 4.33 in., F 1/2 NPT (25-Ton)	1
	104134	Cylinder, 4.72 in., F 1/2 NPT (30-Ton)	
3	101259	Wedge, 7 in. (25-Ton)	1
	100035	Wedge, 8 in. (30-Ton)	
4	100030	Nipple, 1/2 NPT, 1/2 NPT	1
5	100034	Valve, Adjustable Detent, 3500 PSI	1
6	100029	Elbow, 1/2 NPT, 1/2 Flare Tube	2
7	100028	Tube, 1/2 OD, Flared, 3/4-16 in. Nuts	1
8	100033	Clevis Pin Assembly, 1 in. OD, w/clips	1
9	100041	Hex Bolt, M12 x 1.75 x 75mm, G8.8	1
10	100021	Hex Bolt, M12 x 1.75 x 35mm, G8.8	4
11	100181	Flat Washer, M12	4
12	100023	Lock Washer, M12	5
13	100022	Hex Nut, M12X1.75, G8.8	5
14	100043	Elbow M 3/4 NPT TO F1/2 NPT	1
15	100042	Fitting, 45°, M 3/4NPT TO F1/2NPT	1
16	100205	Stripper, RT (30-Ton only)	1
17	100206	Stripper, LT (30-Ton only)	1

Tongue Assembly



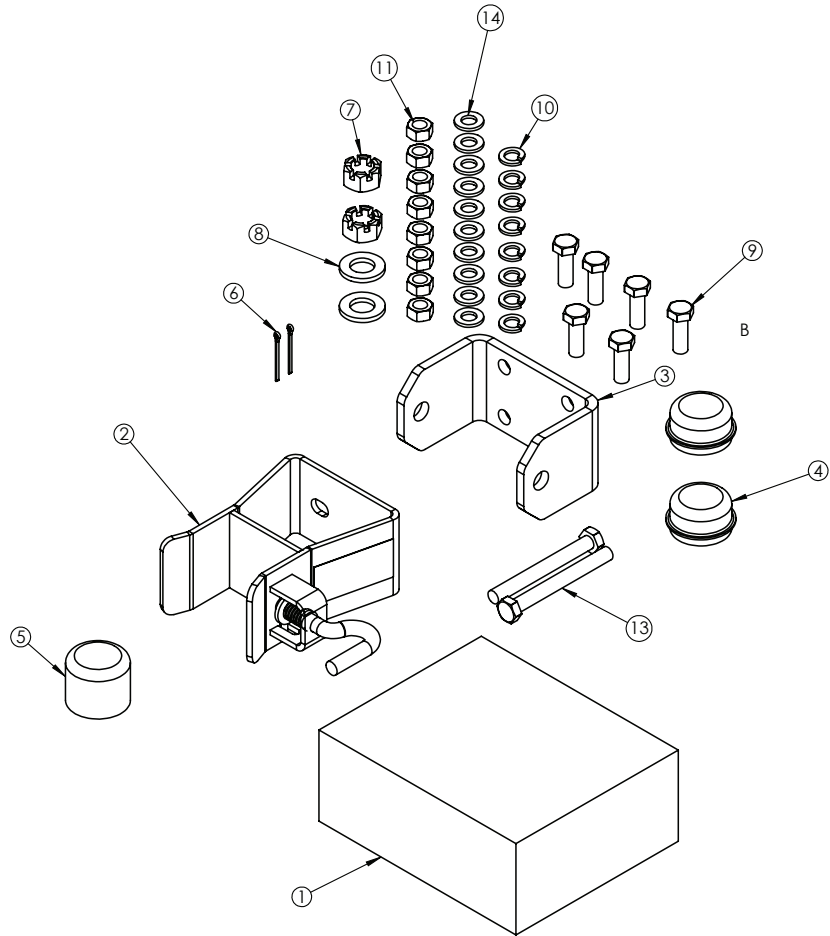
Item #	Part #	Description	Qty.
1	100050	Tongue	1
2	100061	Ball Coupler Assembly, 2 in.	1
3	100080	Tongue Stand	1
4	100084	Manual Canister	1
5	100085	Hex Bolt, M6 x 1.0 x 20mm, G8.8	3
6	100445	Fender Washer, M6	3
7	100070	Shim, OD 75mm, ID 64mm x 1mm	1
8	100069	Retaining Ring, External, 63mm Shaft	1
9	100066	Hex Bolt, M10 x 1.5 x 100mm, G8.8	1
10	100161	Flat Washer, M10	4
11	100068	Hex Nut, Nylock, M10 x 1.5, G8.8	2
12	100067	Hex Bolt, M10 x 1.5 x 120mm, G8.8	1
13	100077	Flat Washer, 1/2 in.	2
14	100047	Safety Chain	2

25/30 Ton Log Splitter Replacement Parts



For other part numbers including hardware and other components, see the Operation Manual or contact Service at 1-877-487-8275 or info@frictionlessworld.com

Hardware Kit - Part #100163

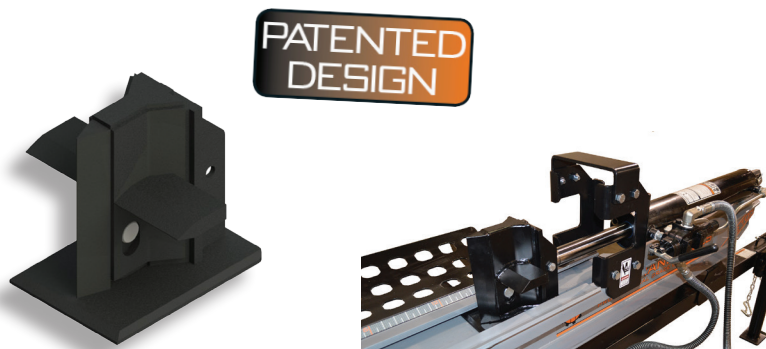


Item #	Part #	Description	Qty.
1	100166	Hardware Kit	1
2	100150	Beam Lock Assembly	1
3	100087	Beam Pivot Bracket Plate	1
4	100063	Hub Cap	2
5	100162	Hub Cap Tool	1
6	100143	Cotter Pin, 1/8 in. x 1-1/2 in.	2
7	100140	Castle Nut, 3/4 in.16	2
8	100142	Flat Washer, 3/4 in.	2
9	100021	Hex Bolt, M12 x 1.75 x 35mm, G8.8	6
10	100023	Lock Washer, M12	8
11	100022	Hex Nut, M12 x1.75, G8.8	8
12	100164	Manual, 22/27/28/35 Ton	1
13	100200	Hex Bolt, M12 x 1.75 x 110mm, G8.8	2
14	100181	Flat Washer, M12	10

Log Splitter Accessories

4-Way Wedge System

The 4-Way Wedge System replaces the existing wedge on 25 & 30-Ton Log Splitters converting them to a four way splitter for fast quarter splitting of logs. System includes stripper plates, 2-way wedge and all hardware. Fits part #'s 106264 and 106265.



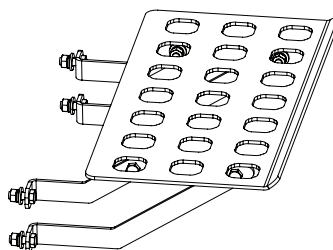
Log Splitter Cover

Weather-proof heavy duty PVC coated polyester cover easily slips over log splitter for year round outdoor protection. Water, UV and mildew resistant with convenient drawstring for fast use. Use with 25 and 30-Ton Log Splitters.

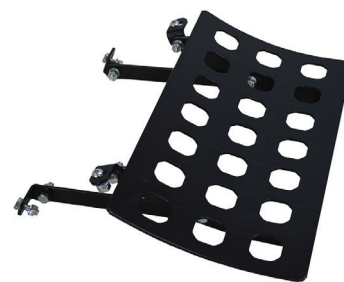


Log Catcher Kit

Quickly attaches to 25 and 30-Ton Log Splitters. Catches the split log as the cylinder and wedge retract for easier operation.



Part # 101392
(For 25-Ton)



Part # 100179
(For 30-Ton)

SKU/Part#	Description	Specification	Weight
100349	4-Way Wedge System	8.66" L x 8.86" W x 8.67" H	55 Lbs.
100506	Log Splitter Cover	90" L x 48" W x 40" H	10 Lbs.
101392	Log Catcher Assembly (25-Ton)	20.75" L x 12" W x 6" H (installed)	15 Lbs.
100179	Log Catcher Assembly (30-Ton)	20.75" L x 12" W x 6" H (installed)	15 Lbs.

Notes

This image shows a blank sheet of white paper with horizontal orange lines. The lines are evenly spaced and run across the width of the page, providing a guide for writing or drawing. There are no other markings, text, or illustrations on the page.

Specifications Vertical/Horizontal Log Splitters

SKU/Part No.	107036 (25-Ton)	107079 (30-Ton)
Maximum Splitting Force	25-Tons ¹	30-Tons ¹
Engine ²	6.5 HP 196CC ³ Kohler SH265	6.5 HP 196CC ³ Kohler SH265
Maximum Log Length	25"	25"
Cycle Time, Down & Back	11.2 Seconds ¹	14.3 Seconds ¹
Cylinder	4.33" Dia. x 24" Stroke	4.72" Dia. x 24" Stroke
Pump, Two Stage	15 GPM	15 GPM
Wedge, Heat-Treated Steel	7" High	8" High
Beam	7" Foot Plate	8" Foot Plate
Hydraulic Capacity	6.5 Gallons Max. ⁴	6.5 Gallons Max. ⁴
Shipping Weight (with Fluids)	510 Lbs.	550 Lbs.

Common Specifications

Valve	Auto Return with Adjustable Detent
Wheels	D.O.T. Approved 16" O.D. Road Tires
Coupler	2" Ball with Safety Chains
Optional Accessories	4-Way Wedge, Fenders, Storage Cover
Replacement Filters	Part # 100116 Return Filter Part # 100105 Suction Screen
Warranty	3 Year / 2 Year / 1 Year, Limited

¹Tonnage and cycle times may vary dependent upon mechanical and environmental conditions.

²EPA/CARB Approved/50 State Legal

³As rated by engine manufacturer

⁴Minimum Operational Capacity is 5 Gallons of Hydraulic Fluid

⁵Minimum Operational Capacity is 6.5 Gallons of Hydraulic Fluid

Warranty

IMPORTANT NOTICE

We, the manufacturer, reserve the right to change the product and/or specifications in this manual without notification. The manual is for information usage only and the pictures and drawings depicted herein are for reference only.

Warranty Repair and Service

Do not return this product to the store for warranty issues or repair. Call our customer service department at **720-287-5182, 1-877-487-8275**, or visit ***www.dirtyhandtools.com*** for the location of the nearest service center.

Record the information below for future reference.

Model No. _____

Serial No. _____

Date of Purchase _____

Place of Purchase _____

Dirty Hand Tools® is a brand of
 **FrictionlessWorld**
 1100 W 120th Ave., Suite 600
 Westminster, CO 80234 • 720-287-5182

For Service or Questions
Call 1-877-487-8275
720-287-5182
www.dirtyhandtools.com