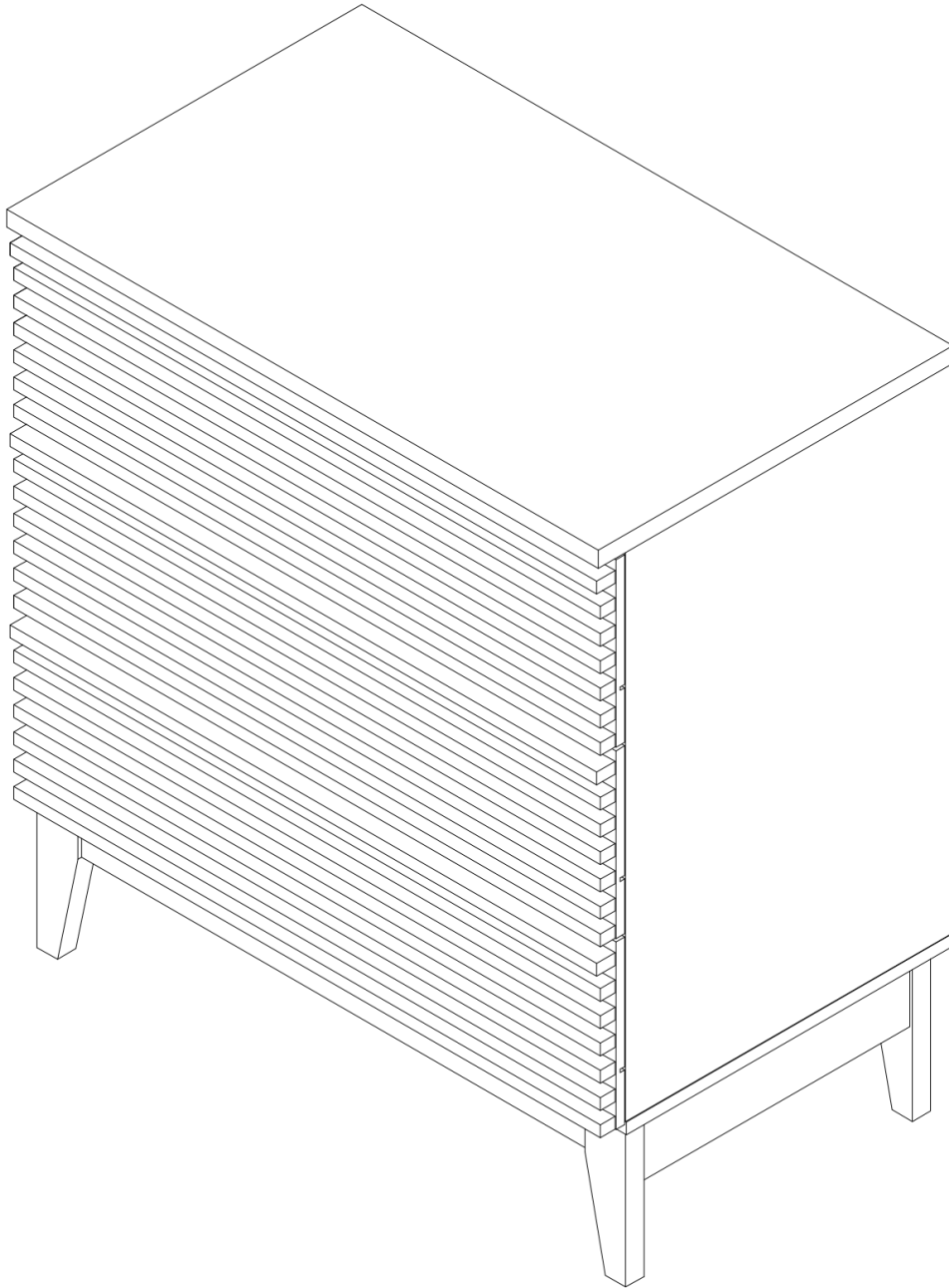


## ASSEMBLY INSTRUCTIONS

# MOD-6965-WAL

V1.01.07.21



**Questions? Contact us!**

609.256.9000 • [cs@modway.com](mailto:cs@modway.com)  
[www.modway.com](http://www.modway.com)

**\*modway**

# Let's get started!

\*modway



**Read through all of the instructions before starting**



**Care instructions are listed in the last step of this manual**



**Approx. 60 minutes assembly time**



**Make sure you have all parts and components before discarding any packing materials**



**2 people recommended for assembly**

**Only use hand tools to assemble this item.** Do not use power tools.

Do not tighten bolts or screws completely until all hardware is lined up and inserted into the holes.

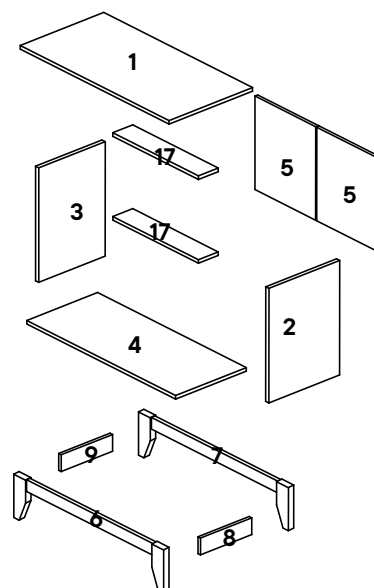
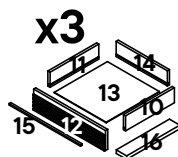
Do not over-tighten screws and bolts to avoid stripping the hardware or cracking the item.

Assemble your item on a flat, carpeted area, with plenty of space to work. This will prevent damage and scratches to your floors or the item while you're assembling the product.

Keep all components and packaging out of reach of children or animals to avoid risk of choking or suffocation.

## Furniture components:

1	Top Panel	x1	10	Drawer Right	x3
2	Right Side Panel	x1	11	Drawer Left	x3
3	Left Side Panel	x1	12	Drawer Head	x3
4	Bottom Panel	x1	13	Drawer Base	x3
5	Back Panel	x2	14	Drawer Back	x3
6	Front Leg Panel	x1	15	Drawer Handle	x3
7	Back Leg Panel	x1	16	Drawer Support	x3
8	Right Leg Support	x1	17	Body Support	x2
9	Left Leg Support	x1			



## Provided hardware:

A		JCBC M6 x 80mm	x4	J		Drawer Runner Right	x3
B		Wooden Dowel Ø6 x 30mm	x66	K		JCBC M6 X 60mm	x4
C		Cam Lock- Ø15 x 12mm	x20	L		Cam Lock- Ø12 x 9.9mm	x9
D		Cam Bolt- Ø6 x 32mm	x29	M		Anti-Tipping Kit	x1
E		Floor Glide-B321	x4	N		JCBCW M6 x 50mm	x4
F		C/board Screw Ø3.5 x 16mm	x46	O		C/board Screw Ø4 x 25mm	x9
G		C/board Runner Left	x3	P		C/board Screw Ø4 x 38mm	x9
H		C/board Runner Right	x3	Q		Allen Key	x1
I		Drawer Runner Left	x3	R		Wooden Dowel Ø6 x 25mm	x9

## What you need:



**Wait!**

**Missing parts or hardware? Need assistance?**

Contact us before returning your item. We're here to help!

609.256.9000 • [cs@modway.com](mailto:cs@modway.com)

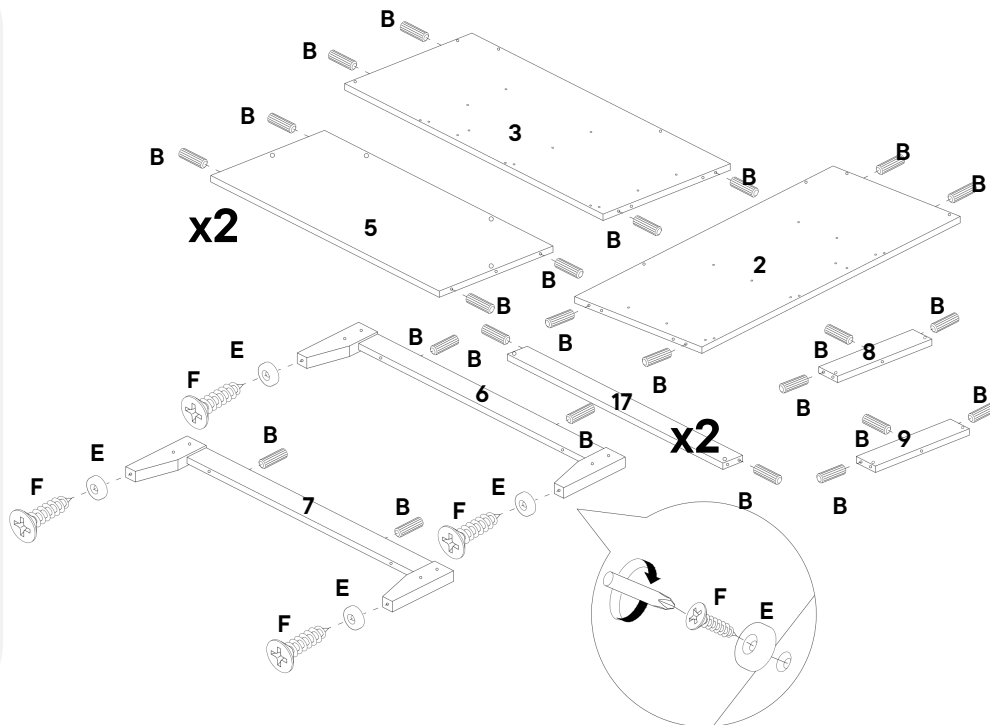
# Step 1

## HARDWARE

- B** Wooden Dowel Ø6 x 30mm x30
- E** Floor Glide-B321 x4
- F** C/board Screw Ø3.5 x 16mm x4

## COMPONENTS

- 2** Right Side Panel x1
- 3** Left Side Panel x1
- 5** Back Panel x2
- 6** Front Leg Panel x1
- 7** Back Leg Panel x1
- 8** Right Leg Support x1
- 9** Left Leg Support x1
- 17** Body Support x2



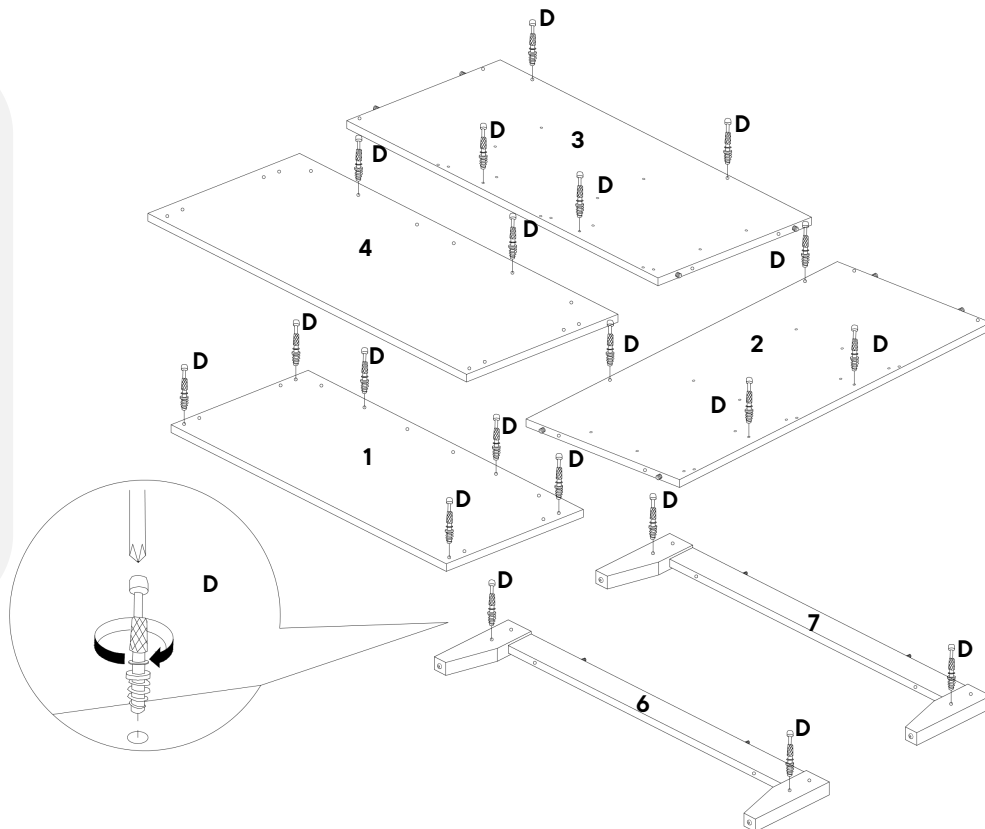
# Step 2

## HARDWARE

- D** Cam Bolt- Ø6 x 32mm x20

## COMPONENTS

- 1** Top Panel x1
- 2** Right Side Panel x1
- 3** Left Side Panel x1
- 4** Bottom Panel x1
- 6** Front Leg Panel x1
- 7** Back Leg Panel x1



## Step 3

### HARDWARE

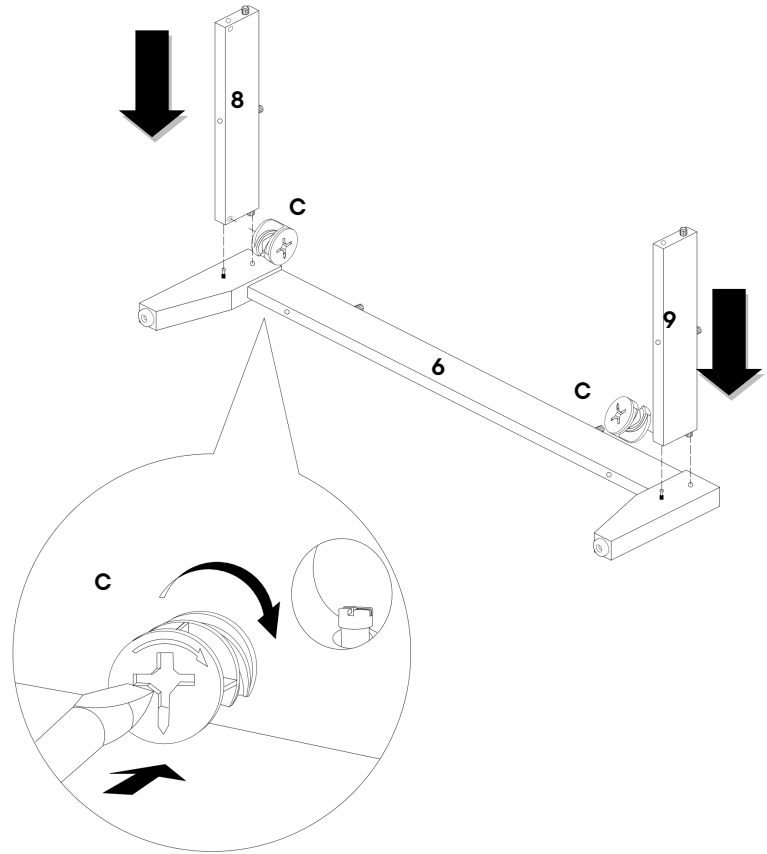
**C** Cam Lock- Ø15 x 12mm x2

### COMPONENTS

**6** Front Leg Panel x1

**8** Right Leg Support x1

**9** Left Leg Support x1



## Step 4

### HARDWARE

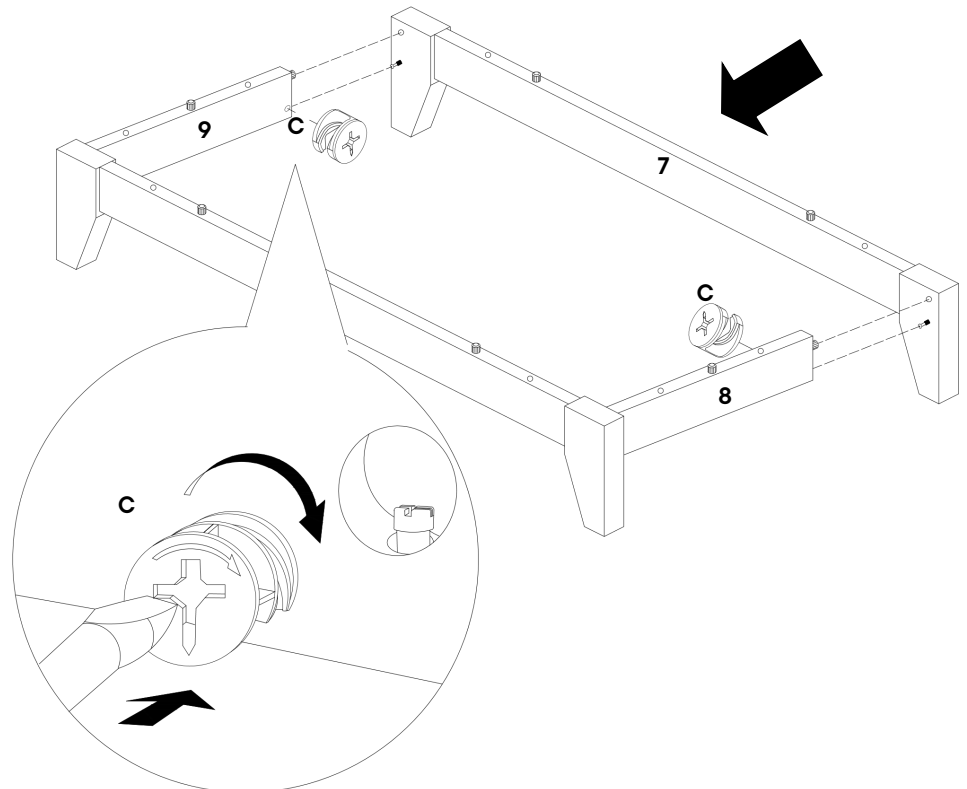
**C** Cam Lock- Ø15 x 12mm x2

### COMPONENTS

**7** Back Leg Panel x1

**8** Right Leg Support x1

**9** Left Leg Support x1



# Step 5

## HARDWARE

**F** C/board Screw Ø3.5 x 16mm x24

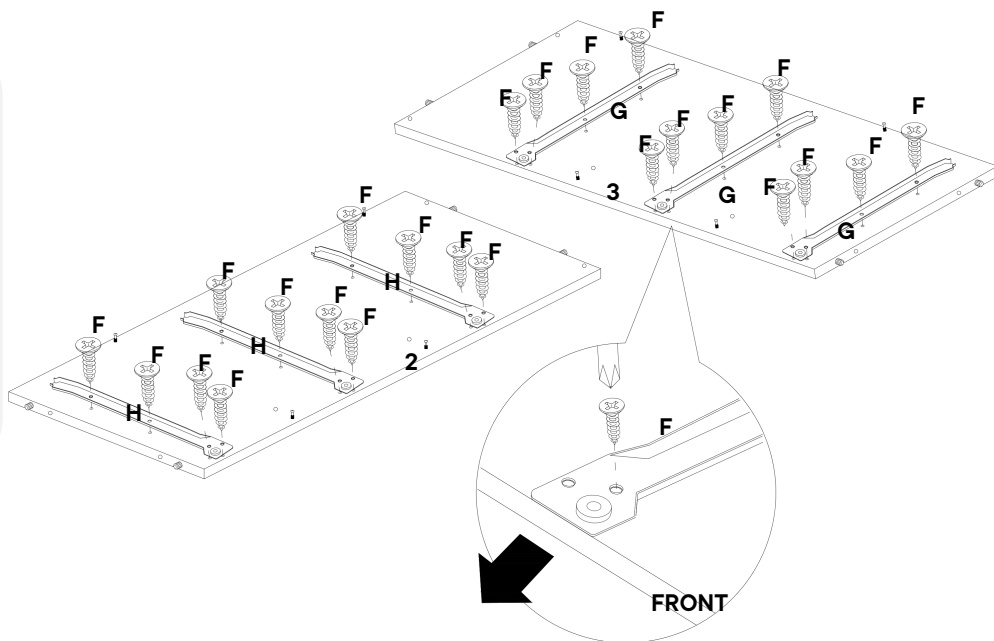
**G** C/board Runner Left x3

**H** C/board Runner Right x3

## COMPONENTS

**2** Right Side Panel x1

**3** Left Side Panel x1



# Step 6

## HARDWARE

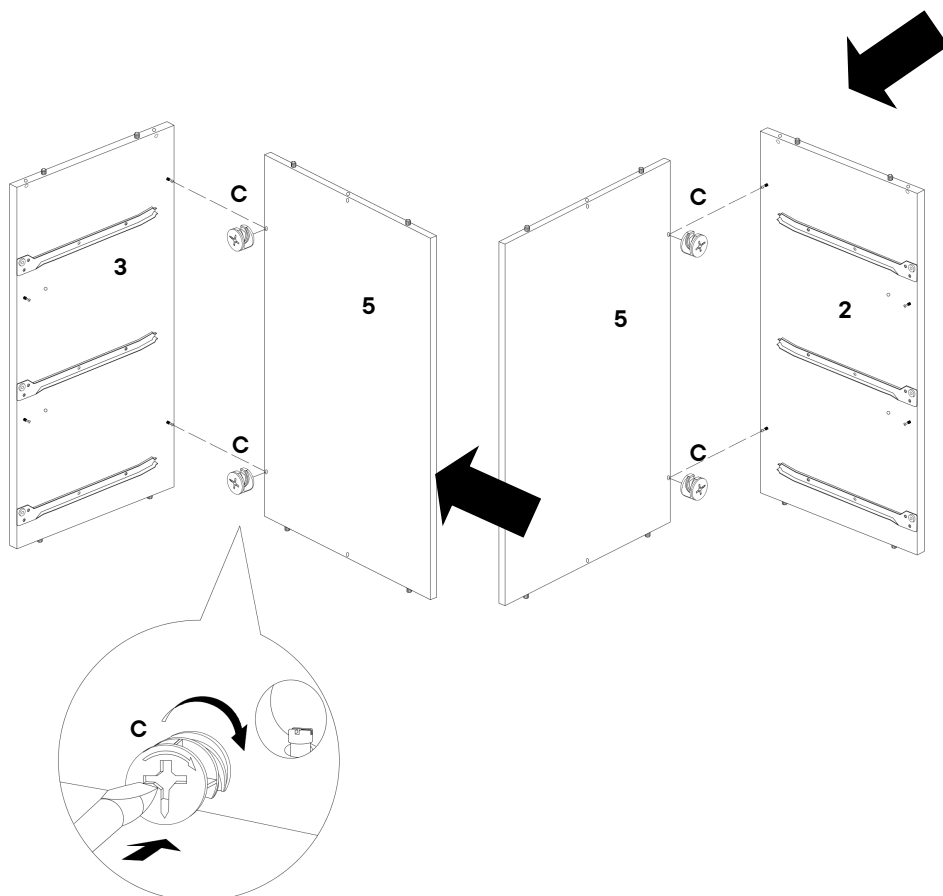
**C** Cam Lock- Ø15 x 12mm x4

## COMPONENTS

**2** Right Side Panel x1

**3** Left Side Panel x1

**5** Back Panel x2



# Step 7

## HARDWARE

**C** Cam Lock- Ø15 x 12mm x4

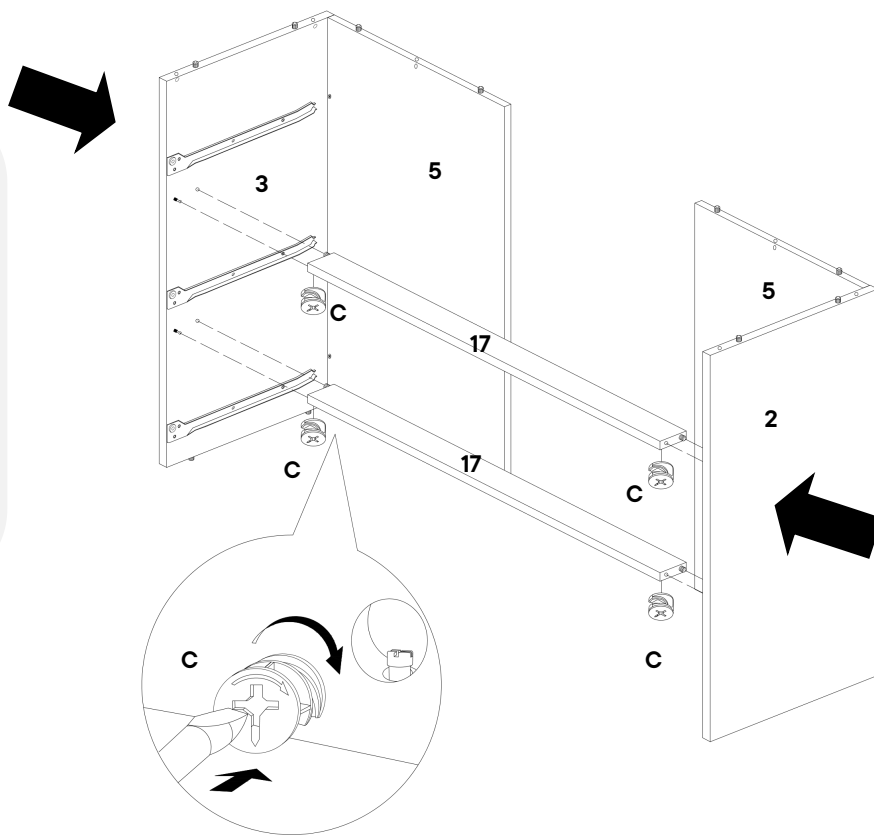
## COMPONENTS

**2** Right Side Panel x1

**3** Left Side Panel x1

**5** Back Panel x2

**17** Body Support x2



# Step 8

## HARDWARE

**C** Cam Lock- Ø15 x 12mm x2

**N** JCBCW M6 x 50mm x4

**Q** Allen Key x1

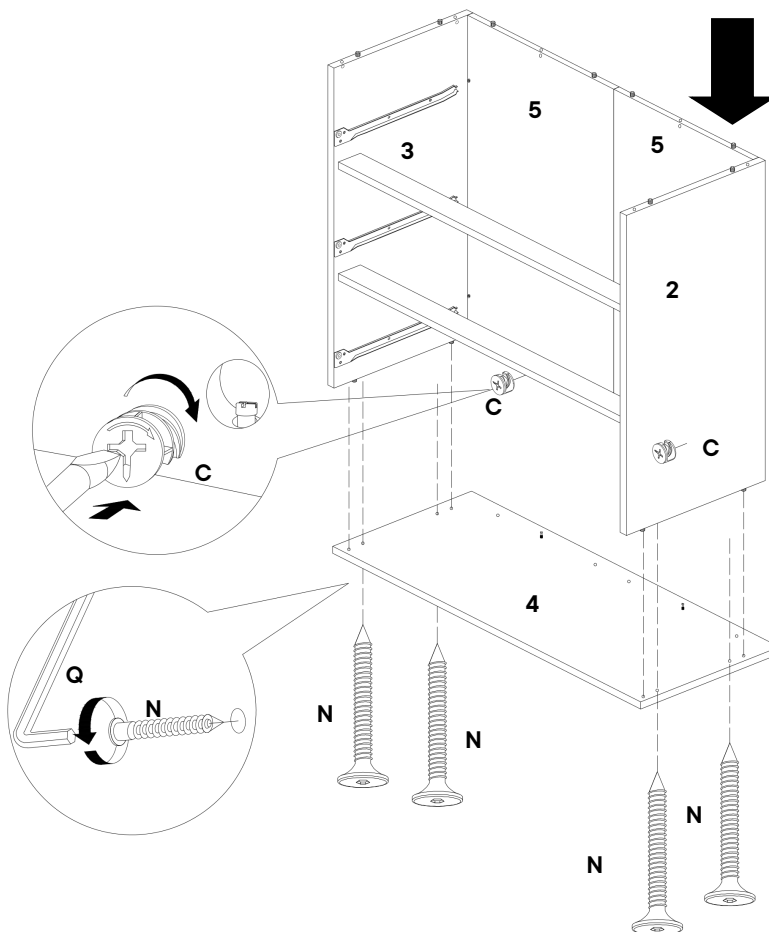
## COMPONENTS

**2** Right Side Panel x1

**3** Left Side Panel x1

**4** Bottom Panel x1

**5** Back Panel x2



# Step 9

## HARDWARE

**C** Cam Lock- Ø15 x 12mm x6

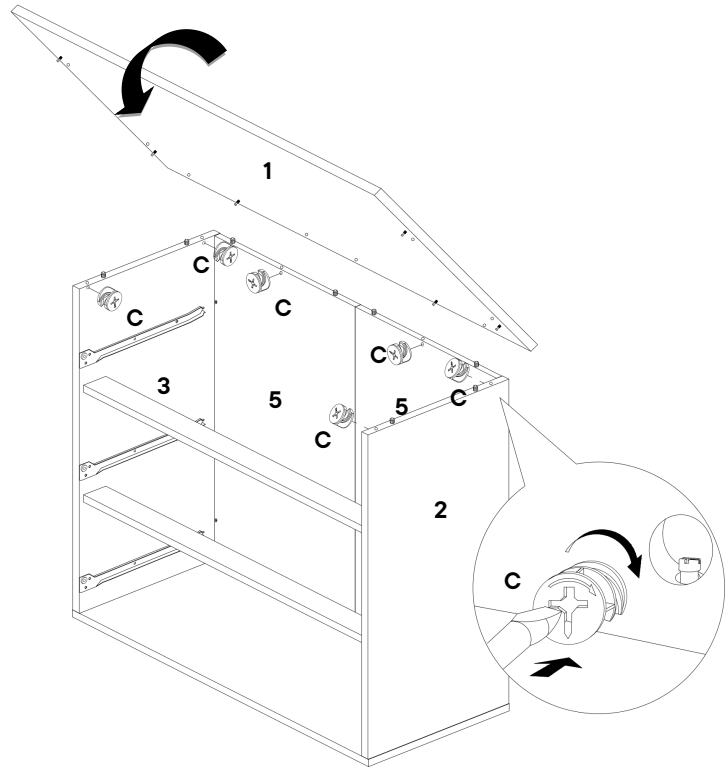
## COMPONENTS

**1** Top Panel x1

**2** Right Side Panel x1

**3** Left Side Panel x1

**5** Back Panel x2



# Step 10

## HARDWARE

**A** JCBC M6 x 80mm x4

**K** JCBC M6 x 60mm x4

**Q** Allen Key x1

## COMPONENTS

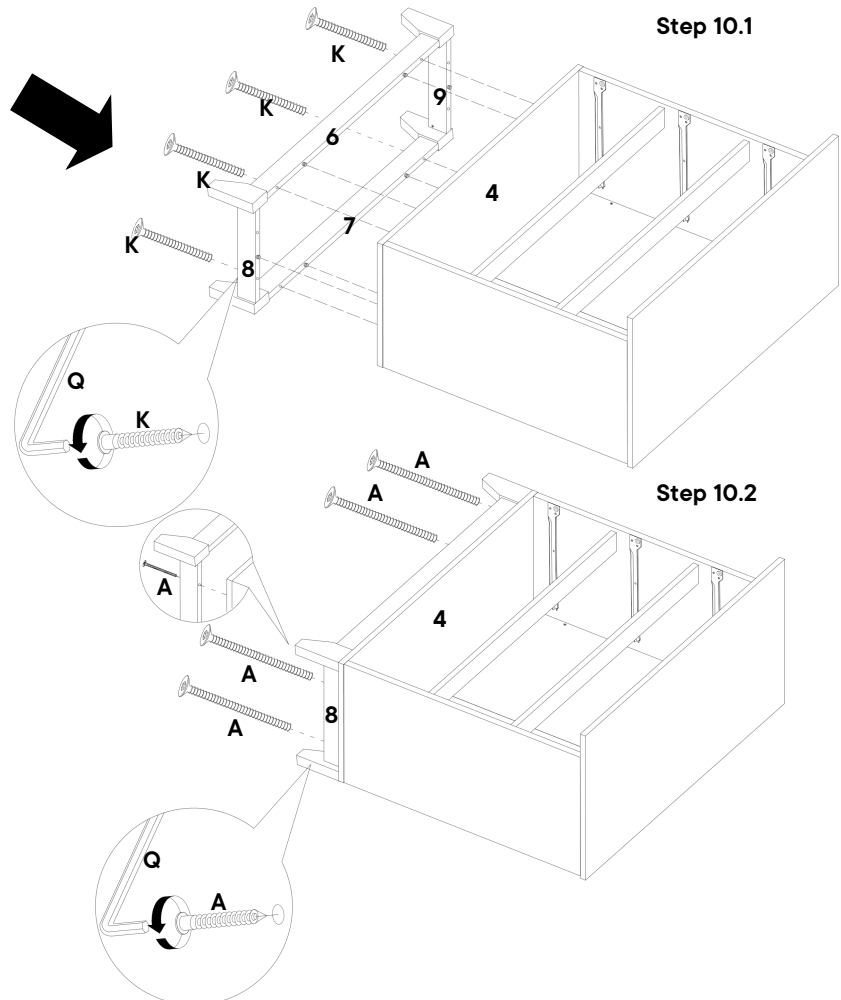
**4** Bottom Panel x1

**6** Front Leg Panel x1

**7** Back Leg Panel x1

**8** Right Leg Support x1

**9** Left Leg Support x1



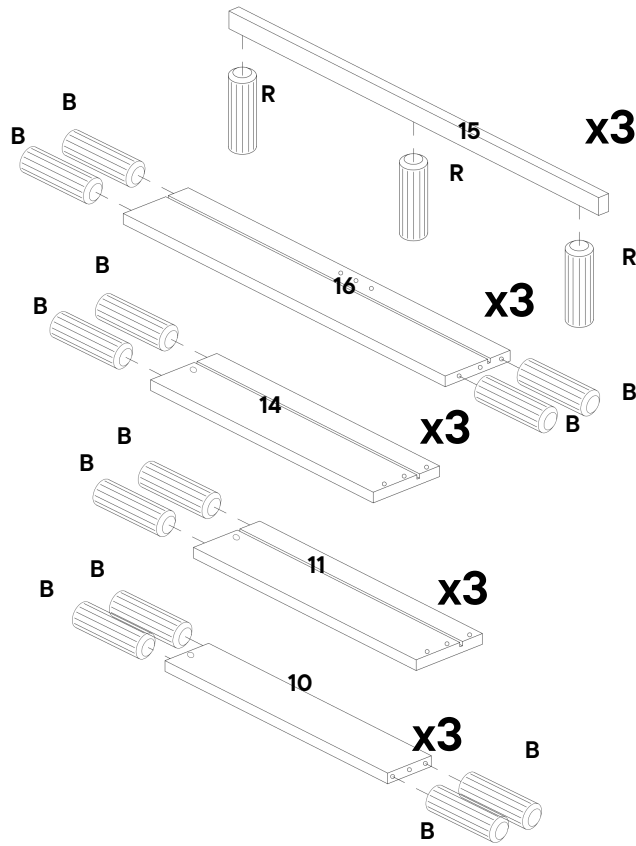
# Step 11

## HARDWARE

- B** Wooden Dowel Ø6 x 30mm x36
- R** Wooden Dowel Ø6 x 25mm x9

## COMPONENTS

- 10** Drawer Right x3
- 11** Drawer Left x3
- 14** Drawer Back x3
- 15** Drawer Handle x3
- 16** Drawer Support x3



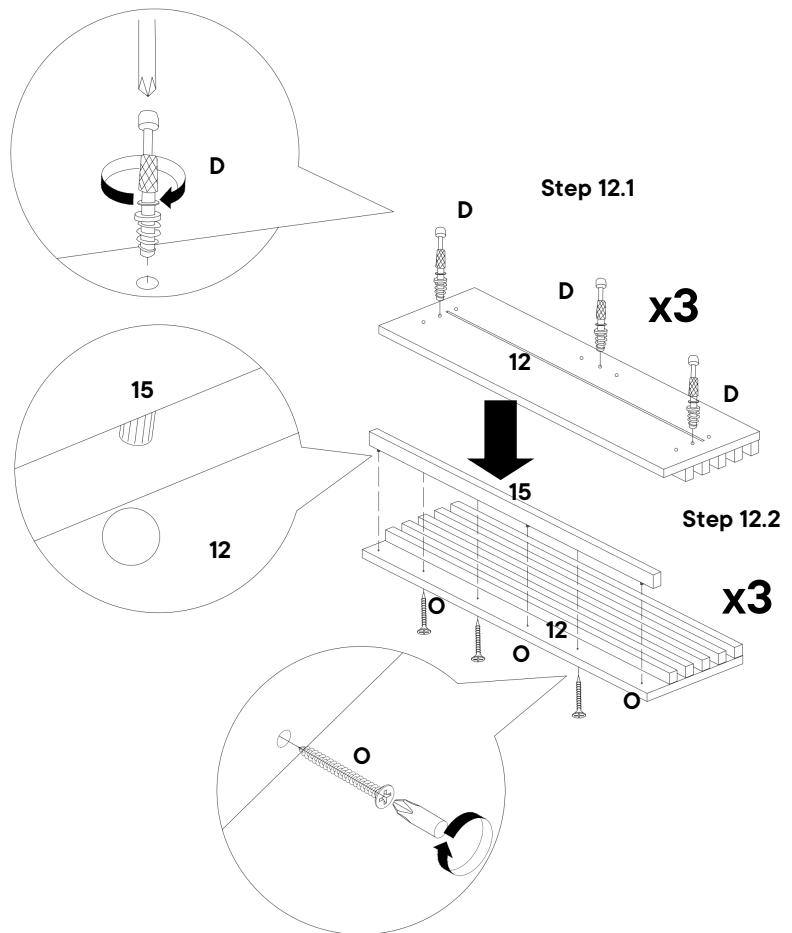
# Step 12

## HARDWARE

- D** Cam Bolt- Ø6 x 32mm x9
- O** C/board Screw Ø4 x 25mm x9

## COMPONENTS

- 12** Drawer Head x3
- 15** Drawer Handle x3



# Step 13

## HARDWARE

**P** C/board Screw  $\varnothing 4 \times 38\text{mm}$  x9

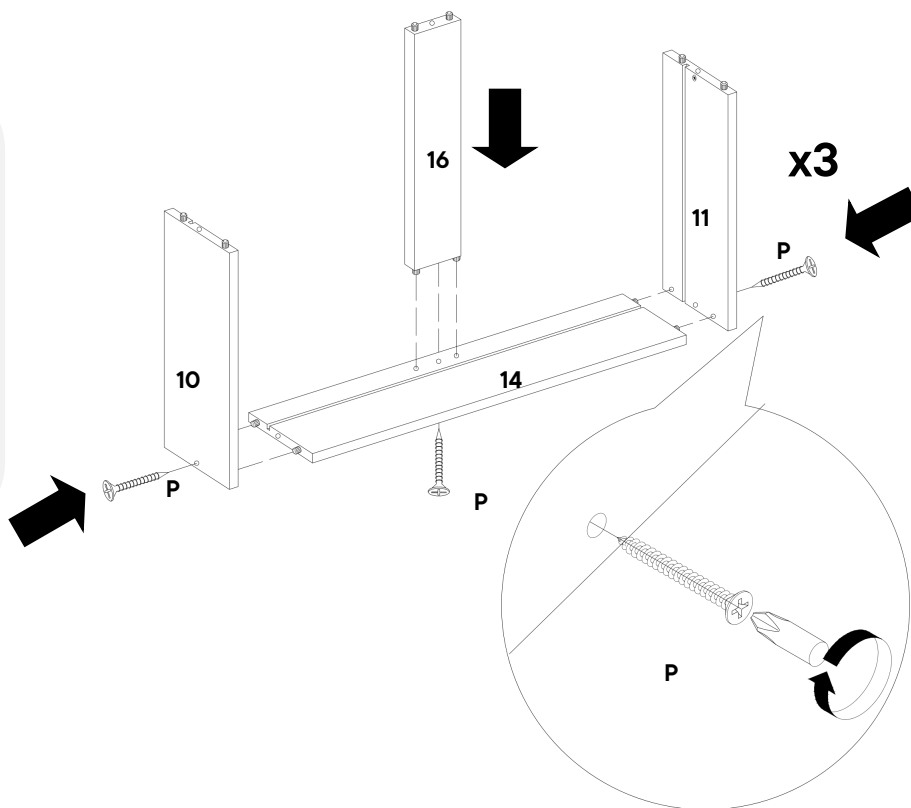
## COMPONENTS

**10** Drawer Right x3

**11** Drawer Left x3

**14** Drawer Back x3

**16** Drawer Support x3



# Step 14

## HARDWARE

**L** Cam Lock-  $\varnothing 12 \times 9.9\text{mm}$  x9

## COMPONENTS

**10** Drawer Right x3

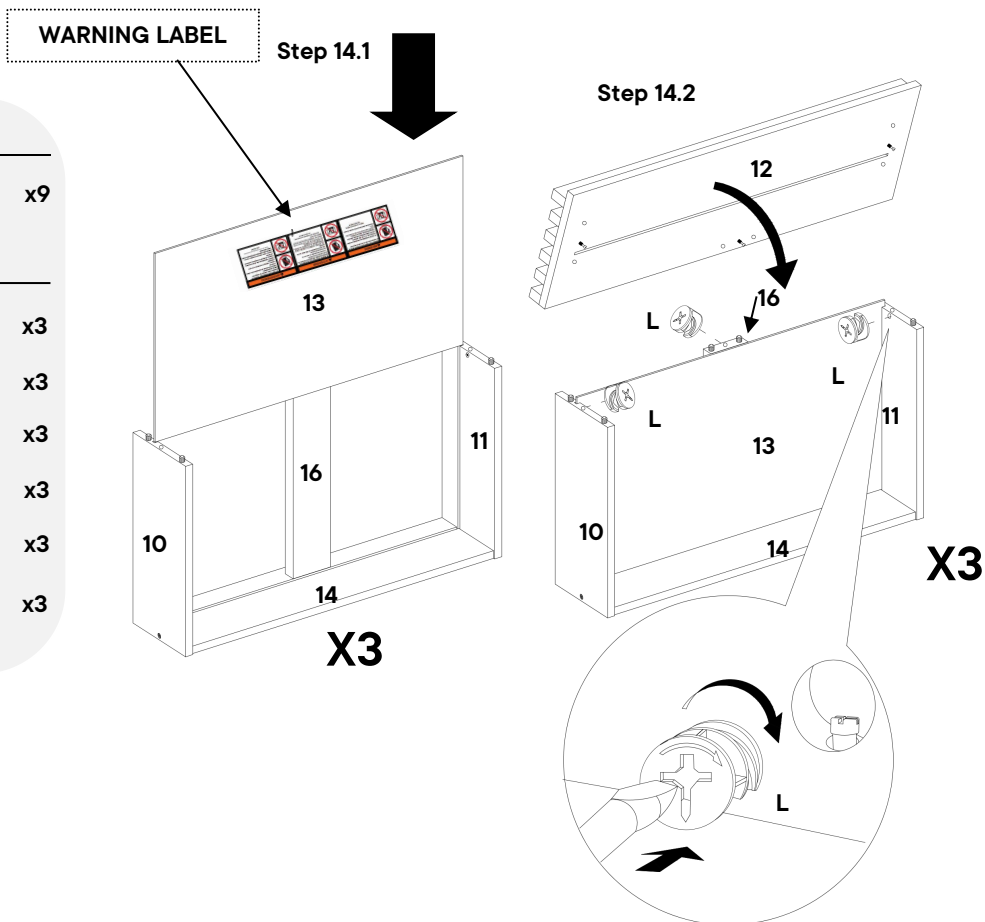
**11** Drawer Left x3

**12** Drawer Head x3

**13** Drawer Base x3

**14** Drawer Back x3

**16** Drawer Support x3



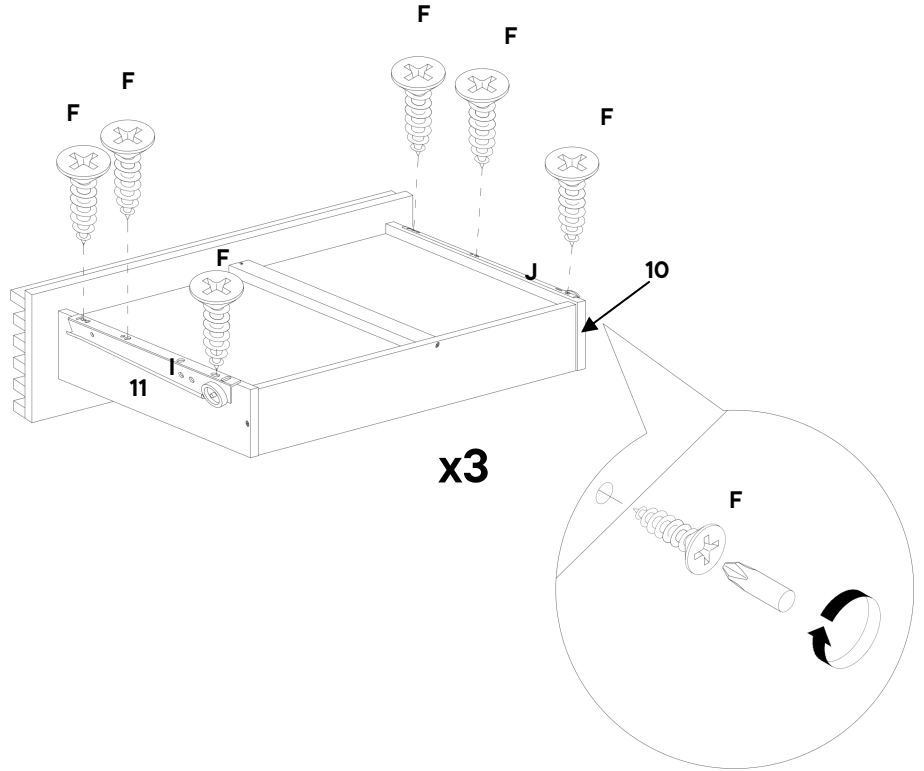
# Step 15

## HARDWARE

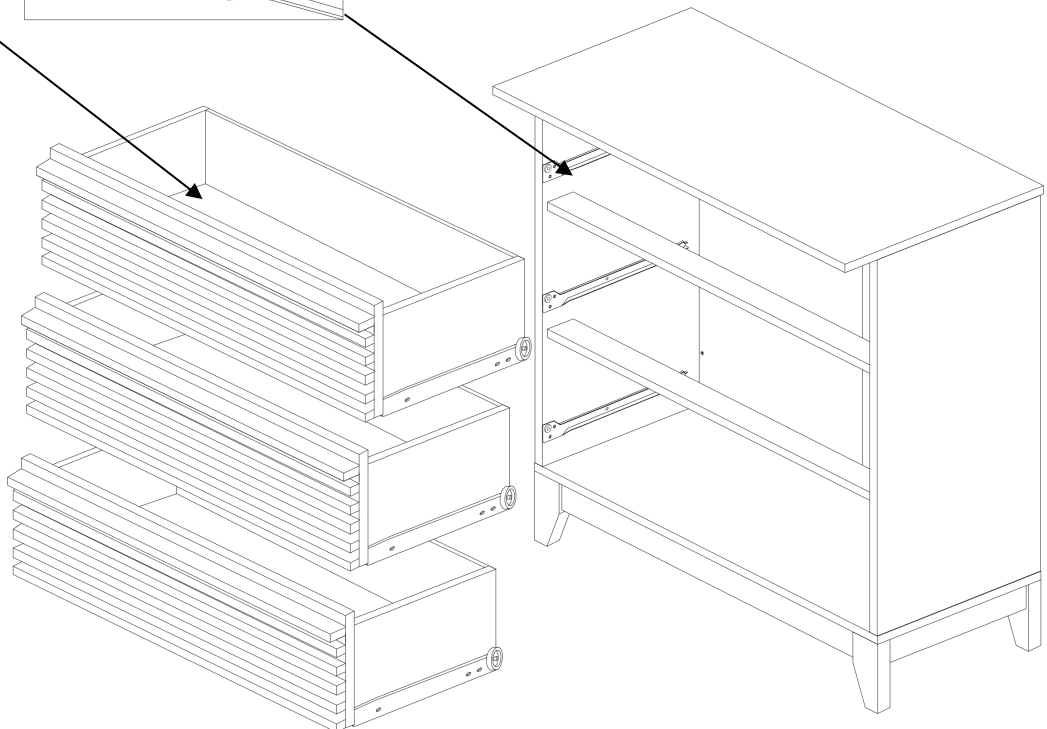
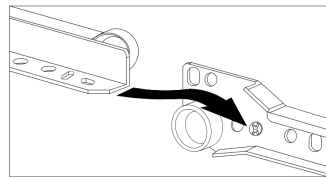
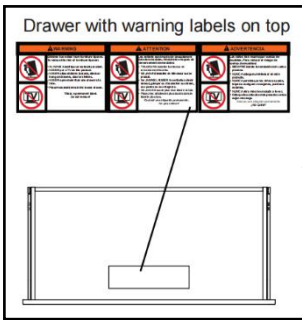
- F** C/board Screw Ø3.5 x 16mm x18
- I** Drawer Runner Left x3
- J** Drawer Runner Right x3

## COMPONENTS

- 10** Drawer Right x3
- 11** Drawer Left x3



# Step 16



# Great job!

Drawer Chest assembly is complete.

## ♥ CARING FOR YOUR ITEM

Indoor use only.

Not contract grade.

Clean using a non-abrasive cloth and a mild cleaner.

Never use harsh chemicals, as they could damage the finish or integrity of the item.

## CONNECT WITH US!

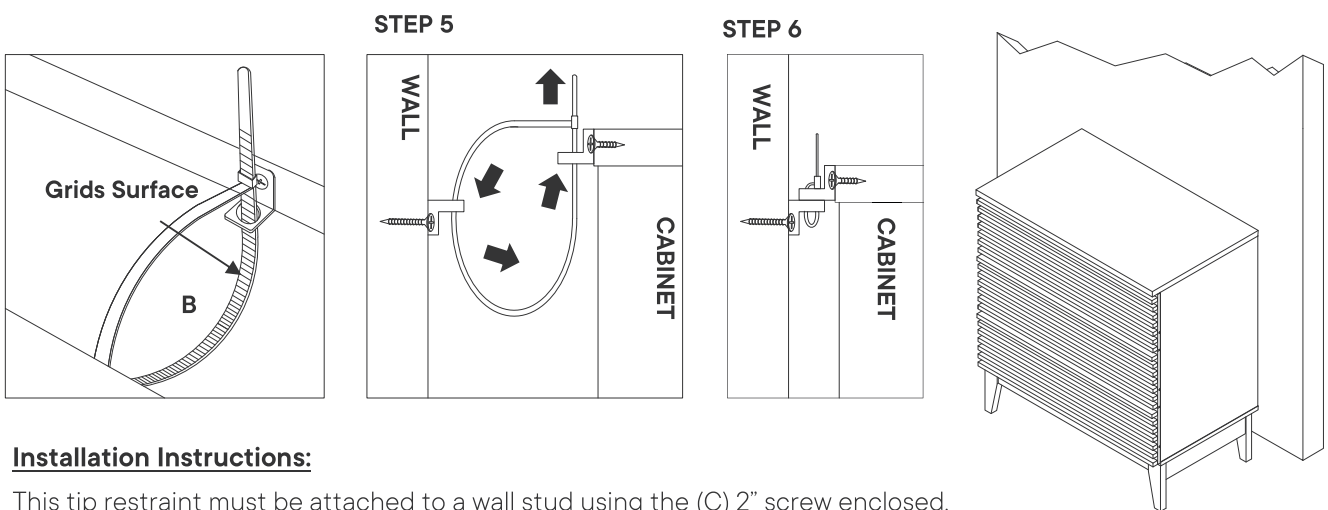
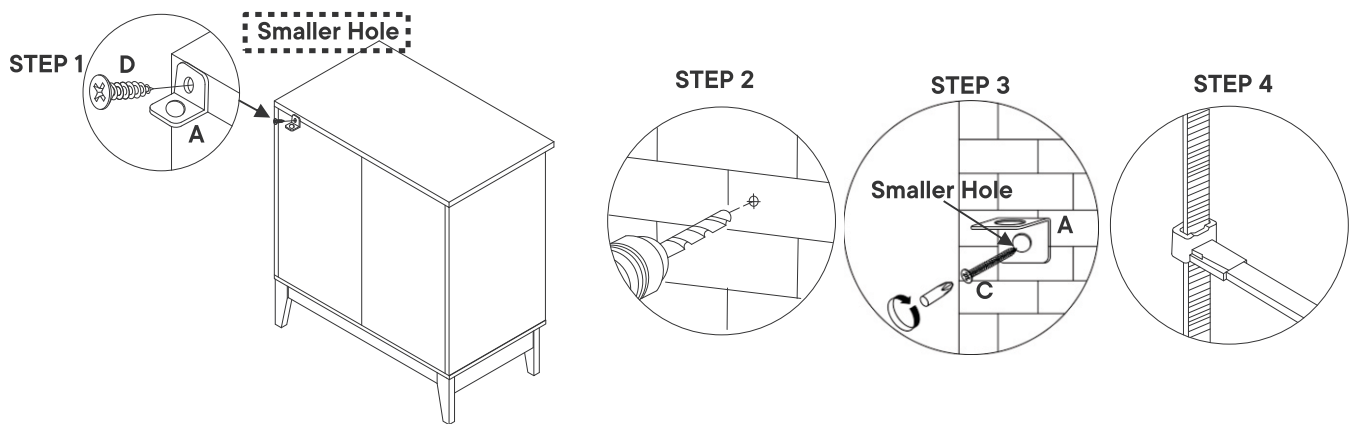
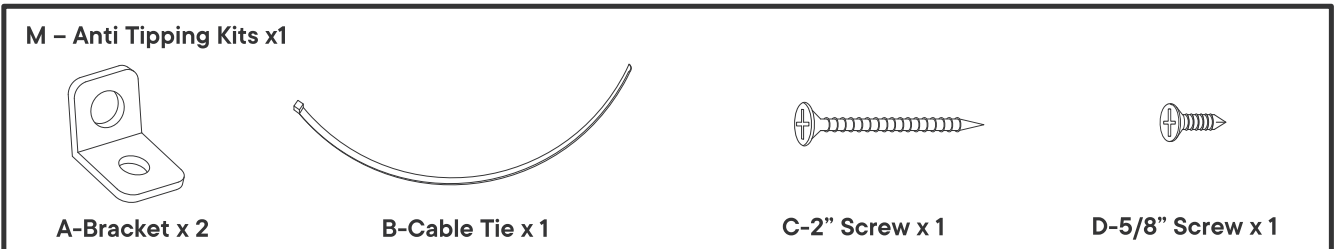
Tag us **@modway\_furniture** and **#modway** for a chance to be featured.



# TIPPING RESTRAINTS KIT INSTALLATION GUIDANCE

Different wall materials require unique wall fasteners.

Please consult your local hardware store to ensure you are using the correct hardware for your wall type



**Installation Instructions:**

This tip restraint must be attached to a wall stud using the (C) 2" screw enclosed.

1. Attach a bracket (A) securely to the back top rail of the furniture using the 5/8" screw (D) provided, through the smaller hole.
2. Locate the other bracket (A) on the wall over a wall stud and 2 inches below the mounting bracket secured to the back of your unit. Attach to the wall stud using the (C) 2" screw provided, through the smaller hole.
3. Place the furniture into position so both mounting brackets are vertically in line.
4. Lace the end of the restraint strap (B) through the larger hole in each mounting bracket. Bring both ends together and slide the flat end through the locking end and draw it through until all slack is removed.
5. Confirm that the strap (B) is securely laced and locked.