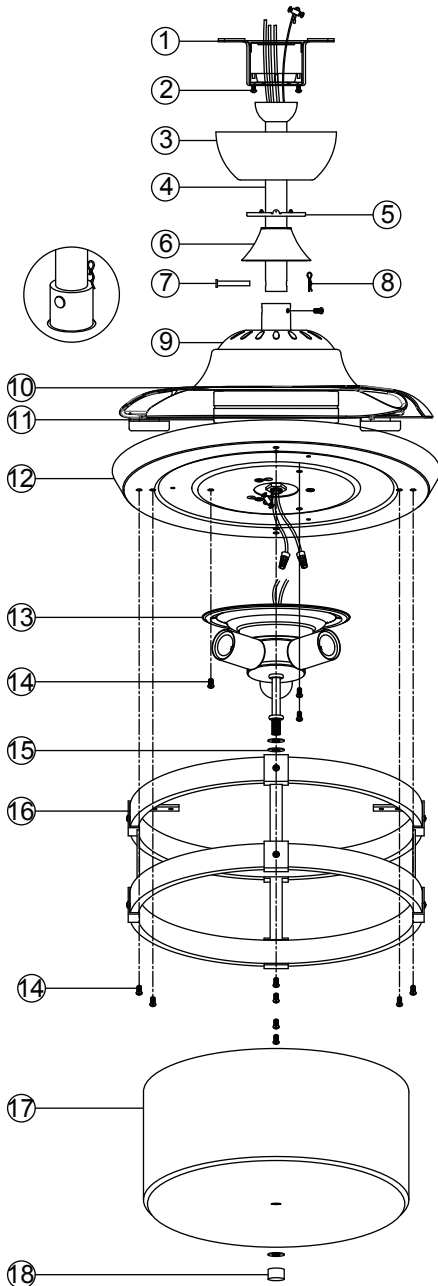
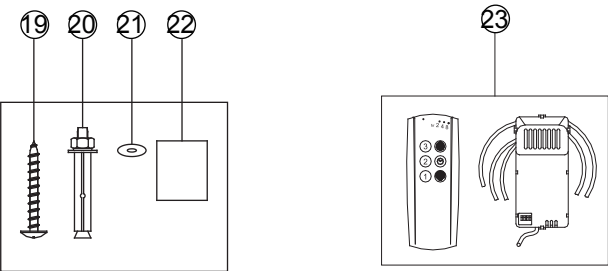


BEFORE INSTALLATION

Unpack your fan and check the contents.You should have followings:



- 1. Mounting Bracket
- 2. Canopy screws
- 3. Canopy
- 4. Downrod&hanger ball
- 5. Canopy cover
- 6. Coupling cover
- 7. Bolt
- 8. Lock pin
- 9. Top housing
- 10. Blades
- 11. Fan motor assembly
- 12. Base plate
- 13. Light kit
- 14. Light and Lampshade screws
- 15. Washers
- 16. Lampshade
- 17. Glass
- 18. Garnish nuts
- 19. Wood screws
- 20. Expansion screws
- 21. Screw washesr
- 22. Balance tapes
- 23. Remote control set

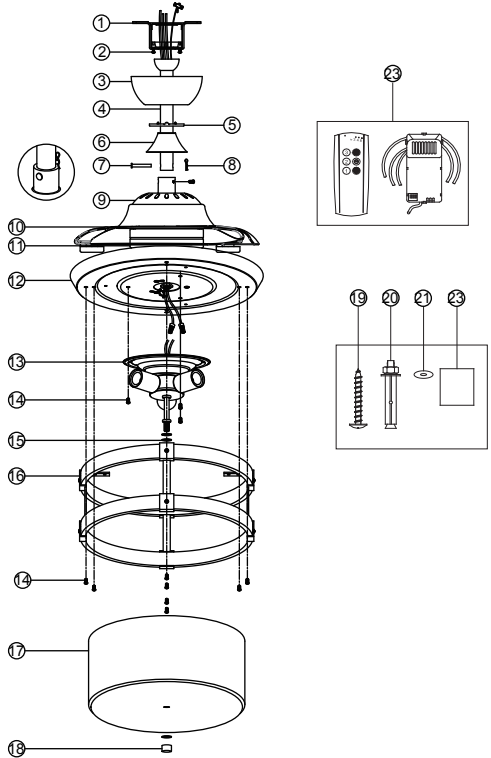


THANK YOU FOR YOUR PURCHASE

Thank you for purchasing this quality product.To ensure correct function and safety, please read and save all instructions before using the product

BEFORE INSTALLATION

Unpack your fan and check the contents.You should have followings:



- 1. Mounting Bracket
- 2. Canopy screws
- 3. Canopy
- 4. Downrod&hanger ball
- 5. Canopy cover
- 6. Coupling cover
- 7. Bolt
- 8. Lock pin
- 9. Top housing
- 10. Blades
- 11. Fan motor assembly
- 12. Base plate
- 13. Light kit
- 14. Light and Lampshade screws
- 15. Washers
- 16. Lampshade
- 17. Glass
- 18. Garnish nuts
- 19. Wood screws
- 20. Expansion screws
- 21. Screw washers
- 22. Balance tapes
- 23. Remote control set

CAUTION

READ INSTRUCTIONS CAREFULLY FOR SAFE
INSTALLATION AND FAN OPERATION. IF UNSURE CONSULT
A QUALIFIED ELECTRICIAN



SAFETY RULES

- 1. To reduce the risk of electric shock, insure electricity has been turned off at the circuit breaker or fuse box before beginning.
- 2. All wiring must be in accordance with the National Electrical Code and local electrical codes. Electrical installation should be performed by a qualified licensed electrician.
- 3. **WARNING:** To reduce the risk of electrical shock and fire, do not use this fan with any solid-state fan speed control device.
- 4. **WARNING:** To reduce the risk of fire, electric shock, or personal injury,mount to outlet box marked "Acceptable for Fan Support of 45kg (99.12 lbs.) Or Less" and use mounting screws provided with the outlet box. Most outlet boxes commonly used for the support of light fixtures are not acceptable for fan support and may need to be replaced. Due to the complexity of the installation of this fan, a qualified licensed electrician is strongly recommended.
- 5. The outlet box and support structure must be securely mounted and capable of reliably supporting a minimum of 45KGS. Use only UL Listed outlet boxes marked FOR FAN SUPPORT.
- 6. The fan must be mounted with a minimum of 7 feet clearance from the trailing edge of the blades to the floor.
- 7. Avoid placing objects in the path of the blades.
- 8. To avoid personal injury or damage to the fan and other items, be cautious when working around or cleaning the fan.
- 9. Do not use water or detergents when cleaning the fan or fan blades. A dry dust cloth or lightly dampened cloth will be suitable for most cleaning.
- 10. After making electrical connections, spliced conductors should be turned upward and pushed carefully up into the outlet box. The wires should be spread apart with the grounded conductor and the equipment-grounding conductor on one side of the outlet box.
- 11. Electrical diagrams are for reference only.
- 12. The fan is suitable for indoor use only.
- 13. **Please do not use the fan in a specific environment like high temperature environment. high radiation environment.lampblack or other abnormal use environments.**

TECHNICAL INFORMATION

SKU	Rated Voltage	Rated power(motor)	Light CCT.
F3506	110-120V AC	34W	E26 3*25W(MAX.) EXCLUDE

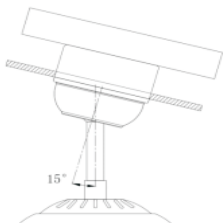
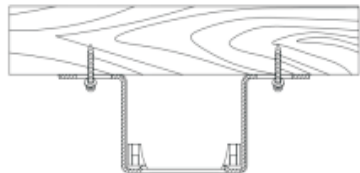
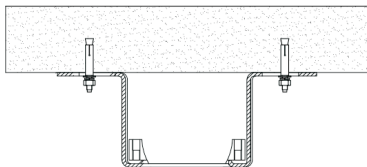
INSTALLING THE FAN

Tools Required: Phillips screwdriver , Pair of pliers, straight slot screwdriver , adjustable wrench, step ladder , and wire cutters.

INSTALLING THE MOUNTING BRACKET

The ceiling fan must be installed in a location so that the blades are 300mm spacing from the tip of the blade to the nearest objects or walls. When hanging the Fan REMEMBER to turn off the power. Follow the instruction below to hang your fan properly:

- 1. For the concrete ceiling, drill two holes in the ceiling and secure the mounting bracket to the ceiling with two Φ8(distance between the two holes should be appropriate) expansion screws, flat washers,nuts provided and tighten with a spanner.
- 2. For the wood ceiling, Secure the mounting bracket to the ceiling is capable of carrying a load of at least 45KGS with two long mounting screws and washers provided. Be sure at least 30mm of the screw is threaded into the support.
- 3. Refer to the Fig. in right for mounting when the ceiling is angled max. 15 degree angle.



NOTE:Hanger after the installation must be able to withstand the weight of 45kg or more.

WARNING: SHUT POWER OFF AT FUSE OR CIRCUIT BREAKER