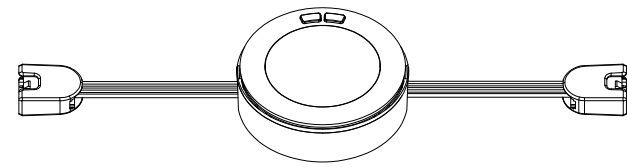




Installation Guide

Undercabinet Fixture 5CCT Puck Lights



www.gelighting.com
GE is a trademark of General Electric Company. Used under trademark license.
©2024 Savant Technologies LLC. Information provided is subject to change without notice.
All values are design or typical values when measured under laboratory conditions.

IMPORTANT SAFETY INSTRUCTIONS

This portable luminaire has a polarized plug (one blade is wider than the other) as a feature to reduce the risk of electric shock. This plug will fit in a polarized outlet only one way. If the plug does not fit fully in the outlet, reverse the plug. If it still does not fit, contact a qualified electrician. Never use with an extension cord unless plug can be fully inserted. Do not alter the plug.

PRODUCT COVERED

Model	Input voltage (Vac , Hz)	Current (mA)	Wattage (W)
UNCPK03PJ030D95CWTLDS	120 , 60	60	5

DIMMING

The luminaire is dimmable with most regular dimmers.



BEFORE YOU BEGIN

Read these instructions completely and carefully.

WARNING

- Risk of fire or electric shock. Installation requires knowledge of luminaire electrical systems. If not qualified, do not attempt installation. Contact a qualified electrician.
- To prevent wiring damage or abrasion, do not expose wiring to edges of sheet metal or other sharp objects.
- This device is not intended for use with emergency exits.
- These products are intended to be used in dry or damp locations.

PREPARE ELECTRICAL WIRING

Electrical Requirements

The LED fixture must be supplied with 120VAC 60Hz.

Grounding Instructions

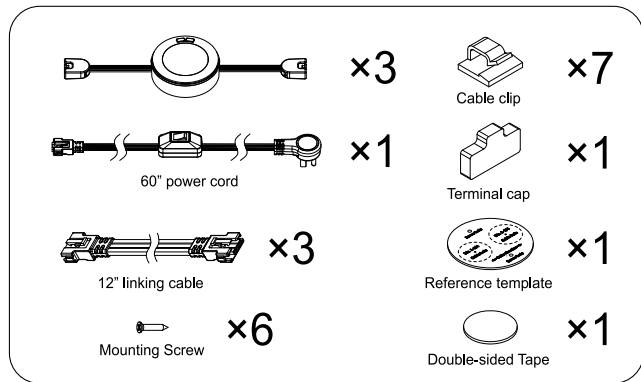
The grounding and bonding of the overall system shall be done in accordance with National Electric Code (NEC) Article 600 and local codes.

Risk of Damage: Use UL approved conduit fittings for all enclosure box connections to prevent damage to the wire insulation by sharp edges and excessive strain on wiring.

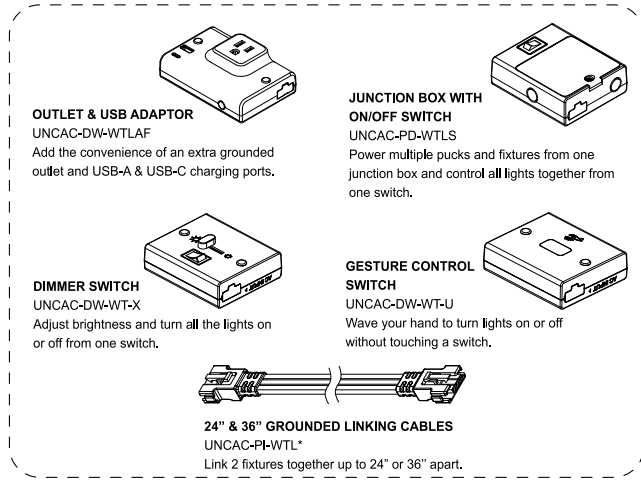
▲ CAUTION To reduce the risk of fire, electric shock, or injury to persons:

- Use only insulated staples or plastic ties to secure cords. Route and secure cords so that they will not be pinched or damaged when the cabinet is pushed to the wall.
- Not intended for recessed installation in ceilings, or soffits
- The National Electrical Code (NEC) does not permit cords to be concealed where damage to insulation may go unnoticed. To prevent fire danger, do not run cord behind walls, ceilings, soffits, or cabinets where it may be inaccessible for examination. Cords should be visually examined periodically and immediately replaced when any damage is noted.

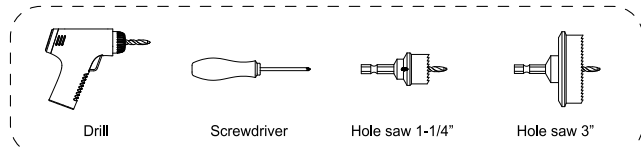
PACKAGE CONTENTS



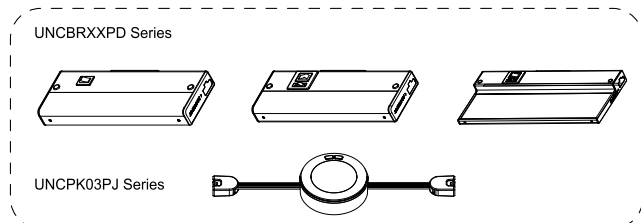
AVAILABLE ACCESSORIES (SOLD SEPARATELY)



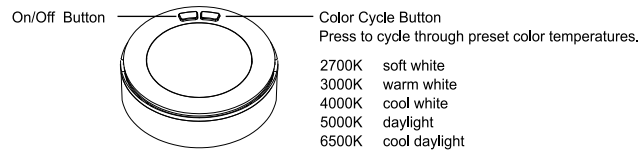
TOOLS REQUIRED



COMPATIBLE FIXTURES



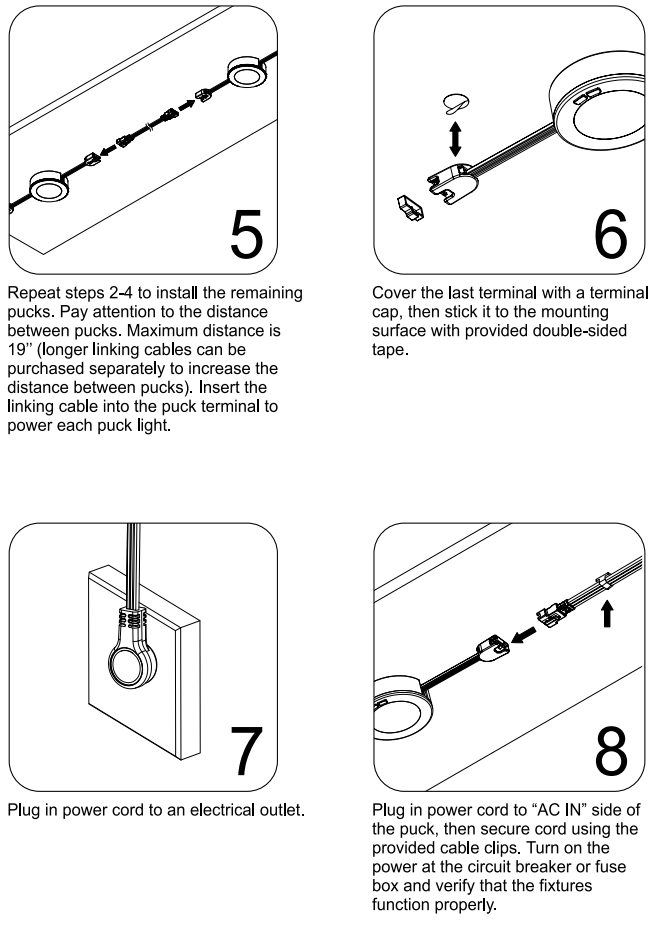
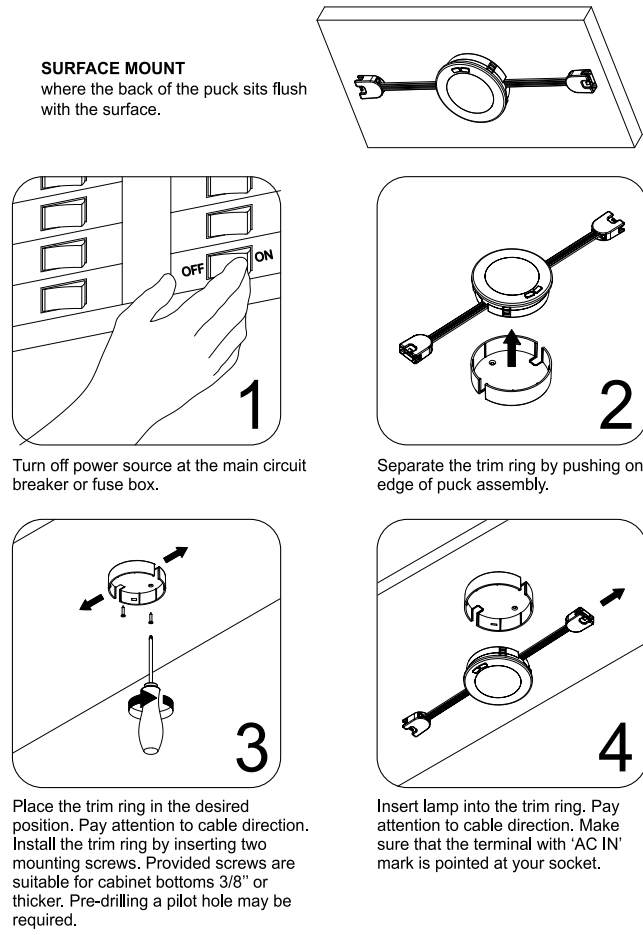
CHANGING COLOR TEMPERATURE



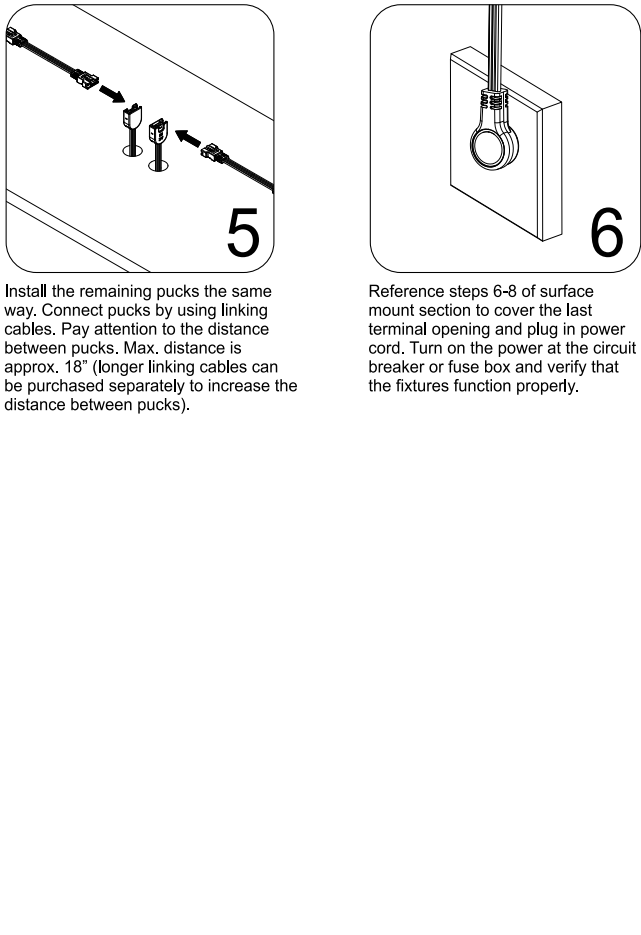
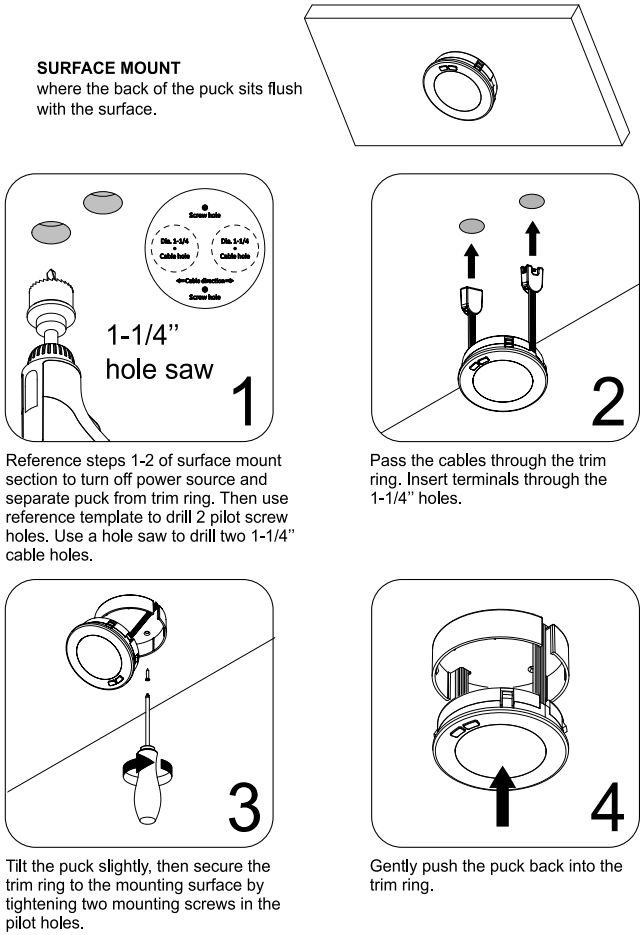
For direct wire installation, purchase the junction box accessory and follow installation instructions provided inside the box.

Link multiple puck and edge-it fixtures from one power source:
Up to 500W using linking cables
Up to 240W using recessed connectors
Up to 150W when using the gesture control or dimming accessories
Maximum power rating may be less if direct wired to an in-wall dimmer switch. Consult your dimmer switch specifications for maximum load limit

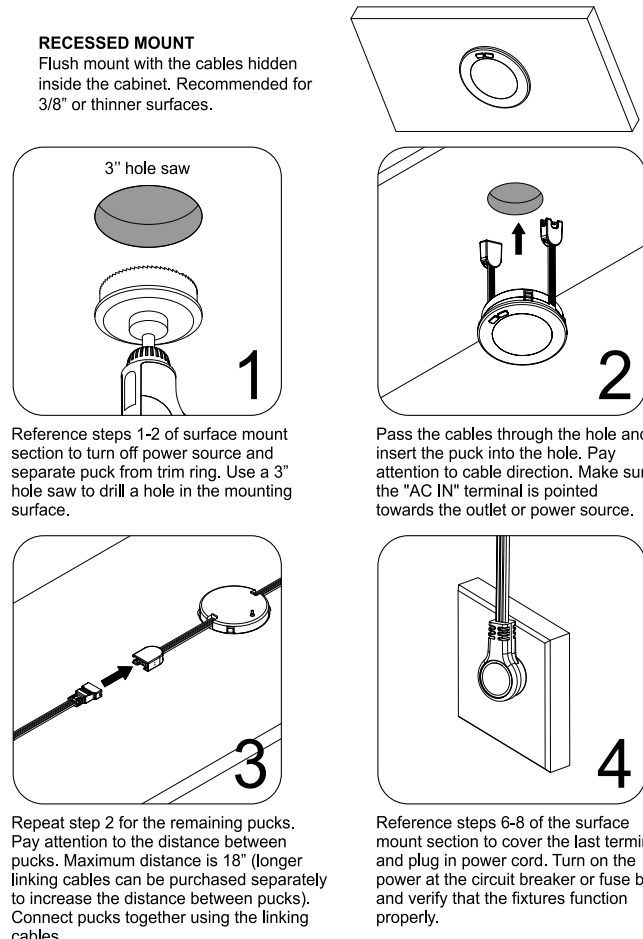
INSTALLATION Traditional surface mount



INSTALLATION Surface mount with concealed wiring



INSTALLATION Recessed mount



Note: This equipment has been tested and found to comply with the limits for a Class B digital device, pursuant to part 15 of the FCC Rules. These limits are designed to provide reasonable protection against harmful interference in a residential installation. This equipment generates, uses and can radiate radio frequency energy and, if not installed and used in accordance with the instructions, may cause harmful interference to radio communications. However, there is no guarantee that interference will not occur in a particular installation. If this equipment does cause harmful interference to radio or television reception, which can be determined by turning the equipment off and on, the user is encouraged to try to correct the interference by one or more of the following measures. Reorient or relocate the receiving antenna. Increase the separation between the equipment and receiver. Connect the equipment into an outlet on a circuit different from that to which the receiver is connected. Consult the dealer or an experienced radio/TV technician for help.