

PRODUCT SPECIFICATIONS

Project Name _____ Date _____



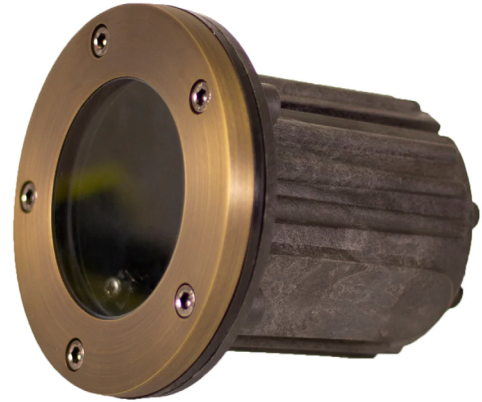
Type or Model _____ Qty _____

VOLT® Low Voltage Landscape Lighting

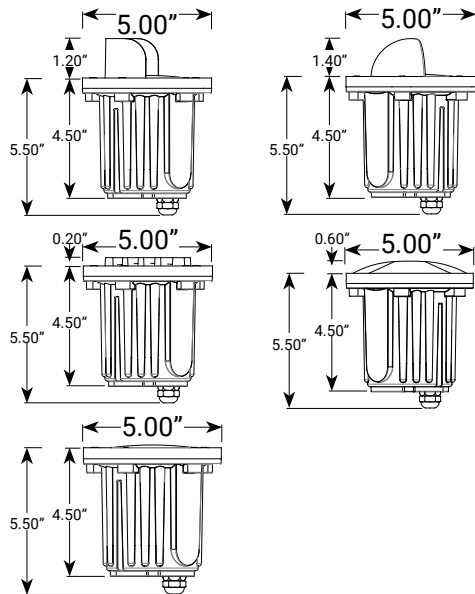
VOLT® BDL-550-4-BBZ-MR16-LL

PRODUCT DESCRIPTION

This well light is a sealed, outdoor lighting, in-ground, well light that uses an MR16 lamp. The socket is mounted on an adjustable gimbal so the lamp angle can be adjusted. The top is thick solid cast brass. The commercial outdoor lighting glass lens is flush with the top so water cannot puddle. There is a thick rubber gasket between the top and body of the well light canister for a water tight seal. The lower portion (canister) is completely sealed and the round lead wire uses a waterproof pressure fitting; which ensures that water cannot enter from the bottom of the fixture. Great for any application where you don't want an above ground or protruding fixture.



PRODUCT DIMENSIONS



SPECIFICATIONS

- **Construction:** Brass
- **Finish:** Bronze
- **Lead Wire:** 16 AWG
- **Lens:** Clear
- **Light Source:** MR16
- **Operating Voltage:** 12VAC
- **Powered by:** VOLT's Low Voltage Transformer
- **Watts:** 5W
- **Color Temperature:** 2700K

WARRANTY

Lifetime Warranty

FEATURES & BENEFITS

- Solid cast brass faceplate
- Corrosion resistant non-metallic canister
- Pre-aged finish; no powder coating, paint or finish to wear off or peel—just natural patina that does not corrode
- Beryllium copper socket - more corrosion resistant than copper
- Completely water tight; pressure rubber gasket and rubber seal around wire exit.

CERTIFICATIONS



File # E466348



File #E466348