



20 : 00

estimated  
assembly time



2 or more

people required

Ok, let's  
get started!



- Put on mood music!
- To prevent damage to product, use the clean side of package carton or rug as working surface.
- In the event of missing or damaged parts, delivery problems etc., please reach out to our team.  
We will be happy to fix the problem!

# care guide

- Clean regularly with a soft and dry cloth.
- To protect finish, avoid use of abrasive cleaners.
- Wipe up spills immediately. Please!

---

ⓘ While assembling the product, tighten the bolts up to 50%. Once all parts are in place, only then fully tighten the bolts.



# product parts



A  
Tabletop  
x1



B - Right  
Metal Leg  
x1



B - Left  
Metal Leg  
x1



C  
Rod  
x2

# what's included



(D) - Flat Washer  
(20mm x 8mm)  
x10



(E) - Lock Washer  
(15mm x 8mm)  
x10



(F) - Bolt  
(M6 x 20mm)  
x10



(G) - Bolt  
(M6 x 10mm)  
x8



(H) - Allen Key  
(Ø4x 110mm)  
x1

## assembly instructions

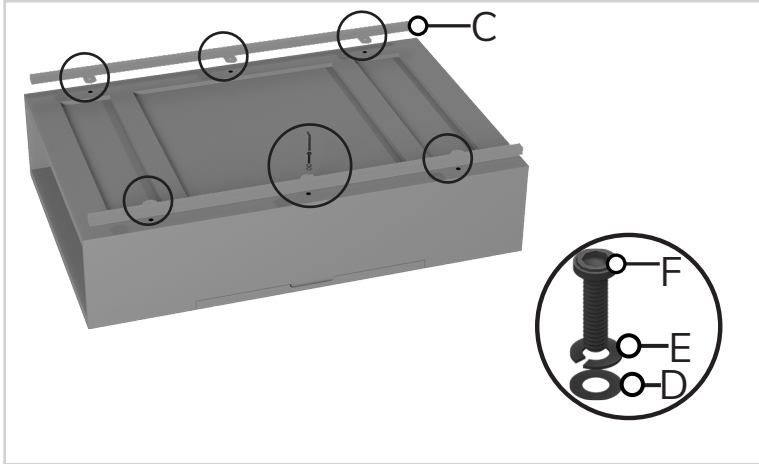
Friendly Tip: Take a deep breath going in. This may be a tricky part, but nothing too overwhelming. Just follow these steps to the T and the outcome will be worth it!



- ⓘ While assembling the product, tighten the bolts up to 50%. Once all parts are in place, only then fully tighten the bolts.

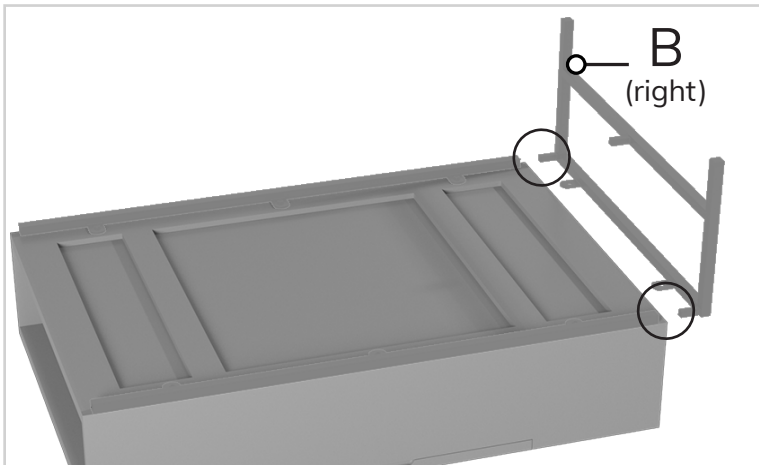
## step 1:

First, turn the tabletop (A) upside-down. Taking this image as reference, align rods (C) with predrilled slots on the tabletop. Fix rods (C) in place using bolts (F), lock washer (E), and flat washer (D). The order from bottom to top should be- D, E, and F. Tighten all points using the allen-key (H)



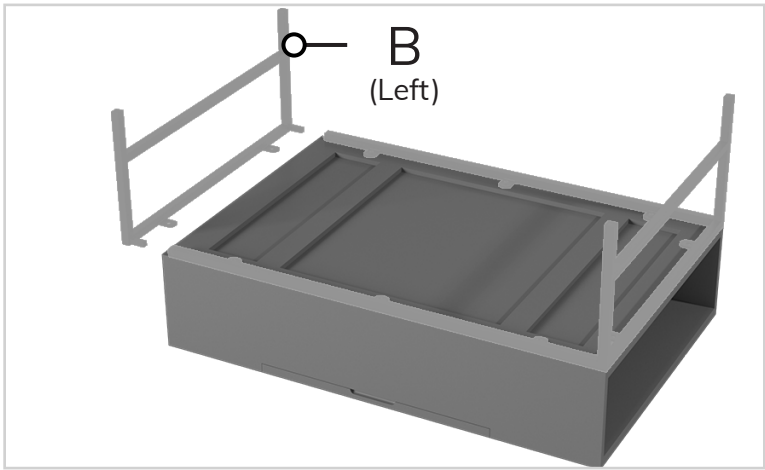
## step 2:

Next, take the right metal leg (B) and insert the highlighted area into the slots on rods (C).



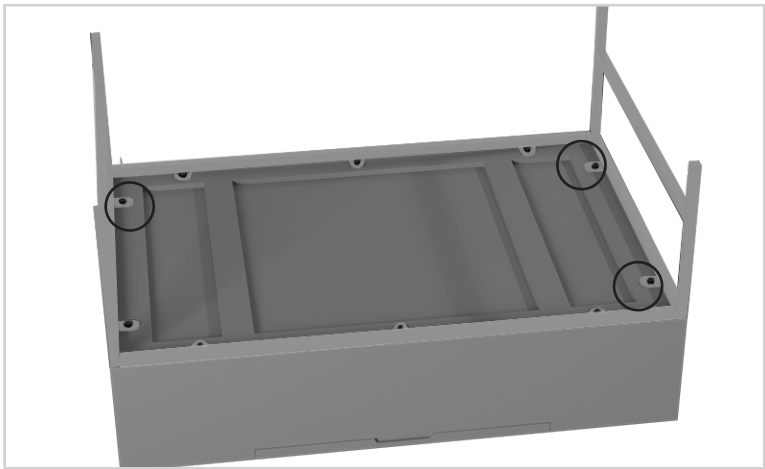
step 3:

Repeat step 2 with the left metal leg (B).



step 4:

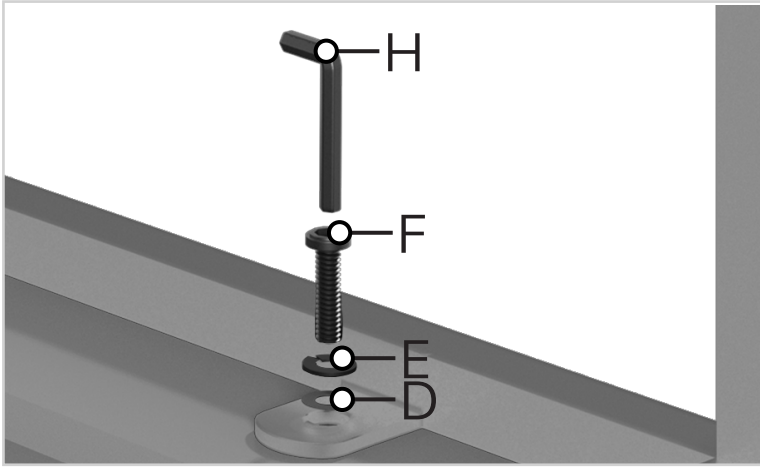
See the highlighted areas to know where to insert bolts (F) and washers (E and D) to attach the right and left metal legs (B) to the tabletop.





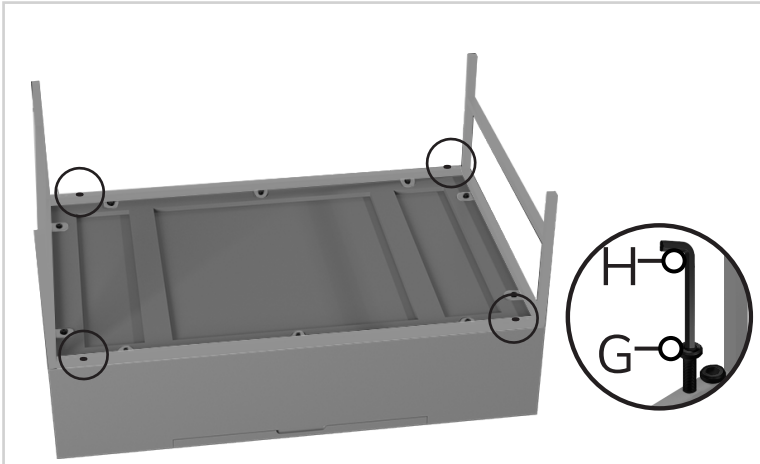
step 5:

Using bolts (F), lock washer (E), and flat washer (D), attach the legs. The order from bottom to top should be- D, E, and F. Tighten all points using the allen-key (H).



step 6:

Finally, to secure the whole metal base in place, insert bolts (G) in the highlighted areas. Tighten all four points with the help of the allen-key (H).



**Voila! Your coffee table is now assembled and secure!**

you've  
got  
a home  
with us

