

allen + roth.

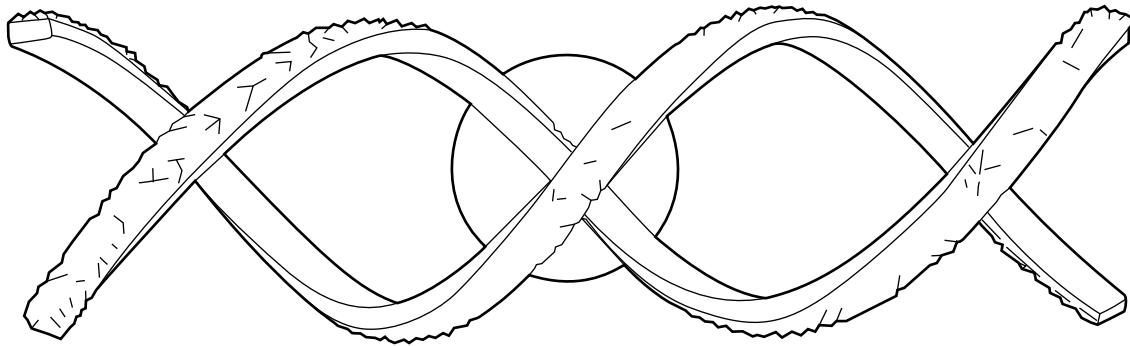
ALLEN + ROTH and logo design are trademarks or registered trademarks of LF, LLC. All rights reserved.

ITEM #5989609
MODEL #VBL40CH

VANITY BAR

Español p. 10

ATTACH YOUR RECEIPT HERE



Intertek
5005395

APPROVED FOR USE
IN DAMP LOCATIONS

Purchase Date _____



Thank you for purchasing this ALLEN + ROTH product.

Questions, problems, missing parts?

Before returning, contact us on:

866-439-9800, 8 a.m-8 p.m., EST, Monday-Sunday or **ascs@lowes.com**.

TABLE OF CONTENTS

Package Contents 2

Hardware Contents 3

Safety Information 3

Preparation 4

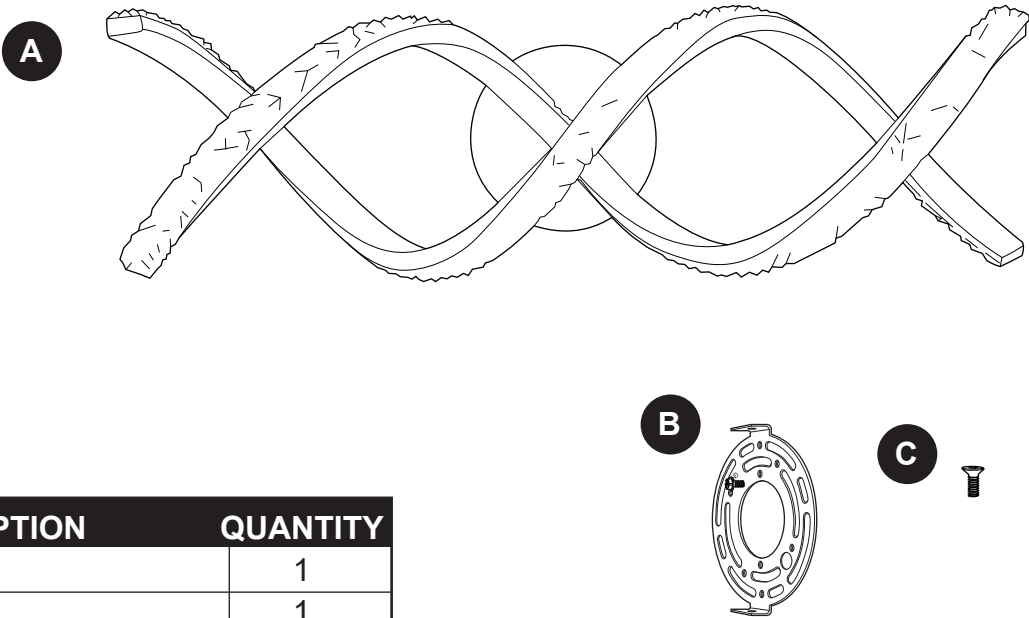
Assembly Instructions 5

Care and Maintenance 8

Troubleshooting 9

Warranty 9

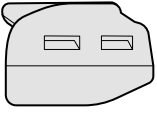
PACKAGE CONTENTS



PART	DESCRIPTION	QUANTITY
A	Fixture	1
B	Mounting Plate (preassembled to fixture (A))	1
C	Mounting plate screw (preassembled to fixture (A))	2

HARDWARE CONTENTS (shown actual size)

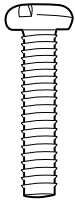
AA



Lever
Wire
Connector

Qty. 3

BB



Machine
Screw

Qty. 2

SAFETY INFORMATION

READ AND SAVE THESE INSTRUCTIONS

DANGER

- For your protection and safety, carefully read and understand the information provided in this manual completely before attempting to assemble, install or operate this product. Failure to do so could lead to fire, electrical shock or other injuries that could be hazardous or even fatal.
- **TURN OFF ELECTRICITY** at main fuse box (or circuit breaker box) before beginning installation by removing the fuse (or switching the circuit breaker off).
- **DO NOT** connect this fixture to an electrical system that does not provide a means for equipment grounding. Never use a fixture in a two-wire system that is not grounded. Installing a fixture into an electrical system not having a proper grounding means could cause metal parts of the fixture to carry electrical currents if any of the fixture wires, wire connections or splices were to become broken, cut or loose during the mounting or normal operation of the fixture. Under this condition, anyone coming in contact with the fixture would be subject to electrical shock, which could cause serious injury or death.
- **DO NOT** connect the **BARE** or **GREEN** insulation fixture ground wire to the **BLACK (HOT)** current-carrying wire or the **WHITE (NEUTRAL)** house wire. Connection of the **BARE** or **GREEN** fixture ground wire to the **BLACK** or **WHITE** house wires may cause metal parts of the fixture to carry electrical currents. Under this condition anyone coming in contact with the fixture will receive electrical shock, which could cause serious injury or death.
- **DO NOT** damage or cut the wire insulation (covering) during installation of fixture. **DO NOT** permit wires to contact any surface having a sharp edge. To do so may damage or cut the wire insulation, which could cause serious injury or death from electrical shock.

WARNING

- All electrical connections must be in agreement with local codes and ordinances, the National Electric Code (NEC) and ANSI/NFPA 70-1999. Contact your municipal building department to learn about your local codes, permits and/or inspections. Risk of fire - most dwellings built before 1985 have supply wire rated for 140 °F (60 °C). Consult a qualified electrician before installation.
- To avoid personal injury, the use of gloves is necessary while handling fixture parts with sharp edges.

SAFETY INFORMATION

WARNING

- To reduce the risk of damage to the fixture, DO NOT use power tools to assemble any part of the fixture.
- DO NOT suspend any fixture by the house wires. A fixture must always be mounted directly to an outlet box or to a mounting plate which is first attached to the outlet box. Wire connectors will not support the weight of a fixture. Suspending a fixture by the house wires and wire connectors will result in the fixture falling, with the possibility of personal injury and the danger of electrical shock or fire.
- To reduce the risk of fire, electrical shock or personal injury, wire connectors provided with this light fixture are designed to accept only one 12-gauge house wire and two lead wires from the light fixture. If your house wire is larger than 12-gauge or there is more than one house wire to connect to the corresponding fixture lead wires, consult an electrician for the proper size wire connectors to use.

CAUTION

- If you are not sure the lighting system has a grounding means, DO NOT attempt to install this fixture. Contact a qualified, licensed electrician for information regarding the proper grounding methods as required by the local electrical code in your area.
- All fixtures must be mounted to an outlet box that is supported by the building structure.
- If a dimmer control switch is used with this fixture, obtain professional advice to determine the correct type to use as well as the electrical rating required.
- Before installation is complete, carefully check all screws, bolts and nuts on fixture to ensure that they are secure.

PREPARATION

Before beginning assembly of product, make sure all parts are present. Compare parts with package contents list and hardware contents list. If any part is missing or damaged, do not attempt to assemble the product.

Estimated Assembly Time: 15 minutes

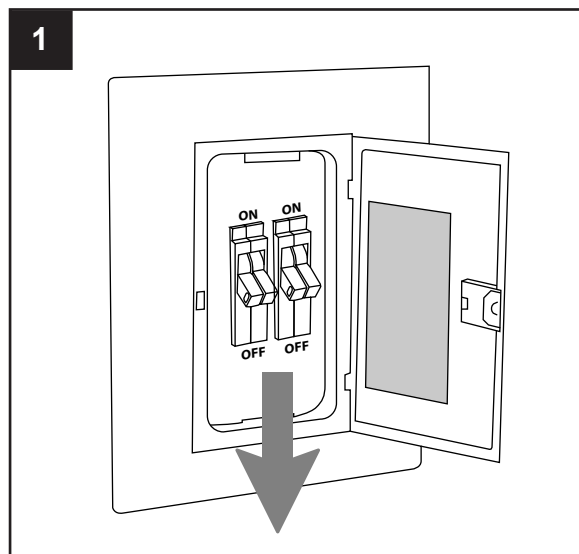
Tools Required for Assembly (not included): Flathead Screwdriver, Phillips Screwdriver, Flat-Nose Pliers, Safety Glasses, Stepladder and Electrical Tape

Helpful Tools (not included): A/C Tester Light, Do-It-Yourself Guide, Soft Cloth

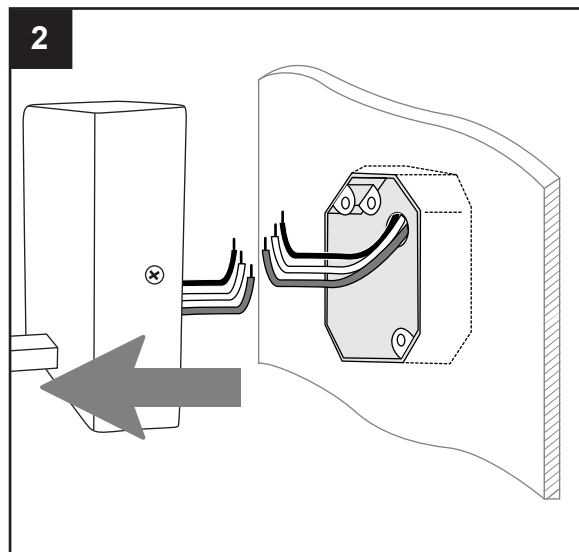
ASSEMBLY INSTRUCTIONS

1. Turn off circuit breakers and wall switch to the fixture supply line leads.

⚠ DANGER: Failure to disconnect power supply prior to installation may result in serious injury or death.

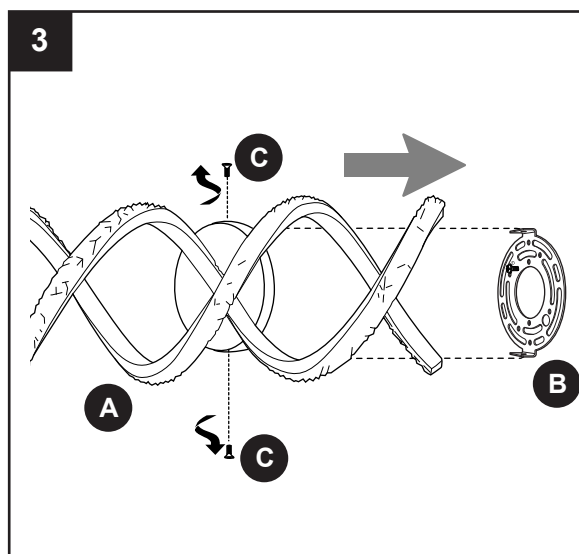


2. Remove existing fixture and disconnect all electrical wiring.



3. Remove mounting plate (B) from fixture (A) by removing mounting plate screws (C) from the edges of the fixture (A).

Save mounting plate screws (C) for later use.




ASSEMBLY INSTRUCTIONS

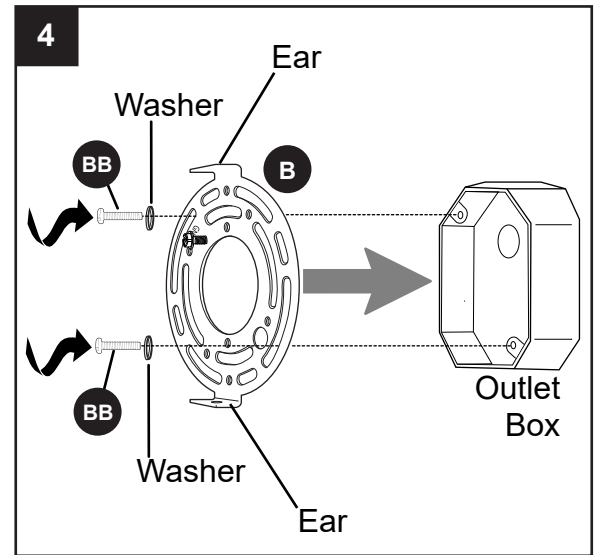
4. Attach mounting plate (B) to outlet box (not included) using existing washers and outlet box screws or the machine screws (BB). **NOTE:** If the outlet box screws required for your outlet box are of a different size than the machine screws (BB), consult a licensed electrician before proceeding.

Use a level (not included) to make sure ears on mounting plate (B) is level vertically. This will help ensure the fixture (A) is level when attached. Tighten machine screws (BB) completely to secure mounting plate (B).

! CAUTION: The fixture must be mounted to an outlet box that is supported by the building structure and can support the weight of the fixture. Plastic outlet boxes are not recommended.

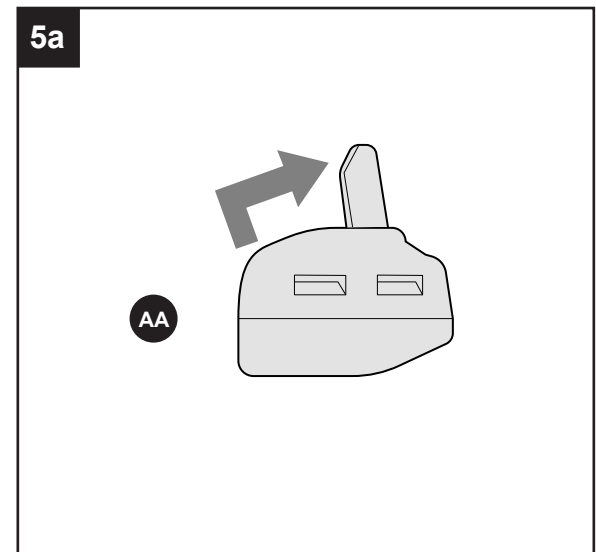
Hardware Used

BB Machine Screw  x 2



- 5a. **IMPORTANT:** Each wire connection is made by firmly raising the levers on each lever wire connector (AA), as shown. Then, ONE wire is inserted into each opening.

! WARNING: In order for wire connections to be secure, all levers on the lever wire connectors (AA) must be completely returned to their original position.



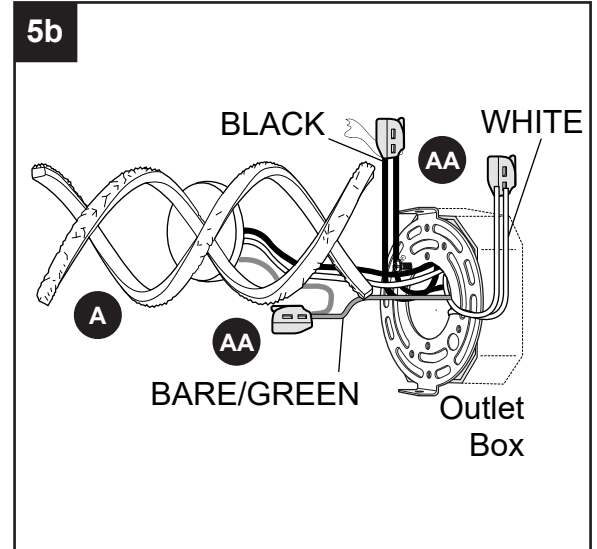
ASSEMBLY INSTRUCTIONS

- 5b. Unwrap BARE fixture wire from BLACK and WHITE fixture wires. Prepare wires by stripping 3/8 in. of insulation from wire ends using wire strippers (not included). Insert BARE/GREEN ground wire from outlet box and BARE ground wire from fixture (A) into openings in lever wire connector (AA). Insert WHITE wire from fixture (A) and WHITE wire from outlet box into openings in lever wire connector (AA). Insert BLACK wire from fixture (A) and BLACK wire from outlet box into openings in lever wire connector (AA).

⚠ WARNING: Never connect ground wire to WHITE or BLACK power supply wires.

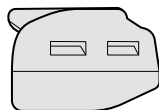
⚠ WARNING: GENTLY pull on wires in each lever wire connector (AA) to confirm the lock is engaged and that wires are secure.

⚠ WARNING: To reduce the risk of fire, electrical shock or personal injury, lever wire connectors (AA) are designed to accept only one 12-gauge house wire and one lead wire from the light fixture. If your house wire is larger than 12-gauge or there is more than one house wire to connect to the corresponding fixture lead wires, consult an electrician for the proper size lever wire connectors to use.



Hardware Used

AA Lever Wire Connector

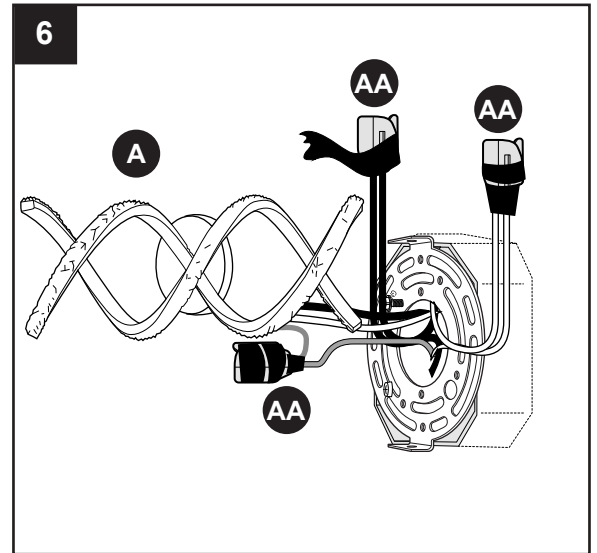


x 3

ASSEMBLY INSTRUCTIONS

6. Wrap electrical tape (not included) around each individual lever wire connector (AA) down to the wire. Push lever wire connectors (AA) gently back into outlet box. Carefully push excess wiring into outlet box.

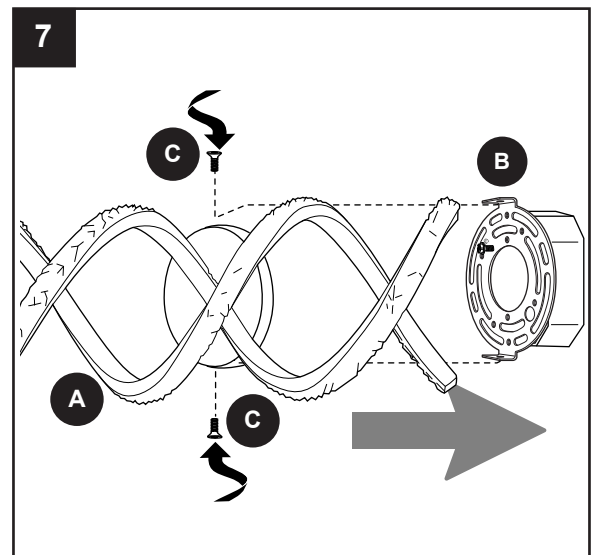
⚠ WARNING: Make sure no bare wire or wire strands are visible after making connections.



7. Attach fixture (A) to mounting plate (B) using the screws (C) previously removed (Step 3, Page 5).

Restore power and test fixture (A).

If lights do not function, please refer to TROUBLESHOOTING on the following page.



CARE AND MAINTENANCE

- Shut off main power supply or unplug. Wipe with soft cloth or use window cleaner. Do not use an abrasive cleaner.

TROUBLESHOOTING

⚠ WARNING: Before beginning work, shut off the power supply to avoid electrical shock.

PROBLEM	POSSIBLE CAUSE	CORRECTIVE ACTION
Light does not come on initially or no longer comes on.	1. Power is OFF. 2. Faulty connection. 3. LED component is not working properly.	1. Make sure power supply is ON. 2. Check wiring and all connections. 3. Contact Customer Service.
Fuse blows out or circuit breaker trips.	1. Crossed wires. 2. Power wire is grounding out.	1. Check wiring. 2. Check all connections.

WARRANTY

The distributor warrants all of its lighting fixtures against defects in materials and workmanship for five (5) years from the date of purchase. If within this period the product is found to be defective, take a copy of the bill of sale as a proof of purchase and the product in its original carton to the place of purchase. The distributor will, at its option, repair, replace or refund the purchase price to the consumer. All costs of installation and removal of the fixture is the responsibility of the consumer. This warranty does not cover fixtures becoming defective due to misuse, accidental damage or improper handling and/or installation and specifically excludes liability for direct, incidental or consequential damages. As some states do not allow exclusions of limitations on an implied warranty, the above exclusion and limitation may not apply. This warranty gives you specific rights and you may also have other rights which may vary from state to state.