

## Installation Instructions, Post Base

6x6 shown  
with optional  
2-3/8" Star  
(56623-sold  
separately)



56604 4x6 (4x6-PB-LS)  
51704 4x6 (4x6-PB-IW)  
56605 10x10 (10x10-PB-LS)  
56607 4x4 (4x4-PB-LS)  
51707 4x4 (4x4-PB-IW)  
56608 6x6 (4x6-PB-LS)  
51708 6x6 (4x6-PB-IW)  
56609 8x8 (8x8-PB-LS)  
51709 8x8 (8x8-PB-IW)

this instruction illustrates 6x6 Post Base installation.  
All Post Bases will be installed the same.

Laredo Sunset shown

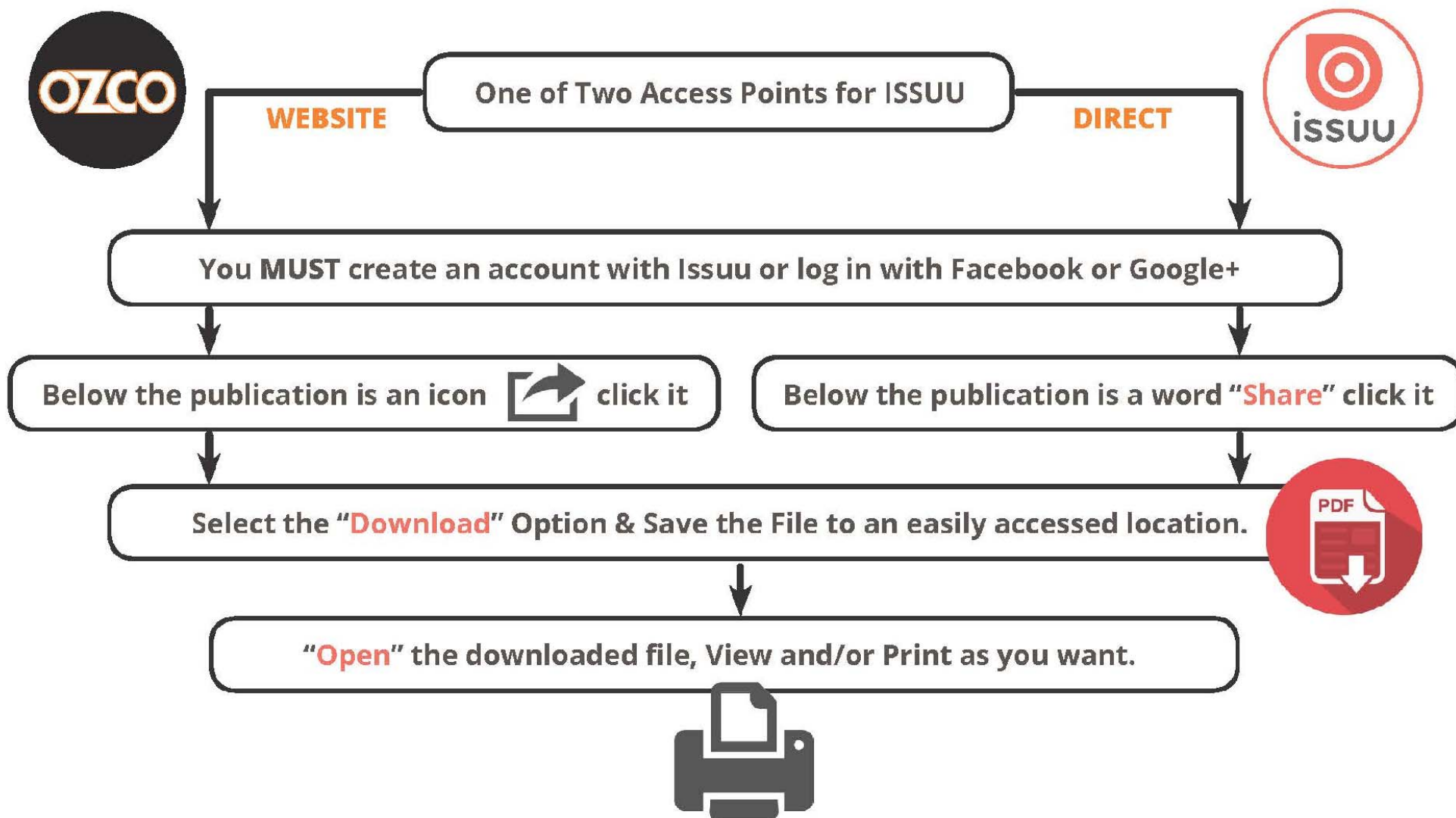


**OZCO** BUILDING PRODUCTS



# Printing Documents from ISSUU

Unfortunately, there is currently no way to print content directly through issuu. To print a publication, you will need to download it and print it from your computer.

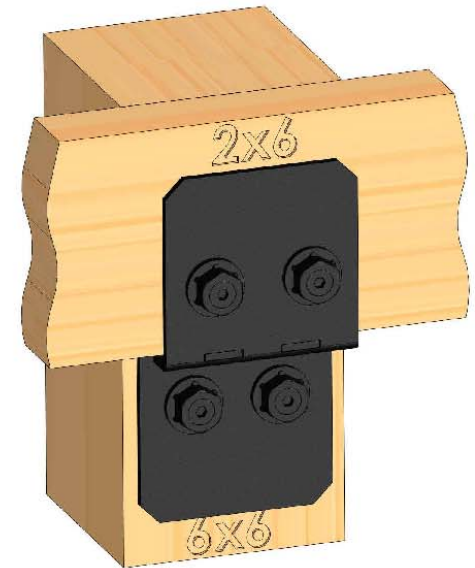


# Laredo Sunset & Ironwood



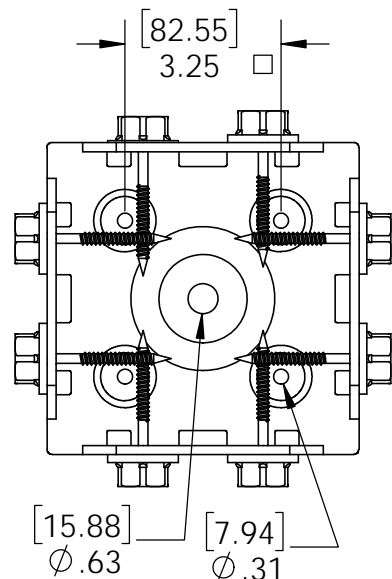
Laredo Sunset  
(566XX series)

2 great styles  
Same functionality  
choose your  
connection lifestyle  
both styles available for  
most products

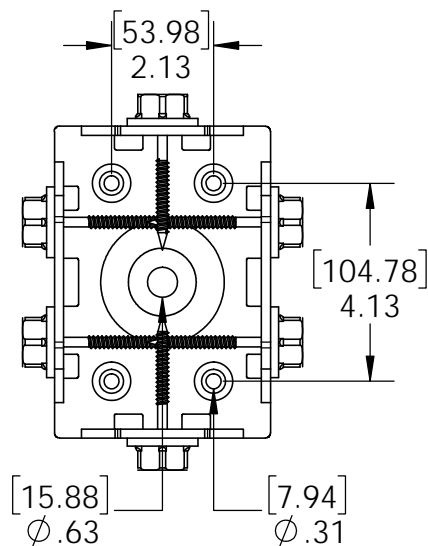


Ironwood  
(517XX series)

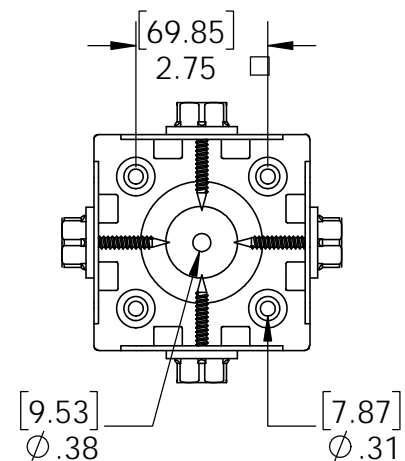




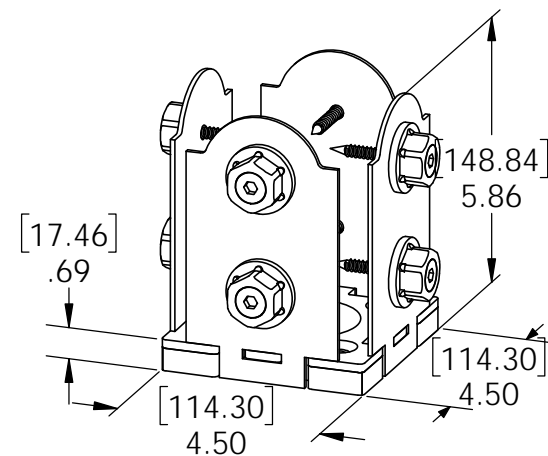
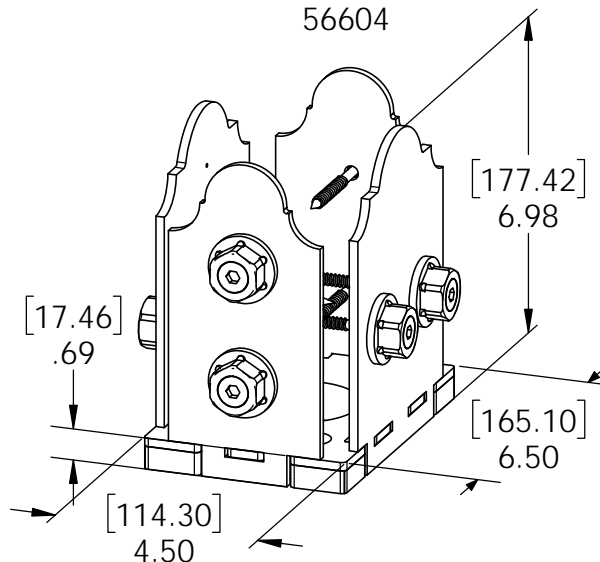
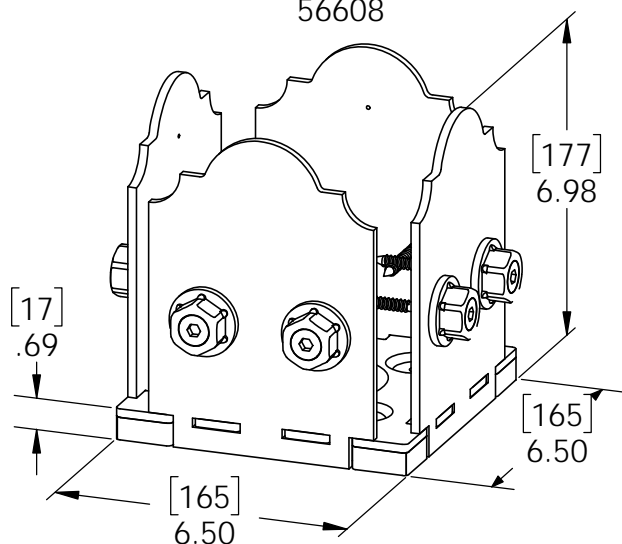
6x6 Post Base Kit (6X6-PB-LS)  
56608



4x6 Post Base  
56604

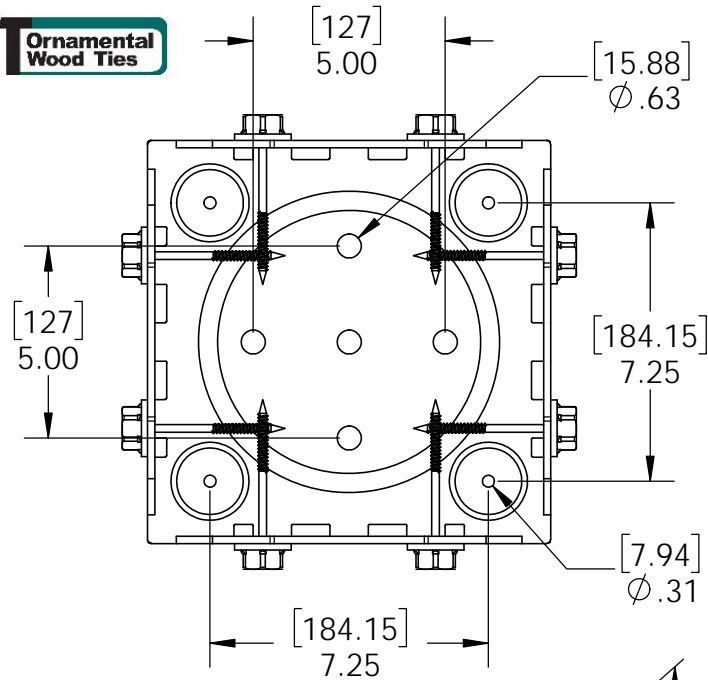


4x4 Post Base (4x4-PB-LS)  
56607

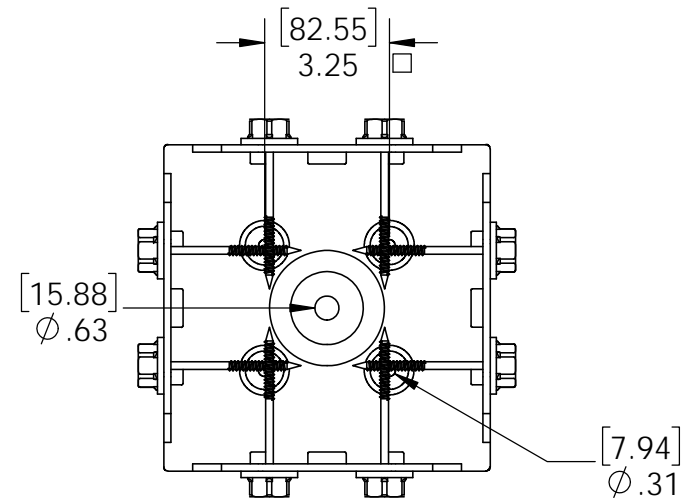
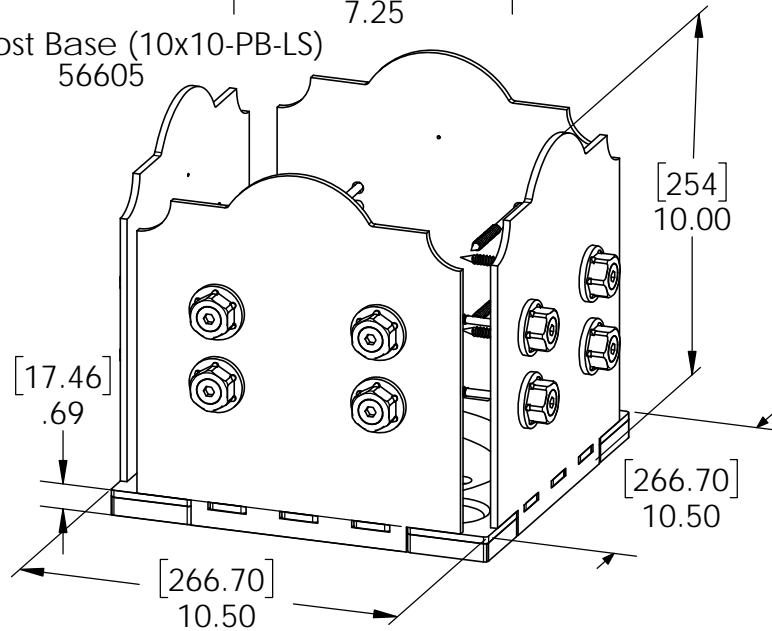


## Overview-Laredo Sunset

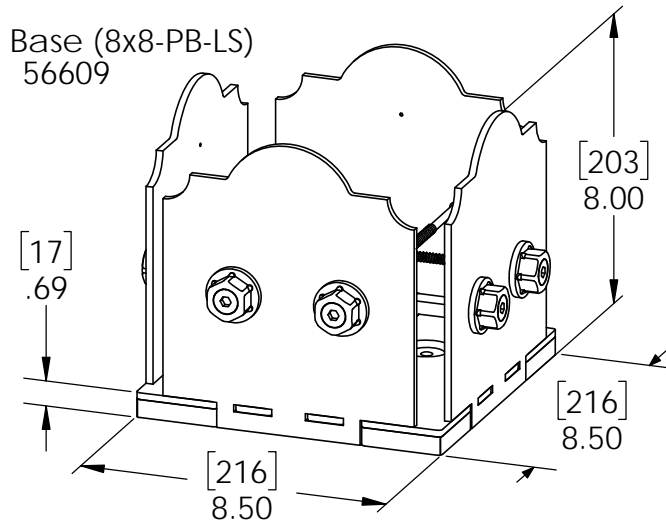
### Installation Instructions, Post Base



10x10 Post Base (10x10-PB-LS)  
56605

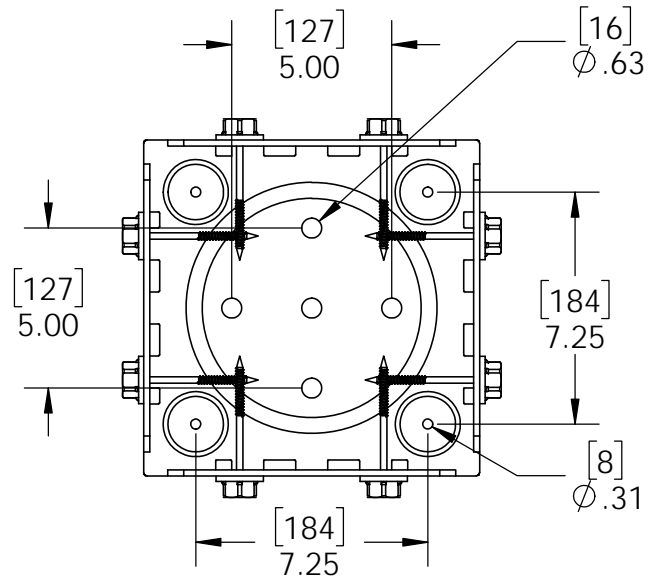


8x8 Post Base (8x8-PB-LS)  
56609

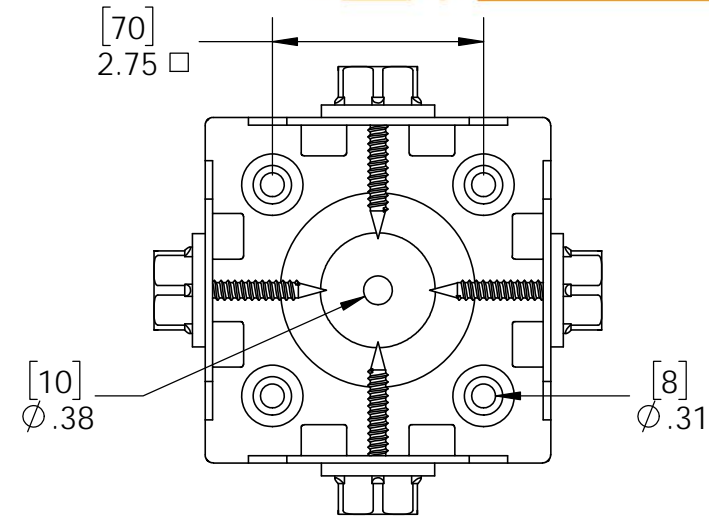
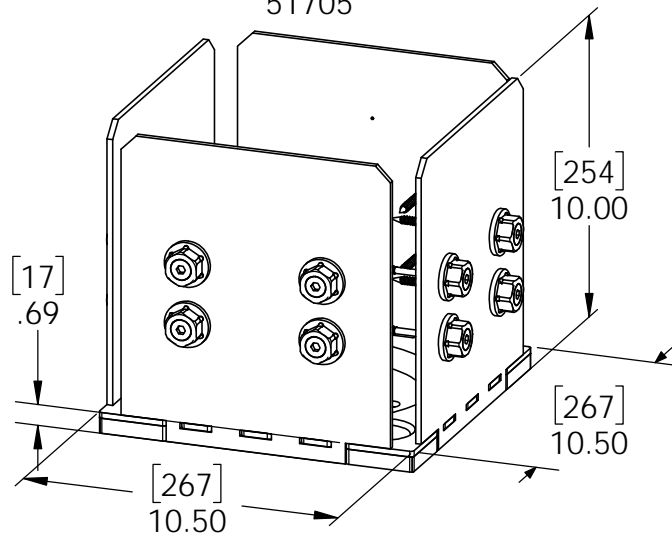


## Overview-Laredo Sunset

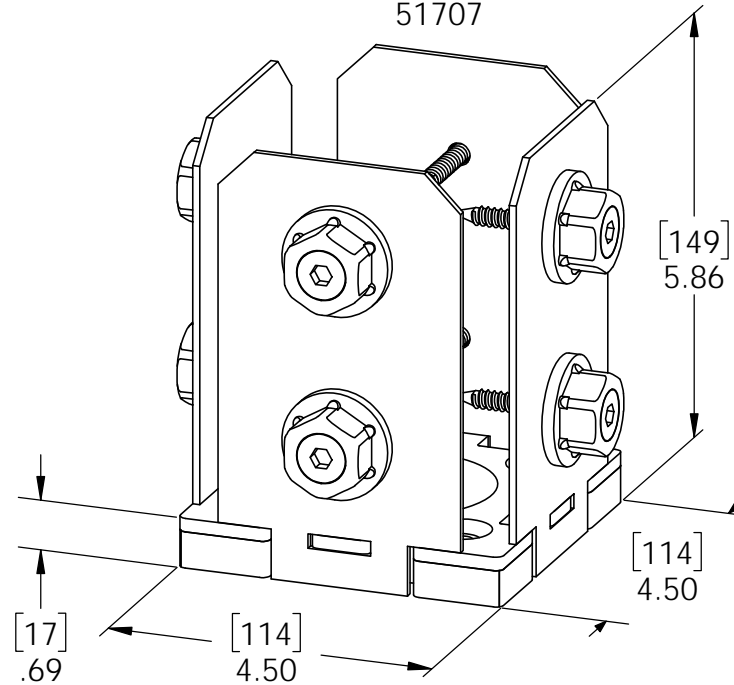




10x10 Post Base (10x10-PB-IW)  
51705

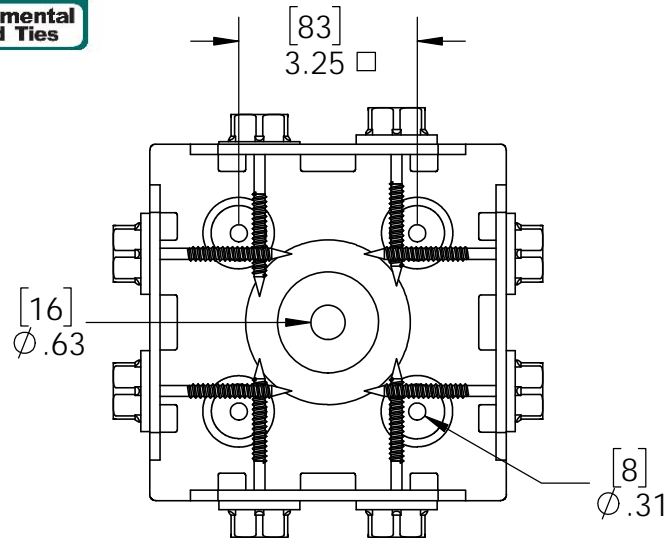


4x4 Post Base (4x4-PB-IW)  
51707

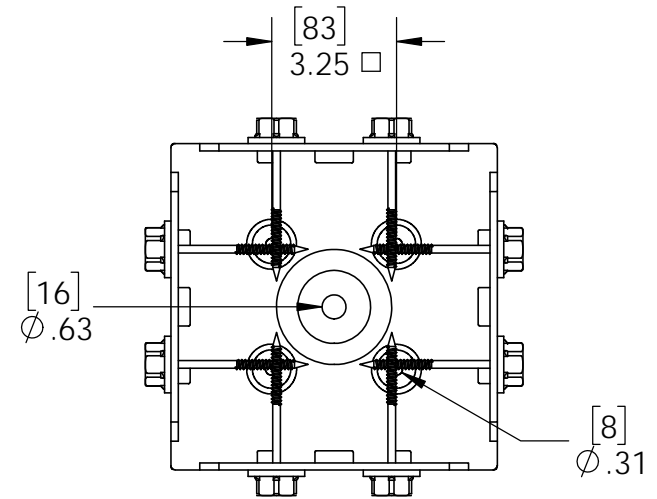
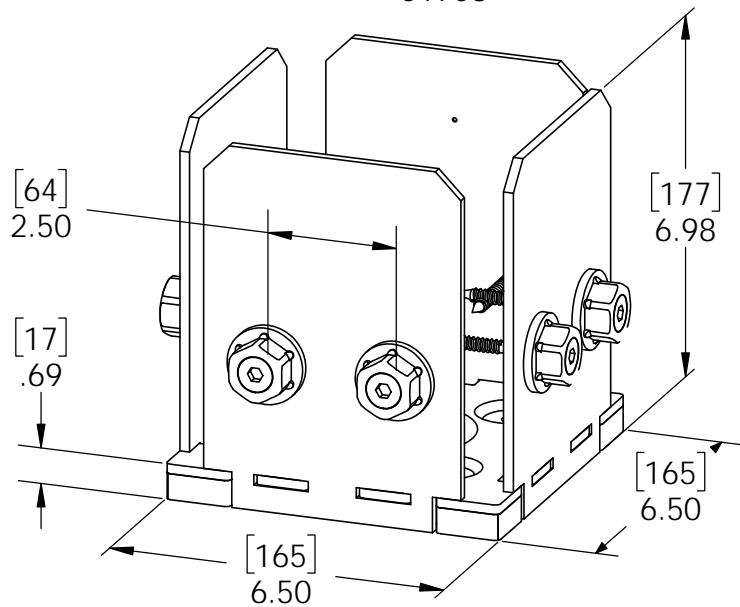


## Overview-Ironwood

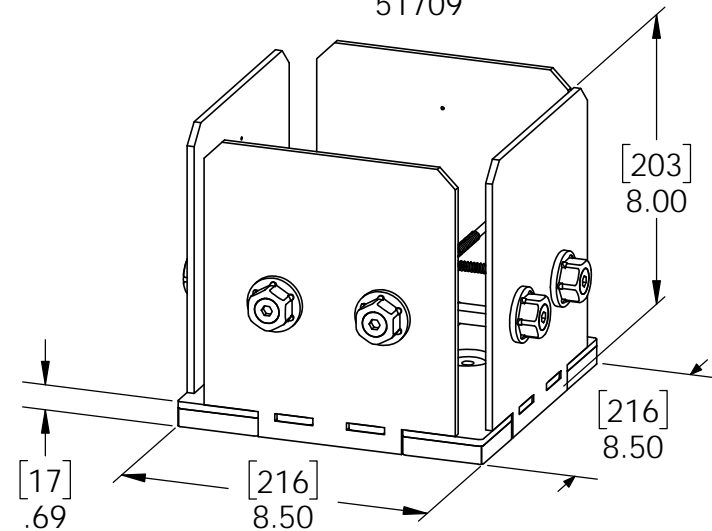
### Installation Instructions, Post Base



6x6 Post Base (6x6-PB-IW)  
51708



8x8 Post Base (8x8-PB-IW)  
51709



## Overview-Ironwood

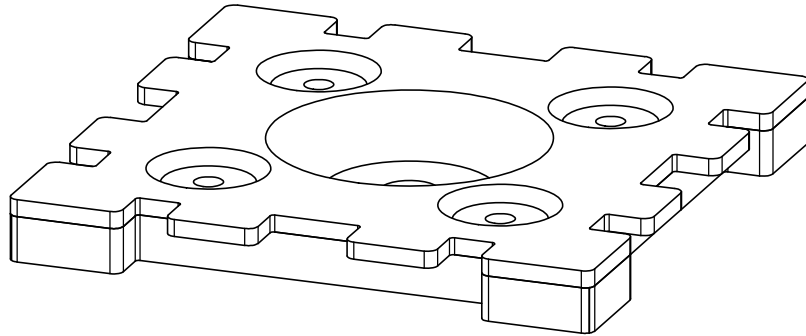
### Installation Instructions, Post Base



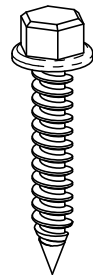
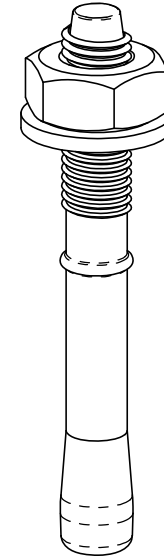
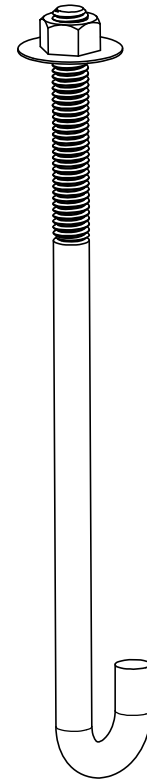
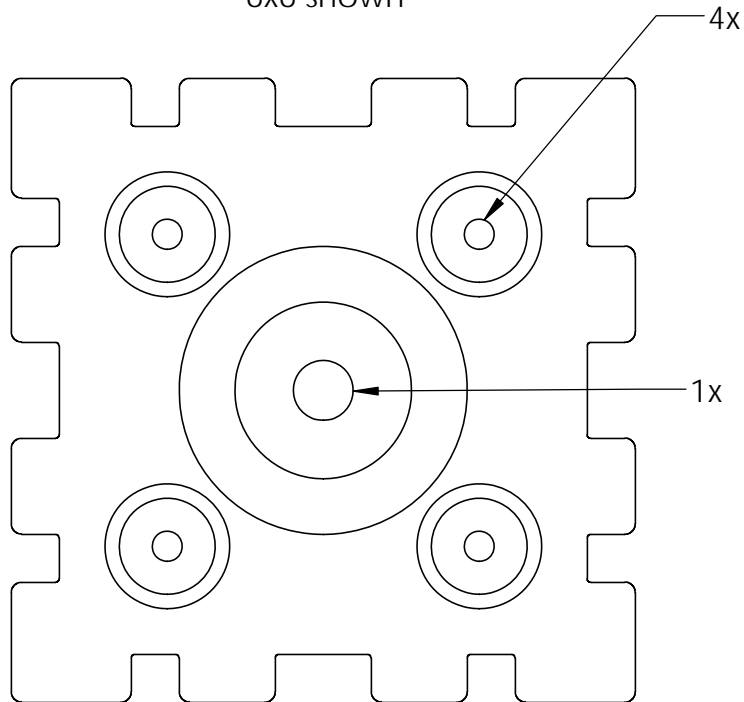
V2.00 - Installation Instructions, Specifications and Project Plans are effective 9/6/2016 . This information is updated periodically and should not be relied upon after 2 years from 9/6/2016 . Please visit [OZCOBP.com](http://OZCOBP.com) to get current information.



mount base to surface



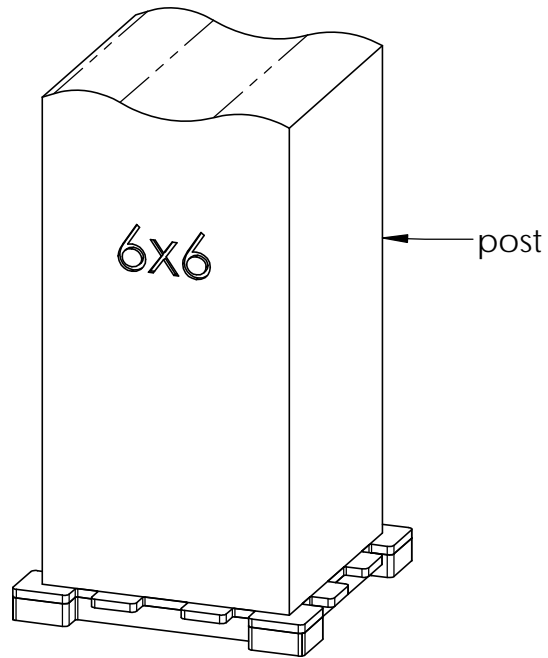
6x6 shown



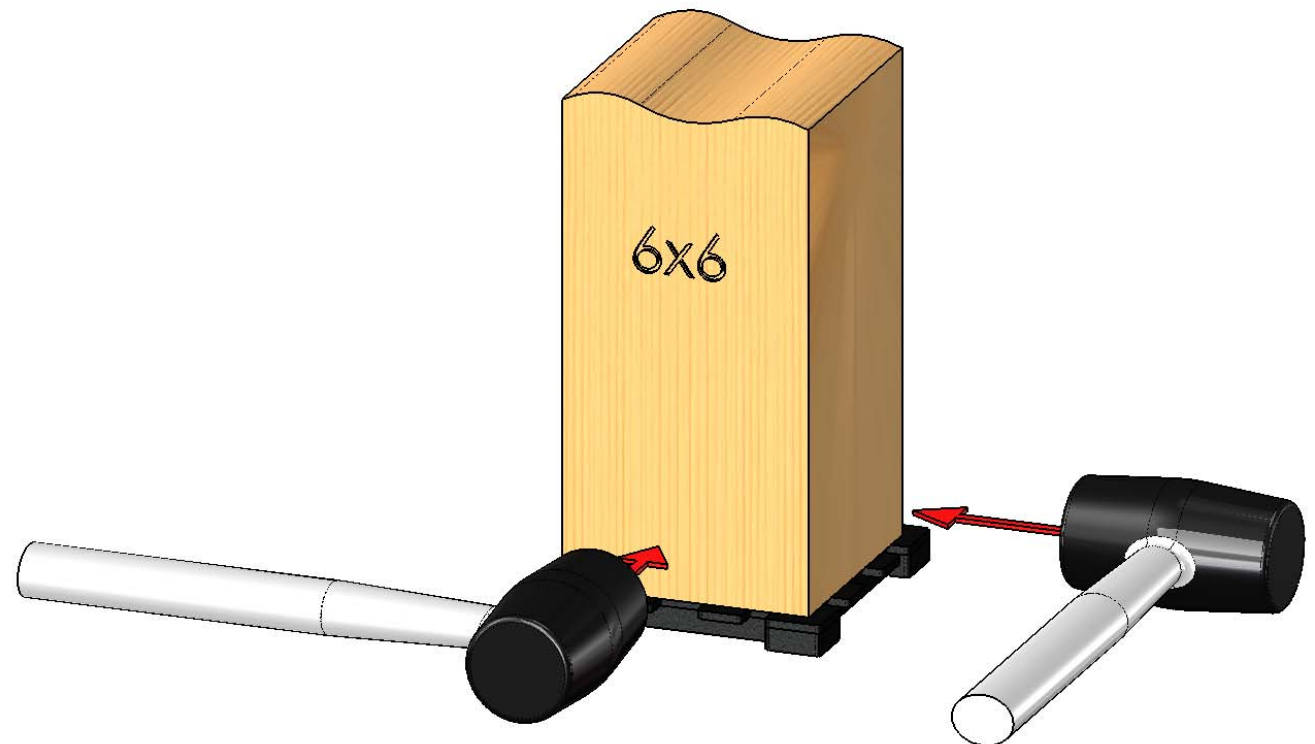
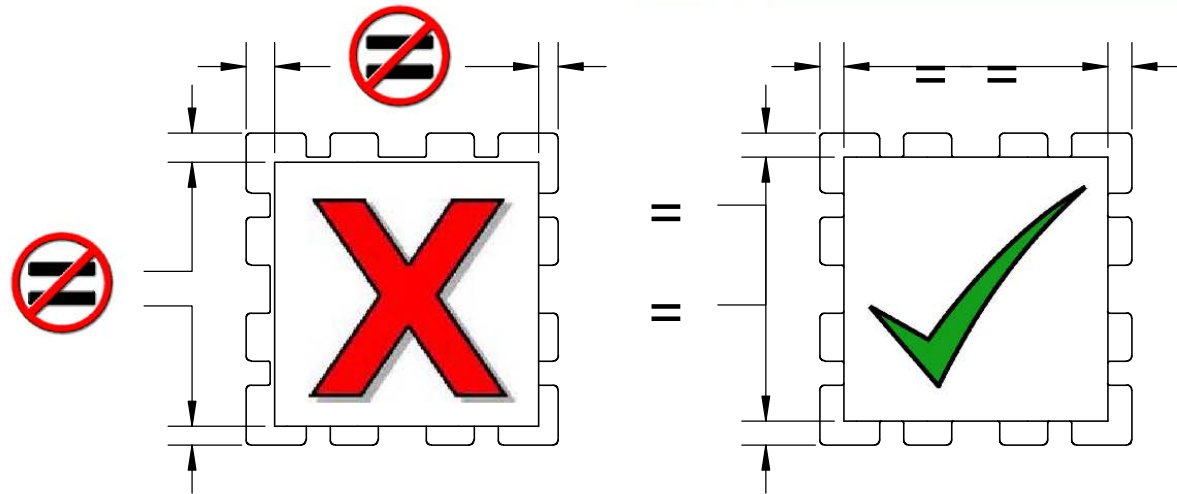
choose fastener that suits your application

## step 1

### Installation Instructions, Post Base

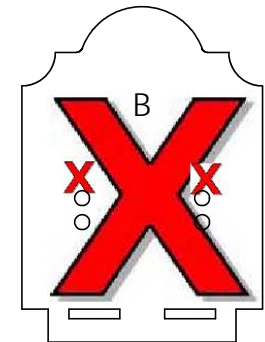
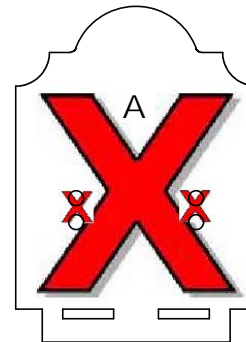
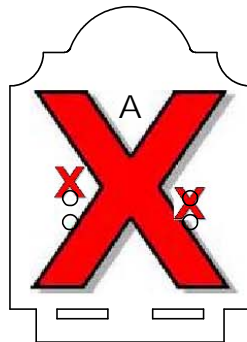
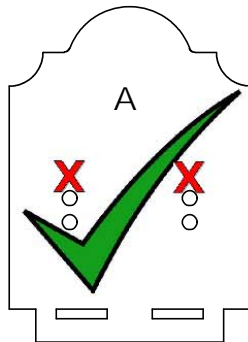
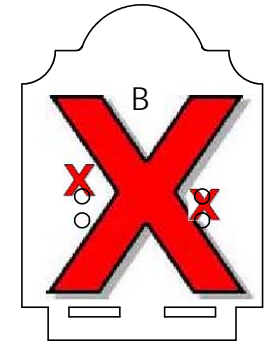
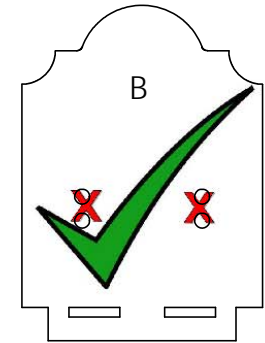
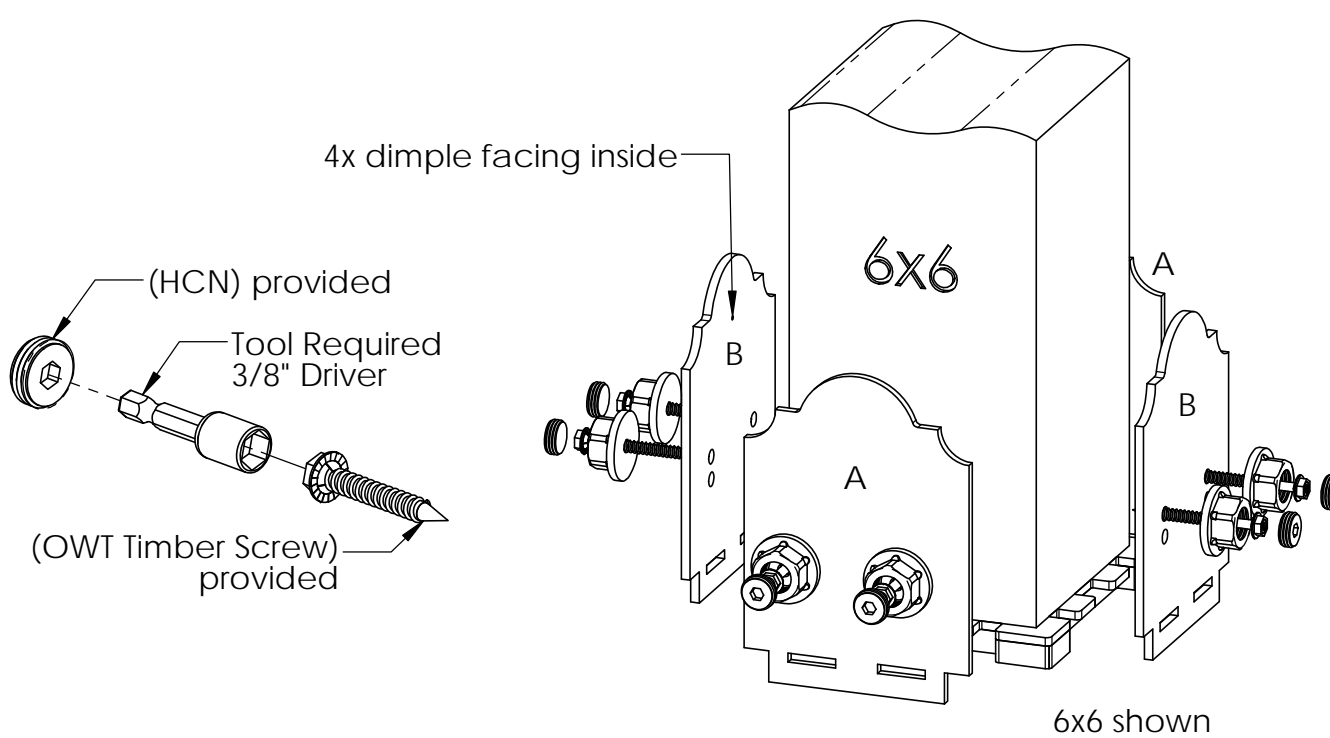


6x6 shown



## step 2

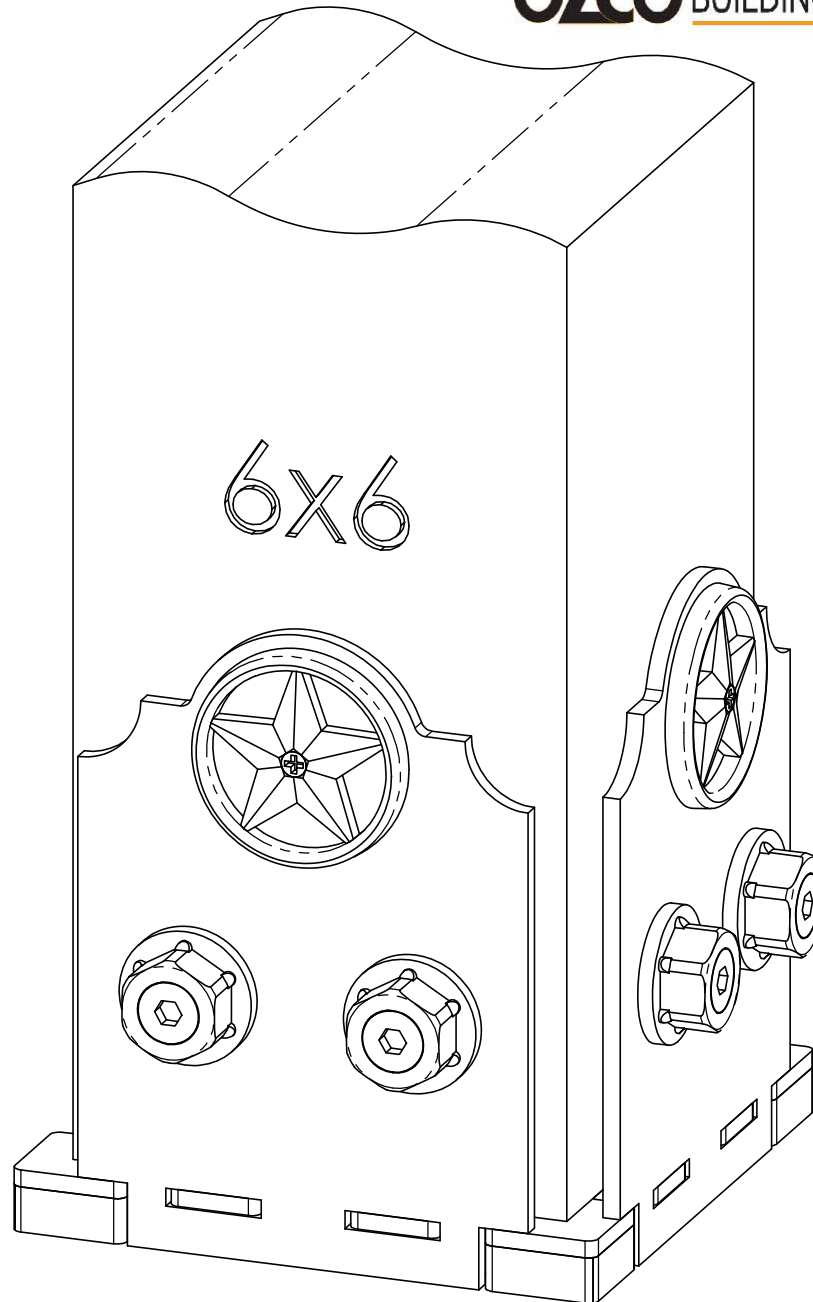
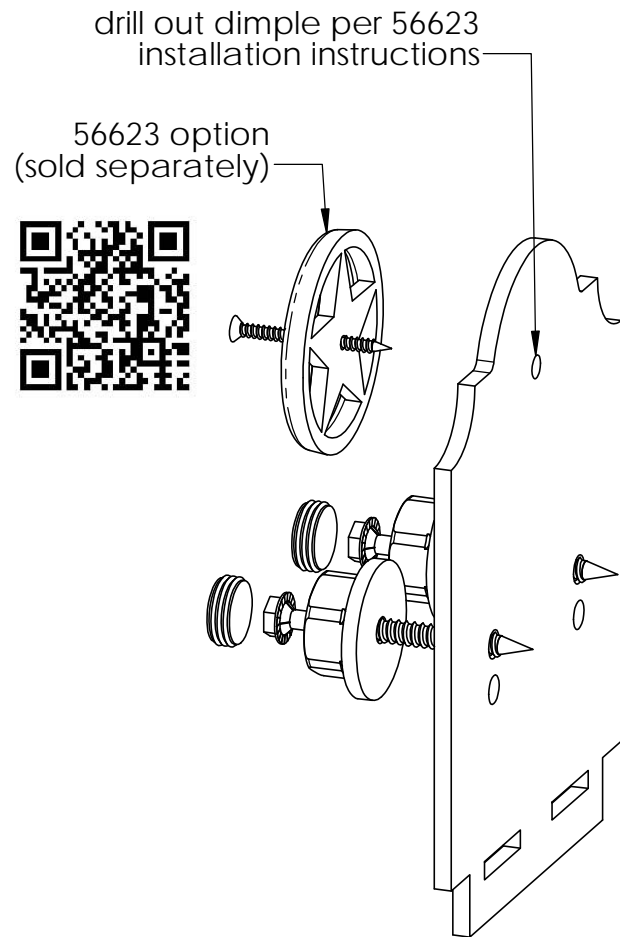
Installation Instructions, Post Base



## step 3

Installation Instructions, Post Base

V2.00 - Installation Instructions, Specifications and Project Plans are effective 9/6/2016 . This information is updated periodically and should not be relied upon after 2 years from 9/6/2016 . Please visit [OZCOBP.com](http://OZCOBP.com) to get current information.

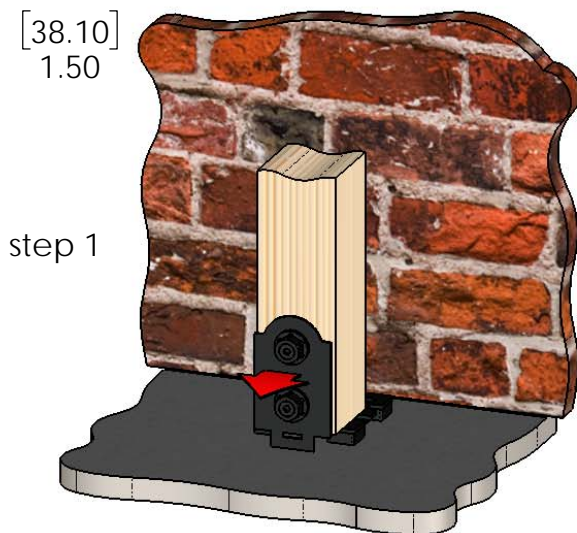
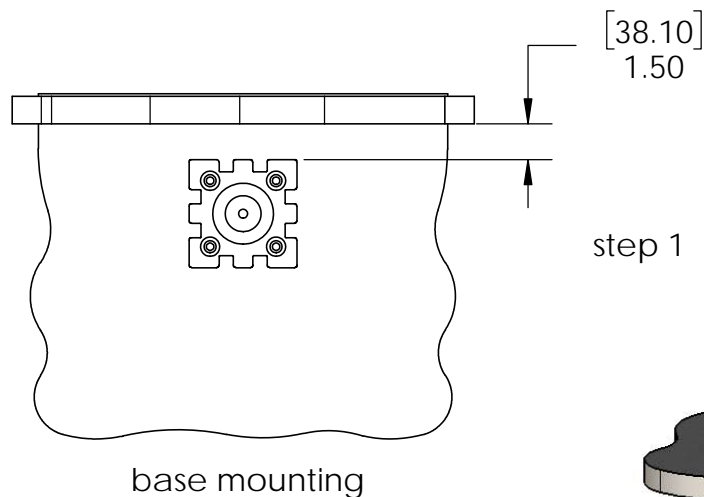


## optional accessory

Installation Instructions, Post Base

6x6 shown

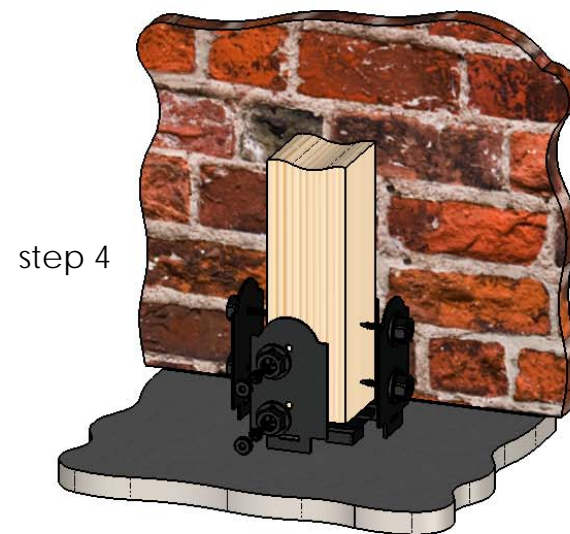
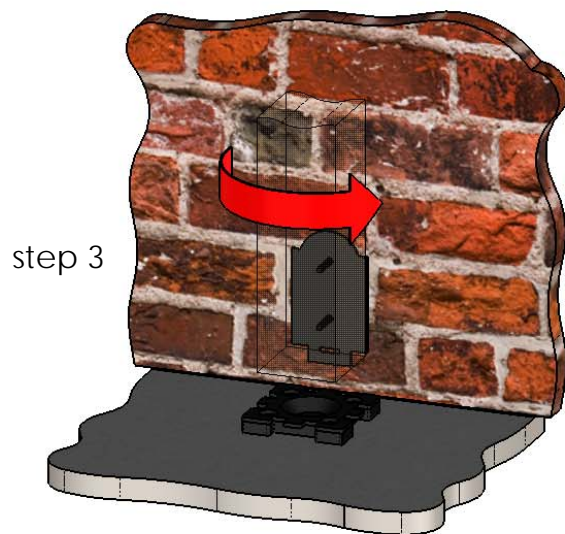
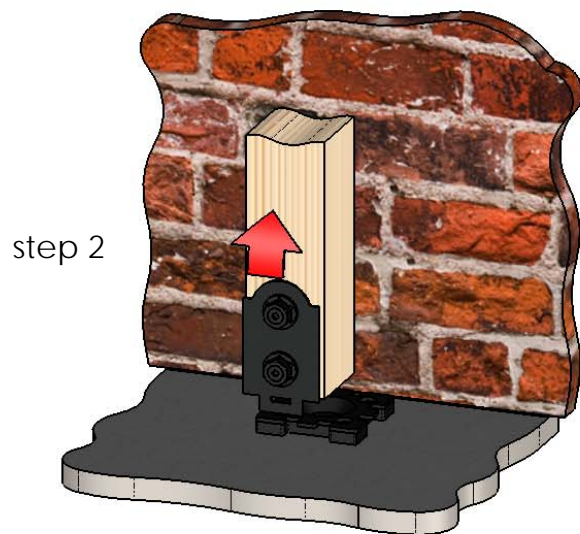
V2.00 - Installation Instructions, Specifications and Project Plans are effective 9/6/2016 . This information is updated periodically and should not be relied upon after 2 years from 9/6/2016 . Please visit [OZCOBP.com](http://OZCOBP.com) to get current information.



additional instructions

- center post as shown in previous steps
- install 1 compression plate with fasteners
- remove, reposition & reinstall post/compression plate as shown with **plate facing wall**
- complete assembly as shown

this procedure applies to all OZCO Post Bases & Post Anchors utilizing compression plates (56607 shown)



## Special Instructions-mounting next to wall

4x4 shown